

2010 Calendar

November / December 2009



IOWA OUTDOORS

THE DNR'S MAGAZINE OF CONSERVATION AND RECREATION



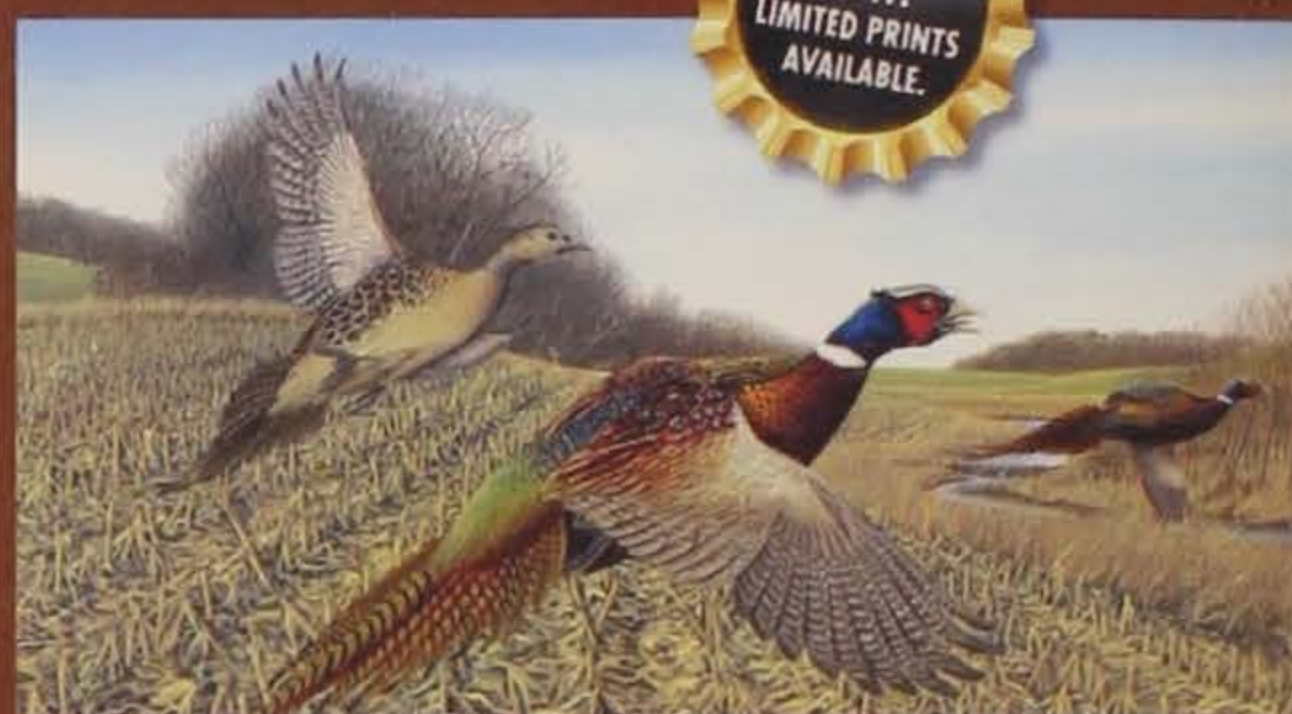
Kick-off your holiday season in Marshalltown!



Stroll downtown Marshalltown on Friday evening, November 20th and enjoy holiday entertainment and goodies while you watch the dancing holiday lights on the courthouse. Spend the night at one of our hotels and receive coupons for meals and shopping throughout the weekend. For complete package details and reservations visit our website.



1.800.697.3155
www.visitmarshalltown.com



WILDLIFE FINE ART SO FINE...

FIRST PLACE - 2010 IOWA DUCK STAMP
FIRST PLACE - 2009 IOWA HABITAT STAMP
FIRST PLACE - 2009 IOWA TROUT STAMP

WWW.TOMASMILLERSTUDIOS.COM
515.205.8775

*Make Tracks
Make a Memory
Hamilton County, IA*

Pheasant Hunting

Abundant game opportunities

Deer Hunting

Many open hunting areas

Bird Watching

One of the best areas in the U.S.

Ice Fishing

Make a great catch

www.visitwebstercityiowa.com
800-535-8341

Webster City

Boone River Country

IOWA
OUTDOORS

Would you be interested in reaching more than **40,000** Iowa households and businesses with your advertising?



ADVERTISE IN
IOWA OUTDOORS TODAY!

Contact **Dave Larson** at
Larson Enterprises

515-440-2810
LARSON6@MCHSI.COM

NEED MORE
CALENDARS?



**A STEAL AT
THE RIDICULOUSLY
UNDERVALUED PRICE OF
\$3.50 EACH.**
(AND WE'LL THROW IN
FREE SHIPPING, TOO!)

ORDER AT
515-281-5918

The Secret to Finding Your Natural Gait is NE Iowa

CABIN FEVER

If camping in the Yellow River State Forest is too chilly this time of year, then the nearby Natural Gait resort is your place for a cozy weekend that is all about you.

Owners Howard and Donna Bright bought a chunk of land along the Yellow River more than 20 years ago. "For the Woodland people, this was holy land," Bright says simply, spreading his hands to indicate the forested ridgeline where most of his cabins sit, and the clear trout stream below, where a fishing line looks big as baling wire.

Standing on nearly 400 acres, the resort is horse-friendly, like most of this area, and includes the Brights' wildflower seed company, Ion Exchange. The cabins aren't the light version found in most resorts, either. Their thick timbers, wood-burning stoves and reclaimed lumber and barn pieces are as comfortable as they are beautiful, jutting from a lovely landscape in a way that begs for steaming coffee on the porch, or a rowdy round of cards at night.

If you stay at the Ion Inn, the original lodging next to the Brights' house, you can wake up, cross the gravel road and start fishing first thing in the morning.

"A lot of the time, when man comes in, he destroys the very thing he came to see," Howard Bright says. "That didn't happen around here."

A typical fall morning at the Natural Gait unfolds atop a high ridge, in a cabin overlooking farmland and streambeds. The sky will turn pink, and then purple, and so on, until a full electric blue illuminates the bright beauty of fall.

This is the kind of day that'll convince you how important it is to get grounded in the land before you have to entertain all those relatives at Thanksgiving, and then, seemingly minutes later, at Christmas.

So whether it is before the holidays or if you need a rest afterwards, get out there, if only to hunker down in a cabin, its chinks lined by thick rope so the drafts can't diminish the efforts of a thick, popping fire in the stove.

Have a good time with your friends or a quiet, relaxing, more intimate time with that special person in your life. Dip into the treasure chest of nature that Allamakee County offers.

Cook up a few trout with chanterelles on the side, relax and enjoy the peaceful surroundings and enjoy the holidays.



www.thenaturalgait.com
Call 877-776-2208

*Where nature plays
and your heart sings...
you'll want to stay forever!*



Mention this ad when reserving your cabin - receive 50% off your stay • Offer good on Sunday thru Thursday stays. Exp. 9/30/09

USING NATIVES IN YOUR BACKYARD TO ATTRACT NATURE

Turn a swath of mowed yard - a desert for wildlife - into an inviting oasis for butterflies and songbirds with hardy and colorful native perennials, all reared from remnants of Iowa prairie. Not only can you create lush habitat to beautify your property, but you will help restore small plots of native prairie plants too.

Bringing wildlife into your own yard is fun and unbelievably easy. You will be surprised by the amount of birds and butterflies that will come. Ion Exchange, Inc. is a native seed and plant nursery near Harpers Ferry that will carefully ship 1-inch plugs or seeds that are all native to Iowa, for you to create your backyard bird and butterfly haven. (article courtesy of Brian Button, Iowa Outdoors, Issue March/April 2009) Bird and Butterfly Attractor Stations, Rain Gardens, Living Walls, Wonders of the Prairie Garden or Urban Bird Garden packages are all available.

To order call: 1-800-291-2143 or online at www.ionxchange.com

Ion Exchange, Inc.



Contributors



RON HULSE of Knoxville has spent seven years photographing wildlife, insects and birds near Lake Red Rock when not cycling, hiking or volunteering. An avid paddler, he

also helps find sponsors to reintroduce osprey locally and raises awareness of siltation issues at the reservoir. He's a recent retiree with "more hobbies than I have time for."



TONY MOLINE is a Dubuque native, where he takes advantage of the area's natural beauty and diverse wildlife to craft his images. His photographic prints are available

through Outside the Lines Art Gallery in Dubuque's Cable Car Square. www.OTLAG.com. 377 Bluff Street, Dubuque. 563-583-9343



KEN BLOCK, a National Park Service ranger, left Grand Canyon National Park for the Effigy Mounds where he and his six kids often hike. Beginning his career in his home state of Pennsylvania at Valley Forge National Historic Park, Ken says northeast Iowa and the Upper Mississippi River is "some of the country's most stunning scenery."

DNR STAFF PHOTOGRAPHERS



CLAY SMITH witnesses some of Iowa's best images from behind his video and camera lenses. A professional photographer for more than 30 years, including

14 as videographer and producer for Iowa Public Television, he spent the last 10 as staff photographer for *Iowa Outdoors* magazine and www.iowadnr.gov. He lives in Urbandale with his wife, Gayle.



LOWELL WASHBURN began photographing birds at age 10 and is known for his images of waterfowl and wetland wildlife. After service during the Vietnam War, he returned to his native

Clear Lake in 1970. His photos and writing have appeared in over 50 magazines including *Outdoor Life*, *Field & Stream* and *Ducks Unlimited*. He's been a DNR staff writer and photographer since 1984.

IOWA OUTDOORS

NOVEMBER / DECEMBER 2009 • VOLUME 68 • ISSUE 6

(formerly the Iowa Conservationist)

STAFF

Kevin Baskins - BUREAU CHIEF

Brian Button - EDITOR-IN-CHIEF

Alan Foster - MANAGING EDITOR

Jacob Zweibohmer - ART DIRECTOR

Lowell Washburn; Joe Wilkinson - WRITER/PHOTOGRAPHER

Clay Smith - PHOTOGRAPHER

Julie Tack - MARKETING AND PUBLICITY

STATE PRESERVES ADVISORY BOARD

Cynthia Peterson - CHAIR, Iowa City

Stephen Dinsmore, Ames

Armando Rosales, Atlantic

Deborah Lewis, Ames

Carl Kurtz, St. Anthony

Patricia L. Boddy, Des Moines

Gail Brown, Mason City

Elizabeth Garst, Coon Rapids
(Two positions vacant)

ENVIRONMENTAL PROTECTION COMMISSION

Charlotte Hubbell - CHAIR, Des Moines

Marty Stimson - VICE-CHAIR, Cedar Rapids

Carrie La Seur - SECRETARY, Mount Vernon

Dale Cochran, Urbandale

Paul Johnson, Decorah

David Petty, Eldora

Susan Heathcote, Des Moines

Gene Ver Steeg, Inwood

Lorna Puntillo, Sioux City

NATURAL RESOURCE COMMISSION

Gregory Drees - CHAIR, Arnolds Park

Tammi Kircher - VICE-CHAIR, Keokuk

R. Kim Francisco - SECRETARY, Lucas

Janelle Rettig, Iowa City

SUBSCRIBER SERVICES • 800.361.8072

ADVERTISING OFFICE

Larson Enterprises, Dave Larson at 515.440.2810 or LARSON6@MCHSI.COM

DNR EXECUTIVE STAFF

Richard Leopold - DIRECTOR • Patricia L. Boddy - DEPUTY DIRECTOR

DIVISION ADMINISTRATORS

Sally Jagnandan - MANAGEMENT SERVICES

Ken Herring - CONSERVATION AND RECREATION • Wayne Gieselman - ENVIRONMENTAL SERVICES

DNR Central Office, 515.281.5918 • TTY users contact Relay Iowa, 800.735.2942

Iowa Outdoors (ISSN 0021-0471) is published bimonthly by the Iowa Department of Natural Resources, Des Moines, Iowa 50319-0034.

Periodicals postage paid Des Moines, IA. SUBSCRIPTION RATES: \$12 FOR ONE YEAR,

\$18 FOR TWO YEARS AND \$24 FOR THREE YEARS. PRICES SUBJECT TO CHANGE WITHOUT NOTICE. Include mailing label for renewals and address changes. POSTMASTER: Send changes to the *Iowa Outdoors*, P.O. Box 8462 Red Oak, IA 51591-1462.

Federal and state regulations prohibit discrimination on the basis of race, color, national origin, sex or disability. State law also prohibits discrimination on the basis of creed, sexual orientation, gender identity, religion, pregnancy or public accommodation. If you believe that you have been discriminated against in any program, activity, or facility as described above, or for more information, write: Director, DNR, 502 E. 9th St., Des Moines, IA 50319-0034 or the Equal Employment Opportunity Commission, Washington, D. C. 20240.

DNR MISSION

To conserve and enhance our natural resources in cooperation with individuals and organizations to improve the quality of life for Iowans and ensure a legacy for future generations.

EDITORIAL MISSION

We strive to open the door to the beauty and uniqueness of Iowa's natural resources, inspire people to get outside and experience Iowa and to motivate outdoor-minded citizens to understand and care for our natural resources.

MAKE A DIFFERENCE

The Keepers of the Land program matches volunteers with natural resource service needs statewide. Give back to Iowa's lands, waters and skies. Call 515-281-0878 to match your interests with needs or visit www.keepersoftheland.org.

HOW TO DONATE

Charitable giving of land, funds, and goods and services greatly enhances Iowa's outdoor living. Contact: Diane Ford at 515-281-6341.

SHOW YOUR SUPPORT

The DNR Nature Store offers apparel and gifts with profits for state parks. Order online at www.iowanaturestore.com.

SUBSCRIBER SERVICES

To subscribe, or for any subscription issues or questions call 1-800-361-8072 Monday through Friday from 7 a.m. to 11 p.m. or weekends 8 a.m. to 6 p.m. For ease in processing, please have an issue with a mailing label available at time of call. To purchase a single copy for \$3.50, call 515-281-5918.

LEARN MORE

Our webpage, www.iowadnr.gov, is loaded with information for all ages and needs. Buy licenses, reserve campsites or learn more about our environment online.





They grow up fast. Give them
a gift that will last a lifetime.

COLLEGE SAVINGS

Iowa
529 PLAN™

Michael L. Fitzgerald, Treasurer of State

Call 888-672-9116 • Visit www.collegesavingsiowa.com

Live green. Learn green. **Earn green.**

**Megan holding a
pallid sturgeon**

FACT: Biology majors can
study everything from
fish and wildlife to plant
ecosystems to human
medicine

After a snorkeling trip during her freshman year of high school, Megan Thul thought that she might like to study fish. As a Biology student at Iowa State University, she was convinced. With the help of the College of Agriculture and Life Sciences, Megan had the opportunity to study pallid sturgeon in the Missouri River. She worked to re-establish this endangered native species. With this experience on her resume, Megan hopes to begin her career on the water.

IOWA STATE UNIVERSITY
College of Agriculture and Life Sciences

515-294-2766 | www.agstudent.iastate.edu





DECEMBER 2009

IOWA OUTDOORS

SUNDAY

MONDAY

TUESDAY

WEDNESDAY

THURSDAY

FRIDAY

SATURDAY

		1	2	3	4	5
		Free songbirds exhibit, Pioneer Ridge Nature Center, Bloomfield 641-682-3091; Dec. 1-Jan. 21 Fishing season closes on Mississippi River below navigation dams 11-13 Muskie season closes on Iowa Great Lakes		Give Iowa Outdoors as a holiday gift. Order at 1-800-361-8072.	Fall turkey gun/bow season closes. Archery-only turkey and deer seasons close.	First shotgun deer season opens
6	7	8	9	10	11	12
	Pearl Harbor Remembrance Day	Give an Iowa Outdoors calendar as a holiday gift for just \$3.50. Order at 515-281-5918.	First shotgun deer season closes			Hanukkah Begins Second shotgun deer season begins
13	14	15	16	17	18	19
		Christmas bird count through end of Dec. 2010 hunting and fishing licenses go on sale.				Last day of Hanukkah
20	21	22	23	24	25	26
Second shotgun deer season closes	Late split deer and fall turkey bow season reopens. Late muzzleloader deer season begins.		Nonresident antlerless deer holiday season, Dec. 24-Jan. 2.		Christmas Day	
27	28	29	30	31	 <p>ON THE COVER: Bison at the Neal Smith Wildlife Refuge near Prairie City in Jasper County. In 2008, a herd of 30 bison were also reintroduced to the Broken Kettle Grassland in Plymouth County. -BY CLAY SMITH</p>	
Order extra calendars for just \$3.50 at 515-281-5918.			New Year's Eve Ring in the New Year at Honey Creek Resort. For event details call 877-677-3344.			



Canada geese in early season snow squall west of Nora Springs and north of the Shell Rock River.
-BY LOWELL WASHBURN



ORDER
NOW!
LIMITED PRINTS
AVAILABLE.

WILDLIFE FINE ART SO FINE...

FIRST PLACE - 2010 IOWA DUCK STAMP
FIRST PLACE - 2009 IOWA HABITAT STAMP
FIRST PLACE - 2009 IOWA TROUT STAMP

WWW.TOMASMILLERSTUDIOS.COM
515.205.8775

NOVEMBER 2009

S	M	T	W	T	F	S
1	2	3	4	5	6	7
8	9	10	11	12	13	14
15	16	17	18	19	20	21
22	23	24	25	26	27	28
29	30					

JANUARY 2010

S	M	T	W	T	F	S
					1	2
3	4	5	6	7	8	9
10	11	12	13	14	15	16
17	18	19	20	21	22	23
24	25	26	27	28	29	30
31						

The NEW

Seedling Catalogs are HERE!

Call 800-865-2477 today!

Or visit www.iowadnr.gov/forestry/catalog.html!



Plant trees from the State Forest Nursery.
We have been providing conservation for Iowans since the 1930s.

THE IOWA DNR STATE FOREST NURSERY can help you with your planting needs. We strive to produce the best planting stock in the industry. See the order form on the next page for seedling selections and let us know how we can help by calling **800-865-2477**, or visiting www.iowadnr.gov/forestry/.

STATE FOREST NURSERY ORDER FORM 2009-2010



CALL 800-865-2477 FAX 515-233-1131
www.iowadnr.gov/forestry/
2404 S Duff Ave, Ames, IA 50010

PLACE ORDERS
until sold out

AUGUST 1 - MAY 31

NAME _____		EMAIL _____	
ADDRESS _____		CITY _____	STATE _____ ZIP _____
DAYTIME PHONE _____		IS THIS PLANTING PART OF A COST SHARE PROGRAM? (Circle One) Y N	
<input type="checkbox"/> AMES PICK UP / week of pick up: _____ 1st choice _____ 2nd choice _____		<input type="checkbox"/> HOME DELIVERY / week of delivery: _____ 1st choice _____ 2nd choice _____	
ORDERED LAST YEAR? (Circle One) Y N		IF YES, PLEASE LIST ORDER # IF KNOWN: _____	
FALL 2009 or SPRING 2010 DELIVERY? (Circle One) FALL SPRING		IN WHICH COUNTY WILL YOU PLANT? _____	

MINIMUM ORDER IS 500 PLANTS except to fill in plantings from the previous year or for Specialty Packets which can be ordered individually.
WHEN ORDERING BY MAIL DO NOT SEND MONEY with your order. A bill will be sent later. Checks, VISA or MasterCard are accepted.

HARDWOODS		Seedling Price / 100	Size 8-16"	17-24"
Each species must be ordered in increments of 100. SHIPPING INFORMATION Orders will be shipped to any Iowa address for: \$5/100 plants for the 8-16" size; \$10/100 plants for the 17-24" size. Shipments to other states may require additional shipping charges.	Sugar Maple	\$37	\$52	
	Silver Maple	\$37	\$52	
	River Birch	\$37	\$52	
	Shellbark Hickory	\$40		
	Shagbark Hickory 6"-12" Seedlings			
	Northern Pecan	\$40	\$55	
	Hackberry	\$37	\$52	
	Kentucky Coffeetree	\$37	\$52	
	Black Walnut	\$40	\$55	
	Sycamore	\$37	\$52	
	Cottonwood 14" Cuttings	\$37		
	Cottonwood 12" Rooted Cuttings	\$37	\$37	male select
	Hybrid Poplar 14" Cuttings	\$37		
	Hybrid Poplar 12" Rooted Cuttings	\$37		
	Aspen	\$37		
	Cranden Hybrid			
	Black Cherry	\$37	\$52	
	White Oak	\$40	\$55	
	Swamp White Oak	\$40	\$55	
	Chinkapin Oak	\$40	\$55	
	Bur Oak	\$40	\$55	
	Black Oak	\$40		
	Pin Oak	\$40		
	Red Oak	\$40	\$55	
	Mixed Oak	\$40	\$55	
	Hybrid Willow 14" Cuttings	\$37		
	Hybrid Willow 12" Rooted Cuttings	\$37		
	American Linden or Basswood	\$40	\$55	

SPECIALTY PACKETS

Create-a-Packet		Species Name	Size
select 50 plants of each species \$110 price/pkt Quan <input type="checkbox"/>	1 st species:		
	2 nd species:		
	3 rd species:		
	4 th species:		
		\$110 price/pkt Quan <input type="checkbox"/>	Turkey Packet (200 plants) Bur Oak, White Oak, Pin Oak, Gray Dogwood
		\$110 price/pkt Quan <input type="checkbox"/>	Pheasant Packet (200 plants) Red Cedar, Wild Plum, Ninebark, Gray Dogwood
		\$110 price/pkt Quan <input type="checkbox"/>	Quail Packet (200 plants) Wild Plum, Gray Dogwood
		\$20 price/pkt Quan <input type="checkbox"/>	Songbird Packet (20 Plants) Bur Oak, White Pine, Wild Plum, Chokecherry, Gray Dogwood, Serviceberry

EVERGREENS (available spring only)		Seedling Price / 100	Size 8-16"	17-24"
Each species must be ordered in increments of 100.	Concolor or White Fir	\$25		
	Eastern Red Cedar	\$25	\$40	
	Norway Spruce	\$25	\$40	
	White Spruce	\$25	\$40	
	Jack Pine	\$25		
	Red Pine	\$25	\$40	
	Eastern White Pine	\$25	\$40	
	Scotch Pine	\$25		

SMALL TREES & SHRUBS

Each species must be ordered in increments of 100.	Black Chokeberry	\$40	\$55
	Serviceberry	\$40	\$55
	Buttonbush	\$40	\$55
	Silky Dogwood	\$37	\$52
	Gray Dogwood	\$37	\$52
	Redosier Dogwood	\$37	\$52
	Hazelnut		
	Ninebark	\$40	\$55
	Wild Plum	\$40	\$55
	Nanking Cherry	\$37	\$52
	Chokecherry	\$40	
	Sandbar Willow 16" Cuttings	\$40	
	Elderberry	\$37	\$52
	Arrowwood	\$40	\$55
	Nannyberry	\$40	\$55
	Highbush Cranberry	\$40	\$55

GIFT IDEAS

		Quan
Gift Certificate	Call 1-800-865-2477 to order!	

TO PURCHASE you must agree:

- to plant and use the nursery stock requested upon the described Iowa property for establishing or improving existing forests, erosion control, game or water conservation with these restrictions;
- to NOT resell or give these plants away with roots attached to any person, firm, corporation or agency nor to plant any of them for new windbreak, shade or ornamental purposes;
- to protect all planting from fire and domestic livestock grazing;
- to forfeit for destruction any trees planted or used in violation of the above restrictions.

STUDENTS
ages 5-19 in grades K-12

IOWATER

announces

RIVER of WORDS® 2010

Environmental Poetry & Art
International Competition



2009
IOWA WINNER
Grades K-3 ART

Rainbow Fish

Julia Jones
age 8

Knierim, Iowa

Deadline is Dec. 1, but entries are accepted year-round for next year's contest.



For more information and entry forms, contact:

Pat Lohmann, Iowa DNR, 109 Trowbridge Hall, Iowa City, IA 52242-1319

Phone: (319) 335-1575 Email: Pat.Lohmann@dnr.iowa.gov

www.iowater.net (click on River of Words)

Time Together
Make your vacation
memorable at Honey Creek



Winter Cabin Special – \$20 off stay

The luxury cabins range from 1-bedroom with lofts, 2-bedroom, and 4-bedrooms with two bathrooms. A family gathering or corporate outing, enjoy your retreat surrounded by Rathbun Lake, pristine acres of Honey Creek State Park and miles of trails. Use of all the resort amenities including the pirate-themed indoor water park and restaurant. Enjoy complimentary activities and interpretive programs by on-site naturalist staff.



HONEY CREEK RESORT
STATE PARK

ON RATHBUN LAKE

12633 Resort Drive, Moravia, Iowa 52571

Reservations: 877.677.3344

www.honeycreekresort.com

Valid for accommodations from October 19, 2009 through March 10, 2010. Must mention C809 code when making reservation. Based on availability. Offer not valid December 18, 2009 through January 1, 2010. Not valid with any other discounts or promotions. Some blackout dates may apply. Advanced reservations required. Room taxes and incidental charges not included in this offer. Offer does not apply to group events.



BACK ISSUES AVAILABLE FOR ONLY \$3.50 EACH
CALL 515-281-5918 TO ORDER YOUR ISSUES TODAY.



Trek It.

Hook It.

Unique Iowa outdoor apparel!

Profits from the Iowa Nature Store go directly to the improvement of our Iowa state parks.

- * T-shirts
- * Sweatshirts
- * Hats
- * Bags
- * Educational Materials



www.iowanaturestore.com



Hug It.



Tag It.



Float It.

Rough It.



JANUARY 2010

IOWA OUTDOORS

SUNDAY	MONDAY	TUESDAY	WEDNESDAY	THURSDAY	FRIDAY	SATURDAY																																																																																					
 <p>Cloaked in snow, Big Creek State Park in northern Polk County offers ice fishing and groomed cross country ski trails -BY CLAY SMITH</p>					<p>1</p> <p>New Year's Day Annual New Year's Day paddle below Saylorville Dam, Polk County</p>	<p>2</p> <p>Fox squirrels begin to mate</p>																																																																																					
<p>3</p> <p>Canada goose, brant season in north zone closes to hunting Look for bald eagles feeding below dams and open water areas</p>	<p>4</p>	<p>5</p>	<p>6</p>	<p>7</p>	<p>8</p>	<p>9</p> <p>Eighty-five delegates convene to REAP Congress, Iowa House of Representatives</p>																																																																																					
<p>10</p> <p>Pheasant, late muzzleloader and archery deer seasons close. Fall turkey archery season closes. 2009 licenses expire. Light goose season closes. Canada goose, brant season in south zone closes to hunting.</p>	<p>11</p> <p>Light goose conservation order opens. January antlerless deer season begins in southern Iowa.</p>	<p>12</p> <p>1912 State record low temperature set in Washta, -47°</p>	<p>13</p>	<p>14</p>	<p>15</p> <p>Mid-winter bald eagle and migratory bird counts begin.</p>	<p>16</p>																																																																																					
<p>17</p> <p>Fox and coyote mating season begins (mid to late January)</p>	<p>18</p> <p>Martin Luther King Jr. Day</p>	<p>19</p>	<p>20</p> <p>Registration for DNR hunting and conservation camps begins iowadnr.com/camps.html</p>	<p>21</p>	<p>22</p>	<p>23</p>																																																																																					
<p>24</p> <p>3rd Annual Bridal Show 11a.m. - 3p.m. at Honey Creek Resort State Park. For details call 877-677-3344.</p>	<p>25</p> <p>Aerial deer survey runs into February</p>	<p>26</p> <p>Best ice fishing occurs late December to mid-January. Domestic rainbow trout spawning peaks.</p>	<p>27</p> <p>Free songbirds exhibit at Nishna Bend Nature Center, Harlan. 712-744-3403; Jan. 27 - Mar. 31.</p>	<p>28</p> <p>Search woods for shed antlers.</p>	<p>29</p>	<p>30</p>																																																																																					
<p>31</p> <p>January antlerless deer season closes. Quail, partridge, ruffed grouse, squirrel and trapping (excluding beaver) seasons close.</p>	<div><div><p>26th Annual</p></div><div><p>Bald Eagle Appreciation Days January 16-17, 2010 Make It Yours KEOKUK KEOKUK AREA CONVENTION AND TOURISM BUREAU KEOKUKIOWATOURISM.ORG 800-383-1219</p></div><div></div></div>					<p>DECEMBER 2009</p> <table><tr><td>S</td><td>M</td><td>T</td><td>W</td><td>T</td><td>F</td><td>S</td></tr><tr><td></td><td></td><td>1</td><td>2</td><td>3</td><td>4</td><td>5</td></tr><tr><td>6</td><td>7</td><td>8</td><td>9</td><td>10</td><td>11</td><td>12</td></tr><tr><td>13</td><td>14</td><td>15</td><td>16</td><td>17</td><td>18</td><td>19</td></tr><tr><td>20</td><td>21</td><td>22</td><td>23</td><td>24</td><td>25</td><td>26</td></tr><tr><td>27</td><td>28</td><td>29</td><td>30</td><td>31</td><td></td><td></td></tr></table>	S	M	T	W	T	F	S			1	2	3	4	5	6	7	8	9	10	11	12	13	14	15	16	17	18	19	20	21	22	23	24	25	26	27	28	29	30	31			<p>FEBRUARY</p> <table><tr><td>S</td><td>M</td><td>T</td><td>W</td><td>T</td><td>F</td><td>S</td></tr><tr><td></td><td>1</td><td>2</td><td>3</td><td>4</td><td>5</td><td>6</td></tr><tr><td>7</td><td>8</td><td>9</td><td>10</td><td>11</td><td>12</td><td>13</td></tr><tr><td>14</td><td>15</td><td>16</td><td>17</td><td>18</td><td>19</td><td>20</td></tr><tr><td>21</td><td>22</td><td>23</td><td>24</td><td>25</td><td>26</td><td>27</td></tr><tr><td>28</td><td></td><td></td><td></td><td></td><td></td><td></td></tr></table>	S	M	T	W	T	F	S		1	2	3	4	5	6	7	8	9	10	11	12	13	14	15	16	17	18	19	20	21	22	23	24	25	26	27	28						
S	M	T	W	T	F	S																																																																																					
		1	2	3	4	5																																																																																					
6	7	8	9	10	11	12																																																																																					
13	14	15	16	17	18	19																																																																																					
20	21	22	23	24	25	26																																																																																					
27	28	29	30	31																																																																																							
S	M	T	W	T	F	S																																																																																					
	1	2	3	4	5	6																																																																																					
7	8	9	10	11	12	13																																																																																					
14	15	16	17	18	19	20																																																																																					
21	22	23	24	25	26	27																																																																																					
28																																																																																											



FEBRUARY 2010

IOWA OUTDOORS

SUNDAY	MONDAY	TUESDAY	WEDNESDAY	THURSDAY	FRIDAY	SATURDAY																																																																																				
	1 <i>Great horned owls are on the nest in early February</i>	2 <i>Groundhog Day 1934 work began on the Zebulon Pike Lock and Dam in Dubuque</i>	3 <i>State record low temperature tied in Elkader, -47 degrees, in 1996</i>	4 	5	6																																																																																				
7	8	9	10	11 <i>Cardinals and chickadees begin singing mating calls.</i>	12 <i>Great Backyard Bird Count Feb. 12-15 www.birdsource.org/gbbc 1875 Meteor strikes near Amana, leaving 800 pounds of meteorites</i>	13 <i>Romance Package says "I love you," Honey Creek Resort 877-677-3344</i>																																																																																				
14 <i>Valentine's Day</i>	15 <i>Walleye season closes on Iowa Great Lakes. President's Day</i>	16	17 <i>Ash Wednesday</i>	18 <i>1909 Wallace Stegner, prominent author and conservation voice, born at Lake Mills</i>	19	20 <i>Permanent ice fishing shelters must be removed from state lakes unless deadline is extended</i>																																																																																				
21 	22	23	24 <i>Turkey vultures return when snow melts and carcasses become visible</i>	25 <i>Chorus frogs begin singing as soon as ice goes out</i>	26 <i>1846 William F. "Buffalo Bill" Cody born near Le Claire</i>	27 <i>Cottontail hunting season ends tomorrow</i>																																																																																				
28  <i>Campsites can be reserved for Memorial Day weekend. Reserve at 1-877-IAPARKS or reserveiaparks.com</i>	<i>Although ice fishing slows, river fishing is excellent for walleyes in open water below dams.</i>					<i>Big buck in brutal, -38 degree wind chills and snow, Cerro Gordo County. -BY LOWELL WASHBURN</i>																																																																																				
					JANUARY <table> <tr><th>S</th><th>M</th><th>T</th><th>W</th><th>T</th><th>F</th><th>S</th></tr> <tr><td>3</td><td>4</td><td>5</td><td>6</td><td>7</td><td>8</td><td>9</td></tr> <tr><td>10</td><td>11</td><td>12</td><td>13</td><td>14</td><td>15</td><td>16</td></tr> <tr><td>17</td><td>18</td><td>19</td><td>20</td><td>21</td><td>22</td><td>23</td></tr> <tr><td>24</td><td>25</td><td>26</td><td>27</td><td>28</td><td>29</td><td>30</td></tr> <tr><td>31</td><td></td><td></td><td></td><td></td><td></td><td></td></tr> </table>	S	M	T	W	T	F	S	3	4	5	6	7	8	9	10	11	12	13	14	15	16	17	18	19	20	21	22	23	24	25	26	27	28	29	30	31							MARCH <table> <tr><th>S</th><th>M</th><th>T</th><th>W</th><th>T</th><th>F</th><th>S</th></tr> <tr><td></td><td>1</td><td>2</td><td>3</td><td>4</td><td>5</td><td>6</td></tr> <tr><td>7</td><td>8</td><td>9</td><td>10</td><td>11</td><td>12</td><td>13</td></tr> <tr><td>14</td><td>15</td><td>16</td><td>17</td><td>18</td><td>19</td><td>20</td></tr> <tr><td>21</td><td>22</td><td>23</td><td>24</td><td>25</td><td>26</td><td>27</td></tr> <tr><td>28</td><td>29</td><td>30</td><td>31</td><td></td><td></td><td></td></tr> </table>	S	M	T	W	T	F	S		1	2	3	4	5	6	7	8	9	10	11	12	13	14	15	16	17	18	19	20	21	22	23	24	25	26	27	28	29	30	31			
S	M	T	W	T	F	S																																																																																				
3	4	5	6	7	8	9																																																																																				
10	11	12	13	14	15	16																																																																																				
17	18	19	20	21	22	23																																																																																				
24	25	26	27	28	29	30																																																																																				
31																																																																																										
S	M	T	W	T	F	S																																																																																				
	1	2	3	4	5	6																																																																																				
7	8	9	10	11	12	13																																																																																				
14	15	16	17	18	19	20																																																																																				
21	22	23	24	25	26	27																																																																																				
28	29	30	31																																																																																							



IOWA OUTDOORS

SATURDAY

6

Look for returning robins and bluebirds.

Check out spring deals for outdoor wear, books and guides at www.iowanaturestore.com or 866-410-0230.

Woodcock mating display flights begin

*All That Wine & Jazz Weekend,
Honey Creek Resort 877-677-3344*

Owls will be on nestlings.
Daylight Saving Time starts

Dogs prohibited on all state-owned game management areas until July 15

Look for blooming pasque flowers

St. Patrick's Day

Spring peeper frogs may begin calling in eastern and southeast Iowa

Vernal Equinox - First Day of Spring

1961 Iowa Legislature chooses the oak as Iowa's official tree

Listen for gobbling wild turkeys.

Spring tree planting can begin if frost is gone from ground

Watch for coyote pups in wild areas

Cottontails may be seen courting—jumping airborne and chasing mates under the moonlight

Take photos of woodland Dutchman's breeches and dogtooth violets in bloom

Weekly trout stocking begins

After ice-out, migratory waterfowl return

Beavers begin making scent mounds of piled mud, grass and sticks coated with scent oils near ponds



Two juvenile bald eagles hone their aerial skills for hunting and defending territory in a form of aerial play near Lake Red Rock, Marion County.

-BY RON HUELSE

APRIL

S	M	T	W	T	F	S
	1	2	3	4	5	6
7	8	9	10	11	12	13
14	15	16	17	18	19	20
21	22	23	24	25	26	27
28						

S	M	T	W	T	F	S
				1	2	3
4	5	6	7	8	9	10
11	12	13	14	15	16	17
18	19	20	21	22	23	24
25	26	27	28	29	30	



APRIL

SUNDAY

MONDAY

IOWA OUTDOORS

PO Box 8462
Red Oak, IA 51591-1462

place
postage
here

DAY

SATURDAY

2

3

Full waterfowl migration typically underway

4

5

Campsite reservations begin for
Fourth of July weekend; 1-877-IAPARKS
or reserveiaparks.com
Easter Sunday

DNR's deer and raccoon spotlight
surveys typically begin
Walleye gill netting underway

11

12

13



14

15

16

17

Food demonstration, dinner & music
5-10 p.m. Honey Creek Resort 877-677-3344.

1954 Iowa Conservation Commission
launches first-in-the-nation TV show
"Outdoor Shop Talk" produced by staff

Reserve camp sites and cabins;
1-877-IAPARKS or reserveiaparks.com

Eagle hatch begins

Light goose conservation order ends
Watch water areas for return of shorebirds

Turkeys on nests incubating eggs

Around wetlands, look for return of garter
snakes from hibernation

18

19

20



21

22

23

24

Deer shed winter coats

Hike southern Iowa woods for morels

American toad begins singing

Save money and reduce emissions—
install compact fluorescent lightbulbs

40th Earth Day
1980 Iowa's earliest official 100° F day
recorded at Fort Dodge and Waterloo.

25

26

27



28

29

30

Bobcat mating begins

Catfish begin biting on dead fish in warm,
shallow waters

Arbor Day
Plant a shade tree on south or west side
of home to reduce cooling bills



Mounds in the morning mist, near Fire
Point, Effigy Mounds National Monument,
Clayton County.
—BY KEN BLOCK

Battle of Pea Ridge Civil War Reenactment

April 23-25, 2010

Make It Happen
KEOKUK
I O W A
RED RIVER AREA CONVENTION AND TOURISM BUREAU

KEOKUKIOWATOURISM.ORG
800-383-1219

23rd
Annual

MARCH

S	M	T	W	T	F	S
	1	2	3	4	5	6
7	8	9	10	11	12	13
14	15	16	17	18	19	20
21	22	23	24	25	26	27
28	29	30	31			

MAY

S	M	T	W	T	F	S
						1
2	3	4	5	6	7	8
9	10	11	12	13	14	15
16	17	18	19	20	21	22
23	24	25	26	27	28	29
30	31					

GIVE THE GIFT THAT LASTS ALL YEAR

6 BIG ISSUES FOR JUST \$12, INCLUDING A CALENDAR!

☐ BILL ME LATER ☐ CHECK ENCLOSED
OR CALL **1-800-361-8072** TO SUBSCRIBE TODAY



please allow 4 - 6 weeks for delivery

SEND GIFT TO:

NAME (PLEASE PRINT)

ADDRESS / APT.

CITY / STATE / ZIP

FROM:

NAME (PLEASE PRINT)

ADDRESS / APT.

CITY / STATE / ZIP

6/12

U09AC

APRIL

SUNDAY

MONDAY

4

Campsite reservations begin for Fourth of July weekend; 1-877-IAPARKS or reserveiaparks.com
Easter Sunday

5

DNR's deer and raccoon spotlight surveys typically begin
Walleye gill netting underway

11

Food demonstration, dinner & music 5-10 p.m. Honey Creek Resort 877-677-3344.

12

1954 Iowa Conservation Commission launches first-in-the-nation TV show "Outdoor Shop Talk" produced by staff

18

Deer shed winter coats

19

Hike southern Iowa woods for morels

25

Bobcat mating begins

26

Mounds in the morning mist, near Fire Point, Effigy Mounds National Monument, Clayton County.
-BY KEN BLOCK

13

Reserve camp sites and cabins; 1-877-IAPARKS or reserveiaparks.com

20

American toad begins singing

27

Catfish begin biting on dead fish in warm, shallow waters

14

Eagle hatch begins

21

Save money and reduce emissions—install compact fluorescent lightbulbs

28

15

Light goose conservation order ends
Watch water areas for return of shorebirds

22

40th Earth Day
1980 Iowa's earliest official 100° F day recorded at Fort Dodge and Waterloo.

29

Arbor Day
Plant a shade tree on south or west side of home to reduce cooling bills

16

Turkeys on nests incubating eggs

23

Around wetlands, look for return of garter snakes from hibernation

30

MAY

S	M	T	W	T	F	S
						1
2	3	4	5	6	7	8
9	10	11	12	13	14	15
16	17	18	19	20	21	22
23	24	25	26	27	28	29
30	31					

MARCH

S	M	T	W	T	F	S
	1	2	3	4	5	6
7	8	9	10	11	12	13
14	15	16	17	18	19	20
21	22	23	24	25	26	27
28	29	30	31			

Battle of Pea Ridge Civil War Reenactment
April 23-25, 2010
Make It Yours
KEOKUK
KEOKUK AREA CONVENTION AND TOURISM BUREAU
KEOKUKIOWATOURISM.ORG
800-383-1219

IOWA'S BEST OUTDOOR MAGAZINE

SUBSCRIBE AND SAVE!

25% off!

2 YEARS, ONLY \$18
1 YEAR, ONLY \$12

TWO YEAR SUBSCRIPTION

OR CALL 1-800-361-8072 TODAY TO SUBSCRIBE

□ BILL ME LATER □ CHECK ENCLOSED

please allow 4-6 weeks for delivery

NAME (PLEASE PRINT) _____
ADDRESS / APT. _____
CITY / STATE / ZIP _____

6 BIG ISSUES FOR JUST \$12, INCLUDING A CALENDAR!
GIVE THE GIFT THAT LASTS ALL YEAR

J09AC B/12

DAY

SATURDAY

2

3

9

10

Full waterfowl migration typically underway

the Fish and Wildlife income tax form.

Gosling hatch often begins this time of year

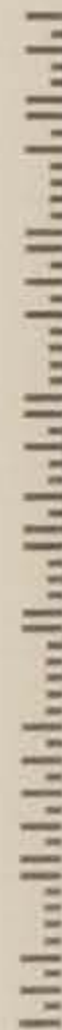


place
postage
here

|||

IOWA OUTDOORS

PO Box 8462
Red Oak, IA 51591-1462



APRIL 2010

IOWA OUTDOORS

SUNDAY	MONDAY	TUESDAY	WEDNESDAY	THURSDAY	FRIDAY	SATURDAY
				1	2	3
				April Fools' Day Beaver trapping season ends	Good Friday	Full waterfowl migration typically underway
4	5	6	7	8	9	10
Campsite reservations begin for Fourth of July weekend; 1-877-IAPARKS or reserveiaparks.com Easter Sunday	DNR's deer and raccoon spotlight surveys typically begin Walleye gill netting underway	Free songbirds exhibit, Hitchcock Nature Center, Pottawattamie County 712-545-3283; April 6 - June 9 1982 Iowa's latest subzero temperature recorded -9°F at Manchester	Sign up for bow hunting classes 641-747-8383 or iowadnr.gov/camps.html	Look for fox pups in wild areas	Support wildlife. Check the Fish and Wildlife Fund box on the Iowa income tax form.	Gosling hatch often begins this time of year
11	12	13	14	15	16	17
Food demonstration, dinner & music 5-10 p.m. Honey Creek Resort 877-677-3344.	1954 Iowa Conservation Commission launches first-in-the-nation TV show "Outdoor Shop Talk" produced by staff	Reserve camp sites and cabins; 1-877-IAPARKS or reserveiaparks.com	Eagle hatch begins	Light goose conservation order ends Watch water areas for return of shorebirds	Turkeys on nests incubating eggs	Around wetlands, look for return of garter snakes from hibernation
18	19	20	21	22	23	24
Deer shed winter coats	Hike southern Iowa woods for morels	American toad begins singing	Save money and reduce emissions—install compact fluorescent lightbulbs	40th Earth Day 1980 Iowa's earliest official 100°F day recorded at Fort Dodge and Waterloo.		
25	26	27	28	29	30	
Bobcat mating begins		Catfish begin biting on dead fish in warm, shallow waters			Arbor Day Plant a shade tree on south or west side of home to reduce cooling bills	



Mounds in the morning mist, near Fire Point, Effigy Mounds National Monument, Clayton County.
—BY KEN BLOCK

Battle of Pea Ridge Civil War Reenactment

April 23-25, 2010

Make It Yours
KEOKUK
KEOKUK AREA CONVENTION AND TOURISM BUREAU

KEOKUKIOWATOURISM.ORG
800-383-1219

23rd
Annual

MARCH

S	M	T	W	T	F	S
1	2	3	4	5	6	
7	8	9	10	11	12	13
14	15	16	17	18	19	20
21	22	23	24	25	26	27
28	29	30	31			


MAY

S	M	T	W	T	F	S
						1
2	3	4	5	6	7	8
9	10	11	12	13	14	15
16	17	18	19	20	21	22
23	24	25	26	27	28	29
30	31					



MAY 2010

IOWA OUTDOORS

SUNDAY	MONDAY	TUESDAY	WEDNESDAY	THURSDAY	FRIDAY	SATURDAY																																																																																				
 <p>1</p>	<p>2</p> <p>Fox scratching in lush, spring greenery of northeast Iowa —BY TONY MOLINE</p>	<p>3</p> <p>Spring tree planting ends State Forest Nursery stops taking seedling orders until August</p>	<p>4</p> <p>Best month to fish for most species. Fish are near shore and spawning. River fishing success depends on water clarity. Fish feeder streams or canals where water is warmer.</p>	<p>5</p> <p>Peak of neo-tropical bird migration through the month. Includes hummingbirds, warblers and orioles.</p>	<p>6</p> <p>Peak camping season begins. Make reservations at reserveiaparks.com or 1-877-IAPARKS.</p>	<p>7</p> <p>Walleye seasons opens on Iowa Great Lakes. Frank Lloyd Wright-designed Cedar Rock house opens for season near Quasqueton.</p>																																																																																				
<p>8</p> <p>1890 Huge meteor strikes 11 miles northwest of Forest City</p>	<p>9</p> <p>1886 Inaugural convention of the National Rivers Hall of Fame, Dubuque</p>	<p>10</p> <p>Look for return of whip-poor-wills</p>	<p>11</p> <p>Cinco de Mayo</p>	<p>12</p> <p>Red-tailed hawks nesting</p>	<p>13</p> <p>1897 General Assembly chooses wild rose as Iowa's official flower</p>	<p>14</p>																																																																																				
<p>15</p> <p>Mother's Day</p>	<p>16</p> <p>Yellow-headed blackbirds arrive Pheasants and quail begin nesting</p>	<p>17</p> <p>Watch water areas for beaver kits</p>	<p>18</p>	<p>19</p>	<p>20</p>	<p>21</p> <p>Armed Forces Day</p>																																																																																				
<p>22</p> <p>Robin nesting begins in southern Iowa. Bluebirds hatch first of two broods. Mourning doves cooing and mating.</p>	<p>23</p> <p>DNR begins mourning dove surveys</p>	<p>24</p>	<p>25</p>	<p>26</p>	<p>27</p>	<p>28</p>																																																																																				
<p>29</p> <p>Peregrine falcons begin hatching</p>	<p>30</p>	<p>31</p>	<p>Pheasant hatch begins Fawns born through first week of June</p>	<p>1920 Backbone dedicated as Iowa's first state park 1947 Snow falls over northwest two-thirds of state with 10 inches at Le Mars</p>	<p>APRIL</p> <table> <tr><th>S</th><th>M</th><th>T</th><th>W</th><th>T</th><th>F</th><th>S</th></tr> <tr><td></td><td></td><td></td><td></td><td>1</td><td>2</td><td>3</td></tr> <tr><td>4</td><td>5</td><td>6</td><td>7</td><td>8</td><td>9</td><td>10</td></tr> <tr><td>11</td><td>12</td><td>13</td><td>14</td><td>15</td><td>16</td><td>17</td></tr> <tr><td>18</td><td>19</td><td>20</td><td>21</td><td>22</td><td>23</td><td>24</td></tr> <tr><td>25</td><td>26</td><td>27</td><td>28</td><td>29</td><td>30</td><td></td></tr> </table>	S	M	T	W	T	F	S					1	2	3	4	5	6	7	8	9	10	11	12	13	14	15	16	17	18	19	20	21	22	23	24	25	26	27	28	29	30		<p>JUNE</p> <table> <tr><th>S</th><th>M</th><th>T</th><th>W</th><th>T</th><th>F</th><th>S</th></tr> <tr><td></td><td></td><td></td><td></td><td>1</td><td>2</td><td>3</td></tr> <tr><td>4</td><td>5</td><td>6</td><td>7</td><td>8</td><td>9</td><td>10</td></tr> <tr><td>11</td><td>12</td><td>13</td><td>14</td><td>15</td><td>16</td><td>17</td></tr> <tr><td>18</td><td>19</td><td>20</td><td>21</td><td>22</td><td>23</td><td>24</td></tr> <tr><td>25</td><td>26</td><td>27</td><td>28</td><td>29</td><td>30</td><td></td></tr> </table>	S	M	T	W	T	F	S					1	2	3	4	5	6	7	8	9	10	11	12	13	14	15	16	17	18	19	20	21	22	23	24	25	26	27	28	29	30	
S	M	T	W	T	F	S																																																																																				
				1	2	3																																																																																				
4	5	6	7	8	9	10																																																																																				
11	12	13	14	15	16	17																																																																																				
18	19	20	21	22	23	24																																																																																				
25	26	27	28	29	30																																																																																					
S	M	T	W	T	F	S																																																																																				
				1	2	3																																																																																				
4	5	6	7	8	9	10																																																																																				
11	12	13	14	15	16	17																																																																																				
18	19	20	21	22	23	24																																																																																				
25	26	27	28	29	30																																																																																					
<p>30</p> <p>1955 Rock Creek Lake near Newton and Green Valley Lake near Creston open to fishing. Limits of bass taken in 15 minutes. Almost 5,000 anglers at Green Valley.</p>	<p>31</p> <p>Memorial Day</p>																																																																																									



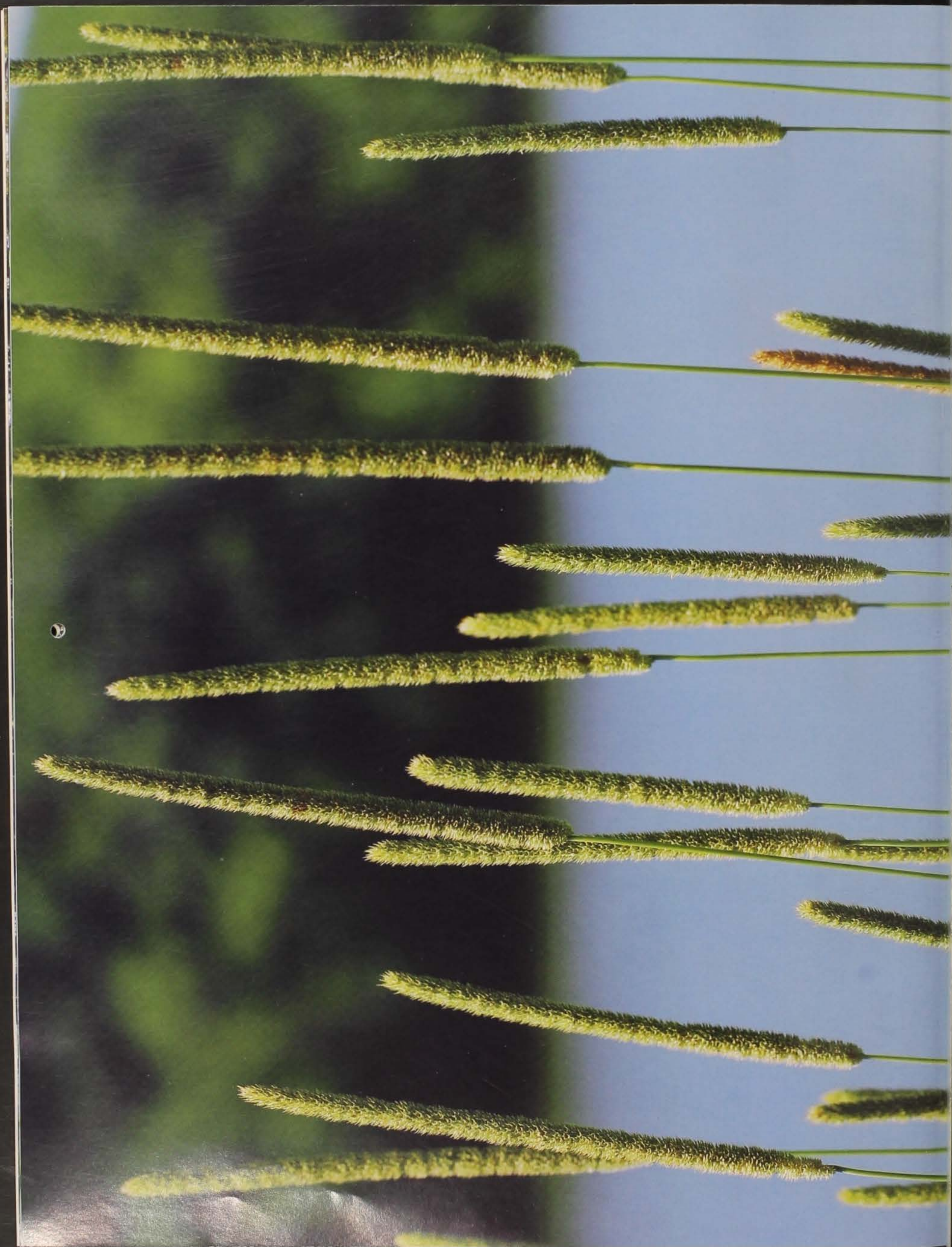
SATURDAY

Free Fishing Days

1



Marshalltown
make it your destination
CONVENTION & VISITORS BUREAU



JULY 2010

IOWA OUTDOORS

SUNDAY

MONDAY

TUESDAY

WEDNESDAY

THURSDAY

FRIDAY

SATURDAY

				1	2	3																																																																																											
		July is peak nesting time for goldfinch, the state bird	Turkey brood survey begins through early August	Cut cooling bills—close curtains on sunny sides of house																																																																																													
4	5	6	7	8	9	10																																																																																											
Independence Day	American Wilderness Leadership School, Springbrook Conservation Education Center, July 5-9, 641-747-8383 or iowadnr.gov/camps.html	Save fuel by checking vehicle tire pressure				Cool off at Maquoketa Caves State Park																																																																																											
11	12	13	14	15	16	17																																																																																											
Take kids hiking to look for fawns with doe		Outdoor Journey for Girls at Hickory Hills in Waterloo, July 13-15 iowadnr.gov/camps.html		Dogs allowed back on state-owned game management areas	Fourth annual Christmas in July at Backbone State Park in Delaware County through Saturday																																																																																												
18	19	20	21	22	23	24																																																																																											
		Eighty percent of game fish can be found in 20 percent of a stream. Move often to find fish.				Take kids streamwalking																																																																																											
25	26	27	28	29	30	31																																																																																											
1936 State record high temperature set in Atlantic and Logan at 117 degrees.	Low streams flows. Catfishing easiest in streams using cheese baits.		Hunting and Conservation Camp for Boys, Springbrook Conservation Education Center, July 28-30 641-747-8383 or iowadnr.gov/camps.html	Search prairies for blazing stars in bloom																																																																																													
 <p>Timothy (<i>Phleum pratense</i>) a non-native hay grass along Lake Ahquabi State Park south of Indianola. The species is good for browse plots and pheasant cover. To help remove non-beneficial species and restore native grasses, contact 515-281-0878 or visit keepersoftheland.org for volunteer opportunities.</p> <p>—BY CLAY SMITH</p>					<p>JUNE</p> <table> <tr><td>S</td><td>M</td><td>T</td><td>W</td><td>T</td><td>F</td><td>S</td></tr> <tr><td></td><td></td><td>1</td><td>2</td><td>3</td><td>4</td><td>5</td></tr> <tr><td>6</td><td>7</td><td>8</td><td>9</td><td>10</td><td>11</td><td>12</td></tr> <tr><td>13</td><td>14</td><td>15</td><td>16</td><td>17</td><td>18</td><td>19</td></tr> <tr><td>20</td><td>21</td><td>22</td><td>23</td><td>24</td><td>25</td><td>26</td></tr> <tr><td>27</td><td>28</td><td>29</td><td>30</td><td></td><td></td><td></td></tr> </table>	S	M	T	W	T	F	S			1	2	3	4	5	6	7	8	9	10	11	12	13	14	15	16	17	18	19	20	21	22	23	24	25	26	27	28	29	30				<p>AUGUST</p> <table> <tr><td>S</td><td>M</td><td>T</td><td>W</td><td>T</td><td>F</td><td>S</td></tr> <tr><td></td><td></td><td></td><td></td><td></td><td></td><td></td></tr> <tr><td>1</td><td>2</td><td>3</td><td>4</td><td>5</td><td>6</td><td>7</td></tr> <tr><td>8</td><td>9</td><td>10</td><td>11</td><td>12</td><td>13</td><td>14</td></tr> <tr><td>15</td><td>16</td><td>17</td><td>18</td><td>19</td><td>20</td><td>21</td></tr> <tr><td>22</td><td>23</td><td>24</td><td>25</td><td>26</td><td>27</td><td>28</td></tr> <tr><td>29</td><td>30</td><td>31</td><td></td><td></td><td></td><td></td></tr> </table>	S	M	T	W	T	F	S								1	2	3	4	5	6	7	8	9	10	11	12	13	14	15	16	17	18	19	20	21	22	23	24	25	26	27	28	29	30	31				
S	M	T	W	T	F	S																																																																																											
		1	2	3	4	5																																																																																											
6	7	8	9	10	11	12																																																																																											
13	14	15	16	17	18	19																																																																																											
20	21	22	23	24	25	26																																																																																											
27	28	29	30																																																																																														
S	M	T	W	T	F	S																																																																																											
1	2	3	4	5	6	7																																																																																											
8	9	10	11	12	13	14																																																																																											
15	16	17	18	19	20	21																																																																																											
22	23	24	25	26	27	28																																																																																											
29	30	31																																																																																															



ALFONSO

AUGUST 2010

IOWA OUTDOORS

SUNDAY

MONDAY

TUESDAY

WEDNESDAY

THURSDAY

FRIDAY

SATURDAY



Prairie blazing star (*Liatris pycnostachya*), rattlesnake master (*Eryngium yuccifolium*) and gray-headed coneflower (*Ratibida pinnata*) adorn Wolter's Prairie Preserve west of Clarksville in Butler County.
-BY CLAY SMITH

Locust songs peak during August

August roadside pheasant survey begins

1



2

3

4

5

6

7

Dove and duck banding begins

Federal waterfowl seasons are issued. State Forest Nursery begins accepting seedling orders for spring planting.

Watch for muskrats building huts and storing food.

Outdoor Journey for Girls at Springbrook Conservation Education Center, August 4-6

Shorebirds begin migrating south.

8



9

10

11

12

13

14

Watch skies for swallows in large flocks.

1915 Last log raft used by the lumber industry seen in Dubuque

Perseid meteor shower peaks later this week on Aug. 12-13

Join the DNR at the Iowa State Fair, Aug. 12-22

Waterfowl seasons presented to Iowa Natural Resource Commission Iowa State Fair begins

Visit the Nature Store at the DNR Building during the state fair for great deals

Hummingbirds prepare for migration by using feeders for the next 3-4 weeks

15



16

17

18

19

20

21

1867 Hordes of grasshoppers reported in western Iowa

Private cost-share REAP grant submittal deadline for city and county conservation REAP grants 4:30 p.m.

1963 Dutch Elm disease blamed for the deaths of thousands of trees

1804 The only death on the Lewis and Clark Expedition occurs in Iowa

22

23



24

25

26

27

28

Iowa State Fair ends

Deer start to shed antler velvet. Fawns start to lose spots.

Blue-winged teal and doves congregating for migration

1916 National Park Service established by U.S. Congress

29

30

31

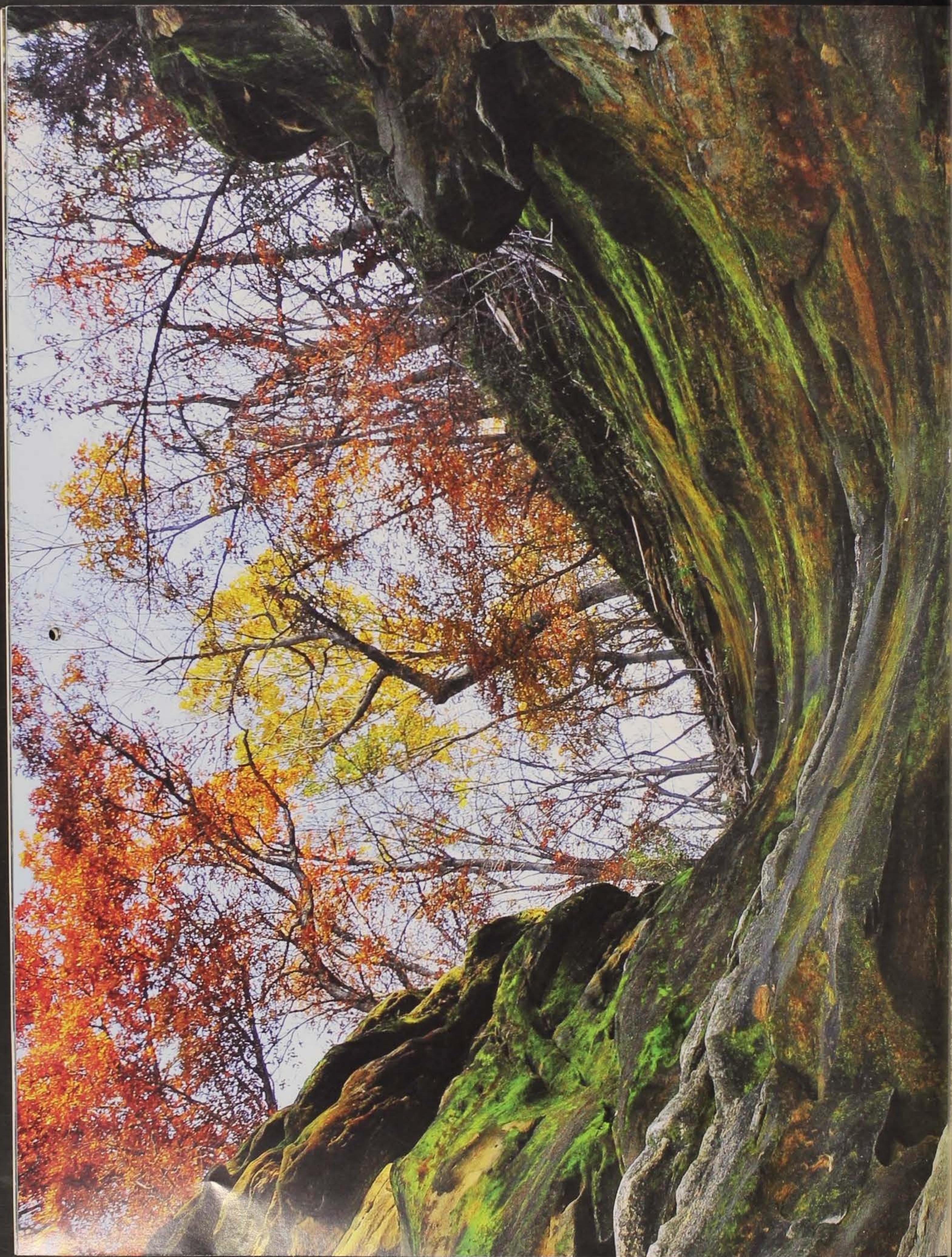
Pelican migration begins. Watch for flocks on reservoirs and large lakes.

JULY

S	M	T	W	T	F	S
				1	2	3
4	5	6	7	8	9	10
11	12	13	14	15	16	17
18	19	20	21	22	23	24
25	26	27	28	29	30	31

SEPTEMBER

S	M	T	W	T	F	S
			1	2	3	4
5	6	7	8	9	10	11
12	13	14	15	16	17	18
19	20	21	22	23	24	25
26	27	28	29	30		



SEPTEMBER 2010

IOWA OUTDOORS

SUNDAY

MONDAY

TUESDAY

WEDNESDAY

THURSDAY

FRIDAY

SATURDAY

			1	2	3	4
		Squirrels start cutting acorns from trees	REAP education grants due Nov. 1. www.iowareap.com			1890 The Morrison Electric auto introduced to Iowans in a parade in Des Moines. Rabbit and squirrel seasons open.
5	6	7	8	9	10	11
Take a family outing to view monarchs as they congregate for migration to Mexico	Labor Day	1953 Old Oscar, the 5-foot, 100-plus pound giant lake sturgeon always on display at the Iowa State Fair, dies			Plant conifers Sept. 10-30	Patriot Day
12	13	14	15	16	17	18
Mini Triathlon 6 a.m.-12 p.m. Honey Creek Resort 877-677-3344	Neotropical birds start to head south through end of month	Take a child to the woods to watch squirrels, bluejays and chipmunks caching acorns		1881 Earliest measurable snowfall set with 6-inch snowfall in western Iowa	1950 Ding Darling, famed cartoonist and conservationist, helps open Lake Darling State Park near Washington	Fall colors begin in northern Iowa. Youth/disabled hunter season begins. 1926 Unofficial one-day precipitation record set with 21.70-inch rain in Boyden.
19	20	21	22	23	24	25
4th Annual Bridal Show 11 a.m.-3 p.m. Honey Creek Resort 877-677-3344	Wood duck migration begins			Autumnal Equinox - First Day of Autumn	Fall colors begin in southern Iowa	First killing frost averages this date in extreme northern Iowa. Clad your kids in buckskin and head to the Ft. Atkinson Rendezvous held through Sunday in Winneshiek County.
26	27	28	29	30		
	1909 Earthquake felt in eastern Iowa	1953 Iowa's latest official 100°F temperature day with 103° at Glenwood		Peak season camping fees end		



Moss covered cliffs and fall color above Lake Red Rock, Marion County.
-BY RON HUELSE



Keokuk ROCKS!

Hunt Keokuk Geodes...Fun for the entire family!

Make It Yours

KEOKUK

KEOKUK AREA CONVENTION AND TOURISM BUREAU

KEOKUKIOWATOURISM.ORG
800-383-1219



AUGUST

S	M	T	W	T	F	S
1	2	3	4	5	6	7
8	9	10	11	12	13	14
15	16	17	18	19	20	21
22	23	24	25	26	27	28
29	30	31				

OCTOBER

S	M	T	W	T	F	S
					1	2
3	4	5	6	7	8	9
10	11	12	13	14	15	16
17	18	19	20	21	22	23
24	25	26	27	28	29	30
31						



OCTOBER 2010

IOWA OUTDOORS

SUNDAY

MONDAY

TUESDAY

WEDNESDAY

THURSDAY

FRIDAY

SATURDAY



Fall color and male wood duck along wooded edge of a northern Iowa wetland.
—BY LOWELL WASHBURN

3

4

5

6



7

1

2

1838 Chief Black Hawk dies at his home in Davis County.
Youth/disabled deer season ends.

Save money and energy—use programmable thermostats

Quail form into coveys

Compost instead of burning leaves

Lacey Keosauqua State Park Scenic Drive Festival this weekend. 319-293-3502

10

11

12

13



14

15

16

2nd Annual Arts & Crafts Show 10 a.m.-4 p.m. Honey Creek Resort 877-677-3344.

Fall turkey gun bow season begins.
Columbus Day

Fall colors peak Oct. 12-20

Plant broadleaf trees mid-October until the ground freezes.

Get your Hunt Iowa blaze orange hat at www.iowanaturestore.com or 1-866-410-0230

Early muzzleloader deer season begins

17

18

19

20

21



22

23

Squirrels begin building leaf nests

First killing frost averages this date in extreme southeast Iowa

Youth pheasant season, Oct. 23-24

24

25

26

27

28

29



30

Early muzzleloader deer season closes

1949 Effigy Mounds National Monument designated

1925 Earliest subzero temperature with -5°F at Little Sioux.

Haunted Halloween Festival 12 p.m.-11 p.m. Honey Creek Resort 877-677-3344.
Pheasant and quail seasons begin

31

Halloween

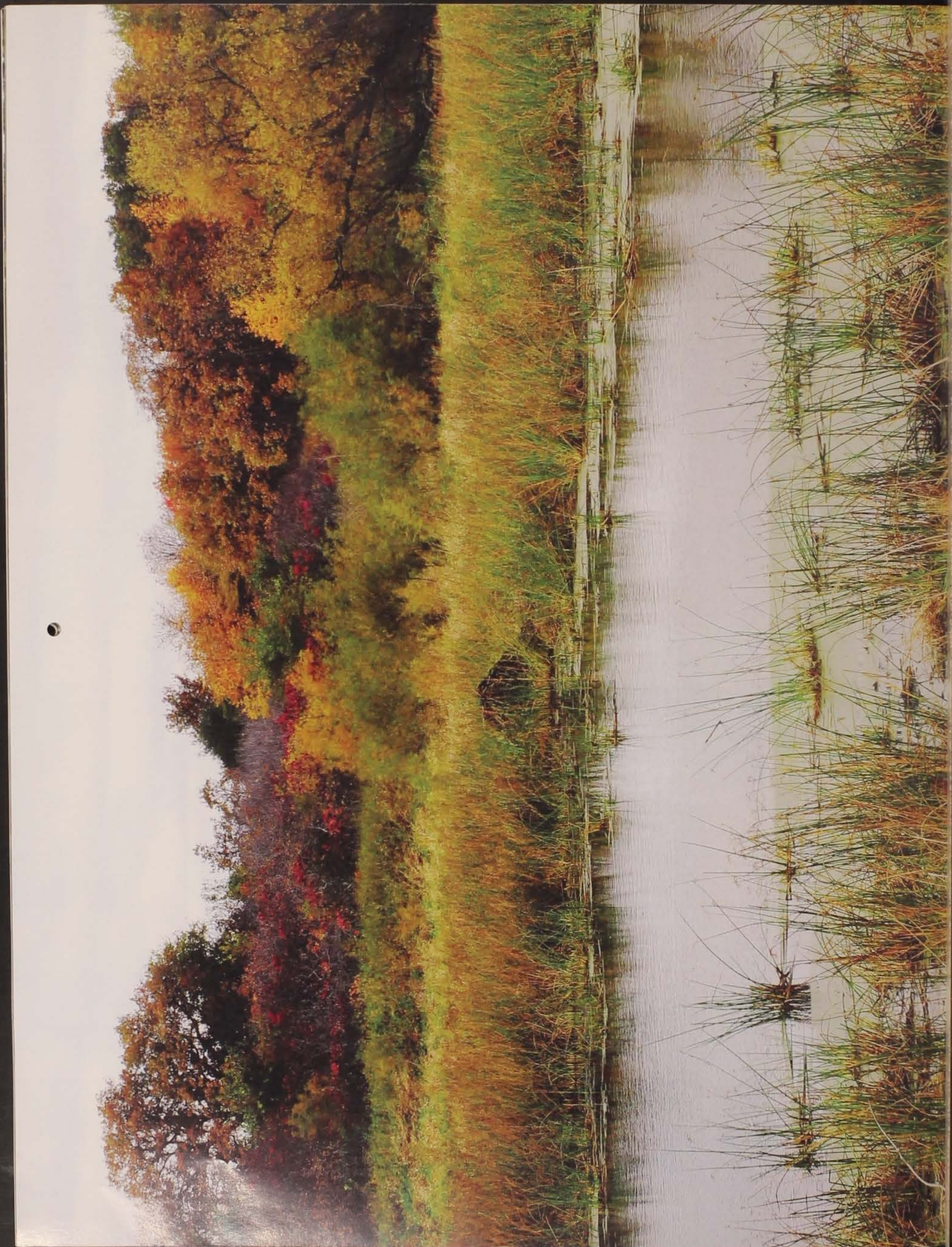
1991 Halloween blizzard and ice storm last until Nov. 1, leave 16 inches of snow in northwest Iowa with 60 mph gusts. Catastrophic ice storm from Clarinda to Forest City followed by bitter cold.

SEPTEMBER

S	M	T	W	T	F	S
			1	2	3	4
5	6	7	8	9	10	11
12	13	14	15	16	17	18
19	20	21	22	23	24	25
26	27	28	29	30		

NOVEMBER

S	M	T	W	T	F	S
	1	2	3	4	5	6
7	8	9	10	11	12	13
14	15	16	17	18	19	20
21	22	23	24	25	26	27
28	29	30				



NOVEMBER 2010

IOWA OUTDOORS

SUNDAY

MONDAY

TUESDAY

WEDNESDAY

THURSDAY

FRIDAY

SATURDAY

1

2

3

4

5

6

All Saints' Day

Election Day

Peak flights of duck migration

Turn in poachers to TIP Hotline:
1-800-532-2020 or iowadnr.gov

Furbearer hunting and trapping seasons begin

7

8

9

10

11

12

13

Daylight Saving Time ends

Peak of the deer rut

Veterans Day

1940 Armistice Day blizzard kills duck
hunters along Mississippi River, totalling
160 lives across the Midwest.

Wild Game Feed 6 p.m.-11 p.m.
Honey Creek Resort 877-677-3344

Save energy by replacing furnace filter

14

15

16

17

18

19

20

Leonid meteor shower Nov. 17-18

Mentored Outdoor Experience deer hunt,
Springbrook Conservation Education Center,
Nov. 19-21

21

22

23

24

25

26

27

Holiday Wine and Jazz Event
6 p.m.-11 p.m. Honey Creek Resort.
For details call 877-677-3344

Thanksgiving Day

November antlerless deer season begins

Take a family outing to watch eagles
along rivers

28

19

30

Give Iowa Outdoors as a holiday gift.
Order at 1-800-361-8072.

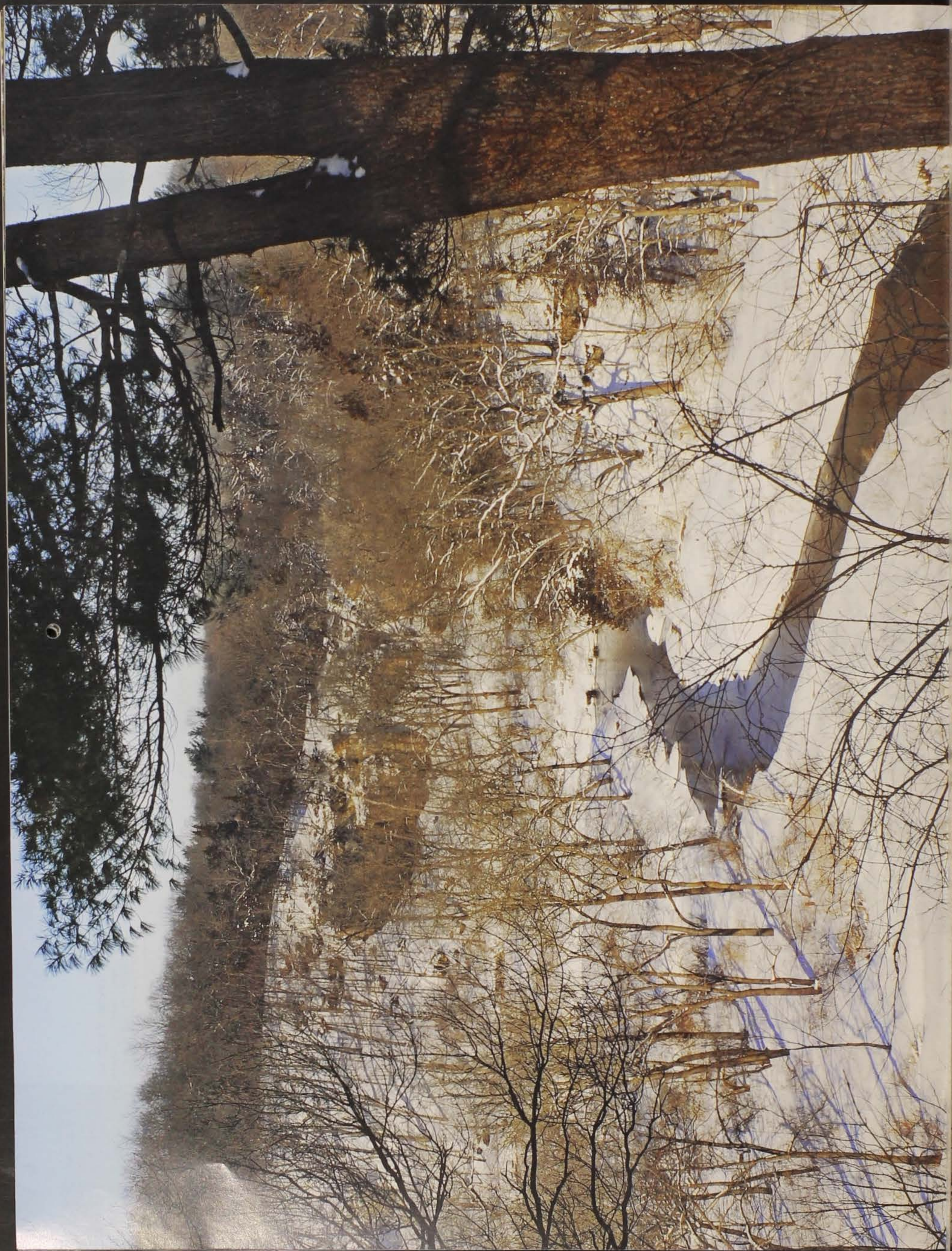
A muskrat den is framed by a perfect
autumn day at Mallard Marsh,
northern Cerro Gordo County.
—BY LOWELL WASHBURN

OCTOBER

S	M	T	W	T	F	S
					1	2
3	4	5	6	7	8	9
10	11	12	13	14	15	16
17	18	19	20	21	22	23
24	25	26	27	28	29	30
31						


DECEMBER

S	M	T	W	T	F	S
			1	2	3	4
5	6	7	8	9	10	11
12	13	14	15	16	17	18
19	20	21	22	23	24	25
26	27	28	29	30	31	



DECEMBER 2010

IOWA OUTDOORS

SUNDAY	MONDAY	TUESDAY	WEDNESDAY	THURSDAY	FRIDAY	SATURDAY																																																	
			1	2	3	4																																																	
		Order gifts from www.iowanaturestore.com or 866-410-0230	Fishing season closes on Mississippi River below navigation dams 11-13. Muskie season closes on Iowa Great Lakes. Hanukkah Begins	Give Iowa Outdoors as a holiday gift. Order at 1-800-361-8072.	Fall turkey gun/bow season closes. Archery only turkey and deer seasons close.	First shotgun deer season opens.																																																	
● 5	6	7	8	9	10	11																																																	
	Give this calendar as a holiday gift. Just \$3.50. Order at 515-281-5918.	Pearl Harbor Remembrance Day	First shotgun deer season closes	Last day of Hanukkah		Second shotgun deer season begins																																																	
12 ●	13	14	15	16	17	18																																																	
	Geminid meteor shower Dec. 13-14		Christmas bird count through end of December. 2011 hunting and fishing licenses go on sale.																																																				
19	20 ●	21	22	23	24	25																																																	
Second shotgun deer season closes	Late split deer and fall turkey bow season reopens. Late muzzleloader deer season begins.	Winter Solstice—First Day of Winter			Nonresident antlerless deer holiday season, Dec. 24 – Jan. 2.	Christmas Day																																																	
26 ●	27	28	29	30	31																																																		
					New Year's Eve Ring in the New Year at Honey Creek Resort. For event details call 877-677-3344.																																																		
 <p>Backbone State Forest, adjacent the northeast corner of Backbone State Park in Delaware County. The area is popular for hiking, horses, skiing and hunting. —BY CLAY SMITH</p>			●		NOVEMBER <table> <tr><th>S</th><th>M</th><th>T</th><th>W</th><th>T</th><th>F</th><th>S</th></tr> <tr><td></td><td>1</td><td>2</td><td>3</td><td>4</td><td>5</td><td>6</td></tr> <tr><td>7</td><td>8</td><td>9</td><td>10</td><td>11</td><td>12</td><td>13</td></tr> <tr><td>14</td><td>15</td><td>16</td><td>17</td><td>18</td><td>19</td><td>20</td></tr> <tr><td>21</td><td>22</td><td>23</td><td>24</td><td>25</td><td>26</td><td>27</td></tr> <tr><td>28</td><td>29</td><td>30</td><td></td><td></td><td></td><td></td></tr> </table>		S	M	T	W	T	F	S		1	2	3	4	5	6	7	8	9	10	11	12	13	14	15	16	17	18	19	20	21	22	23	24	25	26	27	28	29	30											
S	M	T	W	T	F	S																																																	
	1	2	3	4	5	6																																																	
7	8	9	10	11	12	13																																																	
14	15	16	17	18	19	20																																																	
21	22	23	24	25	26	27																																																	
28	29	30																																																					
					JANUARY 2011 <table> <tr><th>S</th><th>M</th><th>T</th><th>W</th><th>T</th><th>F</th><th>S</th></tr> <tr><td></td><td></td><td></td><td></td><td></td><td></td><td>1</td></tr> <tr><td>2</td><td>3</td><td>4</td><td>5</td><td>6</td><td>7</td><td>8</td></tr> <tr><td>9</td><td>10</td><td>11</td><td>12</td><td>13</td><td>14</td><td>15</td></tr> <tr><td>16</td><td>17</td><td>18</td><td>19</td><td>20</td><td>21</td><td>22</td></tr> <tr><td>23</td><td>24</td><td>25</td><td>26</td><td>27</td><td>28</td><td>29</td></tr> <tr><td>30</td><td>31</td><td></td><td></td><td></td><td></td><td></td></tr> </table>		S	M	T	W	T	F	S							1	2	3	4	5	6	7	8	9	10	11	12	13	14	15	16	17	18	19	20	21	22	23	24	25	26	27	28	29	30	31					
S	M	T	W	T	F	S																																																	
						1																																																	
2	3	4	5	6	7	8																																																	
9	10	11	12	13	14	15																																																	
16	17	18	19	20	21	22																																																	
23	24	25	26	27	28	29																																																	
30	31																																																						

State Library Of Iowa
State Documents Center
Miller Building
Des Moines, Iowa



DECEMBER 2009



JANUARY



FEBRUARY



MARCH



APRIL



MAY



JUNE



JULY



SEPTEMBER



OCTOBER



AUGUST 2010

IOWA
OUTDOORS

SUNDAY	MONDAY	TUESDAY	WEDNESDAY	THURSDAY	FRIDAY	SATURDAY
1	2	3	4	5	6	7
8	9	10	11	12	13	14
15	16	17	18	19	20	21
22	23	24	25	26	27	28
29	30	31				

2010 Calendar

WWW.IOWAOUTDOORMAGAZINE.COM



NOVEMBER



DECEMBER