

Iowa
CONSERVATIONIST

December 1982

SPECIAL CALENDAR ISSUE • \$3

TATE LIBRARY OF IOWA
East 12th & Grand
DES MOINES, IOWA 50319



STATE LIBRARY OF IOWA
East 12th & Grand
DES MOINES, IOWA

SUNDAY MONDAY TUESDAY WEDNESDAY THURSDAY FRIDAY SATURDAY

SUNDAY MONDAY TUESDAY WEDNESDAY THURSDAY FRIDAY SATURDAY

DECEMBER
S M T W T F S
1 2 3 4 5
6 7 8 9 10 11 12
13 14 15 16 17 18 19
20 21 22 23 24 25 26
27 28 29 30 31

FEBRUARY
S M T W T F S
1 2 3 4 5 6
7 8 9 10 11 12 13
14 15 16 17 18 19 20
21 22 23 24 25 26 27
28

1

New Year's Day

2

3

4

5

6

7

8

FULL MOON

9

10

11

12

13

14

15

16

17

18

Martin Luther
King, Jr., Day

19

20

21

22

NEW MOON

23

24
31

25

26

27

28

29

30

Empty seas, without
the enormous diver-
sity of life, birdless
skies and cultivated
land occupied only
by people and a
handful of creatures
bred expressly to
service people is
something I find too
appalling to contem-
plate.

-- Jack Rudloe,
*Living Dock at
Panacea*



Male cardinal.
Photo by Ty Smedley

Top photo: Northeast Iowa winter scenic. Photo by Ron Johnson.

January



February

SUNDAY

MONDAY

TUESDAY

WEDNESDAY

THURSDAY

FRIDAY

SATURDAY



1

2

Ground Hog Day

3

4

5

6

FULL MOON

7

8

9

10

11

12

Lincoln's
Birthday

13

14

Valentine's Day

15

President's Day

16

17

18

19

20

21

NEW MOON

22

Washington's
Birthday

23

24

Ash Wednesday

25

26

27

28

JANUARY
S M T W T F S
1 2
3 4 5 6 7 8 9
10 11 12 13 14 15 16
17 18 19 20 21 22 23
24 25 26 27 28 29 30
31

MARCH
S M T W T F S
1 2 3 4 5 6
7 8 9 10 11 12 13
14 15 16 17 18 19 20
21 22 23 24 25 26 27
28 29 30 31

Those things are
better, which are
perfected by
nature, than those
which are finished
by art.
-- Cicero



Drake ring-necked.
Photo by Ty Smedes.

Top photo: Snowy owl. Photo by Lowell Washburn.



March

SUNDAY	MONDAY	TUESDAY	WEDNESDAY	THURSDAY	FRIDAY	SATURDAY
	 1	2	3	4	5	6
7	8 FULL MOON	9	10	11	12	13
14	15	16	17 St. Patrick's Day	18	19	20
21	22	23 NEW MOON	24	25	26	27
28	29	30	31		FEBRUARY S M T W T F S 1 2 3 4 5 6 7 8 9 10 11 12 13 14 15 16 17 18 19 20 21 22 23 24 25 26 27 28	APRIL S M T W T F S 1 2 3 4 5 6 7 8 9 10 11 12 13 14 15 16 17 18 19 20 21 22 23 24 25 26 27 28 29 30

We in the United States have been slow to learn that our wildlife, like other forms of natural wealth, must be vigorously protected if we are to continue to enjoy its benefits.
-- Rachel Carson



Black-capped chickadee
Photo by Ty Smedes.

Top photo: Trumpeter swan and cignets. Photo by Lowell Washburn.



MONDAY
TUESDAY
WEDNESDAY
THURSDAY
FRIDAY
SATURDAY
SUNDAY

SUNDAY

MONDAY

TUESDAY

WEDNESDAY

THURSDAY

FRIDAY

SATURDAY

MARCH
S M T W T F S
1 2 3 4 5 6
7 8 9 10 11 12 13
14 15 16 17 18 19 20
21 22 23 24 25 26 27
28 29 30 31

MAY
S M T W T F S
1
2 3 4 5 6 7 8
9 10 11 12 13 14 15
16 17 18 19 20 21 22
23 24 25 26 27 28 29
30 31



1

April Fool's Day

2

3

If spring came but
once a century
instead of once a
year, or burst forth
with the sound of an
earthquake and not
in silence, what
wonder and
expectation there
would be in all
hearts to behold the
miraculous change.
--Henry Wadsworth
Longfellow

4

Daylight Savings
Time begins

Palm Sunday

5

6

Passover
FULL MOON

7

8

9

Good Friday

10

11

Easter Sunday

12

13

14

15

16

17

18

19

20

21

NEW MOON

22

Earth Day

23

Arbor Day

24

25

26

27

28

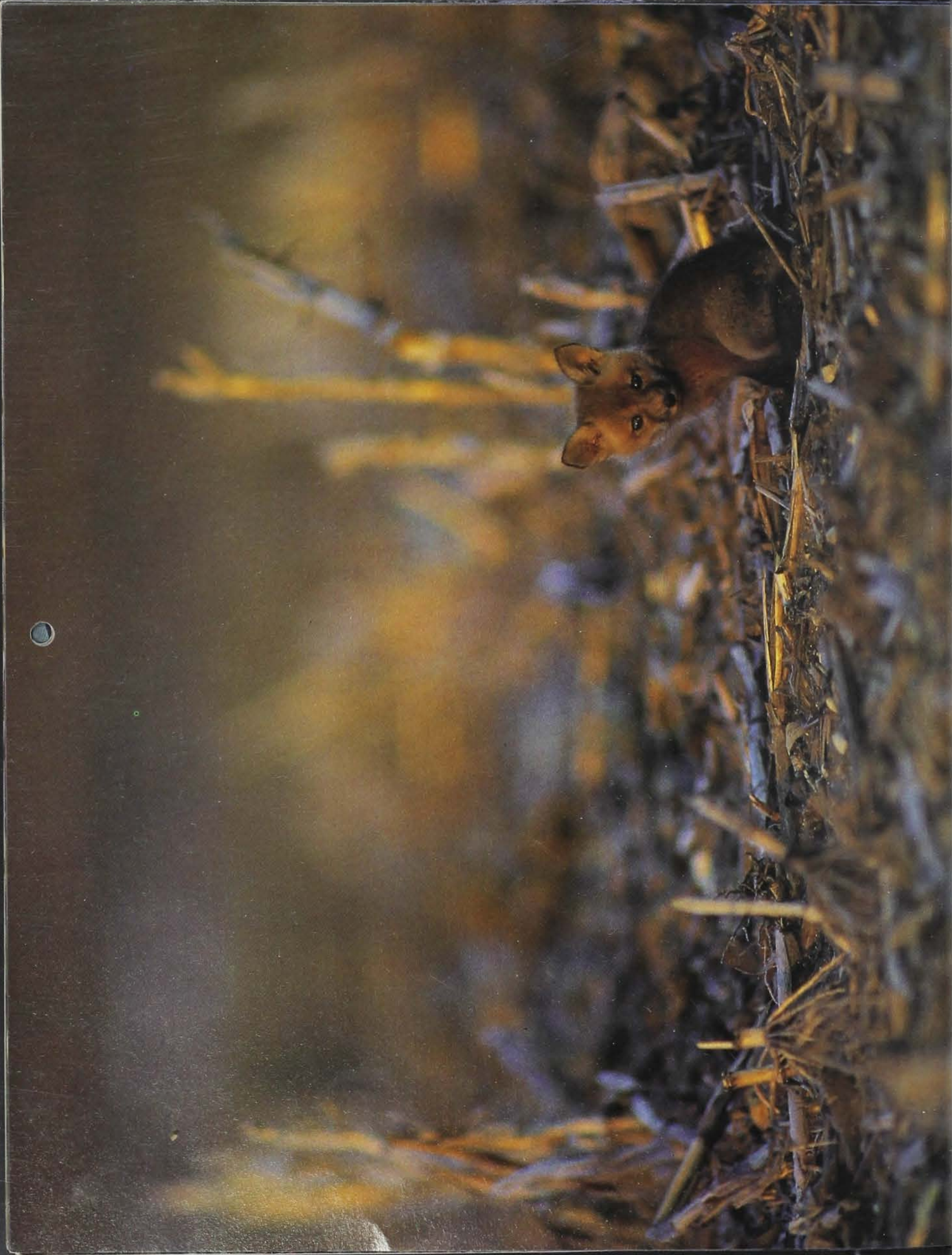
29

30



Eastern wild turkeys. Photos by Roger A. Hill.

April



SUNDAY

MONDAY

TUESDAY

WEDNESDAY

THURSDAY

FRIDAY

SATURDAY

SUNDAY

MONDAY

TUESDAY

WEDNESDAY

THURSDAY

FRIDAY

SATURDAY

APRIL
S M T W T F S
1 2 3
4 5 6 7 8 9 10
11 12 13 14 15 16 17
18 19 20 21 22 23 24
25 26 27 28 29 30

JUNE
S M T W T F S
1 2 3 4 5
6 7 8 9 10 11 12
13 14 15 16 17 18 19
20 21 22 23 24 25 26
27 28 29 30

1

May Day

2

3

4

5

6

FULL MOON

7

8

9

Mother's Day

10

11

12

13

14

15

Armed Forces
Day

16

17

18

19

20

21

22

NEW MOON

23
3024
31Memorial Day
(Observed)

25

26

27

28

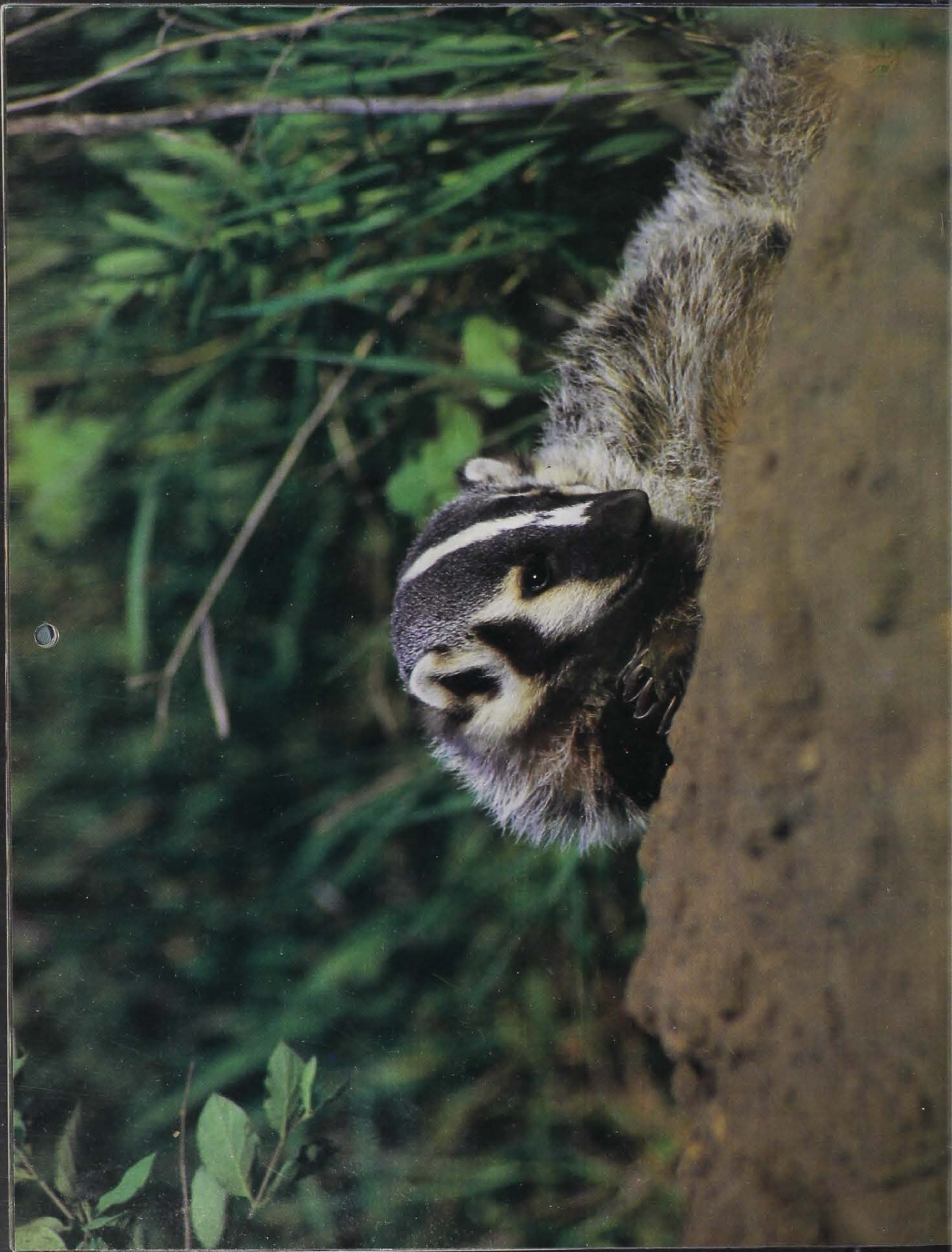
29

The land is one
organism. Its parts,
like our own parts,
compete with each
other and cooperate
with each other.
-- Aldo Leopold,
Round River



Red foxes. Photos by Roger A. Hill.

May



SUNDAY

MONDAY

TUESDAY

WEDNESDAY

THURSDAY

FRIDAY

SATURDAY

MAY

S	M	T	W	T	F	S
						1
2	3	4	5	6	7	8
9	10	11	12	13	14	15
16	17	18	19	20	21	22
23	24	25	26	27	28	29
30	31					

JULY

S	M	T	W	T	F	S
				1	2	3
4	5	6	7	8	9	10
11	12	13	14	15	16	17
18	19	20	21	22	23	24
25	26	27	28	29	30	31

1

2

3

4

5

FULL MOON

The last word in
ignorance is the
man who says of an
animal or plant:
'What good is it?'
-- Aldo Leopold

6

7

8

9

10

11

12

13

14

Flag Day

15

16

17

18

19

20

Father's Day
NEW MOON

21

22

23

24

25

26

27

28

29

30



Cecropia moth
caterpillar. Photo by
Bruce A. Morrison.

Top photo: Badger. Photo by Roger A. Hill.

June





DON'T duck A GREAT DEAL!

Order your *Iowa Conservationist* Christmas gift subscriptions now, you can **save 40%** by taking advantage of our low, low rate of **just \$6 for one year**. And, there is **no limit** on the number of gift subscriptions you can purchase!

Order now and we will begin each gift subscription with the January/February 1993 issue. Plus, we will send each gift recipient a 1993 calendar -- a \$3 value at no extra charge! And, we will also send a personalized gift card, from you, to each gift recipient.

Give the gift that keeps on giving -- all year. But, **hurry . . .** and duck the higher subscription rates going into effect January 1, 1993!

If the order form is missing, send names and addresses, along with \$6 for each subscription, to: *Iowa Conservationist*, Iowa Department of Natural Resources, Wallace State Office Building, Des Moines, Iowa 50319-0034. Additional calendars may also be ordered for \$3 each. Quantities are limited. This offer expires December 31, 1992.



Celebrate a Wild Idea!

Iowa's Nongame Program's accomplishments during its first decade are as varied and numerous as the species it benefits. However, in spite of a tremendous first decade of growth, much more remains to be done if Iowa is to have a nongame program that will provide for the future needs of its wildlife and people.

Please, give to the Fish and Wildlife Checkoff on your state income tax return.

Eastern bluebird.
Photo by Carl Kurtz.

1992 IOWA CONSERVATIONIST INDEX

AGENA, UBBO

*Getting to the Point** (May 1991), January/February, 63

ANDREWS, RONALD D.

*Iowa's Little Known \$ Million Fur Industry** (November 1976),

January/February, 39

*Privacy Ends -- Foxes are "Bugged" by Biologists** (January 1971),

January/February, 35

The Red Fox -- A Controversial Character, July/August, 24

BARRATT, BOB

*Where Goes the Iowa Duck?** (August 1963), January/February, 28

BISHOP, RICHARD A.

*New Program Will Boost Wildlife** (September 1986), January/February, 52

Still a Bargain, June, 25

*The Point System Adds Up -- to Wise Duck Management** (September 1970),

January/February, 34

BROWN, J. EDWARD

Endangered Groundwater? New Strategies for Protecting Iowa's

*Underground Water Supplies** (August 1987), January/February, 55

The Missouri River, September/October, 25

BUCKMANN, CAROL

*First "Muskie" for West Okoboji** (October 1961), January/February, 25

*Mystery and Beauty -- Spring Goose Flight** (March 1962),

January/February, 25

BULMAN, JIM

Iowa's Other State Forests, July/August, 60

BUNKER, BILL J.

Lithograph City, June, 8

CAHAIL, SCOTT

A Slick Solution, July/August, 18

CALE, PATRICIA S.

Danger In The Air?, July/August, 9

Energizing the Future, June, 14

Showers of Savings, May, 25

CARRIER, MICHAEL

*The Compromise** (January 1989), January/February, 57

CLASSROOM CORNER

April, 23; July/August, 47; June, 23; March, 23; May, 23; September/October, 49

COOK, RANDALL

Stephens State Forest, March, 30

CORIO, ANGELA

Pikes Peak State Park, September/October, 58

COTTAM, CLARENCE

*Chemical Controls vs. Wildlife** (July 1952), January/February, 17

COULTER, KIMBERLY K.

Banking on Quality Streams, September/October, 51

Raindrops Keeping Falling ..., June, 4

DARLING, JAY N. "DING"

*Conservation Can't Wait** (April 1947), January/February, 10

*Poverty or Conservation Your National Problem, Says "Ding,"**

(December 1944) January/February, 8

DEGAN, DON

*Return of the Brookies** (April 1979), January/February, 41

DEKOCK, DUANE

*It's Official -- Iowa's First Arbor Day** (April 1960), January/February, 24

EDUCATION

Classroom Corner, April, 23; July/August, 47; June, 23; March, 23; May, 23; September/October, 49

*Conservation School for Teachers** (March 1950), January/February, 16

*The Aquatic Education Program -- Fish Iowa!** (March 1990),

January/February, 61

*The Outdoor Classroom -- "An Activity Worth a Million Words"**

(June 1968), January/February, 30

ELIN, KRIS

*The Outdoor Classroom -- "An Activity Worth a Million Words"**

(June 1968), January/February, 30

EMERSON, REX

*Warden's Diary** (July 1975), January/February, 43

ENERGY

Danger In The Air?, July/August, 9

Energetic Organizations Win Awards, September/October, 46

Energizing the Future, June, 14

*Inflation and the Energy Crisis Hits State Areas** (April 1974),

January/February, 37

*Life, Liberty and the Pursuit of Mobility** (June 1991), January/February, 62

*More For Your Money** (July 1991), January/February, 61

Showers of Savings, May, 25

The Missouri River, September/October, 25

They're Not Just For Romantic Evenings Anymore, September/October, 16

ENVIRONMENT

*Cause and Control of Water Pollution** (March 1969), January/February, 31

*Conservation Can't Wait** (April 1947), January/February, 10

*DDT, 2,4-D VS. Wildlife** (July 1949), January/February, 10

*Earth Day's 20th Anniversary -- An Editorial** (April 1989), January/February, 60

Environmental Claims and the Smart Shopper, May, 12

*Fish and Insecticides** (July 1958), January/February, 21

*Iowa's Big Opportunity -- A Bottle Bill** (February 1977), January/February, 40

It's Not Easy Being Green, May, 8

*Leaking Underground Storage Tanks -- An Environmental Time Bomb**

(October 1986), January/February, 53

*Pollution Detectives** (July 1973), January/February, 36

EVANS, DAVID

*Iowa the Beautiful? or Ugly?** (May 1970), January/February, 35

*The Challenge We Face** (September 1970), January/February, 34

FARRIS, BILL

*Oak Wilt Aerial Survey** (May 1975), January/February, 36

FISHING

1992 Fishing Forecast, March, 3

Ask Bernie the Biologist, July/August, 52

*Bass by the Bagful** (August 1960), January/February, 25

Catfishin' -- A Respectable Sport, July/August, 26

Classroom Corner, June, 23; March, 23

Dear Diary, March, 28

*Death of a River from Channelization** (July 1974), January/February, 36

*First "Muskie" for West Okoboji** (October 1961), January/February, 25

*Fish and Insecticides** (July 1958), January/February, 21

*Grass Carp Update -- A Subject of Controversy** (September 1976),

January/February, 37

Hook, Line and School?, March, 22

How To Read a Contour Map, June, 12

Is a Trout Just a Trout?, March, 25

*It's More Than Just Their First Fishing Trip -- Molding Your Child's Future **

(March 1980), January/February, 48

*Iowa's Clam Industry May See War Boom For Buttons** (May 1942),

January/February, 6

Length Limits -- Facts and Fallacies, June, 16

Low-Cost Housing For Iowa Fish, July/August, 21

New State Record Flathead Catfish, July/August, 45

New Waves -- Fishing Lakes of the Future, April, 26

*Operation Catfish Crib** (December 1970), January/February, 35

*Return of the Brookies** (April 1979), January/February, 41

Still a Bargain, June, 25

*The Aquatic Education Program -- Fish Iowa!** (March 1990),

January/February, 61

The Missouri River, September/October, 25

*There's Nothing Really New** (July 1954), January/February, 19

*Women's Fishing Licenses** (July 1950), January/February, 14

FORESTS AND FORESTRY

*It's Official -- Iowa's First Arbor Day** (April 1960), January/February, 24

Iowa's Other State Forests, July/August, 60

Loess Hills State Forest, May, 30

Mastering Woodland Management, July/August, 12

*Oak Wilt Aerial Survey** (May 1975), January/February, 36

*Power Saws Come to Iowa ** (February 1946), January/February, 9

Shimek State Forest, June, 30

Stephens State Forest, March, 30

- Survey Confirms Sharp Increase in Home Woodburning** (January 1984), January/February, 51
- The Costly Results of Dutch Elm Disease** (January 1976), January/February, 39
- The "Cures" For Dutch Elm Disease** (July 1963), January/February, 28
- The Vanishing Woodland** (July 1964), January/February, 29
- This is 'Sugar Bush' Country** (March 1968), January/February, 30
- Timber Resource Disappearing in Iowa** (November 1978), January/February, 40
- Tree Farmer of the Year Rehabilitates Abused Farmland*, September/October, 44
- Yellow River Forest*, April, 30
- FUHLBRUGGE, WAYNE
- Shimek State Forest*, June, 30
- GABREY, STEVE
- Are Turkeys Gobbling Up Landonwers' Profits?*, September/October, 21
- GARDINER, ED
- Mushrooms!* (April 1979), January/February, 40
- GENGERKE, THOMAS W.
- 1992 Fishing Forecast -- Northwest*, March, 11
- GENT, RUSS
- Bits and Pieces*, March, 16
- GEOLOGY
- Fossil Plant Life at Kluon Lake*, July/August, 49
- Lithograph City*, June, 8
- The Geode -- Iowa's State Rock** (February 1968), January/February, 31
- The Geological Survey in Iowa -- 100 Years of Research and Service*, June, 20
- Unearthing Ancient Amphibians** (August 1987), January/February, 55
- GIGAR, BARBARA D.
- Classroom Corner*, March, 23; June, 23
- Hook, Line and School?*, March, 22
- The Aquatic Education Program -- Fish Iowa!* (March 1990), January/February, 61
- GLADFELTER, LEE
- Deer Harvest in 1970 is Tops** (August 1971), January/February, 34
- Update: Prairie Pothole Joint Venture*, April, 10
- GRAU, ROBERT
- Timber Resource Disappearing in Iowa** (November 1978), January/February, 40
- GREGORY, JIM
- Wardens' Tales -- Shop Talk From the Field** (August 1942), January/February, 42
- GUCCIARDO, LINDA
- Will Iowa's Wetlands be Lost to the Purple Tide?** (July 1984), January/February, 50
- HABITAT
- Asset or Liability? Benefits of Wetlands** (April 1991), January/February, 62
- Bits and Pieces*, March, 16
- Classroom Corner*, July/August, 47
- Converting Dollars to Habitat*, September/October, 9
- Gems of Blue*, April 3
- Green Island -- The Making of a Marsh*, July/August, 55
- King of a Marsh*, July/August, 55
- Update: Prairie Pothole Joint Venture*, April, 10
- Wetlands Net Iowa Farmer Conservationist of the Year Award*, April 3
- Will Iowa's Wetlands be Lost to the Purple Tide?** (July 1984), January/February, 50
- HANSEN, JAMES
- Canada Geese -- Management and Hunting in Iowa** (September 1983), January/February, 50
- Why Steel Shot in Iowa?** (August 1984), January/February, 50
- HARRISON, ROSS
- The REAP Act -- A Brighter Future for Iowa's Diverse Environment** (July 1989), January/February, 57
- HELMS, DON R.
- The Mississippi River -- A Dying Resource?** (May 1977), January/February, 39
- HERTEL, GENE
- This is 'Sugar Bush' Country** (March 1968), January/February, 30
- HILL, KAY R.
- Death of a River from Channelization** (July 1974), January/February, 36
- HOILIE, JERRY
- Warden's Diary -- Lending a Helping Hand?** (April 1987), January/February, 44
- HONEYWELL, ROBERT
- Yellow River Forest*, April, 30
- HOWELL, DARYL
- Living on the Edge*, April, 16
- Recovery 2000** (June 1990), January/February, 61
- HUDSON, JERRY
- Catfishin' -- A Respectable Sport*, July/August, 26
- HUMESTON, CHUCK
- Warden's Diary -- Excuse Olympics*, June, 19
- Warden's Diary -- Famous Last Words in Boating** (July 1990), January/February, 45
- Warden's Diary -- It Won't Be Easy*, May, 19
- Warden's Diary -- Six Steps Guaranteed to Ruin Your Sport*, September/October, 62
- Warden's Diary -- The Holiday's Over*, July/August, 62
- Warden's Diary -- The Rush Lake Relays*, March, 19
- HUNTING (See also WILDLIFE)
- 1991 Top 25 Turkeys*, April, 25
- 1992 Hunting Forecast*, September/October, 3
- 1992 Iowa Record Deer Racks*, September/October, 18
- All-Time Top 10 Racks*, September/October, 48
- Anti-Hunting -- A Wasteful Issue** (January 1976), January/February, 38
- Canada Geese -- Management and Hunting in Iowa** (September 1983), January/February, 50
- Deer Harvest in 1970 is Tops** (August 1971), January/February, 34
- Editorial** (October 1972), January/February, 35
- Fall Deer Seasons Set*, July/August, 44
- Fall Turkey Season Set*, July/August, 46
- Game Violations Pay \$24,000 In November** (January 1950), January/February, 14
- Iowa Trophy Deer Records*, September/October, 48
- Iowa's Little Known \$ Million Fur Industry** (November 1976), January/February, 39
- New Youth Deer Season*, July/August, 44
- Officers in the Air -- Aerial Surveillance Catches Nighttime Poachers** (December 1982), January/February, 50
- Portable Ice Box Saves Game in Hot Weather** (November 1951), January/February, 35
- Privacy Ends -- Foxes are "Bugged" by Biologists** (January 1971), January/February, 35
- Still a Bargain*, June, 25
- The 1953 Iowa Deer Season** (January 1954), January/February, 18
- The Red Fox -- A Controversial Character*, July/August, 24
- What Color Safest?** (July 1960), January/February, 24
- Where Goes the Iowa Duck?** (August 1963), January/February, 28
- Why Steel Shot in Iowa?** (August 1984), January/February, 50
- HUSTON, TAYLOR W.
- Game Farm to Continue in Spite of War** (March 1942), January/February, 6
- IOWA'S OUTDOOR COOKBOOK
- July/August, 40; September/October, 42
- JACKSON, LAURA SPESS
- Living on the Edge*, April, 16
- Wild Architects*, May, 3
- JOHNSON, MALCOLM K.
- Roughing It the Modern Way** (August 1961), January/February, 26
- JONES, M.L.
- The World's Oldest Robin** (July 1951), January/February, 14
- KALISHEK, BILL
- Is a Trout Just a Trout?*, March, 25
- KELLEY, STEPHEN
- The "Cures" For Dutch Elm Disease** (July 1963), January/February, 28
- KEMPERMAN, JERRY
- Mastering Woodland Management*, July/August, 12
- KING, DR. ROBERT L.
- Lakeside Laboratory Provides Setting for Flora, Fauna Study** (August 1942), January/February, 7
- KJOLHEDE, JULIE
- An Effort That Won't Go To Waste*, April, 12
- Environmental Claims and the Smart Shopper*, May, 12

- KNAPHUS, GEORGE
*Summer Mushrooms, Some are Not** (July 1991), January/February, 63
- KONRAD, MARTIN
New Waves -- Fishing Lakes of the Future, April, 26
- KOLCZAK, LARRY
*Leaking Underground Storage Tanks -- An Environmental Time Bomb** (October 1986), January/February, 53
*Superfund Cleanup Continues at Iowa's Aidex Site** (August 1986), January/February, 53
- KOZICKY, ED
*Anti-Hunting -- A Wasteful Issue** (January 1974), January/February, 38
- LANDON, DANIEL R.
*Clean Lakes for Iowans** (July 1981), January/February, 49
- LENZ, WARD
*Life, Liberty and the Pursuit of Mobility** (June 1991), January/February, 62
- LITTLE, TERRY
1992 Hunting Forecast, September/October, 3
Converting Dollars to Habitat, September/October, 9
- LOHMANN, PATRICIA J.
The Geological Survey in Iowa -- 100 Years of Research and Service, June, 20
- LONGWOOD, FRANK
*Power Saws Come to Iowa** (February 1946), January/February, 9
- MADSON, JOHN
Atomic Research Takes to the Woods, January/February, 19
*Making Champion Decoys** (January 1955), January/February, 19
*More on Iowa Mountain Lions ** (February 1957), January/February, 20
*New Lakes Have Big Opening** (June 1955), January/February, 20
*The 1953 Iowa Deer Season** (January 1954), January/February, 18
- MARTIN, RANDY
*More For Your Money** (July 1991), January/February, 61
They're Not Just For Romantic Evenings Anymore, September/October, 16
- MAYHEW, JIM
*Fish and Insecticides** (July 1958), January/February, 21
*Grass Carp Update -- A Subject of Controversy** (September 1976), January/February, 37
Length Limits -- Facts and Fallacies, June, 16
- MOE, MEL
*They're Back** (June 1990), January/February, 60
- MOELLER, DAVID L.
1992 Fishing Forecast -- Northeast, March, 3
- MULLEN, BOB
*It's More Than Just Their First Fishing Trip -- Molding Your Child's Future** (March 1980), January/February, 48
- MUSGROVE, JACK
*Mystery and Beauty -- Spring Goose Flight** (March 1962), January/February, 25
- MUSHROOMS
Mushrooms! (April 1979), January/February, 40
*Summer Mushrooms, Some are Not** (July 1991), January/February, 63
- NATIONS, BRENDA K.
Fossil Plant Life at Klum Lake, July/August, 49
Pesticides In Iowa Precipitation, July/August, 42
- NEAL, THOMAS J.
*Death of a Fencerow** (June 1975), January/February, 37
- NOEL, DALE
*Iowa Campers View the Park User Fee** (March 1974), January/February, 36
- OLSON, BRENT
Loess Hills State Forest, May, 30
- PARKS (See also PRAIRIES AND PRESERVES)
*A Message on Brushy Creek** (June 1978), January/February, 41
BYOBag, May, 28
Carry-In-Carry-Out Trash Program In Picnic Areas of Parks, April, 20
*Cedar Rock Popular Attraction** (January 1983), January/February, 51
Classroom Corner, May, 23
Have You Heard ... ?, May, 16
*New Lakes Have Big Openings** (June 1955), January/February, 20
Pikes Peak State Park, September/October, 58
*Roughing It the Modern Way** (August 1961), January/February, 26
*The Compromise** (January 1989), January/February, 57
*The Park User Fee -- A Second Chance for Iowa's Recreational Areas** (February 1985), January/February, 51
We're Having Summer Fun Now!, July/August, 30
- PAVLICEK, TAMMRA K.
Iowa's Outdoor Cookbook, July/August, 40, September/October, 42
It's Not Easy Being Green, May, 8
- PEARSON, JOHN
Sheeder Prairie -- A "People Pasture," September/October, 55
- PETERSEN, VERNE H.
*There Will Be Boating 'Spite of Rationing** (March 1943), January/February, 7
- PIERCE, EVERETT
*Cause and Control of Water Pollution** (March 1969), January/February, 31
- PINNEKE, ROBERT R.
*The Praeri Rail Trail -- Seventeen Kilometers (10.5 miles) of Fortuitous Undertaking** (May 1980), January/February, 48
- PLUM, BRUCE
*The Vanishing Woodland** (July 1964), January/February, 29
- PORATH, WAYNE R.
*Ruffed Grouse 'Drumming' -- Curious Calling Card** (April 1968), January/February, 30
- PRAIRIES AND PRESERVES (See also PARKS)
*Lakeside Laboratory Provides Setting for Flora, Fauna Study** (August 1942), January/February, 7
Sheeder Prairie -- A "People Pasture," September/October, 55
*The Praeri Rail Trail -- Seventeen Kilometers (10.5 miles) of Fortuitous Undertaking** (May 1980), January/February, 48
- PRESTEMON, DEAN R.
Mastering Woodland Management, July/August, 12
- PRIEWERT, FRED
*A Message on Brushy Creek** (June 1978), January/February, 41
*Iowa's Big Opportunity -- A Bottle Bill** (February 1977), January/February, 40
- PRIEWERT, FRED A.
*Editorial** (October 1972), January/February 1992, 35
- RECREATION
Free Tot Life Preserver Loan Program, July/August, 46
The Missouri River, September/October, 25
*There Will Be Boating 'Spite of Rationing** (March 1943), January/February, 7
Where Can I Ride My ATV?, March, 20
- REECE, MAYNARD F.
*Notes From an Artist's Sketch Book** (June 1944), January/February, 8
- RESOURCE ENHANCEMENT AND PROTECTION ACT
REAP and Three Additional DNR Programs Receive National Renew America Awards, September/October, 45
*The REAP Act -- A Brighter Future for Iowa's Diverse Environment** (July 1989), January/February, 57
- ROSE, EARL T.
*Iowa's Clam Industry May See War Boom For Buttons** (May 1942), January/February 6
- RYE, BOB
Classroom Corner, April, 23; July/August, 47
- SATRE, SONNY
*Monitoring Deer Movements** (April 1971), January/February, 34
*Operation Catfish Crib** (December 1970), January/February, 35
- SCHEFFLER, JIM
Have You Heard ... ?, May, 16
*Land for the Future** (February 1974), January/February, 36
- SCHONHOFF, BERNIE
Ask Bernie the Biologist, July/August, 52
- SCHWARTZ, JOE
1992 Fishing Forecast -- Southwest, March, 9
- SHEETS, ROBERT G.
Green Island -- The Making of a Marsh, July/August, 55
- SIEVERS, DON
Classroom Corner, May, 23; September/October, 49
- SJOSTROM, RAE
*Wardens' Tales -- Shop Talk From the Field** (August 1942), January/February, 42
- SKOG, KENNETH E.
*Survey Confirms Sharp Increase in Home Woodburning** (January 1984), January/February, 51

SLEEPER, PAUL

Low-Cost Housing For Iowa Fish, July/August, 21

SPARKS, JULIE

Editorial, June, 3

Iowa's Outdoor Cookbook, July/August, 40, September/October, 42

SPARKS, ROGER

*Pollution Detectives** (July 1973), January/February, 36

*The Costly Results of Dutch Elm Disease** (January 1976),
January/February, 39

STANGL, KATHRYN A.

BYOBag, May, 28

Conservation Update, July/August, 42; September/October, 44

STILES, BRUCE F.

*Why the State Fair Fish and Game Exhibit** (August 1946),
January/February, 9

STOKES, JOHN

*Inflation and the Energy Crisis Hits State Areas** (April 1974),
January/February, 37

STUFFLEBEAM, DALE

*Bass by the Bagful** (August 1960), January/February, 25

SWIFT, ERNEST

*Where Did the Wilderness Go?** (February 1966), January/February, 29

TAHTINEN, SHARON T.

*Life, Liberty and the Pursuit of Mobility** (June 1991),
January/February, 62

TELLIER, L.F.

*Rare Floating Bogs Found in Iowa's Rice Lake** (January 1943),
January/February, 6

TIFFANY, LOIS H.

*Summer Mushrooms, Some are Not** (July 1991), January/February, 63

TORMEY, BRIAN J.

Home-Grown Markets -- Buying Recycled in Iowa, September/October, 14
When Everything Old Is New Again, September/October, 12

TOVEY, GEORGE E.

*Iowa--A Quarter Century From Now** (July 1959), January/February, 21

WILSON, PAUL

Are Turkeys Gobbling Up Landowners' Profits?, September/October, 21

WAHL, JIM

Dear Diary, March, 28

How To Read a Contour Map, June, 12

WARDEN'S DIARY

July/August, 62; June, 19; March, 19; May, 19; September/October, 62

WASHBURN, LOWELL

*Asset or Liability? Benefits of Wetlands** (April 1991), January/February, 62
Gems of Blue, April 3

*North American Waterfowl Management Plan -- A Strategy for Cooperation**
(August 1987), January/February, 56

Peregrine Falcon -- Man On A Mission, July/August, 32

*Swan Song** (April 1987), January/February, 54

*The Day the River Died** (May 1987), January/February, 54

*The Park User Fee -- A Second Chance for Iowa's Recreational Areas**
(February 1985), January/February, 51

The Solution Begins at Home, July/August, 4

Wetlands Net Iowa Farmer Conservationist of the Year Award, April, 8

WASTE

A Slick Solution, July/August, 18

An Effort That Won't Go To Waste, April 10

BYOBag, May, 28

Classroom Corner, May, 23

Environmental Claims and the Smart Shopper, May, 12

Environmental Claims and the Smart Shopper, May, 12

Home-Grown Markets -- Buying Recycling in Iowa, September/October, 14

"Iowa Needs A Cleaner Planet" Campaign Honored, June, 21

New Toll-Free Number Answers Questions on Waste, June, 22

*Superfund Cleanup Continues at Iowa's Aidex Site** (August 1986),
January/February, 53

*The Day the River Died** (May 1987), January/February, 54

The Solution Begins at Home, July/August, 4

Toxic Cleanup Days, September/October, 47

When Everything Old Is New Again, September/October, 12

WATER QUALITY

Banking on Quality Streams, September/October, 51

Bits and Pieces, March, 16

Endangered Groundwater? New Strategies for Protecting Iowa's

*Underground Water Supplies** (August 1987), January/February, 55

*Getting to the Point** (May 1991), January/February, 63

Is a Trout Just a Trout?, March, 25

New Video Proves Cooperation Is A Big Deal In Northeast Iowa, May, 22

Pesticides In Iowa Precipitation, July/August, 42

Plugging the Problem, March, 14

Raindrops Keep Falling . . ., June, 4

*The Big Spring Project** (November 1988), January/February, 56

The Missouri River, September/October, 25

WATERFOWL

*Asset of Liability? Benefits of Wetlands** (April 1991),
January/February, 62

Classroom Corner, April, 23

Gems of Blue, April, 3

*Where Goes the Duck?** (August 1963), January/February, 28

*Canada Geese -- Management and Hunting in Iowa** (September 1983),
January/February, 50

North American Waterfowl Management Plan -- A Strategy for
*Cooperation** (August 1987), January/February, 56

The Missouri River, September/October, 25

*The Point System Adds Up -- to Wise Duck Management** (September 1970),
January/February, 34

Wetlands Net Iowa Farmer Conservationist of the Year Award, April 8

WATERS, STEPHEN J.

1992 Fishing Forecast -- Southeast, March, 6

WILDLIFE (See also HUNTING)

*65 New Birds on U.S. Protected List** (July 1950), January/February, 15

Are Turkeys Gobbling Up Landowners' Profits?, September/October, 21

Classroom Corner, September/October, 49

*Curious Calling Card** (April 1968), January/February, 30

*Deer Dangerous to Traffic** (October 1951), January/February, 14

Fall Turkey Season Set, July/August, 46

*Game Farm Program to Continue in Spite of War** (March 1942),
January/February, 6

*Heavy Storm Loss to Pheasants** (March 1947), January/February, 11

Living on the Edge, April, 16

*Monitoring Deer Movements** (April 1971), January/February, 34

*New Program Will Boost Wildlife** (September 1986), January/February, 52

Peregrine Falcon -- Man On A Mission, July/August, 32

Rare Sandhill Crane Sighted in Iowa, July/August, 43

*Recovery 2000** (June 1990), January/February, 61

*Ruffed Grouse 'Drumming' -- Curious Calling Card** (April 1968),
January/February, 7

*Swan Song** (April 1987), January/February, 54

The Missouri River, September/October, 25

*The World's Oldest Robin** (July 1951), January/February, 14

*They're Back** (June 1990), January/February, 60

Wild Architects, May, 3

WILKINSON, JOE

Plugging the Problem, March, 14

*The Big Spring Project** (November 1988), January/February, 56

WILSON, LARRY J.

*A Message from the Director of the Iowa Conservation Commission**
(September 1981), January/February, 49

*Earth Day's 20th Anniversary -- An Editorial** (April 1989),
January/February, 60

*Editorial -- The New DNR** (August 1986), January/February, 52

WORLEY, GEORGE W.

*Conservation School for Teachers** (March 1950), January/February, 16

ZOHRER, JAMES

*Instant Wildlife Habitat** (November 1975), January/February, 39

Where Can I Ride My ATV?, March, 20

*This article was printed previously (indicated by the month and year of issue in parentheses). It was reprinted in the January/February 1992 issue -- our "Special 50th Anniversary" issue.

Help Rebuild Our Forest Resource

To order by phone call 515/233-1161

**DNR 1993
ORDER FORM**

Twenty percent down for orders more than \$500

1. Fill in the number-wanted column.

PLANTS AVAILABLE

Wildlife and songbird packets can be ordered separately.

Packet	Cost/Packet	Code	Number of Packets
--------	-------------	------	----------------------

Wildlife	Contains 200 plants	\$35.00	96
Songbird	Contains 20 plants	\$15.00	95

Height	Cost/Hundred	Code	Number of Plants
--------	--------------	------	---------------------

(Do not order less than 500 plants and order in units of 100)

White Pine	8-14"	\$ 13.00	30
Scotch Pine	8-14"	13.00	20
Red Pine	8-14"	13.00	17
Ponderosa Pine	6-12"	13.00	15
Jack Pine	8-14"	13.00	10
Red Cedar	6-14"	13.00	16
Norway Spruce	8-14"	13.00	13
White Spruce	8-14"	13.00	43
Black Walnut	10-18"	20.00	24
Green Ash	8-18"	20.00	08
White Ash	8-18"	20.00	28
Red Oak	8-14"	20.00	41
Bur Oak	6-14"	20.00	04
White Oak	6-14"	20.00	29
Mixed Oak	6-14"	20.00	51
Cottonwood	8"	20.00	83
Hybrid Poplar (rooted cutting)	8"	20.00	53
Russian Olive	8-16"	20.00	19
Autumn Olive (Cardinal strain)	6-14"	20.00	03
Amur Honeysuckle	8-16"	20.00	01
Redosier Dogwood	8-18"	20.00	18
Gray Dogwood	6-12"	20.00	07
Common Lilac	6-12"	20.00	47
Chokecherry	8-16"	20.00	39
Osage Orange	8-18"	20.00	14
Ninebark	6-14"	20.00	12
Siberian Crab	6-12"	20.00	46
Nanking Cherry	8-16"	20.00	79
Highbush Cranberry	6-12"	20.00	80
Serviceberry	8-18"	20.00	78

To order by phone call 515/233-1161
To FAX your order call 515/233-1131

2. Address (Please Print)

(Landowner Name - Please Print)

(Mailing Address)

(City) (State) (Zip)

(Area Code) (Phone Number)

3. Check One Box

- ☐ I will pick up my order at the Nursery when notified.
- ☐ Delivery to a drop-off point by refrigerated state truck. List county where seedlings are to be delivered.

County

4. Please Answer Each Question

1. These trees are to be planted in

County.

2. Did you purchase plants from the Nursery last year?

☐ Yes ☐ No

The *Iowa Conservationist*, the DNR's official magazine, is published bi-monthly. Written for the outdoor enthusiast, it is packed with articles and illustrations on forestry, fishing, hunting, camping, boating and natural resource issues.

Subscribe now to the
***Iowa
Conservationist***
magazine.

Yes, please bill me later for:

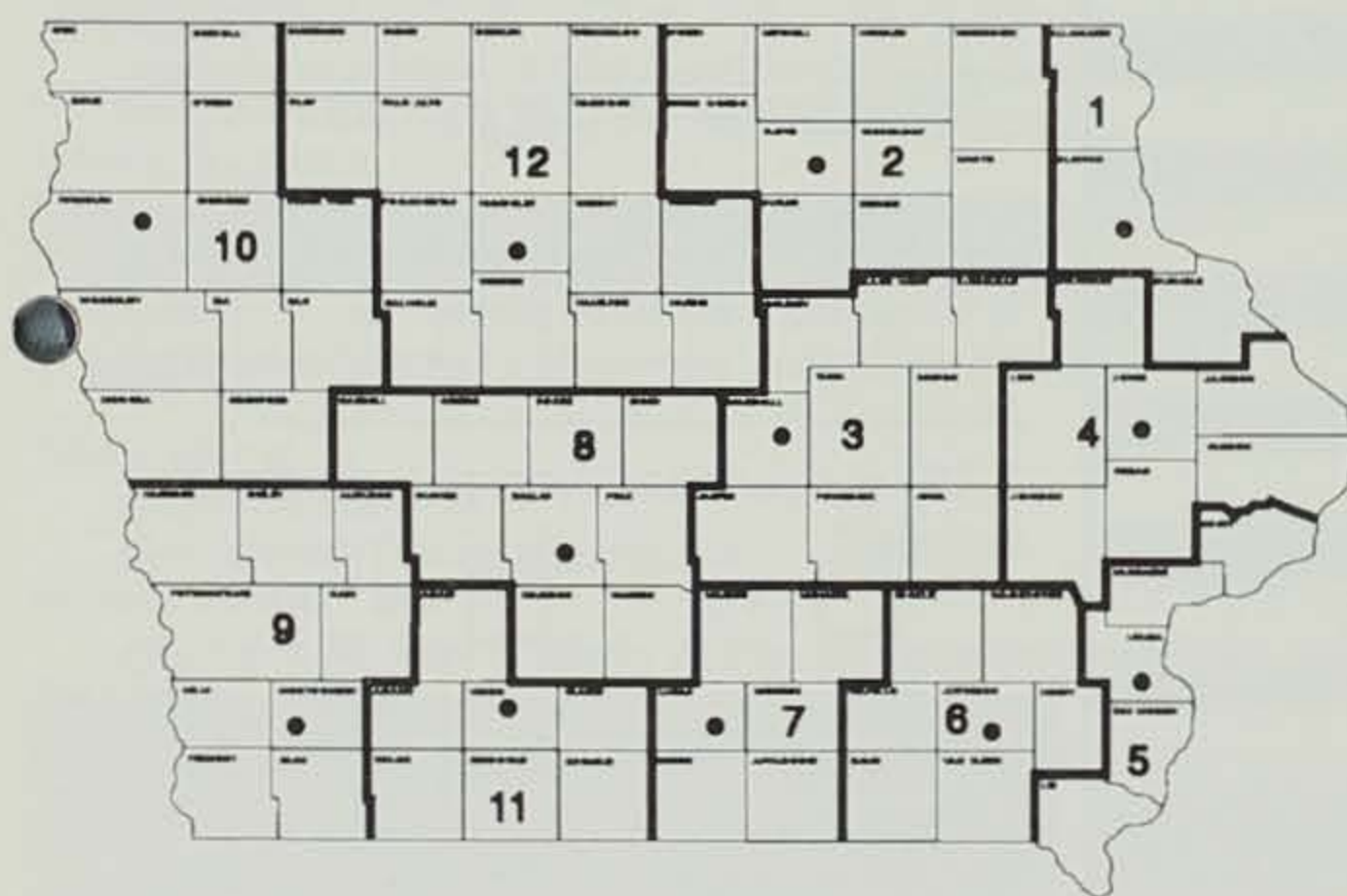
☐ 1 year \$6 * ☐ New ☐ Renewal

* This price is only good until Dec. 31, 1992. After that, new rates are \$9.97 for one year, \$14.97 for two years and \$19.97 for three years.

To Help You Order

- Phone Orders** For your convenience use our phone order system to order your plants. Just call the State Forest Nursery at 515/233-1161 to place your order. To FAX your order call 515/233-1131.
- Mail Orders** To mail, send your order to State Forest Nursery, 2404 S. Duff, Ames, IA 50010.
- Payment** For orders more than \$500, the nursery will bill you for 20 percent of the cost with the remainder to be paid by March 1, 1993. **DO NOT** send money with your order.
- Spring Delivery** Spring orders are usually sent out during the month of April. Plants will be shipped via a state refrigerated truck to a drop-off point in each county.
- Claims** Claims for any cause must be made within 10 days after receipt of plants. We give no warranty, expressed or implied, as to the productiveness or life of the material, and will not be in any way responsible for results or economic losses incurred or claimed by the customer.
- Restrictions** The nursery stock must be planted and used for establishing or improving existing forest, erosion control, game or water conservation. These restrictions apply: These plants cannot be resold or given away with roots attached, to any person, firm, corporation or agency or planted for new windbreak, shade or ornamental purposes. All plantings must be protected from fire and domestic livestock grazing. All trees planted or used in violation of the above restrictions are subject to forfeit for destruction.
- Refunds** No refunds after March 1.

FORESTRY DISTRICTS



District Forester Addresses

1. Elkader Box 662, 52043 (319) 245-1891
2. Charles City Box 4, 50616 (515) 228-6611
3. Marshalltown Box 681, 50158 (515) 752-3352
4. Anamosa Box 46, 52205 (319) 462-2768
5. Wapello 515 Townsend Ave., 52653 (319) 523-8319
6. Fairfield Box 568, 52556 (515) 472-2370
7. Chariton Box 310, Route 2, 50049 (515) 774-8733
8. Adel 110 So. 8th, 50003 (515) 993-4133
9. Red Oak Box 152, 51566 (712) 623-4252
10. Le Mars 1100A 12th St., S.W., 51031 (712) 546-5161
11. Creston 500 E. Taylor, 50801 (515) 782-6761
12. Humboldt 102 8th St., S., 50548 (515) 332-2761
- State Forest Nursery (515) 233-1161

Suggested Spacing

Species	Reforestation	Wildlife	Erosion Control
Pines and other conifers	8' x 6' (908 plants/acre) for timber 6 x 6 (1,220 plants/acre) for Christmas Trees	same (High density makes good cover)	same
Walnut and other hardwoods	8' x 8' (681/acre) to 12' x 12' (302 /acre)	8' x 8' (681/acre) to 16' x 16' (170/acre)	8' x 8' to 12' x 12'
Russian Olive		6' x 6' (1,210/acre) to 12' x 12'	same
Autumn Olive and other shrubs		3' - 5' between plants within rows; 5' - 10' between rows; range from 2,900 plants/acre (3' x 5') to 871 (5' x 10'); or, plant in clumps 4' x 4' or 6' x 6'	



Printed on
Recycled Paper

SUNDAY MONDAY TUESDAY WEDNESDAY THURSDAY FRIDAY SATURDAY

JUNE
S M T W T F S
1 2 3 4 5
6 7 8 9 10 11 12
13 14 15 16 17 18 19
20 21 22 23 24 25 26
27 28 29 30

AUGUST
S M T W T F S
1 2 3 4 5 6 7
8 9 10 11 12 13 14
15 16 17 18 19 20 21
22 23 24 25 26 27 28
29 30 31

4

Independence Day

11

18

25

5

12

19

NEW MOON

26

6

13

20

27

7

14

21

28

1

8

15

22

29

2

9

16

23

30

3

FULL MOON

10

17

24

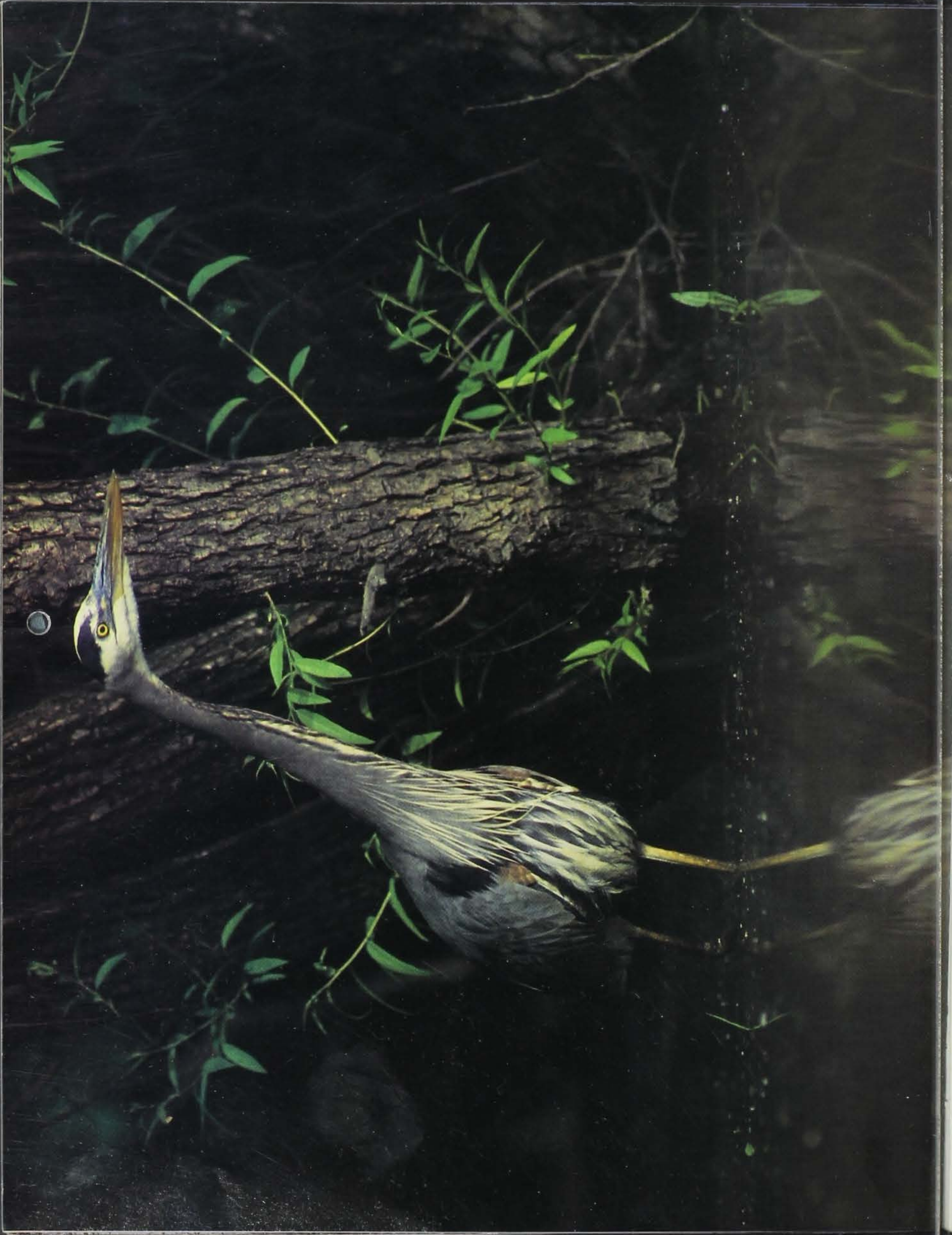
31

I suspect that the child plucks its first flower with an insight into its beauty and significance which the subsequent botanist never retains.
-- Henry David Thoreau



Black-eyed Susans.
Photo by Bruce A. Morrison.

Top photo: Prairie smoke. Photo by Ty Smedes.



SATURDAY

FRIDAY

THURSDAY

WEDNESDAY

TUESDAY

MONDAY

SUNDAY

August

SUNDAY

MONDAY

TUESDAY

WEDNESDAY

THURSDAY

FRIDAY

SATURDAY

1

2

FULL MOON

3

4

5

6

7

8

9

10

11

12

13

14

15

16

17

NEW MOON

18

19

20

21

22

23

24

25

26

27

28

29

30

31

JULY

S	M	T	W	T	F	S
			1	2	3	
4	5	6	7	8	9	10
11	12	13	14	15	16	17
18	19	20	21	22	23	24
25	26	27	28	29	30	31

SEPTEMBER

S	M	T	W	T	F	S
			1	2	3	4
5	6	7	8	9	10	11
12	13	14	15	16	17	18
19	20	21	22	23	24	25
26	27	28	29	30		

Wind in the east,
fish bite the least;
wind from the
west, fish bite best;
wind from the
north, fish come
forth; wind from
the south, blows
bait in the fish's
mouth.
-- An old English
rhyme



Bass fishing.
Photo by Lowell
Washburn.

Top photo: Great blue heron. Photo by Ty Smedes.



SUNDAY

MONDAY

TUESDAY

WEDNESDAY

THURSDAY

FRIDAY

SATURDAY

September

SUNDAY	MONDAY	TUESDAY	WEDNESDAY	THURSDAY	FRIDAY	SATURDAY																																																																																											
			1 FULL MOON	2	3	4																																																																																											
5	6 Labor Day	7	8	9	10	11																																																																																											
12	13	14	15	16 Rosh Hashana NEW MOON	17	18																																																																																											
19	20	21	22	23	24	25 Yom Kippur																																																																																											
26	27	28	29	30 FULL MOON	<div>AUGUST</div> <table> <tr><td>S</td><td>M</td><td>T</td><td>W</td><td>T</td><td>F</td><td>S</td></tr> <tr><td>1</td><td>2</td><td>3</td><td>4</td><td>5</td><td>6</td><td>7</td></tr> <tr><td>8</td><td>9</td><td>10</td><td>11</td><td>12</td><td>13</td><td>14</td></tr> <tr><td>15</td><td>16</td><td>17</td><td>18</td><td>19</td><td>20</td><td>21</td></tr> <tr><td>22</td><td>23</td><td>24</td><td>25</td><td>26</td><td>27</td><td>28</td></tr> <tr><td>29</td><td>30</td><td>31</td><td></td><td></td><td></td><td></td></tr> </table> <div>OCTOBER</div> <table> <tr><td>S</td><td>M</td><td>T</td><td>W</td><td>T</td><td>F</td><td>S</td></tr> <tr><td></td><td></td><td></td><td></td><td></td><td>1</td><td>2</td></tr> <tr><td>3</td><td>4</td><td>5</td><td>6</td><td>7</td><td>8</td><td>9</td></tr> <tr><td>10</td><td>11</td><td>12</td><td>13</td><td>14</td><td>15</td><td>16</td></tr> <tr><td>17</td><td>18</td><td>19</td><td>20</td><td>21</td><td>22</td><td>23</td></tr> <tr><td>24</td><td>25</td><td>26</td><td>27</td><td>28</td><td>29</td><td>30</td></tr> <tr><td>31</td><td></td><td></td><td></td><td></td><td></td><td></td></tr> </table>		S	M	T	W	T	F	S	1	2	3	4	5	6	7	8	9	10	11	12	13	14	15	16	17	18	19	20	21	22	23	24	25	26	27	28	29	30	31					S	M	T	W	T	F	S						1	2	3	4	5	6	7	8	9	10	11	12	13	14	15	16	17	18	19	20	21	22	23	24	25	26	27	28	29	30	31						
S	M	T	W	T	F	S																																																																																											
1	2	3	4	5	6	7																																																																																											
8	9	10	11	12	13	14																																																																																											
15	16	17	18	19	20	21																																																																																											
22	23	24	25	26	27	28																																																																																											
29	30	31																																																																																															
S	M	T	W	T	F	S																																																																																											
					1	2																																																																																											
3	4	5	6	7	8	9																																																																																											
10	11	12	13	14	15	16																																																																																											
17	18	19	20	21	22	23																																																																																											
24	25	26	27	28	29	30																																																																																											
31																																																																																																	

(Those) who want to further both the beauty and bounty of America must constantly search for the right balance between development and preservation of resources.
-- Stewart L. Udall, Secretary of the Interior



A hunter's partner.
Photo by Ron Johnson.

Top photo: Jemmerson Slough, Dickinson County. Photo by Bruce A. Morrison.



October

SUNDAY

MONDAY

TUESDAY

WEDNESDAY

THURSDAY

FRIDAY

SATURDAY

SEPTEMBER
S M T W T F S
1 2 3 4
5 6 7 8 9 10 11
12 13 14 15 16 17 18
19 20 21 22 23 24 25
26 27 28 29 30

NOVEMBER
S M T W T F S
1 2 3 4 5 6
7 8 9 10 11 12 13
14 15 16 17 18 19 20
21 22 23 24 25 26 27
28 29 30

Turn in Poachers.
Call 
1-800-532-2020.

1

2

Knowledge is in
the cities . . . but
wisdom is in the
woods.
-- Anonymous

3

4

5

6

7

8

9

10

11

Columbus Day
(Observed)

12

13

14

15

NEW MOON

16

17

18

19

20

21

22

23

24 / 31

Daylight Savings
Time ends
Halloween

25

26

27

28

29

30

FULL MOON



White-tailed deer.
Photo by Roger A.
Hill.

Top photo: Fall color. Photo by Ron Johnson.



November

SUNDAY

MONDAY

TUESDAY

WEDNESDAY

THURSDAY

FRIDAY

SATURDAY

Turn in Poachers.
Call 
1-800-532-2020.

1

2

3

4

5

6

Election Day

7

8

9

10

11

12

13

Veteran's Day

NEW MOON

14

15

16

17

18

19

20

21

22

23

24

25

26

27

Thanksgiving Day

28

29

30

FULL MOON

OCTOBER
S M T W T F S
1 2
3 4 5 6 7 8 9
10 11 12 13 14 15 16
17 18 19 20 21 22 23
24 25 26 27 28 29 30
31

DECEMBER
S M T W T F S
1 2 3 4
5 6 7 8 9 10 11
12 13 14 15 16 17 18
19 20 21 22 23 24 25
26 27 28 29 30 31

We live in an age of material things -- of techniques and processes, of goods and gadgets. It is easy to forget in such a world that we still live only because of the resources of the land.
-- Leonard Hall



Ring-necked pheasants. Photos by Roger A. Hill.



December

SUNDAY

MONDAY

TUESDAY

WEDNESDAY

THURSDAY

FRIDAY

SATURDAY

NOVEMBER
S M T W T F S
1 2 3 4 5 6
7 8 9 10 11 12 13
14 15 16 17 18 19 20
21 22 23 24 25 26 27
28 29 30

JANUARY
S M T W T F S
1
2 3 4 5 6 7 8
9 10 11 12 13 14 15
16 17 18 19 20 21 22
23 24 25 26 27 28 29
30 31

Turn in Poachers.
Call  of Iowa, Inc.
1-800-532-2020.

1

2

3

4

5

6

7

8

9

10

11

Hanukkah

12

13

NEW MOON

14

15

16

17

18

19

20

21

22

23

24

25

Christmas Day

26

27

28

FULL MOON

29

30

31

I am amazed at the harmony of natural law, which reveals an intelligence of such superiority that compared with it, all the systematic thinking and action of human beings is an utterly insignificant reflection.
-- Albert Einstein



Bluegill on ice.
Photo by Roger Sparks.

Top photo: Winter trout fishing. Photo by Ron Johnson.



Iowa CONSERVATIONIST

NOVEMBER/DECEMBER 1992, VOL. 51, 1

STAFF

Ross Harrison
Julie Sparks
Tammra K. Pavlicek
Kathryn Stangl
Lowell Washburn
Larry Pool
Ken Formanek

NATURAL RESOURCE COMMISSION

Barbara Nelson, Chairperson
Marian Kieffer, Vice-Chairperson
Mark Doll, Secretary
Richard Garrels
(Mrs.) Marion J. Patterson
Douglas R. Smalley
Richard C. Young

ENVIRONMENTAL PROTECTION COMMISSION

Richard Hartsuck, Chairperson
Clark A. Yeager, Vice-Chairperson
Nancy Lee A. Siebenmann, Secretary
Verlon Britt
William Ehm
Rozanne King
Charlotte Mohr
Margaret M. Pahl
Gary C. Priebe

DIRECTOR

Larry J. Wilson

DEPUTY DIRECTOR

Don Paulin

DIVISION ADMINISTRATORS

Stan Kuhn
Larry Bean Energy
Allan Stokes
Allen Farris
William Farris Forests and Forestry
Michael Carrier Parks, Recreation and Preserves
Teresa D. Hay Waste Management Assistance

SPECIAL PHONE NUMBERS

DNR Central Office (515) 281-5145
Emergency Spill Response (515) 281-8694
Telecommunications Device for the Deaf (515) 242-5967
Turn-In-Poachers (TIP) (800) 532-2020
Waste Reduction and Recycling (800) 367-1025

Subscription rates for the *Iowa Conservationist*: \$9.97 for one year, \$14.97 for two years or \$19.97 for three years, effective January 1, 1993. Send subscription requests to *Iowa Conservationist*, Department of Natural Resources, Wallace State Office Building, Des Moines, Iowa 50319-0034.

Under Title VI of the 1964 Civil Rights Act, Section 504 of the Rehabilitation Act of 1973, the Age Discrimination Act of 1975 and Title IX of the Education Amendments of 1972, federal regulations prohibit discrimination on the basis of race, color, national origin, handicap. If you believe that you have been discriminated against in any program, activity, or facility as described above, or if you desire further information, please write to: Director, Iowa Department of Natural Resources, Wallace State Office Building, 900 E. Grand Ave., Des Moines, Iowa 50319-0034 or the Equal Employment Opportunity Commission, Washington, D.C. 20240.

Before sealing envelope, be sure to enclose holiday gift order form along with your remittance.

A variety of publications on energy conservation, environmental protection, geology, outdoor recreation and waste management are available by contacting the Department of Natural Resources. Quantities may be limited on some publications.

Top photo: Fall sumac. Photo by Ken Formanek.



NO POSTAGE
NECESSARY
IF MAILED
IN THE
UNITED STATES

BUSINESS REPLY MAIL

FIRST CLASS

PERMIT NO. 781

DES MOINES, IOWA

POSTAGE WILL BE PAID BY ADDRESSEE

Iowa CONSERVATIONIST
IOWA DEPARTMENT OF NATURAL RESOURCES
WALLACE STATE OFFICE BUILDING
502 EAST 9TH
DES MOINES, IOWA 50319-9968



Iowa CONSERVATIONIST

NOVEMBER/DECEMBER 1992, VOL. 51, NO. 8

STAFF

Ross Harrison	Bureau Chief
Julie Sparks	Editor
Tammra K. Pavlicek	Managing Editor
Kathryn Stangl	Assistant Editor
Lowell Washburn	Writer/Photographer
Larry Pool	Graphic Artist
Ken Formanek	Photographer

NATURAL RESOURCE COMMISSION

Barbara Nelson, Chairperson	Ruthven
Marian Kieffer, Vice-Chairperson	Bellevue
Mark Doll, Secretary	Council Bluffs
Richard Garrels	Mount Pleasant
(Mrs.) Marion J. Patterson	Cedar Rapids
Douglas R. Smalley	Des Moines
Richard C. Young	Waterloo

ENVIRONMENTAL PROTECTION COMMISSION

Richard Hartsuck, Chairperson	Des Moines
Clark A. Yeager, Vice-Chairperson	Ottumwa
Nancy Lee A. Siebenmann, Secretary	Cedar Rapids
Verlon Britt	Elgin
William Ehm	Creston
Rozanne King	Mondamin
Charlotte Mohr	Eldridge
Margaret M. Pahl	Sioux City
Gary C. Priebe	Algona

DIRECTOR

Larry J. Wilson

DEPUTY DIRECTOR

Don Paulin

DIVISION ADMINISTRATORS

Stan Kuhn	Administrative Services
Larry Bean	Energy and Geological Resources
Allan Stokes	Environmental Protection
Allen Farris	Fish and Wildlife
William Farris	Forests and Forestry
Michael Carrier	Parks, Recreation and Preserves
Teresa D. Hay	Waste Management Assistance

SPECIAL PHONE NUMBERS

DNR Central Office	(515) 281-5145
Emergency Spill Response	(515) 281-8694
Telecommunications Device for the Deaf	(515) 242-5967
Turn-In-Poachers (TIP)	(800) 532-2020
Waste Reduction and Recycling	(800) 367-1025

Subscription rates for the *Iowa Conservationist*: \$9.97 for one year, \$14.97 for two years or \$19.97 for three years, effective January 1, 1993. Send subscription requests to *Iowa Conservationist*, Department of Natural Resources, Wallace State Office Building, Des Moines, Iowa 50319-0034.

Under Title VI of the 1964 Civil Rights Act, Section 504 of the Rehabilitation Act of 1973, the Age Discrimination Act of 1975 and Title IX of the Education Amendments of 1972, federal regulations prohibit discrimination on the basis of race, color, national origin, handicap. If you believe that you have been discriminated against in any program, activity, or facility as described above, or if you desire further information, please write to: Director, Iowa Department of Natural Resources, Wallace State Office Building, 900 E. Grand Ave., Des Moines, Iowa 50319-0034 or the Equal Employment Opportunity Commission, Washington, D.C. 20240.

1994 CALENDAR

JANUARY							FEBRUARY							MARCH							APRIL						
S	M	T	W	T	F	S	S	M	T	W	T	F	S	S	M	T	W	T	F	S	S	M	T	W	T	F	S
						1			1	2	3	4	5			1	2	3	4	5							
2	3	4	5	6	7	8	6	7	8	9	10	11	12	6	7	8	9	10	11	12	3	4	5	6	7	8	9
9	10	11	12	13	14	15	13	14	15	16	17	18	19	13	14	15	16	17	18	19	10	11	12	13	14	15	16
16	17	18	19	20	21	22	20	21	22	23	24	25	26	20	21	22	23	24	25	26	17	18	19	20	21	22	23
23	24	25	26	27	28	29	27	28						27	28	29	30	31			24	25	26	27	28	29	30
30	31																										

MAY							JUNE							JULY							AUGUST						
S	M	T	W	T	F	S	S	M	T	W	T	F	S	S	M	T	W	T	F	S	S	M	T	W	T	F	S
1	2	3	4	5	6	7				1	2	3	4						1	2		1	2	3	4	5	6
8	9	10	11	12	13	14	5	6	7	8	9	10	11	3	4	5	6	7	8	9	7	8	9	10	11	12	13
15	16	17	18	19	20	21	12	13	14	15	16	17	18	10	11	12	13	14	15	16	14	15	16	17	18	19	20
22	23	24	25	26	27	28	19	20	21	22	23	24	25	17	18	19	20	21	22	23	21	22	23	24	25	26	27
29	30	31					26	27	28	29	30			24	25	26	27	28	29	30	28	29	30	31			
														31													

SEPTEMBER							OCTOBER							NOVEMBER							DECEMBER						
S	M	T	W	T	F	S	S	M	T	W	T	F	S	S	M	T	W	T	F	S	S	M	T	W	T	F	S
					1	2							1			1	2	3	4	5							
4	5	6	7	8	9	10	2	3	4	5	6	7	8	6	7	8	9	10	11	12	4	5	6	7	8	9	10
11	12	13	14	15	16	17	9	10	11	12	13	14	15	13	14	15	16	17	18	19	11	12	13	14	15	16	17
18	19	20	21	22	23	24	16	17	18	19	20	21	22	20	21	22	23	24	25	26	18	19	20	21	22	23	24
25	26	27	28	29	30		23	24	25	26	27	28	29	27	28	29	30				25	26	27	28	29	30	31
							30	31																			

A variety of publications on energy conservation, environmental protection, geology, outdoor recreation and waste management are available by contacting the Department of Natural Resources. Quantities may be limited on some publications.

Top photo: Fall sumac. Photo by Ken Formanek.



JANUARY



FEBRUARY



MARCH



APRIL



MAY



JUNE



JULY



AUGUST



SEPTEMBER



OCTOBER



NOVEMBER



DECEMBER

Iowa Department of
Natural Resources
Wallace State Office Building
900 E. Grand Ave.
Des Moines, Iowa 50319-0034

BULK RATE
U.S. POSTAGE
PAID
DES MOINES, IA
PERMIT NO. 1195