



ern Sumac

specimens
southwest
va border.
provide a
e autumn
n used in
fruits of
to prepare
fruits are
d in warm
The fruits
fe.
in the fall
e brilliant
w contin-



lowa
CONSERVATIONIST
DECEMBER 1985
SPECIAL ISSUE • 1986 CALENDAR • \$2



JANUARY 1986

SUNDAY

MONDAY

TUESDAY

WEDNESDAY

THURSDAY

FRIDAY

SATURDAY

In dramatic contrast with the busy season, winter brings a quiet beauty to Iowa's state parks. Most of the visitation to these areas occurs during warmer months. However, many Iowans enjoy the stark scenery along roads, lakes and back-woods trails as snowmobiling, ice fishing and cross-country skiing become increasingly popular. Photo by Ron Johnson.

NEW YEARS DAY

5

6

7

8

9

10

11

12

13

14

15

16

17

18

19

MARTIN LUTHER KING JR'S.
BIRTHDAY

20

21

22

23

24

25

26

27

28

29

30

31



FEBRUARY 1986

SUNDAY

MONDAY

TUESDAY

WEDNESDAY

THURSDAY

FRIDAY

SATURDAY

In February, snow geese begin congregating on the Missouri River bottoms in western Iowa, enroute to arctic breeding grounds. The spectacular migration of ducks and geese is a tradition enjoyed by thousands of Iowans. Wildlife research and sound management continue to brighten the future of waterfowl and many other wildlife species. Photo by Ken Formanek.

1

2

3

4

5

6

7

8

9

10

11

12

LINCOLN'S BIRTHDAY

13

VALENTINE'S DAY

14

15

16

17
WASHINGTON'S BIRTHDAY
(OBSERVED)

18

19

20

21

22

23

24

25

26

27

28



MARCH 1986

SUNDAY

MONDAY

TUESDAY

WEDNESDAY

THURSDAY

FRIDAY

SATURDAY

Arriving in March, the great blue heron is just one of Iowa's 400 nongame species. Management of these species is made possible through contributions to the Chickadee Checkoff on state income tax forms. The Nongame Program monitors the status and distribution of Iowa's reptiles, amphibians, songbirds and small mammals. The program also aims to restore barn owls and otters to the state and creates special events such as pelican watches, bald eagle days and workshops to help Iowans learn more about the wildlife around them. Photo by Cathy Meddin.

1

2

3

4

5

6

7

8

9

10

11

12

13

14

15

16

ST. PATRICK'S DAY

17

18

19

20

21

22

23

24

25

26

27

28

29

30

31



APRIL 1986

SUNDAY	MONDAY	TUESDAY	WEDNESDAY	THURSDAY	FRIDAY	SATURDAY
		1	2	3	4	5
6	7	8	9	10	11	12
13	14	15	16	17	18	19
20	21	22	23	23	25	26
27	28	29	30	<p>Iowa's woodlands offer relief from the vast farmland topography. Early settlers looked to the timber for refuge from the plains' harsh environment. Today's forest explorer finds solitude in bird watching, mushroom hunting or identifying woodland wildflowers. Three state-owned forests — Shimek, Stephens and Yellow River — offer woodland aesthetics and recreational opportunities. Soon a fourth tract in western Iowa's loess hills will be added. Photo by Cathy Meddin.</p>		



MAY 1986

SUNDAY

MONDAY

TUESDAY

WEDNESDAY

THURSDAY

FRIDAY

SATURDAY

A trout angler gets his money's worth in scenery and often fish, along Waterloo Creek near Dorchester in Allamakee County. Iowa's trout program involves trout hatching and rearing, intensive stocking, land acquisition and stream improvement in northeast Iowa. Like other fisheries programs, it is funded by stamp and license revenue and a federal excise tax on fishing equipment. Photo by Ron Johnson.

4

5

6

7

8

9

10

11

12

13

14

15

16

17

MOTHERS DAY

18

19

20

21

22

23

24

25

26

27

28

29

30

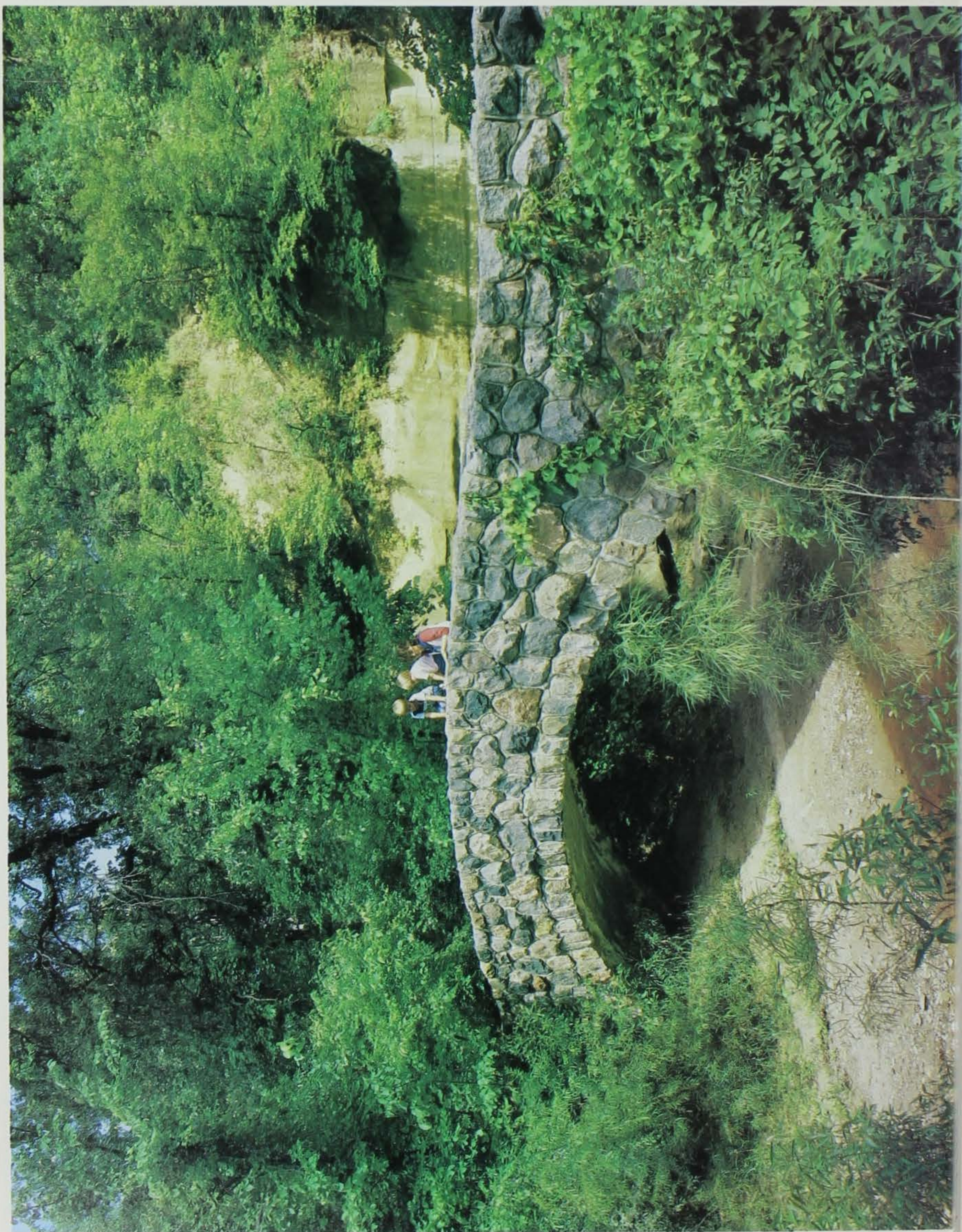
31

MEMORIAL DAY
(OBSERVED)



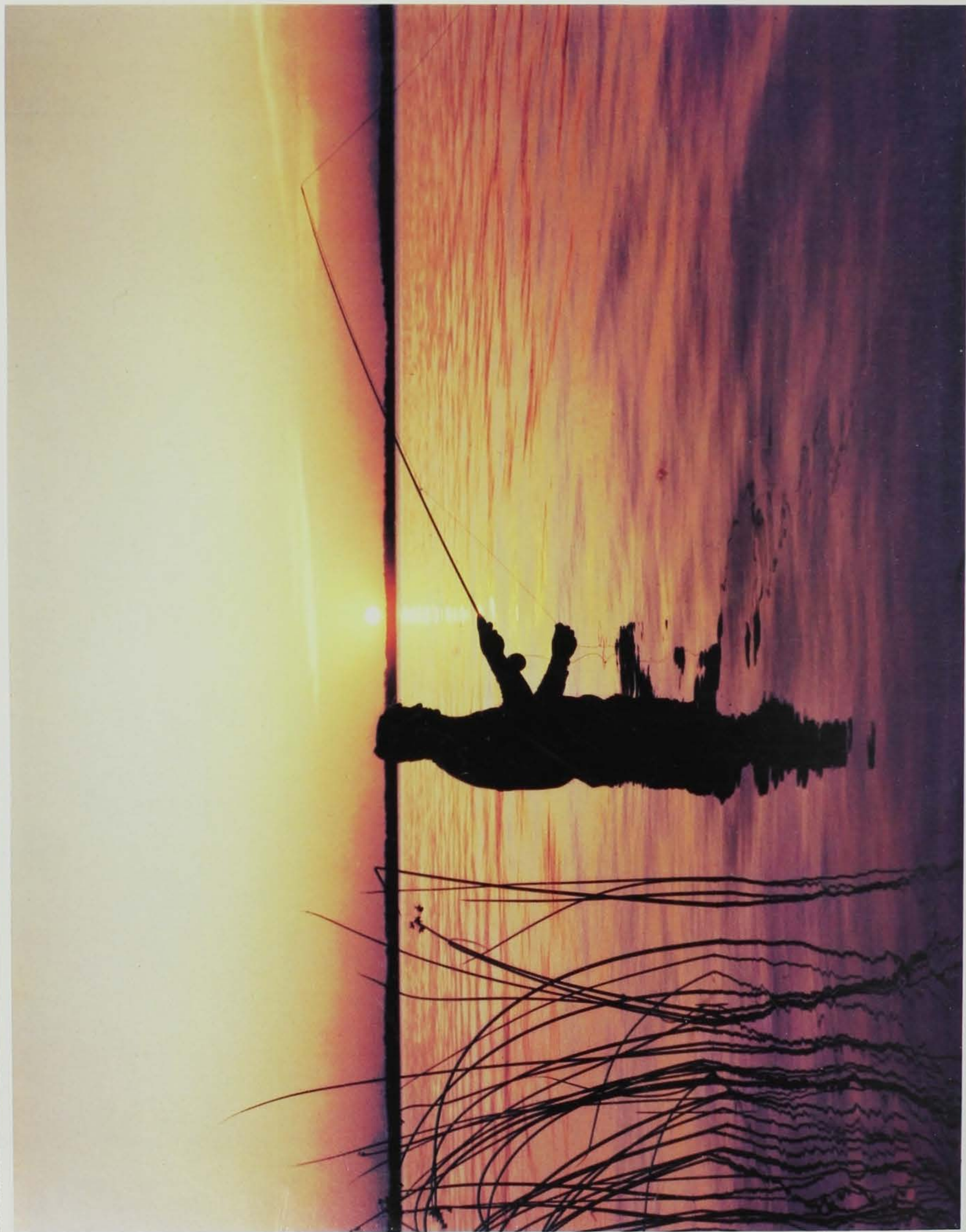
JUNE 1986

SUNDAY	MONDAY	TUESDAY	WEDNESDAY	THURSDAY	FRIDAY	SATURDAY
1	2	3	4	5	6	7
8	9	10	11	12	13	14
15 FATHERS DAY	16	17	18	19	20	21
22	23	24	25	26	27	28
29	30	<p>Iowa has its share of natural treasures, but the state is quickly losing certain habitat types. Although common today, blue flag iris and blue-joint grass require a specific wetland habitat which may be lost in the future. The Natural Areas Inventory and State Preserves Board help identify and maintain unique communities, endangered species and sensitive environments. Photo by Cathy Meddin.</p>				



JULY 1986

SUNDAY	MONDAY	TUESDAY	WEDNESDAY	THURSDAY	FRIDAY	SATURDAY	
<p>Sparked by Iowans' desire to understand the natural character of their surroundings, state parks have become learning centers. For example, the Ledges State Park in Boone County is the destination of field trips by numerous school groups involved in Outlook, the state's environmental education program. Self-guided nature trails and interpretive campground programs also give visitors to state parks a new appreciation of Iowa. Photo by Ron Johnson.</p>		1	2	3	4 INDEPENDENCE DAY	5	
	6	7	8	9	10	11	12
	13	14	15	16	17	18	19
	20	21	22	23	24	25	26
	27	28	29	30	31		



AUGUST 1986

SUNDAY

MONDAY

TUESDAY

WEDNESDAY

THURSDAY

FRIDAY

SATURDAY

Some of the state's best fishing is showcased in the natural lakes of northern Iowa. Famous for musky and walleye angling, these lakes are also top panfish producers. Here, a Spirit Lake angler casts streamers for perch against a late August sunset. Photo by Ken Formanek.

1

2

3

4

5

6

7

8

9

10

11

12

13

14

15

16

17

18

19

20

21

22

23

24

25

26

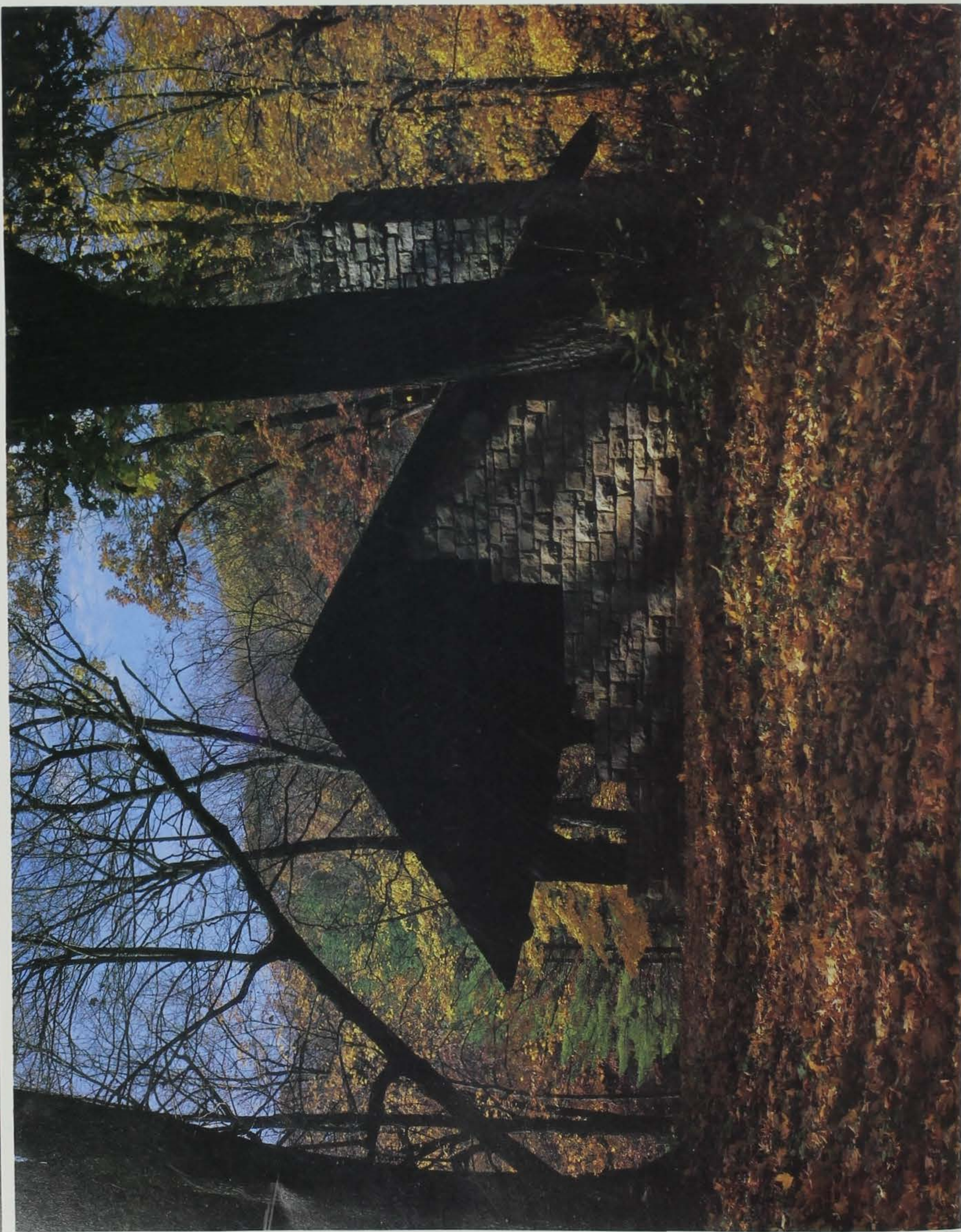
27

28

29

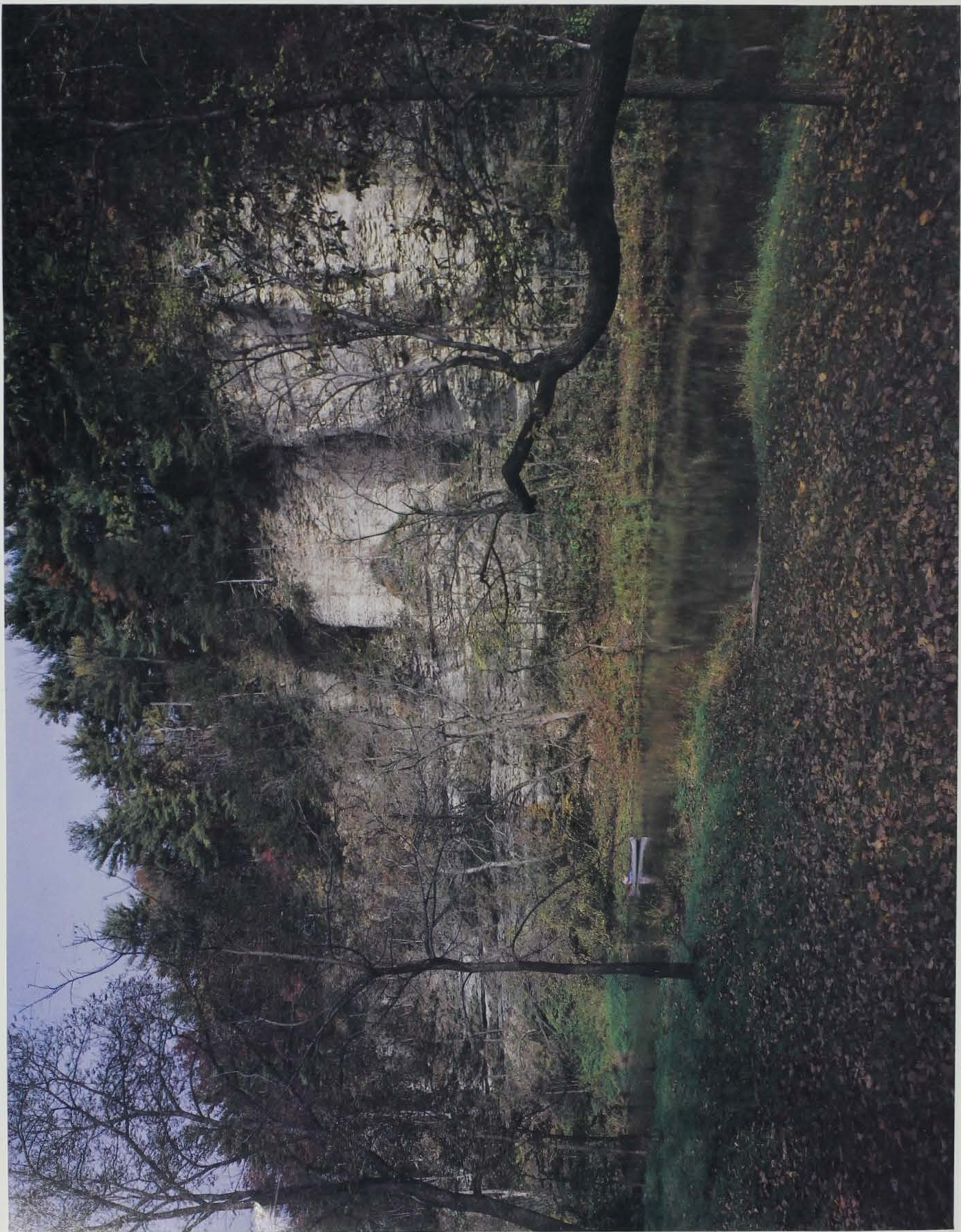
30

31



SEPTEMBER 1986

SUNDAY	MONDAY	TUESDAY	WEDNESDAY	THURSDAY	FRIDAY	SATURDAY
	1 LABOR DAY	2	3	4	5	6
7	8	9	10	11	12	13
14	15	16	17	18	19	20
21	22	23	24	25	26	27
28	29	30	<p>The enclosed shelter at Backbone State Park blends beautifully into its natural background. Using local logs and limestone, the Civilian Conservation Corps constructed this and other facilities in state parks throughout Iowa some 50 years ago. Repairs to these rustic landmarks and the development of facilities to meet modern recreational needs has prompted the Iowa Conservation Commission to seek additional funds through donations and an annual park user fee.</p> <p><small>Photo by Ron Johnson.</small></p>			



OCTOBER 1986

SUNDAY

MONDAY

TUESDAY

WEDNESDAY

THURSDAY

FRIDAY

SATURDAY

The character of Iowa's waterways varies from the slow-drifting meanders of the flat-land rivers to the quick-paced, limestone riffles of boundary streams like the Upper Iowa near Bluffton. Access to these waters is gained through land acquisition by the State Conservation Commission and county conservation boards. The state's Protected Water Areas program uses additional means to protect these natural areas. Photo by Ron Johnson.

1

2

3

4

5

6

7

8

9

10

11

12

COLUMBUS DAY
(OBSERVED)

13

14

15

16

17

18

19

20

21

22

23

24

25

26

27

28

29

30

HALLOWEEN

31



NOVEMBER 1986

SUNDAY

MONDAY

TUESDAY

WEDNESDAY

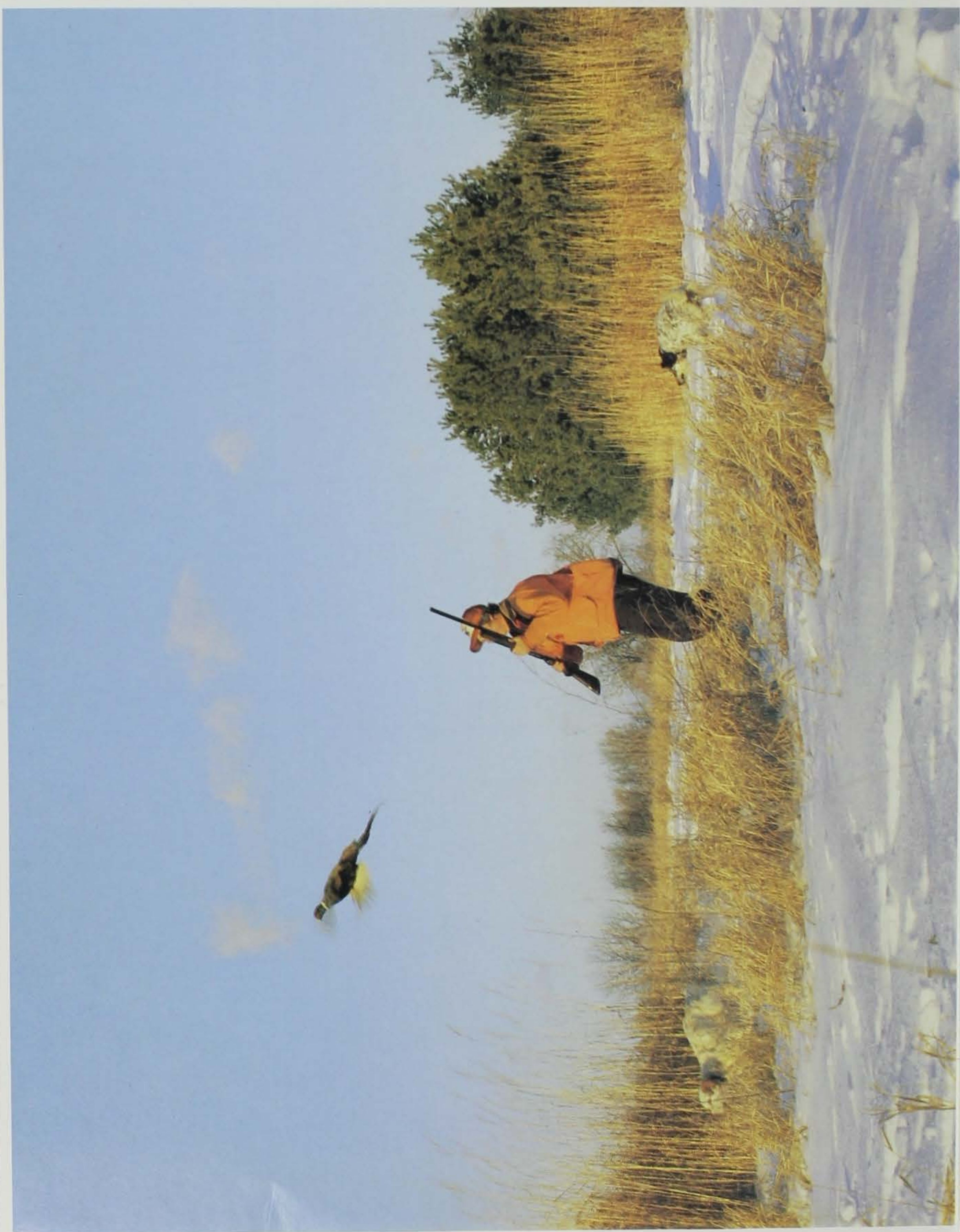
THURSDAY

FRIDAY

SATURDAY

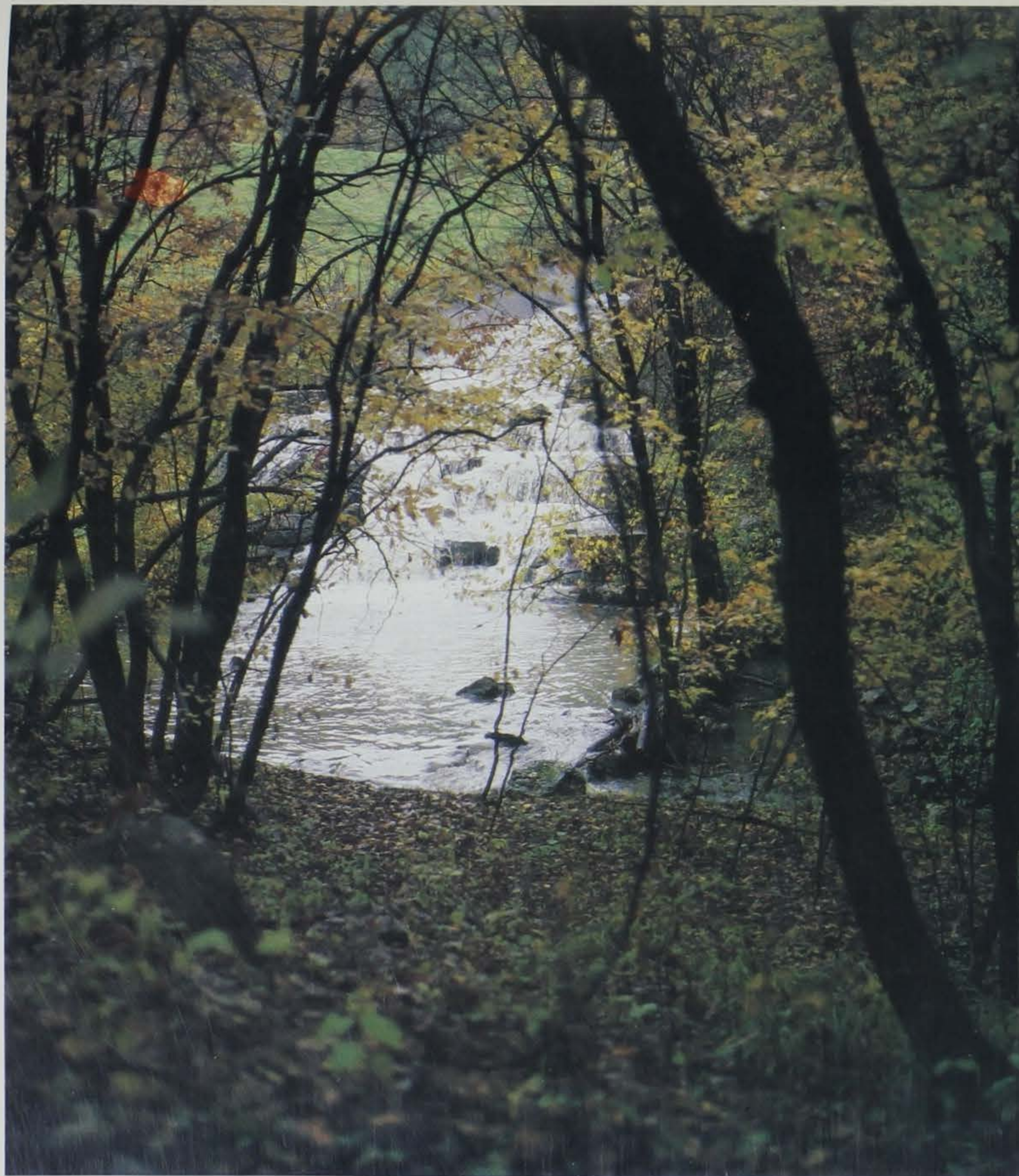
Iowa's woodlands offer a number of renewable resources. Good timber management enables landowners to use their trees as a cash crop, as they selectively harvest for fuelwood or lumber. Wise management also benefits wildlife. Like ghosts from the past, wild turkeys again haunt the woods, producing another harvestable crop for Iowans. Photo by Ron Johnson.

<p>Iowa's woodlands offer a number of renewable resources. Good timber management enables landowners to use their trees as a cash crop, as they selectively harvest for fuelwood or lumber. Wise management also benefits wildlife. Like ghosts from the past, wild turkeys again haunt the woods, producing another harvestable crop for Iowans. Photo by Ron Johnson.</p>							1
2	3	4	5	6	7	8	
		ELECTION DAY					
9	10	11	12	13	14	15	
		VETERANS DAY					
16	17	18	19	20	21	22	
23	24	25	26	27	28	29	
			THANKSGIVING				
30							



DECEMBER 1986

SUNDAY	MONDAY	TUESDAY	WEDNESDAY	THURSDAY	FRIDAY	SATURDAY
	1	2	3	4	5	6
7	8	9	10	11	12	13
14	15	16	17	18	19	20
21	22	23	24	25	26	27
28	29	30	31	<p>CHRISTMAS</p> <p>A late-season hunt following a fresh snow has put many an Iowa pheasant on the Christmas dinner table. Scenes like this are made possible by wildlife management, research and law enforcement programs sponsored solely by hunter license fees and an excise tax on sporting arms and ammunition. Photo by Ron Johnson.</p>		



Give the Iowa CONSERVATIONIST to a Friend

Buy Additional Calendars

Give a subscription to a friend. Each gift subscription will include a copy of the 1986 Conservationist calendar at no extra charge.

You may also order additional calendars for yourself at \$2.00 each.

To order additional calendars or a gift subscription fill out the order blanks below and mail with a check or money order to the **Iowa Conservationist, Iowa Conservation Commission, Wallace Building, Des Moines, Iowa 50319-0034.**

Beat the July, 1986 subscription price increase. Order your gift subscriptions now!

Please send my friend a one-year subscription to the Conservationist and include with it a copy of the 1986 calendar _____ \$5.00 each order.

Amount Enclosed \$ _____

NAME _____

ADDRESS _____

CITY _____ STATE _____ ZIP _____

GIVER'S NAME _____

Please send me ☐ 1986 calendar(s) at \$2.00 each.

Amount Enclosed \$ _____

NAME _____

ADDRESS _____

CITY _____ STATE _____ ZIP _____

• offer limited while supply lasts •

DEC 13 1988



Iowa Conservation Commission
Wallace Building
Des Moines, Iowa 50319-0034