

37/3 March 1978

FREE JXST++OST+ITRVL+
ST TRAVELLING LIB COMP
ST HISTORICAL BLDG
DES MOINES IA 50319

conservationist



Bald



Volume 37, Number 3

conservationist

CONTENTS FOR MARCH 1978

2

THE PONDEROUS PADDLEFISH

3

A STRANGE YEAR

4

1977 BIG FISH ENTRIES

11

ALL-TIME IOWA RECORD FISH

14

WARDEN'S DIARY

15

CLASSROOM CORNER

Back Cover: Canada Geese by
Jim Landenberger

STAFF

Roger Sparks, Editor
Robert Runge, Managing Editor
Kenneth Formanek, A-V Coordinator
Ron Johnson, Photographer
Julius Satre, Contributing Editor
Lois Carty, Circulation Manager

All persons are entitled to full and equal enjoyment of the recreational opportunities, privileges and advantages available in Iowa's great outdoors.

COMMISSIONERS

John C. Thompson, Forest City, Chairman; John Link, Burlington; Carolyn T. Lumbard, Des Moines; Herbert T. Reed, Winterset; John Brophy, Lansing; Marian Pike, Whiting; Thomas Bates, Bellevue.

DIRECTOR

Fred A. Piewert
William C. Brabham, Deputy Director

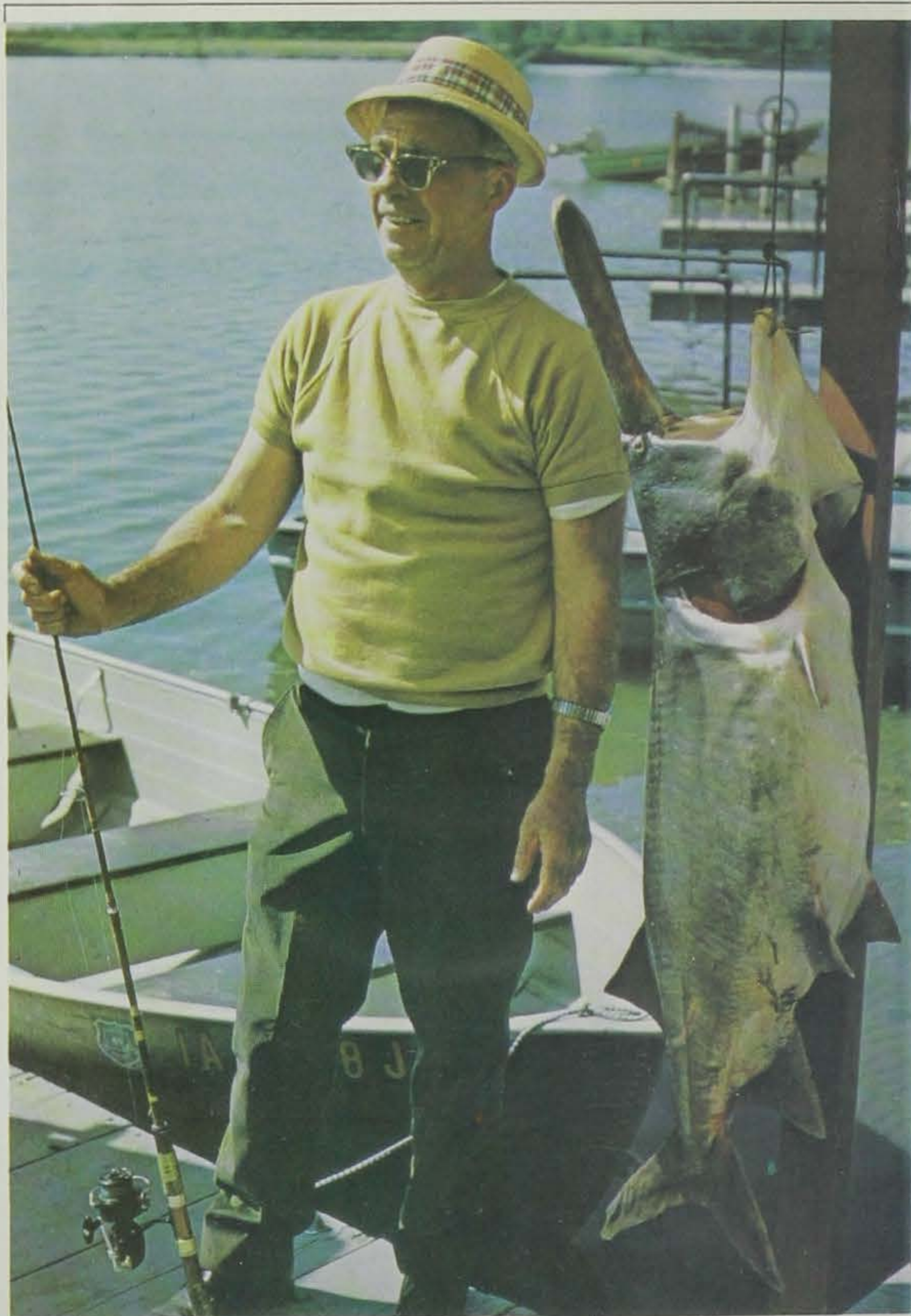
DIVISION CHIEFS

Harry M. Harrison, Fish and Game; Stanley C. Kuhn, Division of Administration; Gerry F. Schnepl, Resource and Program Planning; John M. Stokes, Lands and Waters.

SECTION SUPERINTENDENTS

Tom Albright, Engineering; Joe W. Brill, Parks; Robert Barratt, Wildlife; James Mayhew, Fisheries; Roy Downing, Waters; Robert Fagerland, Land Acquisition; Lester Fleming, Grants-In-Aid; Gene Hertel, State Forester; Kenneth Kakac, Law Enforcement; Caryl Carstens, License; Larry Davis, Information & Education; Gene Geissinger, Accounting; Doyle Adams, County Conservation Boards; Arnie Sohn, Planning.

Published monthly by the Iowa Conservation Commission, Wallace State Office Bldg., Des Moines, Iowa 50319. Address all mail (subscriptions, change of address, Form 3579, manuscripts, mail items) to the above address. Subscription price: one year at \$2.00; two years at \$3.00; four years at \$5.00. Second class postage paid at Des Moines, Iowa and other points.



The PONDEROUS PADDLEFISH

by Dean Beck

FISHERY RESEARCH TECHNICIAN

Photo by Rock Bridges

PADDLEFISH, commonly called spoonbill cat or simply "spoonies" by local fishermen, are one of the most primitive of modern fish. Since liberalization of state rules to include snagging in large rivers, these giant creatures present a new and challenging sport unequalled in Iowa.

In appearance, the paddlefish is gray-blue above, fading to almost white below. They can be distinguished from all other fish by an elongated, paddle-shaped snout, extremely long

ll covers, and a toothless
arklike mouth. They have a
nooth, scaleless skin, and a
artilaginous skeleton as does
e shark. Paddlefish com-
only attain weights from 40 to
pounds and lengths from 4 to
feet.

At one time, paddlefish were
ther common in such Iowa
aters as Lakes Okoboji and
pirit, but today are limited to
ie Mississippi and Missouri
ivers, larger tributaries such
s the Des Moines and Iowa
ivers, and a few Missouri
iver oxbows.

Paddlefish tend to concen-
ate below navigation dams on
ie Mississippi, allowing easy
ccess to them. In the Missouri
iver, they can be found in deep
oles near pile and wing dikes.
atch success is influenced by
easonal changes in schooling
ehavior. In the warmer
onths, paddlefish are dis-
ersed randomly below navi-
ation dams, while in cold win-
er months they form tight
chools and remain near the
ottoms.

Paddlefish have a very
laborate filtering system
ocated on the gills, giving them
he ability to sift minute plank-
onic life from the water. Be-
ause of their food habits, pad-
dlefish can't be caught by con-
ventional fishing methods and
snagging must be utilized.

Snagging was legalized in
November, 1974, and has
blossomed into an exciting new
fishery. The snagging season is
continuously open and the daily
catch limit is two paddlefish.
Recent laws now make it legal
o keep rough fish caught while
snagging paddlefish, but this
happens very infrequently.

Equipment necessary for
paddlefish snagging includes a
heavy freshwater or light salt-
water pole with matching reel
capable of handling 20-30 lb.
est line. A typical rig consists of
a 4 to 8 ounce weight attached
o the end of the line and two
size 4/0 and 8/0 treble hooks
tied solidly to the line about 5
feet apart, beginning one foot
above the weight. The amount
of weight necessary to reach
bottom may vary accordingly
with current. There is no mess
or smell from bait since none is
necessary.

Snagging techniques vary

with individuals. Trolling per-
pendicular to the current while
making a long jerk with the rod
is the most common and pro-
ductive. Drifting downstream
with the current is a lesser used
method. After a school of fish
has been located, anchoring and
casting is effective. Regardless
of technique, a sharp hook and
a vigorous jerk of the line are
necessary to penetrate their
tough skin.

Snagging on the Mississippi
occurs largely within 900 feet
below the navigation dams.
Snaggers should be aware of the
100 foot restricted zone im-
mediately below these dams
with flashing red lights defining
this boundary. Because of ex-
tremely turbulent water and
dangerous undertows, a sea-
worthy boat, a reliable motor
and proper safety devices are a
must.

Lock and Dam 12 at Bellevue
is Iowa's "hot spot." Lock and
Dam 11 at Dubuque, 16 at
Muscatine, 19 at Keokuk and
17 at New Boston also produce
good catches. Local sporting
good stores and bait shops can
usually supply necessary
equipment and up-to-date
information about snagging
conditions.

The paddlefish is excellent
table fare. It has firm boneless
meat that is delicious boiled,
deep-fried or smoked.

The Iowa Conservation
Commission is studying paddle-
fish in the Mississippi River to
determine harvest rates by sport
and commercial fishermen, size
of the population, potential
yield, growth, movement and
other biological facts. As part of
the study, over 1,500 paddlefish
have been marked with num-
bered tags. Success of this study
is largely dependent on infor-
mation returned from tagged
fish; therefore, anyone captur-
ing tagged fish is requested to
report tag numbers, date of
capture, and where the fish was
captured to the Iowa Conser-
vation Commission. Informa-
tion from snaggers will play a
vital role in contributing to fu-
ture management of this
resource.

The ponderous paddlefish
represents a trophy sized fish, a
primitive curiosity, and a chal-
lenge to any Iowa fisherman
who cares to accept it.

1977: a strange year, but interesting

by R. Runge

THE PRECEDING FALL was dry. The ice came in hard
and fast when streams and lakes were at very low levels.
The fishing year 1977 began on a low note and behaved
strangely all season long.

In January and February major fish kills were predicted in
many lakes and ponds as well as in miles of Iowa streams. When
the ice finally went out some people and newspapers believed that
all the fish in Iowa were dead. We know now that this estimation
was way off base, but many people were reluctant to begin fishing.
Then just when things were looking up and reports of good fishing
began to surface, it got hot. Boy, did it get hot. If you did catch a
fish you could pull him out and fry him on a nearby rock. Fishermen stayed home in droves. Picnickers were mixing instant
coffee with water from the lake.

It stayed hot so long many people stayed indoors until the fair,
and when they did come out it wasn't with a fishing rod it was in
an asbestos suit. Someone said we wouldn't have to burn leaves
that fall, they would burn right on the trees. Yes, it was a strange
fishing year—and no one caught any fish, right? Wrong! We had
more big fish entries than ever before—over 300 patches and
certificates were sent out. Just for example, let's look at the new
records set in 1977.

The yellow bass record tumbled again in 1977 and once again
the fish came from Clear Lake. Elmer Beck of Clear Lake caught a
1 lb. 3 oz. stalker in April which topped the old record by 2½ oz.

In February, Allen Forsberg of Albert City managed to drag in
a 25 lb. 5 oz. northern pike from West Okoboji. The old record
was 25 lb. even.

All of the smaller suckers are now included in one category to
avoid the difficult identification problems. This record now
belongs to Dwain A. Nading from McGregor who caught a 6 lb.
9½ oz. sucker from the Yellow River in March.

Another combined category will now include all the
miscellaneous sunfish other than bluegills. This record was set in
June when Delbert Cover of Mediapolis caught a 1 lb. 7 oz. fish
from a farm pond in Des Moines County.

The rainbow trout record was upped two whole pounds when
Chuck Greth of West Des Moines fishing in the Turkey River in
August managed to entice a 15 lb. 8 oz. lunger onto the hook.

It is also interesting to note that two sturgeon records were
established in 1977, and they may stand for a long time. Both fish
are now listed as endangered and are no longer legal for fishermen
to take. A pallid sturgeon, not often found in Iowa waters, was
taken by Zeke Castro of Sioux City from the Missouri River in
Woodbury County. The fish weighed 18 lb. 8 oz. A record was
also established for rock or lake sturgeon. Martin Cabbage of
Muscatine caught a 40-pound fish while fishing in the Mississippi
River in Muscatine County. These fish were both first entries ever
in their categories.

This all goes to prove that even in a strange year fishing can be
very good in Iowa. If you are one of the ones who stayed home,
you missed some good action. Don't let it happen in 1978; get
your gear ready early and get out there.

Seven New State Records!

1977 BIG FISH ENTRIES



Susan Abel of Spencer proudly displays her 7 lb., 21½ inch largemouth bass caught in a Dickinson County gravel pit.

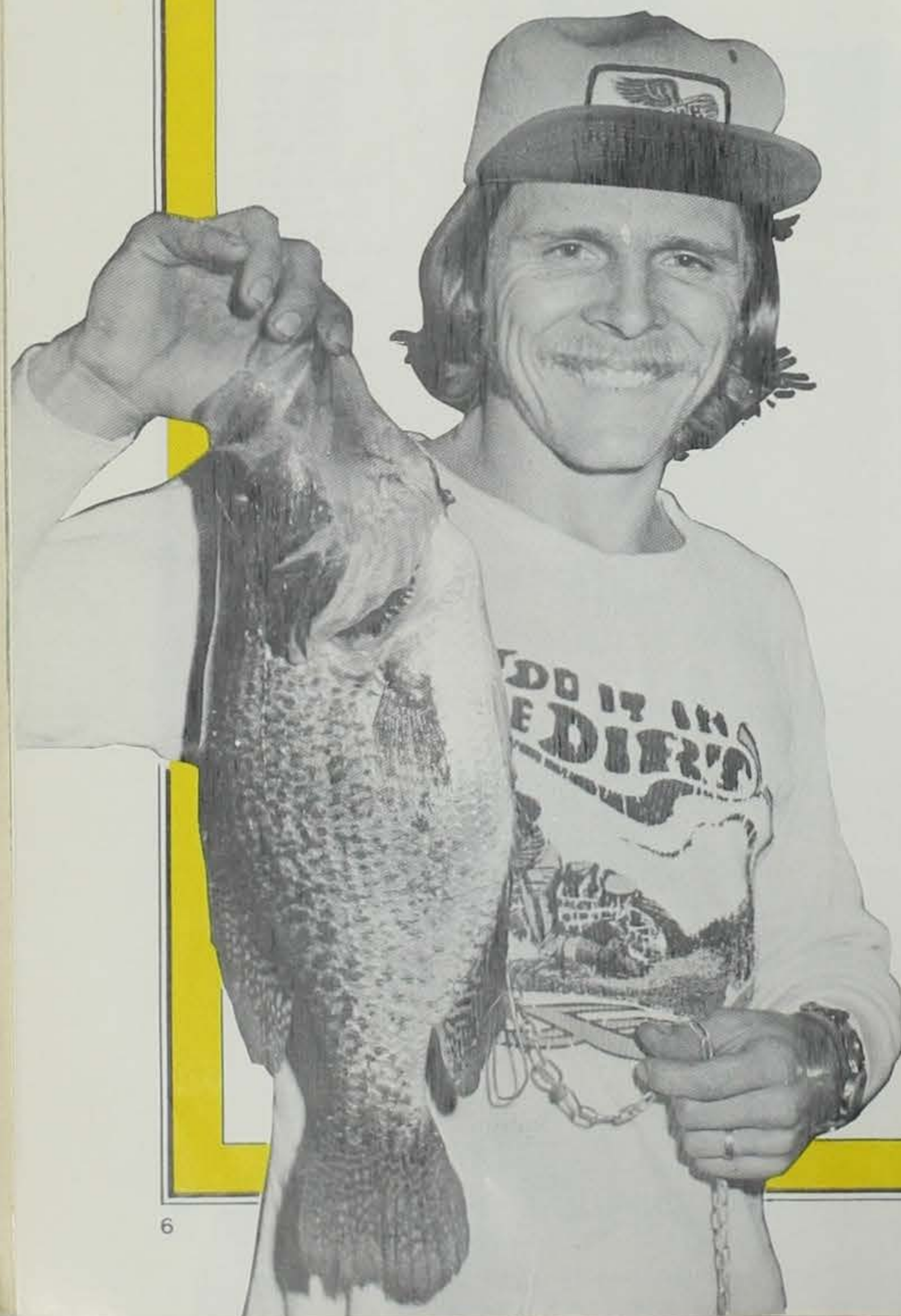
Weight	Length	Where Caught	Date	Angler
BASS (Largemouth)				
9 lb. 8 oz.	23"	Farm Pond Lucas County	4-24	Jiles O. Lowe Humeston
9 lb. 2 oz.	22½"	Farm Pond Decatur County	4-8	Bruce Vanderpool Des Moines
8 lb. 15 oz.	21¼"	Farm Pond Carroll County	4-30	Curtis Bentley Coon Rapids
8 lb. 10 oz.	23½"	Farm Pond Davis County	7-24	Robert L. Morlan Bloomfield
8 lb. 10 oz.	24½"	Gosh-Moore Lake Wayne County	9-4	Robert E. Sanders, Jr. Lineville
8 lb. 6½ oz.	21½"	Farm Pond Crawford County	4-7	Richard B. Cross Dow City
8 lb. 4 oz.	22¼"	Lake Wapello Davis County	4-3	Leo J. Welch Burlington
8 lb. 1 oz.	24"	Clay Pit Cerro Gordo County	5-8	Mike Gribben Mason City
8 lb.	23"	Farm Pond Polk County	4-27	Mark Wilkens Altoona
7 lb. 13½ oz.	23¾"	Farm Pond Mills County	3-24	Larry R. Fellows Omaha, Nebraska
7 lb. 12 oz.	24"	Lake Geode Henry County	5-8	Richard R. Schroeder Cedar Rapids
7 lb. 12 oz.	24"	Farm Pond Cass County	10-4	Bob Wysong Atlantic
7 lb. 10 oz.	22¼"	Lake Wapello Davis County	4-18	James Augspurger Bloomfield
7 lb. 8½ oz.	20½"	Farm Pond Poweshiek County	7-26	David Dean Moore Montezuma
7 lb. 8 oz.	23"	Farm Pond Mills County	7-12	Jim Norwood Bellevue, Nebraska
7 lb. 8 oz.	23¾"	Mariposa Jasper County	4-10	Richard L. Raridon Newton
7 lb. 8 oz.	22"	Farm Pond Jefferson County	6-29	Virginia M. Savage Fairfield
7 lb. 5 oz.	22"	Farm Pond Lucas County	5-21	Jerry Romine Chariton
7 lb. 4 oz.	22½"	Lake Iowa Iowa County	4-23	Ben Galloway Cedar Rapids
7 lb.	21½"	Gravel Pit Dickinson County	5-14	Susan Abel Spencer
BASS (Rock)				
1 lb. 4 oz.	13"	Shell Rock River Butler County	4-30	Gary Kampman Clarksville
1 lb. ½ oz.	9¾"	Mississippi River Dubuque County	7-19	Bryan Timmerman Waterloo
BASS (Smallmouth)				
5 lb. 11 oz.	21"	West Okoboji Dickinson County	4-15	Orville Belken Spencer
5 lb.	22"	West Okoboji Dickinson County	8-14	Dave Hennings Hartley
5 lb.	20½"	West Okoboji Dickinson County	10-28	Norbert Strouth Ashton
4 lb. 12 oz.	20¼"	West Okoboji Dickinson County	10-1	Tony Taylor Sioux City
4 lb. 10 oz.	20¼"	Spirit Lake Dickinson County	6-6	Steve Stewart Des Moines
4 lb. 8 oz.	19"	Maquoketa River Jones County	3-25	Mike Duncan Monticello
4 lb. 7 oz.	20¼"	Cedar River Black Hawk County	11-19	Carl F. Lilienthal Waterloo
4 lb. 6 oz.	21"	West Okoboji Dickinson County	9-10	Tom McMahan Spencer
4 lb. 6 oz.	20"	West Okoboji Dickinson County	9-21	Norbert Strouth Ashton
4 lb. 5 oz.	20"	West Okoboji Dickinson County	4-9	Doug Stange Sibley
4 lb. 4 oz.	20"	West Okoboji Dickinson County	3-7	Gordon Hansch Rockwell City
4 lb. 4 oz.	19¾"	West Okoboji Dickinson County	9-25	Al Koenigsfeld Paullina
4 lb. 4 oz.	20"	West Okoboji Dickinson County	9-11	Marianna Jackson Sioux City
4 lb. 4 oz.	19¼"	West Okoboji Dickinson County	4-29	Doug Stange Sibley
4 lb. 4 oz.	20"	West Okoboji Dickinson County	9-24	Tony Taylor Sioux City
4 lb. 3 oz.	19½"	Farm Pond Crawford County	3-19	Matt J. McKibben Manilla
4 lb. 2 oz.	21"	West Okoboji Dickinson County	5-22	Richard Riley Algona
4 lb. 2 oz.	19"	West Okoboji Dickinson County	11-1	Marvin Rossiter Spencer
4 lb. 1 oz.	19¼"	West Okoboji Dickinson County	3-7	Gordon Hansch Rockwell City

Weight	Length	Where Caught	Date	Angler
4 lb.	20"	West Okoboji Dickinson County	9-30	Lawrence Bendlin Spencer
4 lb.	19½"	West Okoboji Dickinson County	2-22	Gordon Hansch Rockwell City
4 lb.	19"	West Okoboji Dickinson County	7-7	Louis Meinen Ashton
4 lb.	19¼"	West Okoboji Dickinson County	9-30	Norbert J. Strouth Ashton
4 lb.	19½"	Wapsipinicon River Bremer County	-	James Bloem Tripoli
BASS (White)				
3 lb. 8 oz.	19"	West Okoboji Dickinson County	1-15	Fred Wilson Okoboji
2 lb. 13 oz.	17"	West Okoboji Dickinson County	4-29	Ray Barthole Milford
2 lb. 13 oz.	17½"	Mississippi River Des Moines County	4-7	Jim Haberichter West Burlington
2 lb. 13 oz.	18½"	West Okoboji Dickinson County	5-7	Toby Simpson Omaha, Nebraska
2 lb. 12 oz.	18"	West Okoboji Dickinson County	5-15	Robert Duncan Milford
2 lb. 10 oz.	18"	Clear Lake Cerro Gordo County	8-2	Milton Garfin Mason City
2 lb. 10 oz.	16½"	Clear Lake Cerro Gordo County	10-14	Lloyd Klein Mason City
2 lb. 10 oz.	15¼"	Mississippi River Allamakee County	9-16	Mrs. Charles H. Kepler Cedar Rapids
2 lb. 9 oz.	17"	Mississippi River Des Moines County	4-7	Jim Haberichter West Burlington
BASS (Yellow)				
*1 lb. 3 oz.	12¼"	Clear Lake Cerro Gordo County	4-19	Elmer Beck Clear Lake
1 lb. 1 oz.	11¾"	Clear Lake Cerro Gordo County	4-18	Elmer Beck Clear Lake
1 lb.	12"	Clear Lake Cerro Gordo County	4-23	Allan Asche Clear Lake
1 lb.	12"	Clear Lake Cerro Gordo County	7-10	Robert K. Dilly Hampton
15½ oz.	11½"	Farm Pond Muscatine County	5-14	Dick Matheson Davenport
15 oz.	11½"	Clear Lake Cerro Gordo County	4-30	Arlin Schalekamp Clear Lake
15 oz.	11"	Clear Lake Cerro Gordo County	8-16	Leo Statelman Clear Lake
13½ oz.	11½"	Arrowhead Lake Sac County	4-29	Ron Thelen Breda
13 oz.	11"	Clear Lake Cerro Gordo County	7-16	Mike Buckert Des Moines
13 oz.	11"	Clear Lake Cerro Gordo County	5-25	Carol J. Olson Mason City
BLUEGILL				
1 lb. 7 oz.	11"	Farm Pond Lucas County	5-30	John Bridger Waukee
1 lb. 6 oz.	11"	Farm Pond Dubuque County	9-5	Phillip Curoe Bernard
1 lb. 6 oz.	11 7/16"	Farm Pond Davis County	7-25	Glenda Johnson Bloomfield
1 lb. 3 oz.	11¼"	Springbrook Lake Guthrie County	4-24	Larry Willey Yale
1 lb. 2 oz.	10½"	Farm Pond Warren County	9-3	Gregory J. Day Indianola
1 lb. 2 oz.	10½"	West Okoboji Dickinson County	1-13	Dan Kramme Ashton
1 lb. 2 oz.	10"	West Okoboji Dickinson County	7-21	Merwin Smith Terril
1 lb. 1 oz.	9"	Farm Pond Mills County	8-7	Lester Noel Council Bluffs
1 lb. ½ oz.	10"	Farm Pond Des Moines County	8-13	Bob Glick Burlington
BUFFALO				
35 lb. 5 oz.	39"	Clear Lake Cerro Gordo County	?	Jack B. Easton Clear Lake
BULLHEAD				
3 lb. 8 oz.	17½"	Farm Pond Cass County	4-19	George P. Worrall Atlantic
2 lb. 14 oz.	15"	Farm Pond Clarke County	5-14	Linda Tuttle Truro
2 lb. 13½ oz.	15¼"	Farm Pond Iowa County	5-8	Wayne Ehrman Blairstown
2 lb. 10 oz.	14¾"	Farm Pond Jefferson County	4-25	Virginia M. Savage Fairfield
2 lb. 8 oz.	14"	Farm Pond Jefferson County	4-25	Virginia M. Savage Fairfield
CARP				
32 lb. 8 oz.	38"	Spirit Lake Dickinson County	4-29	Paul H. Otto Lake City

*New State Record

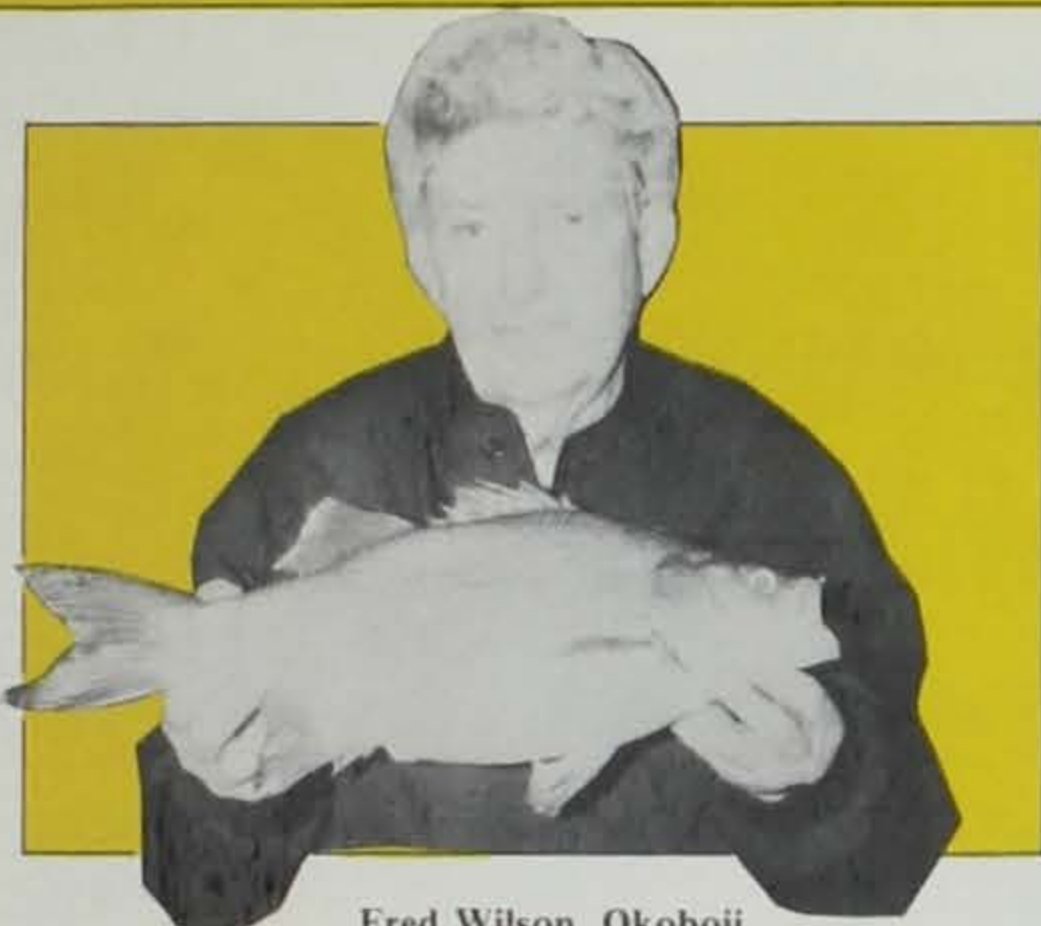
Weight	Length	Where Caught	Date	Angler
CHANNEL CATFISH				
21 lb. 12 oz.	35"	Lake Darling Washington County	10-8	C. S. Stuber Ottumwa
20 lb. 2 oz.	30"	Farm Pond Fremont County	7-2	Glen Harms Shenandoah
19 lb. 4 oz.	33"	Lake Ahquabi Warren County	7-3	Jeff Curtis Des Moines
15 lb.	31"	Lake Darling Washington County	6-19	Don Ash Wilton
FLATHEAD CATFISH				
47 lb.	45"	Cold Springs Lake Cass County	5-29	Waylon Caron Omaha, Nebraska
40 lb.	44½"	Raccoon River Dallas County	3-11	Mike Painovich Des Moines
38 lb. 1 oz.	40"	Iowa River Johnson County	7-11	Randy Mueller Iowa City
30 lb.	41"	Mississippi River Jackson County	7-4	Gerald L. Hyde Cedar Rapids
28 lb.	46"	Farm Pond Mills County	5-14	John Fisher Pacific Junction
26 lb. 4 oz.	37¼"	Des Moines River Lee County	5-14	David L. Adkins Donnellson
22 lb. 8 oz.	34"	Des Moines River Boone County	10-20	Ted Adams Woodward
22 lb.	37"	Des Moines River Marion County	9-30	Ray Budrevich Des Moines
21 lb. 13 oz.	34"	Des Moines River Polk County	6-27	Chuck Porto West Des Moines

David Fisch, Montezuma, and his 3 lb., 9¼ oz. crappie caught in Diamond Lake.



Orville Belkin, Spencer.

Weight	Length	Where Caught	Date	Angler
CRAPPIE				
3 lb. 9¼ oz.	19¼"	Diamond Lake Poweshiek County	5-20	David W. Fisch Montezuma
3 lb. 2 oz.	18¾"	Farm pond Marshall County	12-17	David Fleming Ames
3 lb. 2 oz.	18½"	Twin Anchors Lake Story County	5-14	Herbie Wilson Marshalltown
3 lb. 3 oz.	18½"	Lake Lacey-Keosauqua Van Buren County	9-16	Tim Krebill Fort Madison
3 lb. 1 oz.	18"	Diamond Lake Poweshiek County	6-26	Thomas A. Sosebee Montezuma
2 lb. 14 oz.	17¼"	Green Castle Lake Marshall County	2-1	Tom Fitch Marshalltown
2 lb. 14 oz.	18¼"	Farm Pond Jones County	5-3	John Trumm Cascade
2 lb. 13 oz.	15½"	Hallet Pits Sac County	5-8	Joseph Fleskes Carroll
2 lb. 13 oz.	17"	Green Castle Lake Marshall County	1-22	Donald Stoner Estherville
2 lb. 12 oz.	17"	Lake Wapello Davis County	4-15	Wayne Bangert, Sr. Blue Grass
2 lb. 10 oz.	17"	Farm Pond Monona County	4-8	Garry D. Tucker Whiting
2 lb. 10 oz.	17"	Farm Pond Henry County	8-2	Stanley L. Waterman, Jr. New London
2 lb. 9½ oz.	18"	Green Castle Lake Marshall County	1-16	Richard C. McBride Marshalltown
2 lb. 9 oz.	17"	Union Grove Lake Tama County	5-20	Paul Butcher Marshalltown
2 lb. 8 oz.	16"	Sand pit Marshall County	4-30	Greg Harrison Marshalltown
2 lb. 7½ oz.	17½"	Green Castle Lake Marshall County	1-18	Ryan McBride Marshalltown
2 lb. 7 oz.	16½"	Green Castle Lake Marshall County	2-2	Robert W. Anson Marshalltown
2 lb. 7 oz.	16½"	Green Castle Lake Marshall County	1-23	Gloria E. DeBower Marshalltown
2 lb. 7 oz.	16"	Farm pond Davis County	2-26	Gunter Huhndorf Marion County
2 lb. 6½"	17"	Green Castle Lake Marshall County	1-23	Roy DeBower Marshalltown
2 lb. 6½ oz.	17¼"	Hallet Pits Sac County	5-10	Tom Olerich Lake View
2 lb. 6 oz.	16½"	Big Springs Allamakee County	1-21	Eloise N. Kaltenbach Harpers Ferry
2 lb. 4 oz.	16"	Gravel Pit Polk County	5-6	David Craighead, Jr. West Des Moines
2 lb. 4 oz.	16"	Farm Pond Marshall County	1-14	Dennis D. Davis Marshalltown
2 lb. 3½ oz.	17"	Green Castle Lake Marshall County	1-18	Jason McBride Marshalltown
2 lb. 3 oz.	15¼"	Farm pond Poweshiek County	3-16	Gary Criswell Montezuma
2 lb. 3 oz.	16"	Lake Wapello Davis County	7-25	Mary L. Meyer Cedar Rapids
2 lb. 2 oz.	15¼"	Viking Lake Montgomery County	5-27	Randy Smith Clarinda
2 lb. 1 oz.	14"	Easter Lake Polk County	4-17	Jim Griffiths Des Moines
2 lb.	15¼"	Farm Pond Bremer County	5-14	Bob Chestnut Waverly
2 lb.	15¼"	Farm Pond Dallas County	1-30	Thad Keller Des Moines
2 lb.	15"	West Okoboji Dickinson County	4-31	Mike Wolthuis Milford

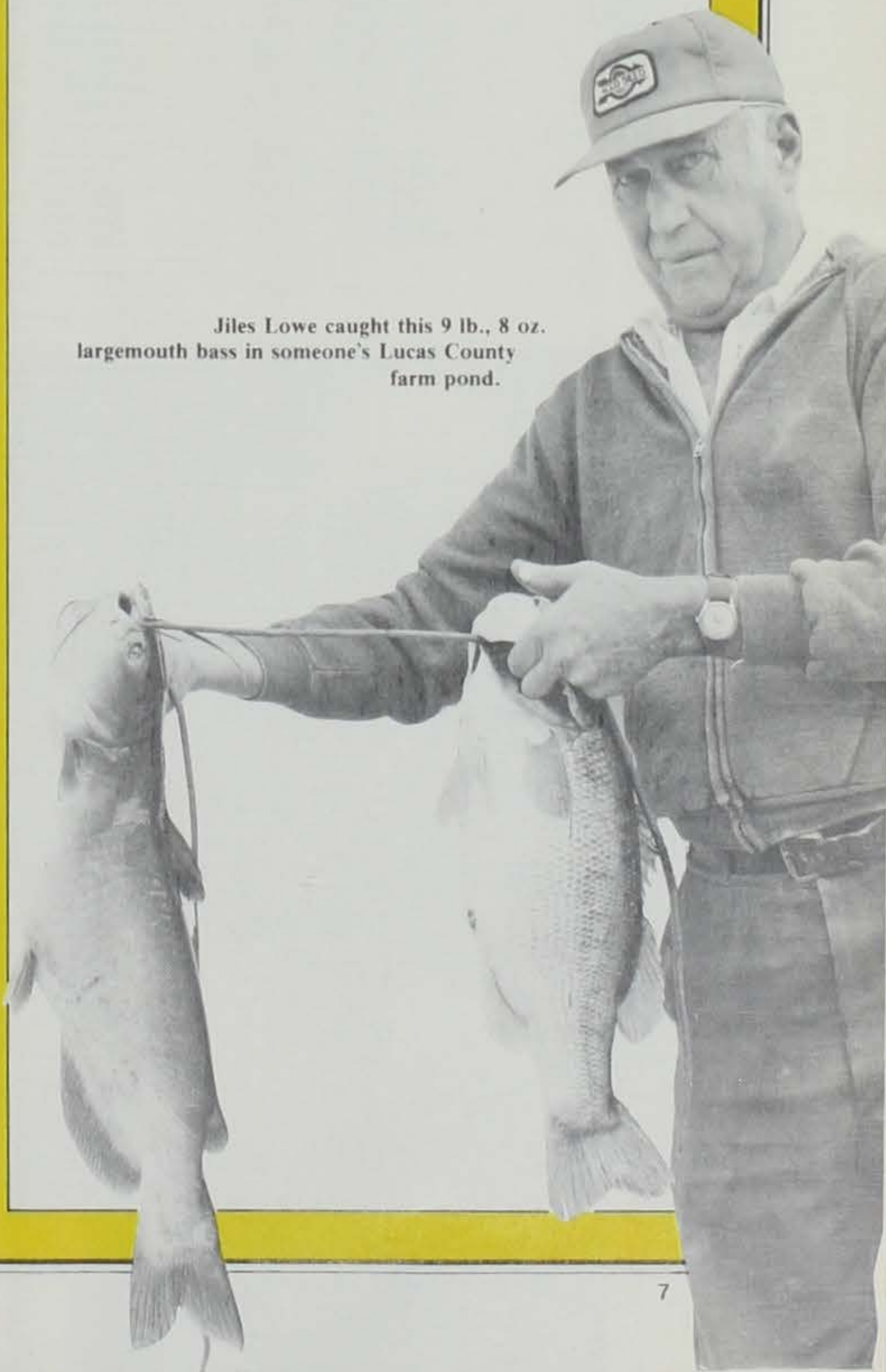


Fred Wilson, Okoboji.

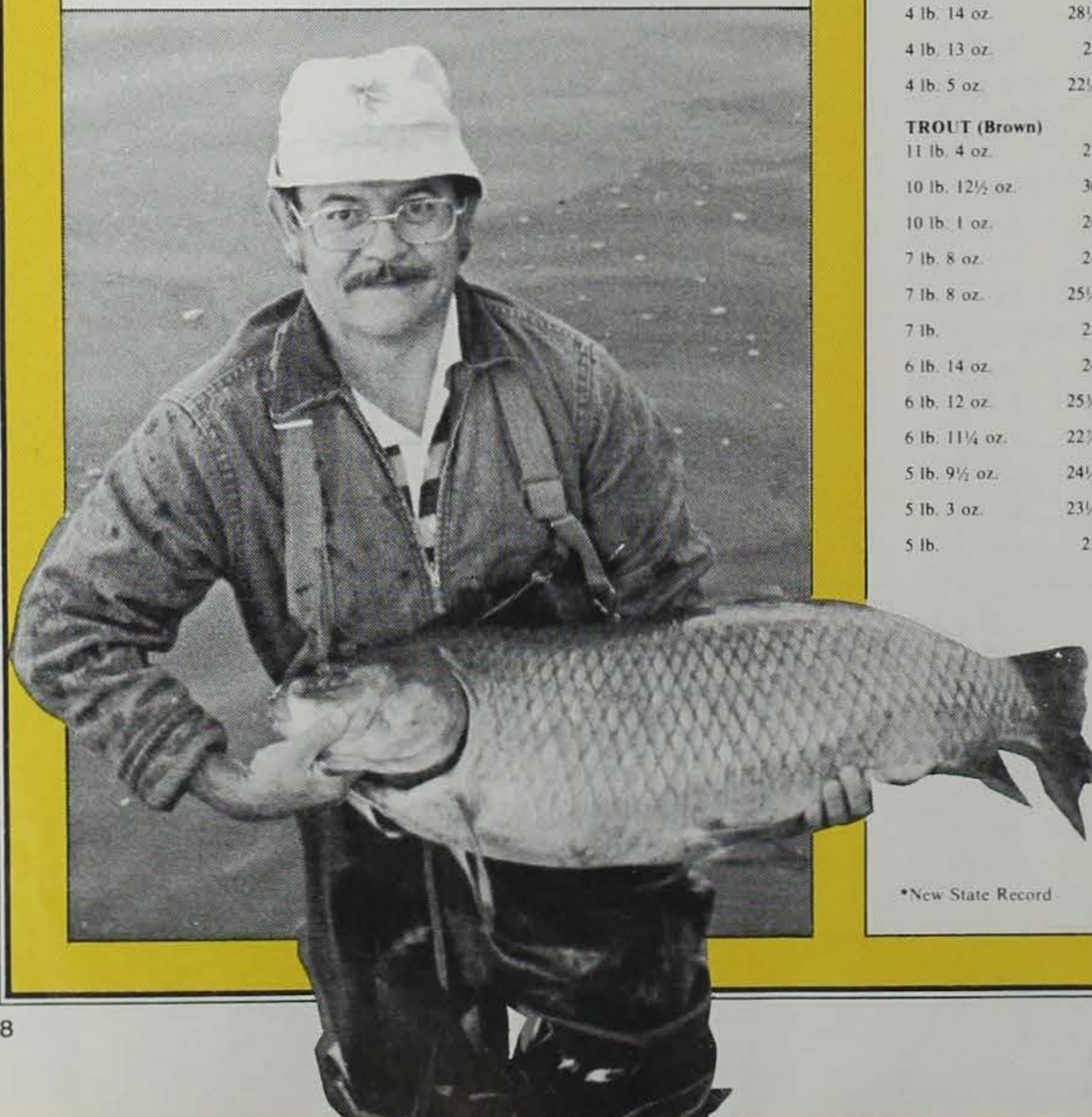
Weight	Length	Where Caught	Date	Angler
11 lb. 8 oz.	37 1/2"	West Okoboji	9-3	Suzanne Akin
11 lb. 8 oz.	35 1/2"	Dickinson County	11-16	Spirit Lake
11 lb. 8 oz.	37 1/2"	West Okoboji	7-26	Clarence Bendlin
11 lb. 3 oz.	33 1/4"	Dickinson County	8-14	Arnolds Park
11 lb.	35 1/2"	Mississippi River	5-29	Don McCulloch
10 lb. 13 oz.	34"	West Okoboji	2-17	Spirit Lake
10 lb. 10 oz.	38"	Dickinson County	9-22	Ronald N. Grinstead
10 lb. 10 oz.	35"	West Okoboji	6-12	Waterloo
10 lb. 9 oz.	35 1/2"	Blue Lake	7-22	Dean Remington
10 lb. 8 oz.	34"	Shell Rock River	3-17	Toddville
10 lb. 8 oz.	35"	Dickinson County	1-8	John Richter
10 lb. 4 oz.	34"	West Okoboji	2-18	Newell
10 lb. 4 oz.	36 1/2"	Dickinson County	8-27	Bud Karas
10 lb.	32"	Mississippi River	4-1	Omaha, Nebraska
10 lb.	33"	Silver Lake	5-12	Don Norton
10 lb.	34 1/2"	Dickinson County	6-23	Sanborn
		Dickinson County		Dean F. Knauer
				Missouri Valley
				Randy Knapp
				Clarksville
				Dan Marchand
				Milford
				Ron Donoho
				Council Bluffs
				Carl F. Lilienthal
				Waterloo
				Douglas D. Riis
				Marion
				Bill Ritterholz
				Spencer
				Dennis W. Ritterholz
				Spencer

Weight	Length	Where Caught	Date	Angler
MUSKELLUNGE				
23 lb.	44 1/2"	West Okoboji	8-25	Jon B. Parks
21 lb. 14 oz.	41 1/2"	Dickinson County	8-27	Milford
20 lb.	38"	West Okoboji	8-26	Mary Gribble
19 lb. 12 oz.	41"	Dickinson County	8-26	Spirit Lake
19 lb. 8 oz.	44"	West Okoboji	8-24	Dan Williams
18 lb. 4 oz.	39"	Dickinson County	4-23	Milford
16 lb. 8 oz.	39"	Big Creek Lake	8-27	Alvin E. Akin
16 lb. 6 oz.	39 1/2"	Polk County	4-30	Spirit Lake
15 lb. 8 oz.	38 1/2"	West Okoboji	8-28	Loren Fligg
		Dickinson County		West Des Moines
				Gordon Hansch
				Rockwell City
				Steven Batten
				Council Bluffs
				Bryan Jewell
				Storm Lake
NORTHERN PIKE				
*25 lb. 5 oz.	45"	West Okoboji	2-4	Allen Forsberg
19 lb.	42 1/2"	Dickinson County	8-10	Albert City
18 lb.	41"	Spirit Lake	2-3	Gerald E. Bradley
17 lb. 4 oz.	43"	Dickinson County	7-2	Estherville
16 lb. 4 oz.	40"	Clear Lake	10-28	Robert Nasheim
15 lb. 9 oz.	41"	Cerro Gordo County	2-1	Mason City
15 lb. 3 oz.	37"	West Okoboji	8-5	Leslie Hill
15 lb.	38"	Dickinson County	2-9	Boone
14 lb. 14 oz.	41 1/2"	West Okoboji	10-1	Cliff Cunningham
14 lb. 8 oz.	40"	Dickinson County	8-30	Leon
14 lb. 8 oz.	41"	West Okoboji	5-30	Ernie Carlson
13 lb. 12 oz.	40"	Dickinson County	8-21	Webb
13 lb. 7 oz.	39 1/2"	Lakeview	5-15	P. M. Dougan
13 lb. 7 oz.	38"	Fremont County	4-14	Hamburg
13 lb. 4 oz.	37 1/2"	West Okoboji	4-22	Verne Hansen
13 lb. 1 oz.	37"	Dickinson County	5-20	Milford
13 lb.	37"	Black Hawk County	1-2	Edward Feldhacker
13 lb.	37"	West Okoboji	7-20	Spencer
12 lb. 12 oz.	41"	Dickinson County	10-14	Alvin E. Akin
12 lb. 9 oz.	39 1/2"	Lake Macbride	6-9	Spirit Lake
12 lb. 3 oz.	35 1/4"	Johnson County	4-9	D. R. George
12 lb.	40"	Clear Lake	5-10	Remsen
11 lb. 11 oz.	36"	Cerro Gordo County	10-26	Suzanne Akin
11 lb. 11 oz.	38"	Wapsipinicon River	12-23	Spirit Lake
		Jones County		John Mahoney
		West Okoboji		Cherokee
		Dickinson County		Rick Ziegenfuss
				Waterloo
				Buddy Claypool
				Alden
				Marvin L. Lindaman
				Cedar Falls
				Randy Benz
				Melvin
				Don McCulloch
				Spirit Lake
				Don Norton
				Cedar Rapids
				Mike Echelberger
				Rockwell
				Raymond Benischek
				Oxford Junction
				Jack D. Wollam
				Lahota
				Larry Bendlin
				Spencer
				Terry DeGraaf
				Sanborn

Jiles Lowe caught this 9 lb., 8 oz. largemouth bass in someone's Lucas County farm pond.



Weight	Length	Where Caught	Date	Angler
PADDLEFISH				
61 lb.	67"	Mississippi River Clayton County	5-13	Eric Stirne Guttenberg
57 lb. 4 oz.	64"	Mississippi River Jackson County	3-2	Mike Spielman Dyersville
55 lb. 4 oz.	52"	Mississippi River Clayton County	5-28	Milo Lucas Guttenberg
52 lb. 6 oz.	61"	Mississippi River Jackson County	12-3	Wayne E. Kress Bellevue
50 lb. 3 oz.	61"	Mississippi River Jackson County	11-11	Steven E. Riffey Cedar Rapids
48 lb. 7 oz.	61 1/4"	Mississippi River Jackson County	6-11	Doug Griebel Bellevue
47 lb. 10 oz.	59 3/4"	Mississippi River Jackson County	3-4	Dean Beck Bellevue
46 lb. 8 oz.	62 1/2"	Mississippi River Clayton County	4-24	Maurice Glesne Elkader
44 lb. 8 oz.	59"	Mississippi River Jackson County	6-18	Ronald F. Quass Dubuque
40 lb. 12 oz.	59"	Mississippi River Muscatine County	5-14	Brian Sindt Montpelier
40 lb.	54 1/4"	Mississippi River Jackson County	3-13	Jim Schroeder Bellevue
39 lb. 12 oz.	57"	Mississippi River Muscatine County	6-9	Gregg Day Davenport
39 lb.	56 1/2"	Mississippi River Muscatine County	5-10	Russell Carrico Davenport
34 lb. 4 oz.	55"	Mississippi River Muscatine County	4-13	Brian Sindt Montpelier
33 lb. 6 oz.	58 1/2"	Mississippi River Muscatine County	4-27	Bruce Sindt Davenport
30 lb. 8 oz.	54 1/4"	Mississippi River Clayton County	4-27	Maurice H. Glesne Elkader
30 lb. 4 oz.	34 3/4"	Mississippi River Clayton County	4-26	Maurice Glesne Elkader
28 lb. 12 oz.	52 1/2"	Mississippi River Muscatine County	6-15	Gregg Day Davenport
28 lb.	55"	Mississippi River Jackson County	12-31	Robert Riffey Cedar Rapids
25 lb.	51 1/2"	Mississippi River Jackson County	3-2	Mel Hoffman Manchester
PERCH (Yellow)				
1 lb. 4 oz.	14 1/4"	West Okoboji Dickinson County	10-16	Dick Johann Madrid
1 lb. 1 oz.	13 1/2"	West Okoboji Dickinson County	1-1	George Henry Spirit Lake
1 lb.	13"	East Okoboji Dickinson County	1-27	Alvin Akin Spirit Lake



Weight	Length	Where Caught	Date	Angler
1 lb.	13"	West Okoboji Dickinson County	5-20	Orville Belken Spencer
1 lb.	11 1/4"	West Okoboji Dickinson County	1-20	Delmer Gonder Spirit Lake
1 lb.	12 1/2"	West Okoboji Dickinson County	12-17	Perry Parks Milford
1 lb.	12"	West Okoboji Dickinson County	1-1	Dan Williams Milford
SAUGER				
5 lb. 7 oz.	24 1/2"	Missouri River Harrison County	3-31	Jeff Roetman Odebolt
4 lb. 13 oz.	22 1/2"	Mississippi River Jackson County	4-18	Lyle Leibert Clinton
4 lb. 1 oz.	23"	Mississippi River Clinton County	10-27	Carl Slapnicka Camanche
4 lb.	20 1/2"	Mississippi River Clayton County	3-18	Steve Miller Cedar Rapids
3 lb. 4 oz.	21"	Mississippi River Allamakee County	10-25	Carl F. Lilienthal Waterloo
3 lb. 4 oz.	19"	Mississippi River Clayton County	3-26	Douglas D. Riis Marion
3 lb. 2 oz.	23"	Mississippi River Clayton County	5-1	Rick Ziegenfuss Waterloo
2 lb. 12 oz.	20"	Mississippi River Allamakee County	5-17	Maurice H. Glesne Elkader
2 lb. 12 oz.	19"	Mississippi River Allamakee County	5-20	Bryan Timmerman Waterloo
2 lb. 10 oz.	19"	Mississippi River Clayton County	6-22	Ruth Wilson LaPorte City
SHEEPSHEAD				
22 lb. 15 oz.	34"	Mississippi River Allamakee County	5-8	Clifford Mortland Cedar Rapids
15 lb.	29"	Mississippi River Allamakee County	5-21	Robert G. Hansen Cedar Falls
STURGEON (Rock or Lake)				
*40 lb.	58 1/2"	Mississippi River Muscatine County	4-20	Martin Cabbage Muscatine
STURGEON (Pallid)				
*18 lb. 8 oz.	50"	Missouri River Woodbury County	5-7	Zeke D. Castro Sioux City
SUNFISH (All Others)				
*1 lb. 7 oz.	10 1/4"	Farm Pond Des Moines County	6-12	Delbert Cover Mediapolis
1 lb. 3 1/2 oz.	10 1/4"	Springbrook Lake Guthrie County	6-19	John Bylund Bagley
SUCKER (Miscellaneous)				
*6 lb. 9 1/2 oz.	24 1/2"	Yellow River Allamakee County	4-6	Dwain A. Nading McGregor
5 lb. 3 oz.	24"	Upper Iowa River Allamakee County	3-5	William Lucas Cresco
4 lb. 14 oz.	28 1/2"	Upper Iowa River Winneshiek County	4-9	Collin Pfeiler Dubuque
4 lb. 13 oz.	22"	Upper Iowa River Allamakee County	5-1	Lloyd M. Newton Waukon
4 lb. 5 oz.	22 1/2"	Upper Iowa River Winneshiek County	9-10	Ken Bolson, Jr. Decorah
TROUT (Brown)				
11 lb. 4 oz.	27"	Bear Creek Fayette County	4-15	David W. Eck Cedar Falls
10 lb. 12 1/2 oz.	30"	Swiss Valley Dubuque County	4-29	James H. Henkel Dubuque
10 lb. 1 oz.	26"	Bear Creek Clayton County	5-1	Roger Zimmerman Cedar Falls
7 lb. 8 oz.	24"	Bloody Run Clayton County	5-14	Joseph C. Benhoff Evansdale
7 lb. 8 oz.	25 1/2"	Richmond Springs Delaware County	6-30	Jerry Vogel Cedar Rapids
7 lb.	25"	Silver Creek Allamakee County	4-27	Douglas A. Blunt Charles City
6 lb. 14 oz.	24"	Village Creek Allamakee County	5-8	Emmet Nolting Waukon
6 lb. 12 oz.	25 1/4"	Brush Creek Jackson County	9-17	Jackie L. Fish Davenport
6 lb. 11 1/4 oz.	22 1/4"	Buck Creek Clayton County	5-1	George A. Benn Dubuque
5 lb. 9 1/2 oz.	24 1/2"	Spring Branch Delaware County	11-20	Don Norton Cedar Rapids
5 lb. 3 oz.	23 1/2"	Big Mill Creek Jackson County	3-26	Andy Hollenback, Jr. Farley
5 lb.	22"	Paint Creek Allamakee County	4-2	Gary Charipar Cedar Rapids

Jack Easton of Clear Lake and his 35 lb., 8 oz. buffalo.

*New State Record



Elmer Beck, Clear Lake



C. S. Stuber, Ottumwa.



George Worrall, Atlantic, and Waymon Caron and sons from Omaha.



Jon Parks, Milford and Dick Johann, Madrid.

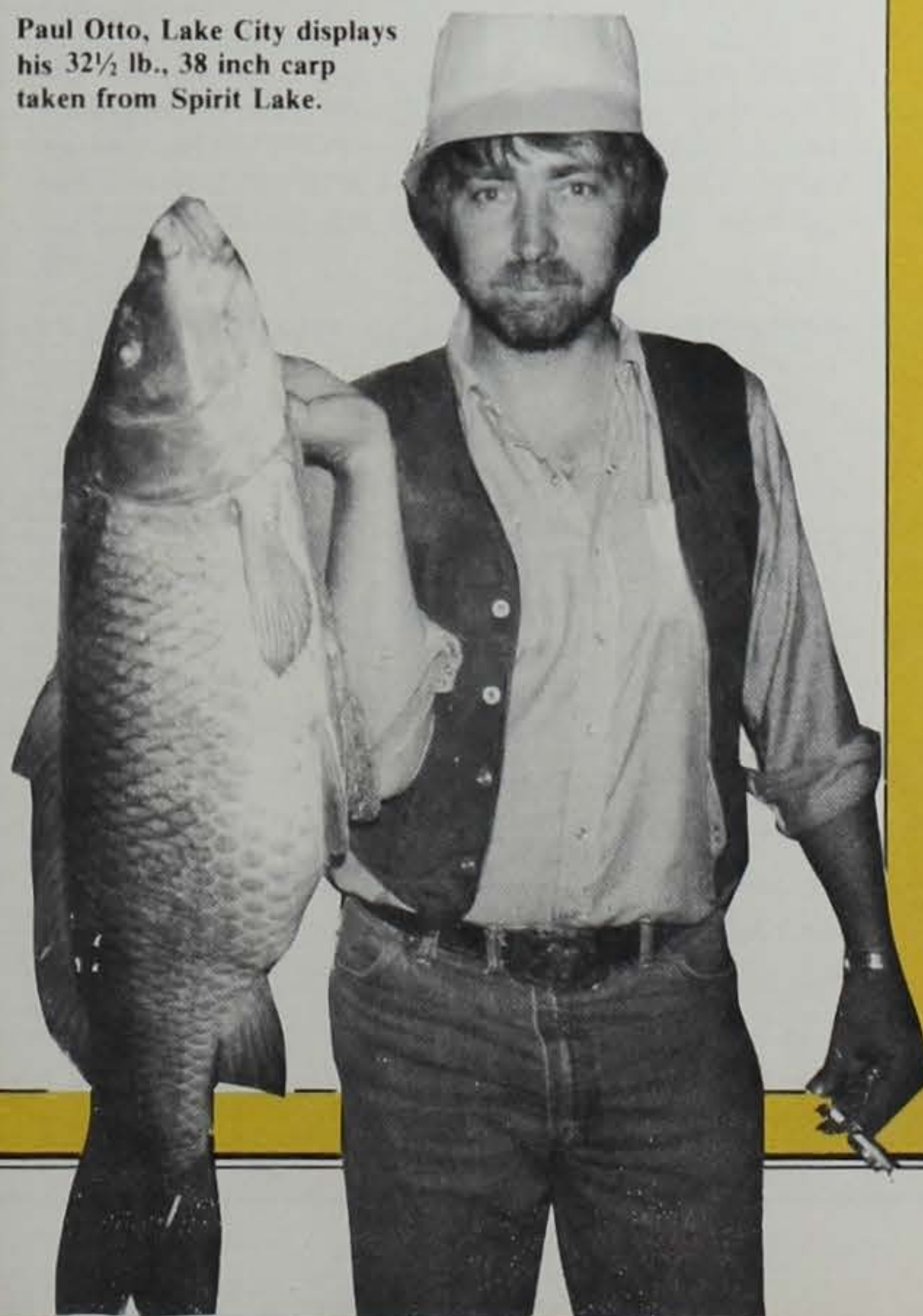


Allen Forsberg, Albert City and Clifford Mortland, Cedar Rapids.

Weight	Length	Where Caught	Date	Angler
4 lb. 12 oz.	21 1/2"	Joy Springs	8-27	Chuck Greth
4 lb. 10 oz.	21"	Clayton County	4-16	West Des Moines
3 lb. 14 oz.	21"	Waterloo Creek	5-15	Steven L. Erickson
3 lb. 12 oz.	19"	Allamakee County	8-27	Minnetonka, Minnesota
3 lb. 2 1/2 oz.	18"	Turtle Creek	5-14	Larry Porter
3 lb. 1 oz.	18"	Mitchell County	3-19	Northwood
		Joy Springs		Kenneth Newell
		Clayton County		West Des Moines
		Village Creek		Bryan Timmerman
		Allamakee County		Waterloo
		Silver Creek		Doug Blunt
		Allamakee County		Charles City
TROUT (Rainbow)				
*15 lb. 8 oz.	30 1/2"	Turkey River	8-27	Chuck Greth
11 lb. 6 oz.	27 1/2"	Clayton County	4-7	West Des Moines
11 lb.	28 1/2"	Hickory Creek	5-13	Jeff E. Szabo
10 lb. 12 1/2 oz.	30 1/4"	Clayton County	4-6	Postville
10 lb. 11 oz.	28"	French Creek	4-1	Robert L. Snyder
10 lb. 10 oz.	28"	Allamakee County	4-15	Denver
10 lb.	28 1/2"	Fountain Spring Creek	3-26	Michael Everts
10 lb.	28"	Delaware County	7-5	Gilman
9 lb. 15 oz.	27 1/4"	Bloody Run Creek	5-21	Frank Haylick
9 lb. 6 oz.	28"	Clayton County	4-8	Monona
7 lb. 10 oz.	25"	North Bear Creek	5-3	Duane E. Perrin
7 lb. 4 oz.	24"	Winneshiek County	5-26	Waterloo
7 lb. 2 oz.	24"	Otter Creek	9-10	Maurice Dooly
6 lb. 8 oz.	25"	Fayette County	6-14	Ionia
6 lb. 2 oz.	24 1/2"	Richmond Springs	5-7	Bob Tuve
6 lb.	24"	Delaware County	5-6	Waterloo
5 lb. 8 oz.	23 1/4"	North Bear	6-23	Nicky Poshusta
5 lb. 7 oz.	22 1/2"	Winneshiek County	4-16	Spillville
5 lb. 5 oz.	21"	Buck Creek	5-7	Steve Pelley
		Clayton County		Marion
		Big Mill Creek		Tom Barnet
		Jackson County		Davenport
		North Bear Creek		Tom Ahrens
		Winneshiek County		Waterloo
		Richmond Springs		Bob Juracek
		Delaware County		Cedar Rapids
		Turkey River		Gerry Ommen
		Clayton County		Elkader
		Little Mill Creek		Michael Hayes
		Jackson County		Bettendorf
		Seeber Spring		Dave E. Jensen
		Winneshiek County		Mt. Vernon
		Ensign Hollow		Dennis Hoepfner
		Clayton County		Waterloo
		Patterson Creek		Douglas A. Blunt
		Allamakee County		Charles City
		Ensign Hollow		Wayne Martin
		Clayton County		Cedar Rapids

*New State Record

Paul Otto, Lake City displays his 32 1/2 lb., 38 inch carp taken from Spirit Lake.



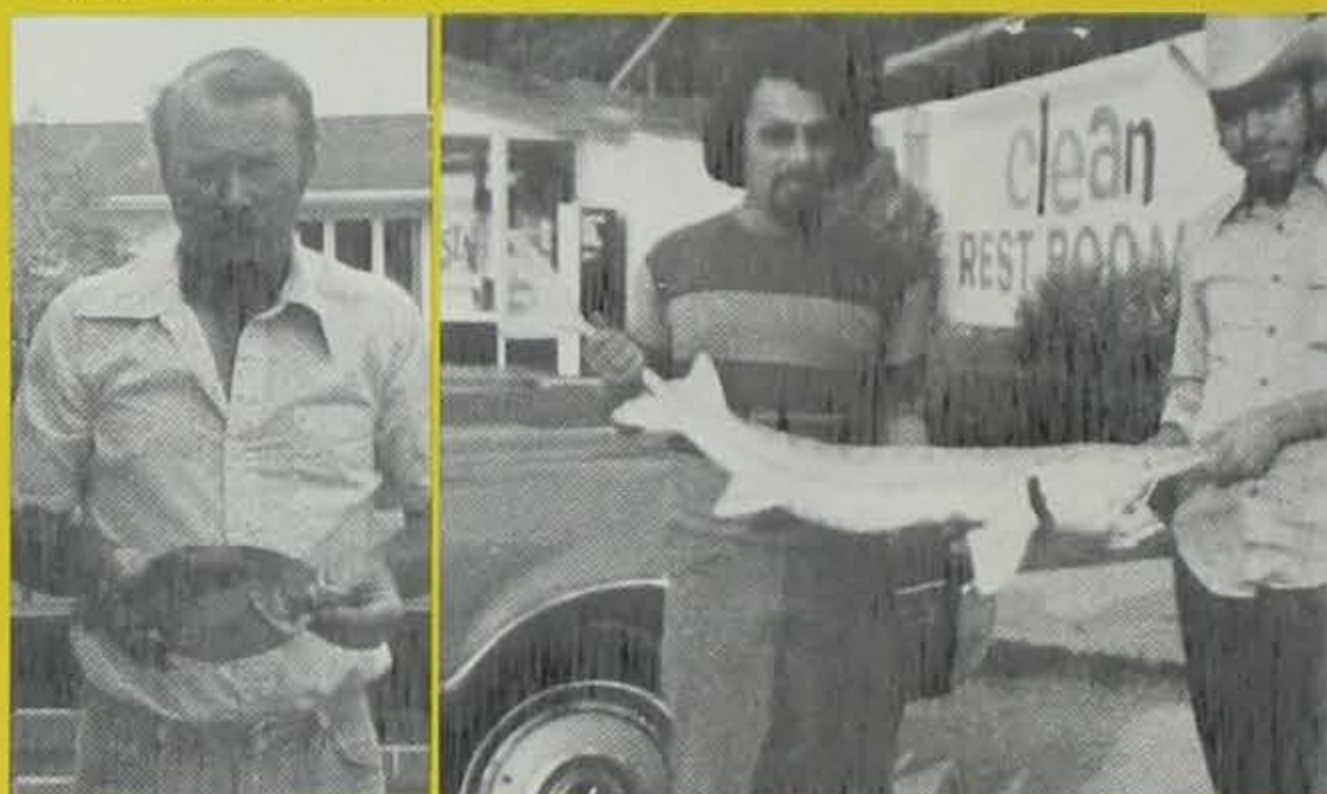
Weight	Length	Where Caught	Date	Angler
5 lb. 2 oz.	21½"	Otter Creek Fayette County	6-5	Rick Gardner Sumner
4 lb. 8 oz.	20"	Coldwater Creek Winneshiek County	5-1	David Malek Cresco
4 lb. 5 oz.	21"	Trout River Winneshiek County	4-29	Lester Carlsburg Ames
4 lb. 2 oz.	21½"	Bailey's Ford Delaware County	10-28	Charles R. Kuach Cedar Rapids
3 lb. 8 oz.	19"	Joy Springs Clayton County	6-1	Vernon Dopp Winthrop
3 lb. 8 oz.	22"	Brush Creek Jackson County	10-22	Kent Klein, Jr. Davenport
3 lb. 4½ oz.	18"	Swiss Valley Dubuque County	4-30	Verne Miller Dubuque
3 lb. 4 oz.	19¼"	Ensign Hollow Clayton County	6-2	Dennis Hoeppner Waterloo
3 lb. 4 oz.	18½"	Turkey River Clayton County	8-27	Kenneth Newell West Des Moines
3 lb. 4 oz.	19"	Canoe Creek Winneshiek County	5-21	Phyllis Reeder Northwood

WALLEYE

11 lb. 11 oz.	33"	Shell Rock River Butler County	4-8	Joseph J. Wisner Waterloo
11 lb. 4 oz.	-	West Okoboji Dickinson County	-	LeRoy Morton Milford
11 lb. 2 oz.	30"	West Okoboji Dickinson County	12-19	Tim Dammann Little Rock
10 lb. 10 oz.	29½"	West Okoboji Dickinson County	11-15	John Kamies, Jr. Sheldon
10 lb. 10 oz.	29"	Lost Island Lake Palo Alto County	1-9	John Stullen Dickens
10 lb. 8 oz.	29½"	Clear Lake Cerro Gordo County	11-30	John G. Baago Clear Lake
10 lb. 8 oz.	27"	West Okoboji Dickinson County	12-26	Doug Stange Sibley
10 lb. 3 oz.	30"	Cedar River Black Hawk County	10-11	Dennis Bigelow Cedar Falls
10 lb.	27½"	Mississippi River Allamakee County	4-17	Norm Leeman Postville
9 lb. 13 oz.	31¼"	Wapsipinicon River Buchanan County	3-26	Bill Dewald Independence
9 lb. 12 oz.	27½"	West Okoboji Dickinson County	11-29	"Cap" Kennedy Arnolds Park
9 lb. 12 oz.	28"	Lost Island Lake Palo Alto County	2-26	Frank Tielbur Spencer
9 lb. 6 oz.	28½"	West Okoboji Dickinson County	9-5	Clinton Hickel Spirit Lake
9 lb. 6 oz.	28½"	West Okoboji Dickinson County	1-5	Tom Reason Arnolds Park
9 lb. 4 oz.	28½"	Mississippi River Clayton County	3-31	Barney Langel Luxemburg
9 lb. 2 oz.	30"	North Twin Lake Calhoun County	4-13	John F. Dalton Manson
9 lb. 2 oz.	28½"	West Okoboji Dickinson County	2-8	Larry Eckman Arnolds Park
9 lb. 2 oz.	29"	West Okoboji Dickinson County	11-11	Doug Stange Sibley
9 lb. 2 oz.	29"	Lost Island Lake Palo Alto County	3-27	Rich Wolthuis Milford
9 lb. 1 oz.	27"	Spirit Lake Dickinson County	9-24	Doug Stange Sibley
9 lb.	29"	Wapsipinicon River Buchanan County	9-1	Clifford F. Brimmer Independence
9 lb.	27½"	Cedar River Chickasaw County	10-27	Lloyd Gnagy Charles City
9 lb.	28"	West Okoboji Dickinson County	1-19	Tom Reason Arnolds Park
9 lb.	29"	West Okoboji Dickinson County	11-11	Doug Stange Sibley
8 lb. 14 oz.	28½"	Lost Island Lake Palo Alto County	4-18	Alvin Akin Spirit Lake
8 lb. 14 oz.	27½"	Clear Lake Cerro Gordo County	1-3	Jack Hepp Clear Lake
8 lb. 12 oz.	27"	West Okoboji Dickinson County	2-8	Dennis Roberts Dickens
8 lb. 10 oz.	28"	Lost Island Lake Palo Alto County	3-13	Don Reason Arnolds Park
8 lb. 9 oz.	28"	West Okoboji Dickinson County	11-6	Bob Bendlin Spencer
8 lb. 9 oz.	28¼"	West Okoboji Dickinson County	1-13	L. J. Hackett Arnolds Park
8 lb. 8 oz.	28¼"	Spirit Lake Dickinson County	10-4	Doug Stange Sibley
8 lb. 8 oz.	27"	West Okoboji Dickinson County	12-25	Dennis D. Mammenga Little Rock
8 lb. 8 oz.	26½"	West Okoboji Dickinson County	12-16	Bill Alexander Milford
8 lb. 7 oz.	28½"	West Okoboji Dickinson County	8-16	Craig Jones Linn Grove
8 lb. 4 oz.	29"	West Okoboji Dickinson County	1-21	Dewey Olson Arnolds Park
8 lb. 4 oz.	27¼"	Mississippi River Clayton County	8-21	Glenn Primmer Central City
8 lb. 4 oz.	29"	Lost Island Lake Palo Alto County	1-14	Frank Tielbur Spencer
8 lb. 3 oz.	26¼"	Lost Island Lake Palo Alto County	3-31	Alvin Akin Spirit Lake
8 lb. 2 oz.	27"	Spirit Lake Dickinson County	2-18	Ike Adveon Sibley
8 lb. 2 oz.	29"	West Okoboji Dickinson County	11-1	Roland Tedwick Sheldon
8 lb.	28"	West Okoboji Dickinson County	10-23	Robert Bendlin Spencer
8 lb.	26¼"	Des Moines River Wapello County	9-30	Dann Thomas Ottumwa



Martin Cabbage, Muscatine.



Delbert Cover, Mediapolis, and Zeke Castro (in striped shirt), Sioux City.



Dwain Nading, McGregor, and David Eck, Cedar Falls.



Chuck Greth, West Des Moines, and Joseph Wisner, Waterloo.

IOWA ALL-TIME RECORD FISH

Weight	Length	County Where Caught	Date	Angler
BASS (Largemouth)				
10 lb. 5 oz.	24 1/4"	Farm Pond Lee County	8-70	Paul Burgund Fort Madison
BASS (Smallmouth)				
6 lb. 7 oz.	22"	Upper Iowa River Winnebago County	7-76	Jimmie McAndrews Decorah
BASS (Rock)				
11 lb. 8 oz.	10 1/2"	Mississippi River Dubuque County	6-73	Jim Driscoll Dubuque
BASS (White)				
3 lb. 14 oz.	20"	West Okoboji Dickinson County	5-72	Bill Born Milford
BASS (Yellow)				
1 lb. 3 oz.	12 1/4"	Clear Lake Cerro Gordo County	4-77	Elmer Beck Clear Lake
BLUEGILL				
2 lb. 5 oz.	11 1/4"	Farm Pond Jasper County	4-76	Mary L. Pool Prairie City
BULLHEAD				
4 lb. 8 oz.	17 1/4"	Farm Pond Taylor County	4-66	Dennis Karas Massena
4 lb. 8 oz.	22 1/2"	Boyer River Harrison County	8-71	Ralph Cooney Woodbine
BUFFALO				
43 lb. 8 oz.	40"	West Okoboji Dickinson County	4-74	James D. Grim Arnolds Park
CARP				
50 lb.	44"	Glenwood Lake Mills County	5-69	Fred Hougland Glenwood
CATFISH (Channel)				
30 lb. 4 oz.	39"	Viking Lake Montgomery County	8-74	Glenn Harms Shenandoah
CATFISH (Flathead)				
62 lb.	46"	Iowa River Johnson County	7-65	Roger Fairchild Coralville
CRAPPIE				
4 lb. 1 oz.	19 1/4"	Farm Pond Tama County	5-69	John Lenhart Tama
MUSKELLUNGE				
38 lb.	52 1/2"	West Okoboji Dickinson County	9-75	Ed Feldhacker Spencer
NORTHERN PIKE				
25 lb. 5 oz.	45"	West Okoboji Dickinson County	2-77	Allen Forsberg Albert City
PADDLEFISH				
83 lb.	66 1/4"	DeSoto Bend Harrison County	5-73	Lawrence J. Bonham Missouri Valley
PERCH (Yellow)				
1 lb. 15 oz.	14 1/4"	Spirit Lake Dickinson County	9-74	John Walz Estherville
SAUGER				
6 lb. 8 oz.	25"	Missouri River Woodbury County	10-76	Mrs. William Buser Sloan
SHEEPSHEAD				
46 lb.	38 1/2"	Spirit Lake Dickinson County	10-62	R. F. Farran Clarion
STURGEON (Shovelnose)				
12 lb.	33"	Des Moines River Van Buren County	4-74	Randy Hemm Douds
SUCKERS (Miscellaneous)				
6 lb. 9 1/2 oz.	24 1/2"	Yellow River Allamakee County	4-77	Dwain A. Nading McGregor
SUNFISH (Miscellaneous)				
1 lb. 7 oz.	10 1/4"	Farm Pond Des Moines County	6-77	Delbert Cover Mediapolis
TROUT (Brook)				
1 lb. 14 oz.	16"	Sny Magill Creek Clayton County	2-75	John Delleman Davenport
TROUT (Brown)				
12 lb. 14 1/2"	28"	Elk Creek Delaware County	11-66	Billy Lee Marion
TROUT (Rainbow)				
15 lb. 8 oz.	30 1/2"	Turkey River Clayton County	8-77	Chuck Greth West Des Moines
WALLEYE				
14 lb. 2 oz.	31 1/2"	Spirit Lake Dickinson County	10-68	Herbert Aldridge Spirit Lake

How To Enter 1978 Big Fish

Despite the great success of fishermen in 1977, no doubt a few finicky old leviathans still abide in Iowa waters. If one should find his way to your stringer, here is what to do:

Any species of fish taken by hook and line and caught in state or boundary waters is eligible. There are, however, minimum qualifying weight limitations as listed below:

Bass, largemouth 7 lbs.	Muskellunge 15 lbs.
Bass, rock 1 lb.	Northern pike 10 lbs.
Bass, smallmouth 4 lbs.	Paddlefish 25 lbs.
Bass, white 2 1/2 lbs.	Perch, yellow 1 lb.
Bass, yellow 3/4 lb.	Sauger 2 1/2 lbs.
Bluegill 1 lb.	Sheepshead 15 lbs.
Buffalo 20 lbs.	Sturgeon, shovelnose 3 lbs.
Bullhead 2 1/2 lbs.	Sucker (Misc.) 4 lbs.
Carp 25 lbs.	Sunfish (Misc.) 1 lb.
Catfish, blue 20 lbs.	Trout, brook 1 lb.
Catfish, channel 15 lbs.	Trout, brown 3 lbs.
Catfish, flathead 20 lbs.	Trout, rainbow 3 lbs.
Crappie 2 lbs.	Walleye 8 lbs.

Any 1978 entry must be weighed to the nearest ounce on scales legal for trade. The weighing must be witnessed by two persons.

If there is some doubt in species identification, the angler should contact the nearest Iowa Conservation Commission personnel for verification. Any new all-time record fish must be examined and verified by Iowa Conservation Commission personnel.

The angler must fill out an official entry blank or facsimile and send it and a photo or color slide of the angler and the fish to Official Big Fish Records, Iowa Conservation Commission, Wallace State Office Building, Des Moines, Iowa 50319, by January 1, 1979. The entry blank includes the name and address, the species of fish, date caught, body of water, county, total length, bait or lure used, and the witnesses' signatures and addresses. Official entry blanks will be included in the 1978 Fishing Laws Synopsis brochure which will be available to the public wherever fishing licenses are sold. Any fish that surpasses the official state record will be publicized through the Conservation Commission's weekly news release. All state records and the 1978 record fish will be published in the March, 1979, issue of the *IOWA CONSERVATIONIST*. Iowa Angling Award certificates and shoulder patches will also be sent to qualifying anglers.

ENTRY BLANK FOR IOWA RECORD FISH

NAME _____

STREET/RFD _____

CITY _____ ZIP _____

SPECIES _____ DATE _____

COUNTY WHERE CAUGHT _____

LAKE OR STREAM _____

TOTAL LENGTH _____ WEIGHT _____ lb. _____ oz.

BAIT OR LURE USED _____

WITNESSES

NAME _____

ADDRESS _____

NAME _____

ADDRESS _____

(Entries of fish caught during the year must be sent to the Iowa Conservation Commission, Wallace State Office Building, Des Moines, Iowa 50319 by January 1, 1979.)

Decatur-Wayne Quail Study Area

by **Ronnie R. George**

WILDLIFE RESEARCH BIOLOGIST

Photos by the Author

FOR MORE THAN 40 years, wildlife investigators have studied the ups and downs of Iowa's quail populations on a 7,713 acre block of land in south-central Iowa known as the Decatur-Wayne Quail Research Area. This privately-owned area, located only eight miles north of the Iowa-Missouri border in Decatur and Wayne Counties, has been the focal point for intensive quail studies ever since the Iowa Cooperative Wildlife Research Unit at Iowa State College (now University) began their first quail study there in the fall of 1935.

The objectives of that initial project were to determine the seasonal habitat requirements of the bobwhite and to formulate management plans that were compatible with agricultural practices. Earl Sanders, the first of the wildlife students to live and work on the area, tackled his project with the classical naturalist's drive to observe and record everything that was happening in the

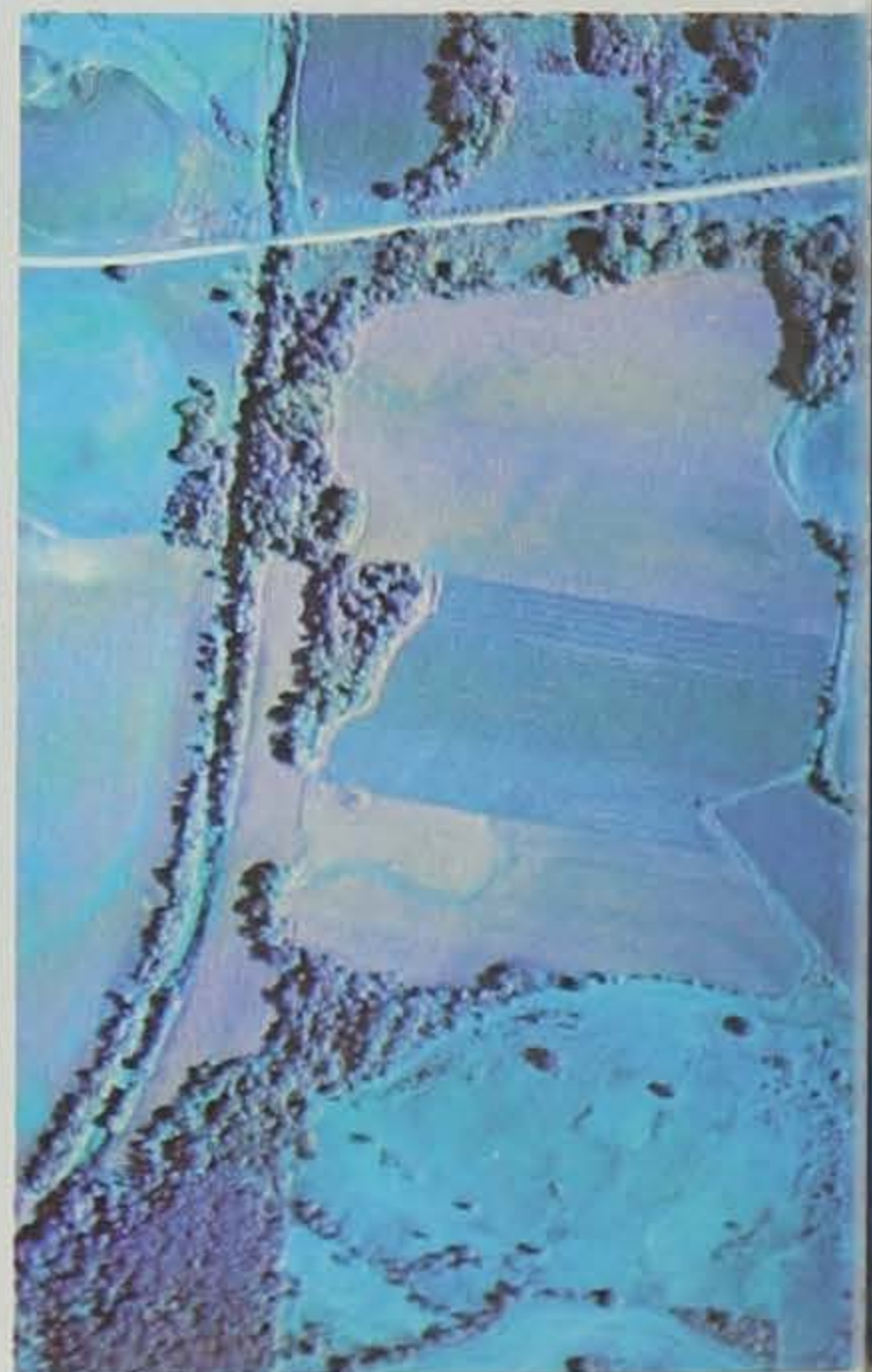
world around him. His records tell of everything from wild plum thickets to summer droughts and grasshoppers to whip-poor-wills.

During the course of his studies Mr. Sanders was apparently able to convince several local farmers that it would be a good idea to plant small fields of sorghum for both livestock forage and quail feed. Twenty-six fields ranging from one-fourth to eight acres in size were eventually planted on the study area, but a severe drought in the summer of 1936, coupled with a grasshopper epidemic, destroyed most of the crops and pasture on the study area, forcing farmers to harvest more of the sorghum for forage than they intended, leaving little grain for quail feed. Sanders, like many wildlifers who came after him, found that even the best of landowner intentions toward wildlife populations faded in the face of economic necessity.

Robert Moorman, who worked on the Decatur-Wayne Area in 1940, reported that the November 11 blizzard (Armistice Day Storm to you duck hunters) had some rather dramatic effects on quail movements and hunter success during the 1940 season. Observations on the study area showed that the 30 mph northwest wind and two inches of snow prompted considerable movement of coveys from light protective cover on hillsides into dense herbaceous stands and larger wooded tracts in the bottoms. By opening day, November 15th, the majority of the quail were holding fast in dense cover, sheltered from the wind. Only four percent of the birds known to be on the study area were harvested by hunters in 1940, and many hunters were convinced that disease or predation was responsible for the low number of quail they had seen. However, counts taken after the season closed in mid-December indicated thirty-seven out of forty-one early fall coveys could still be accounted for. Apparently, restrictive post-blizzard covey movements made birds difficult to locate, and the dense



Before (Sept. 1976)



cover in the bottoms afforded birds ample protection even if a covey could be located and scattered.

Robert Mangold's 1949-50 fall and winter-loss study indicated there was an inverse relationship between the size of the spring population and the rate of summer increase. In other words, when the spring population is low, the quail respond with a high rate of increase, while a higher spring population results in a lower rate of increase. This phenomenon had also been noted by Paul Errington in Wisconsin and Walter Overton in Virginia.

A 1951 publication by Edward Kozicky and George Hendrickson dealt with long-term population fluctuations in the study area. They indicated that spring and fall quail counts had been made intermittently from the fall of 1935 through the early 1950's. Kozicky and Hendrickson reported that the lowest count made during the period from 1935 to 1951 occurred in the spring of 1937 with only 90 birds on the entire study area (an even lower count of 62 birds was reported in the spring of 1975). An all-time high of 2,974 quail was reported in the fall of 1943.

Samuel Gooden's 1951-52 winter-behavior study revealed that quail coveys on the Decatur-Wayne Area moved as little as 340 feet per day during the most severe weather. During later periods of prolonged snow cover but relatively mild temperatures, coveys were observed to move more than a half mile daily while traveling to supplies of available food. Field evidence and trapping results indicated that four coveys readily exchanged birds with adjacent coveys during the winter months.

Roger Boehnke's 1952-54 winter-movement and covey-composition study confirmed the findings of previous southern Iowa studies (and the suspicions of quail hunters) that fall and winter distribution of coveys was dependent upon distribution of cornfields. Boehnke also found that quail inhabiting an area in consecutive years are seldom the same quail.

James Elder's 1953-55 study of bobwhite reproduction and whistling behavior on the Decatur-Wayne Area added to existing knowledge of nesting chronology and habitat utilization, and his observations on quail whistling behavior were later used in developing statewide July whistling routes.

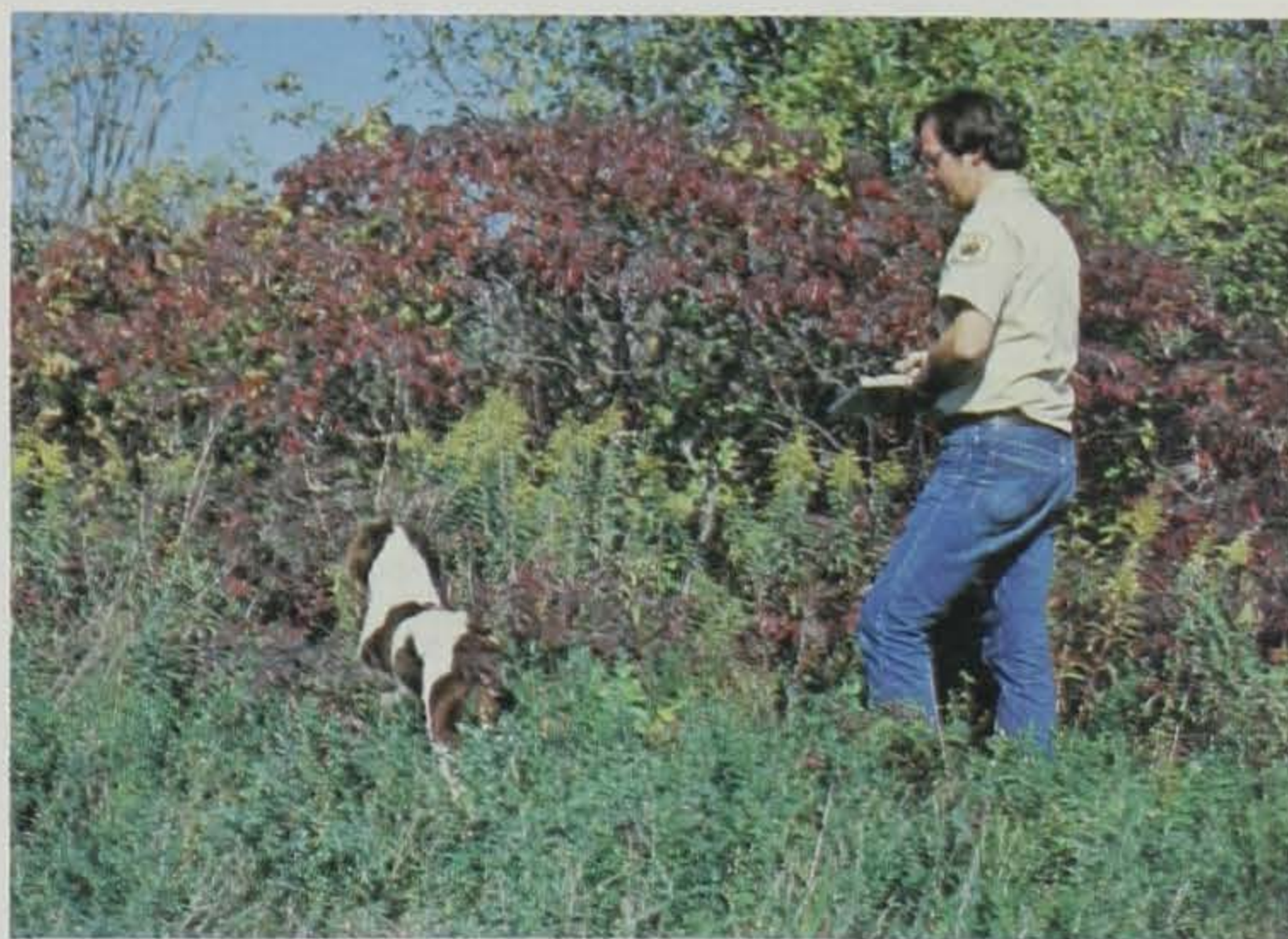
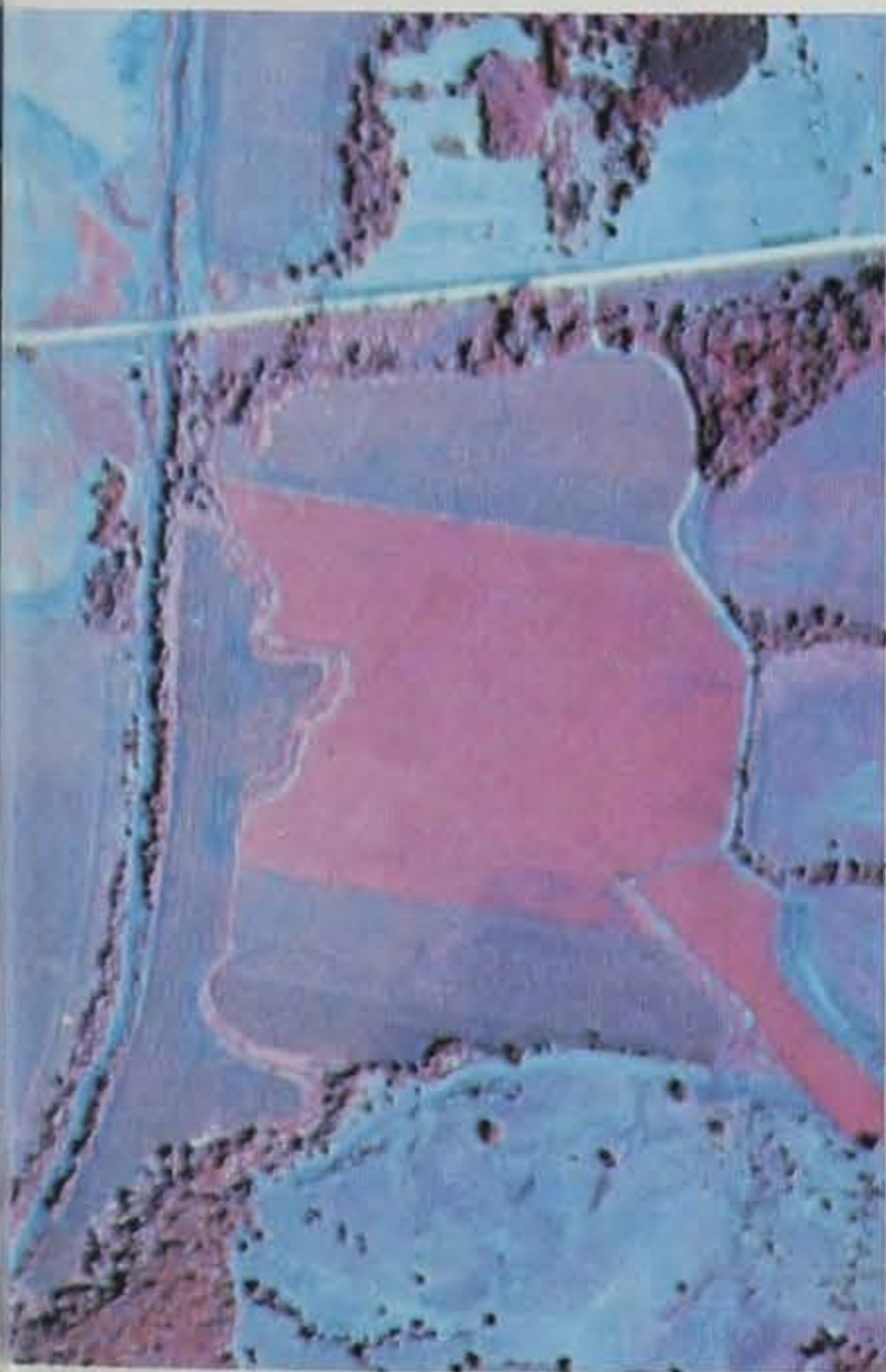
William Herke's 1956-57 summer cover-utilization study revealed that quail made little use of large cropfields in summer, but were generally found within 32 feet from cover edges. Trees, brush, weeds, and pastures were commonly used by quail during the summer months.

Following the completion of Herke's study, research activities on the Decatur-Wayne Area were generally curtailed until the mid-1960's when spring and fall flush counts were reinstated by Iowa Conservation Commission personnel. Other Commission activities on the study area have included: July whistling counts, hunter interviews, collection of wings for aging purposes, a mark and recapture study in 1976, and habitat inventories.

Habitat inventories, conducted with the aid of aerial photos, reveal that loss of woody cover has been a major problem for Iowa quail populations for a number of years. High land prices in the 1970's have certainly accelerated this process. Color infrared aerial photos on this page illustrate the dramatic loss of woody cover which occurred on one Decatur-Wayne farm in the fall of 1976. While similar habitat losses have occurred on many Iowa farms in recent years, projected grain surpluses for 1978 could make land clearing less profitable and lead to a short-term reduction in the loss of woody quail habitat. A more long-term solution to this problem might include tax incentives or direct cash subsidies to farmers who were willing to maintain wildlife habitat on their land.

In summary, there have been many wildlife research projects conducted on the Decatur-Wayne Quail Study Area in the past forty years, but I would like to stress that none of this research could have been completed without the cooperation and enthusiastic support of the local landowners, and I would like to take this opportunity to thank them for their contribution to our collective knowledge of quail biology and the entire field of wildlife conservation. □

After (Sept. 1977)



Wildlife Needs You



National
Wildlife Week
MARCH 19-25, 1978

JOIN AND SUPPORT THE
NATIONAL WILDLIFE FEDERATION
AND STATE AFFILIATES

CONSERVATIONally Speaking - - -

What are your thoughts and concerns about conservation in Iowa. What about wildlife habitat, local conservation problems, land use, or outdoor recreation needs in your area?

The "Iowa Conservationist" magazine is interested in what you think, your ideas, and what's on your mind.

As managing editor of the "Iowa Conservationist" I'd like to hear from you. Write to me. I would like to hear from someone in every county in Iowa, and *that means you!*

I'll try to answer your letters, but don't just limit your letter to asking questions; I want to know your ideas and opinions. And remember, if you don't write, your county may be missed.

Don't put it off! Just pick up a pencil or pen and start writing. Don't worry about what it looks like; the important thing is that I hear from you today.

Write to:

Robert Runge, Managing Editor
Iowa Conservationist Magazine
Iowa Conservation Commission
Wallace State Office Building
Des Moines, Iowa 50319

I'm anxious to get a letter from you! Write me, and do it now!

Warden's diary

by Rex Emerson

LAW ENFORCEMENT SUPERVISOR

WHEN I STOPPED by today to see the old man who lives down by the river, I was reminded that it would soon be time to go fishing. He was cleaning his fishing lures with the same effervescent tablets that he uses to clean his false teeth. He put some of the lures in a small bowl of water and dropped in two of the tablets. When the water quit fizzing and cleared, he rinsed them off and polished them with a soft cloth. It looked easy and did a pretty good job. I think I will try it.

The old man said his brother-in-law had read about this way of cleaning fishing lures. He looked over the top of his glasses and said his brother-in-law had a lot of class—mostly third class.

March is the month when a lot of people will start planning their fishing trips and sightseeing vacations for the warmer

months ahead. The big sport and vacation shows will have some of the top-notch public relations people from all over the United States and Canada attending, competing for your vacation time and dollar. When you get to thinking the grass looks greener across the fence; don't forget; it might be artificial turf.

Have you thought about taking your vacation in Iowa? What do you like to do on a vacation? Maybe you would like to camp in the beautiful wooded outdoors by a lake or stream. Perhaps you prefer a resort on a lake shore, or maybe a luxurious motel or hotel with a swimming pool. How about a relaxing vacation on a working farm? We have all of that in Iowa.

Are you looking for a place to go fishing where you can actually catch fish? In 1978 Iowa is

the place. We have the most modern fish hatcheries in the United States. There are natural lakes, man-made lakes, warm water rivers, cold water streams, and don't forget the greatest river of all, the mighty Mississippi. Now, I don't like to brag, but if you want to catch trout, walleye, northern pike, crappies, sunfish, catfish, largemouth bass, smallmouth bass and many other kinds of fish, Iowa is the place. Some fellow at the sports show will give you the big pitch about how many lakes they have in his state. That sounds great, but again it's "artificial turf." You want to fish where there are a lot of fish per acre of water, and that is Iowa. I went to one of those states once where they had a lot of lakes. I asked an old fellow who was just docking his boat how the fishing was.

He said, "Fishin' is good, but the catchin' is poor."

So, get your license and get ready for a great fishing (and catching) vacation in Iowa.

Is a sightseeing vacation what you have in mind? The Indians say Iowa means "Beautiful Land." That should be enough said, but I would also like to list some of the places you should visit.

Amana Colonies; Manning Hotel at Keosauqua; Benton-

sport; Living History Farms; Effigy Mounds; Herbert Hoover National Historic Site; Covered Bridges in Madison County; the Old Shot Tower, Dubuque; Ft. Atkinson; Art Centers; Iowa State Fair; Tama Pow-wow; Old Settlers and Threshers Reunion; Rodeos; Tulip Festivals; Nordic Fest; Lake Okoboji (one of three blue water lakes in the world); Little Brown Church; Bily Brothers Clocks in Spillville; Grotto at West Bend. These are just to mention a few of the places to go in The Beautiful Land — Iowa. You will find some of the most beautiful state parks in the nation right here in Iowa. Most of them have camping, fishing, boating, swimming, picnicking and hiking trails if you are interested in a quiet relaxing type of vacation.

We also have lakes where you may show off your skill while being towed behind a speed boat on two slabs of wood, if that's your bag. "Everyone to his own taste," said the old lady as she kissed the cow.

If you would like more information on a vacation in Iowa, write to The Iowa Conservation Commission and to the Iowa Development Commission in Des Moines, Iowa. They both have interesting vacation information.

CLASSROOM CORNER

by Robert Rye

ADMINISTRATOR, CONSERVATION EDUCATION CENTER

HE HAS an uncommon love for worms, and once his 36 teeth make contact, a worm has had it. The eastern mole is at home in any soil east of the Rockies that supports earthworms. He is found in loose soils of farms, gardens, cemeteries, pastures, lawns, and golf courses. The presence of night crawlers will lure moles into even quite damp soils.

In mid-April, after a 42-day pregnancy, the tiny mole babies are born—pink, hairless, and helpless. Their eyes are just specks of pigment under the skin, their ears only minute openings without any sign of outer ear. It seems hardly possible that a month later each of these bits of protoplasm are full-grown moles about to seek their fortunes.

As adults, they possess fur with a silvery sheen, slate to brown or golden in color. They weigh one to five ounces and are five and a half to eight inches long, including their tail which is naked and between one and one and a half inches in length. The feet and nostrils are also bare. They seem to lack a neck—the apparently earless and eyeless wedge-shaped head seems to grow directly from powerful shoulders.

The hind legs are strong and used chiefly to propel the mole forward through the tunnel the forefeet are constantly carving. The front feet are like paddles—big, heavily-clawed, and with palms facing to the side,

which makes for good locomotion in the soil when it is loose and easily pushed out of the way.

The mole's nest, lined with grass and leaves, is some 18 to 24 inches below the surface. A main passageway leads from the nest to a series of tunnels in all directions. Most of these tunnels lead in turn to hunting grounds.

Part of the reason the mole causes problems is that he may "swim" up a row in the garden feasting on cut-worms, and unintentionally shear off just below ground-level young lettuce or peas with his tunnel-making front paddles. He has no interest in the tender, dying plants for they are not included in his menu. Moles appear to be most "satisfied" when going their solitary way through the soil, seeking good things to eat.

The mole doesn't spend time in colonies. There is no gathering and storing food away for the future. With moles, the time of need for food is always now.

Only when a mole finishes a huge meal (like a giant night crawler) is it time to rest. He can't hold any more, so he sleeps briefly. He awakens and at once is on the go with just one desire: more food. This constant search for food goes on around the clock and throughout the year.

In autumn and winter he will stop using surface tunnels and dig deeper ones below the froz-

en surface. While these are being constructed, the tell-tale mole hills appear.

A young mole will eat his weight in worms, grubs, centipedes, and millipedes each day. Should he be penned up even half a day, the mole would die of starvation.

The mole does not live a long life. As animals go, those that take a long time to reach maturity live many years. The mole takes only a month to mature and then seems to rush itself to death. For moles there is no night or day to rest, no winter hibernation, no summer estivation, only a short but intensely active life.

You do not have to go far afield for evidence of moles. All too often unsightly ridges appear in your garden or lawn. Here at the Center they often cross or, rather, tunnel through our walking trails.

Although they live near humans, they seldom are seen. This endows them with a rather mysterious quality for a child, who quite naturally wonders how an animal can dig up the ground while actually under it.

This mysterious quality is ours to captivate. In terms of the present trend of back-to-the-basics, children can now write what they see in poems or paragraphs. They can measure the area the tunnels use, or how far they expand in one outing. They can develop the history this interesting animal has over its short life.



LOOKIN' BACK

in the files of
the CONSERVATIONIST

Ten Years Ago

the *Conservationist* featured



a story on collecting maple syrup. March is the month when trees are tapped and the heavy sap flow associated with spring begins.

Maple syrup production is one of the oldest agricultural practices in this country.

The Commission also voiced its opposition to complete registration of firearms as proposed by several bills considered for submission to Congress.

Twenty Years Ago

the magazine took a look at



spring bullhead fishing. Even though many fishermen tend to look past the bullhead, it is big business in the great lakes

area each year. Hundreds of people from little youngsters up to old grandpa will line the banks of Little Spirit, Spirit, Lost Island, Clear and various other lakes to catch buckets full of these fish which have the body of a catfish and the I.Q. of a carp.

Thirty Years Ago

the *Conservationist* explained



a new program financed by the Fifty-second General Assembly which enabled the Commission to begin an extensive

statewide development program. The work done under its provisions was not part of the regular maintenance activities or expenses of the Commission. If meaningful expansion is to come in the future, the people of Iowa must be as willing in 1979-80 to pay the bill as they were in 1948. The legislature should once again be encouraged in this direction.

Don't delay . . .
SUBSCRIBE NOW! Make sure you get the IOWA CONSERVATIONIST at the lowest possible price.

IOWA CONSERVATION COMMISSION
WALLACE STATE OFFICE BUILDING
DES MOINES, IOWA 50319

PLEASE SEND ME THE IOWA CONSERVATIONIST. I ENCLOSE THE FOLLOWING AMOUNT FOR

☐ \$2.00 - 1 YEAR ☐ \$3.00 - 2 YEARS ☐ \$5.00 - 4 YEARS

MY NAME IS _____

MY STREET/RFD _____

MY CITY _____ STATE _____ ZIP _____



J. LANDSEER PER.