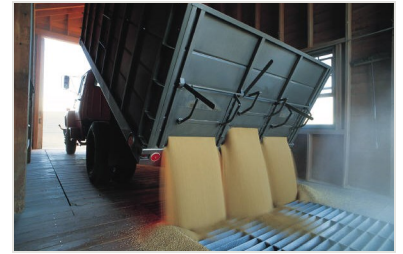


2015 IOWA INDUSTRY PROFILE

WHOLESALE TRADE

IOWA WORKFORCE DEVELOPMENT



Executive Summary

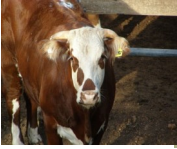
In 2014, the **wholesale trade** sector comprised 4.6 percent of all employment (including public and private sector) in Iowa, employing 69,057 workers and had an average annual wage of \$58,814. This wage was 38.3 percent higher than the statewide average of \$42,536 for all industries.

Sector employment has recovered the jobs lost since the great recession. As of 2013 the sector employed 69,295. This was an increase of 3,236 or 4.9 percent from 2010 when employment reached an eight year low at 66,059 jobs. However, in 2014, employment began to decline again and dropped 0.3 percent to 69,057.

Counties in the northern half of the state tend to have a higher percentage of employment in the wholesale sector due to grain elevators and ethanol production .

Men hold a strong majority of the jobs in this sector. In 2013 men made up 75.2 percent of the wholesale trade sector.





WHOLESALE TRADE IOWA INDUSTRY PROFILE

What is Wholesale Trade?

The Wholesale Trade sector comprises establishments engaged in wholesaling merchandise, generally without transformation, and rendering services incidental to the sale of merchandise. The merchandise described in this sector includes the outputs of agriculture, mining, manufacturing, and certain information industries, such as publishing.

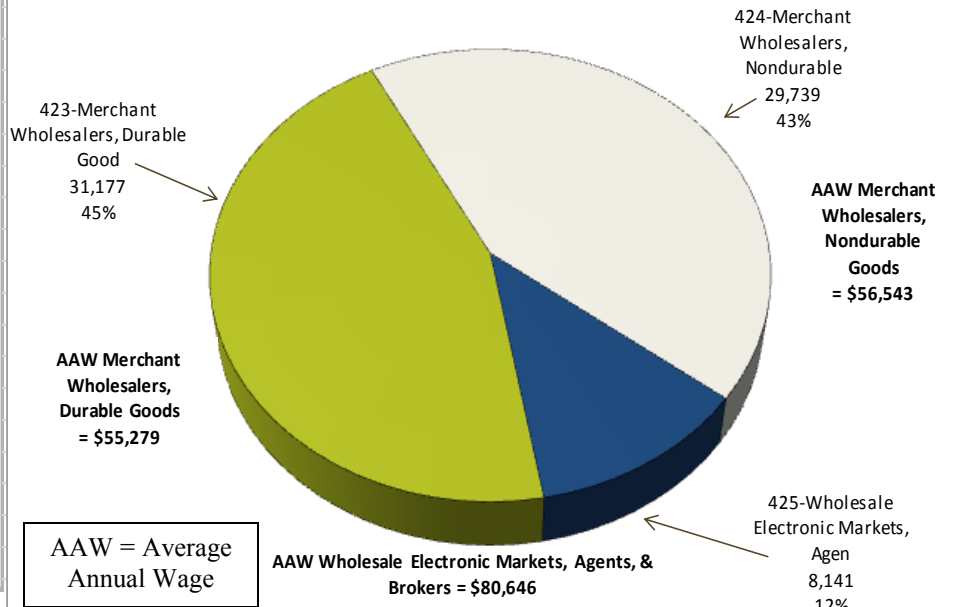
The wholesaling process is an intermediate step in the distribution of merchandise. Wholesalers are organized to sell or arrange the purchase or sale of (a) goods for resale (i.e., goods sold to other wholesalers or retailers), (b) capital or durable nonconsumer goods, and (c) raw and intermediate materials and supplies used in production.

Source: www.census.gov/naics

2014 Industry Breakout by Employment in Iowa

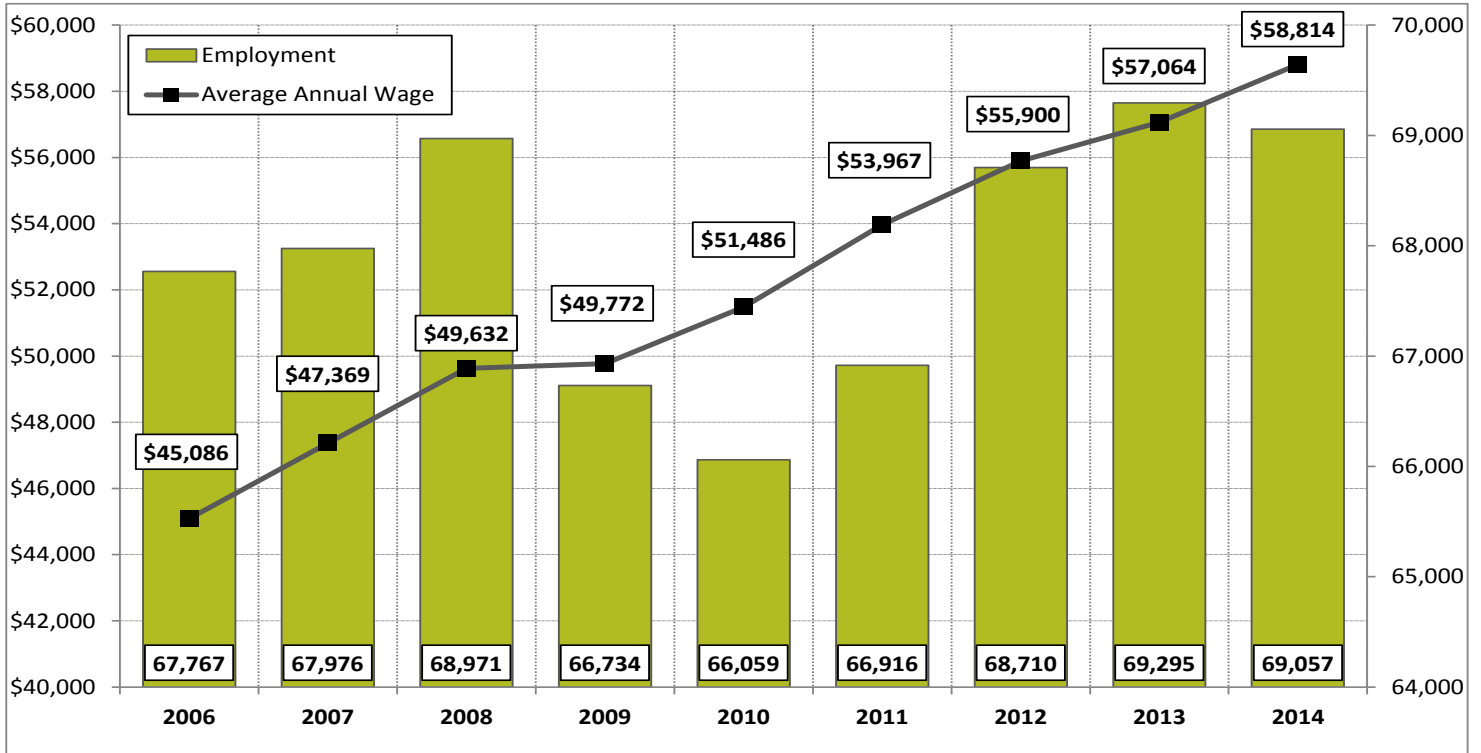
Wholesale Trade NAICS Industry Coding

*Percentage Employed by Sub-Sector



Source: Quarterly Census of Employment and Wages (QCEW), Bureau of Labor Statistics

2006-2014 Employment in Wholesale Trade in Iowa



Source: Quarterly Census of Employment and Wages (QCEW), Bureau of Labor Statistics

WHOLESALE TRADE IOWA INDUSTRY PROFILE



Examples of Major Wholesale Trade Industry Employers

Company Name	Industry
CNH America	Machinery, Equipment, & Supplies
Electrolux Home Products	Electrical and Electronic Goods
Henniges Automotive	Motor Vehicle & Motor Vehicle Parts & Supplies
Hy-Vee Distribution Center	Grocery and Related Products
Lennox Industries	Hardware, Plumbing, & Heating Equipment & Supplies
Quaker Oats Co	Grocery and Related Products
Target Distribution Center	Miscellaneous Durable Goods
Van Diest Supply Co	Chemical & Allied Products
Viking Pump Inc.	Machinery, Equipment, & Supplies
Walmart Distribution Center	Miscellaneous Durable Goods

Employers

In 2014, there were 7,587 industry **wholesale trade** locations across Iowa. **Durable good wholesalers** have the most locations in Iowa with 2,672. **Electronic market and agent broker wholesalers** was a close second with 2,287 locations and lastly, **Nondurable wholesalers** had 2,628 establishments statewide respectively.

The employers listed to the left are classified in the sub-sector that reflects their primary industry, although each company may be engaged in other economic activities.

Source: Infogroup USA

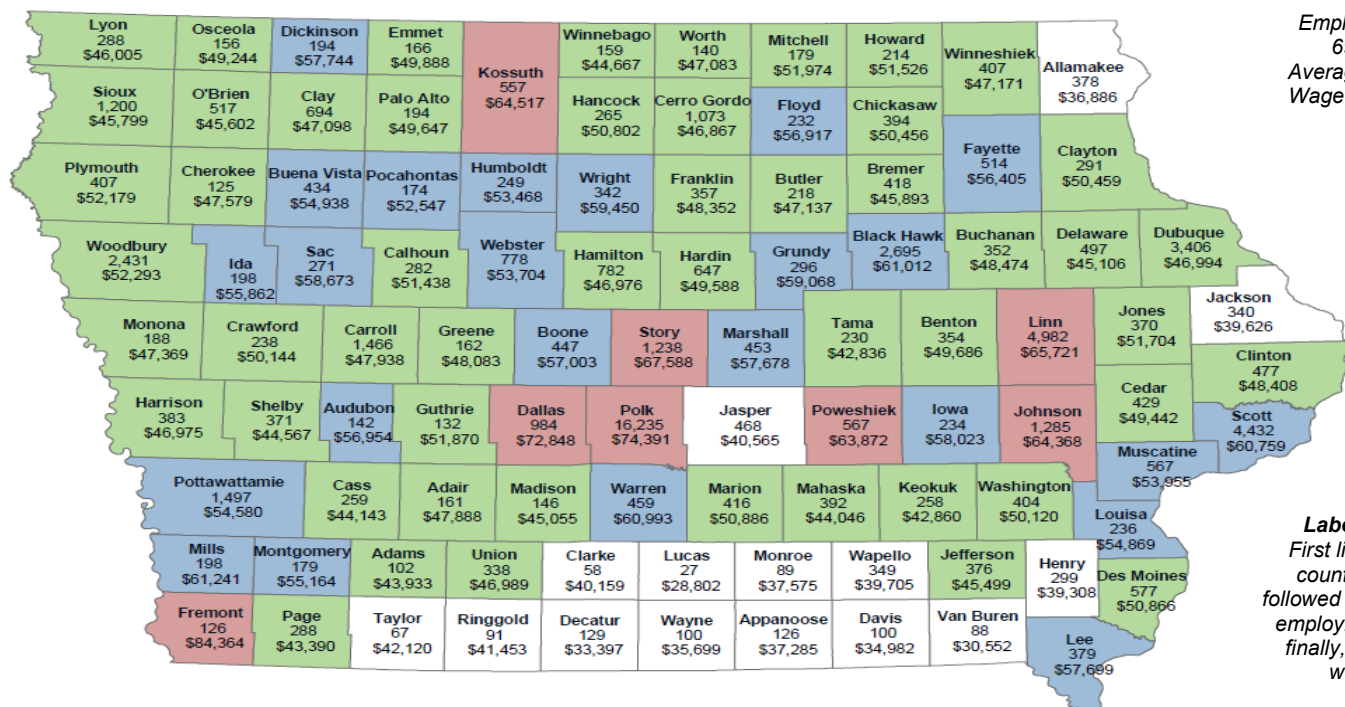
2014 Covered Employment in Wholesale Trade by County

Average Annual Wage:

	Less than \$42,120		\$42,121 to \$52,293
	\$52,294 to \$61,241		Greater than \$61,242

Sector Statewide:

Employment - 69,057
Average Annual Wage - \$58,814



Label Key:
First line is the county name followed by average employment and finally, average wage.

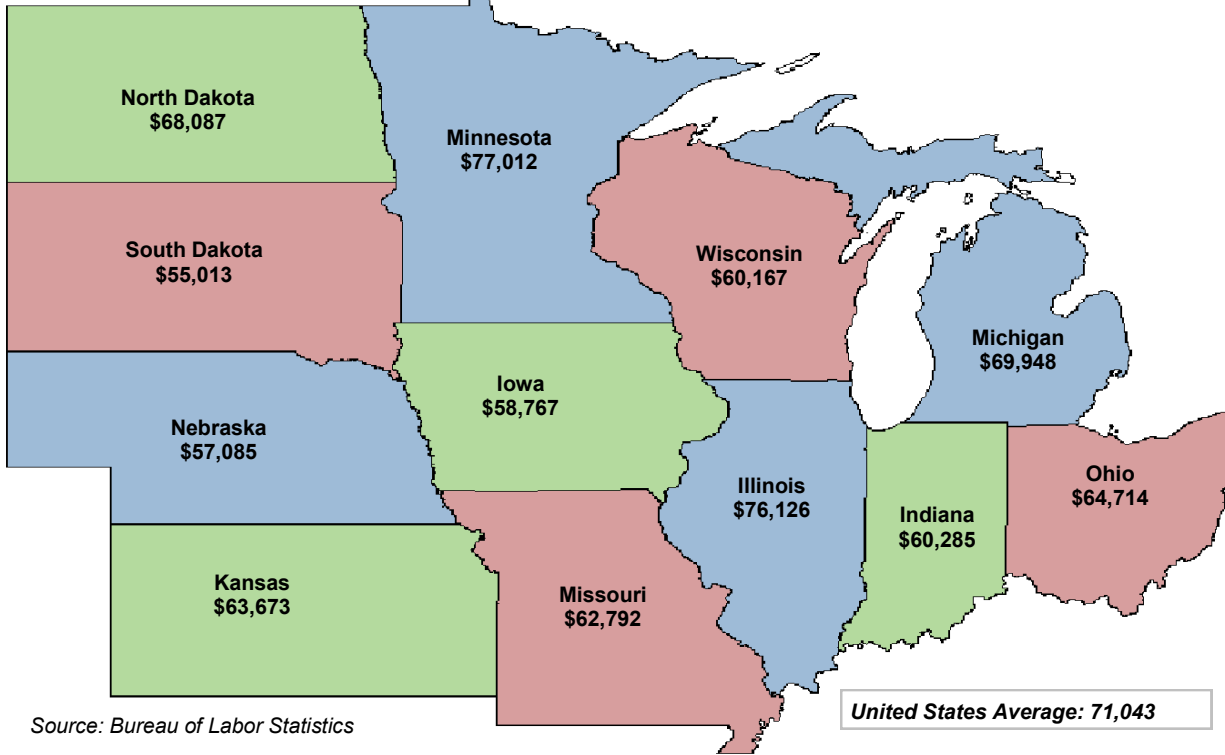
Source: Quarterly Census of Employment and Wages (QCEW), Bureau of Labor Statistics



WHOLESALE TRADE IOWA INDUSTRY PROFILE

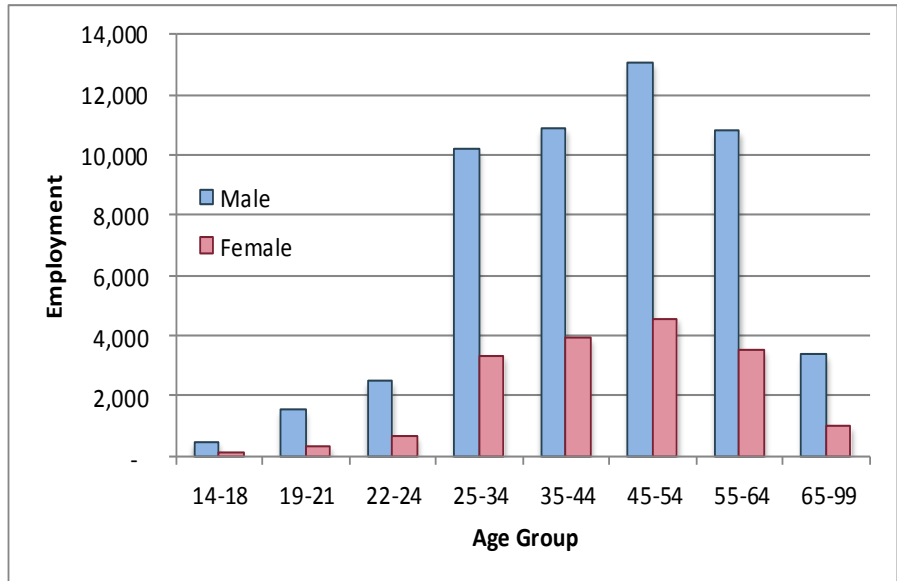
2014 Average Annual Wage for Covered Employment in Utilities

State Comparisons by Private Ownership



Source: Bureau of Labor Statistics

Industry Distribution by Age and Gender 2013 Average Annual



Source: Local Employment Dynamics, Iowa Workforce Development and U.S. Census Bureau
<http://lehd.did.census.gov>

Contact Information

Iowa Workforce Development, Employment Statistics Bureau

1000 E Grand Ave
Des Moines, IA 50319
800-532-1249
Fax: 515-281-8195
lwd.lmi@iwd.iowa.gov

www.iowaworkforcedevelopment.gov

Equal opportunity employer/program.
Auxiliary aids and services are available
upon request to individuals with disabilities.

TTY 515-281-4748
1-800-831-1399

IOWA
WORKFORCE
DEVELOPMENT

Smart. Results.

<http://www.iowaworkforcedevelopment.gov/labor-market-information-division>