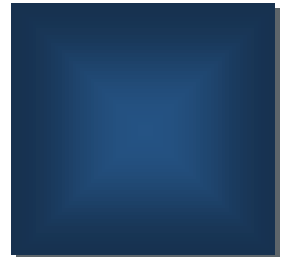
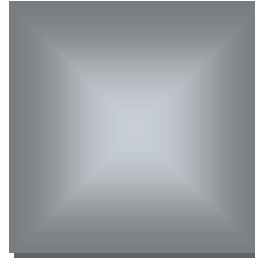


# 2016 IOWA INDUSTRY PROFILE

## RETAIL TRADE

### IOWA WORKFORCE DEVELOPMENT



#### Executive Summary

In 2015, the **retail trade** sector comprised 11.8 percent of all public and private covered employment in Iowa, providing jobs for 180,414 workers. These workers have an average annual wage of \$25,195, which is 42.8 percent lower than the average annual wage of \$44,094 for all employment. The retail trade sector is the third-largest sector in the state of Iowa.

Retail employment in Iowa had been declining prior to the Great Recession, but that pace accelerated in the deep recession years of 2009 and 2010. From 2006 to 2010, retail trade in Iowa shed 7,131 jobs, or 4.0 percent of employment. In 2015, employment has finally surpassed its 2006 pre-recession high; from 2006 to 2015, retail trade employment has added 269 jobs, an increase of about one-tenth of one percent.

This sector's wages are low both regionally and nationally. In the Midwest, Iowa has the lowest average annual wage in the retail trade sector; moreover, Iowa's average annual wage is 15.3 percent lower than the national average.

Women make up 52.0 percent of this sector's workforce.





## RETAIL TRADE IOWA INDUSTRY PROFILE

### What is Retail Trade?

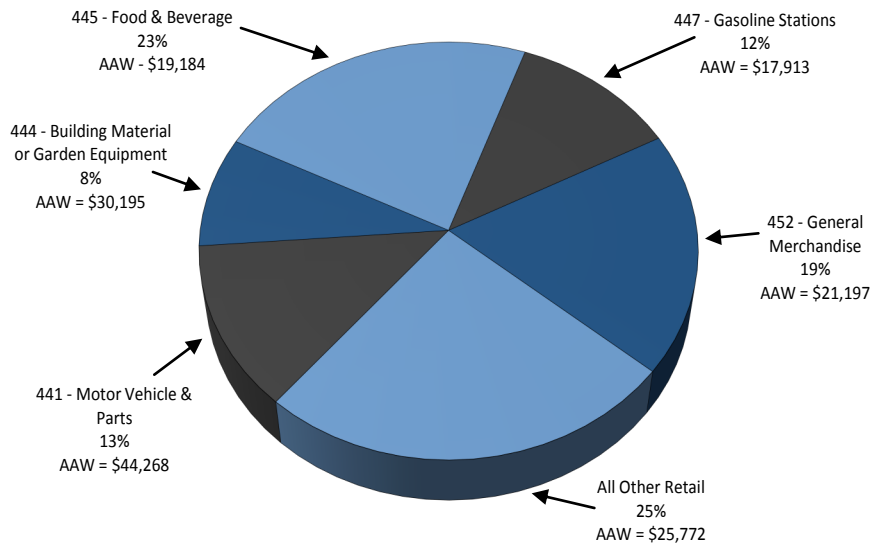
This sector comprises establishments engaged in retailing merchandise, generally without transformation, and rendering services incidental to the sale of merchandise.

The retailing process is the final step in the distribution of merchandise; retailers are, therefore, organized to sell merchandise in small quantities to the general public. This sector comprises two main types of retailers: store and non-store retailers.

### 2015 Industry Breakout by Employment in Iowa

*Retail Trade*

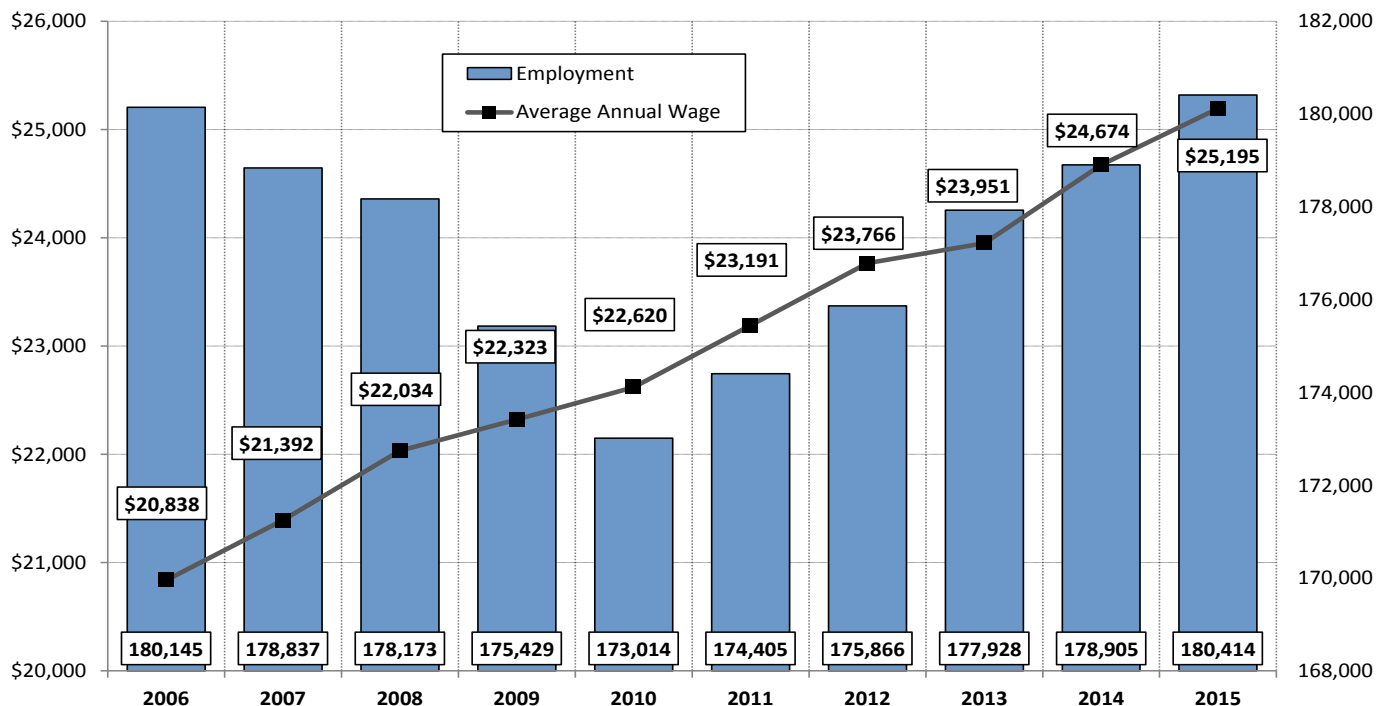
Percentage Employed & Average Annual Wage (AAW) by Subsector



Source: [www.bls.gov/cew/bls\\_naics/bls\\_naics\\_app.htm](http://www.bls.gov/cew/bls_naics/bls_naics_app.htm)

Source: Quarterly Census of Employment and Wages (QCEW), Iowa Workforce Development

### 2006-2015 Employment in Retail Trade



Source: Quarterly Census of Employment and Wages (QCEW), Iowa Workforce Development

## RETAIL TRADE IOWA INDUSTRY PROFILE



### Examples of Retail Trade Employers

| Name of Company               | Industry                         |
|-------------------------------|----------------------------------|
| Bass Pro Shops                | Sporting goods stores            |
| Best Buy                      | Electronic stores                |
| Costco                        | Other general merchandise stores |
| Fareway                       | Grocery stores                   |
| Hartig Drug                   | Health and personal care stores  |
| Hy-Vee Food Stores            | Grocery stores                   |
| Karl Chevrolet                | Automobile dealers               |
| Lujack's Northpark Auto Plaza | Automobile dealers               |
| Scheels All Sports            | Sporting goods stores            |
| Younkers                      | Department stores                |

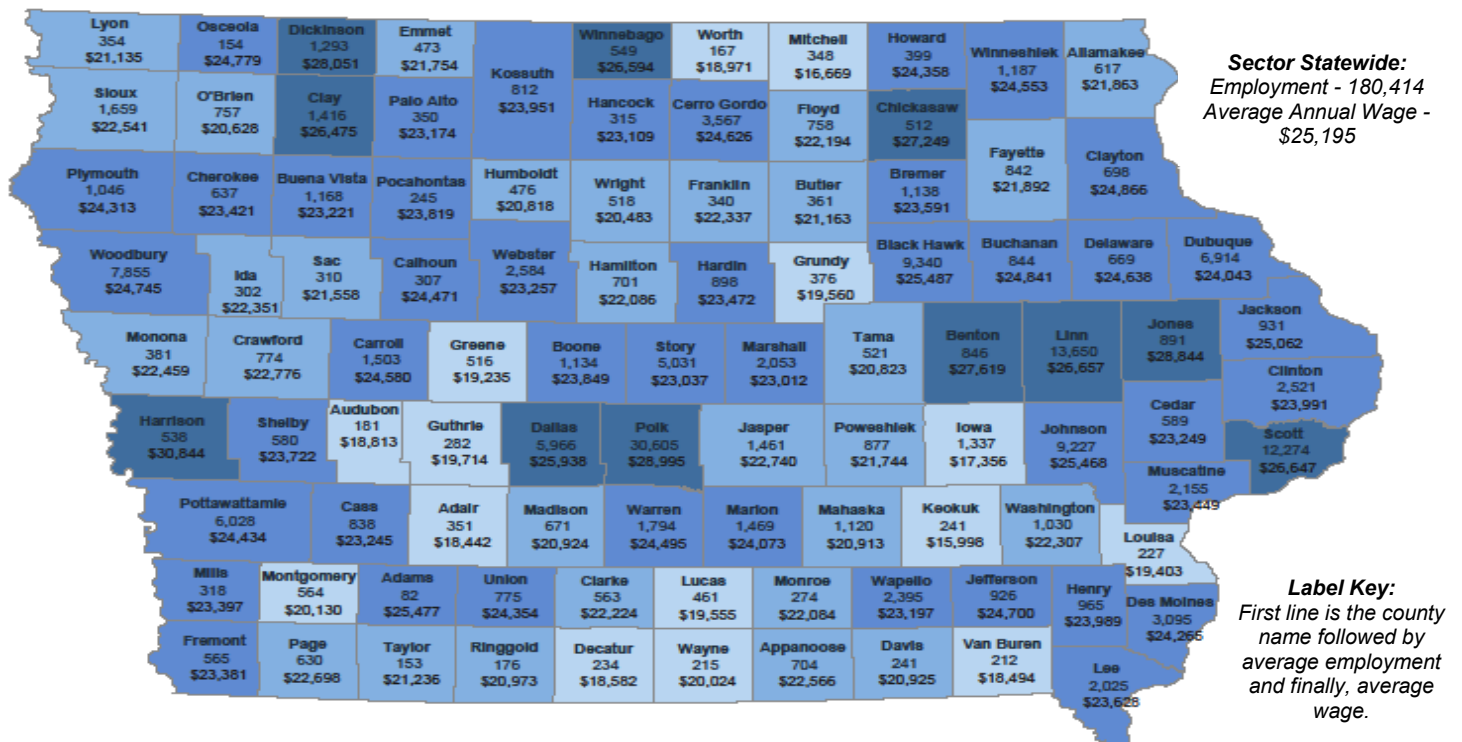
Source: [www.iowaworkforcedevelopment.gov/employer-database](http://www.iowaworkforcedevelopment.gov/employer-database)

### Employers

In 2015, there were 11,905 **retail trade** industry establishments across Iowa. **Gasoline stations** had the most locations in Iowa with 1,762. However, the **all other retail** subsector accounted for the most employment, supplying 25.1 percent of all jobs in the sector.

Retail trade represents a wide variety of subsectors, specializing in different types of retail. There are twelve different subsectors in retail trade, and the five largest have been broken out for further examination in the pie chart on the previous page.

### 2015 Covered Employment in Retail Trade



**Wages** Less than \$20,130 \$20,131 - \$22,776 \$22,777 - \$25,487 Greater than \$25,488

Source: Quarterly Census of Employment and Wages (QCEW), Iowa Workforce Development

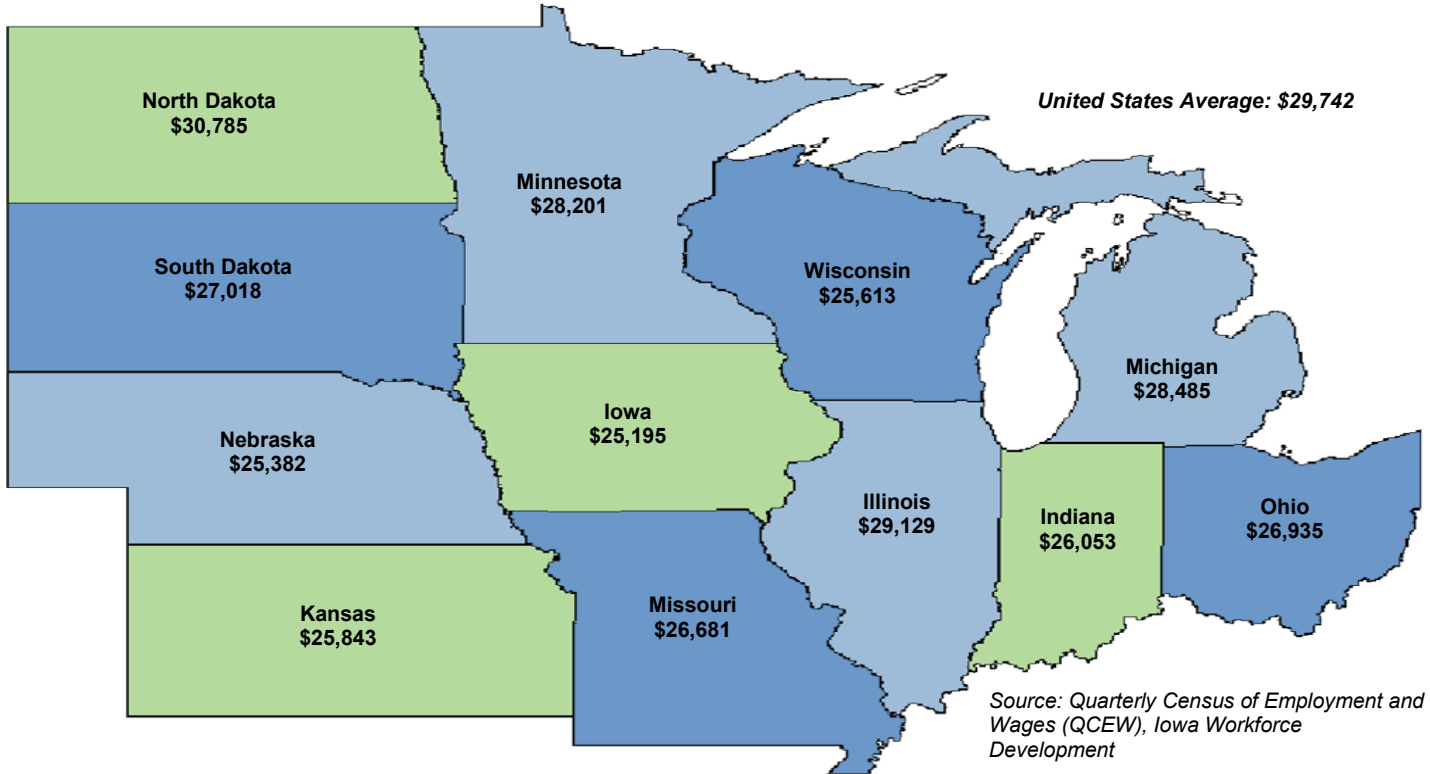
<https://www.iowaworkforcedevelopment.gov/labor-market-information-division>



## RETAIL TRADE IOWA INDUSTRY PROFILE

### 2015 Average Annual Wage for Covered Employment in Retail Trade

State Comparisons by Private Ownership



#### Contact Information

##### Iowa Workforce Development, Employment Statistics Bureau

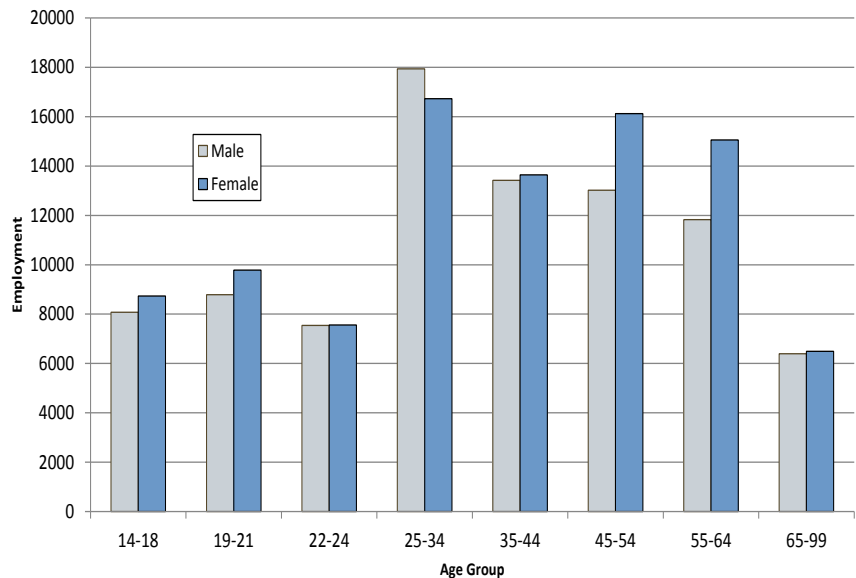
1000 E Grand Ave  
Des Moines, IA 50319  
800-532-1249  
Fax: 515-281-8195  
lwd.lmi@iwd.iowa.gov  
www.iowaworkforcedevelopment.gov

Equal opportunity employer/program.  
Auxiliary aids and services are available  
upon request to individuals with disabilities.

TTY 515-281-4748  
1-800-831-1399

IOWA®  
**WORKFORCE**  
DEVELOPMENT  
Smart. Results.

### Industry Distribution by Age & Gender 4th Qtr. 2015



Source: Local Employment Dynamics, Iowa Workforce Development and U.S. Census Bureau  
<http://lehd.did.census.gov>