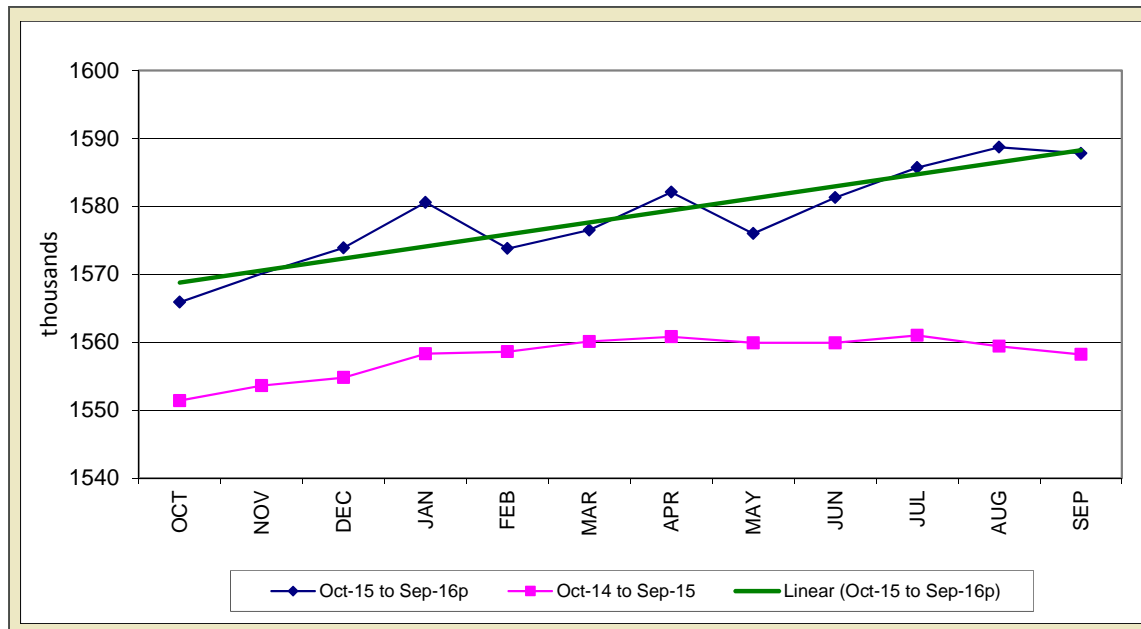


# STATE OF IOWA NONFARM EMPLOYMENT WORKFORCE DEVELOPMENT

SEPTEMBER 2016  
LMR MONTHLY

**SMALL JOBS LOSS ENDS THREE CONSECUTIVE MONTH INCREASE**



For just the third time this year Iowa establishments pared jobs (-900). Although this month's decline was small, it does halt three consecutive months of growth. Much of the loss was due to reductions in the government sector, particularly local government education. Even with this month's paring, government remains up 4,000 jobs compared to last year, whereas the state is up 29,600 jobs versus one year ago.

Education and health care advanced the most this month (+1,700) with many jobs being added in social assistance and day care. These gains more than offset a moderate decline in private education services. Strengthened by unexpected gains in wholesale, trade, transportation, and warehousing added 1,100 jobs. This sector is now up 3,000 jobs compared to last September. Manufacturing experienced a small increase this month (+500) and has added 2,300 jobs since June. Gains have been fueled by hiring in the

durable goods sectors and provide evidence that durable goods factories are willing to boost staffing levels. Alternatively, losses this month were concentrated in leisure and hospitality (-1,700) with the drop partially explained by seasonal parings in accommodations and food services and recreational industries. The financial activities sector lost 800 jobs in September following an unusually large increase last month. While a majority of sectors posted losses this month, these losses were generally small in nature and included professional and business services, information, and construction.

Annually, nonfarm employment has generally trended upward from last year's level. Construction had a minor drop this month, yet remains 13,700 jobs higher than last September. This annual gain may start to lessen as infrastructure and institutional building construction wraps up in the fall. Education and health care is second in terms of annual job growth (+6,500) with

much of the increase stemming from hiring in health care and social assistance. Smaller annual gains include leisure and hospitality and other services. Losses continue to be dominated by manufacturing (-3,400), although there has been some recent evidence that these losses are starting to subside as the annual gap starts to narrow. The only other sectors trailing last year's level were professional and business services (-2,600), information (-1,200), and mining (-100).

Nationally, nonfarm employment expanded by 156,000 jobs in September. This month's gain is below than 203,000 average established by the prior twelve months. Hiring continued in the professional and business services sector (67,000) along with health care services (+33,000). Manufacturing pared jobs compared to August (-13,000).

*For additional information, contact James Morris (515-281-8515)*

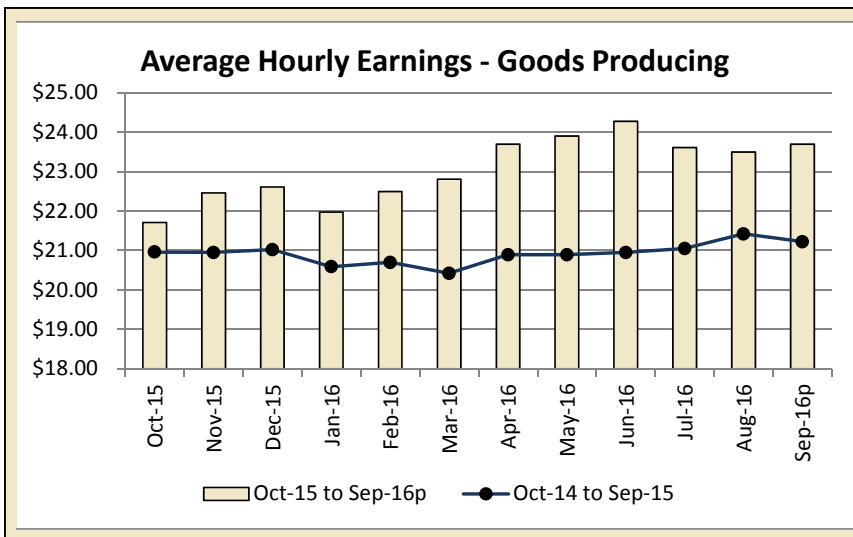
For additional information, contact James Morris (515-281-8515)

**METROPOLITAN STATISTICAL AREA  
SEASONALLY ADJUSTED NONFARM EMPLOYMENT (TOTAL NONFARM)**

MSA	Sep-15	Oct-15	Nov-15	Dec-15	Jan-16	Feb-16	Mar-16	Apr-16	May-16	Jun-16	Jul-16	Aug-16	Sep-16p
AMES	52.8	52.8	52.8	52.8	53.1	53.2	52.7	53.6	53.4	53.5	53.5	53.2	53.1
CEDAR RAPIDS	143.1	142.7	143.0	143.1	144.9	144.0	144.5	144.1	143.4	145.0	144.2	144.5	143.9
DES MOINES/W. DES MOINES	349.2	349.2	349.8	350.0	352.0	349.6	349.0	352.1	354.8	357.0	356.5	357.0	353.6
DUBUQUE	60.1	60.2	60.1	60.3	60.5	60.3	60.6	60.4	60.6	61.1	60.6	60.7	60.7
IOWA CITY	98.4	98.9	98.9	99.2	99.1	99.4	99.6	99.9	98.6	100.9	101.5	101.3	102.1
SIoux CITY *													
WATERLOO/CEDAR FALLS	90.7	90.5	90.6	90.7	91.4	90.7	90.7	90.9	90.4	90.6	90.1	90.3	89.8

\* Seasonally adjusted data for the Sioux City MSA is not available due to redefinition of the metropolitan area to now include Plymouth County

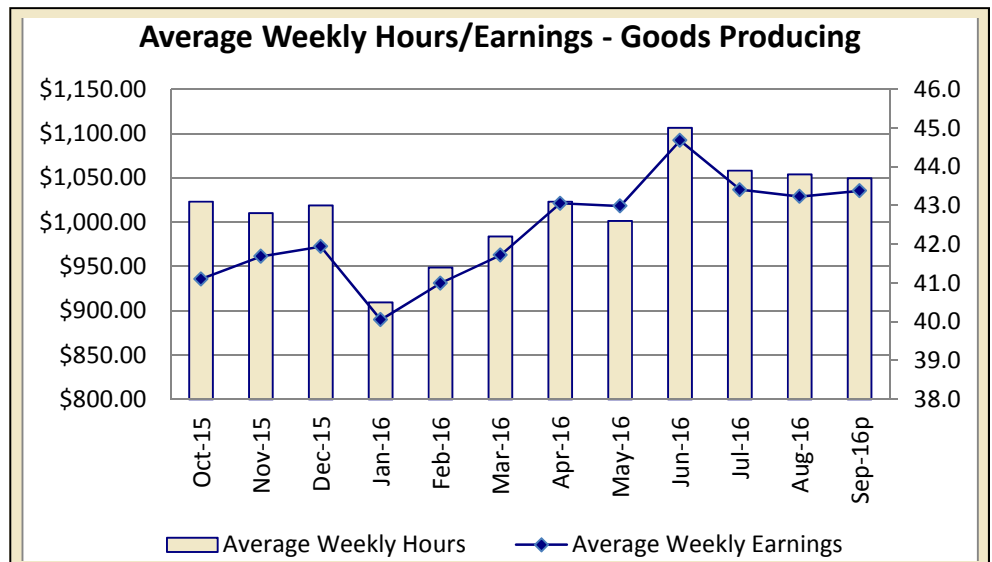
**IOWA'S HOURS & EARNINGS**



Goods-producing Hours & Earnings	
Average Weekly Earnings	\$1,035.25
Average Hourly Earnings	\$23.69
Average Weekly Hours	43.7

Production workers in Iowa's goods-producing sector averaged \$1,035.25 in September, up \$6.39 compared to last month and \$163.11 versus one year ago. Much of the gain in weekly wages stems from the large increase in overtime hours in the construction sector. Construction workers averaged \$1,383.09 a week in earnings. Manufacturing production workers averaged \$764.67 a week in September, little changed versus last month, but \$30.62 higher than last year.

Retail trade production workers averaged \$369.05 a week in September, up a slight \$4.76 versus one year ago. Financial activities production workers added \$14.64 to lift the average weekly earnings to \$899.52 a week. This weekly salary was \$10.65 more than last September.



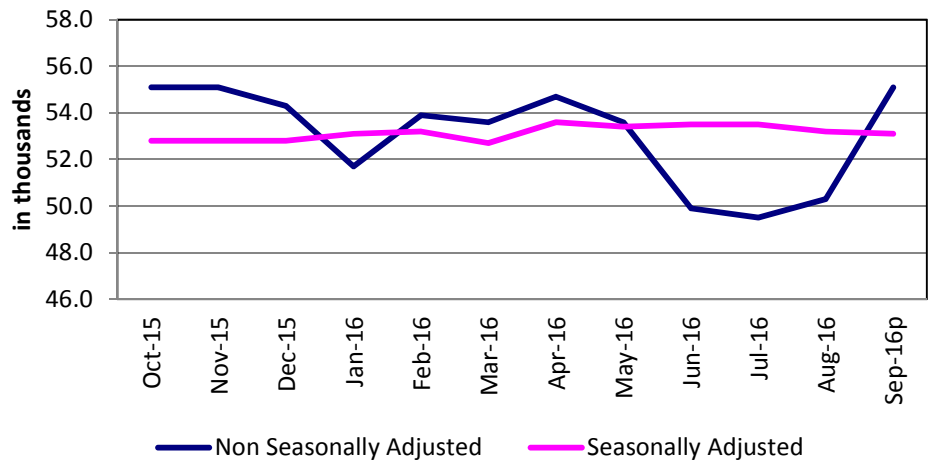
METROPOLITAN STATISTICAL AREAS

[CLICK TABLE FOR DATA](#)

Ames MSA Employment	
Total Nonfarm 15 <sup>p</sup>	55,100
Total Nonfarm 14	54,500
% Change 1 Yr	1.10%
Noteworthy Expanding and Contracting Industries (1 yr)	
Goods Producing	2.94%
Local Government	0.00%

*p - preliminary data*

Ames - Nonfarm Employment



The Ames Metro area seasonally gained 4,800 jobs in September and now stands at 55,100 jobs. State government fueled a gain of 4,300 jobs in government. Private services increased by 500 jobs and was also seasonally expected. Goods producing industries were unchanged since August.

The Ames area has added 600 jobs versus last year. Private services have added 400 jobs and goods producing industries have gained 200. Despite the large monthly gain, government is unchanged versus twelve months ago.

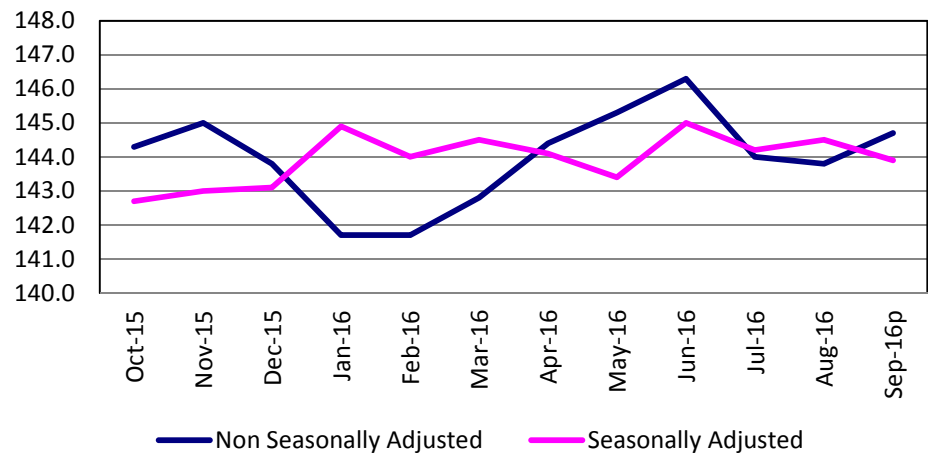
*For additional information, contact James Morris (515-281-8515)*

[CLICK TABLE FOR DATA](#)

Cedar Rapids MSA Employment	
Total Nonfarm 15 <sup>p</sup>	144,700
Total Nonfarm 14	143,000
% Change 1 Yr	1.19%
Noteworthy Expanding and Contracting Industries (1 yr)	
Prof & Bus Services	6.77%
Information	-2.33%

*p - preliminary data*

Cedar Rapids - Nonfarm Employment



The Cedar Rapids metropolitan statistical area added 900 nonfarm jobs from August, and now stands at 144,700. Total nonfarm employment in the metro area is 1,700 above one year ago.

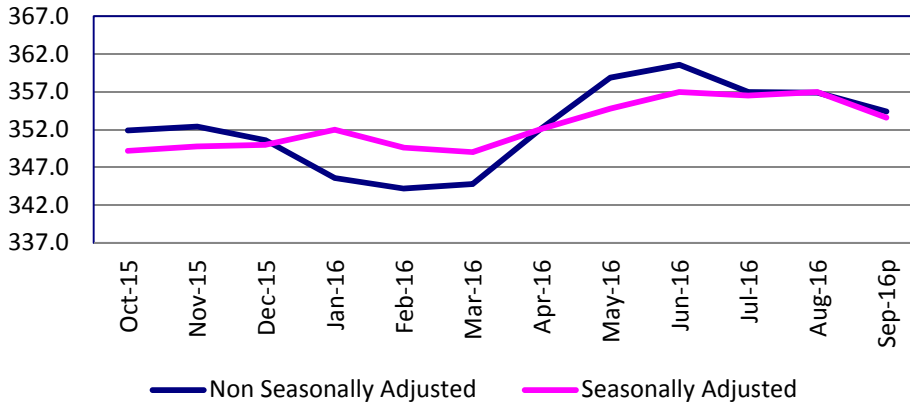
Seasonal increases carried the load this month with gains in education pushing employment up in two sectors, educational and health services and government. There were no other sectors with job gains.

A loss of 400 jobs in leisure and hospitality as well as smaller decreases in professional and business services and manufacturing (-200 each), and trade, transportation and warehousing, financial activities and other services (-100 each) offset a good portion of the seasonal gains in education.

Government, manufacturing and information are the only sectors with over-the-year employment losses, paring 300, 100 and 100 jobs, respectively. Professional and business services led all sectors with a gain of 900 jobs, accompanied by several smaller gains.

*For additional information, contact Dennis Schwartz (515-281-5754)*

**Des Moines/West Des Moines -  
Nonfarm Employment**



[CLICK TABLE FOR DATA](#)

Des Moines MSA Employment	
Total Nonfarm 15p	354,400
Total Nonfarm 14	350,000
% Change 1 Yr	1.26%
Noteworthy Expanding and Contracting Industries (1 yr)	
Mining & Construct	7.03%
Information	-3.03%

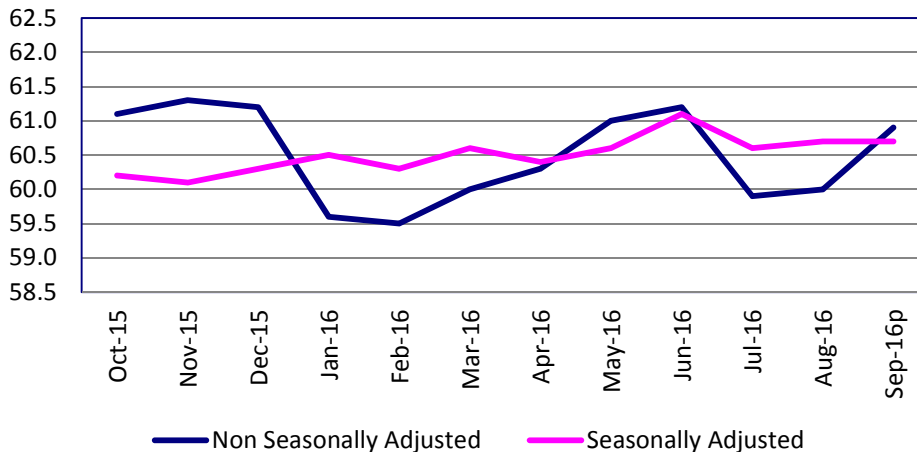
p - preliminary data

The Des Moines metro area shed 2,500 jobs in September, lowering total nonfarm employment down to 354,400 jobs. Jobs are typically pared this time of year due to seasonal recreational industries releasing temporary summer staff. Virtually all sectors contracted this month and were led by a drop of 2,700 in leisure and hospitality. Both professional and business services and trade and transportation experienced seasonal decreases of 800 jobs. Financial activities pared 600 jobs due to cutbacks in insurance and related services. Smaller losses included construction, manufacturing, and information. Job gains were focuses in government (+2,700) and primarily due to schools boosting staffing levels in preparation for the new school year. Private education also fueled a gain of 200 in education and health care services.

Annually, the Des Moines metro area has added 4,400 jobs (+1.3 percent). Financial activities has added the most jobs (+2,400) followed by trade and transportation (+1,400) then construction (+1,300). Losses have been limited to government (-1,500), information (-200) and manufacturing (-100).

For additional information, contact James Morris (515-281-8515)

**Dubuque - Nonfarm Employment**



[CLICK TABLE FOR DATA](#)

Dubuque MSA Employment	
Total Nonfarm 15p	60,900
Total Nonfarm 14	60,400
% Change 1 Yr	1.50%
Noteworthy Expanding and Contracting Industries (1 yr)	
Pvt Service Provide	1.38%
Retail Trade	-1.45%

p - preliminary data

The Dubuque Metro gained 900 jobs in September and now rests at 60,900 jobs. This month's gain is average for the Dubuque area and keeps the MSA up 500 jobs versus one year ago.

The largest monthly gain was in local government (+600) and was related to local schools resuming following the summer break. Government is unchanged versus one year ago. Private services added 500 jobs this month and is now up 600 jobs annually. Goods producing industries shed 200 jobs in September and trail last year's level by 100 jobs..

For additional information, contact James Morris (515-281-8515)

METROPOLITAN STATISTICAL AREAS

[CLICK TABLE FOR DATA](#)

Iowa City MSA Employment	
Total Nonfarm 15 <sup>p</sup>	101,700
Total Nonfarm 14	99,400
% Change 1 Yr	2.31%
Noteworthy Expanding and Contracting Industries	
Leisure & Hospitality	1.94%
Prof & Business	-1.43%

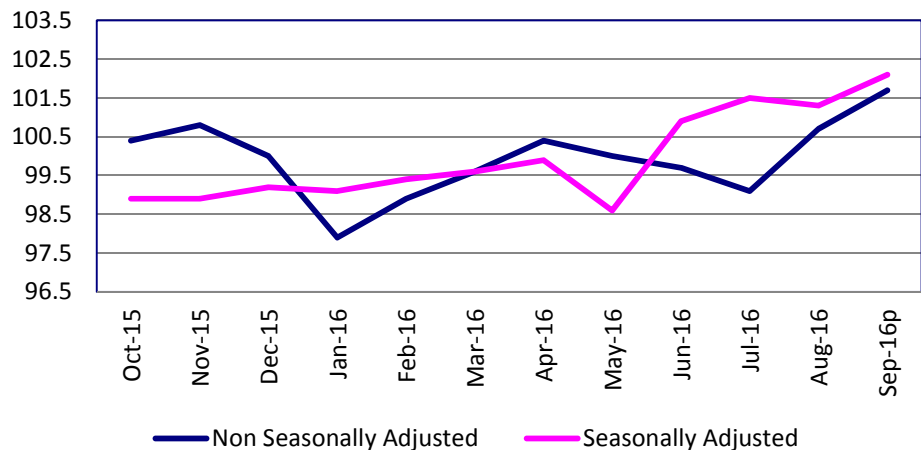
*p - preliminary data*

Nonfarm employment in the Iowa City metropolitan statistical area gained 1,000 jobs from last month. Government enjoyed the greatest gain, adding 1,000 jobs, in a mix of state and local government. Goods producing shed 100 jobs, but were offset by an equal gain in private service providing jobs.

The metro area has added 2,300 jobs from one year ago with gains in nearly every sector. The only exceptions are trade, transportation and warehousing (-100), professional and business services (-100) and goods producing which is unchanged.

*For additional information, contact Dennis Schwartz (515-281-5754)*

Iowa City - Nonfarm Employment



[CLICK TABLE FOR DATA](#)

Sioux City MSA Employment	
Total Nonfarm 15 <sup>p</sup>	87,600
Total Nonfarm 14	89,100
% Change 1 Yr	-1.68%
Noteworthy Expanding and Contracting Industries	
Leisure & Hospitality	3.53%
Prof & Business	-2.53%

*p - preliminary data*

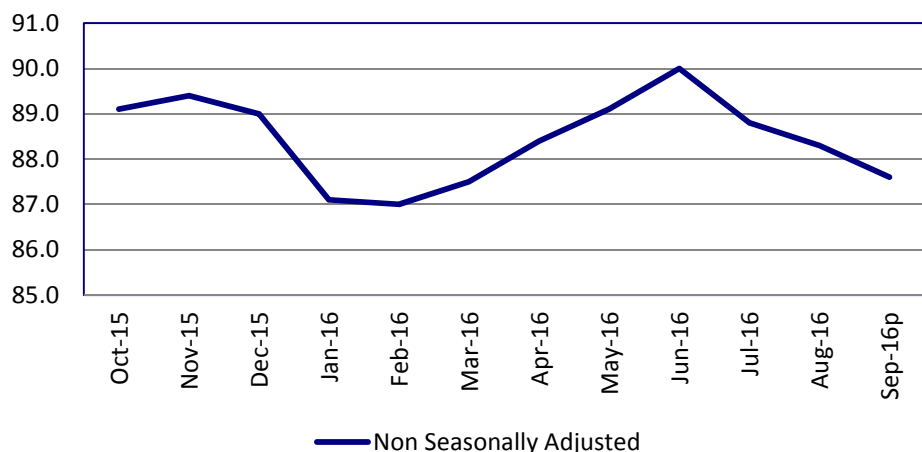
*The Sioux City MSA has been redefined. It now includes: Dixon and Dakota Counties in Nebraska, Union County in South Dakota, and Woodbury and Plymouth Counties in Iowa.*

Employment in the Sioux City MSA trimmed 700 jobs from August. Goods producing shed 600 jobs with just 100 jobs pared from manufacturing. Leisure and hospitality had a seasonal loss of 300 jobs. Professional and business services and trade, transportation and warehousing each pared 100 jobs. Government is the only sector with a jobs gain this month, adding 900 jobs.

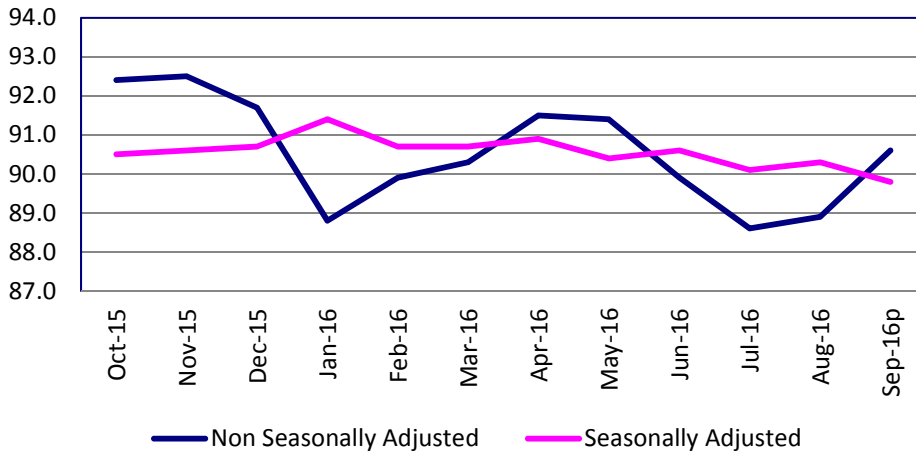
Overall, the area has 1,500 fewer jobs from one year ago. Goods producing is responsible for 1,000 of those jobs, with the remaining 500 in the service providing sectors. Trade, transportation and warehousing added 500 jobs and leisure and hospitality enjoyed a gain of 300. No other sectors had a gain in jobs.

*For additional information, contact Dennis Schwartz (515-281-5754)*

Sioux City - Nonfarm Employment



**Waterloo/Cedar Falls - Nonfarm Employment**



[CLICK TABLE FOR DATA](#)

<b>Waterloo/Cedar Falls MSA Employment</b>	
Total Nonfarm 15p	90,600
Total Nonfarm 14	91,300
% Change 1 Yr	-0.77%
Noteworthy Expanding and Contracting Industries	
Manufacturing	1.88%
Retail Trade	-3.74%

*p - preliminary data*

The Waterloo/Cedar Falls metropolitan statistical area's total nonfarm employment is up 1,700 jobs from the previous month and stands at 90,600. Gains in nearly every sector, largely seasonal in nature, helped boost employment. Losses occurred in leisure and hospitality (-400) and professional and business services (-100). Financial activities is unchanged.

Over the year, employment is down 700 jobs, with manufacturing and government each experiencing a loss of 300. Other sectors paring jobs include; trade, transportation and warehousing (-100), and professional and business services (-100). Manufacturing has added 300 jobs from one year ago, all in the durable goods segment.

*For additional information, contact Dennis Schwartz (515-281-5754)*

**LINKS TO ADDITIONAL INFORMATION**

Click on a link below to visit web page

[Worker Adjustment & Retraining Notification Act \(WARN\)](#)

[U.S. Bureau of Labor Statistics](#)

[Unemployment Insurance Benefit Payments](#)

[Consumer Price Index \(CPI\)](#)

[Unemployment Insurance Benefit Paid by County](#)

[Employment Statistics for Canada](#)

**Current Employment Statistics**

Each month the **Current Employment Statistics** program surveys about 143,000 businesses and government agencies, representing approximately 588,000 individual worksites, in order to provide detailed industry data on employment, hours, and earnings of workers on nonfarm payrolls for all 50 States, the District of Columbia, Puerto Rico, the Virgin Islands, and about 450 metropolitan areas and divisions.

**Contact Information**

Iowa Workforce Development  
Employment Statistics Bureau  
1000 East Grand Avenue  
Des Moines, IA 50319-0209  
Tel: 515-281-8515  
Tel: 800-532-9793  
Fax: 515-281-8195  
Email: trends@iowa.gov  
www.iowaworkforce.org

*Equal opportunity employer/program. Auxiliary aids and services are available upon request to individuals with disabilities. For deaf and hard of hearing, use Relay 711*