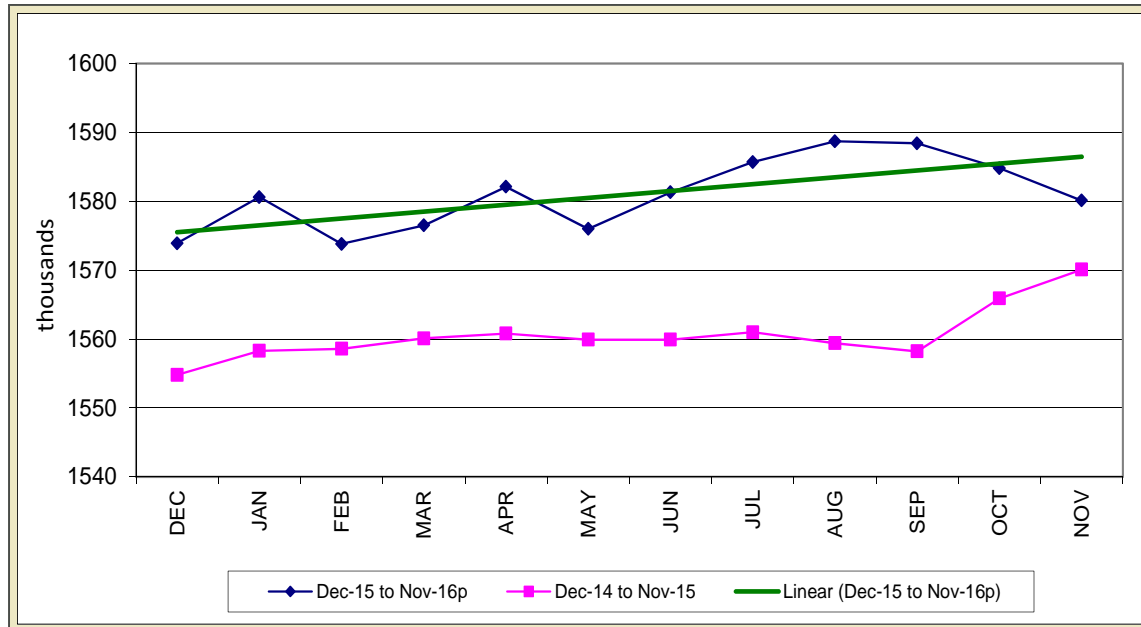


STATE OF IOWA NONFARM EMPLOYMENT WORKFORCE DEVELOPMENT

NOVEMBER 2016
LMR MONTHLY

RETAIL TRADE AMONG SECTORS CONTRIBUTING TO THREE MONTH JOBS DECLINE



Iowa establishments shed 4,700 jobs in November and lowered employment down to 1,580,100 jobs. This drop marked the third straight month for job losses for the state. Private sector losses totaled 3,900 jobs and government pared 800 jobs. Public sector drops were primarily within local government (-600), although the federal sector shed jobs also (-200). Government trails last year's level by 1,300 jobs. Private sectors remain up (+11,300), but the magnitude of the annual increase has been waning as the year comes to an end.

In November, the largest movement occurred in trade, transportation, and utilities which experienced a decline of 2,300 jobs. The majority of the loss was incurred in retail (-1,400), although transportation, utilities, and wholesale shed jobs this month as well. Iowa's retail sector has not fared well through 2016 and is down

compared to last November (-1,400). Iowa's manufacturers lost 1,400 jobs with losses distributed evenly between durable and nondurable goods factories. This marks the second straight decline following a brief upsurge in the summer. Other notable losses included other services (-1,200), leisure and hospitality (-500), and information (-200). On the other hand, job gains were realized in three private industries and led by professional and business services (+1,400) and heavily fueled by hiring in administrative support and waste management services. All other gains this month were small and included education and health care (+300) and financial activities (+100).

Annually, total nonfarm employment is up just 10,000 jobs. Monthly declines over the past few months have reduced the annual growth rate considerably. Construction continues to sustain employment and leads all

sectors with 8,300 jobs added. Education and health care is second in terms of growth (+4,200) followed by financial activities (+3,900). Manufacturing continues to trend down and lags behind last year's mark by 7,300 jobs. The only other sectors down annually are professional and business services (-2,200) and information services (-1,300).

Nationally, total nonfarm gained 178,000 jobs in November. The largest gains were in professional and business services, health care, and construction. The annual growth rate of 1.6 percent for the U.S. continues to outpace the state's 0.6 percent growth rate.

For additional information, contact James Morris (515-281-8515)

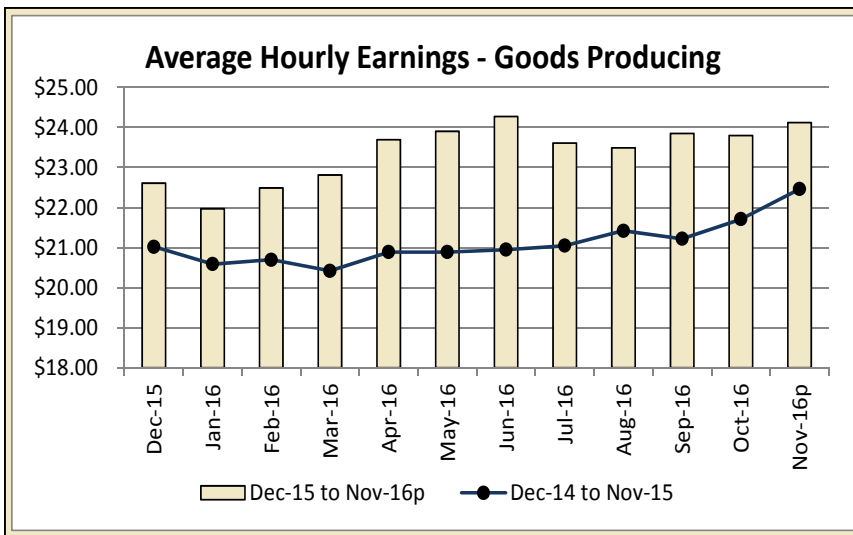
For additional information, contact James Morris (515-281-8515)

**METROPOLITAN STATISTICAL AREA
SEASONALLY ADJUSTED NONFARM EMPLOYMENT (TOTAL NONFARM)**

MSA	Nov-15	Dec-15	Jan-16	Feb-16	Mar-16	Apr-16	May-16	Jun-16	Jul-16	Aug-16	Sep-16	Oct-16	Nov-16p
AMES	52.8	52.8	53.1	53.2	52.7	53.6	53.4	53.5	53.5	53.2	53.1	53.2	53.5
CEDAR RAPIDS	143.0	143.1	144.9	144.0	144.5	144.1	143.4	145.0	144.2	144.5	143.9	144.7	144.3
DES MOINES/W. DES MOINES	349.8	350.0	352.0	349.6	349.0	352.1	354.8	357.0	356.5	357.0	353.7	352.4	353.7
DUBUQUE	60.1	60.3	60.5	60.3	60.6	60.4	60.6	61.1	60.6	60.7	60.9	61.0	60.8
IOWA CITY	98.9	99.2	99.1	99.4	99.6	99.9	98.6	100.9	101.5	101.3	102.2	101.6	101.0
SIOUX CITY *													
WATERLOO/CEDAR FALLS	90.6	90.7	91.4	90.7	90.7	90.9	90.4	90.6	90.1	90.3	89.7	89.8	89.3

* Seasonally adjusted data for the Sioux City MSA is not available due to redefinition of the metropolitan area to now include Plymouth County

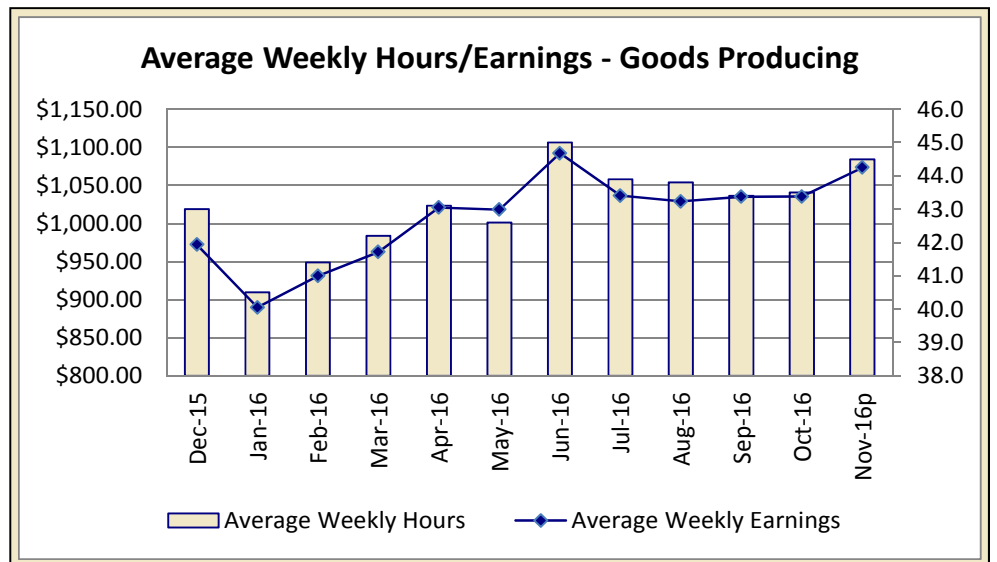
IOWA'S HOURS & EARNINGS



Goods-producing Hours & Earnings	
Average Weekly Earnings	\$1,073.34
Average Hourly Earnings	\$24.12
Average Weekly Hours	44.5

Production workers in Iowa's goods-producing sector averaged \$1,073.34 in November, up \$38.04 compared to last month, and \$112.05 higher than one year ago. Workers in Iowa's construction sector have added almost four hours of overtime compared to last year leading to an increase of over two-hundred dollars in weekly pay. The average weekly wage for construction workers was \$1,425.51 compared to just \$799.34 for manufacturing workers.

Workers in Iowa's retail sector have seen little movement compared to last year and averaged \$356.22 per week in November. Iowa's financial sector workers have pared \$10.56 versus last year and averaged \$907.90 per week.



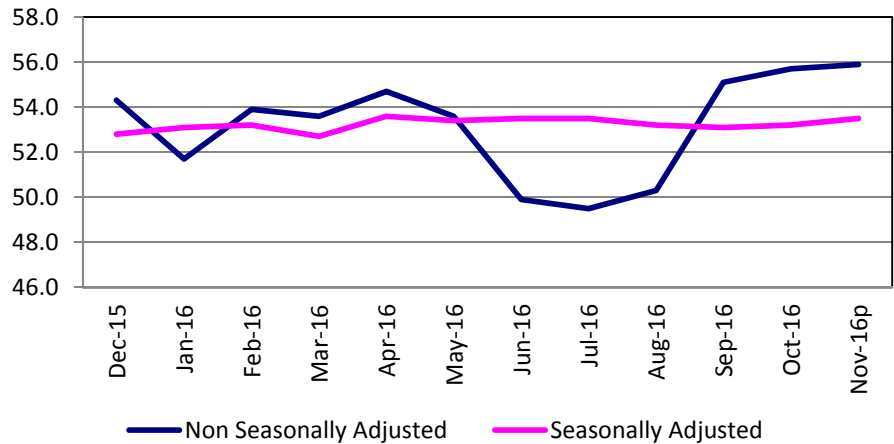
METROPOLITAN STATISTICAL AREAS

[CLICK TABLE FOR DATA](#)

Ames MSA Employment	
Total Nonfarm 15 ^p	55,900
Total Nonfarm 14	55,100
% Change 1 Yr	1.45%
Noteworthy Expanding and Contracting Industries (1 yr)	
Goods Producing	2.94%
Government	0.43%

p - preliminary data

Ames - Nonfarm Employment



The Ames Metro area added a slight 200 jobs in November, lifting employment to 55,900 jobs. This month typically experiences little movement for the MSA, so this month's gain is slightly above average for the area. Both government and private services added 100 jobs and goods producing industries were unchanged in November.

Annually, the MSA has gained 800 jobs primarily due to expansion within private services (+500). Goods producing sectors are up 200 jobs, and government is up 100 due to hiring in state government.

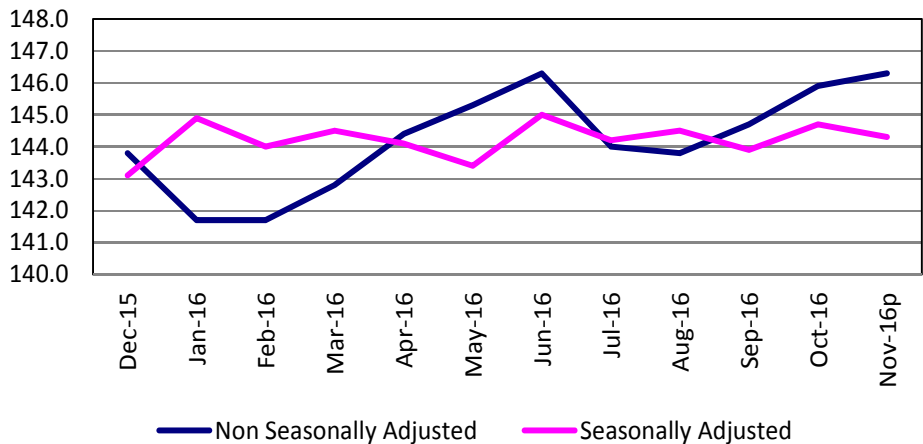
For additional information, contact James Morris (515-281-8515)

[CLICK TABLE FOR DATA](#)

Cedar Rapids MSA Employment	
Total Nonfarm 15 ^p	146,300
Total Nonfarm 14	145,000
% Change 1 Yr	0.90%
Noteworthy Expanding and Contracting Industries (1 yr)	
Prof & Bus Services	5.07%
Information	-4.65%

p - preliminary data

Cedar Rapids - Nonfarm Employment



The Cedar Rapids metropolitan statistical area added 400 nonfarm jobs from October, and now stands at 146,300. Total nonfarm employment in the metro area is 1,300 above one year ago.

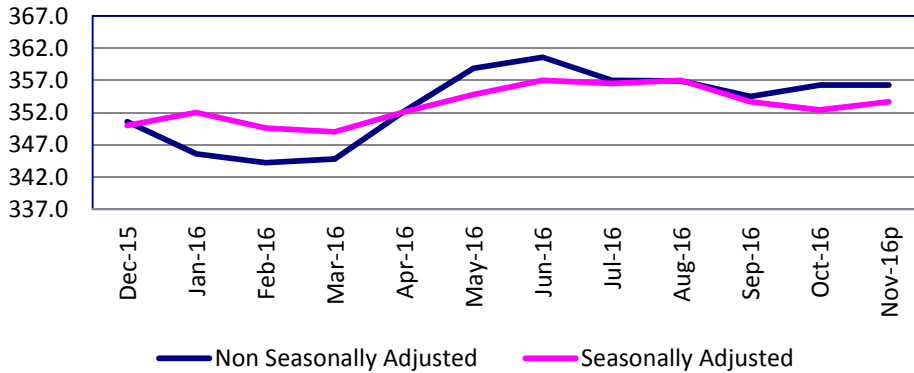
Trade, transportation and warehousing added 300 jobs, aided by a small seasonal gain of 200 in retail trade. Educational and health services added 200 jobs while leisure and hospitality had an expected seasonal decline of 100. Manufacturing gained 100 jobs, all in non-durable goods and natural resources and construction shed 100 jobs as colder weather set in. All other sectors were unchanged.

Professional and business services added 700 jobs from one year to lead all sectors. Information has shed 200 jobs from one year ago and manufacturing and government have each pared 100 jobs.

For additional information, contact Dennis Schwartz (515-281-5754)

[CLICK TABLE FOR DATA](#)

**Des Moines/West Des Moines -
Nonfarm Employment**



Des Moines MSA Employment	
Total Nonfarm 15p	356,300
Total Nonfarm 14	352,400
% Change 1 Yr	1.11%
Noteworthy Expanding and Contracting Industries (1 yr)	
Mining & Construct	7.07%
Information	-4.55%

p - preliminary data

The Des Moines metro area saw little movement in total nonfarm employment in November and remained at 356,300 jobs. Jobs pared in the private sector (-400) were exactly matched by gains in the public sector (+400). Over the past ten years, the Des Moines area averaged job gains of 1,000 in November, so this month's stagnation is surprising. Even with this month's discouraging return, the metro area remains up 3,900 jobs over last year's level.

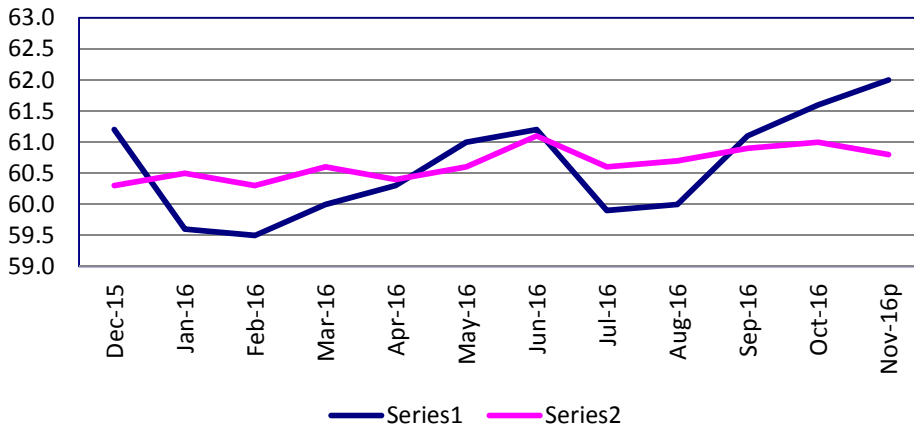
Leisure and hospitality shed 1,600 jobs in November to lead all sectors. Although some decline is seasonally expected this month's drop is large historically, and may be the result of firms finally paring summer employment late this year. This sector remains up 300 jobs versus one year ago. The only other sector losses were relatively small and included mining, logging, and construction (-200) and information (-100). On the other hand, health care services fueled a gain of 800 in education and health care services, and trade and transportation expanded by 700 on seasonal retail hiring.

Annually, the Des Moines metro area remains up due entirely to hiring in the private sector (+5,200). Finance has added the most jobs (+1,700) followed by construction (+1,300) then education and health care (+900). Aside from government, losses have been limited to information (-300) and manufacturing (-100).

For additional information, contact James Morris (515-281-8515)

[CLICK TABLE FOR DATA](#)

Dubuque - Nonfarm Employment



Dubuque MSA Employment	
Total Nonfarm 15p	62,000
Total Nonfarm 14	61,300
% Change 1 Yr	0.65%
Noteworthy Expanding and Contracting Industries (1 yr)	
Pvt Service Provide	1.34%
Trade & Transport	-2.36%

p - preliminary data

The Dubuque Metro advanced by 400 jobs in November and now stands at 62,000 jobs. The gain this month is average over the past ten years and was entirely due to hiring within private services (+400). Trade and transportation added 100 jobs due entirely to seasonal retail hiring. Both goods producing industries and government were unchanged compared to October.

Annually, the Dubuque MSA remains up 700 jobs fueled primarily by hiring in private service industries. Government has added 100 jobs at the local level. Goods producing industries are unchanged versus one year ago.

For additional information, contact James Morris (515-281-8515)

METROPOLITAN STATISTICAL AREAS

[CLICK TABLE FOR DATA](#)

Iowa City MSA Employment	
Total Nonfarm 15p	102,900
Total Nonfarm 14	100,800
% Change 1 Yr	2.08%
Noteworthy Expanding and Contracting Industries	
Leisure & Hospitality	5.00%
Retail Trade	-2.80%

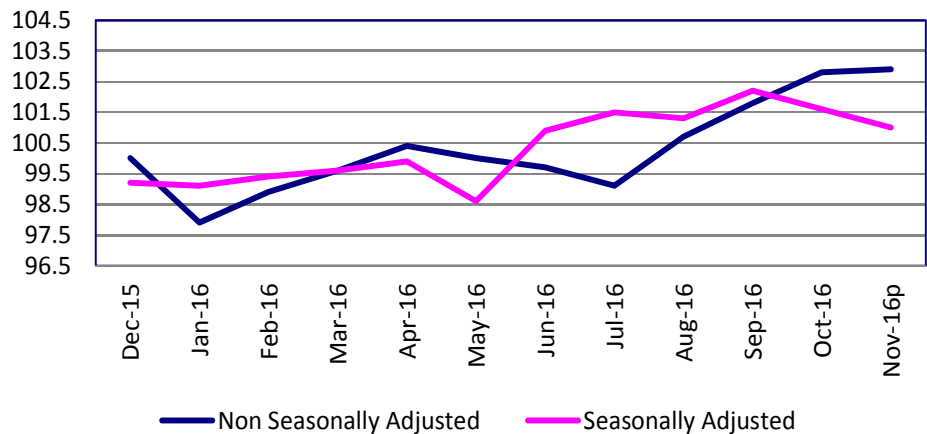
p - preliminary data

Nonfarm employment in the Iowa City metropolitan statistical area gained 100 jobs from last month. Government added 300 jobs with a gain of 400 in local government offset slightly (-100) by state government. Trade, transportation and warehousing pared 200 jobs, followed by goods producing which shed 100 jobs.

The metro area has added 2,100 jobs from one year ago with gains in nearly every sector. The only exceptions are Trade, transportation and warehousing (-300) and professional and business services (unchanged).

For additional information, contact Dennis Schwartz (515-281-5754)

Iowa City - Nonfarm Employment



[CLICK TABLE FOR DATA](#)

Sioux City MSA Employment	
Total Nonfarm 15p	88,900
Total Nonfarm 14	89,400
% Change 1 Yr	-0.56%
Noteworthy Expanding and Contracting Industries	
Trade & Transport	4.50%
Manufacturing	-3.31%

p - preliminary data

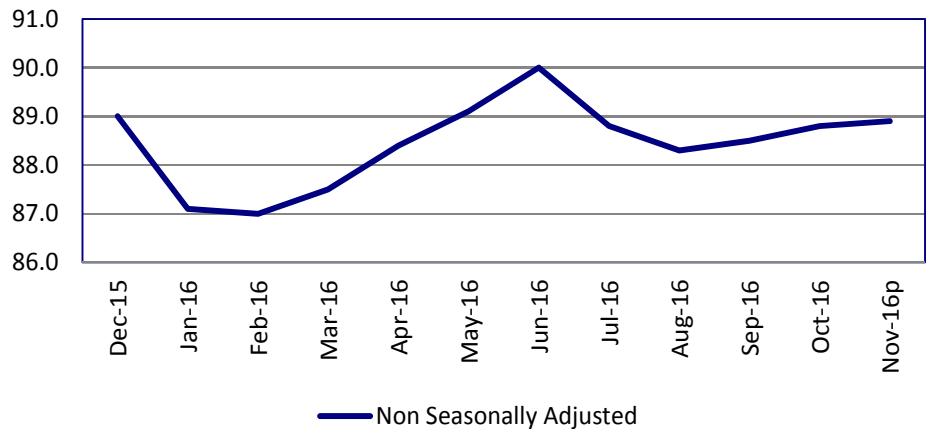
The Sioux City MSA has been redefined. It now includes: Dixon and Dakota Counties in Nebraska, Union County in South Dakota, and Woodbury and Plymouth Counties in Iowa.

Employment in the Sioux City MSA added 100 jobs from October. Goods producing shed 200 jobs with half that amount pared from manufacturing. Leisure and hospitality had a seasonal loss of 200 jobs. Professional and business services was unchanged and trade, transportation and warehousing added 800 jobs, only 200 of which were in retail trade. Government was also unchanged. November marks the third consecutive month of gains.

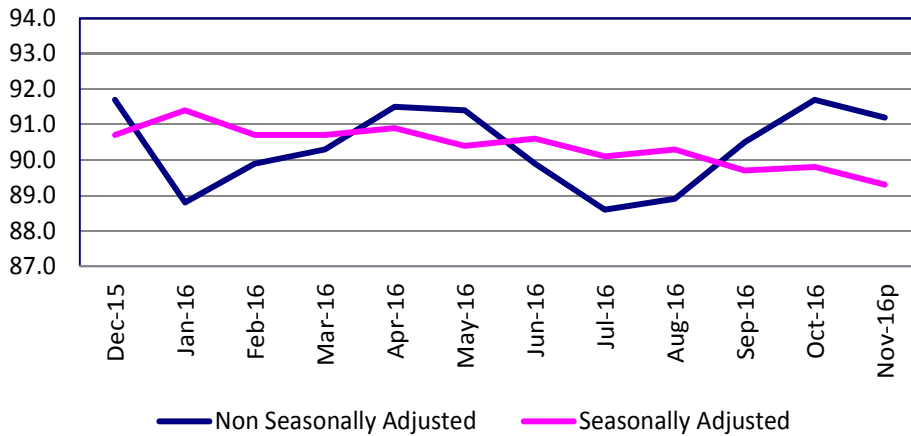
Overall, the area has 500 fewer jobs from one year ago. Goods producing has pared 700 jobs, including 500 from manufacturing. Government and professional and business services have each shed 200 jobs. Gains in trade, transportation and warehousing (900), and leisure and hospitality (300) have partially offset those losses.

For additional information, contact Dennis Schwartz (515-281-5754)

Sioux City - Nonfarm Employment



Waterloo/Cedar Falls - Nonfarm Employment



[CLICK TABLE FOR DATA](#)

Waterloo/Cedar Falls MSA Employment	
Total Nonfarm 15p	91,200
Total Nonfarm 14	92,500
% Change 1 Yr	-1.41%
Noteworthy Expanding and Contracting Industries	
Financial Activities	2.08%
Retail Trade	-4.42%

p - preliminary data

The Waterloo/Cedar Falls metropolitan statistical area's total nonfarm employment is down 500 jobs from the previous month and stands at 91,200. Government is the only sector with a jobs gain this month, adding just 100 jobs. Trade, transportation and warehousing and leisure and hospitality each pared 100 jobs. All other sectors were unchanged.

Over the year, employment is down 1,300 jobs. Manufacturing, financial activities and leisure and hospitality each added 100 jobs. Trade, transportation and warehousing has pared 600 jobs from one year ago, nearly all (500) in retail trade. Government has 400 fewer jobs with a drop of 500 in state government that was partially offset by a gain of 100 in local government.

For additional information, contact Dennis Schwartz (515-281-5754)

LINKS TO ADDITIONAL INFORMATION

Click on a link below to visit web page

Worker Adjustment & Retraining Notification Act (WARN)

U.S. Bureau of Labor Statistics

Unemployment Insurance Benefit Payments

Consumer Price Index (CPI)

Unemployment Insurance Benefit Paid by County

Employment Statistics for Canada

Current Employment Statistics

Each month the **Current Employment Statistics** program surveys about 143,000 businesses and government agencies, representing approximately 588,000 individual worksites, in order to provide detailed industry data on employment, hours, and earnings of workers on nonfarm payrolls for all 50 States, the District of Columbia, Puerto Rico, the Virgin Islands, and about 450 metropolitan areas and divisions.

Contact Information

Iowa Workforce Development
Employment Statistics Bureau
1000 East Grand Avenue
Des Moines, IA 50319-0209
Tel: 515-281-8515
Tel: 800-532-9793
Fax: 515-281-8195
Email: trends@iowa.gov
www.iowaworkforce.org

Equal opportunity employer/program. Auxiliary aids and services are available upon request to individuals with disabilities. For deaf and hard of hearing, use Relay 711