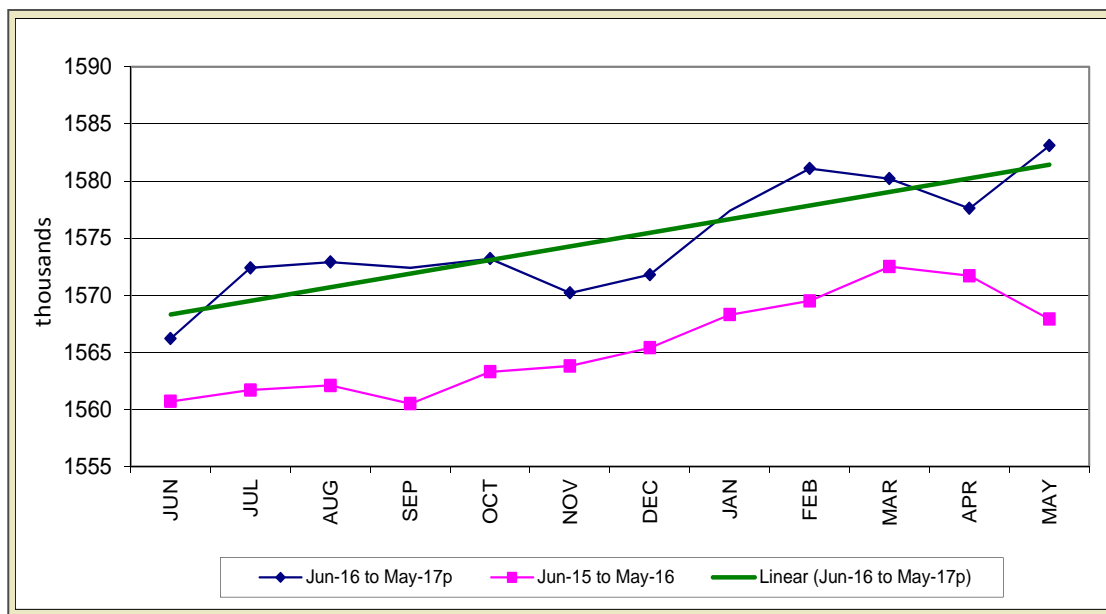


STATE OF IOWA NONFARM EMPLOYMENT WORKFORCE DEVELOPMENT

MAY 2017
LMR MONTHLY

NONFARM EMPLOYMENT SEES FIRST GAIN SINCE FEBRUARY



Iowa establishments expanded in May and added 5,500 jobs. This month's gain was the first since February and more than offsets losses of 3,500 jobs over the last two months. Aside from government, job growth was evident in most segments of the Iowa economy in May and was led by private services. Government shed 500 jobs due to larger than expected seasonal declines at the local level. Compared to last year, government trails last year's mark by 2,000 jobs due to reduced staffing levels at the local level.

Within private industries, trade and transportation added the most jobs this month (+2,400) due to hiring in both retail and wholesale trade. Transportation and utilities shed jobs in May, but remains up 2,500 jobs versus one year ago. Manufacturing added 2,300 jobs this month to help ease some of the recent losses plaguing this sector. Job gains were nearly split between both durable and nondurable goods factories. Some of the gain this month was due to a surge in hiring in food

manufacturing (+800). Smaller gains this month included other services (+1,000), professional and business services (+900), and financial activities (+600). Information services added jobs for the first time since January and increased by 300 jobs in May. Alternatively, job losses were led by leisure and hospitality (-1,200) with declines almost entirely focused in accommodations and food services. Construction experienced another small drop this month (-200) and follows another larger decline in April. The only other loss this month was in education and health care services due to a reduction in private education services.

Annually, nonfarm employment recovered this month and is up 15,200 jobs versus last May. Trade and transportation has been adding jobs lately in sales and leads all sectors with 7,100 total jobs gained. Education and health care is up 5,100 jobs due entirely to hiring in health care. Professional and business services has advanced steadily (+4,000) due mostly to hiring in

professional, scientific, and technical services. Despite a large gain this month, manufacturing continues to lead all sectors in jobs lost versus last May (-1,600). Durable goods factories have been responsible for all of the layoffs as nondurable goods factories have added jobs in food manufacturing and animal slaughtering and processing. Leisure and hospitality is down versus last year (-1,300) with losses being concentrated in accommodation and food services. Construction also trails last year's record highs due in part to the completion of a few large scale projects and is down (-1,100).

Nationally, nonfarm employment gained 138,000 jobs in May and has averaged just 121,000 jobs over the past three months. Job gains were highest in food services and drinking places and professional and business services.

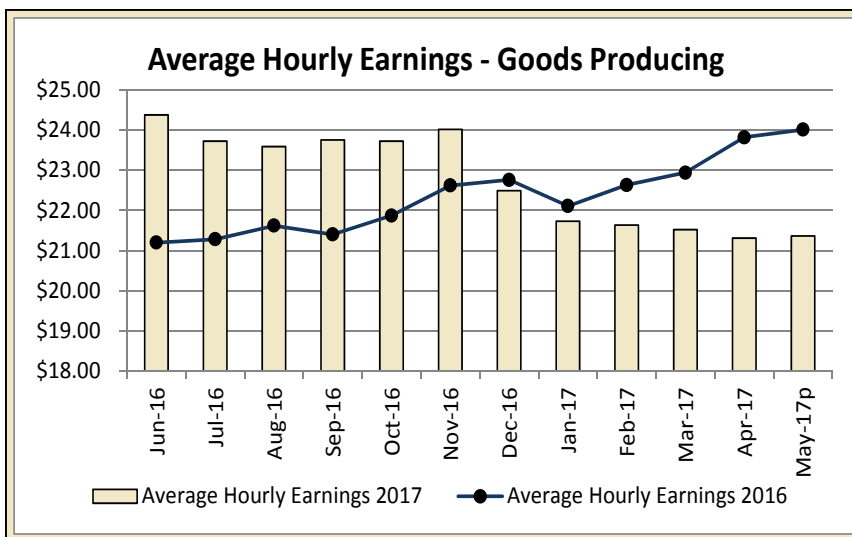
For additional information, contact James Morris (515-281-8515)

For additional information, contact James Morris (515-281-8515)

**METROPOLITAN STATISTICAL AREA
SEASONALLY ADJUSTED NONFARM EMPLOYMENT (TOTAL NONFARM)**

| MSA | May-16 | Jun-16 | Jul-16 | Aug-16 | Sep-16 | Oct-16 | Nov-16 | Dec-16 | Jan-17 | Feb-17 | Mar-17 | Apr-17 | May-17p |
|--------------------------|--------|--------|--------|--------|--------|--------|--------|--------|--------|--------|--------|--------|---------|
| AMES | 52.4 | 52.5 | 52.5 | 52.6 | 52.7 | 52.6 | 52.7 | 52.8 | 53.8 | 53.9 | 53.6 | 53.7 | 53.1 |
| CEDAR RAPIDS | 143.1 | 143.8 | 144.0 | 144.2 | 143.9 | 143.6 | 143.5 | 144.1 | 144.8 | 144.3 | 144.8 | 144.3 | 143.9 |
| DES MOINES/W. DES MOINES | 355.9 | 355.4 | 360.3 | 359.3 | 358.9 | 359.1 | 360.9 | 361.6 | 361.9 | 363.2 | 362.1 | 365.1 | 364.0 |
| DUBUQUE | 59.5 | 59.5 | 59.4 | 59.5 | 59.3 | 59.8 | 59.8 | 60.0 | 59.7 | 59.9 | 60.0 | 59.7 | 60.1 |
| IOWA CITY | 100.2 | 99.7 | 100.8 | 101.2 | 101.3 | 101.6 | 101.4 | 100.9 | 102.5 | 102.1 | 102.4 | 103.2 | 103.4 |
| SIOUX CITY | 89.6 | 89.3 | 89.1 | 88.6 | 88.1 | 87.5 | 87.7 | 87.8 | 88.2 | 88.5 | 88.4 | 88.2 | 89.2 |
| WATERLOO/CEDAR FALLS | 90.7 | 90.7 | 90.7 | 91.1 | 91.0 | 91.0 | 90.8 | 91.1 | 91.2 | 91.2 | 90.8 | 90.6 | 90.8 |

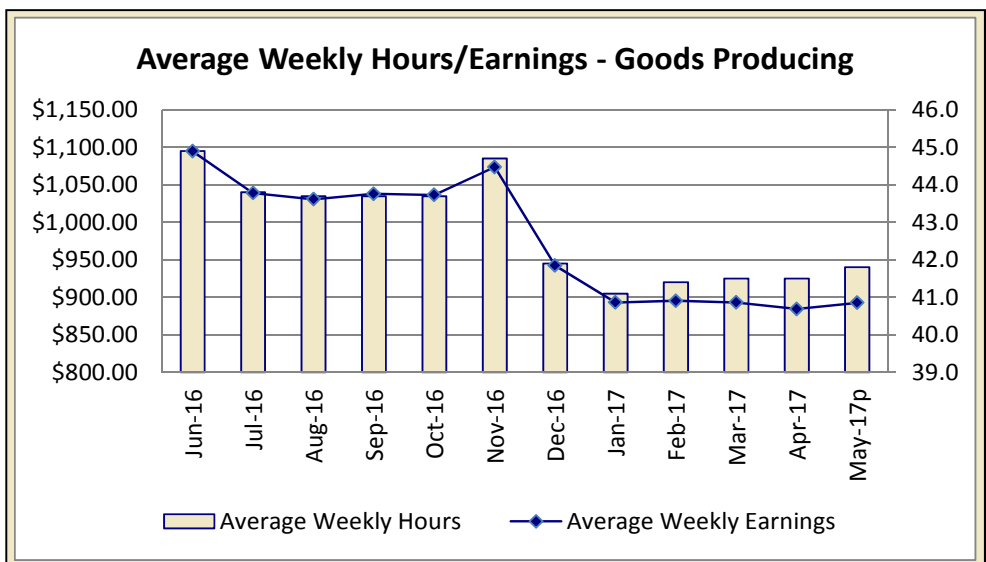
IOWA'S HOURS & EARNINGS



| Goods-producing Hours & Earnings | |
|----------------------------------|----------|
| Average Weekly Earnings | \$872.14 |
| Average Hourly Earnings | \$21.22 |
| Average Weekly Hours | 41.1 |

Production workers in Iowa's goods-producing sector averaged \$892.85 in May, down sharply versus last year's mark of \$1,020.43 due reductions in both hourly pay and hours worked. The drop was most evident in the construction sector where workers' weekly schedules have been dealing with a sharp decline in overtime hours worked. Production and nonsupervisory workers in construction averaged \$1,039.27 in May. Manufacturing workers averaged \$802.58 in May, up \$32.37 versus last year.

Retail workers saw some gains versus last year, earning \$25.14 more than one year ago and averaged \$382.26 in weekly pay. Finance workers weekly earnings of \$876.85 were \$29.96 less than last May.



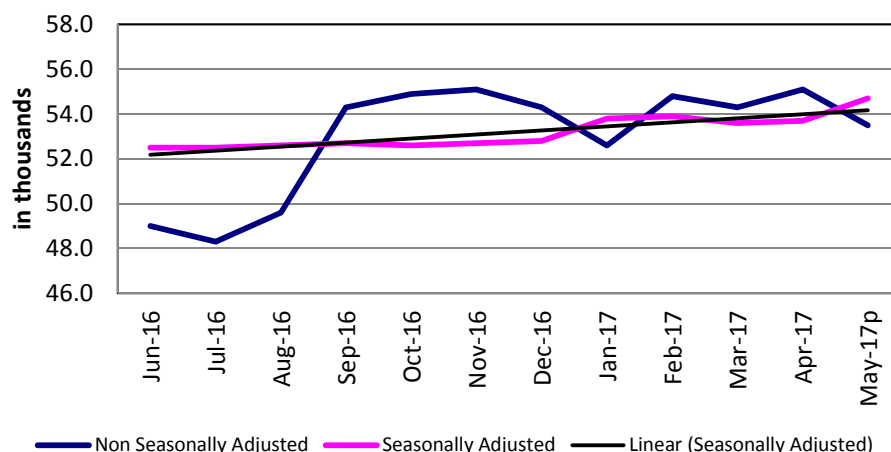
METROPOLITAN STATISTICAL AREAS

CLICK TABLE FOR DATA

**Ames MSA
Employment**

| | |
|--------------------------------------------------------|--------|
| Total Nonfarm 15p | 53,500 |
| Total Nonfarm 14 | 53,000 |
| % Change 1 Yr | 0.94% |
| Noteworthy Expanding and Contracting Industries (1 yr) | |
| State Government | 0.63% |
| Goods Producing | -2.99% |

p - preliminary data

Ames - Nonfarm Employment

The Ames metropolitan statistical area seasonally shed 1,600 jobs in May. The updated total nonfarm employment level of 53,500 jobs is 500 more than last year's mark. As expected, state government was down 1,400 jobs due to education employment breaking for the summer. Private services also shed jobs (-200), while goods producing industries were unchanged compared to April.

Annually, private services have gained 600 jobs and government is up 100 jobs at the state level. Conversely, goods producing industries have pared 200 jobs during that span.

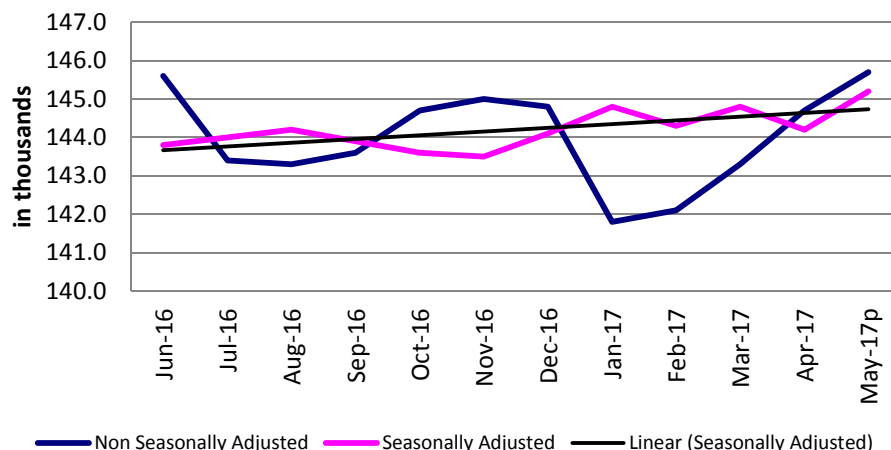
For additional information, contact James Morris (515-281-8515)

CLICK TABLE FOR DATA

**Cedar Rapids MSA
Employment**

| | |
|--------------------------------------------------------|---------|
| Total Nonfarm 15p | 145,700 |
| Total Nonfarm 14 | 143,800 |
| % Change 1 Yr | 1.32% |
| Noteworthy Expanding and Contracting Industries (1 yr) | |
| Nat Res & Construct | 10.00% |
| Information | -6.98% |

p - preliminary data

Cedar Rapids - Nonfarm Employment

The Cedar Rapids metropolitan statistical area added jobs for the fourth consecutive month, bringing total nonfarm employment to 145,700 jobs. With the exceptions of seasonal increases in natural resources and construction (+500) and leisure and hospitality (+400), individual industry gains were relatively small. All but three industries added employment.

Financial activities was unchanged, professional and business services pared 200 jobs and educational and health services shed 400 jobs. Job losses in educational and health services were largely seasonal in nature and the smallest April-to-May drop since 2004.

Over the year the area added 1,900 jobs, led by professional and business services and natural resources and construction, each adding 800 jobs. Information has pared 300 jobs from one year ago and educational and health services shed 200 jobs.

For additional information, contact Dennis Schwartz (515-281-5754)

CLICK TABLE FOR DATA

**Des Moines MSA
Employment**

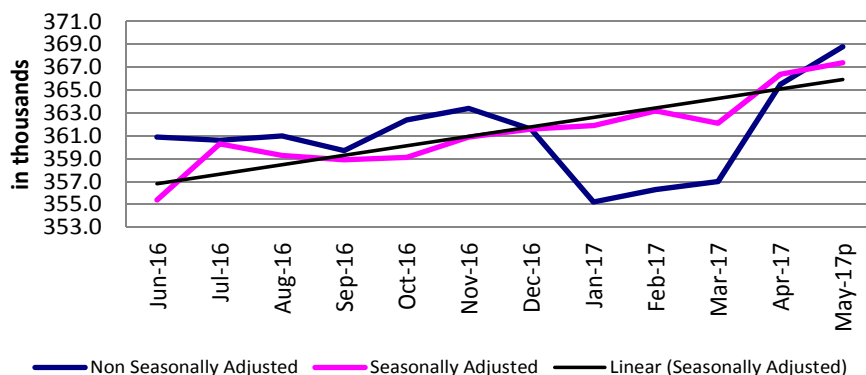
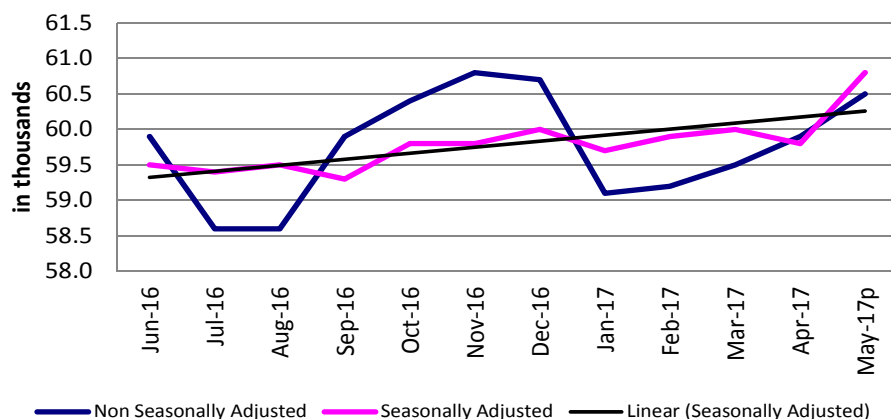
| | |
|--------------------------------------------------------|---------|
| Total Nonfarm 15p | 368,800 |
| Total Nonfarm 14 | 359,600 |
| % Change 1 Yr | 2.56% |
| Noteworthy Expanding and Contracting Industries (1 yr) | |
| Mining & Construct | 13.13% |
| Information | -5.88% |

p - preliminary data

Total nonfarm employment in the Des Moines Metropolitan Statistical Area added 3,300 jobs in May and now rests at 368,800 jobs. This month's increase is modest for the metro area, but does follow an unusually high increase last month. The largest increases this month were understandably in leisure and hospitality (+2,200) and related to recreational activities. Professional and business services also advanced again this month (+700) due in part to hiring in landscaping and lawn services. Construction was fueled by expansion within specialty trade contracting and gained 600 jobs in May. Virtually all sectors showed some improvement versus April, with the exceptions being education and health services (-300) and financial activities (-700).

Annually, total nonfarm employment has added 9,200 jobs. Private services have been responsible for nearly all of the gain; government is up a slight 200 jobs. Professional and business services have added the most jobs of any sector and are up 3,600 jobs versus last May. This month's increase marks the fourth-straight month for jobs being added in this sector. Construction has also fared well in the Des Moines area and is up 2,600 jobs. Specialty trade contractors alone are up 1,200 jobs. After this month's large gain, leisure and hospitality is up 2,200 jobs. The only sectors trending down over the last twelve months are information services (-400) and trade, transportation, and utilities (-200).

For additional information, contact James Morris (515-281-8515)

**Des Moines/West Des Moines Nonfarm
Employment****Dubuque Nonfarm Employment**

p - preliminary data

The Dubuque metro total nonfarm employment advanced by 600 jobs in May, lifting nonfarm employment up to 60,500 jobs. This month's gain is average by historical standards and leaves the metro area up 100 jobs versus last year.

Private services were partially fueled by hiring in retail and added 300 jobs in May. This month's increase follows a drop in April and leaves this segment of the Dubuque economy down 100 jobs annually. Goods producing industries added 100 jobs this month and are also up 100 jobs versus last May. Government added 200 jobs at the local level for summer projects and now rests up 100 jobs annually.

For additional information, contact James Morris (515-281-8515)

CLICK TABLE FOR DATA

**Dubuque MSA
Employment**

| | |
|--------------------------------------------------------|--------|
| Total Nonfarm 15p | 60,500 |
| Total Nonfarm 14 | 60,400 |
| % Change 1 Yr | 1.00% |
| Noteworthy Expanding and Contracting Industries (1 yr) | |
| Local Government | 2.27% |
| Retail Trade | -2.78% |

CLICK TABLE FOR DATA

**Iowa City MSA
Employment**

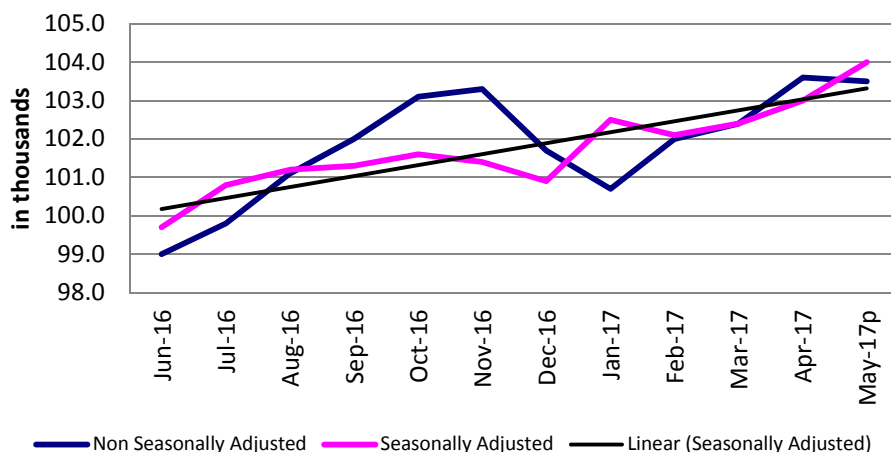
| | |
|-------------------------------------------------|---------|
| Total Nonfarm 15p | 103,500 |
| Total Nonfarm 14 | 100,200 |
| % Change 1 Yr | 3.29% |
| Noteworthy Expanding and Contracting Industries | |
| State Government | 6.69% |
| Leisure & Hospitality | 0.98% |

p - preliminary data

Nonfarm employment in the Iowa City metropolitan statistical area dropped 100 jobs from last month due to a seasonal decline in state government employment (-900). Several industries added jobs, partially offsetting the loss in state government. The larger of those gains include 200 additional jobs in trade, transportation and warehousing, 200 jobs in leisure and hospitality, and 200 jobs in goods producing industries.

The metro area has added 3,300 jobs from one year ago, boosted by gains of 2,000 in government and 1,200 in private service-providing sectors. Professional and business services and trade, transportation and warehousing each added 300 jobs. Goods producing industries added only 100 jobs.

For additional information, contact Dennis Schwartz (515-281-5754)

Iowa City Nonfarm Employment

CLICK TABLE FOR DATA

**Sioux City MSA
Employment**

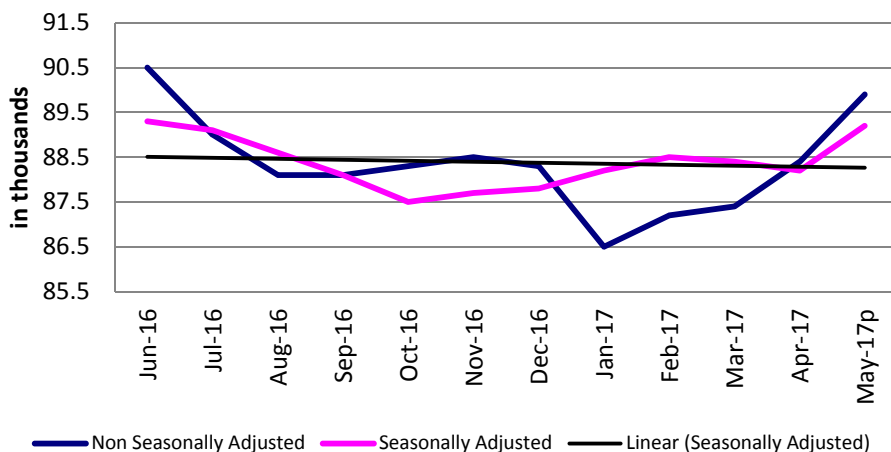
| | |
|-------------------------------------------------|--------|
| Total Nonfarm 15p | 89,900 |
| Total Nonfarm 14 | 90,800 |
| % Change 1 Yr | -0.99% |
| Noteworthy Expanding and Contracting Industries | |
| Trade & Transport | 2.56% |
| Leisure & Hospitality | -5.56% |

p - preliminary data

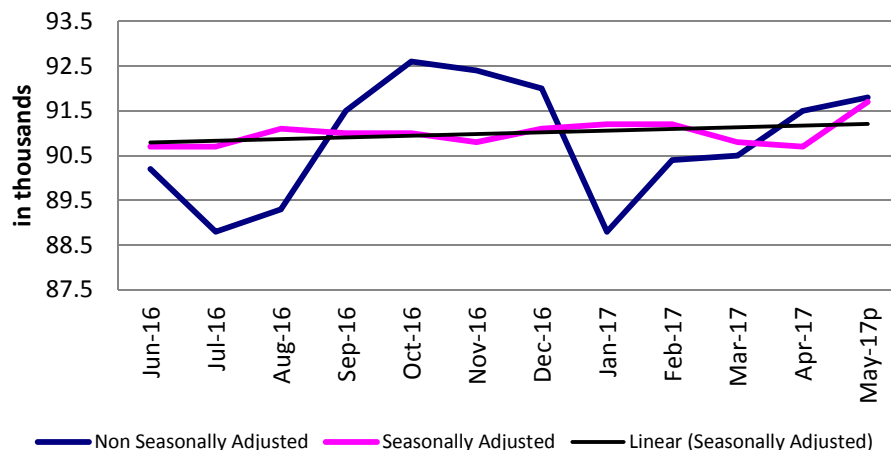
Employment in the Sioux City MSA is up 1,500 jobs from April. Leisure and hospitality and manufacturing each added 300 jobs. The employment increase in manufacturing was due to a gain of 400 in non-durable goods manufacturing and was partially offset by a decline of 100 jobs in durable goods. Government, and trade, transportation and warehousing each added 200 jobs.

Overall, the area has 900 fewer jobs from one year ago. Goods producing sectors have pared 600 jobs, although manufacturing has added 100 jobs. Trade, transportation and warehousing added 500 jobs and professional and business services added 200 jobs. Leisure and hospitality shed 500 jobs and government is unchanged.

For additional information, contact Dennis Schwartz (515-281-5754)

Sioux City Nonfarm Employment

Waterloo/Cedar Falls Nonfarm Employment



[CLICK TABLE FOR DATA](#)

Waterloo/Cedar Falls MSA Employment

| | |
|-------------------------------------------------|--------|
| Total Nonfarm 15p | 91,800 |
| Total Nonfarm 14 | 91,500 |
| % Change 1 Yr | 0.33% |
| Noteworthy Expanding and Contracting Industries | |
| State Government | 8.16% |
| Durable Goods Mfg | -3.54% |

p - preliminary data

The Waterloo/Cedar Falls metropolitan statistical area's total nonfarm employment gained 300 jobs from the previous month and stands at 91,800. The over-the-month change is slightly below the 10-year average April-to-May change.

Employment levels changed in every sector except professional and business services. Goods producing industries added 300 jobs, with 100 of those jobs in manufacturing. Leisure and hospitality added 200 seasonal jobs. Trade, transportation and warehousing endured the greatest jobs loss, paring 400 jobs. Government, educational and health services and financial activities each shed 100 jobs.

Over the year, employment is up 300 jobs. Government and trade, transportation and warehousing each added 400 jobs. However, losses in manufacturing (-300), financial activities (-100) and leisure and hospitality (-100) offset the bulk of those gains.

For additional information, contact Dennis Schwartz (515-281-5754)

[LINKS TO ADDITIONAL INFORMATION](#)

Click on a link below to visit web page

[Worker Adjustment & Retraining Notification Act \(WARN\)](#)

[U.S. Bureau of Labor Statistics](#)

[Unemployment Insurance Benefit Payments](#)

[Consumer Price Index \(CPI\)](#)

[Unemployment Insurance Benefit Paid by County](#)

[Employment Statistics for Canada](#)

[Current Employment Statistics](#)

Each month the **Current Employment Statistics** program surveys about 143,000 businesses and government agencies, representing approximately 588,000 individual worksites, in order to provide detailed industry data on employment, hours, and earnings of workers on nonfarm payrolls for all 50 States, the District of Columbia, Puerto Rico, the Virgin Islands, and about 450 metropolitan areas and divisions.

[Contact Information](#)

Iowa Workforce Development
Employment Statistics Bureau
1000 East Grand Avenue
Des Moines, IA 50319-0209
Tel: 515-281-8515
Tel: 800-532-9793
Fax: 515-281-8195
Email: trends@iowa.gov
www.iowaworkforce.org

Equal opportunity employer/program. Auxiliary aids and services are available upon request to individuals with disabilities. For deaf and hard of hearing, use Relay 711