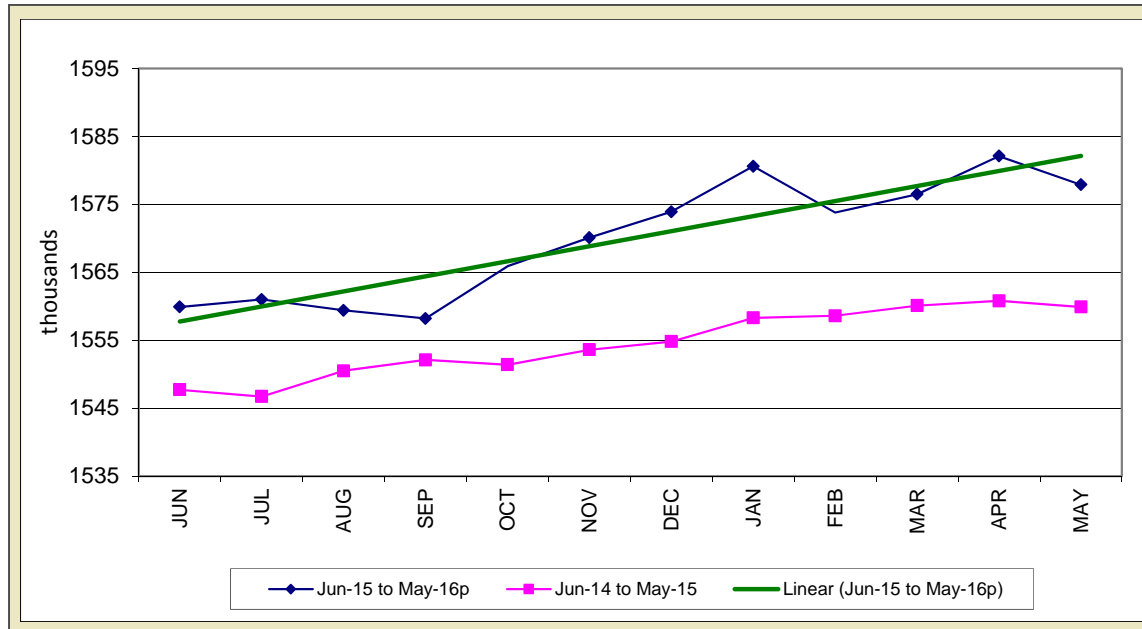


STATE OF IOWA NONFARM EMPLOYMENT WORKFORCE DEVELOPMENT

MAY 2016
LMR MONTHLY

NONFARM EMPLOYMENT SLIPS FOR SECOND TIME THIS YEAR



Total nonfarm employment shed 4,200 jobs in May and now rests at 1,577,900. The decrease is the second for 2016 and is primarily due to cut backs in goods producing sectors. Service industries were nearly unchanged versus April. Private industry shed a combined 3,700 jobs and government was reduced by 500. The loss in government was due to drops in local and state government and was partially offset by a gain of 200 at the federal level. Compared to last year, government remains up 2,100 jobs.

Manufacturing experienced a sharp decline this month in durable goods factories with 2,700 jobs pared overall. This sector has been steadily trending down and dealing with reduced demand forecasts for machinery and transportation products. Construction also experienced a reduction in May (-1,400); however, this drop follows very

large gains in March and April which saw a combined 6,900 jobs added, so this month's decline may represent a seasonal shift. Other sectors losing jobs this month included professional and business services (-600) and financial activities (-500). Alternatively, gains were sporadic in May and were led by education and health services (+700). Private education fueled the growth this month as health care shed 200 jobs. Trade and transportation was buoyed by hiring in wholesale and retail trade this month and added 300 jobs. Information, other services, and leisure and hospitality also trended up slightly.

Annually, nonfarm employment remains up 18,000 jobs or 1.2 percent. Despite a drop this month, construction leads all sectors in both jobs gained (+10,400) and by percentage increase (+13.4). Education and health services has also fared well annually (+5,700) due

mostly to hiring in private health care. Losses are still being fueled by durable goods manufacturing (-7,300) which has added jobs just once since January of 2015. Other sectors paring jobs annually were professional and business services and information, each down 1,700 jobs.

Nationally, nonfarm employment posted an anemic 38,000 jobs added in May. Job growth was light in most industries with the exception of health care (+46,000). Losses were fueled by information services (-34,000) and largely related to large-scale strike. The annual growth rate of 1.7 percent is 0.5 percent higher than Iowa.

For additional information, contact James Morris (515-281-8515)

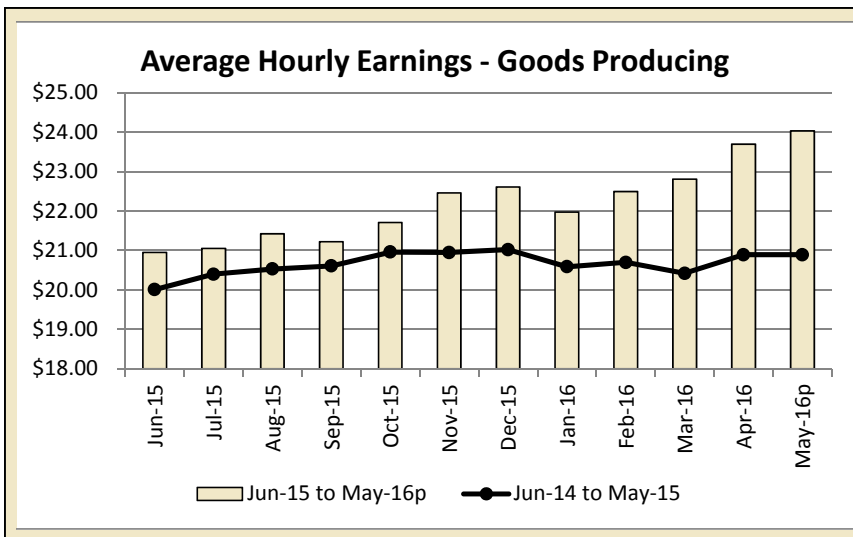
For additional information, contact James Morris (515-281-8515)

**METROPOLITAN STATISTICAL AREA
SEASONALLY ADJUSTED NONFARM EMPLOYMENT (TOTAL NONFARM)**

MSA	May-15	Jun-15	Jul-15	Aug-15	Sep-15	Oct-15	Nov-15	Dec-15	Jan-16	Feb-16	Mar-16	Apr-16	May-16p
AMES	52.7	52.1	52.1	52.6	52.8	52.8	52.8	52.8	53.1	53.2	52.7	53.6	53.5
CEDAR RAPIDS	143.1	143.2	143.5	144.0	143.1	142.7	143.0	143.1	144.9	144.0	144.5	144.1	143.5
DES MOINES/W. DES MOINES	348.5	349.3	350.6	350.1	349.2	349.2	349.8	350.0	352.0	349.6	349.0	352.1	353.5
DUBUQUE	59.8	59.5	59.8	59.8	60.1	60.2	60.1	60.3	60.5	60.3	60.6	60.4	60.7
IOWA CITY	98.2	98.4	98.6	98.6	98.4	98.9	98.9	99.2	99.1	99.4	99.6	99.9	98.5
SIoux CITY *													
WATERLOO/CEDAR FALLS	91.1	91.1	91.1	91.1	90.7	90.5	90.6	90.7	91.4	90.7	90.7	90.9	90.5

* Seasonally adjusted data for the Sioux City MSA is not available due to redefinition of the metropolitan area to now include Plymouth County

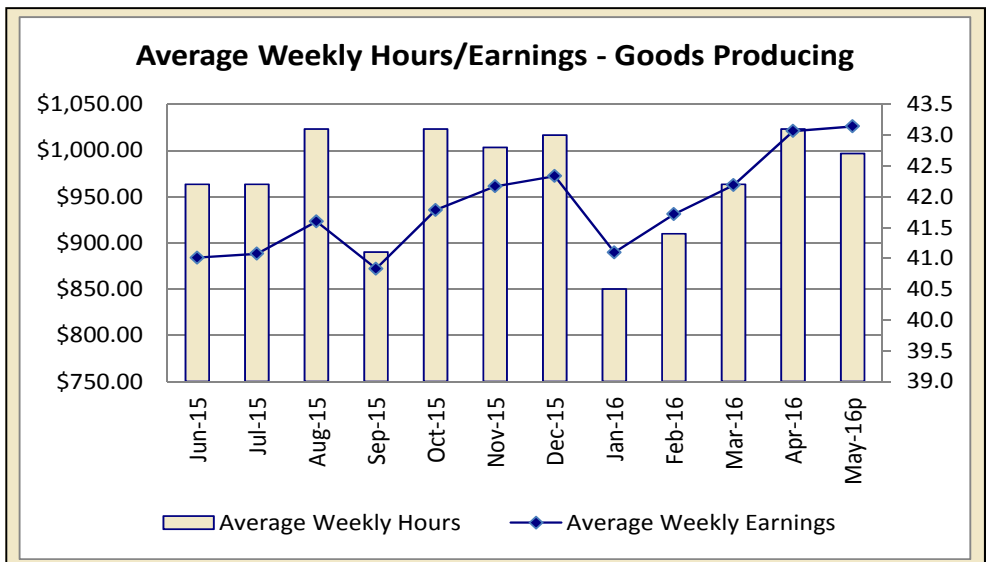
IOWA'S HOURS & EARNINGS



Goods-producing Hours & Earnings	
Average Weekly Earnings	\$1,026.08
Average Hourly Earnings	\$24.03
Average Weekly Hours	42.7

Production workers in Iowa's goods-producing sectors averaged \$1,026.08 in May, up slightly versus April and \$150.79 more than one year ago. The annual gain is primarily due to increased overtime hours worked within construction. Overall, construction workers are averaging over four hours overtime per week, up three hours versus one year ago. Manufacturing production workers have actually shed hours versus last year and are earning \$33.35 less than last May.

Among service sectors, finance workers added an hour to their weekly schedules and saw their earnings increase to \$937.27 in May, up \$69.79 versus last year. Retail workers saw little monthly movement in May, but are up \$16.06 compared to last May.



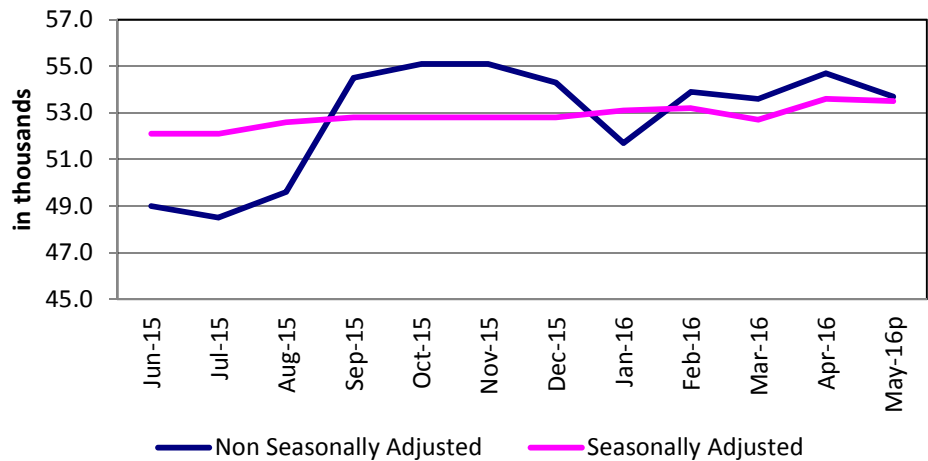
METROPOLITAN STATISTICAL AREAS

[CLICK TABLE FOR DATA](#)

Ames MSA Employment	
Total Nonfarm 15p	53,700
Total Nonfarm 14	53,200
% Change 1 Yr	0.94%
Noteworthy Expanding and Contracting Industries (1 yr)	
Pvt Service Provide	2.47%
Goods Producing	-1.41%

p - preliminary data

Ames - Nonfarm Employment



The Ames Metro area seasonally pared 1,000 jobs, reducing employment down to 53,700 jobs. The Ames area is heavily tied to education, so when the school year concludes employment is typically shed for the summer, so this month's decline is somewhat expected. The metro area remains up 500 jobs versus last May.

As expected, government shed jobs this month (-1,100) due to the ending of the spring semester and is unchanged versus last year. Private services lost 200 jobs but remain up 600 compared to last May. Goods producing industries added jobs this month (+300) but are down slightly annually (-100).

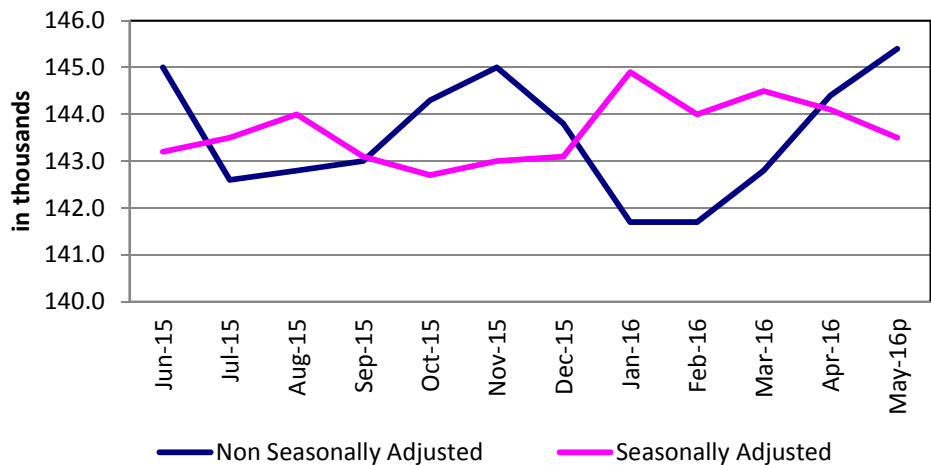
For additional information, contact James Morris (515-281-8515)

[CLICK TABLE FOR DATA](#)

Cedar Rapids MSA Employment	
Total Nonfarm 15p	145,400
Total Nonfarm 14	143,800
% Change 1 Yr	1.11%
Noteworthy Expanding and Contracting Industries (1 yr)	
Other Services	3.77%
Information	-6.67%

p - preliminary data

Cedar Rapids - Nonfarm Employment



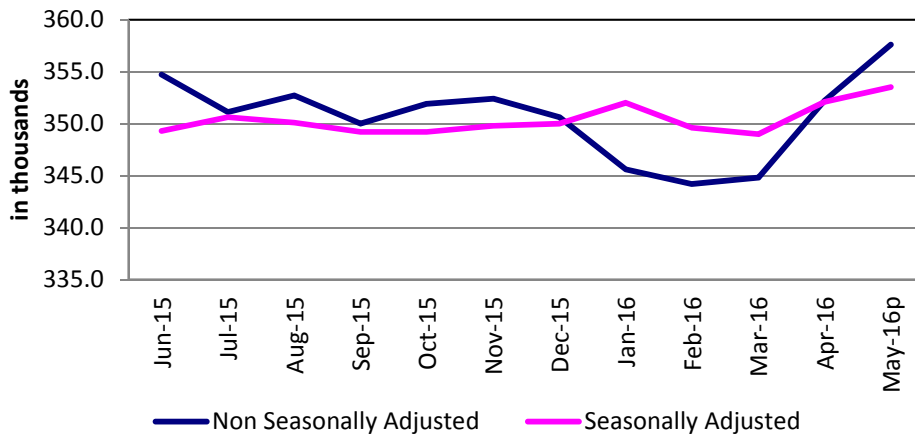
The Cedar Rapids metropolitan statistical area added 1,000 nonfarm jobs from April, bringing employment to 145,400. Total nonfarm employment in the metro area is 1,600 above one year ago.

Leisure and hospitality led all sectors with an over-the-month gain of 400 jobs. This sector has enjoyed four consecutive months of gains, mostly seasonal in nature. Government added 300 jobs due to gains in local government as local entities gear up for more outdoor activities. Construction and trade, transportation and warehousing each added 200 jobs this month. The only sector to shed jobs this month was educational and health services which decreased 300.

Over the year, trade, transportation and warehousing, educational and health services and professional and business services have each added jobs (800, 500 and 400, respectively). Natural resources and construction has 200 fewer jobs than last year. Manufacturing has added 100 jobs, although durable goods manufacturing is down 300 jobs.

For additional information, contact Dennis Schwartz (515-281-5754)

**Des Moines/West Des Moines -
Nonfarm Employment**



[CLICK TABLE FOR DATA](#)

Des Moines MSA Employment	
Total Nonfarm 15p	357,600
Total Nonfarm 14	352,800
% Change 1 Yr	1.36%
Noteworthy Expanding and Contracting Industries (1 yr)	
Financial Activities	4.85%
State Government	-6.41%

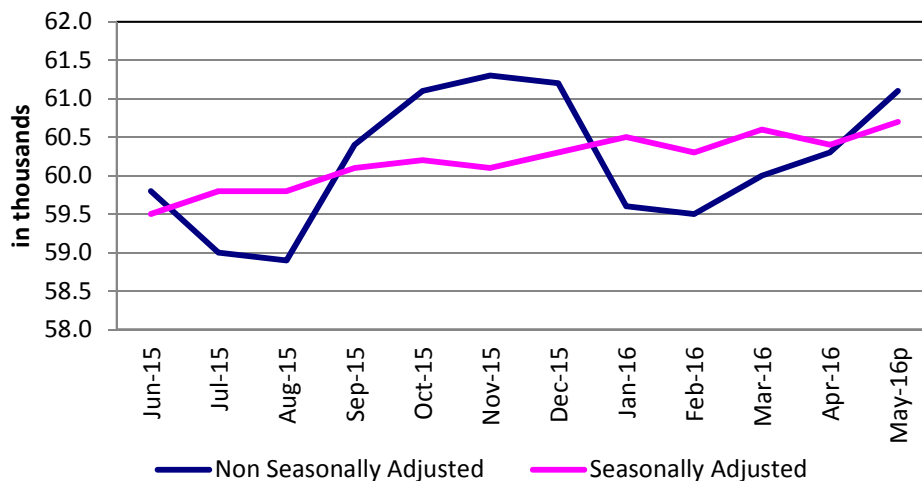
p - preliminary data

The Des Moines metro area added 5,400 jobs in May and now stands at 357,600 jobs. The increase is the third consecutive and isn't too surprising as the spring months are typically a time when the MSA ramps up employment for the summer. The largest gains were in leisure and hospitality (+2,300) and largely related to recreational industries. Trade and transportation also had some seasonal expansion this month, as did construction and government. The only sector to shed jobs versus April was professional and business services (-100).

Annually, nonfarm employment is up 4,800 jobs versus last May. Finance has steadily bolstered staffing levels over the past several months and is up 2,600 jobs annually. Trade and transportation is up 1,000 jobs due to hiring in transportation and retail. Construction is up 700 jobs due mostly to increased demand for specialty trade contracting. The only sectors not faring well over the past year are government (-300) and information services (-200).

For additional information, contact James Morris (515-281-8515)

Dubuque - Nonfarm Employment



[CLICK TABLE FOR DATA](#)

Dubuque MSA Employment	
Total Nonfarm 15p	61,100
Total Nonfarm 14	60,900
% Change 1 Yr	1.33%
Noteworthy Expanding and Contracting Industries (1 yr)	
Pvt Service Provide	1.14%
Goods Producing	-3.28%

p - preliminary data

The Dubuque Metro gained 800 jobs in May, lifting total nonfarm employment to 61,100 jobs. For the past three months, the area has experienced only modest seasonal gains and now rests just 200 jobs over the mark set last May.

Private services added 400 jobs this month and were partially lifted by hiring in retail. This sector is now up 500 versus one year ago. Goods producing industries combined to add 200 jobs this month but trail the mark established last year by 400 jobs. Government seasonally gained 200 jobs this month and is up 100 versus last May.

For additional information, contact James Morris (515-281-8515)

[CLICK TABLE FOR DATA](#)

Iowa City MSA Employment	
Total Nonfarm 15p	99,900
Total Nonfarm 14	98,800
% Change 1 Yr	1.11%
Noteworthy Expanding and Contracting Industries	
Retail Trade	3.96%
Goods-producing	-1.96%

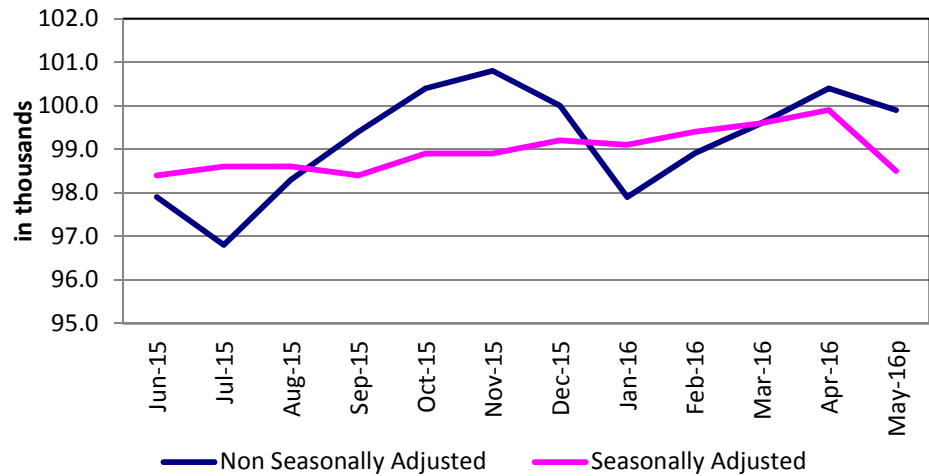
p - preliminary data

Nonfarm employment in the Iowa City metropolitan statistical area is down 500 jobs from last month due to job losses in both service-providing and government sectors. Government shed 1,000 jobs due to seasonal declines. Leisure and hospitality experienced a seasonal gain of 300 jobs.

The metro area has added 1,100 jobs from one year ago with gains in nearly every sector. Goods producing is the exception to the job increases seen in other sectors, with a decline of 200 jobs.

For additional information, contact Dennis Schwartz (515-281-5754)

Iowa City - Nonfarm Employment



[CLICK TABLE FOR DATA](#)

Sioux City MSA Employment	
Total Nonfarm 15p	89,200
Total Nonfarm 14	88,500
% Change 1 Yr	0.79%
Noteworthy Expanding and Contracting Industries	
Trade & Transport	3.61%
Manufacturing	-1.32%

p - preliminary data

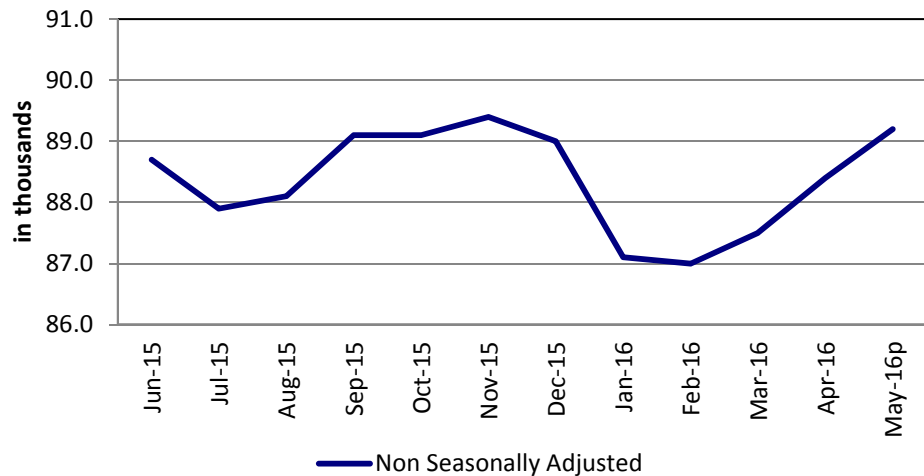
The Sioux City MSA has been redefined. It now includes: Dixon and Dakota Counties in Nebraska, Union County in South Dakota, and Woodbury and Plymouth Counties in Iowa.

Employment in the Sioux City MSA added 800 jobs from April, driven by additions in leisure and hospitality (+400) and trade, transportation and warehousing (+300). Government also added 100 jobs. Manufacturing and professional and business services were unchanged.

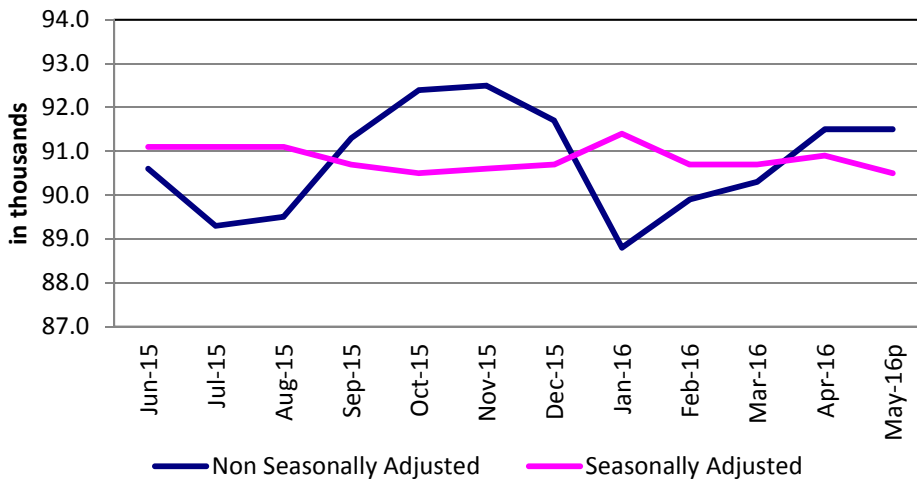
Overall, the area has added 700 jobs from one year ago. Manufacturing is down 200 jobs, although non-durable goods manufacturing has added 300 jobs. Trade, transportation and warehousing has added 700 jobs and leisure and hospitality added 200 jobs.

For additional information, contact Dennis Schwartz (515-281-5754)

Sioux City - Nonfarm Employment



Waterloo/Cedar Falls - Nonfarm Employment



[CLICK TABLE FOR DATA](#)

Waterloo/Cedar Falls MSA Employment	
Total Nonfarm 15p	91,500
Total Nonfarm 14	92,300
% Change 1 Yr	-0.87%
Noteworthy Expanding and Contracting Industries	
Health Care & Soc	0.83%
Retail Trade	-3.70%

p - preliminary data

The Waterloo/Cedar Falls metropolitan statistical area's total nonfarm employment is unchanged from the previous month and stands at 91,500. Job gains were restricted to leisure and hospitality, which enjoyed an increase of 200 jobs. Manufacturing shed 200 jobs, all in durable goods manufacturing.

Over the year, employment is down 800 jobs, with trade, transportation and warehousing experiencing the greatest loss, shedding 500 jobs. Manufacturing and professional and business services each pared 200 jobs. Educational and health services is the only sector with a jobs gain from one year ago, adding 100 jobs.

For additional information, contact Dennis Schwartz (515-281-5754)

LINKS TO ADDITIONAL INFORMATION

Click on a link below to visit web page

[Worker Adjustment & Retraining Notification Act \(WARN\)](#)

[U.S. Bureau of Labor Statistics](#)

[Unemployment Insurance Benefit Payments](#)

[Consumer Price Index \(CPI\)](#)

[Unemployment Insurance Benefit Paid by County](#)

[Employment Statistics for Canada](#)

Current Employment Statistics

Each month the **Current Employment Statistics** program surveys about 143,000 businesses and government agencies, representing approximately 588,000 individual worksites, in order to provide detailed industry data on employment, hours, and earnings of workers on nonfarm payrolls for all 50 States, the District of Columbia, Puerto Rico, the Virgin Islands, and about 450 metropolitan areas and divisions.

Contact Information

Iowa Workforce Development
 Employment Statistics Bureau
 1000 East Grand Avenue
 Des Moines, IA 50319-0209
 Tel: 515-281-8515
 Tel: 800-532-9793
 Fax: 515-281-8195
 Email: trends@iowa.gov
 www.iowaworkforce.org

Equal opportunity employer/program. Auxiliary aids and services are available upon request to individuals with disabilities. For deaf and hard of hearing, use Relay 711