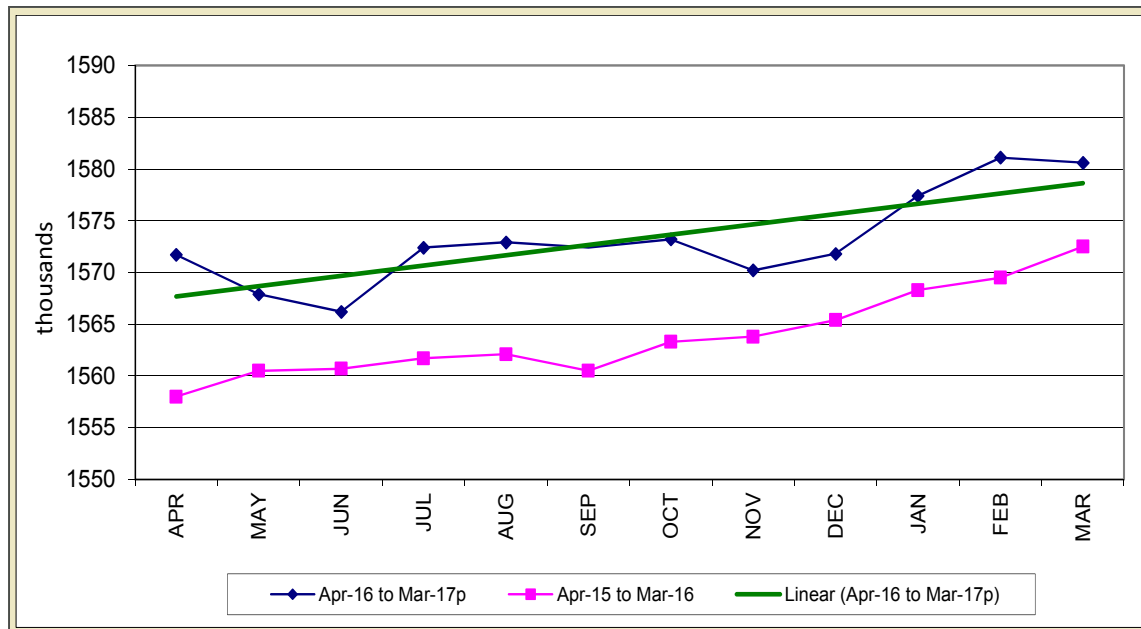


STATE OF IOWA NONFARM EMPLOYMENT WORKFORCE DEVELOPMENT

MARCH 2017
LMR MONTHLY

3-MONTH EMPLOYMENT GAIN ENDS WITH SMALL SETBACK



Iowa businesses pared jobs for the first time since November, lowering total nonfarm employment down to 1,580,600 jobs. This month's decline was small in magnitude (-500), and generally due to losses in the private services sector. Government also contributed to this month's drop with 500 jobs lost this month. Public sectors now lag behind last year's mark by 700 jobs, whereas the state combined is up 8,100 jobs versus last March.

Within private sectors, leisure and hospitality posted the largest decline this month (-2,000). All of the losses in this sector this month were posted in arts, entertainment, and recreation. Accommodations and food services were unchanged since February. Most other sector declines this month were minor and included losses of 200 jobs in trade, transportation, and warehousing. This sector was hampered by larger than expected

cutbacks in retail trade. Information services and professional and business services each shed 100 jobs in March. Job gains were led by construction (+1,100). This sector has added 2,700 jobs since January. Education and health services increased this month (+700) and have added jobs for four consecutive months. Several sectors experienced incremental gains including manufacturing, finance, mining, and other services.

Annually, six of the ten private sectors have added jobs, led by professional and business services (+4,400). These gains have been fueled by increased staffing in administrative support and waste management services (+2,700). Education and health services have advanced steadily (+3,500), and finance has added jobs consistently since August and is up 3,100 jobs. Alternatively, losses continue to be led by

manufacturing (-3,600) and primarily the result of cutbacks in durable goods factories (-3,100). Construction regressed slightly from last year's historic highs and actually trails last year's mark by 2,000 jobs. Information continues to reorganize and streamline services and is down 1,300 jobs versus one year ago.

Nationally, total nonfarm employment increased just 98,000 jobs in March. The largest gains were in professional and business services and mining. Retail trade pared jobs in March, while many sectors were generally flat compared to February. The annual growth rate for the U.S. of 1.5 percent is a full percentage point higher than that of Iowa (1.0 percent).

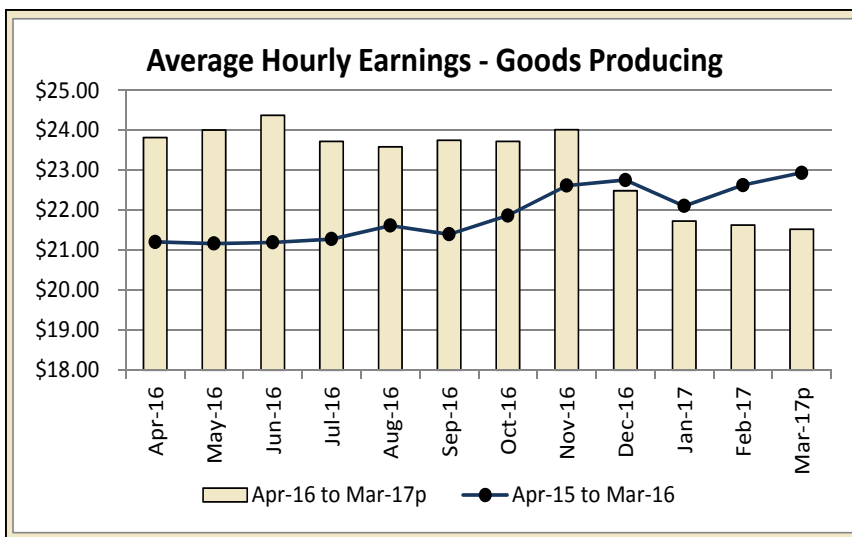
For additional information, contact James Morris (515-281-8515)

For additional information, contact James Morris (515-281-8515)

**METROPOLITAN STATISTICAL AREA
SEASONALLY ADJUSTED NONFARM EMPLOYMENT (TOTAL NONFARM)**

MSA	Mar-16	Apr-16	May-16	Jun-16	Jul-16	Aug-16	Sep-16	Oct-16	Nov-16	Dec-16	Jan-17	Feb-17	Mar-17p
AMES	52.6	52.7	52.4	52.5	52.5	52.6	52.7	52.6	52.7	52.8	53.8	53.9	53.5
CEDAR RAPIDS	144.3	143.9	143.1	143.8	144.0	144.2	143.9	143.6	143.5	144.1	144.8	144.3	145.1
DES MOINES/W. DES MOINES	356.2	356.3	355.9	355.4	360.3	359.3	358.9	359.1	360.9	361.6	361.9	363.2	361.8
DUBUQUE	60.3	59.8	59.5	59.5	59.4	59.5	59.3	59.8	59.8	60.0	59.7	59.9	60.1
IOWA CITY	99.6	100.0	100.2	99.7	100.8	101.2	101.3	101.6	101.4	100.9	102.5	102.1	102.3
SIOUX CITY	89.8	90.3	89.6	89.3	89.1	88.6	88.1	87.5	87.7	87.8	88.2	88.5	88.4
WATERLOO/CEDAR FALLS	90.9	91.2	90.7	90.7	90.7	91.1	91.0	91.0	90.8	91.1	91.2	91.2	90.9

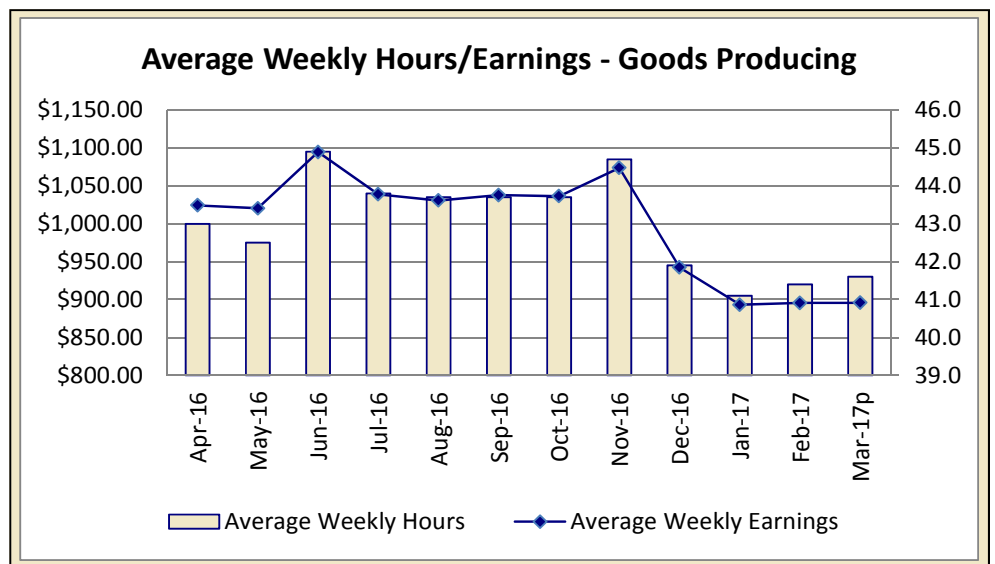
IOWA'S HOURS & EARNINGS



Goods-producing Hours & Earnings	
Average Weekly Earnings	\$895.65
Average Hourly Earnings	\$21.53
Average Weekly Hours	41.6

Production workers in Iowa's goods-producing sector averaged \$895.65 in March, down \$70.12 compared to last year. Workers in Iowa's manufacturing sector saw a gain of \$40.14 in their weekly pay versus last year and averaged \$800.47 in March per week. Production workers in construction averaged \$1,063.07 per week in March, which is over two hundred dollars less annually and due to a reduction in overtime hours worked compared to last year.

Among service sectors, production workers in Iowa's retail sector averaged \$375.29 in March, up \$22.21 compared to last year. Financial workers experienced a decrease compared to last year's wages, possibly due to the addition of lower-wage workers being added to the pool, and averaged \$864.43 per week.



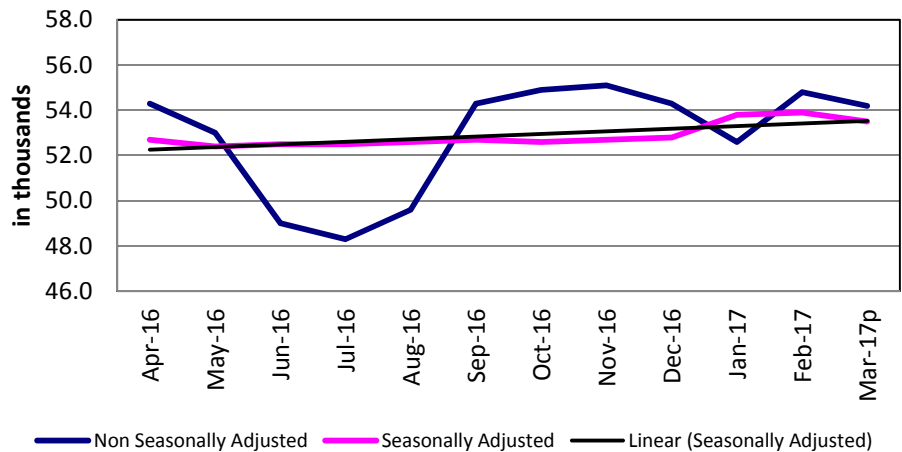
METROPOLITAN STATISTICAL AREAS

[CLICK TABLE FOR DATA](#)

Ames MSA Employment	
Total Nonfarm 15p	54,200
Total Nonfarm 14	53,200
% Change 1 Yr	1.88%
Noteworthy Expanding and Contracting Industries (1 yr)	
State Government	3.03%
Goods Producing	1.56%

p - preliminary data

Ames - Nonfarm Employment



The Ames metro area shed 600 jobs in March and rests at 54,200 jobs. Historically, the Ames area can expect some seasonal drop during March, although this month's loss is slightly more than expected. Government shed 500 jobs and goods producing industries lost 100 jobs. Private services were unchanged this month.

Over the past twelve months, the Ames metro is up 1,000 jobs. Private services have added 600 jobs to lead all sectors. Government follows closely behind with 500 jobs gained. Goods producing industries are down a slight 100 jobs.

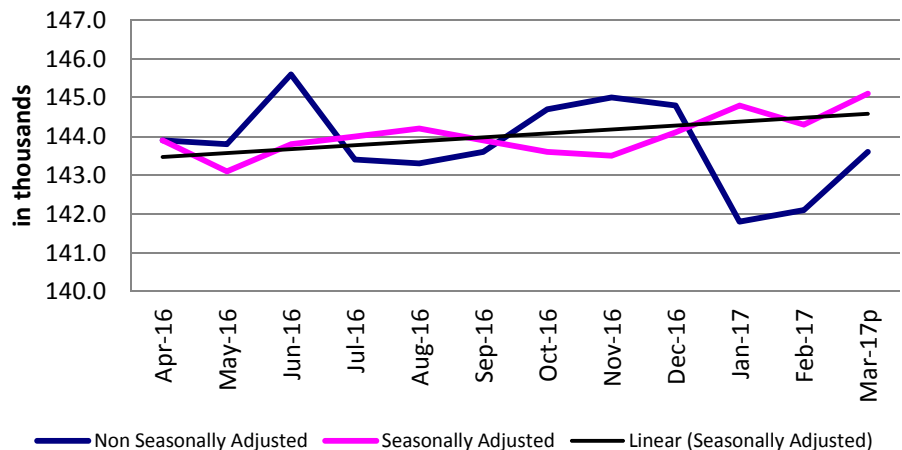
For additional information, contact James Morris (515-281-8515)

[CLICK TABLE FOR DATA](#)

Cedar Rapids MSA Employment	
Total Nonfarm 15p	143,600
Total Nonfarm 14	143,000
% Change 1 Yr	0.42%
Noteworthy Expanding and Contracting Industries (1 yr)	
Prof & Business Svcs	8.82%
Information	-6.98%

p - preliminary data

Cedar Rapids - Nonfarm Employment



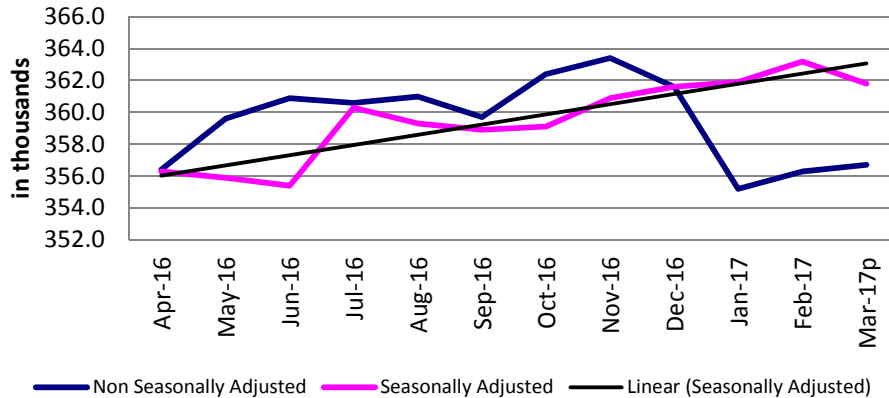
The Cedar Rapids metropolitan statistical area's nonfarm employment is 143,600 after adding 1,500 jobs from February. Natural resources and construction provided a boost with its first increase of the year, an additional 400 jobs. The industry is 500 above one year ago.

Professional and business services added 300 jobs over the month, the third consecutive month of gains for the industry. With 1,200 more jobs than one year ago, the industry leads all sectors in over-the-year gains. Several industries had smaller gains this month. Financial activities has maintained its employment level within ±100 jobs for the past 15 months. There are no sectors with over-the-month jobs losses.

Over the year the area added 600 jobs, led by professional and business services. Other notable changes include a gain of 500 in natural resources and construction and a loss of 500 jobs in educational and health services.

For additional information, contact Dennis Schwartz (515-281-5754)

Des Moines/West Des Moines Nonfarm Employment



[CLICK TABLE FOR DATA](#)

Des Moines MSA Employment	
Total Nonfarm 15p	356,700
Total Nonfarm 14	351,600
% Change 1 Yr	1.45%
Noteworthy Expanding and Contracting Industries (1 yr)	
Mining & Construct	8.99%
Information	-7.35%

p - preliminary data

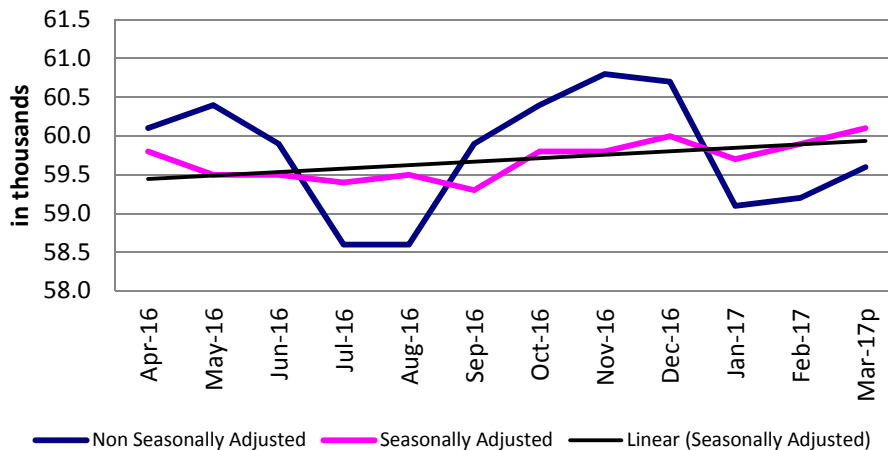
Total nonfarm employment in the Des Moines Metropolitan Statistical Area increased slightly in March (+400) and lifted the total number of jobs to 356,700. This new total is 5,100 jobs higher than last March and due entirely to expansion in the private sector. Government pared 300 jobs this month, but remains unchanged versus one year ago.

The largest gain this month was a seasonal increase in mining, logging, and construction (+400). Leisure and hospitality also experienced some seasonal gains (+300), although full-service restaurants gained jobs as well. Other sectors bolstering employment this month included trade, transportation, and utilities (+200) and professional and business services (+200). Excluding government, losses were generally slight and led by financial activities (-200). Minor declines of 100 were also evident in information services and education and health services.

Annually, most sectors have added jobs. No sector has added more employment than professional and business services since last March (+1,700). Construction remains markedly up (+1,600) due to strong hiring within specialty trade contractors (+1,300). Leisure and hospitality also posted a sharp increase over the past twelve months (+1,300). Annual losses have been limited to just two sectors: information (-500) and trade, transportation, and utilities (-300).

For additional information, contact James Morris (515-281-8515)

Dubuque Nonfarm Employment



[CLICK TABLE FOR DATA](#)

Dubuque MSA Employment	
Total Nonfarm 15p	59,600
Total Nonfarm 14	59,700
% Change 1 Yr	0.68%
Noteworthy Expanding and Contracting Industries (1 yr)	
Government	2.08%
Retail Trade	-1.43%

p - preliminary data

The Dubuque metro total nonfarm employment gained 400 jobs in March and now rests at 59,600 jobs. This month's increase is average with the prior ten years and was primarily fueled by hiring in private services (+300). Good producing industries also increased slightly due to seasonal hiring in construction (+100). Government was unchanged since February.

Annually, the Dubuque metro area trails last year's level by 100 jobs. Private services are cumulatively down 300 jobs, although both government and goods producing industries have added 100 jobs to help offset the loss.

For additional information, contact James Morris (515-281-8515)

[CLICK TABLE FOR DATA](#)

Iowa City MSA Employment	
Total Nonfarm 15p	102,300
Total Nonfarm 14	99,200
% Change 1 Yr	3.13%
Noteworthy Expanding and Contracting Industries	
State Government	6.48%
Goods Producing	-2.04%

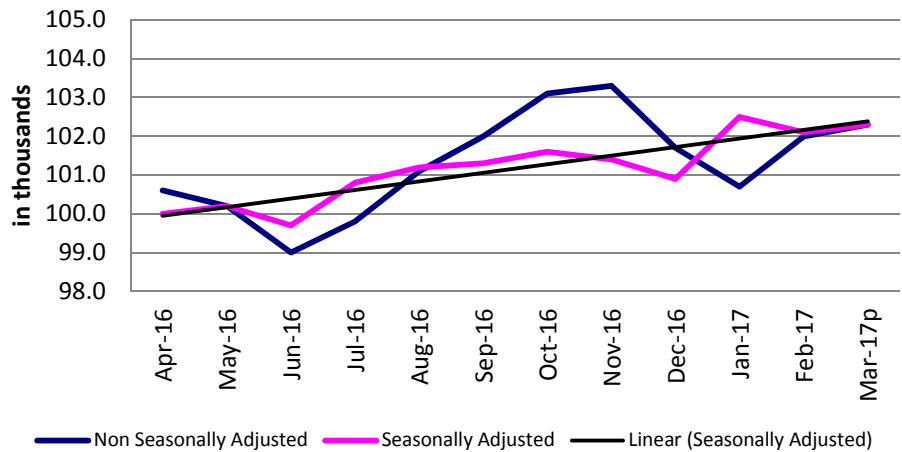
p - preliminary data

Nonfarm employment in the Iowa City metropolitan statistical area added 300 jobs from last month, with gains in both private services (+300) and government (+100). Leisure and hospitality added 100 jobs, professional and business services was unchanged for the third consecutive month, and trade, transportation and warehousing shed 200 jobs.

The metro area has added 3,100 jobs from one year ago, boosted by gains of 2,100 in government and 1,200 in private service-providing sectors. Professional and business services added 300 jobs while trade, transportation and warehousing and goods producing each shed 200 jobs.

For additional information, contact Dennis Schwartz (515-281-5754)

Iowa City Nonfarm Employment



[CLICK TABLE FOR DATA](#)

Sioux City MSA Employment	
Total Nonfarm 15p	87,400
Total Nonfarm 14	88,900
% Change 1 Yr	-1.69%
Noteworthy Expanding and Contracting Industries	
Prof & Business Svc	8.11%
Leisure & Hospitality	-3.61%

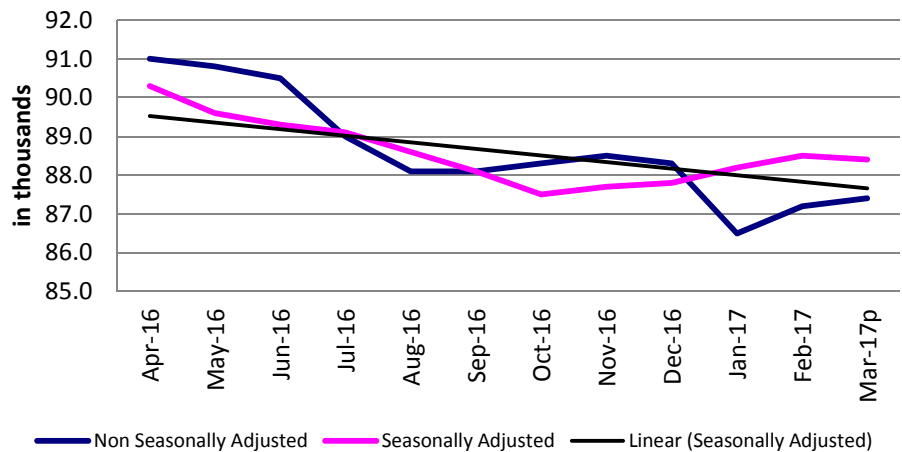
p - preliminary data

Employment in the Sioux City MSA is up just 200 jobs from February. Leisure and hospitality added 200 jobs to lead all sectors. Government and manufacturing each added 100 jobs and trade, transportation and warehousing pared 200 jobs.

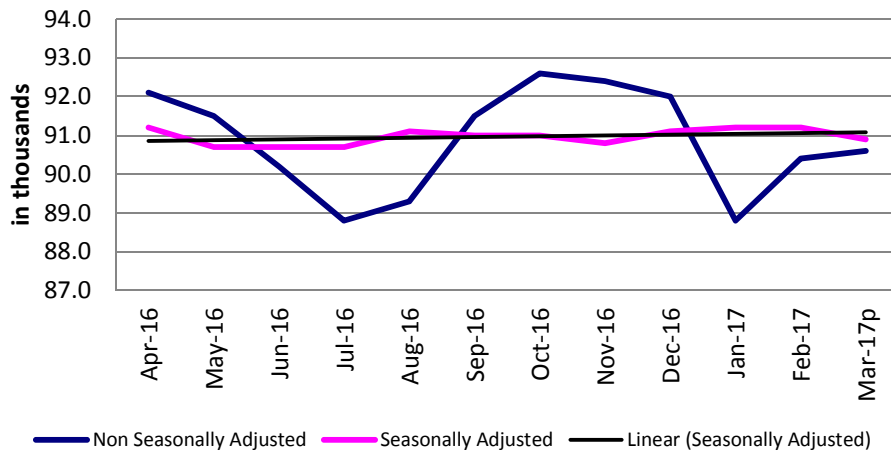
Overall, the area has 1,500 fewer jobs from one year ago. Goods producing sectors have pared 1,700 jobs, none of which were in manufacturing. Trade, transportation and warehousing added 700 jobs and professional and business services added 600 jobs from one year ago. Government has pared 100 jobs.

For additional information, contact Dennis Schwartz (515-281-5754)

Sioux City Nonfarm Employment



Waterloo/Cedar Falls Nonfarm Employment



[CLICK TABLE FOR DATA](#)

Waterloo/Cedar Falls MSA Employment	
Total Nonfarm 15p	90,600
Total Nonfarm 14	90,700
% Change 1 Yr	-0.11%
Noteworthy Expanding and Contracting Industries	
State Government	9.80%
Leisure & Hospitality	-3.85%

p - preliminary data

The Waterloo/Cedar Falls metropolitan statistical area’s total nonfarm employment gained 200 jobs from the previous month and stands at 90,600. The over-the-month change is significantly lower than the five-year average February to March change (+760).

Employment gains this month were spread across multiple sectors but none exceeded a gain of 100 jobs. Those with gains include trade, transportation and warehousing, financial activities, and leisure and hospitality. There were no sectors with jobs losses.

Over the year, employment is down 100 jobs. Government and trade, transportation and warehousing were the only sectors with job gains, each adding 400 jobs. Leisure and hospitality has pared 300 jobs from one year ago. Financial activities and professional and business services are unchanged.

For additional information, contact Dennis Schwartz (515-281-5754)

LINKS TO ADDITIONAL INFORMATION

Click on a link below to visit web page

Worker Adjustment & Retraining Notification Act (WARN)

U.S. Bureau of Labor Statistics

Unemployment Insurance Benefit Payments

Consumer Price Index (CPI)

Unemployment Insurance Benefit Paid by County

Employment Statistics for Canada

Current Employment Statistics

Each month the **Current Employment Statistics** program surveys about 143,000 businesses and government agencies, representing approximately 588,000 individual worksites, in order to provide detailed industry data on employment, hours, and earnings of workers on nonfarm payrolls for all 50 States, the District of Columbia, Puerto Rico, the Virgin Islands, and about 450 metropolitan areas and divisions.

Contact Information

Iowa Workforce Development
Employment Statistics Bureau
1000 East Grand Avenue
Des Moines, IA 50319-0209
Tel: 515-281-8515
Tel: 800-532-9793
Fax: 515-281-8195
Email: trends@iowa.gov
www.iowaworkforce.org

Equal opportunity employer/program. Auxiliary aids and services are available upon request to individuals with disabilities. For deaf and hard of hearing, use Relay 711