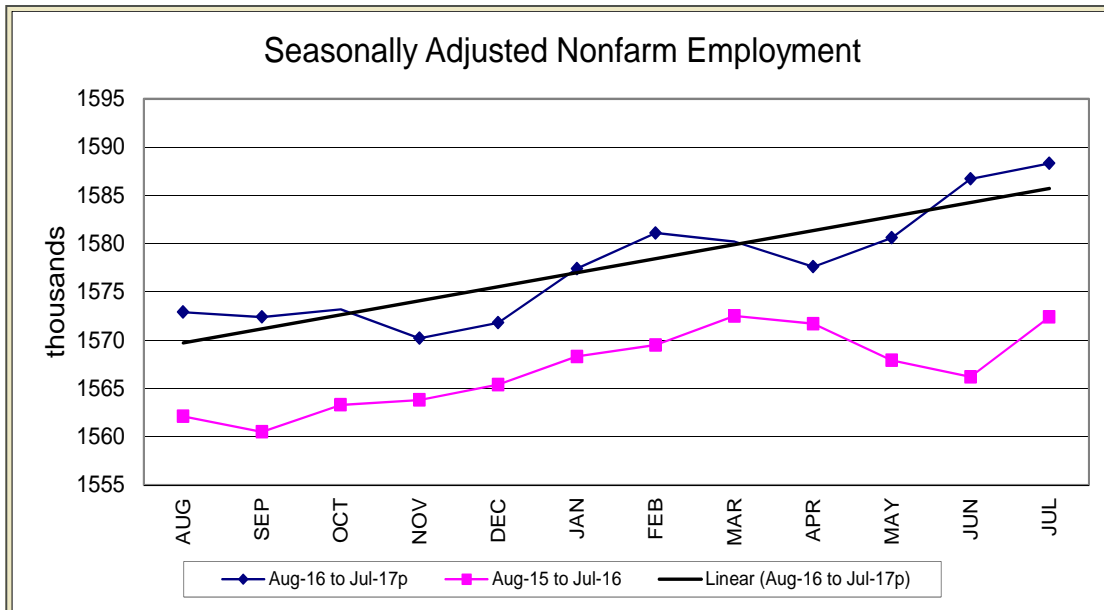


STATE OF IOWA NONFARM EMPLOYMENT WORKFORCE DEVELOPMENT

JULY 2017
LMR MONTHLY

NONFARM EMPLOYMENT BOOSTED BY SEASONAL GAINS



Total nonfarm employment increased for the third consecutive month in July, gaining 1,600 jobs. Since April, 10,700 jobs have been added with most of the job gains being in private services. Government shed jobs this month (-500) following a larger than expected increase in June. Altogether, government trails last year's mark by 2,400 jobs, while total nonfarm employment is up 15,900 jobs.

Manufacturing added the most jobs this month (+1,800) and has gained jobs in each of the last three months, adding 5,000 jobs during that span. The majority of those gains have been in durable goods factories, although nondurable goods factories have also experienced strong job growth since April. Among durable goods firms, jobs have been added in fabricated metal products and agricultural and construction machinery shops. Within nondurable goods factories, animal slaughtering and processing along with food manufacturing have fared

the best. Other gains this month included trade and transportation (+1,600), leisure and hospitality (+1,200), and education and health services (+600). Losses this month were concentrated in construction (-2,300) due to staff reductions with projects completing early this year. Smaller losses included other services (-600) and professional and business services (-400).

Annually, healthcare remains a driving force in job growth in Iowa and has added 6,900 jobs over the past twelve months even after this month's slight decline. Finance and insurance was flat this month but still remains up 4,300 jobs since last July. In fact, most sectors have shown signs of growth versus last year including manufacturing (+1,800) following the recent hiring boon since April. Those few sectors that are down annually were construction (-4,400), regressing from last year's record pace as large-scale industrial projects ended, and

information services (-1,200) due to structural changes within the industry.

Nationally, total nonfarm employment advanced by 209,000 jobs in July, beating the prior twelve month average of 184,000 jobs. The largest gains were in eating and drinking establishments, professional and business services, and health care. Over the past twelve months, 2.2 million jobs have been added in the U.S. at an annual pace of 1.5 percent growth (compared to 1.0 percent annual growth in Iowa).

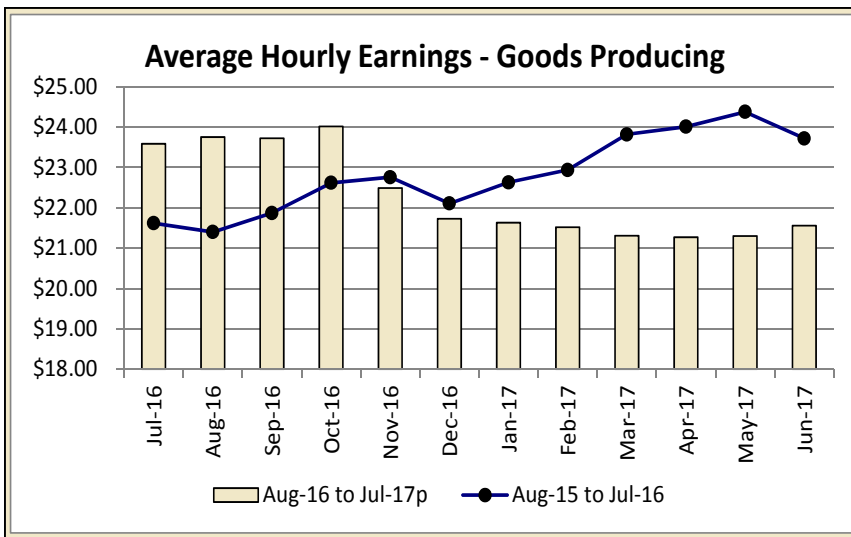
For additional information, contact James Morris (515-281-8515)

For additional information, contact James Morris (515-281-8515)

**METROPOLITAN STATISTICAL AREA
SEASONALLY ADJUSTED NONFARM EMPLOYMENT (TOTAL NONFARM)**

MSA	Jul-16	Aug-16	Sep-16	Oct-16	Nov-16	Dec-16	Jan-17	Feb-17	Mar-17	Apr-17	May-17	Jun-17	Jul-17p
AMES	52.5	52.6	52.7	52.6	52.7	52.8	53.8	53.9	53.6	53.7	53.1	53.4	53.4
CEDAR RAPIDS	144.0	144.2	143.9	143.6	143.5	144.1	144.8	144.3	144.8	144.3	143.6	144.4	143.4
DES MOINES/W. DES MOINES	360.3	359.3	358.9	359.1	360.9	361.6	361.9	363.2	362.1	365.1	364.2	370.3	371.0
DUBUQUE	59.4	59.5	59.3	59.8	59.8	60.0	59.7	59.9	60.0	59.7	60.2	59.8	59.6
IOWA CITY	100.8	101.2	101.3	101.6	101.4	100.9	102.5	102.1	102.4	103.2	102.8	103.4	103.8
SIOUX CITY	89.1	88.6	88.1	87.5	87.7	87.8	88.2	88.5	88.4	88.2	89.3	88.2	88.0
WATERLOO/CEDAR FALLS	90.7	91.1	91.0	91.0	90.8	91.1	91.2	91.2	90.8	90.6	90.6	90.5	90.1

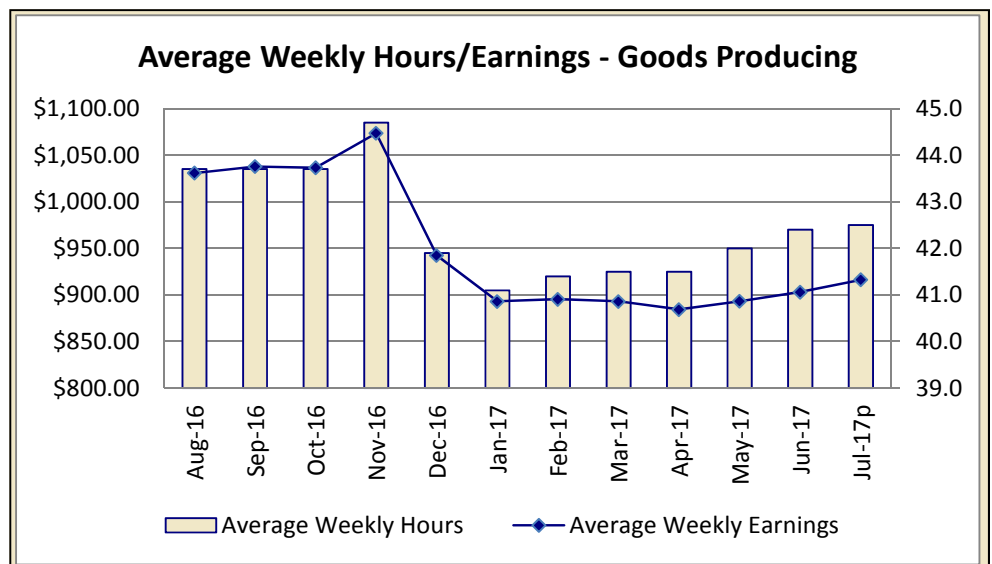
IOWA'S HOURS & EARNINGS



Goods-producing Hours & Earnings	
Average Weekly Earnings	\$916.30
Average Hourly Earnings	\$21.56
Average Weekly Hours	42.5

Production workers in Iowa's goods-producing sector averaged \$916.30 in July, \$13.18 more than last month, but \$122.64 less than one year ago. The decline in weekly wages stems from a drop in overtime hours worked for production workers in the construction industry. Average weekly schedules were unusually high last year as projects were being completed. Manufacturing workers averaged \$811.74 in July, up \$44.64 compared to last July.

Production workers in Iowa's retail sector averaged \$389.70 in July, up \$26.58 compared to last year. Finance workers have added a mere \$9.33 over the past twelve months and \$909.69 a week in wages.



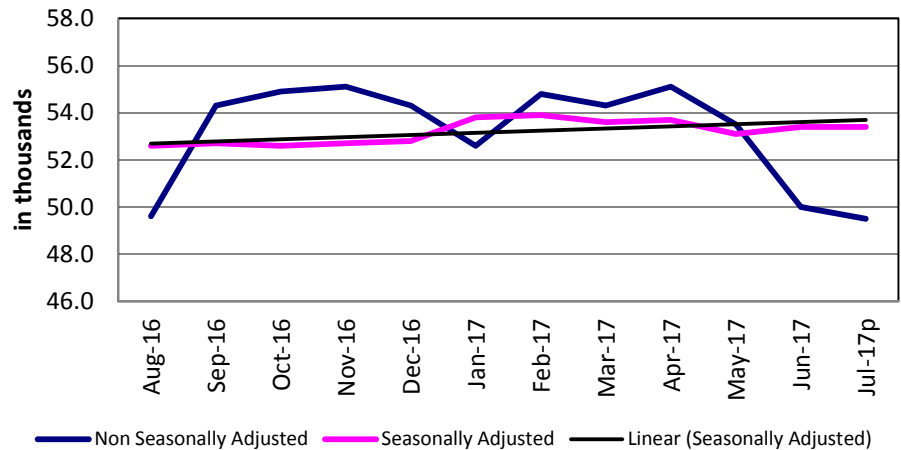
METROPOLITAN STATISTICAL AREAS

[CLICK TABLE FOR DATA](#)

Ames MSA Employment	
Total Nonfarm 15 ^p	49,500
Total Nonfarm 14	48,300
% Change 1 Yr	2.48%
Noteworthy Expanding and Contracting Industries (1 yr)	
Pvt Svc Providing	3.70%
Local Government	0.00%

p - preliminary data

Ames - Nonfarm Employment



The Ames metropolitan statistical area shed 500 jobs in July and now rests at 49,500 jobs. This total is 1,200 jobs higher than last year. State government seasonally shed 500 jobs and local government pared 200 jobs. Combined, government decreased by 600 jobs and was partially offset by a gain of 100 jobs in private services.

Compared to last year, total nonfarm employment has added 1,200 jobs due primarily to growth in private service sectors (+900). Smaller annual gains were evident in government (+200) and goods producing sectors (+100).

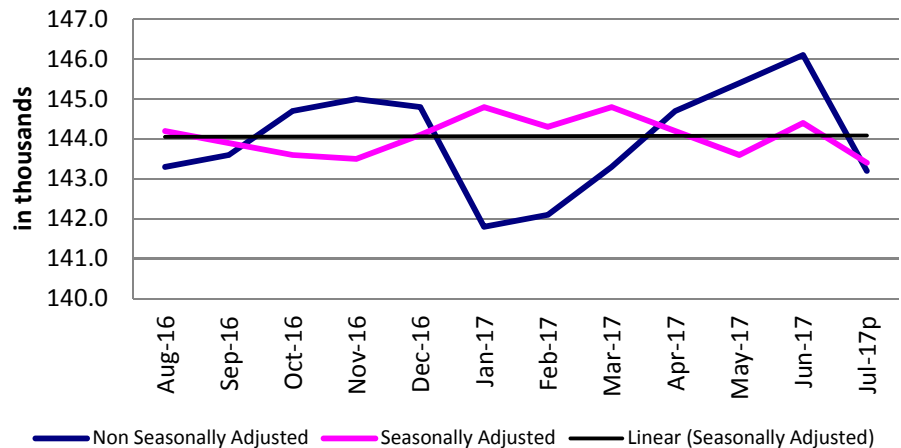
For additional information, contact James Morris (515-281-8515)

[CLICK TABLE FOR DATA](#)

Cedar Rapids MSA Employment	
Total Nonfarm 15 ^p	143,200
Total Nonfarm 14	143,400
% Change 1 Yr	-0.14%
Noteworthy Expanding and Contracting Industries (1 yr)	
Prof & Business Svcs	4.96%
Local Government	-11.54%

p - preliminary data

Cedar Rapids - Nonfarm Employment



The Cedar Rapids metropolitan statistical area pared jobs this month after five consecutive months of gain, bringing total nonfarm employment to 143,200 jobs. The jobs loss (-2,900) was largely seasonal in nature as local government shed 2,400 jobs. Professional and business services and educational and health services each trimmed 300 jobs. Manufacturing, the only sector with an increase this month, added 300 jobs, building on three previous months of gains. Only a third of the jobs added this month were in durable goods manufacturing.

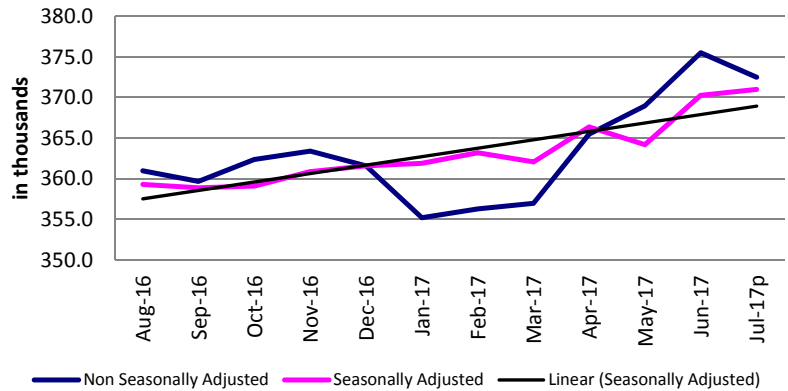
Over the year the area shed 200 jobs with the largest loss in local government (-1,500). Information contributed to the loss, trimming 300 jobs from one year ago. In contrast, professional and business services has added 700 jobs, natural resources and construction added 400 jobs, and manufacturing added 200 jobs.

For additional information, contact Dennis Schwartz (515-281-5754)

The Des Moines Metro area lost 3,000 jobs in July, lowering total nonfarm employment down to 372,500 jobs. Jobs are typically shed in this month due to a seasonal decrease in local government education; however, this month's decrease was smaller than prior years due to a shift and subsequent early loss in June. Combined, government pared 2,800 jobs in July, but remains 200 jobs higher than last year. Total nonfarm employment is 11,900 jobs higher than last year's mark (+3.3 percent).

Leisure and hospitality added the most jobs in July (+400) as firms boosted staff at recreational activities. This super sector has gained the most jobs annually in the metropolitan area. Other

Des Moines/W. Des Moines - Nonfarm Employment



gains this

month were small and included trade and transportation (+200), manufacturing (+100), and professional and business services (+100). Private sector losses this month were led by education and health services (-600) and were heavily influenced by a seasonal drop in private education (-400). Construction pared jobs early this month (-300) as projects started to complete early. This sector had seen larger than expected gains over the past three months. The only other drop this month was a small drop in financial activities (-100).

Annually, leisure and hospitality has led all sectors with 4,800 jobs added since last year. This super sector has had high gains throughout 2017. Professional and business services has also grown substantially since last July (+2,700) with large growth in administrative and support and waste management services (+1,800). Construction remains markedly up annually (+2,300) even with the unexpected loss this month. The only sectors paring jobs versus last year are trade and transportation (-500) and information services (-300).

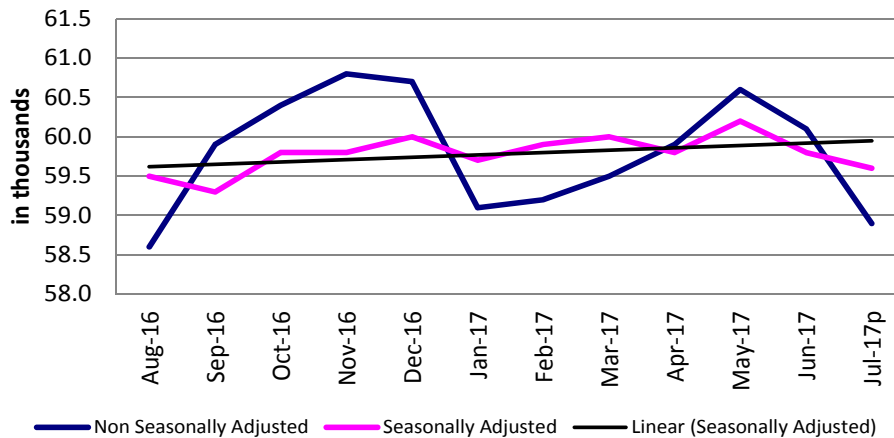
[CLICK TABLE FOR DATA](#)

Des Moines MSA Employment	
Total Nonfarm 15 ^p	372,500
Total Nonfarm 14	360,600
% Change 1 Yr	3.30%
Noteworthy Expanding and Contracting Industries (1 yr)	
Leisure & Hospitality	12.97%
Information	-4.48%

p - preliminary data

For additional information, contact James Morris (515-281-8515)

Dubuque - Nonfarm Employment



[CLICK TABLE FOR DATA](#)

Dubuque MSA Employment	
Total Nonfarm 15 ^p	58,900
Total Nonfarm 14	58,600
% Change 1 Yr	-2.00%
Noteworthy Expanding and Contracting Industries (1 yr)	
Goods Producing	3.39%
Local Government	-8.57%

p - preliminary data

The Dubuque metro total nonfarm employment decreased by 1,200 jobs in July, lowering total nonfarm employment down to 58,900 jobs. This month's drop was average when compared to prior ten year average due primarily to a seasonal education decrease in local governments. Government combined was down 1,200 jobs. Goods producing and service industries offset each other this month for no change.

Annually, Dubuque has added 300 jobs. All of the gain is due to expansion in the private sector. Goods producing industries are up 400 jobs and private services are up 200 jobs annually.

For additional information, contact James Morris (515-281-8515)

[CLICK TABLE FOR DATA](#)

Iowa City MSA Employment	
Total Nonfarm 15p	101,900
Total Nonfarm 14	99,800
% Change 1 Yr	2.10%
Noteworthy Expanding and Contracting Industries	
Prof & Business	7.35%
Trade & Transport	-4.12%

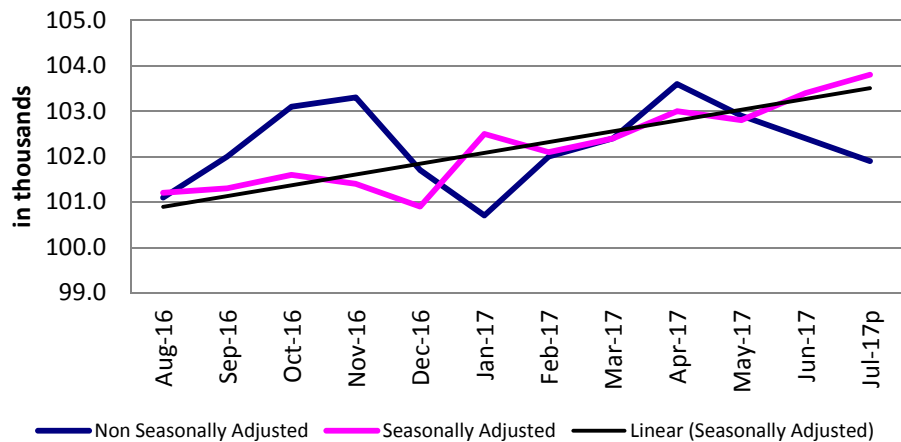
p - preliminary data

Nonfarm employment in the Iowa City metropolitan statistical area dropped 500 jobs from last month mostly due to a seasonal decline in local government employment (-900). Trade, transportation and warehousing and leisure and hospitality each shed 100 jobs. State government is the only sector with an increase, adding 700 jobs.

The metro area has added 2,100 jobs from one year ago, boosted by gains of 1,500 in government and 800 in private service-providing sectors. Professional and business services added 500 jobs and leisure and hospitality gained 200 jobs. Trade, transportation and warehousing pared 700 jobs and goods producing industries trimmed 200 jobs.

For additional information, contact Dennis Schwartz (515-281-5754)

Iowa City - Nonfarm Employment



[CLICK TABLE FOR DATA](#)

Sioux City MSA Employment	
Total Nonfarm 15p	88,200
Total Nonfarm 14	89,000
% Change 1 Yr	-0.90%
Noteworthy Expanding and Contracting Industries	
Trade & Transport	3.55%
Goods Producing	-3.59%

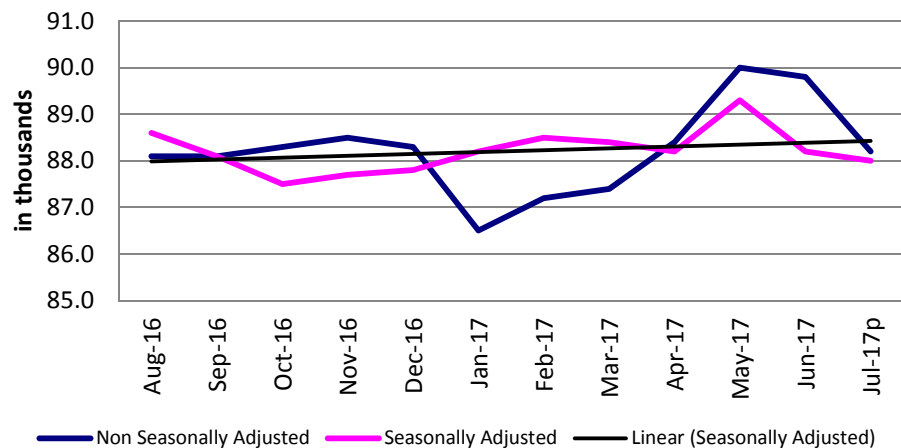
p - preliminary data

Employment in the Sioux City MSA is down 1,600 jobs from June. Losses consisted of 1,200 fewer jobs in government and a reduction of 400 jobs in goods producing industries, although manufacturing was unchanged. Leisure and hospitality also pared 100 jobs. The only sector with a jobs gain was trade, transportation and warehousing which added 200 jobs.

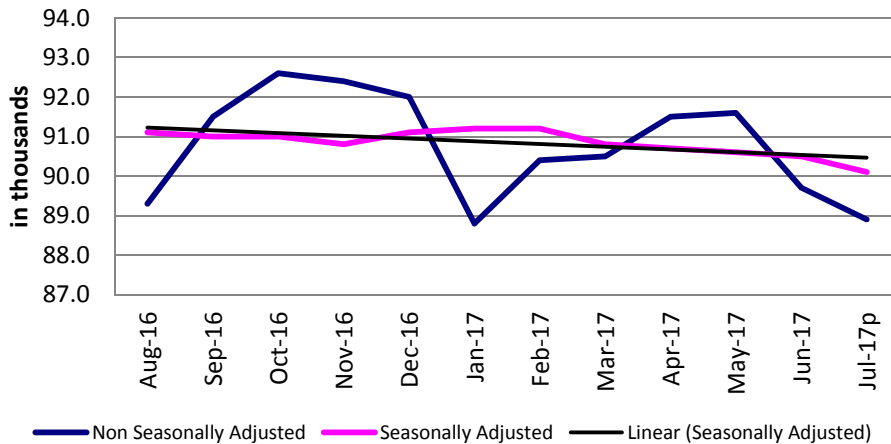
Overall, area employment is 800 below one year ago. Goods producing industries are responsible for the bulk of the loss, shedding 800 jobs. Professional and business services and government each pared 100 jobs. Manufacturing has added 400 jobs.

For additional information, contact Dennis Schwartz (515-281-5754)

Sioux City - Nonfarm Employment



Waterloo/Cedar Falls - Nonfarm Employment



[CLICK TABLE FOR DATA](#)

Waterloo/Cedar Falls MSA Employment	
Total Nonfarm 15p	88,900
Total Nonfarm 14	88,800
% Change 1 Yr	0.11%
Noteworthy Expanding and Contracting Industries	
Prof & Business Svcs	6.76%
Retail Trade	-4.55%

p - preliminary data

The Waterloo/Cedar Falls metropolitan statistical area's total nonfarm employment dropped 800 jobs from the previous month and stands at 88,900. The over-the-month change is seasonal in nature and significantly below the 10-year average June-to-July change.

Local government shed the greatest number of jobs (-500), followed by educational and health services (-300). Trade, transportation and warehousing and goods producing sectors each added 100 jobs.

Over the year, employment is up 100 jobs. Professional and business services has added 500 jobs. Leisure and hospitality gained 200 jobs. Manufacturing has pared 200 jobs and government has shed 100 jobs.

For additional information, contact Dennis Schwartz (515-281-5754)

LINKS TO ADDITIONAL INFORMATION

Click on a link below to visit web page

Worker Adjustment & Retraining Notification Act (WARN)

U.S. Bureau of Labor Statistics

Unemployment Insurance Benefit Payments

Consumer Price Index (CPI)

Unemployment Insurance Benefit Paid by County

Employment Statistics for Canada

Current Employment Statistics

Each month the **Current Employment Statistics** program surveys about 143,000 businesses and government agencies, representing approximately 588,000 individual worksites, in order to provide detailed industry data on employment, hours, and earnings of workers on nonfarm payrolls for all 50 States, the District of Columbia, Puerto Rico, the Virgin Islands, and about 450 metropolitan areas and divisions.

Contact Information

Iowa Workforce Development
Employment Statistics Bureau
1000 East Grand Avenue
Des Moines, IA 50319-0209
Tel: 515-281-8515
Tel: 800-532-9793
Fax: 515-281-8195
Email: trends@iowa.gov
www.iowaworkforce.org

Equal opportunity employer/program. Auxiliary aids and services are available upon request to individuals with disabilities. For deaf and hard of hearing, use Relay 711