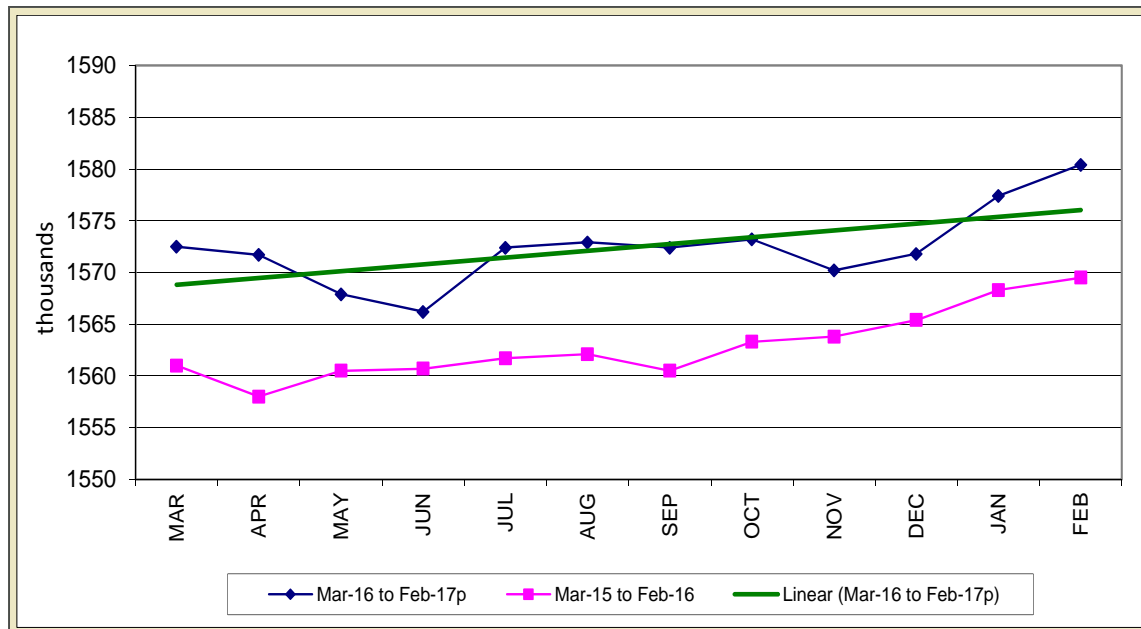


STATE OF IOWA NONFARM EMPLOYMENT WORKFORCE DEVELOPMENT

FEBRUARY 2017
LMR MONTHLY

2017 JOBS EXPANSION CONTINUES



Iowa businesses again expanded in February, adding 3,000 jobs and lifting total nonfarm employment to 1,580,400 jobs. Last month's employment experienced a moderate revision downward and this month's gain helps recover much of the drop. Private sectors were responsible for all of the growth this month as government shed jobs (-500) primarily at the local level. Despite this loss, government remains up 800 jobs annually and the state combined is up 10,900 jobs.

Among private sectors, education and health services added 1,800 jobs in February to lead all sectors. Education added the majority of the jobs (+1,300), although healthcare also expanded their payrolls (+500). Construction added jobs this month (+1,600) and this month's gain could signify an earlier than usual start to the building season. Other gains this month included professional and

business services which added jobs for the fourth-consecutive month, and finance which has steadily trended up since August. Losses this month were limited to just three sectors and led by leisure and hospitality (-900). This sector pared jobs evenly in both recreational activities and hospitality and eating and drinking places. Despite the monthly loss, this sector has fared well and added jobs annually (+2,000). Alternatively, information services again trended down this month (-400), as did manufacturing (-200) due to cutbacks in durable goods.

Annually, total nonfarm employment continues to slowly add employment and has been fueled by hiring in professional and business services (+4,200). This sector alone has been responsible for 39 percent of all annual job gains in the state. Finance continues to grow its footprint in Iowa and is up 3,000 jobs versus last year.

Other sectors experiencing growth annually include trade and transportation (+2,400), education and health services (+2,000), and leisure and hospitality (+2,000). Annual losses have been largest in manufacturing (-4,000) and wholly limited to durable goods factories. Information is the only other sector to pare jobs versus last year (-1,400).

Nationally, total nonfarm employment added 235,000 jobs. Job growth was evident in construction, manufacturing, private education, and mining. Since last February, the U.S. has added 2.35 million jobs (+1.6 percent).

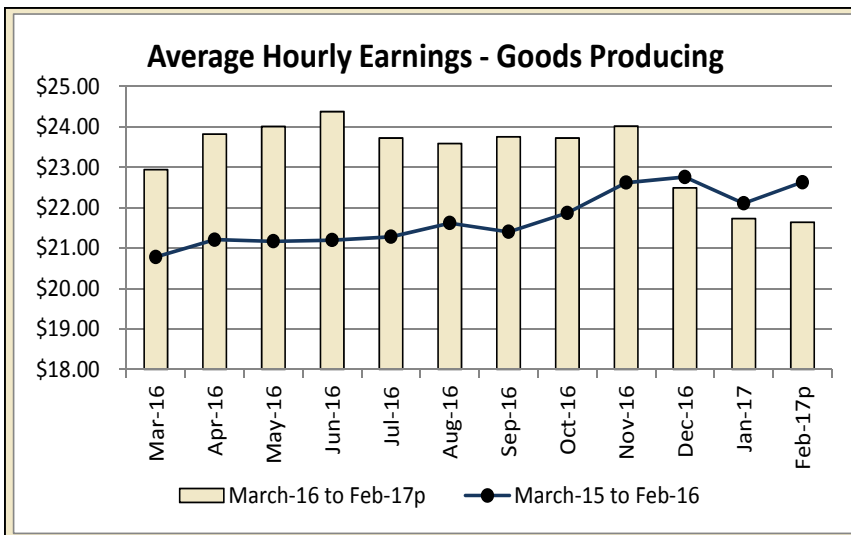
For additional information, contact James Morris (515-281-8515)

For additional information, contact James Morris (515-281-8515)

**METROPOLITAN STATISTICAL AREA
SEASONALLY ADJUSTED NONFARM EMPLOYMENT (TOTAL NONFARM)**

MSA	Feb-16	Mar-16	Apr-16	May-16	Jun-16	Jul-16	Aug-16	Sep-16	Oct-16	Nov-16	Dec-16	Jan-17	Feb-17p
AMES	52.8	52.6	52.7	52.4	52.5	52.5	52.6	52.7	52.6	52.7	52.8	53.8	53.7
CEDAR RAPIDS	143.9	144.3	143.9	143.1	143.8	144.0	144.2	143.9	143.6	143.5	144.1	144.8	144.2
DES MOINES/W. DES MOINES	355.2	356.2	356.3	355.9	355.4	360.3	359.3	358.9	359.1	360.9	361.6	361.9	362.4
DUBUQUE	60.1	60.3	59.8	59.5	59.5	59.4	59.5	59.3	59.8	59.8	60.0	59.7	59.8
IOWA CITY	99.7	99.6	100.0	100.2	99.7	100.8	101.2	101.3	101.6	101.4	100.9	102.5	102.0
SIOUX CITY	89.3	89.8	90.3	89.6	89.3	89.1	88.6	88.1	87.5	87.7	87.8	88.2	88.5
WATERLOO/CEDAR FALLS	91.1	90.9	91.2	90.7	90.7	90.7	91.1	91.0	91.0	90.8	91.1	91.2	91.2

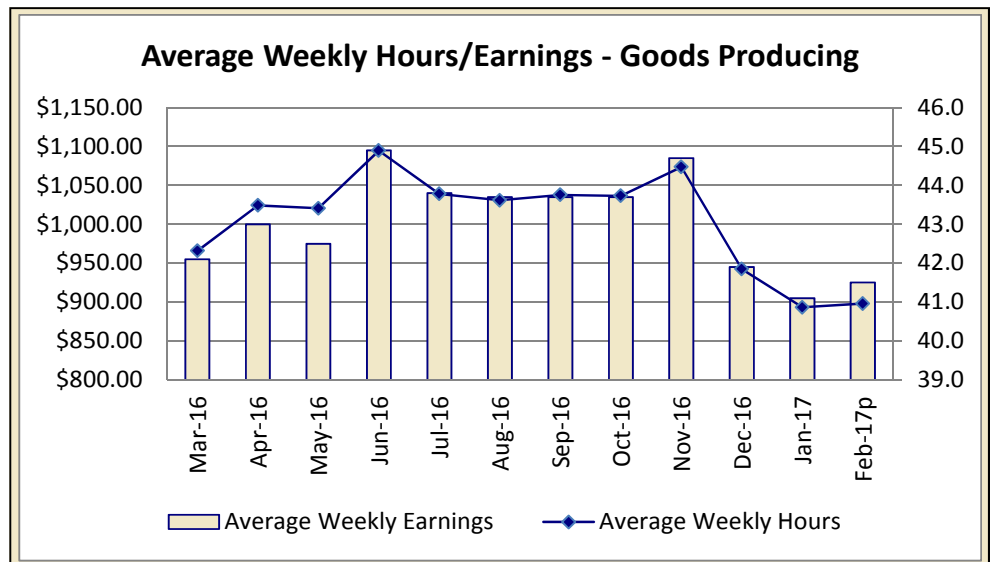
IOWA'S HOURS & EARNINGS



Goods-producing Hours & Earnings	
Average Weekly Earnings	\$898.06
Average Hourly Earnings	\$21.64
Average Weekly Hours	41.5

Production workers in Iowa's goods-producing sector averaged \$898.06 in February, up \$4.96 compared to last month, but trailing last year's mark by \$36.56. The annual drop stems from both hours and earnings being pared from construction workers over the past twelve months. Manufacturing workers averaged \$800.38 in February, up \$20.62 versus last year due primarily to an hourly wage increase of 63 cents.

Among service sectors, production workers in Iowa's retail sector averaged \$367.36 in February, up \$13.45 compared to last year. Finance workers experienced a decrease of \$30.02 versus last year and averaged \$877.10 per week. The lower wage could be the result of an increase in lower-wage new entries into this sector.



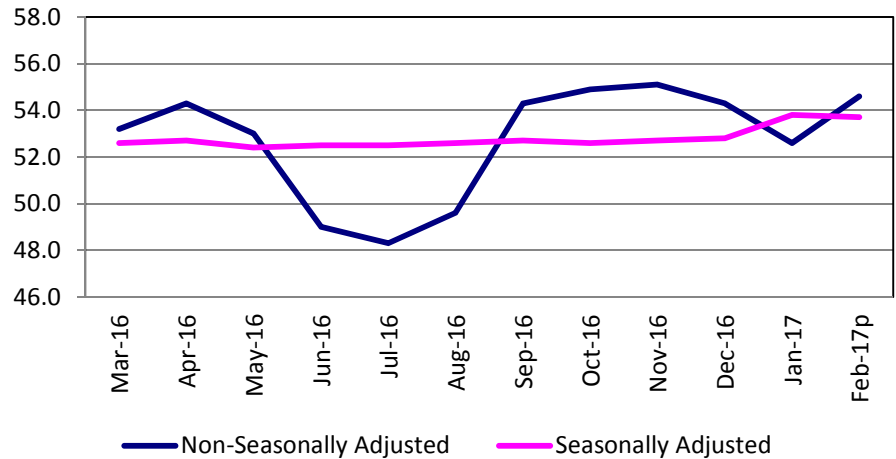
METROPOLITAN STATISTICAL AREAS

[CLICK TABLE FOR DATA](#)

Ames MSA Employment	
Total Nonfarm 15 ^p	54,600
Total Nonfarm 14	53,800
% Change 1 Yr	1.49%
Noteworthy Expanding and Contracting Industries (1 yr)	
Goods Producing	3.23%
Pvt Srvc Providing	0.40%

p - preliminary data

Ames - Nonfarm Employment



The Ames metro area seasonally increased by 2,000 jobs in February and now rest at 54,600 jobs. This month's gain is average for the metro area and leaves Ames up 800 jobs annually.

Government added 1,600 jobs primarily at the state government education level. This month's gain equates to 500 jobs added annually. Private services added 400 jobs this month and are now up 100 jobs for the year. Goods producing industries are unchanged this month and 200 jobs higher than last February.

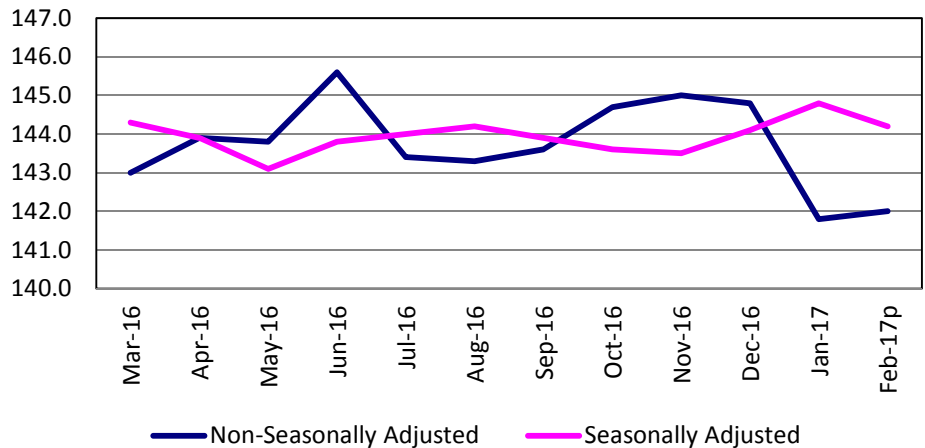
For additional information, contact James Morris (515-281-8515)

[CLICK TABLE FOR DATA](#)

Cedar Rapids MSA Employment	
Total Nonfarm 15 ^p	142,000
Total Nonfarm 14	141,700
% Change 1 Yr	0.21%
Noteworthy Expanding and Contracting Industries (1 yr)	
Nat Res & Construct	8.82%
Information	-9.09%

p - preliminary data

Cedar Rapids - Nonfarm Employment



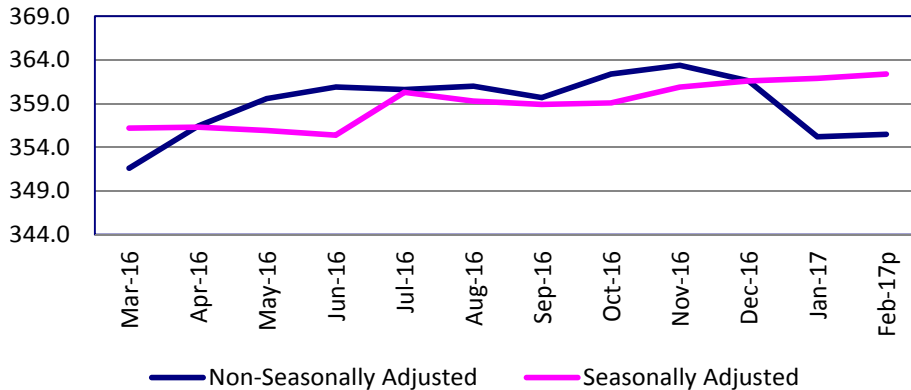
The Cedar Rapids metropolitan statistical area added 200 nonfarm jobs from January, and now stands at 142,000. Government and educational and health services each added 300 jobs. Professional and business services contributed an additional 200 jobs.

On the other hand, trade, transportation and warehousing experienced the greatest loss, shedding 300 jobs, all in retail trade. Smaller losses were experienced in manufacturing (-200) and natural resources and construction (-100).

Over the year the area added 300 jobs with professional and business services adding 800 jobs, natural resources and mining gaining 600 jobs, and government adding 200 employees. The gains were offset by losses in various sectors, however educational and health services pared the greatest number of jobs (-600).

For additional information, contact Dennis Schwartz (515-281-5754)

**Des Moines/West Des Moines -
Nonfarm Employment**



[CLICK TABLE FOR DATA](#)

Des Moines MSA Employment	
Total Nonfarm 15p	355,500
Total Nonfarm 14	349,500
% Change 1 Yr	1.72%
Noteworthy Expanding and Contracting Industries (1 yr)	
Mining & Construct	15.15%
Information	-5.88%

p - preliminary data

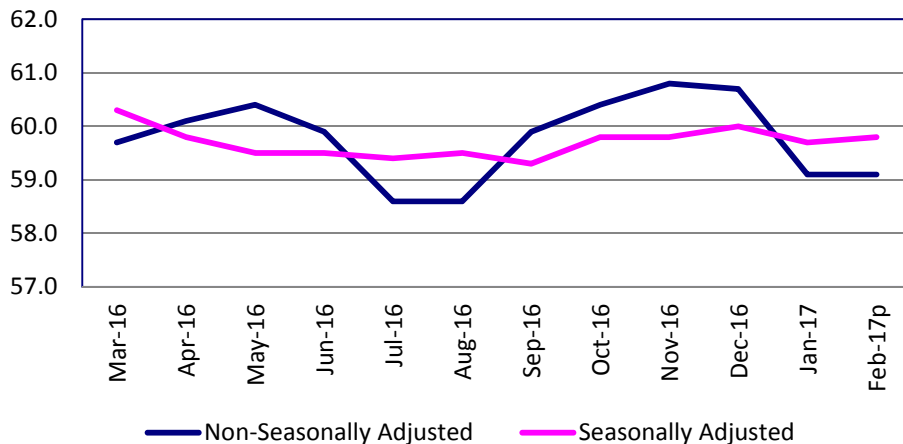
The Des Moines Metropolitan Statistical Area saw little growth in February and left total nonfarm slightly higher than January. The new total of 355,500 jobs is 300 higher than last year and 6,000 more than last February. Private sectors shed 300 jobs this month while government added 600 jobs. Government is up 300 jobs annually at the local level.

Within private sectors, leisure and hospitality tied with financial activities for the most jobs added this month (+400). Both sectors have fared well annually and have combined for almost half of all jobs gained in the metro area. The only other sector to gain jobs since January was professional and business services (+100). Losses this month were led by trade and transportation (-800) and were partially fueled by a seasonal paring of holiday retail staff. Construction shed jobs unexpectedly (-400), but has otherwise fared well over the past several months.

Since last year, construction has added the most jobs (+2,500) with large gains being isolated with specialty trade contractors (+1,900). Leisure and hospitality remains markedly up (+1,700), as does financial services (+1,300). The only sectors to trail last year's mark are trade and transportation (-600), information (-400), and education and health services (-100).

For additional information, contact James Morris (515-281-8515)

Dubuque - Nonfarm Employment



[CLICK TABLE FOR DATA](#)

Dubuque MSA Employment	
Total Nonfarm 15p	59,100
Total Nonfarm 14	59,000
% Change 1 Yr	0.00%
Noteworthy Expanding and Contracting Industries (1 yr)	
Goods Producing	1.83%
Trade & Transport	-1.60%

p - preliminary data

The Dubuque metro total nonfarm employment was little changed in February. This month is not seasonal, so little to no movement at the total level for this month is not uncommon. Small seasonal gains within goods producing industries (+100) were exactly offset at the private service level (-100). Part of this service decline was due to the seasonal shedding of temporary retail staff. Government was unchanged since January.

Annually, the Dubuque area remains up 100 jobs. Goods producing industries have been responsible for the yearly increase as private services are down slightly.

For additional information, contact James Morris (515-281-8515)

METROPOLITAN STATISTICAL AREAS

[CLICK TABLE FOR DATA](#)

Iowa City MSA Employment	
Total Nonfarm 15p	101,900
Total Nonfarm 14	99,100
% Change 1 Yr	2.83%
Noteworthy Expanding and Contracting Industries	
Prof & Business Svc	4.48%
Leisure & Hospitality	-1.01%

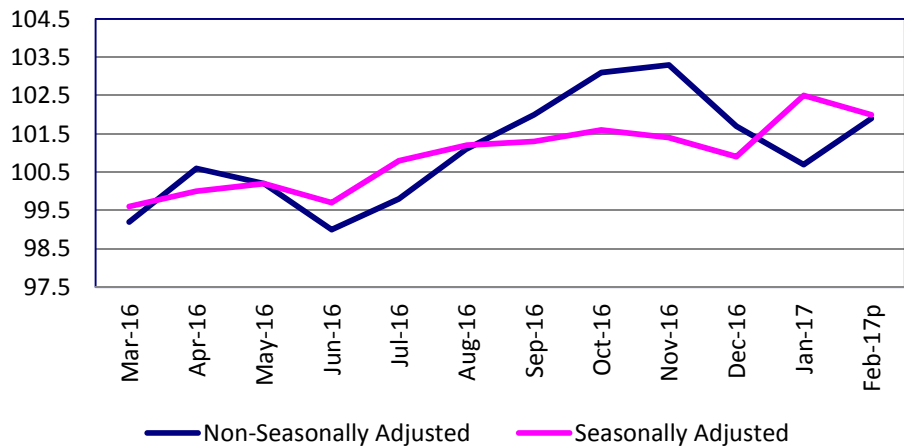
p - preliminary data

Nonfarm employment in the Iowa City metropolitan statistical area added 1,200 jobs from last month, with gains in both private services (+600) and government (+500). Leisure and hospitality added 200 jobs, professional and business services was unchanged, and trade, transportation and warehousing shed 100 jobs.

The metro area has added 2,800 jobs from one year ago, boosted by a seasonal gain of 1,700 in government, and smaller gain in professional and business services (+300). Leisure and hospitality pared 100 jobs and trade, transportation and warehousing was unchanged. Goods producing has also added 200 jobs.

For additional information, contact Dennis Schwartz (515-281-5754)

Iowa City - Nonfarm Employment



[CLICK TABLE FOR DATA](#)

Sioux City MSA Employment	
Total Nonfarm 15p	87,200
Total Nonfarm 14	87,800
% Change 1 Yr	-0.68%
Noteworthy Expanding and Contracting Industries	
Prof & Business Svc	8.11%
Leisure & Hospitality	-3.70%

p - preliminary data

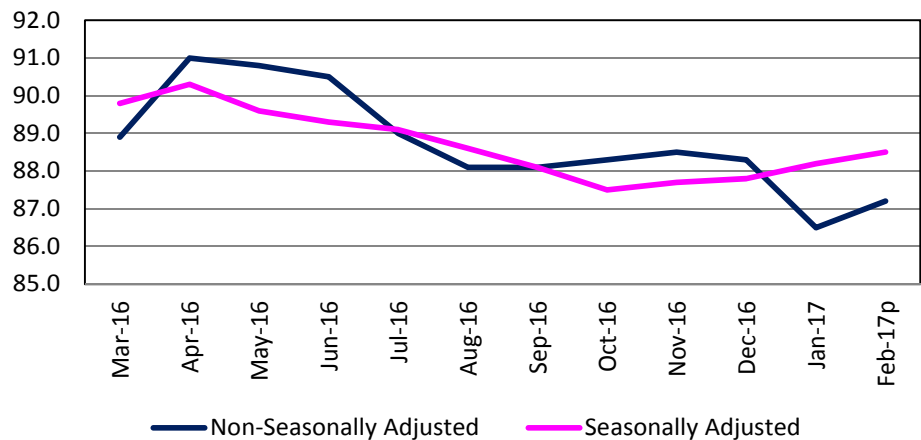
The Sioux City MSA has been redefined. It now includes: Dixon and Dakota Counties in Nebraska, Union County in South Dakota, and Woodbury and Plymouth Counties in Iowa.

Employment in the Sioux City MSA is up 700 jobs from January. Goods producing added 400 jobs although manufacturing employment did not change. Trade, transportation and warehousing added 200 jobs, professional and business services gained 100, and government added 100. Leisure and hospitality was unchanged and there were no sectors with employment losses.

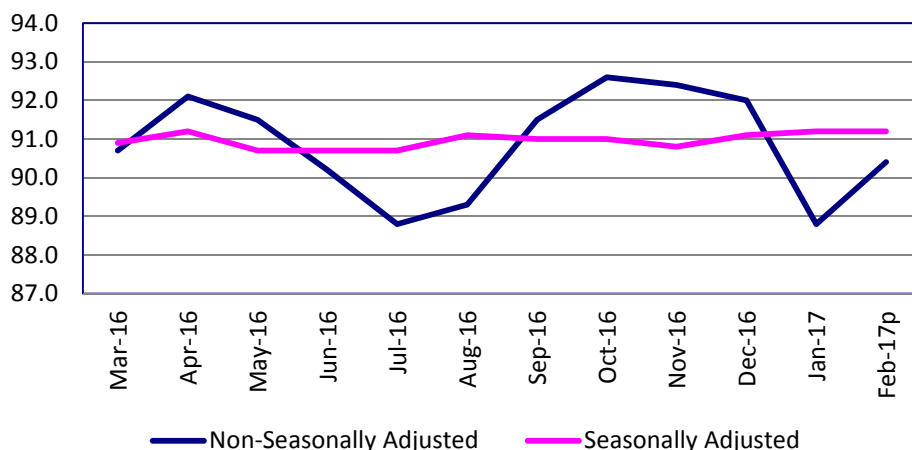
Overall, the area has 600 fewer jobs from one year ago. Goods producing has pared 1,000 jobs, none of which were in manufacturing. Trade, transportation and warehousing added 1,000 jobs and professional and business services added 600 jobs from one year ago. Government has pared 100 jobs.

For additional information, contact Dennis Schwartz (515-281-5754)

Sioux City - Nonfarm Employment



Waterloo/Cedar Falls - Nonfarm Employment



[CLICK TABLE FOR DATA](#)

Waterloo/Cedar Falls MSA Employment	
Total Nonfarm 15p	90,400
Total Nonfarm 14	90,500
% Change 1 Yr	-0.11%
Noteworthy Expanding and Contracting Industries	
Government	3.33%
Financial Activities	-4.17%

p - preliminary data

The Waterloo/Cedar Falls metropolitan statistical area's total nonfarm employment gained 1,600 jobs from the previous month and stands at 90,400. The change is nearly equal to the five-year average January to February change and largely seasonal in nature.

The largest increase occurred in government (+1,300) with a seasonal boost of 1,100 in state government. Trade, transportation and warehousing added 200 jobs, and professional and business services, educational and health services and leisure and hospitality each added 100 jobs. Manufacturing pared 200 jobs, all in the durable goods manufacturers.

Over the year, employment is down 100 jobs. Government and trade, transportation and warehousing were the only sectors with job gains, adding 500 and 200, respectively. Manufacturing and leisure and hospitality have each pared 300 jobs from one year ago and financial activities has shed 200 jobs. Financial activities has pared 11.5% (600 jobs) of its employment over the last five years.

For additional information, contact Dennis Schwartz (515-281-5754)

LINKS TO ADDITIONAL INFORMATION

Click on a link below to visit web page

Worker Adjustment & Retraining Notification Act (WARN)

U.S. Bureau of Labor Statistics

Unemployment Insurance Benefit Payments

Consumer Price Index (CPI)

Unemployment Insurance Benefit Paid by County

Employment Statistics for Canada

Current Employment Statistics

Each month the **Current Employment Statistics** program surveys about 143,000 businesses and government agencies, representing approximately 588,000 individual worksites, in order to provide detailed industry data on employment, hours, and earnings of workers on nonfarm payrolls for all 50 States, the District of Columbia, Puerto Rico, the Virgin Islands, and about 450 metropolitan areas and divisions.

Contact Information

Iowa Workforce Development
Employment Statistics Bureau
1000 East Grand Avenue
Des Moines, IA 50319-0209
Tel: 515-281-8515
Tel: 800-532-9793
Fax: 515-281-8195
Email: trends@iowa.gov
www.iowaworkforce.org

Equal opportunity employer/program. Auxiliary aids and services are available upon request to individuals with disabilities. For deaf and hard of hearing, use Relay 711