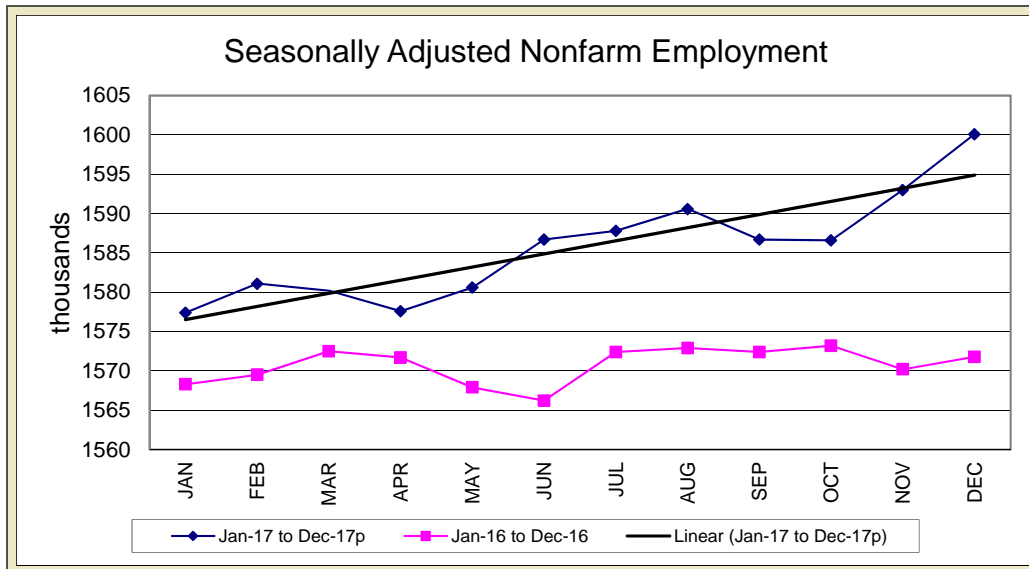


# STATE OF IOWA NONFARM EMPLOYMENT WORKFORCE DEVELOPMENT

DECEMBER 2017  
LMR MONTHLY

## MANUFACTURING BOOSTS NONFARM EMPLOYMENT



In December, Iowa establishments added 7,100 jobs and lifted the total number of jobs to 1,600,100. This month's increase marks the eighth monthly increase in 2017 versus just four months of losses. Growth was fueled by several sectors of the economy, particularly manufacturing, healthcare, and transportation. Additionally, the December gain follows another sizable increase in November. In total, private sectors advanced by 5,800 jobs this month. On the other hand, government added 1,300 jobs this month due to gains in local government and now stands 1,000 jobs higher than last year.

Manufacturing added the most jobs in December (+3,300) with the largest gains being in durable goods factories (+2,400). Non-durable goods factories added 900 jobs due in part to hiring in food production. This gain marks the fourth-consecutive for manufacturing to end the year. Healthcare and social assistance added 1,600 jobs to fuel all of the growth in the education and

healthcare super sector. Healthcare and social assistance also had a sizable gain in November (+1,200). Trade and transportation fared well due to larger-than-expected gains in transportation and warehousing this month and was up 1,400 jobs. Much of this spike was due to a surge in parcel delivery related to holiday shopping. Like years past, retail was somewhat sluggish to end the year and was down 300 jobs in December. This trend in decreasing retail employment may be partially attributable to a shift toward online shopping and decreased reliance on brick-and-mortar stores during the holidays. Smaller sector gains this month included leisure and hospitality (+1,000) and financial activities (+700). Private sector losses were limited to construction (-1,300), professional and business services (-500), and other services (-400).

Annually, the state of Iowa has gained 28,300 jobs. Manufacturing leads the way in jobs added with 11,700 over

the last twelve months. Growth for this sector began in May with 12,400 jobs being added over the past eight months. Education and healthcare has gained 6,900 jobs annually, followed by leisure and hospitality, up 6,600 jobs. Sector losses have been strongest in construction (-7,500) in the wake of a booming 2016. Smaller losses occurred in other services (-1,600) and information (-700).

Nationally, total nonfarm employment added 148,000 jobs with the largest gains occurring in healthcare, manufacturing, and construction. Annually, 2.1 million jobs have been added since last December.

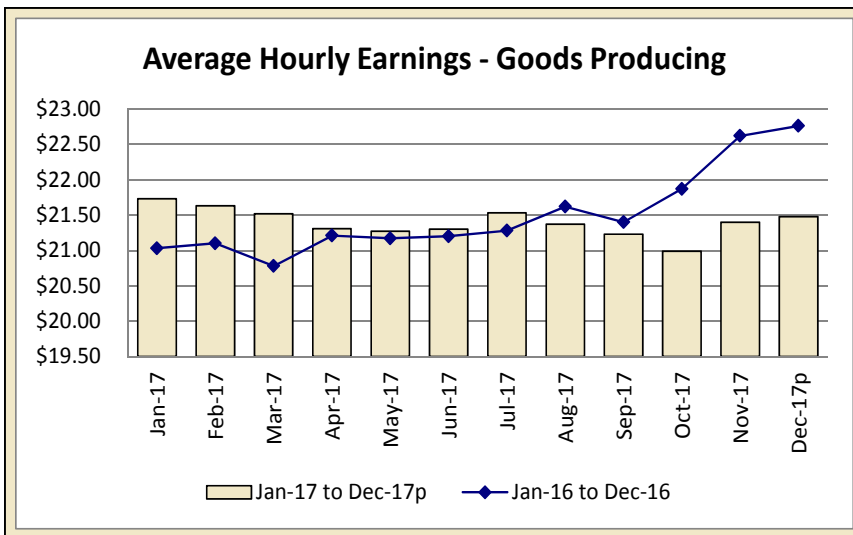
*For additional information, contact James Morris (515-281-8515)*

For additional information, contact James Morris (515-281-8515)

**METROPOLITAN STATISTICAL AREA  
SEASONALLY ADJUSTED NONFARM EMPLOYMENT (TOTAL NONFARM)**

| MSA                      | Dec-16 | Jan-17 | Feb-17 | Mar-17 | Apr-17 | May-17 | Jun-17 | Jul-17 | Aug-17 | Sep-17 | Oct-17 | Nov-17 | Dec-17p |
|--------------------------|--------|--------|--------|--------|--------|--------|--------|--------|--------|--------|--------|--------|---------|
| AMES                     | 52.8   | 53.8   | 53.9   | 53.6   | 53.7   | 53.1   | 53.4   | 53.4   | 54.3   | 53.8   | 53.8   | 53.9   | 53.6    |
| CEDAR RAPIDS             | 144.1  | 144.8  | 144.3  | 144.8  | 144.3  | 143.6  | 144.4  | 144.0  | 145.2  | 145.2  | 145.1  | 145.4  | 146.4   |
| DES MOINES/W. DES MOINES | 361.6  | 361.9  | 363.2  | 362.1  | 365.1  | 364.2  | 370.3  | 371.2  | 369.8  | 366.4  | 367.5  | 370.7  | 371.3   |
| DUBUQUE                  | 60.0   | 59.7   | 59.9   | 60.0   | 59.7   | 60.2   | 59.8   | 59.6   | 59.5   | 59.7   | 59.8   | 59.9   | 59.6    |
| IOWA CITY                | 100.9  | 102.5  | 102.1  | 102.4  | 103.2  | 102.8  | 103.4  | 103.7  | 104.1  | 104.6  | 103.7  | 104.9  | 103.9   |
| SIOUX CITY               | 87.8   | 88.2   | 88.5   | 88.4   | 88.2   | 89.3   | 88.2   | 87.9   | 87.9   | 87.9   | 87.5   | 87.5   | 88.0    |
| WATERLOO/CEDAR FALLS     | 91.1   | 91.2   | 91.2   | 90.8   | 90.6   | 90.6   | 90.5   | 90.0   | 90.6   | 91.0   | 90.4   | 90.7   | 90.7    |

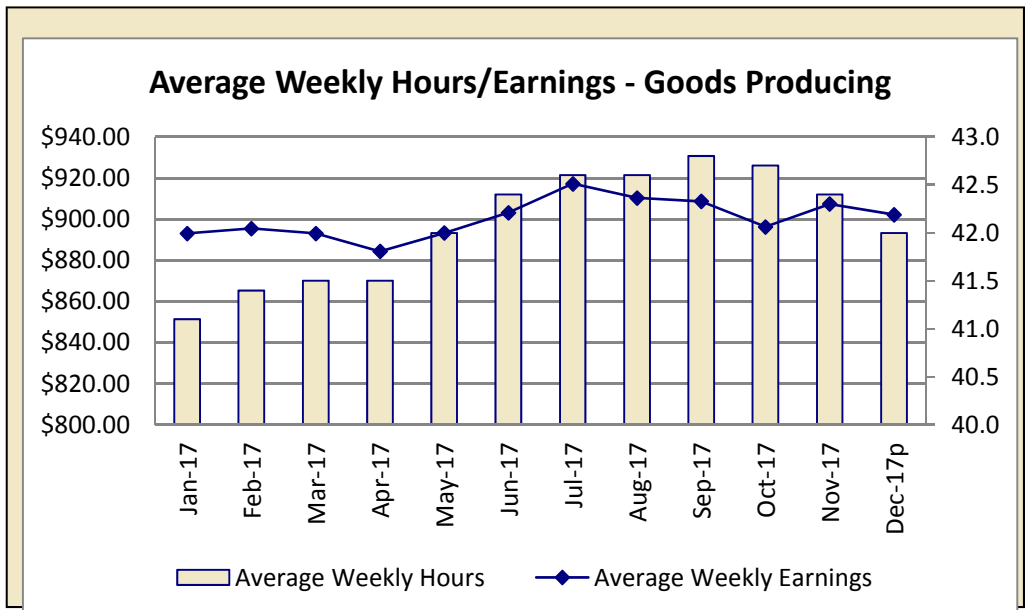
**IOWA'S HOURS & EARNINGS**



| Goods-producing Hours & Earnings |          |
|----------------------------------|----------|
| Average Weekly Earnings          | \$902.16 |
| Average Hourly Earnings          | \$21.48  |
| Average Weekly Hours             | 42.0     |

Production workers in Iowa's goods-producing sector averaged \$902.16 in December, down \$40.17 compared to this same time last year. Workers in the construction sector averaged \$964.18 per month and are down sharply from last year due to a reduction in overtime hours. Manufacturing workers averaged \$834.58 per week, up \$35.13 versus one year ago.

Within service sectors, retail trade workers have gained \$29.11 from last year's mark and averaged \$400.99 per week in wages. Financial activities workers have seen a slight dip in weekly earnings and averaged \$869.40 per week.



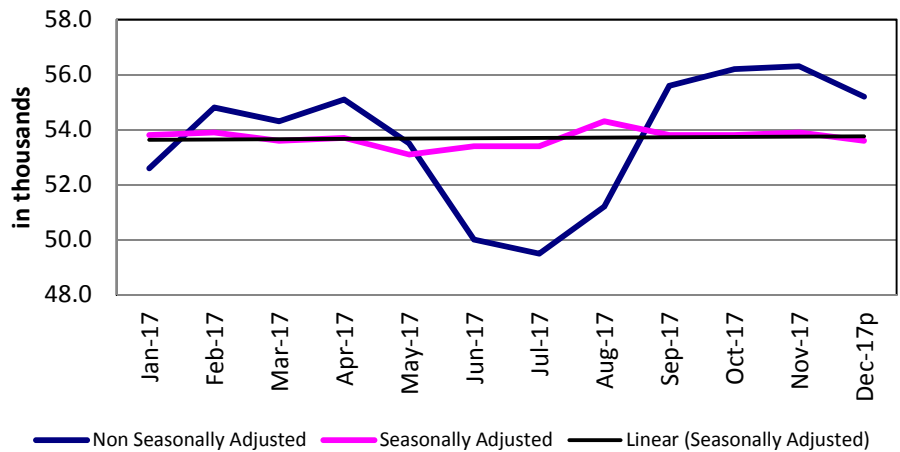
METROPOLITAN STATISTICAL AREAS

[CLICK TABLE FOR DATA](#)

| Ames MSA Employment                                    |        |
|--|--------|
| Total Nonfarm 17 <sup>p</sup>                          | 55,200 |
| Total Nonfarm 16                                       | 54,300 |
| % Change 1 Yr  | 1.66%  |
| Noteworthy Expanding and Contracting Industries (1 yr) |        |
| Goods Producing  | 4.62%  |
| State Government                                       | 0.00%  |

*p - preliminary data*

Ames - Nonfarm Employment



The Ames Metropolitan area decreased by 1,100 jobs to end the year. The monthly loss was large compared to the prior ten years, and partially due to an early paring of public education staff. Added up, government shed 700 jobs at the state level, although this sector remains up 100 jobs versus last year.

Within private sectors, service industries shed 300 jobs in December; however, these industries remain up 500 jobs annually. Goods-producing industries seasonally shed 100 jobs this month due to seasonal construction losses. This sector remains up 300 jobs versus last year.

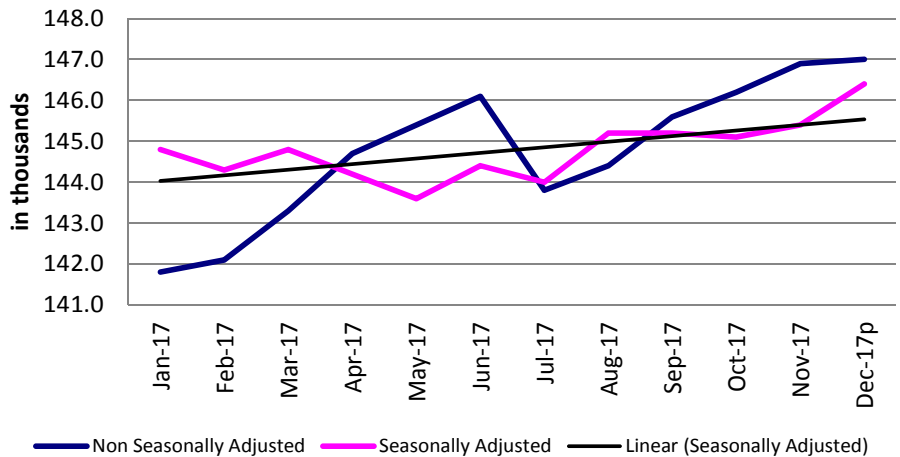
For additional information, contact James Morris (515-281-8515)

[CLICK TABLE FOR DATA](#)

| Cedar Rapids MSA Employment                            |         |
|--|---------|
| Total Nonfarm 17 <sup>p</sup>                          | 147,000 |
| Total Nonfarm 16                                       | 144,800 |
| % Change 1 Yr  | 1.52%   |
| Noteworthy Expanding and Contracting Industries (1 yr) |         |
| Prof & Business  | 4.23%   |
| Information  | -2.50%  |

*p - preliminary data*

Cedar Rapids - Nonfarm Employment



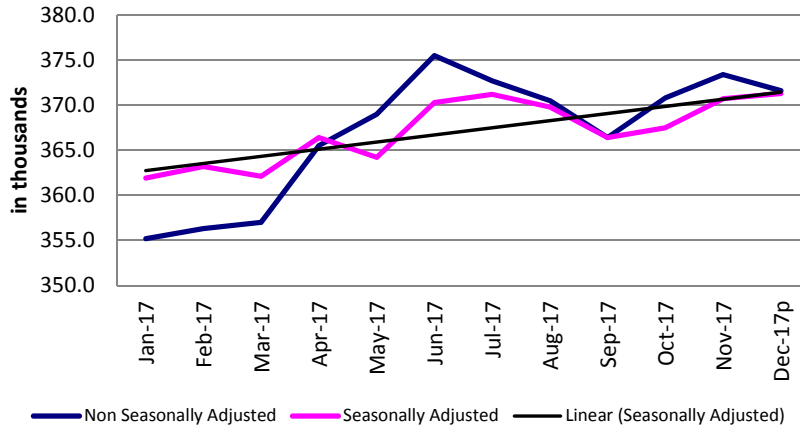
The Cedar Rapids metropolitan statistical area added 100 jobs, continuing expansion for the fifth consecutive month by a slim margin. Total nonfarm now stands at 147,000 jobs.

Employment has remained unchanged for three consecutive months in both manufacturing and information. Financial activities added 100 jobs following five months unchanged. Professional and business services is unchanged for the second month. Educational and health services has added 900 jobs over the past four months with an increase of 100 in December. Goods producing is down 400 jobs overall.

Over the year the area added 2,200 jobs with the largest gains in professional and business services (+600) and trade, transportation and warehousing (+600). Government added 300 jobs. Manufacturing added 100 jobs, financial activities increased by 200 jobs, and educational and health services gained 300 jobs from one year ago. The information sector has trimmed 100 jobs from one year ago.

For additional information, contact Dennis Schwartz (515-281-5754)

**Des Moines/West Des Moines - Nonfarm Employment**



[CLICK TABLE FOR DATA](#)

| <b>Des Moines MSA Employment</b>                       |         |
|--|---------|
| Total Nonfarm 17p                                      | 371,600 |
| Total Nonfarm 16                                       | 361,600 |
| % Change 1 Yr  | 2.77%   |
| Noteworthy Expanding and Contracting Industries (1 yr) |         |
| Prof & Business  | 5.83%   |
| Information  | -4.62%  |

p - preliminary data

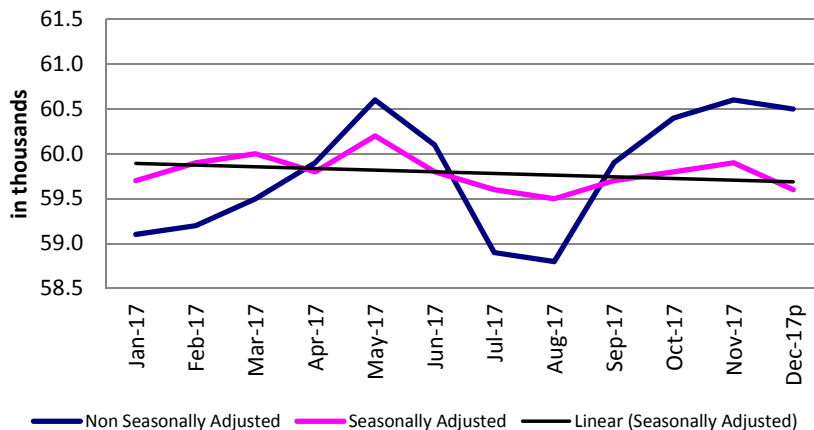
Total nonfarm employment in the Des Moines Metropolitan area decreased by 1,800 jobs in December. The monthly drop leaves the metro area up 10,000 jobs versus last year. This month's loss is somewhat high compared to the prior ten years, although it does follow usually high gains in October and November.

The largest monthly losses stemmed from professional and business services (-1,800) and were concentrated in administrative and support services. Despite this monthly decline, the professional and business services sector is up 2,800 jobs annually. Construction seasonally pared jobs in December (-1,300) and now trails last year's mark by 600 jobs. Losses over the past two months were larger than anticipated. Smaller losses this month occurred in leisure and hospitality (-100) and other services (-100). Alternatively, transportation and warehousing fueled a gain of 700 in the trade and transportation super sector. The financial sector added 600 jobs and has gained jobs for three consecutive months.

Annually, no sector has added more jobs than professional and business services (+2,800). Trade, transportation, and utilities has also advanced steadily (+2,100) and been fueled by recent gains in retail trade and transportation. Both education and healthcare and leisure and hospitality have advanced by 1,900 jobs over the past twelve months. Sector losses have been limited to just construction (-600) and information (-300).

For additional information, contact James Morris (515-281-8515)

**Dubuque - Nonfarm Employment**



[CLICK TABLE FOR DATA](#)

| <b>Dubuque MSA Employment</b>                          |        |
|--|--------|
| Total Nonfarm 17p                                      | 60,500 |
| Total Nonfarm 16                                       | 60,700 |
| % Change 1 Yr  | -0.17% |
| Noteworthy Expanding and Contracting Industries (1 yr) |        |
| Goods Producing  | 1.75%  |
| Trade & Transport                                      | -3.88% |

p - preliminary data

Dubuque establishments shed a slight 100 jobs in December, lowering total nonfarm employment to 60,500 jobs. Goods-producing industries pared 200 jobs due to seasonal decreases in construction industries. This was partially offset by a gain of 100 jobs in private services. Government was unchanged since November.

Annually, 200 jobs have been lost since last December. Private services have shed 500 jobs during that span. Much of the losses can be attributed to a lagging retail sector, although trade, transportation, and utilities combined have been down. Alternatively, goods-producing industries have advanced slightly (+200) as did government (+100).

For additional information, contact James Morris (515-281-8515)

METROPOLITAN STATISTICAL AREAS

[CLICK TABLE FOR DATA](#)

| Iowa City MSA Employment                        |         |
|---|---------|
| Total Nonfarm 17p                               | 104,600 |
| Total Nonfarm 16                                | 101,700 |
| % Change 1 Yr                                   | 2.85%   |
| Noteworthy Expanding and Contracting Industries |         |
| State Government                                | 2.96%   |
| Trade & Transport                               | -3.53%  |

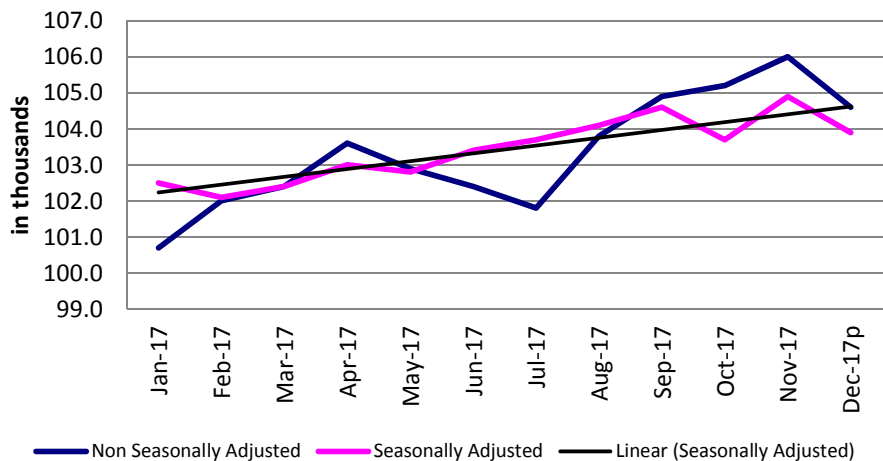
p - preliminary data

Nonfarm employment in the Iowa City metropolitan statistical area shed 1,400 jobs from last month, half of which is attributable to the government sector. State government pared 400 jobs and local government trimmed 300 jobs. Trade, transportation and warehousing shed 300 jobs. Leisure and hospitality pared 100 jobs.

The metro area has added 2,900 jobs from one year ago, boosted by gains of 1,200 in government and 1,400 in private service-providing sectors. Professional and business services added 100 jobs and leisure and hospitality added 200 jobs. Trade, transportation and warehousing shed 600 jobs.

For additional information, contact Dennis Schwartz (515-281-5754)

Iowa City - Nonfarm Employment



[CLICK TABLE FOR DATA](#)

| Sioux City MSA Employment                       |        |
|---|--------|
| Total Nonfarm 17p                               | 88,400 |
| Total Nonfarm 16                                | 88,300 |
| % Change 1 Yr                                   | 0.11%  |
| Noteworthy Expanding and Contracting Industries |        |
| Manufacturing                                   | 4.00%  |
| Retail Trade                                    | -3.57% |

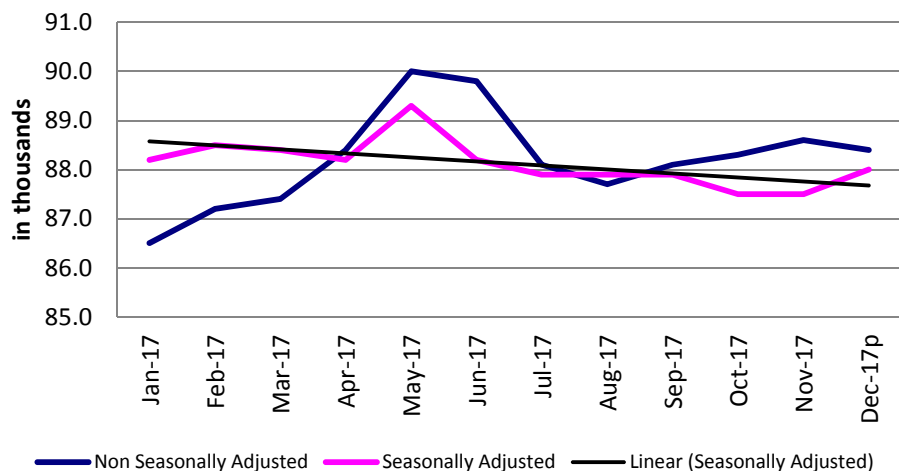
p - preliminary data

Employment in the Sioux City MSA is down 200 jobs from November. The one bright spot this month is manufacturing which gained 200 jobs, the largest single month gain in the sector since May 2017. Other sectors did not fare as well with trade, transportation and warehousing and professional and business services trimming 200 jobs each. Leisure and hospitality and government were unchanged.

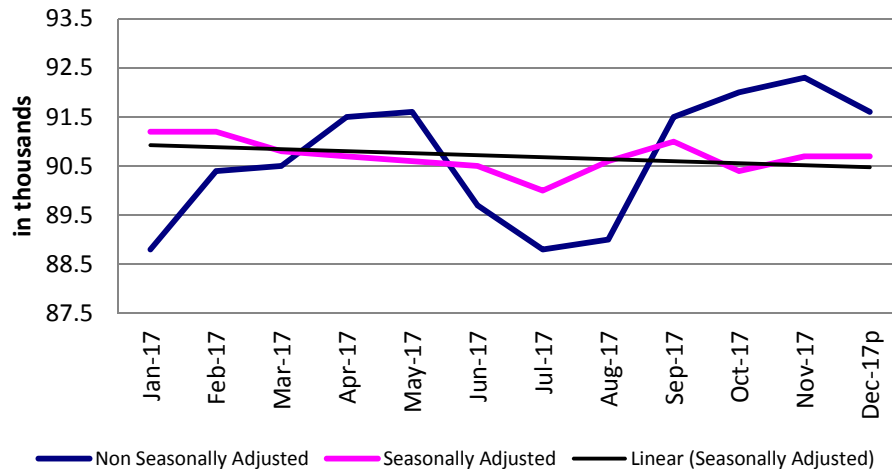
Overall, area employment is just 100 above one year ago. Goods producing industries have added 500 jobs, all in manufacturing. Trade, transportation and warehousing pared 500 jobs. Professional and business services shed 200 jobs and government employment is 100 below one year ago.

For additional information, contact Dennis Schwartz (515-281-5754)

Sioux City - Nonfarm Employment



**Waterloo/Cedar Falls - Nonfarm Employment**



[CLICK TABLE FOR DATA](#)

**Waterloo/Cedar Falls MSA Employment**

|   |        |
|---|--------|
| Total Nonfarm 17 <sup>p</sup>                   | 91,600 |
| Total Nonfarm 16                                | 92,000 |
| % Change 1 Yr                                   | -0.43% |
| Noteworthy Expanding and Contracting Industries |        |
| Non-durable Mfg                                 | 4.17%  |
| Retail Trade                                    | -8.55% |

*p - preliminary data*

The Waterloo/Cedar Falls metropolitan statistical area's total nonfarm employment decreased 700 jobs from the previous month and stands at 91,600. Small gains (+100) in manufacturing, financial activities and educational and health services helped offset the losses in government (-300), trade, transportation and warehousing (-200) and professional and business services (-100).

Over the year, employment is down 400 jobs due to a mix of gains and losses, most notably a loss of 700 jobs in trade, transportation and warehousing. Retail trade alone has pared 1,000 jobs from one year ago. Manufacturing added 200 jobs. Educational and health services added 300 jobs and professional and business services gained 100 jobs.

*For additional information, contact Dennis Schwartz (515-281-5754)*

**LINKS TO ADDITIONAL INFORMATION**

Click on a link below to visit web page

**Worker Adjustment & Retraining Notification Act (WARN)**

**U.S. Bureau of Labor Statistics**

**Unemployment Insurance Benefit Payments**

**Consumer Price Index (CPI)**

**Unemployment Insurance Benefit Paid by County**

**Employment Statistics for Canada**

**Current Employment Statistics**

Each month the **Current Employment Statistics** program surveys about 143,000 businesses and government agencies, representing approximately 588,000 individual worksites, in order to provide detailed industry data on employment, hours, and earnings of workers on nonfarm payrolls for all 50 States, the District of Columbia, Puerto Rico, the Virgin Islands, and about 450 metropolitan areas and divisions.

**Contact Information**

Iowa Workforce Development  
Employment Statistics Bureau  
1000 East Grand Avenue  
Des Moines, IA 50319-0209  
Tel: 515-281-8515  
Tel: 800-532-9793  
Fax: 515-281-8195  
Email: trends@iowa.gov  
www.iowaworkforce.org

*Equal opportunity employer/program. Auxiliary aids and services are available upon request to individuals with disabilities. For deaf and hard of hearing, use Relay 711*