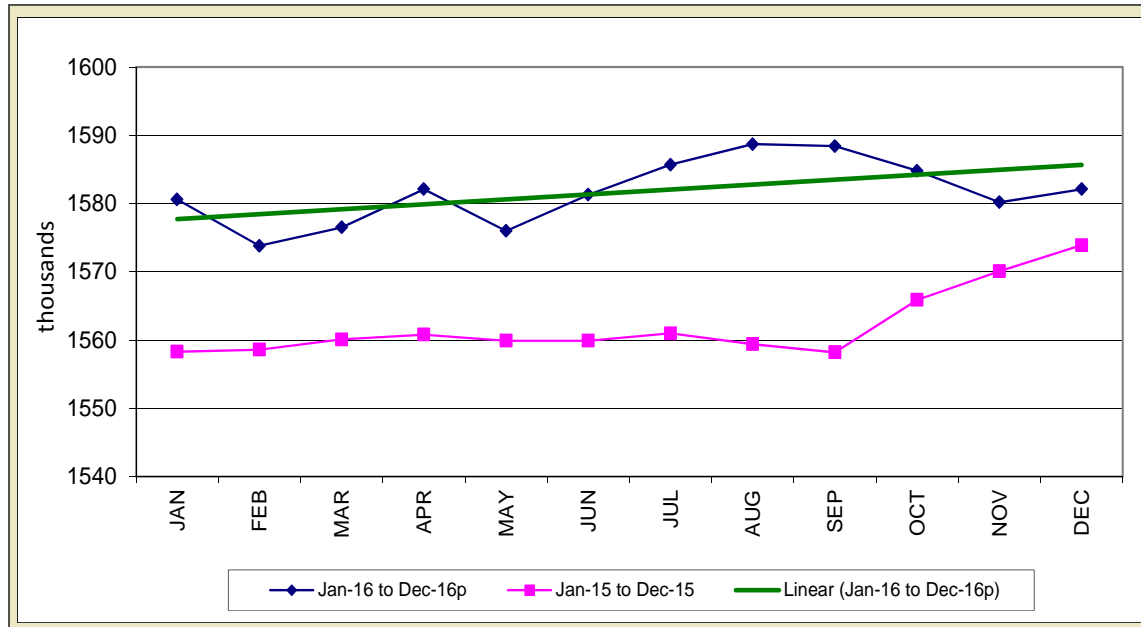


# STATE OF IOWA NONFARM EMPLOYMENT WORKFORCE DEVELOPMENT

DECEMBER 2016  
LMR MONTHLY

**RETAIL TRADE AMONG SECTORS CONTRIBUTING TO THREE MONTH JOBS DECLINE**



Total nonfarm employment added 1,900 jobs in December and will finish the year at 1,582,100 jobs. This month's gain halts three consecutive months of losses among Iowa's establishments. Within the private sector, goods-producing industry gains of 1,000 were exactly offset by service industry losses. Government added 1,900 jobs and was fueled by higher-than-expected growth at the local government level. Compared to last year, government has added 1,500 jobs.

The professional and business services sector added the most jobs in December (+1,300) and was fueled by hiring in professional, scientific, and technical services (+800). In total, 2,500 jobs have been added over the past two months for this sector. Manufacturing added 900 jobs following losses in the prior two months. The majority of the gain occurred in nondurable goods factories (+600). Although small, Iowa's financial sector gained 300 jobs and marked three-consecutive months of

gains. Other sectors adding jobs in December included education and health care services, construction, and other services. Alternatively, losses in December were heaviest in leisure and hospitality (-1,600) and due to larger-than-expected seasonal declines in accommodations and food services. Retail trade reflected another sluggish month of holiday sales and fueled a loss of 1,100 in trade and transportation. Weak retail hiring may be a symptom of consumers bypassing brick-and-mortar retail establishments in favor of online retailers. The only other decline this month occurred in information services (-300).

Despite layoffs over the past several months, Iowa remains up 8,200 jobs annually. Individually, no sector has added more jobs than construction (+6,900). This sector added almost half of all the jobs gained (42 percent) versus last December. Finance remains markedly up (+4,400) and has displayed strong hiring throughout this past year,

as did education and health care (+3,900). Despite this month's gain, manufacturing still remains strikingly lower than last year's mark (-7,000). Losses have been evenly split between durable and nondurable factory jobs. Information services is second in annual losses (-1,400), although much of this loss is due to streamlining of services and a change in how information is being used by customers. Professional and business services has recovered somewhat during the past couple months and is now down just 900 jobs following a turbulent year with losses peaking at 3,700 jobs a few months ago.

Nationally, nonfarm employment added 156,000 jobs in December. The largest gains occurred in health care and social assistance and food services. In total, 2.2 million jobs were added in 2016, equating to a gain of 1.5 percent annually. In contrast, Iowa's growth rate was 0.5 percent in December.

*For additional information, contact James Morris (515-281-8515)*

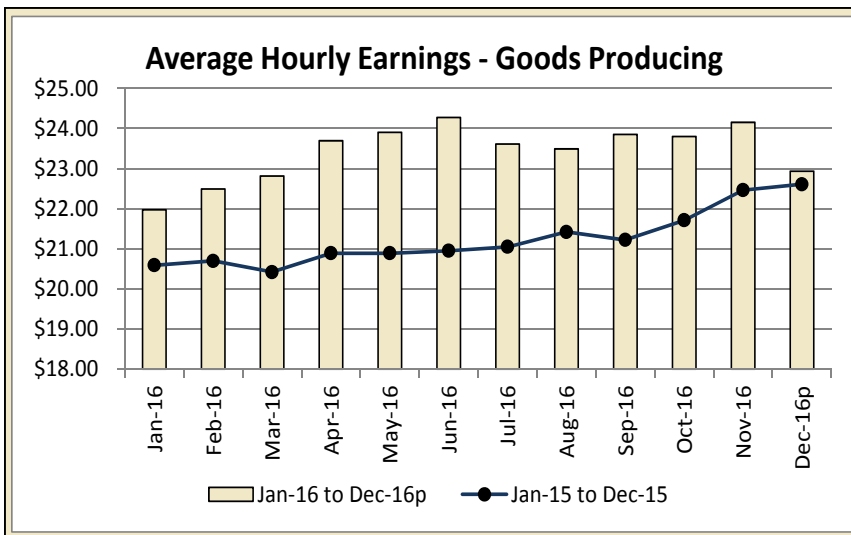
For additional information, contact James Morris (515-281-8515)

**METROPOLITAN STATISTICAL AREA  
SEASONALLY ADJUSTED NONFARM EMPLOYMENT (TOTAL NONFARM)**

MSA	Dec-15	Jan-16	Feb-16	Mar-16	Apr-16	May-16	Jun-16	Jul-16	Aug-16	Sep-16	Oct-16	Nov-16	Dec-16p
AMES	52.8	53.1	53.2	52.7	53.6	53.4	53.5	53.5	53.2	53.1	53.2	53.5	53.8
CEDAR RAPIDS	143.1	144.9	144.0	144.5	144.1	143.4	145.0	144.2	144.5	143.9	144.7	144.2	145.5
DES MOINES/W. DES MOINES	350.0	352.0	349.6	349.0	352.1	354.8	357.0	356.5	357.0	353.7	352.4	355.1	355.4
DUBUQUE	60.3	60.5	60.3	60.6	60.4	60.6	61.1	60.6	60.7	60.9	61.0	60.8	61.3
IOWA CITY	99.2	99.1	99.4	99.6	99.9	98.6	100.9	101.5	101.3	102.2	101.6	101.2	100.1
SIOUX CITY *													
WATERLOO/CEDAR FALLS	90.7	91.4	90.7	90.7	90.9	90.4	90.6	90.1	90.3	89.7	89.8	89.4	90.2

\* Seasonally adjusted data for the Sioux City MSA is not available due to redefinition of the metropolitan area to now include Plymouth County

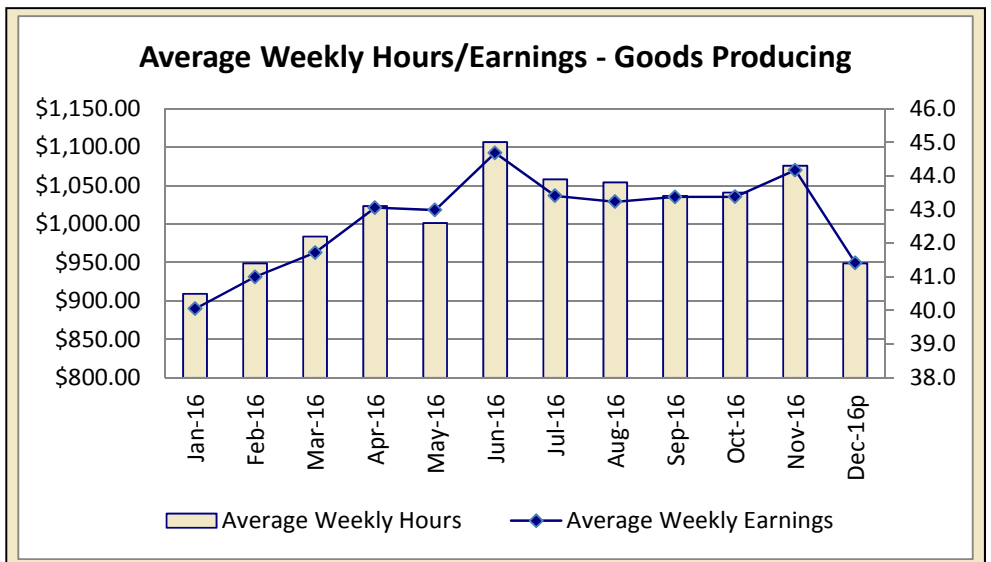
**IOWA'S HOURS & EARNINGS**



Goods-producing Hours & Earnings	
Average Weekly Earnings	\$949.30
Average Hourly Earnings	\$22.93
Average Weekly Hours	41.4

Production workers in Iowa's goods-producing sector averaged \$949.30 a week in December, down \$120.55 compared to November and \$22.93 less than one year ago. Much of the drop was due to construction workers seasonally shedding hours as the cold weather finally halted several projects. Although several hours of overtime were pared from schedules in December, average weekly wages in construction are still just \$9.92 less than one year ago and now rest at \$1,204.74. Manufacturing workers averaged \$799.87 in December, up \$6.36 versus last December.

Among service sectors, Iowa's retail production workers averaged \$365.26 in December, up \$12.08 versus last year. Finance workers saw little change versus last year and averaged \$886.73 a week in December.



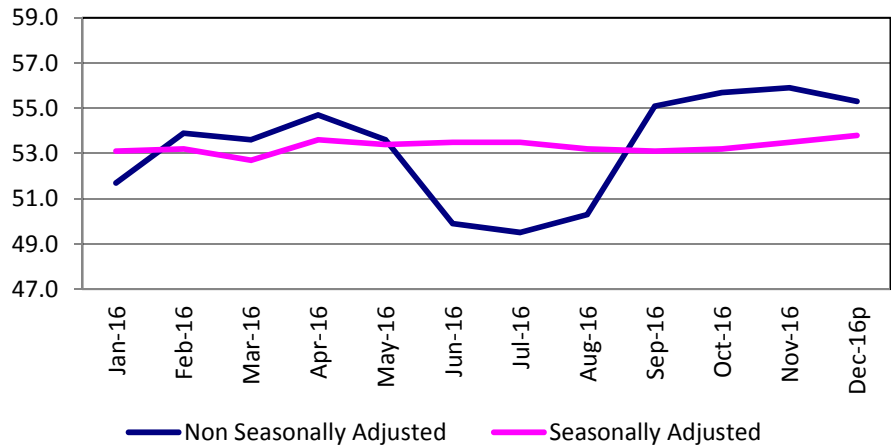
METROPOLITAN STATISTICAL AREAS

[CLICK TABLE FOR DATA](#)

Ames MSA Employment	
Total Nonfarm 15 <sup>p</sup>	55,300
Total Nonfarm 14	54,300
% Change 1 Yr	1.84%
Noteworthy Expanding and Contracting Industries (1 yr)	
Goods Producing	4.55%
Government	0.00%

*p - preliminary data*

Ames - Nonfarm Employment



The Ames Metro area decreased by 600 jobs and now rest at 55,300 in December. Despite the decline, the Ames area remains up 1,000 versus on year ago. This month's decline is fairly average for December and was fueled by a drop of 300 in government. Private services pared 200 jobs, and goods producing industries shed 100 jobs.

Annually, private services have been responsible for much of the growth versus last December. A total of 700 jobs have been gained over the last twelve months. Goods producing industries have increased by 300 jobs. Government is unchanged versus on year ago.

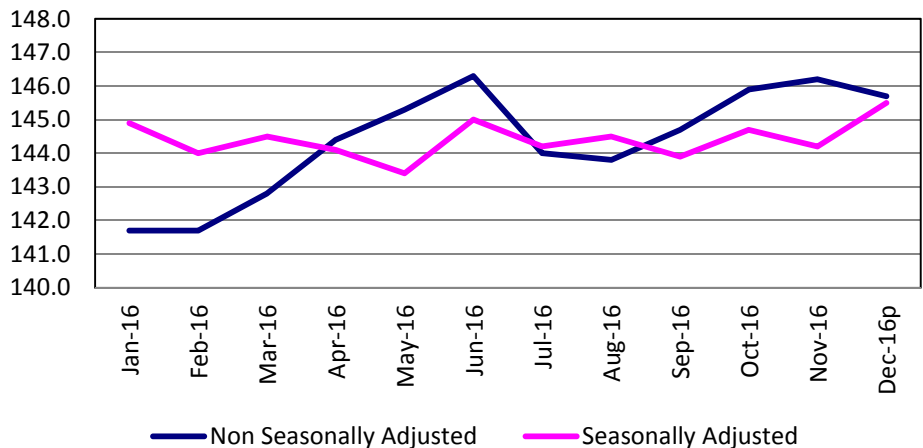
*For additional information, contact James Morris (515-281-8515)*

[CLICK TABLE FOR DATA](#)

Cedar Rapids MSA Employment	
Total Nonfarm 15 <sup>p</sup>	145,700
Total Nonfarm 14	143,800
% Change 1 Yr	1.32%
Noteworthy Expanding and Contracting Industries (1 yr)	
Prof & Bus Services	8.27%
Information	-4.65%

*p - preliminary data*

Cedar Rapids - Nonfarm Employment



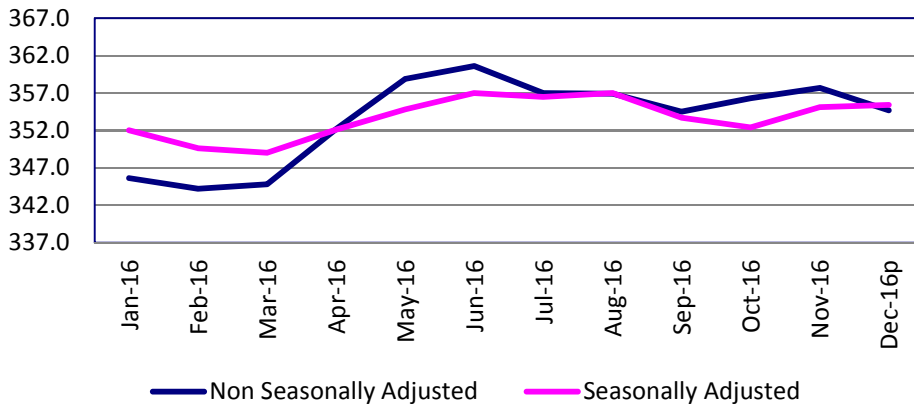
The Cedar Rapids metropolitan statistical area shed 500 nonfarm jobs from November, and now stands at 145,700. Total nonfarm employment in the metro area is 1,900 above one year ago.

Government is the only sector with a jobs gain from last month, adding just 100 jobs. Natural resources and construction experienced the greatest loss, shedding 300 jobs in an expected seasonal decline. Leisure and hospitality was close behind with a decline of 200 jobs, also seasonal in nature. Professional and business services also pared 100 jobs. Trade, transportation and warehousing was unchanged due to a loss of 200 in retail trade being offset by an equal gain in transportation, warehousing and utilities.

Professional and business services added 1,100 jobs from one year ago to lead all sectors. The next largest increase pales in comparison, with educational and health services adding 300 jobs. Manufacturing employment is 100 below one year ago.

*For additional information, contact Dennis Schwartz (515-281-5754)*

**Des Moines/West Des Moines -  
Nonfarm Employment**



[CLICK TABLE FOR DATA](#)

Des Moines MSA Employment	
Total Nonfarm 15p	354,700
Total Nonfarm 14	350,600
% Change 1 Yr	1.17%
Noteworthy Expanding and Contracting Industries (1 yr)	
Mining & Construct	7.47%
Government	-3.01%

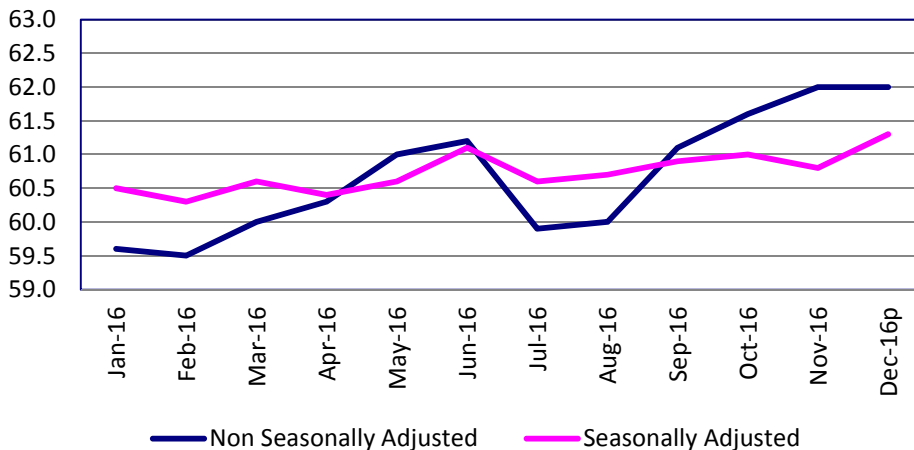
p - preliminary data

The Des Moines metro total nonfarm employment experienced a seasonal decrease in December and dropped to 354,700 jobs. December typically sees some seasonal paring of jobs, but this year's drop is historically large. Much of the decline was due to job declines in professional and business services (-1,400), particularly administrative support and management services (-1,000). Leisure and hospitality also experienced a seasonal decline this month, although the December drop of 1,100 jobs was higher than the prior ten-year average. Construction pared 1,000 jobs and was expected following a prosperous year for the industry. Those industries adding jobs in December included trade, transportation and utilities (+400) which added jobs despite a weak holiday retail season. All other gains were small and included financial activities, education and health care services, and government.

Since last January, the Des Moines metro has added 4,100 jobs. Job growth has been spurred by financial activities (+1,400) more than all other sectors. Leisure and hospitality and construction tied for the second-most jobs added (+1,300), followed by education and health care services (+1,200). The only private sector losses were in manufacturing (-200) and information services (-200). Government trails last year's level due in part to a shift in seasonality; however, it is expected to recover much of the loss in January.

For additional information, contact James Morris (515-281-8515)

**Dubuque - Nonfarm Employment**



[CLICK TABLE FOR DATA](#)

Dubuque MSA Employment	
Total Nonfarm 15p	62,000
Total Nonfarm 14	61,200
% Change 1 Yr	0.00%
Noteworthy Expanding and Contracting Industries (1 yr)	
Pvt Service Provide	1.56%
Trade & Transport	-3.91%

p - preliminary data

The Dubuque Metro total nonfarm employment experienced little movement in December and remained at 62,000 jobs. This month typically does not experience any seasonality in the area, so for employment to remain unchanged is not unexpected. Jobs were added in private service (+200) but were offset by losses in goods-producing industries (-200). Government was unchanged.

Compared to last year, the Dubuque area is up 800 jobs. The majority of the gain has come from private services (+700), although government is up 100 jobs as well.

For additional information, contact James Morris (515-281-8515)

METROPOLITAN STATISTICAL AREAS

[CLICK TABLE FOR DATA](#)

Iowa City MSA Employment	
Total Nonfarm 15p	101,200
Total Nonfarm 14	100,000
% Change 1 Yr	1.20%
Noteworthy Expanding and Contracting Industries	
Leisure & Hospitality	3.03%
Goods Producing	-3.03%

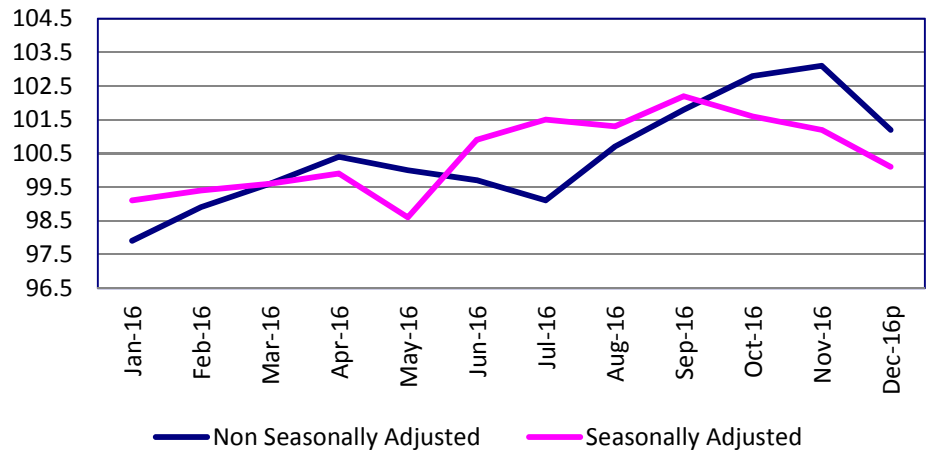
p - preliminary data

Nonfarm employment in the Iowa City metropolitan statistical area pared 1,900 jobs from last month. Government represented the bulk of that loss with 800 fewer jobs as is usually expected in the holiday season. Leisure and hospitality shed 300 jobs and professional and business services is down 100 jobs.

The metro area has added 1,200 jobs from one year ago, boosted by a gain of 700 in government and smaller gains in leisure and hospitality and trade, transportation and warehousing. Professional and business services is unchanged and goods producing industries have pared 300 jobs.

For additional information, contact Dennis Schwartz (515-281-5754)

Iowa City - Nonfarm Employment



[CLICK TABLE FOR DATA](#)

Sioux City MSA Employment	
Total Nonfarm 15p	88,300
Total Nonfarm 14	89,000
% Change 1 Yr	-0.79%
Noteworthy Expanding and Contracting Industries	
Leisure & Hospitality	2.50%
Manufacturing	-3.31%

p - preliminary data

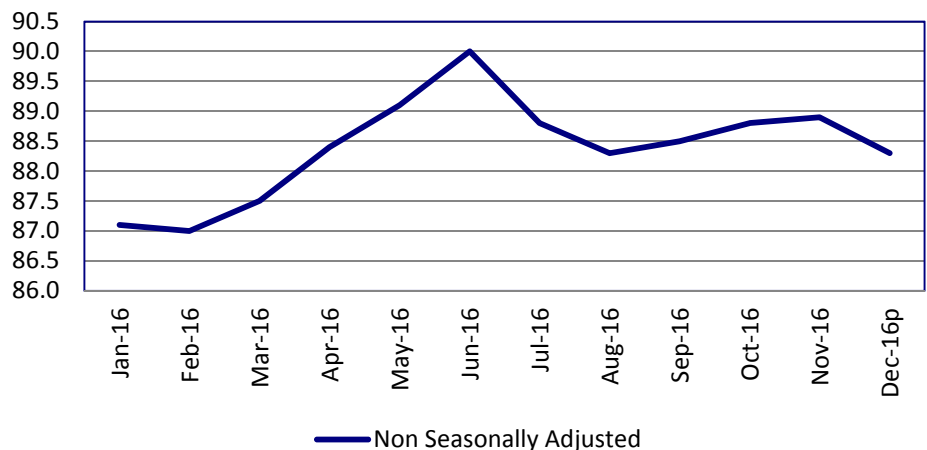
The Sioux City MSA has been redefined. It now includes: Dixon and Dakota Counties in Nebraska, Union County in South Dakota, and Woodbury and Plymouth Counties in Iowa.

Employment in the Sioux City MSA is down 600 jobs from November. Goods producing shed 400, although manufacturing has added 100 jobs. Leisure and hospitality contributed to the loss, shedding 200 jobs. Manufacturing is the only sector with a gain with 100 additional jobs in non-durable goods.

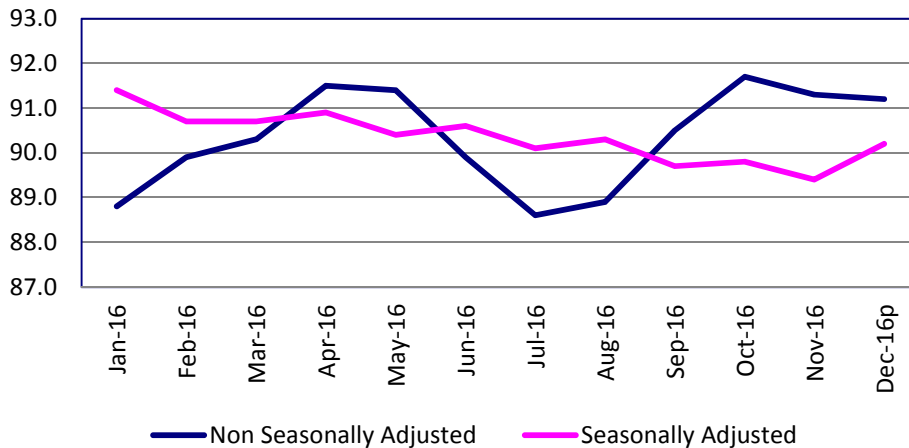
Overall, the area has 700 fewer jobs from one year ago. Goods producing has pared 500 jobs, including 500 from manufacturing. Leisure and hospitality is the only sector to add jobs from one year ago with an increase of 200 jobs.

For additional information, contact Dennis Schwartz (515-281-5754)

Sioux City - Nonfarm Employment



**Waterloo/Cedar Falls - Nonfarm Employment**



[CLICK TABLE FOR DATA](#)

<b>Waterloo/Cedar Falls MSA Employment</b>	
Total Nonfarm 15p	91,200
Total Nonfarm 14	91,700
% Change 1 Yr	-0.55%
Noteworthy Expanding and Contracting Industries	
Financial Activities	2.08%
State Government	-5.77%

*p - preliminary data*

The Waterloo/Cedar Falls metropolitan statistical area's total nonfarm employment is down 100 jobs from the previous month and stands at 91,200. Trade, transportation and warehousing led all sectors with a gain of 400 jobs due to adding 300 jobs in retail trade. This is the highest gain in retail trade recorded for November to December in the area. Manufacturing added 200 jobs, all in durable goods manufacturing. On the other hand, leisure and hospitality pared 200 jobs and professional and business services is down 100 jobs.

Over the year, employment is down 500 jobs. Manufacturing, financial activities and trade, transportation and warehousing each added 100 jobs. The additional manufacturing jobs are all in durable goods manufacturing (+300), however much of the gain was offset by losses in non-durable goods jobs. Government shed 300 jobs, all in state government. The remainder of the losses were in various service providing industries.

*For additional information, contact Dennis Schwartz (515-281-5754)*

**LINKS TO ADDITIONAL INFORMATION**

Click on a link below to visit web page

**Worker Adjustment & Retraining Notification Act (WARN)**

**U.S. Bureau of Labor Statistics**

**Unemployment Insurance Benefit Payments**

**Consumer Price Index (CPI)**

**Unemployment Insurance Benefit Paid by County**

**Employment Statistics for Canada**

**Current Employment Statistics**

Each month the **Current Employment Statistics** program surveys about 143,000 businesses and government agencies, representing approximately 588,000 individual worksites, in order to provide detailed industry data on employment, hours, and earnings of workers on nonfarm payrolls for all 50 States, the District of Columbia, Puerto Rico, the Virgin Islands, and about 450 metropolitan areas and divisions.

**Contact Information**

Iowa Workforce Development  
Employment Statistics Bureau  
1000 East Grand Avenue  
Des Moines, IA 50319-0209  
Tel: 515-281-8515  
Tel: 800-532-9793  
Fax: 515-281-8195  
Email: trends@iowa.gov  
www.iowaworkforce.org

*Equal opportunity employer/program. Auxiliary aids and services are available upon request to individuals with disabilities. For deaf and hard of hearing, use Relay 711*