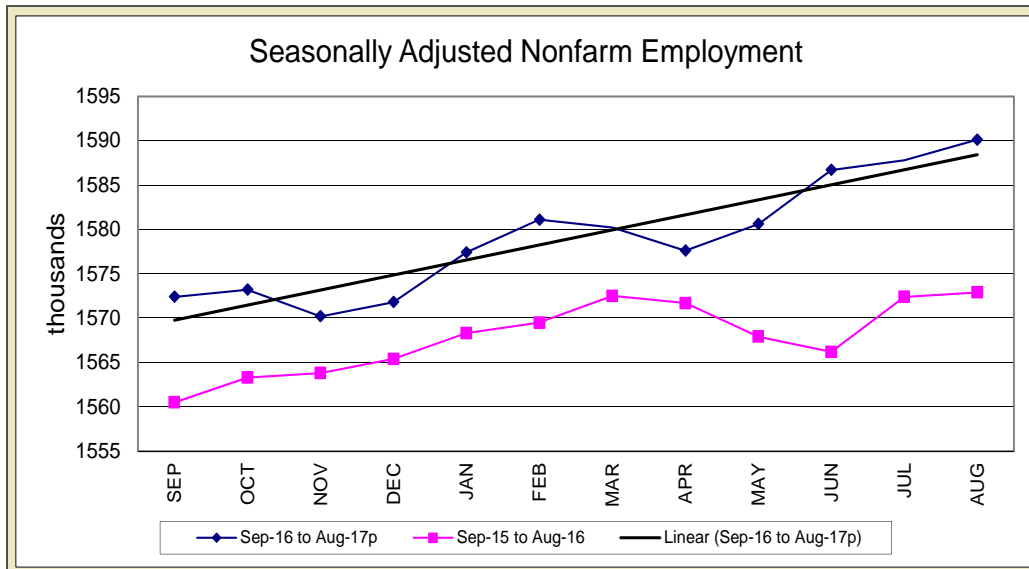


STATE OF IOWA NONFARM EMPLOYMENT WORKFORCE DEVELOPMENT

AUGUST 2017
LMR MONTHLY

FOUR MONTHS OF GAIN IN NONFARM EMPLOYMENT



August marked the fourth-consecutive gain for total nonfarm employment for the State of Iowa. The monthly increase of 2,300 jobs lifted the total to 1,590,100 jobs. Goods-producing industries were sluggish in August, paring 1,000 jobs. Conversely, service sectors gained 3,300 jobs. In total, five private super sectors pared employment this month versus four that gained employment. Government was unchanged this month with declines at the local and federal levels exactly offsetting the state government gains. Compared to last August, government is down 2,000 jobs due to local government cutbacks.

The education and health services sector added the most jobs in August (+2,500) and was fueled by growth in healthcare and social services (+1,900). This month's gain marks the ninth-straight gain for this super sector. Healthcare and social assistance alone has been responsible for a majority of these job

gains. Elsewhere, retail trade posted gains again this month (+800) leading to a gain of 1,600 jobs in trade and transportation. Transportation and warehousing also fared well in August and was up 700 jobs. Other gains this month were seen in other services (+1,300) and professional and business services (+1,000). Losses this month were largest in leisure and hospitality (-1,500) with declines nearly equal in both arts and entertainment (-800) and accommodations and food services (-700). Financial activities posted the first sector loss since last August (-1,300). Finance and insurance industries were responsible for most of the loss (-1,100), although real estate and rental activities shed 200 jobs. Construction has also trended down following record highs last year (-900). This month's loss marks the fifth-straight decline for this industry.

Annually, nonfarm employment remains up 17,200 jobs. Healthcare and social assistance has been

responsible for much of the growth with 9,300 jobs added, more than offsetting the small drop in the partner sector of educational services. Trade, transportation and utilities have gained 5,400 jobs due to expansion in wholesale trade and transportation and warehousing. Aside from information services (-1,500), annual losses have been limited to construction industries (-5,900) which are partly due to the completion of large-scale projects ending over the past twelve months. The preliminary August mark compares closely to the State's 2014 level before the construction boom began.

Nationally, total nonfarm employment gained 156,000 jobs in August. Growth was evident in manufacturing (+36,000), construction (+28,000), and professional and technical services (+22,000). Since last August, 2.1 million jobs have been added equating to a 1.4 percent annual growth rate.

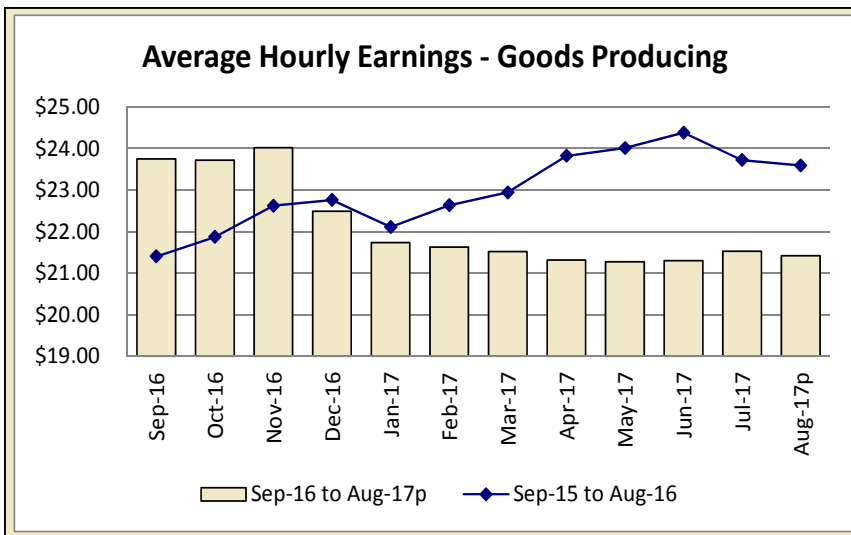
For additional information, contact James Morris (515-281-8515)

For additional information, contact James Morris (515-281-8515)

**METROPOLITAN STATISTICAL AREA
SEASONALLY ADJUSTED NONFARM EMPLOYMENT (TOTAL NONFARM)**

| MSA | Aug-16 | Sep-16 | Oct-16 | Nov-16 | Dec-16 | Jan-17 | Feb-17 | Mar-17 | Apr-17 | May-17 | Jun-17 | Jul-17 | Aug-17p |
|--------------------------|--------|--------|--------|--------|--------|--------|--------|--------|--------|--------|--------|--------|---------|
| AMES | 52.6 | 52.7 | 52.6 | 52.7 | 52.8 | 53.8 | 53.9 | 53.6 | 53.7 | 53.1 | 53.4 | 53.4 | 54.5 |
| CEDAR RAPIDS | 144.2 | 143.9 | 143.6 | 143.5 | 144.1 | 144.8 | 144.3 | 144.8 | 144.3 | 143.6 | 144.4 | 144.0 | 145.2 |
| DES MOINES/W. DES MOINES | 359.3 | 358.9 | 359.1 | 360.9 | 361.6 | 361.9 | 363.2 | 362.1 | 365.1 | 364.2 | 370.3 | 371.2 | 371.6 |
| DUBUQUE | 59.5 | 59.3 | 59.8 | 59.8 | 60.0 | 59.7 | 59.9 | 60.0 | 59.7 | 60.2 | 59.8 | 59.6 | 59.5 |
| IOWA CITY | 101.2 | 101.3 | 101.6 | 101.4 | 100.9 | 102.5 | 102.1 | 102.4 | 103.2 | 102.8 | 103.4 | 103.7 | 104.1 |
| SIoux CITY | 88.6 | 88.1 | 87.5 | 87.7 | 87.8 | 88.2 | 88.5 | 88.4 | 88.2 | 89.3 | 88.2 | 87.9 | 88.0 |
| WATERLOO/CEDAR FALLS | 91.1 | 91.0 | 91.0 | 90.8 | 91.1 | 91.2 | 91.2 | 90.8 | 90.6 | 90.6 | 90.5 | 90.0 | 90.6 |

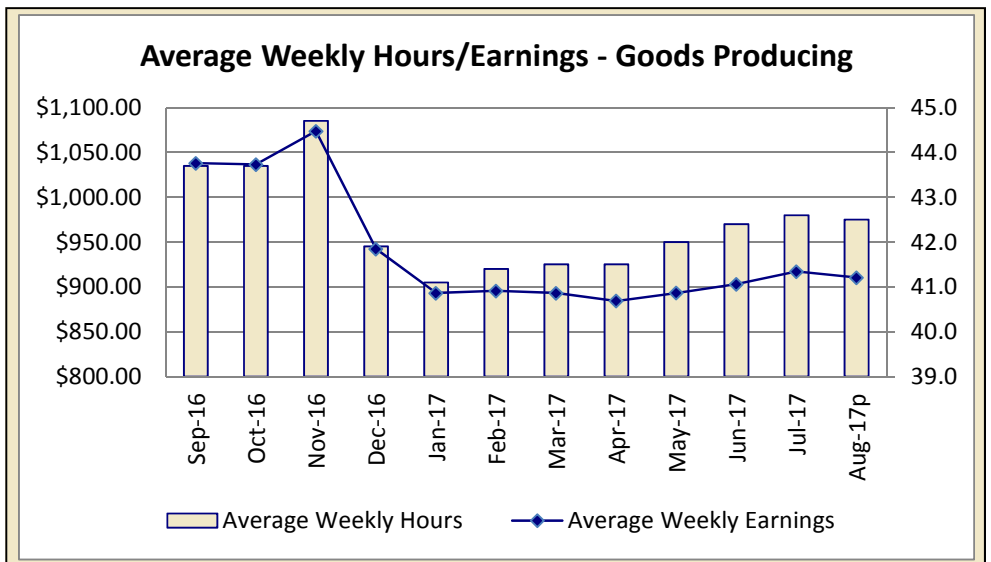
IOWA'S HOURS & EARNINGS



| Goods-producing Hours & Earnings | |
|----------------------------------|----------|
| Average Weekly Earnings | \$910.35 |
| Average Hourly Earnings | \$21.42 |
| Average Weekly Hours | 42.5 |

Production workers in Iowa's goods-producing sector averaged \$910.35 a week in August, down slightly compared to last month, and \$120.53 lower than one year ago. In 2016, construction workers were working far more overtime in an effort to complete large projects. Overall, construction workers have seen their average weekly hours drop from 45.9 to 42.4 this year. The average weekly wages for construction workers was \$1,071.87 in August. Manufacturing workers averaged \$806.99 a week with a moderate gain of \$41.13 compared to last year.

Iowa's retail workers averaged \$391.60 a week in August, up \$34.63 versus one year ago. Finance workers experienced a decrease both over the month (-\$39.28) and annually (-\$16.92) and averaged \$867.96 per week in wages.



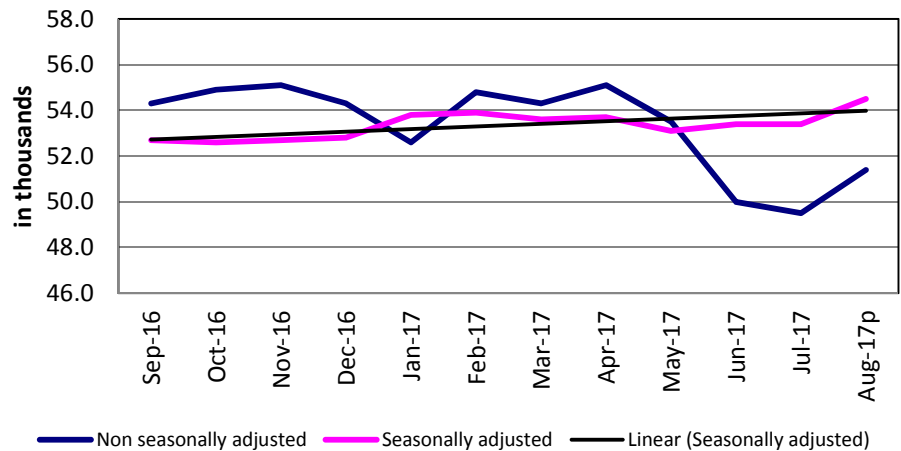
METROPOLITAN STATISTICAL AREAS

[CLICK TABLE FOR DATA](#)

| Ames MSA Employment | |
|--|--------|
| Total Nonfarm 15p | 51,400 |
| Total Nonfarm 14 | 49,600 |
| % Change 1 Yr | 3.63% |
| Noteworthy Expanding and Contracting Industries (1 yr) | |
| State Government | 6.25% |
| Local Government | 0.00% |

p - preliminary data

Ames - Nonfarm Employment



The Ames metropolitan statistical area added 1,900 jobs in August and now rests at 51,400 jobs. Government was responsible for all of the jobs gains this month (+2,000) and was primarily due to state government education seasonally increasing. Private services pared 100 jobs and goods-producing industries were unchanged since July.

Since last August, 1,800 jobs have been added in Ames. Private services have added 1,000 jobs and government is up 700 jobs. Goods-producing industries have increased slightly (+100).

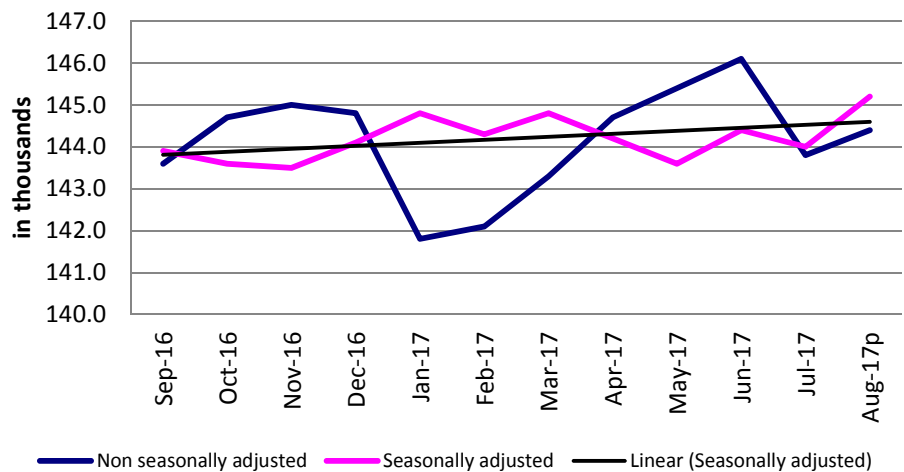
For additional information, contact James Morris (515-281-8515)

[CLICK TABLE FOR DATA](#)

| Cedar Rapids MSA Employment | |
|--|---------|
| Total Nonfarm 15p | 144,400 |
| Total Nonfarm 14 | 143,300 |
| % Change 1 Yr | 0.77% |
| Noteworthy Expanding and Contracting Industries (1 yr) | |
| Prof & Business Svcs | 4.26% |
| Information | -4.76% |

p - preliminary data

Cedar Rapids - Nonfarm Employment



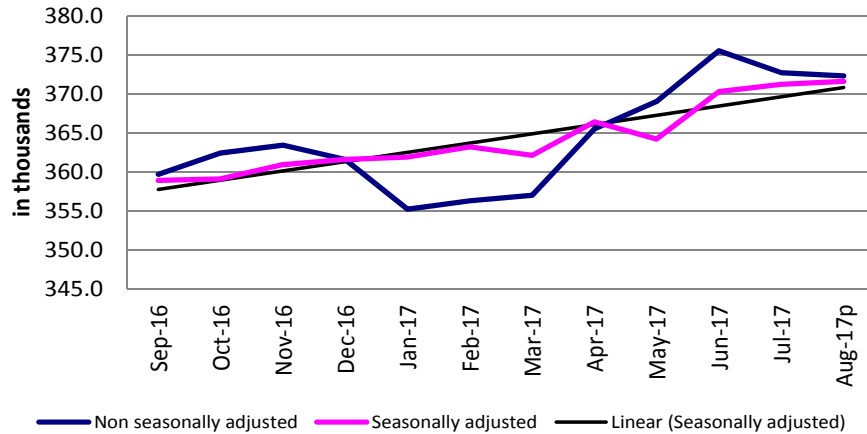
Employment in the Cedar Rapids metropolitan statistical area experienced a partial rebound following a July decrease, adding 600 jobs. Total nonfarm employment is 144,400.

Local government was responsible for the majority of the gain with 900 more jobs. Trade, transportation and warehousing added 100 jobs. Leisure and hospitality shed 200 jobs with an expected seasonal reduction. Manufacturing pared 100 jobs, putting an end to four consecutive months of gains. Professional and business services also pared 100 jobs.

Over the year the area added 1,100 jobs with the largest gain in professional and business services (+600). Manufacturing and trade, transportation and warehousing employment have each gained 200 jobs from one year ago. Employment in the information sector has held steady for three consecutive months, but has trimmed 200 jobs from one year ago.

For additional information, contact Dennis Schwartz (515-281-5754)

Des Moines/West Des Moines - Nonfarm Employment



[CLICK TABLE FOR DATA](#)

| Des Moines MSA Employment | |
|--|---------|
| Total Nonfarm 15p | 372,300 |
| Total Nonfarm 14 | 361,000 |
| % Change 1 Yr | 3.13% |
| Noteworthy Expanding and Contracting Industries (1 yr) | |
| Prof & Business | 7.76% |
| Information | -5.97% |

p - preliminary data

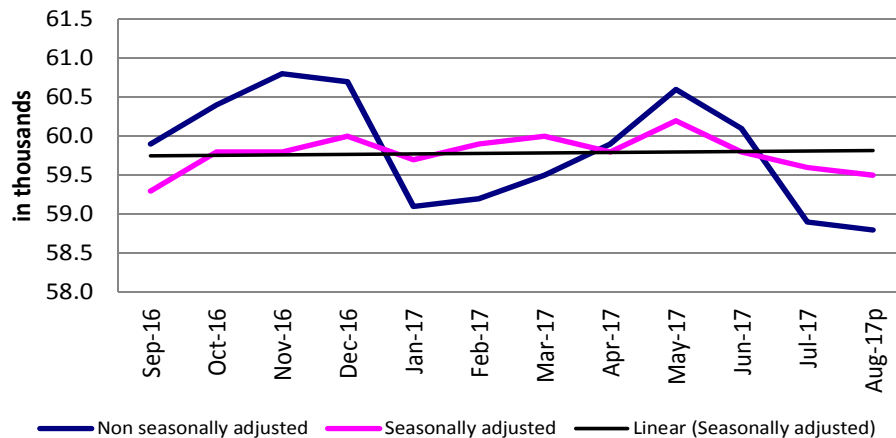
The Des Moines Metro area shed 300 jobs in August, lowering total nonfarm employment down to 372,300 jobs. Historically, August typically has some jobs added; however, this decline follows an unusually small seasonal drop last month and coupled with a historically large gain in June, so it could be a sign of shifting seasonal patterns this year. The Des Moines Metro area remains up 11,300 jobs annually (+3.1 percent), thus the monthly decline is not much cause for concern.

The largest monthly gain occurred in education and health services (+800). The majority of these gains were in health care and social assistance (+500). Professional and business services also bolstered payrolls this month (+600), as did government (+600). Trade and transportation saw some improvement in retail and added 500 jobs. Leisure and hospitality experienced a large loss this month (-1,600) due to early seasonal losses in recreational activities. Smaller losses were in construction (-500) and information services (-100).

Since last year, professional and business services have added the most jobs (+3,800) with most of the growth being in administrative support and waste management (+2,300). Leisure and hospitality industries have also been prosperous over the past twelve months even with this month's loss and are up 2,900 jobs versus last year. The only sector to pare jobs annually is information (-400).

For additional information, contact James Morris (515-281-8515)

Dubuque - Nonfarm Employment



[CLICK TABLE FOR DATA](#)

| Dubuque MSA Employment | |
|--|--------|
| Total Nonfarm 15p | 58,800 |
| Total Nonfarm 14 | 58,600 |
| % Change 1 Yr | -0.17% |
| Noteworthy Expanding and Contracting Industries (1 yr) | |
| Goods Producing | 2.54% |
| Local Government | -7.89% |

p - preliminary data

Total nonfarm employment in Dubuque dropped 100 jobs in August and now stands at 58,800 jobs. August typically doesn't see much movement in jobs, so this month's change is not surprising. The Dubuque area remains up 200 jobs versus one year ago.

Government added 300 jobs at the local level yet still trails last year's mark by 300 jobs. Both private services and goods-producing sectors shed employment this month (by 300 and 100 jobs, respectively); however, they remain up a combined 500 jobs versus last August.

For additional information, contact James Morris (515-281-8515)

[CLICK TABLE FOR DATA](#)

| Iowa City MSA Employment | |
|---|---------|
| Total Nonfarm 15p | 103,800 |
| Total Nonfarm 14 | 101,100 |
| % Change 1 Yr | 2.67% |
| Noteworthy Expanding and Contracting Industries | |
| State Government | 4.70% |
| Trade & Transport | -1.78% |

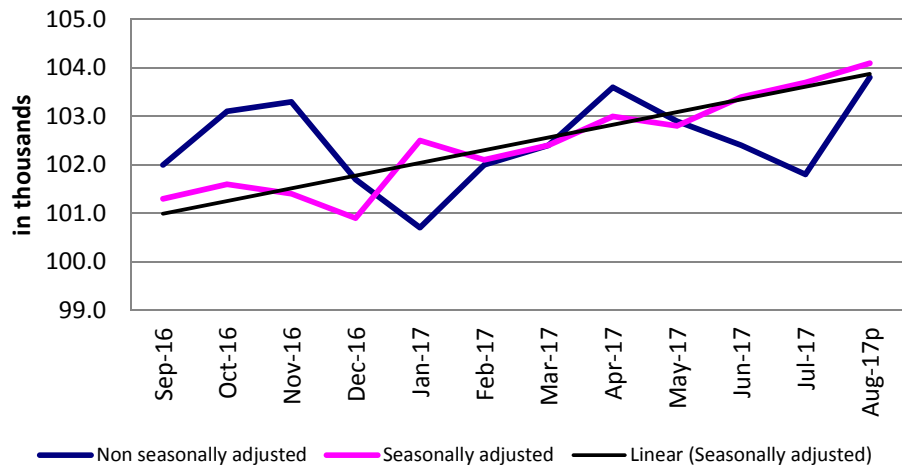
p - preliminary data

Nonfarm employment in the Iowa City metropolitan statistical area added 2,000 jobs from last month mostly due to a seasonal gain in state government employment (+1,800). Trade, transportation and warehousing added 400 jobs after two months of decline and leisure and hospitality and professional and business services each added 100 jobs. There are no sectors with a jobs decrease for the month.

The metro area has added 2,700 jobs from one year ago, boosted by gains of 1,600 in government and 1,100 in private service-providing sectors. Professional and business services added 300 jobs and leisure and hospitality gained 200 jobs. Trade, transportation and warehousing pared 300 jobs and goods producing industries are unchanged.

For additional information, contact Dennis Schwartz (515-281-5754)

Iowa City - Nonfarm Employment



[CLICK TABLE FOR DATA](#)

| Sioux City MSA Employment | |
|---|--------|
| Total Nonfarm 15p | 87,800 |
| Total Nonfarm 14 | 88,100 |
| % Change 1 Yr | -0.34% |
| Noteworthy Expanding and Contracting Industries | |
| Trade & Transport | 2.54% |
| Goods Producing | -1.38% |

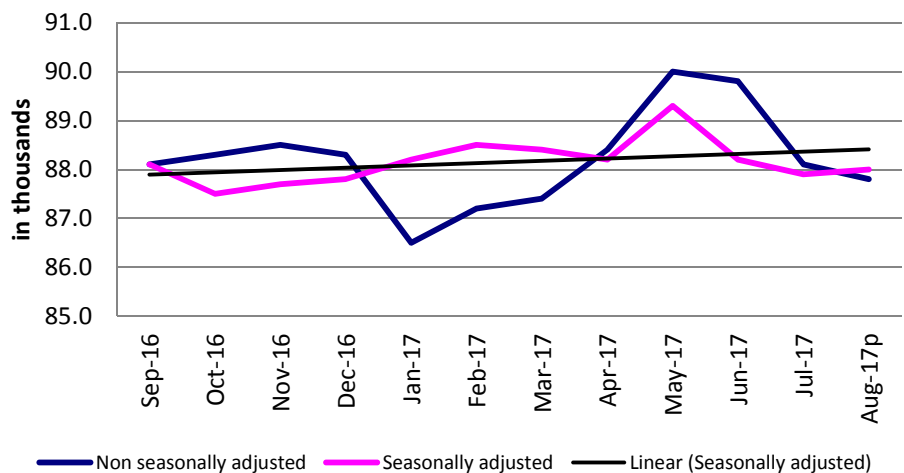
p - preliminary data

Employment in the Sioux City MSA is down 300 jobs from July. Contributing to the loss were losses in trade, transportation and warehousing (-100) and government (-100). Professional and business services is the only sector with a jobs gain, adding 100 jobs from last month. The sector has not fluctuated more than 300 jobs in the past year.

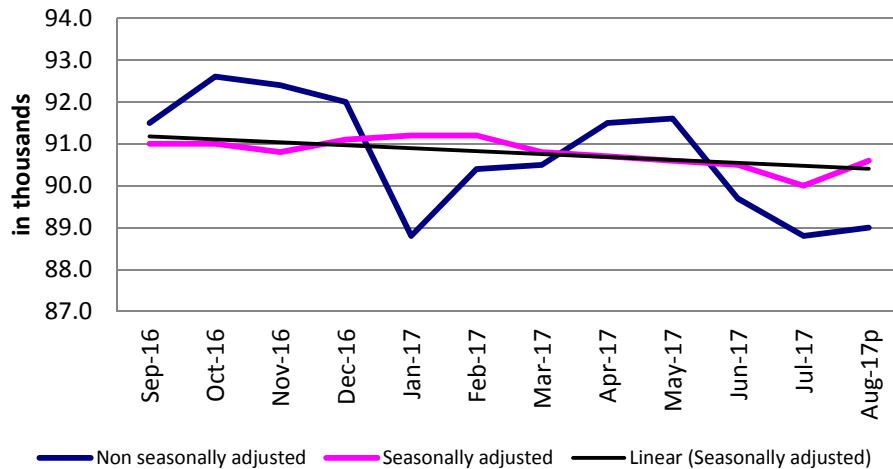
Overall, area employment is 300 below one year ago. Goods producing industries are responsible for the bulk of the loss having pared 300 jobs even after a gain of 300 in manufacturing. Trade, transportation and warehousing has added 500 jobs and professional and business services shed 100 jobs. Government employment is unchanged.

For additional information, contact Dennis Schwartz (515-281-5754)

Sioux City - Nonfarm Employment



Waterloo/Cedar Falls - Nonfarm Employment



[CLICK TABLE FOR DATA](#)

| Waterloo/Cedar Falls MSA Employment | |
|---|--------|
| Total Nonfarm 15p | 89,000 |
| Total Nonfarm 14 | 89,300 |
| % Change 1 Yr | -0.34% |
| Noteworthy Expanding and Contracting Industries | |
| Prof & Business Svcs | 5.33% |
| Retail Trade | -4.50% |

p - preliminary data

The Waterloo/Cedar Falls metropolitan statistical area's total nonfarm employment increased 200 jobs from the previous month and stands at 89,000. State government experienced a seasonal gain of 400 jobs while leisure and hospitality pared 100 jobs with an adjustment that is also seasonal in nature. Trade, transportation and warehousing also boosted employment with 300 additional jobs.

Over the year, employment is down 300 jobs. The loss is split among goods producing and service providing sectors. Manufacturing has pared 100 jobs and represents the entire loss in goods producing. Manufacturing has not had a jobs decrease since March of this year.

For additional information, contact Dennis Schwartz (515-281-5754)

LINKS TO ADDITIONAL INFORMATION

Click on a link below to visit web page

Worker Adjustment & Retraining Notification Act (WARN)

U.S. Bureau of Labor Statistics

Unemployment Insurance Benefit Payments

Consumer Price Index (CPI)

Unemployment Insurance Benefit Paid by County

Employment Statistics for Canada

Current Employment Statistics

Each month the **Current Employment Statistics** program surveys about 143,000 businesses and government agencies, representing approximately 588,000 individual worksites, in order to provide detailed industry data on employment, hours, and earnings of workers on nonfarm payrolls for all 50 States, the District of Columbia, Puerto Rico, the Virgin Islands, and about 450 metropolitan areas and divisions.

Contact Information

Iowa Workforce Development
Employment Statistics Bureau
1000 East Grand Avenue
Des Moines, IA 50319-0209
Tel: 515-281-8515
Tel: 800-532-9793
Fax: 515-281-8195
Email: trends@iowa.gov
www.iowaworkforce.org

Equal opportunity employer/program. Auxiliary aids and services are available upon request to individuals with disabilities. For deaf and hard of hearing, use Relay 711