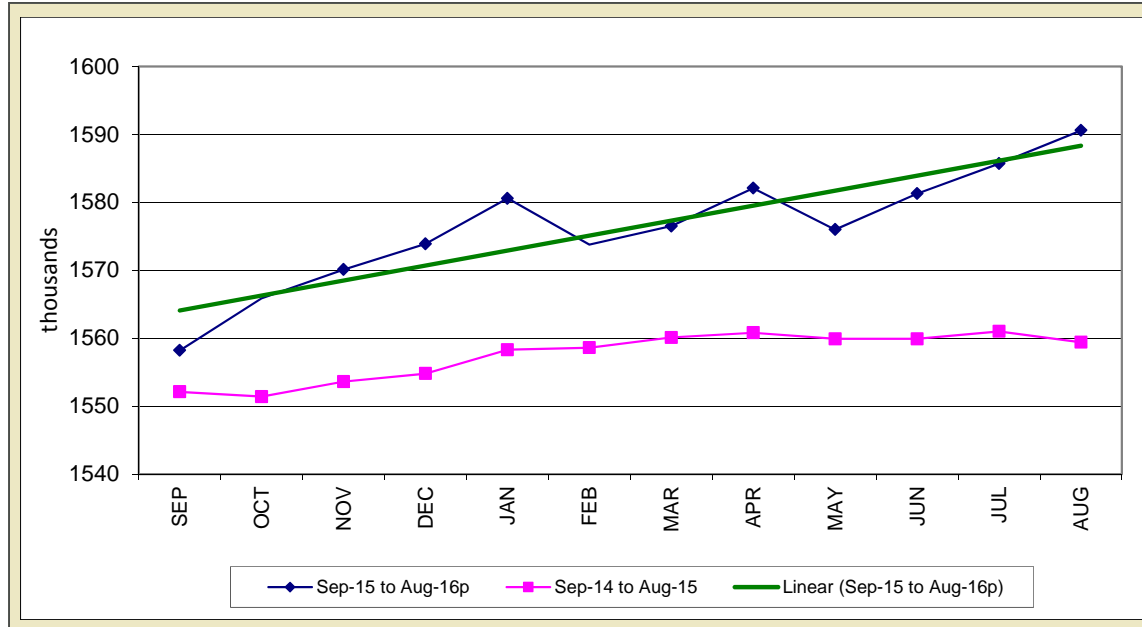


STATE OF IOWA NONFARM EMPLOYMENT WORKFORCE DEVELOPMENT

AUGUST 2016
LMR MONTHLY

JOB GAINS SPLIT AMONG GOODS PRODUCING AND SERVICE PROVIDING SECTORS



For the third consecutive month, Iowa businesses expanded their payrolls and added 4,900 jobs, raising the total to 1,590,600. Both goods-producing and service sectors gained jobs this month with private services adding the majority (2,900). Government added jobs at the local level and is 4,800 higher annually; however, this gain is partially due to seasonal staff being retained and brought back earlier than usual this year. Compared to last year, the state has added 31,200 jobs, a gain of 2.0 percent.

Leisure and hospitality added the most jobs in August (1,400), with the gains evenly split between arts and entertainment and accommodations and food services. Despite recent uncertainty within the economy, staffing patterns in these industries has been strong, a reassuring sign that consumers are still willing to part with disposable income on non-essentials. Elsewhere, trade and

transportation was bolstered by retail trade hiring and added 1,300 jobs. Retail in Iowa has not fared well recently, adding jobs in only three months in 2016. Other gains this month included financial activities, construction, manufacturing, and other services. Losses were small by comparison and were led by professional and business services (-600). Despite a sizable gain last month, this sector has pared jobs in three of the last four months. The only other losses were small declines in education and health services and information.

Annually, construction continues to expand over last year's level and is now up 14,400 jobs. Leisure and hospitality is a distant second with 5,800 jobs gained, then other services at 4,300. Manufacturing continues to lag due to durable goods layoffs (-5,000), and this stagnation may now be carrying over into professional and

business services—down 2,900 jobs versus one year ago.

Nationally, the U.S. expanded by 151,000 jobs in August. The monthly gain was less than the previous twelve month average, but does follow two unusually large gains in June and July. The largest gains were in education and health care and leisure and hospitality.

For additional information, contact James Morris (515-281-8515)

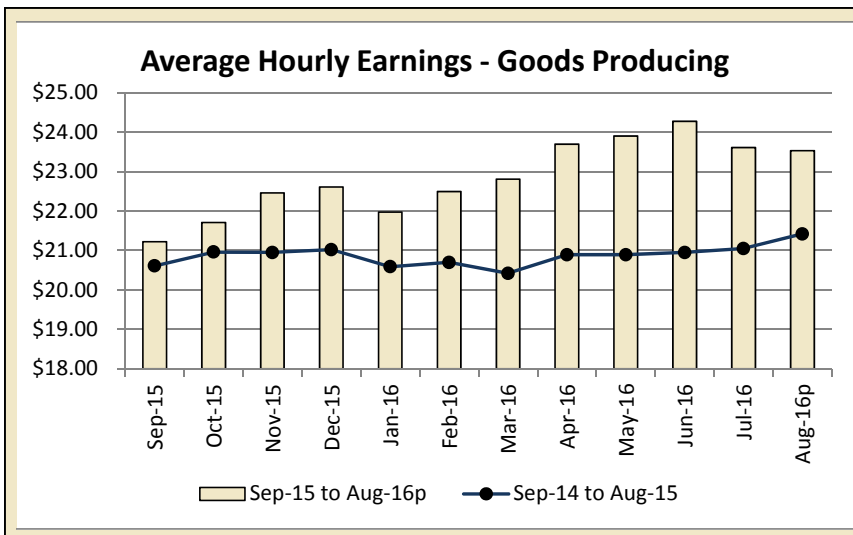
For additional information, contact James Morris (515-281-8515)

**METROPOLITAN STATISTICAL AREA
SEASONALLY ADJUSTED NONFARM EMPLOYMENT (TOTAL NONFARM)**

MSA	Aug-15	Sep-15	Oct-15	Nov-15	Dec-15	Jan-16	Feb-16	Mar-16	Apr-16	May-16	Jun-16	Jul-16	Aug-16p
AMES	52.6	52.8	52.8	52.8	52.8	53.1	53.2	52.7	53.6	53.4	53.5	53.5	53.1
CEDAR RAPIDS	144.0	143.1	142.7	143.0	143.1	144.9	144.0	144.5	144.1	143.4	145.0	144.2	144.6
DES MOINES/W. DES MOINES	350.1	349.2	349.2	349.8	350.0	352.0	349.6	349.0	352.1	354.8	357.0	356.5	358.9
DUBUQUE	59.8	60.1	60.2	60.1	60.3	60.5	60.3	60.6	60.4	60.6	61.1	60.6	60.7
IOWA CITY	98.6	98.4	98.9	98.9	99.2	99.1	99.4	99.6	99.9	98.6	100.9	101.5	100.6
SIOUX CITY *													
WATERLOO/CEDAR FALLS	91.1	90.7	90.5	90.6	90.7	91.4	90.7	90.7	90.9	90.4	90.6	90.1	90.2

* Seasonally adjusted data for the Sioux City MSA is not available due to redefinition of the metropolitan area to now include Plymouth County

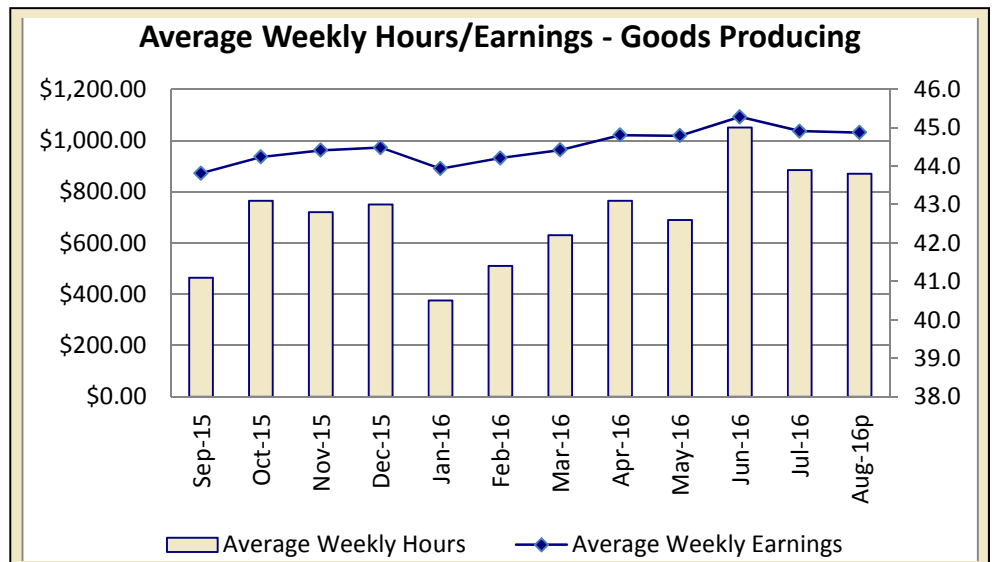
IOWA'S HOURS & EARNINGS



Goods-producing Hours & Earnings	
Average Weekly Earnings	\$1,030.61
Average Hourly Earnings	\$23.53
Average Weekly Hours	43.8

Production workers in Iowa's goods-producing sectors averaged \$1,030.61 a week in August, down \$5.87 from July and \$107.41 more than one year ago. The annual gain mostly stems from an increase in overtime hours worked for construction employees. The average weekly wage for individuals in construction is up over two-hundred dollars annual, whereas manufacturing workers have experienced a reduction in the schedules and weekly earnings.

Within services sectors, retail trade production workers averaged \$353.98 in August, down \$16.23 versus last August with both hourly earnings and weekly schedules being reduced slightly. Finance production workers averaged \$890.03 in August, little changed compared to last year's level.

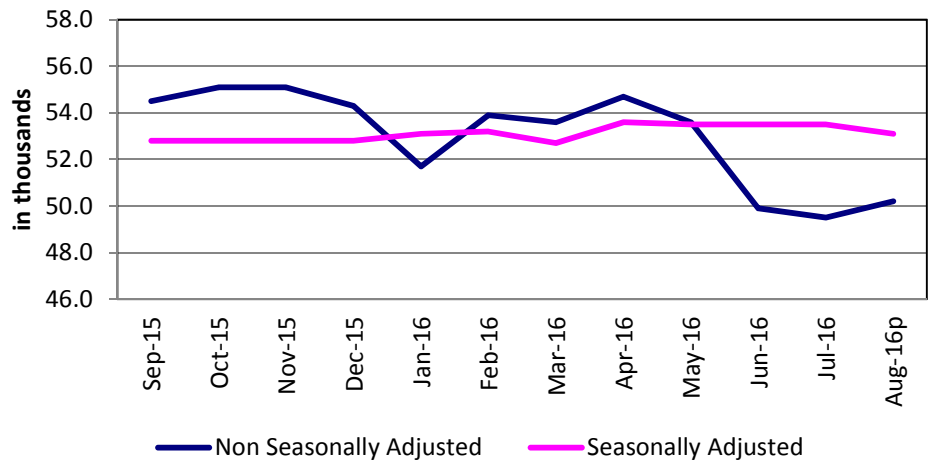


[CLICK TABLE FOR DATA](#)

Ames MSA Employment	
Total Nonfarm 15 ^p	50,200
Total Nonfarm 14	49,600
% Change 1 Yr	1.21%
Noteworthy Expanding and Contracting Industries (1 yr)	
Pvt Service Provide	1.63%
Local Government	0.00%

p - preliminary data

Ames - Nonfarm Employment



The Ames Metro area added 700 jobs in August and now stands at 50,200 jobs. This month's increase was seasonal and expected due to state government education resuming classes this month. This month's gain, however, was partially offset by losses in private services (-200) and goods-producing industries (-100).

Compared to last year, the Ames area is up 600 jobs. The growth has been fueled by private services (400), although incremental gains of 100 jobs each were seen in both goods-producing industries and government.

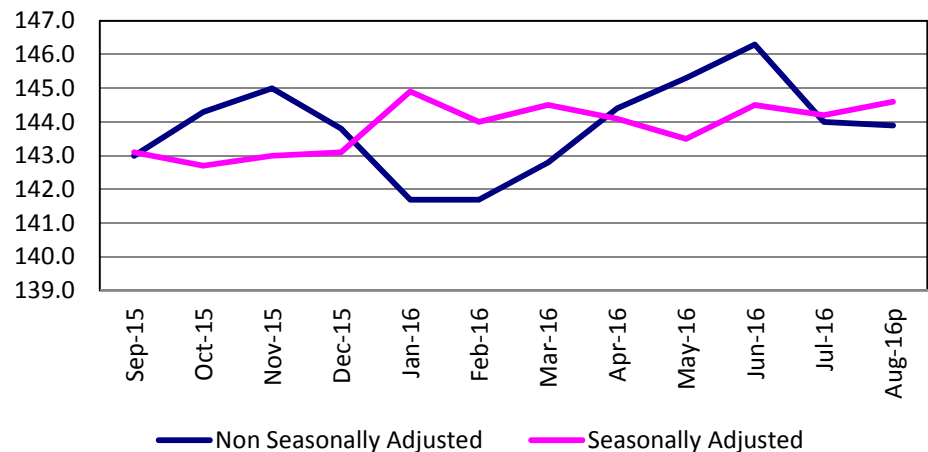
For additional information, contact James Morris (515-281-8515)

[CLICK TABLE FOR DATA](#)

Cedar Rapids MSA Employment	
Total Nonfarm 15 ^p	143,900
Total Nonfarm 14	142,800
% Change 1 Yr	0.77%
Noteworthy Expanding and Contracting Industries (1 yr)	
Prof & Bus Services	5.88%
Information	-4.55%

p - preliminary data

Cedar Rapids - Nonfarm Employment



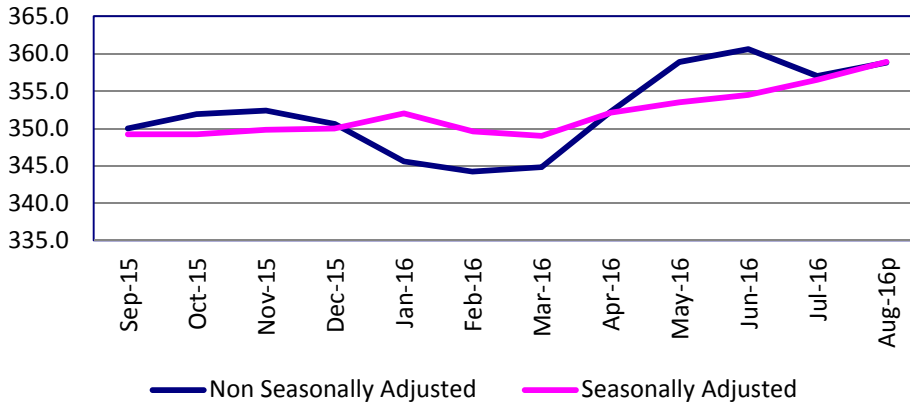
The Cedar Rapids metropolitan statistical area shed 100 nonfarm jobs from July, and now stands at 143,900. Total nonfarm employment in the metro area remains 1,100 above one year ago.

Financial activities enjoyed the only over-the-month employment gain, adding just 100 jobs. Trade, transportation and warehousing and leisure and hospitality each shed 100 jobs. Both industries typically see minimal jobs losses from July to August and both industries experienced an annual jobs gain from last year.

Government and information are the only two sectors with over-the-year employment losses, paring 700 and 200 jobs, respectively. Professional and business services led all sectors with a gain of 800 jobs, accompanied by several smaller gains of 300 or less.

For additional information, contact Dennis Schwartz (515-281-5754)

**Des Moines/West Des Moines -
Nonfarm Employment**



[CLICK TABLE FOR DATA](#)

Des Moines MSA Employment	
Total Nonfarm 15p	358,800
Total Nonfarm 14	352,700
% Change 1 Yr	1.73%
Noteworthy Expanding and Contracting Industries (1 yr)	
Mining & Construct	6.95%
State Government	-6.41%

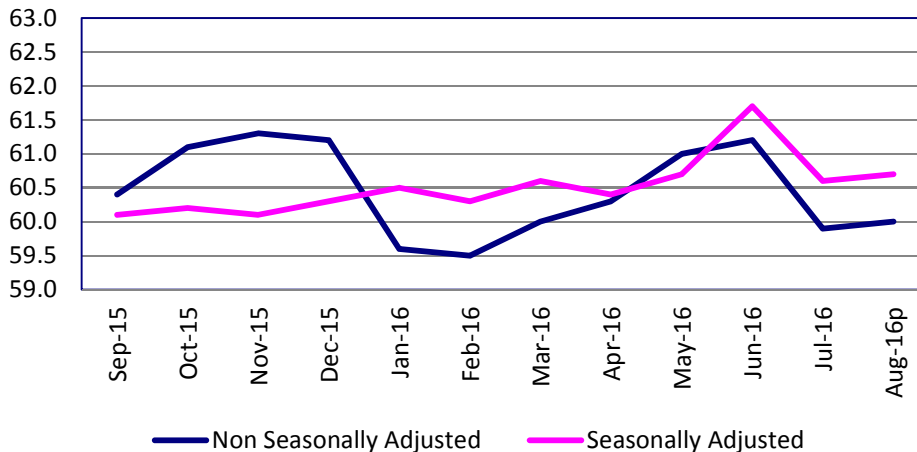
p - preliminary data

The Des Moines metro area gained a slight 1,800 jobs in August and now stands at 358,800 jobs. This month's gain is averaged compared with the prior ten years and is the combination of both seasonal gains in government and expansion in private services. Government alone added 800 jobs at the local level and was expected. Professional and business services led all private sectors with 1,000 jobs added primarily at the professional, scientific, and technical industry. Smaller gains this month included financial activities, trade and transportation, and manufacturing. Losses were limited to just two sectors, but were unusually heavy in leisure and hospitality (-700). Some of this decline was the result of seasonal parings of temporary summer jobs. The only other loss this month was a minor drop of 100 jobs in education and health services.

Annually, nonfarm employment is up 6,100 jobs (1.7 percent). Financial activities has added the most jobs during that span (3,300) followed by trade and transportation (1,500). Both construction and professional and business services are up 1,300 jobs. Alternatively, losses have been led by government (-2,100), although much of this decline is due to local government education employment not yet returning from summer break. The only other yearly losses were in manufacturing and information services.

For additional information, contact James Morris (515-281-8515)

Dubuque - Nonfarm Employment



[CLICK TABLE FOR DATA](#)

Dubuque MSA Employment	
Total Nonfarm 15p	60,000
Total Nonfarm 14	58,900
% Change 1 Yr	0.17%
Noteworthy Expanding and Contracting Industries (1 yr)	
Pvt Service Provide	2.82%
Goods Producing	-0.82%

p - preliminary data

The Dubuque Metro added a slight 100 jobs in August, raising total nonfarm employment to 60,000 jobs. August is not a seasonal month, so employment doesn't typically change much this time of year; however, there a gain of 300 jobs in government which was partially offset by declines of 100 jobs in goods-producing and private service industries.

Annually, the Dubuque area is up 1,100 jobs. All of the growth stems from private services industries (1,200). Goods-producing firms are down a slight 100 jobs and government is unchanged versus one year ago.

For additional information, contact James Morris (515-281-8515)

[CLICK TABLE FOR DATA](#)

Iowa City MSA Employment	
Total Nonfarm 15 ^p	100,000
Total Nonfarm 14	98,300
% Change 1 Yr	1.73%
Noteworthy Expanding and Contracting Industries	
Leisure & Hospitality	3.96%
Retail Trade	-0.96%

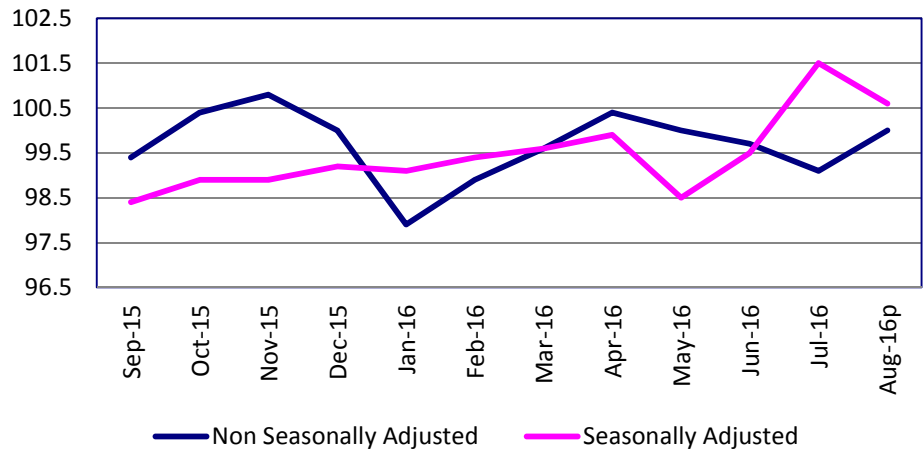
p - preliminary data

Nonfarm employment in the Iowa City metropolitan statistical area gained 900 jobs from last month. Government enjoyed the greatest gain, adding 1,000 jobs, all in state government. Leisure and hospitality added 100 jobs. Trade, transportation and warehousing shed 200 jobs.

The metro area has added 1,700 jobs from one year ago with gains in nearly every sector. The only exceptions are trade, transportation and warehousing (-100) and goods producing which is unchanged.

For additional information, contact Dennis Schwartz (515-281-5754)

Iowa City - Nonfarm Employment



[CLICK TABLE FOR DATA](#)

Sioux City MSA Employment	
Total Nonfarm 15 ^p	88,300
Total Nonfarm 14	88,100
% Change 1 Yr	0.23%
Noteworthy Expanding and Contracting Industries	
Leisure & Hospitality	5.75%
Prof & Business	-2.50%

p - preliminary data

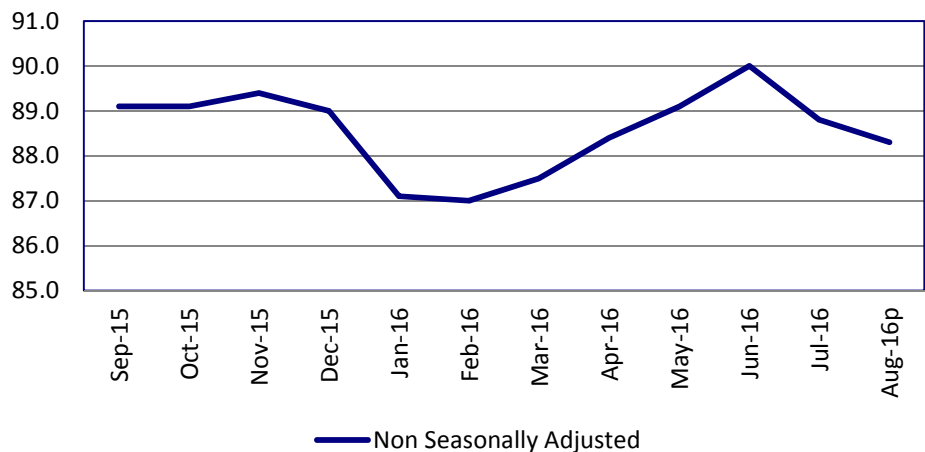
The Sioux City MSA has been redefined. It now includes: Dixon and Dakota Counties in Nebraska, Union County in South Dakota, and Woodbury and Plymouth Counties in Iowa.

Employment in the Sioux City MSA trimmed 500 jobs from July. Goods producing shed 200 jobs, although manufacturing was unchanged as a whole. Professional and business services and government each pared 100 jobs. Leisure and hospitality is the only sector with a jobs gain this month, adding 100 jobs.

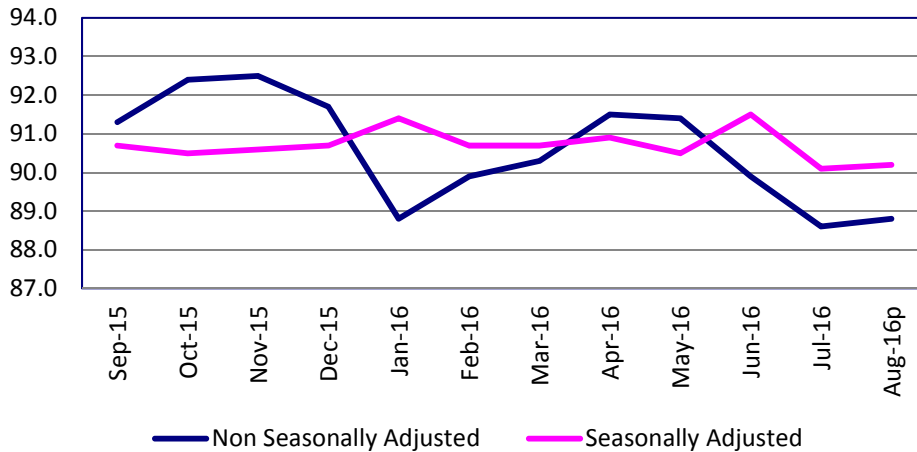
Overall, the area has added 200 jobs from one year ago. Trade, transportation and warehousing and leisure and hospitality were responsible for the gain, each adding 500 jobs. Manufacturing has pared 300 jobs from one year ago and is joined by professional and business services and government, both down 200 jobs.

For additional information, contact Dennis Schwartz (515-281-5754)

Sioux City - Nonfarm Employment



Waterloo/Cedar Falls - Nonfarm Employment



[CLICK TABLE FOR DATA](#)

Waterloo/Cedar Falls MSA Employment	
Total Nonfarm 15p	88,800
Total Nonfarm 14	89,500
% Change 1 Yr	-0.78%
Noteworthy Expanding and Contracting Industries	
Leisure & Hospitality	2.41%
Manufacturing	-4.97%

p - preliminary data

The Waterloo/Cedar Falls metropolitan statistical area's total nonfarm employment is up 200 jobs from the previous month and stands at 88,800. With the exception of a decline of 300 jobs in government, jobs gains and losses were minimal. Manufacturing shed 200 jobs and trade, transportation and warehousing pared 100 jobs. Financial activities and leisure and hospitality each added 100 jobs.

Over the year, employment is down 700 jobs, with manufacturing experiencing the greatest loss (-800). Other sectors paring jobs include; trade, transportation and warehousing (-300), and government (-200). Leisure and hospitality is the only sector with a jobs gain from one year ago, with 200 additional jobs.

For additional information, contact Dennis Schwartz (515-281-5754)

LINKS TO ADDITIONAL INFORMATION

Click on a link below to visit web page

Worker Adjustment & Retraining Notification Act (WARN)

U.S. Bureau of Labor Statistics

Unemployment Insurance Benefit Payments

Consumer Price Index (CPI)

Unemployment Insurance Benefit Paid by County

Employment Statistics for Canada

Current Employment Statistics

Each month the **Current Employment Statistics** program surveys about 143,000 businesses and government agencies, representing approximately 588,000 individual worksites, in order to provide detailed industry data on employment, hours, and earnings of workers on nonfarm payrolls for all 50 States, the District of Columbia, Puerto Rico, the Virgin Islands, and about 450 metropolitan areas and divisions.

Contact Information

Iowa Workforce Development
Employment Statistics Bureau
1000 East Grand Avenue
Des Moines, IA 50319-0209
Tel: 515-281-8515
Tel: 800-532-9793
Fax: 515-281-8195
Email: trends@iowa.gov
www.iowaworkforce.org

Equal opportunity employer/program. Auxiliary aids and services are available upon request to individuals with disabilities. For deaf and hard of hearing, use Relay 711