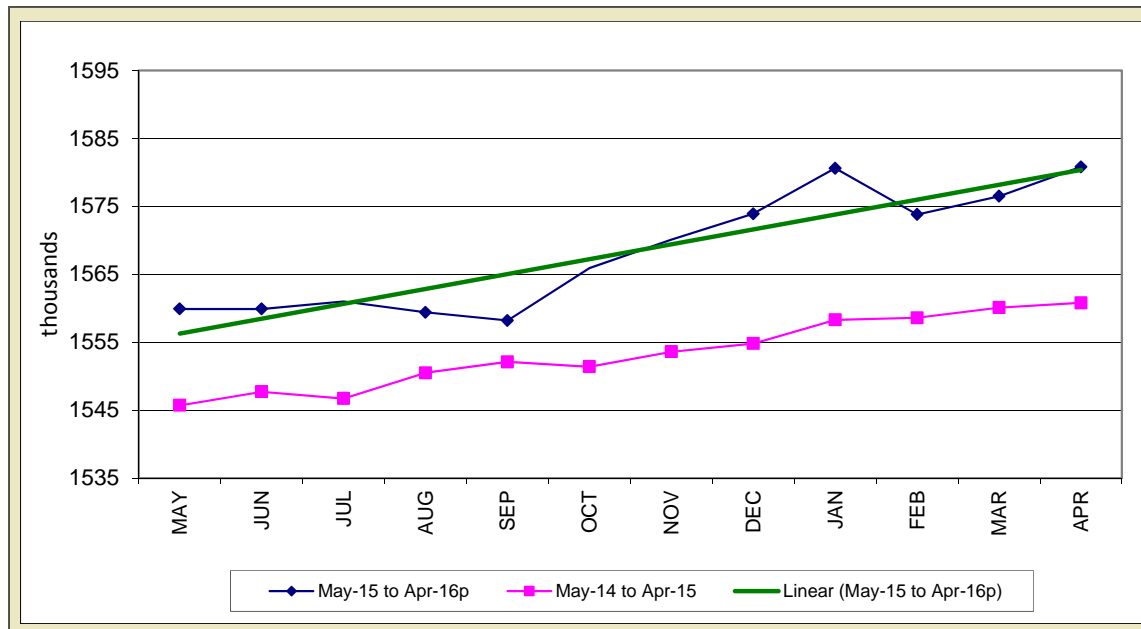


STATE OF IOWA NONFARM EMPLOYMENT WORKFORCE DEVELOPMENT

APRIL 2016
LMR MONTHLY

NONFARM EMPLOYMENT LEVEL ENDS YEAR WITH SMALL GAIN



In April, Iowa's nonfarm employment advanced by 4,300 jobs, lifting employment to 1,580,800 jobs. The monthly gain is the second consecutive for the state following an unusually large paring in February. Despite increasing concern over an economic downturn, Iowa businesses continue to hire and the state has added jobs in six of the last seven months leading to an increase of 20,000 jobs versus one year ago. Private sector firms increased marginally this month (+2,400). Government added jobs primarily at the local government level (+2,100) and is up 2,000 jobs annually.

Construction added the most jobs this month (+3,300). This increase follows another large increase in March and is not unexpected given the large quantity of institutional and infrastructure projects taking place around the state. The financial sector rebounded from a slight loss last

month and added 1,600 jobs. This sector has steadily advanced throughout 2015 and carrying over into 2016. Other sectors adding jobs this month include manufacturing (+1,000), education and health care (+900), and professional and business services (+500). Alternatively, losses were concentrated in trade and transportation (-3,500). Declines were nearly split between both wholesale and retail trade payrolls in April. All other losses were minor this month and included leisure and hospitality (-600) and other services (-600).

Annually, construction continues to hire and has accounted for slightly over half of all job gains in Iowa (+10,600). The state's continued expansion in construction provides at least some indication of continued optimism firms hold regarding the economic future. Education and health care is second in terms of growth (+5,100) followed by financial

activities (+3,800). Losses have been sparse with the exception of manufacturing (-4,200), information (-1,800), and professional and business services (-900).

Nationally, nonfarm employment advanced by a modest 160,000 jobs in April. This monthly gain is certainly less than the previous twelve month average of 232,000. Two bright spots this month were professional and business services (+65,000) and health care (+44,000).

For additional information, contact James Morris (515-281-8515)

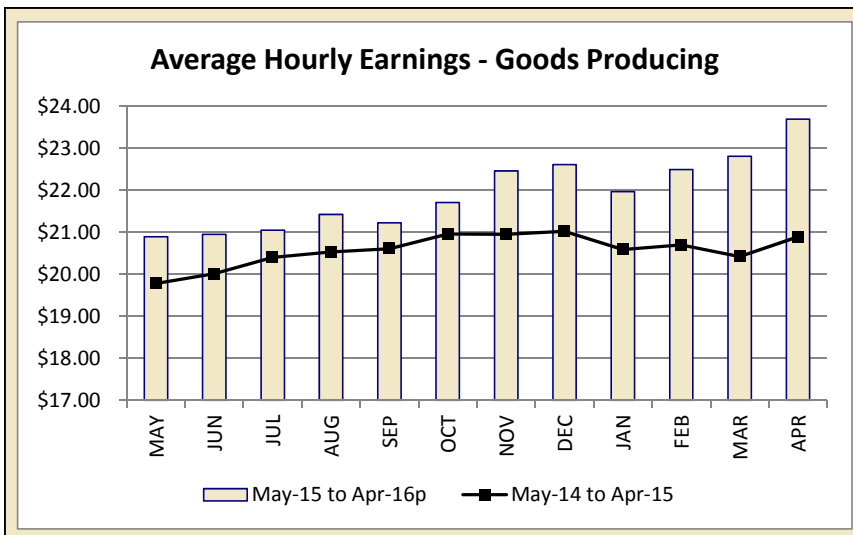
For additional information, contact James Morris (515-281-8515)

**METROPOLITAN STATISTICAL AREA
SEASONALLY ADJUSTED NONFARM EMPLOYMENT (TOTAL NONFARM)**

MSA	Apr-15	May-15	Jun-15	Jul-15	Aug-15	Sep-15	Oct-15	Nov-15	Dec-15	Jan-16	Feb-16	Mar-16	Apr-16p
AMES	52.7	52.7	52.1	52.1	52.6	52.8	52.8	52.8	52.8	53.1	53.2	52.7	53.7
CEDAR RAPIDS	142.8	143.1	143.2	143.5	144.0	143.1	142.7	143.0	143.1	144.9	144.0	144.5	143.9
DES MOINES/W. DES MOINES	347.2	348.5	349.3	350.6	350.1	349.2	349.2	349.8	350.0	352.0	349.6	349.0	350.9
DUBUQUE	59.7	59.8	59.5	59.8	59.8	60.1	60.2	60.1	60.3	60.5	60.3	60.6	60.2
IOWA CITY	98.6	98.2	98.4	98.6	98.6	98.4	98.9	98.9	99.2	99.1	99.4	99.6	99.5
SIOUX CITY *													
WATERLOO/CEDAR FALLS	91.3	91.1	91.1	91.1	91.1	90.7	90.5	90.6	90.7	91.4	90.7	90.7	91.0

* Seasonally adjusted data for the Sioux City MSA is not available due to redefinition of the metropolitan area to now include Plymouth County

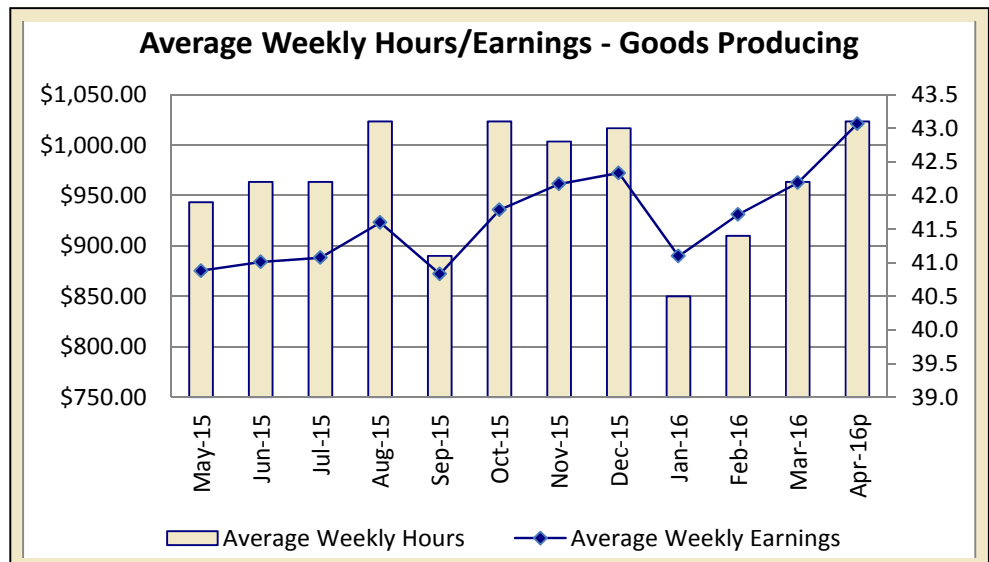
IOWA'S HOURS & EARNINGS



Goods-producing Hours & Earnings	
Average Weekly Earnings	\$1,021.04
Average Hourly Earnings	\$23.69
Average Weekly Hours	43.1

Production workers in Iowa's goods-producing sectors averaged \$1,021.04 in April, up \$58.46 compared to last month and \$141.57 more than one year ago. Much of the increase could be attributable to the gain in overtime hours for construction workers this month, although there was also some increase in manufacturing in both durable and nondurable goods shops as well.

Among service sectors, retail workers gained \$8.11 this month raising wages to \$361.19 in April, \$24.04 more than one year ago. Finance production workers experienced a slight dip in wages this month (-\$9.26) and averaged \$916.03 in weekly earnings. Despite the loss, those production workers in financial activities remain up \$31.36 versus last April.



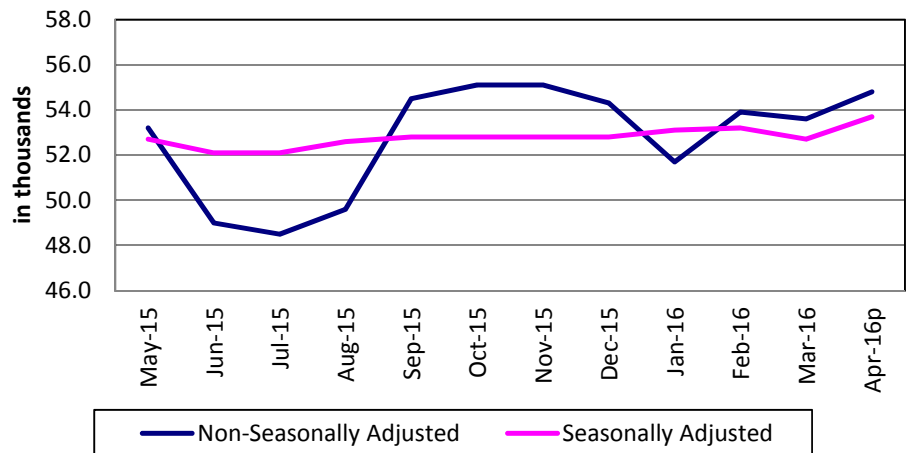
METROPOLITAN STATISTICAL AREAS

[CLICK TABLE FOR DATA](#)

Ames MSA Employment	
Total Nonfarm 15 ^p	54,800
Total Nonfarm 14	54,000
% Change 1 Yr	1.48%
Noteworthy Expanding and Contracting Industries (1 yr)	
Pvt Service Provide	2.87%
Goods Producing	-5.63%

p - preliminary data

Ames - Nonfarm Employment



The Ames Metro area added 1,200 jobs in April and is now up to 54,800 jobs. This month's gain is somewhat large and due to expansion most segments of the economy. Private services added 400 jobs and goods producing industries gained 200 jobs. Government gained 600 primarily at the state level.

Annually, Ames is up 800 jobs. Private services have more than offset a decline of 400 jobs in goods producing industries. Government is up 500 jobs due to expansion in state government education.

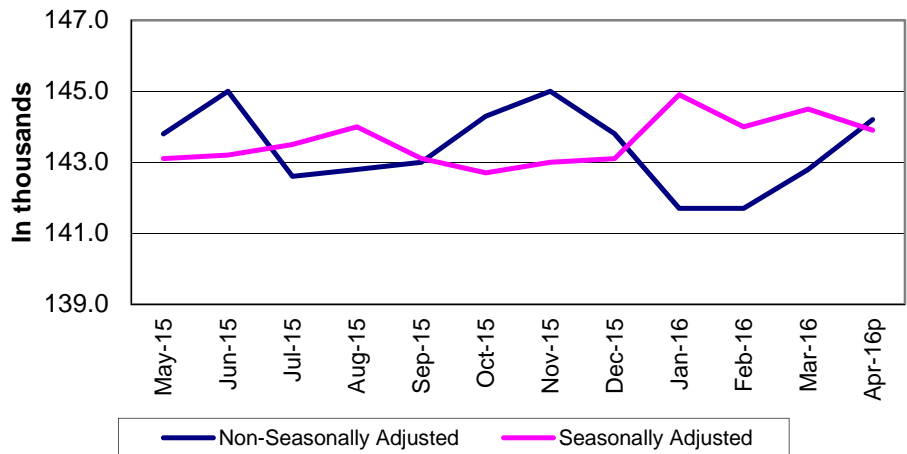
For additional information, contact James Morris (515-281-8515)

[CLICK TABLE FOR DATA](#)

Cedar Rapids MSA Employment	
Total Nonfarm 15 ^p	144,200
Total Nonfarm 14	142,900
% Change 1 Yr	0.91%
Noteworthy Expanding and Contracting Industries (1 yr)	
Other Services	1.89%
Information	-8.70%

p - preliminary data

Cedar Rapids - Nonfarm Employment



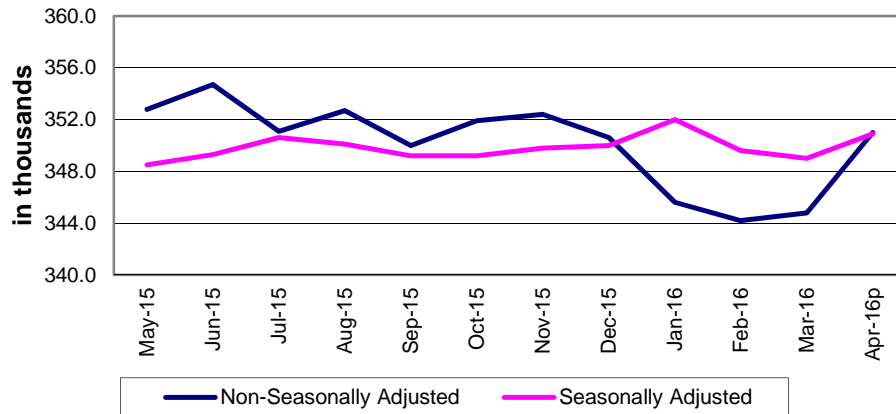
The Cedar Rapids metropolitan statistical area added 1,400 nonfarm jobs from March, bringing employment to 144,200. Total nonfarm employment in the metro area is 1,300 above one year ago.

Natural resources and construction led all sectors, adding 600 jobs (8.45%) from the previous month. Leisure and hospitality added 500 jobs with the third consecutive jobs gain. Professional and business services added 400 jobs and is now at its highest since November 2014. Trade, transportation and warehousing and government each pared 100 jobs.

Over the year, natural resources and constructions lags behind the April 2015 level (-300). Information, which has not seen an over-the-year increase since September 2013, shed 400 jobs from April 2015. On a more positive note, trade, transportation and warehousing has added 600 jobs (5.45%) from one year ago and educational and health services has added 300 jobs (1.49%). Manufacturing has added 200 jobs (1.00%).

For additional information, contact Dennis Schwartz (515-281-5754)

Des Moines/West Des Moines - Nonfarm Employment



[CLICK TABLE FOR DATA](#)

Des Moines MSA Employment	
Total Nonfarm 15p	351,000
Total Nonfarm 14	346,200
% Change 1 Yr	1.39%
Noteworthy Expanding and Contracting Industries (1 yr)	
Financial Activities	4.87%
State Government	-6.33%

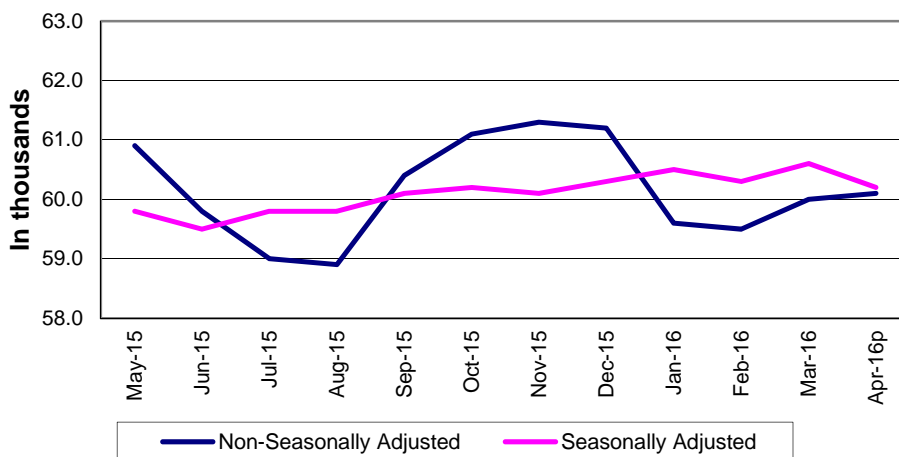
p - preliminary data

In April, the Des Moines metro area experienced a seasonal increase of 6,200 jobs (+1.8 percent). This month's gain is somewhat large historically, but it also follows relatively weak hiring in February and March. Construction understandably added the most jobs this month (+2,000) and is now up 400 versus last year. Leisure and hospitality also seasonally increased in April (+1,500), as did professional and business services (+1,200). Financial activities advanced this month (+600) as this sector continues to trend upward in Iowa. Virtually all sectors gained employment in April with the exception being trade and transportation (-100).

Annually, Des Moines is up 4,800 jobs. Not surprisingly, financial activities has lead the increase (+2,600), followed by education and health care (+1,100) then professional and business services (+1,000). Those sectors trailing last year's level are limited to government (-400), leisure and hospitality (-400), and information (-200).

For additional information, contact James Morris (515-281-8515)

Dubuque - Nonfarm Employment



[CLICK TABLE FOR DATA](#)

Dubuque MSA Employment	
Total Nonfarm 15p	60,100
Total Nonfarm 14	60,100
% Change 1 Yr	0.17%
Noteworthy Expanding and Contracting Industries (1 yr)	
Pvt Service Provide	0.69%
Trade & Transport	-3.23%

p - preliminary data

The Dubuque Metro added a slight 100 jobs in April and now rests at 60,100 jobs. This month's increase is somewhat low and partially the result of lower-than-expected seasonal hiring in private services (-200). Goods producing industries were bolstered by seasonal gains in construction and added 400 jobs. Government pared a slight 100 jobs.

Annually, nonfarm employment remains unchanged as gains of 300 in private services have been exactly offset by declines in goods producing services. Government remains unmoved versus one year ago.

For additional information, contact James Morris (515-281-8515)

[CLICK TABLE FOR DATA](#)

Iowa City MSA Employment	
Total Nonfarm 15p	100,000
Total Nonfarm 14	99,300
% Change 1 Yr	0.70%
Noteworthy Expanding and Contracting Industries	
Retail Trade	4.00%
Goods-producing	-2.00%

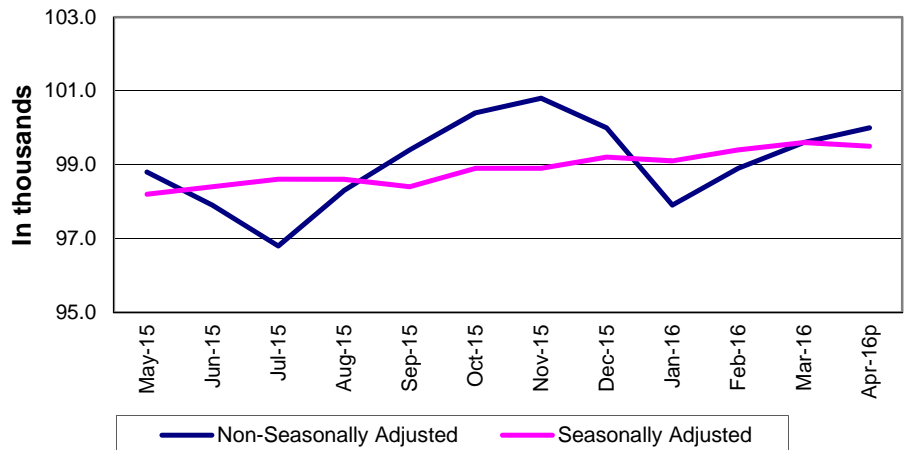
p - preliminary data

Nonfarm employment in the Iowa City metropolitan statistical area is up 400 jobs from last month, boosted by gains of 300 jobs in leisure and hospitality and 200 jobs in professional and business services.

The metro area has added 700 jobs from one year ago with gains in government and trade, transportation and warehousing. Goods-producing sectors shed 200 jobs and professional and business services pared 100 jobs.

For additional information, contact Dennis Schwartz (515-281-5754)

Iowa City - Nonfarm Employment



[CLICK TABLE FOR DATA](#)

Sioux City MSA Employment	
Total Nonfarm 15p	88,200
Total Nonfarm 14	87,300
% Change 1 Yr	1.03%
Noteworthy Expanding and Contracting Industries	
Trade & Transport	3.11%
Manufacturing	-0.66%

p - preliminary data

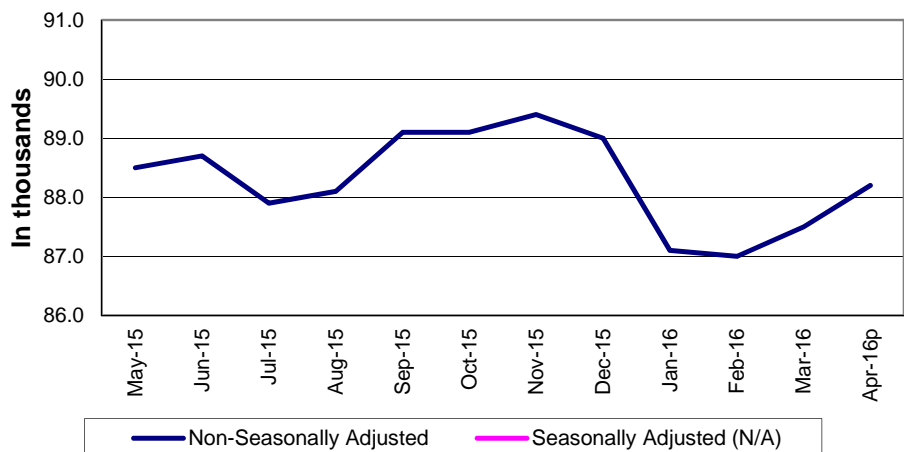
The Sioux City MSA has been redefined. It now includes: Dixon and Dakota Counties in Nebraska, Union County in South Dakota, and Woodbury and Plymouth Counties in Iowa.

Employment in the Sioux City MSA added 700 jobs from March, driven by additions in trade, transportation and warehousing (+400), leisure and hospitality (+300) and professional and business services (+200). Government experienced a smaller gain. Manufacturing was the only industry with a jobs loss (-100) for the month.

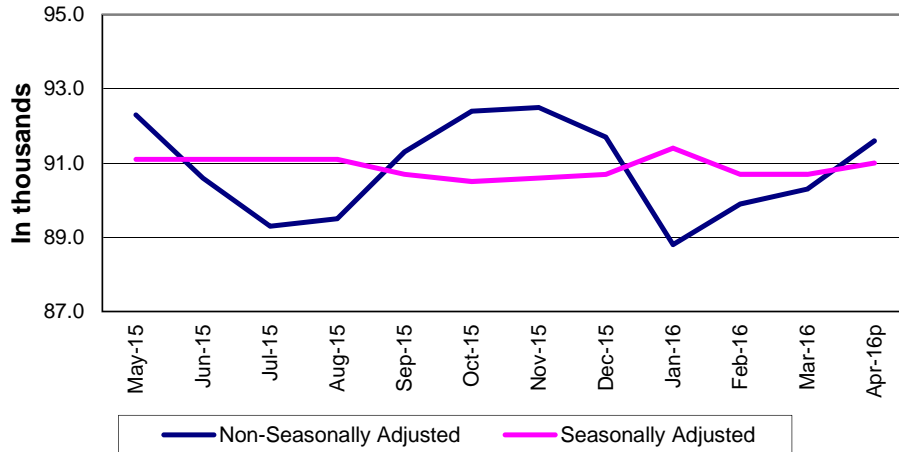
Overall, the area has added 900 jobs from one year ago. Manufacturing is down 100 jobs, while trade, transportation and warehousing, leisure and hospitality and government each added jobs.

For additional information, contact Dennis Schwartz (515-281-5754)

Sioux City - Nonfarm Employment



Waterloo/Cedar Falls - Nonfarm Employment



[CLICK TABLE FOR DATA](#)

Waterloo/Cedar Falls MSA Employment	
Total Nonfarm 15p	91,600
Total Nonfarm 14	92,000
% Change 1 Yr	-0.43%
Noteworthy Expanding and Contracting Industries	
Health Care & Soc	0.83%
Retail Trade	-2.78%

p - preliminary data

The Waterloo/Cedar Falls metropolitan statistical area's total nonfarm employment added 1,300 jobs from the previous month and stands at 91,600. Job gains were distributed across many sectors with the largest gains in leisure and hospitality (+300) and trade, transportation and warehousing (+200). Professional and business services, financial activities and government each added 100 jobs. Manufacturing was unchanged, although goods-producing industries, overall, added 700 jobs.

Over the year, employment is down 400 jobs, with government experiencing the greatest loss, shedding 200 jobs. Educational and health services is the only sector with a gain in the number of jobs from one year ago, adding 100 jobs.

For additional information, contact Dennis Schwartz (515-281-5754)

LINKS TO ADDITIONAL INFORMATION

Click on a link below to visit web page

Worker Adjustment & Retraining Notification Act (WARN)

U.S. Bureau of Labor Statistics

Unemployment Insurance Benefit Payments

Consumer Price Index (CPI)

Unemployment Insurance Benefit Paid by County

Employment Statistics for Canada

Current Employment Statistics

Each month the **Current Employment Statistics** program surveys about 143,000 businesses and government agencies, representing approximately 588,000 individual worksites, in order to provide detailed industry data on employment, hours, and earnings of workers on nonfarm payrolls for all 50 States, the District of Columbia, Puerto Rico, the Virgin Islands, and about 450 metropolitan areas and divisions.

Contact Information

Iowa Workforce Development
Employment Statistics Bureau
1000 East Grand Avenue
Des Moines, IA 50319-0209
Tel: 515-281-8515
Tel: 800-532-9793
Fax: 515-281-8195
Email: trends@iowa.gov
www.iowaworkforce.org

Equal opportunity employer/program. Auxiliary aids and services are available upon request to individuals with disabilities. For deaf and hard of hearing, use Relay 711