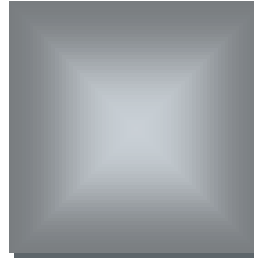


2016 IOWA INDUSTRY PROFILE

MINING

IOWA WORKFORCE DEVELOPMENT

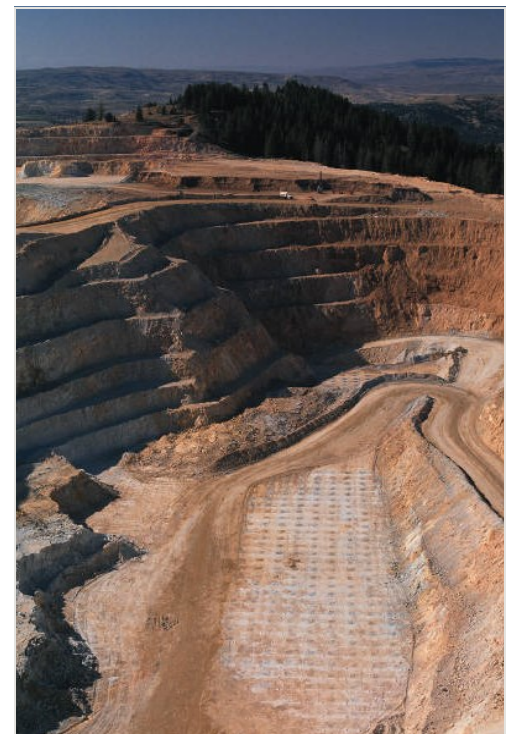


Executive Summary

In 2015, the **mining** sector comprised about 0.15 percent of all public and private employment in Iowa. While this sector only employed an average of 2,220 employees in 2015, workers in the industry are well-compensated: at \$54,362, their average wage was 23.2 percent higher than the average for all sectors in the state. Employment in this small sector does not fluctuate much and tends to hover around 2,200 employees.

97.4 percent of the employment in the sector is in the **stone mining and quarrying** subsector. This industry consists of establishments primarily engaged in developing the mine site and/or mining or quarrying dimension stone (i.e., rough blocks and/or slabs of stone). The remaining 2.6 percent of employment in the sector belong to the **supporting activities for mining** subsector. This industry consists of establishments primarily engaged in exploring, taking core samples and making geological observations at prospective mining sites. Iowa had zero employment in the **oil and gas extraction** subsector in 2015.

Mining in Iowa is also a male-dominated industry, as men held 89.0 percent of jobs in this sector.





MINING

IOWA INDUSTRY PROFILE

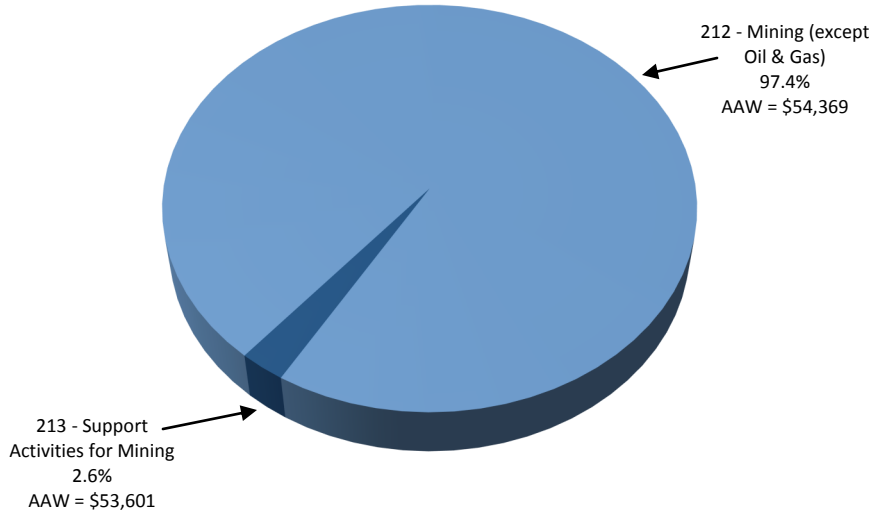
What is Mining?

The **mining** sector comprises establishments that extract naturally occurring mineral solids, such as coal and ores; liquid minerals, such as crude petroleum; and gases, such as natural gas. The term mining is used in a broad sense to include quarrying, well operations, beneficiating (i.e., crushing, screening, washing and flotation), and other preparation customarily performed at the mine site, or as a part of mining activities.

2015 Industry Breakout by Employment in Iowa

Mining

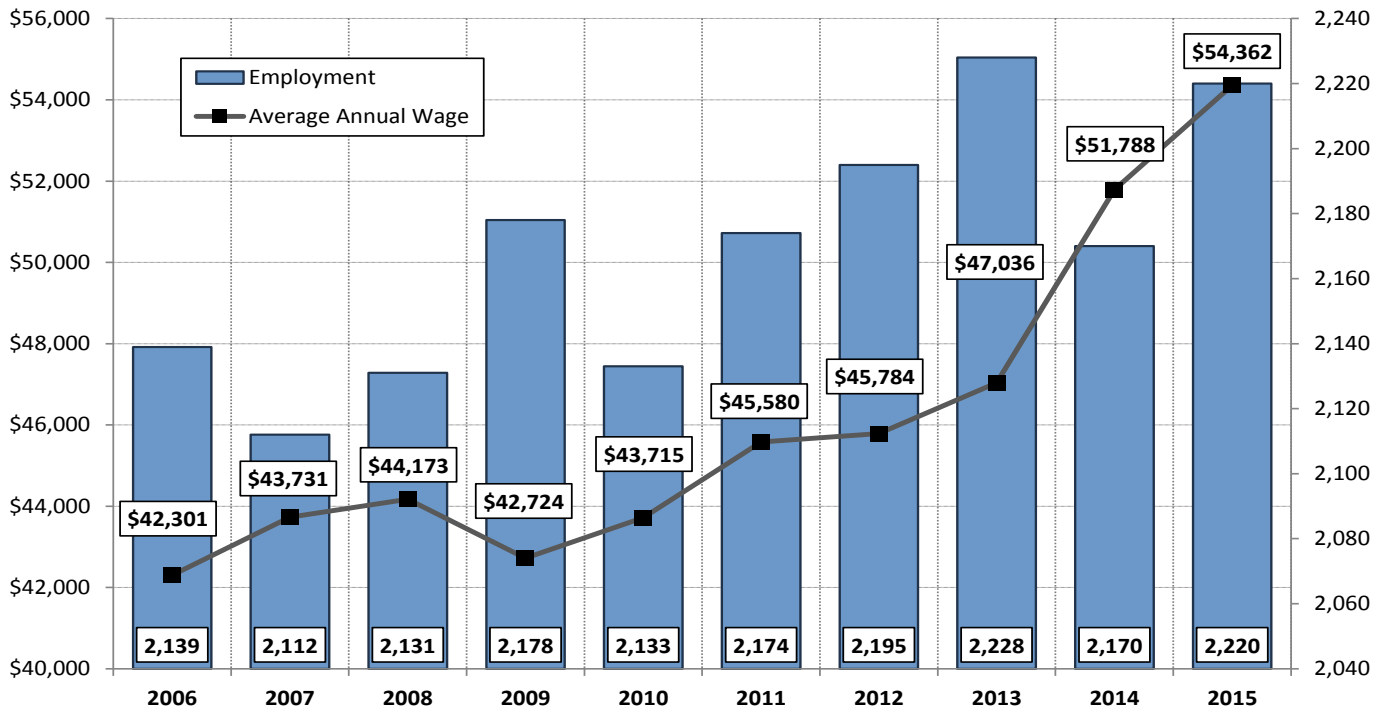
Percentage Employed & Average Annual Wage (AAW) by Subsector



Source: www.bls.gov/cew/bls_naics/bls_naics_app.htm

Source: Quarterly Census of Employment and Wages (QCEW), Iowa Workforce Development

2006-2015 Employment in Mining



Source: Quarterly Census of Employment and Wages (QCEW), Iowa Workforce Development

MINING IOWA INDUSTRY PROFILE



Examples of Mining Employers

Name of Company	Industry
American Colloid Minerals Company	Nonmetallic mineral mining
BMC Aggregates	Nonmetallic mineral mining
Bruening Rock Products	Nonmetallic mineral mining
Douds Stone	Nonmetallic mineral mining
Martin Marietta Materials	Nonmetallic mineral mining
Paul Niemann Construction Company	Nonmetallic mineral mining
River Products Company	Nonmetallic mineral mining
Wendling Quarries	Nonmetallic mineral quarrying

Source: www.iowaworkforcedevelopment.gov/employer-database

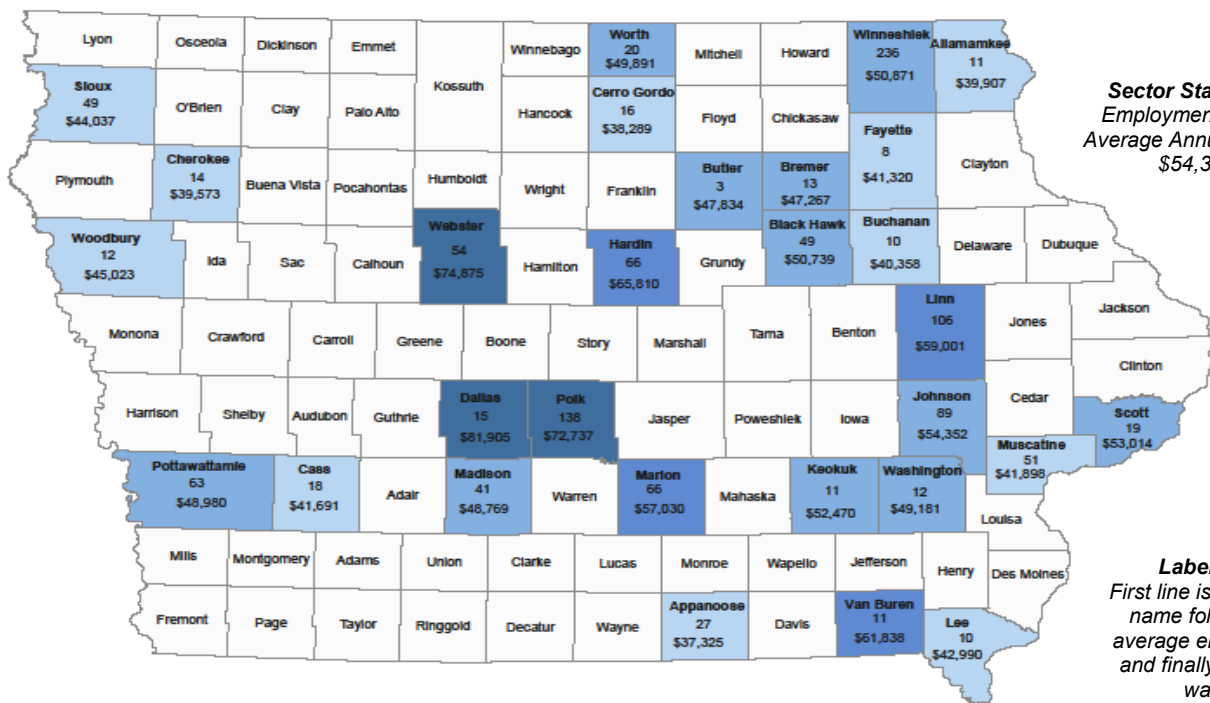
Employers

In 2015, there were 198 **mining** related locations across Iowa.

The **mining (except oil and gas)** subsector represented 97.4 percent of total sector employment. The other 2.6 percent of employment belonged to the **support activities for mining** subsector. Support activities include work activities such as site exploration, taking core samples, directional drilling, etc. Many mining companies do this in-house, but they may contract such duties out to mining support companies.

The **oil and gas extraction** subsector reported no employment in Iowa in 2015.

2015 Covered Employment in Mining



Sector Statewide:
Employment - 2,200
Average Annual Wage - \$54,362

Label Key:
First line is the county name followed by average employment and finally, average wage.



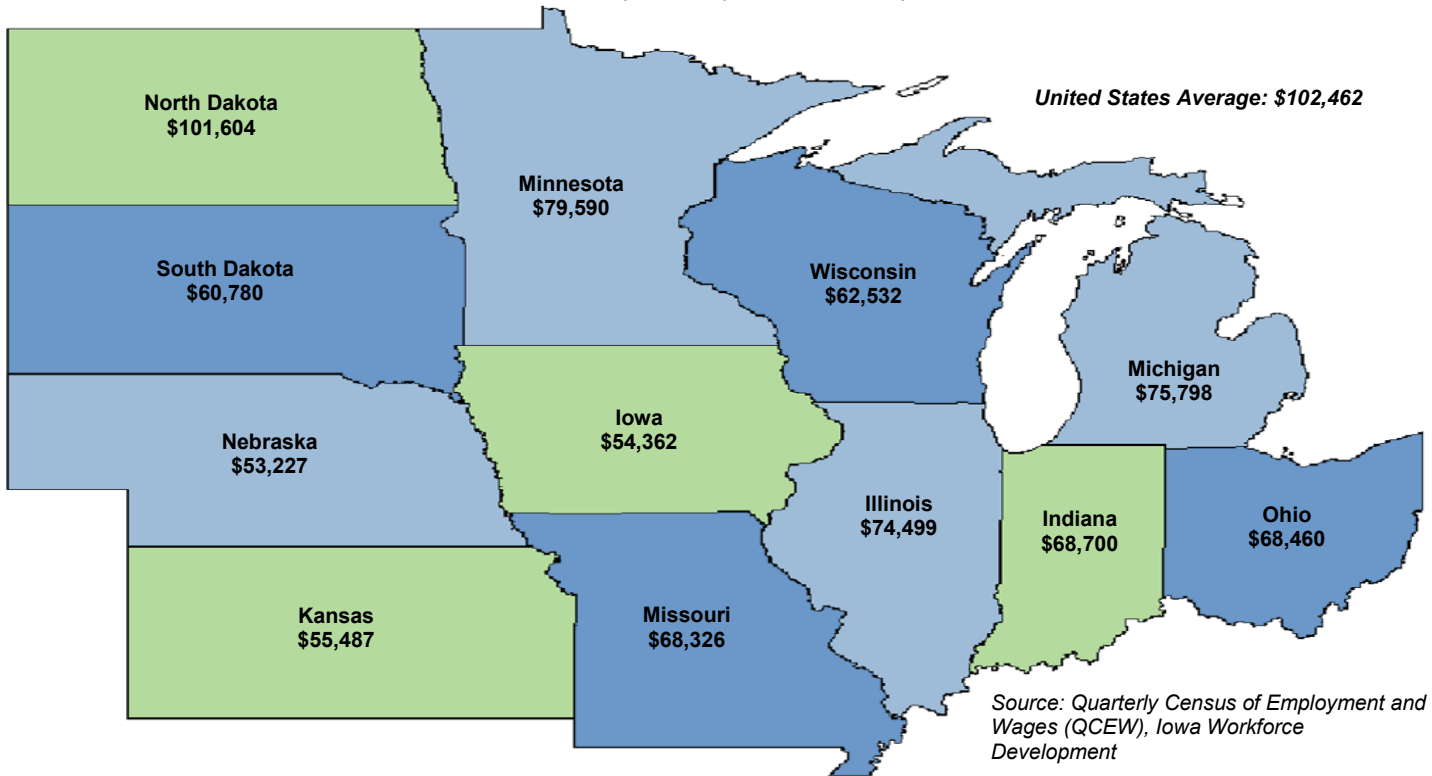
Source: Quarterly Census of Employment and Wages (QCEW), Iowa Workforce Development



MINING IOWA INDUSTRY PROFILE

2015 Average Annual Wage for Covered Employment in Mining

State Comparisons by Private Ownership



Contact Information

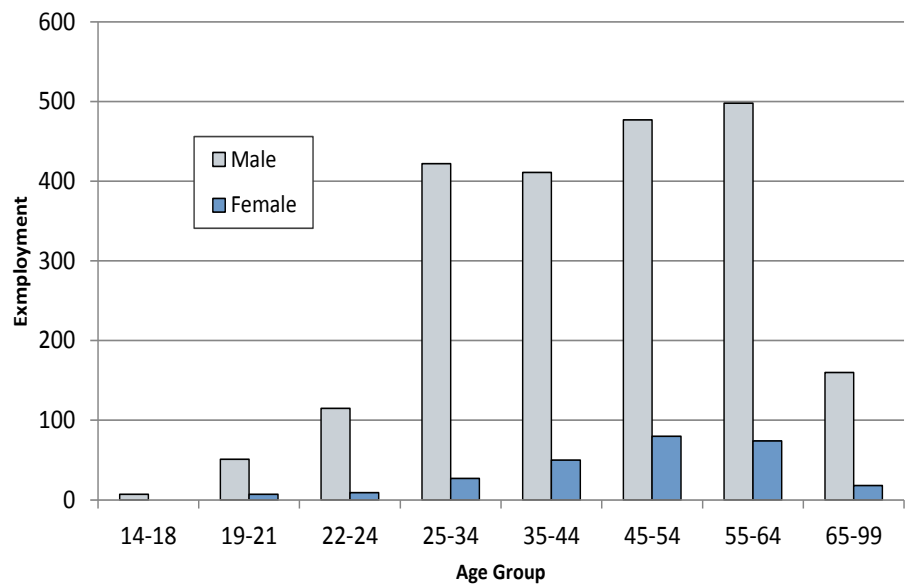
Iowa Workforce Development, Employment Statistics Bureau

1000 E Grand Ave
Des Moines, IA 50319
800-532-1249
Fax: 515-281-8195
lwd.lmi@iwd.iowa.gov
www.iowaworkforcedevelopment.gov

Equal opportunity employer/program.
Auxiliary aids and services are available
upon request to individuals with disabilities.

TTY 515-281-4748
1-800-831-1399

Industry Distribution by Age & Gender 4th Qtr. 2015



Source: Local Employment Dynamics, Iowa Workforce Development and U.S. Census Bureau
<http://lehd.did.census.gov>