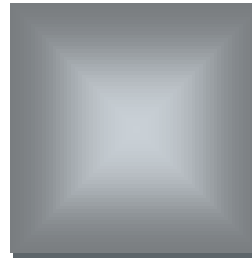


2016 IOWA INDUSTRY PROFILE

ADMINISTRATIVE SUPPORT, WASTE MANAGEMENT, & REMEDIATION IOWA WORKFORCE DEVELOPMENT



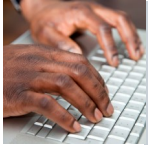
Executive Summary

In 2015, the **administrative support, waste management, and remediation services** sector comprised 4.7 percent of all employment in Iowa. Employment in this sector had an average annual wage of \$29,969 in 2015, which was 32 percent lower than the statewide average of \$44,094 for all industries. In comparison to other states in this region, only Indiana and Wisconsin had lower average annual wages (\$29,095 and \$28,656, respectively).

The largest industry group in this industry is **employment services**, which consists of job placement agencies, temporary help services and other such businesses, which could have employees performing work in any of the other sectors. This sector includes 27,216 employees and represents 38.1 percent of sector employment.

The employment in this sector is predominantly male. Men represent 56.4 percent of all employees in this sector.





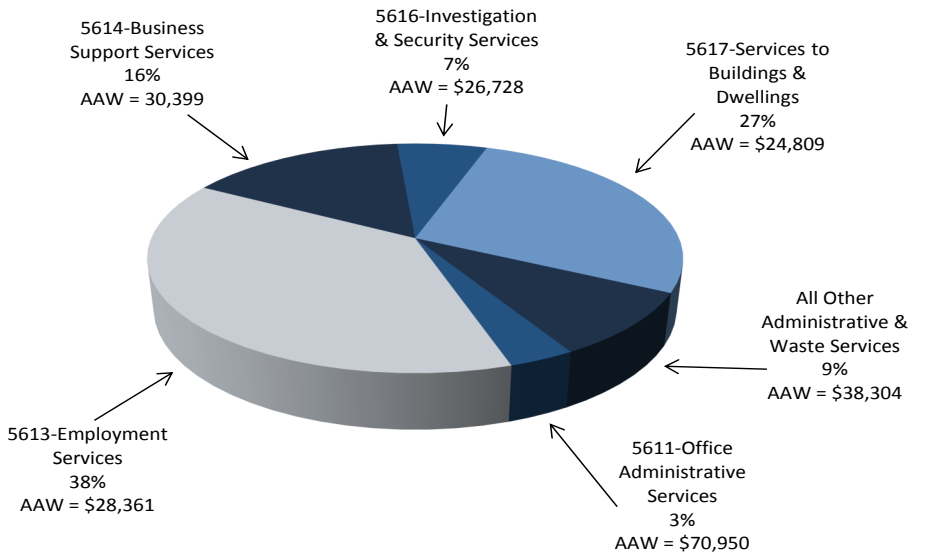
ADMINISTRATIVE SUPPORT, WASTE MANAGEMENT, & REMEDIATION IOWA INDUSTRY PROFILE

What are Administrative Support, Waste Management, and Remediation Services?

This Sector comprises firms that perform routine support activities for the day-to-day operations of other organizations. The firms in this sector specialize in one or more of these support activities and provide these services to clients in a variety of industries and, in some cases, to households.

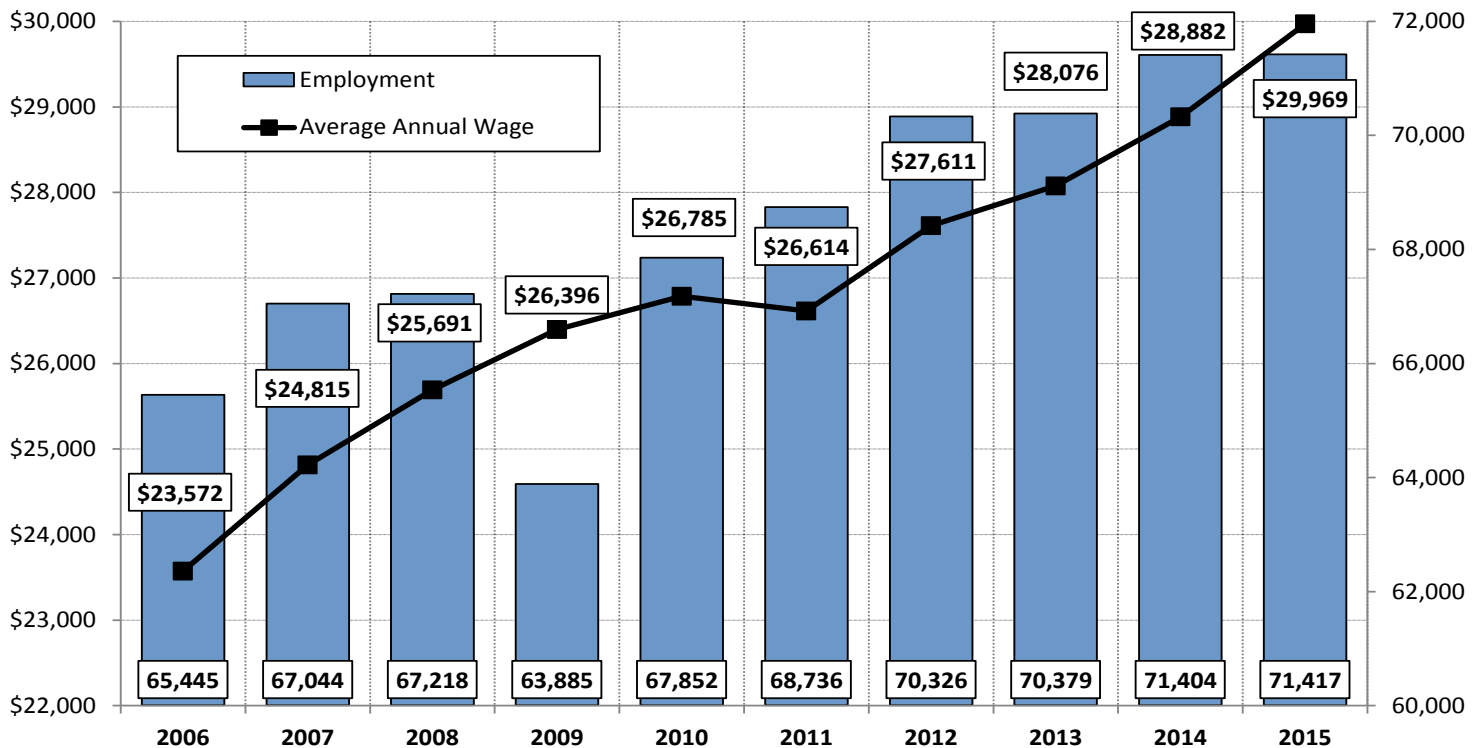
Activities performed include: office administration, hiring and placing of personnel, document preparation and similar clerical services, solicitation, collection, security and surveillance services, cleaning, and waste disposal services.

2015 Industry Breakout by Employment in Iowa
Administrative Support, Waste Management, & Remediation NAICS Industry Coding
Percentage Employed & Average Annual Wage (AAW) by Subsector



Source: www.bls.gov/cew/bls_naics/bls_naics_app.htm Source: Quarterly Census of Employment and Wages (QCEW), Iowa Workforce Development

2006-2015 Employment in Administrative Support, Waste Management, & Remediation in Iowa



Source: Quarterly Census of Employment and Wages (QCEW), Iowa Workforce Development

ADMINISTRATIVE SUPPORT, WASTE MANAGEMENT, & REMEDIATION IOWA INDUSTRY PROFILE



Examples of Major Administrative Support, Waste Management, & Remediation Employers

Name of Company	Industry
American Security LLC	Investigation & security services
CBE Group Inc	Business support services
Kelly Services	Employment Services
Per Mar Security Svc	Investigation & security services
Securitas Security Svc USA	Investigation & security services
Uptown Staffing	Employment Services

Source: www.iowaworkforcedevelopment.gov/employer-database

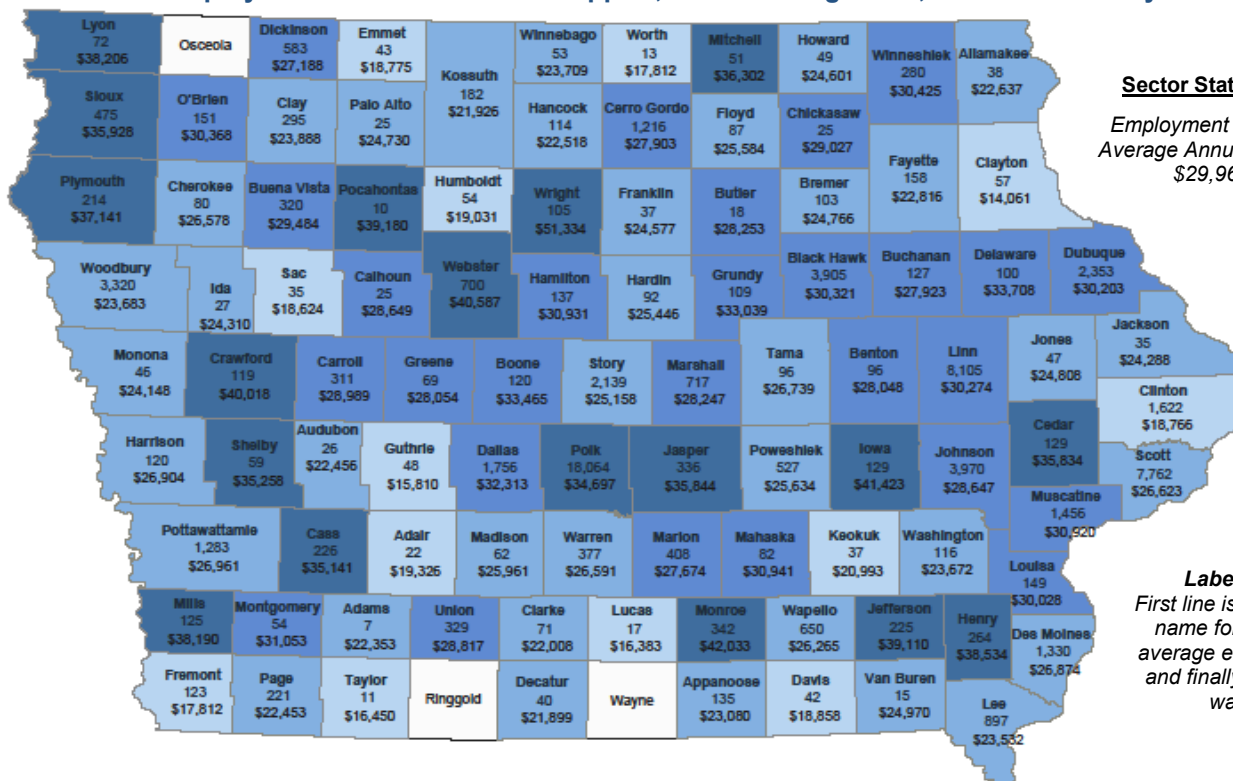
Employers

In 2015, the administrative support, waste management, and remediation services sector averaged 5,078 locations in Iowa.

With the exception of 2009, this sector has grown every year over the past eight years. The effects of the recession were brief, with 2010 employment surpassing 2008 levels. The industry has grown 9.1 percent since 2006.

The administrative & support services sub-sector represented a whopping 95.1 percent of total employment, with the remainder in waste management & remediation services.

2015 Covered Employment in Administrative Support, Waste Management, & Remediation by County



Sector Statewide:

Employment - 71,417
Average Annual Wage - \$29,969

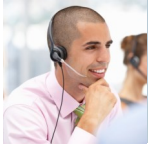
Label Key:

First line is the county name followed by average employment and finally, average wage.

Wages Less than \$20,993 \$20,994 - \$26,961 \$26,962 - \$33,708 Greater than \$33,709

Source: Quarterly Census of Employment and Wages (QCEW), Iowa Workforce Development

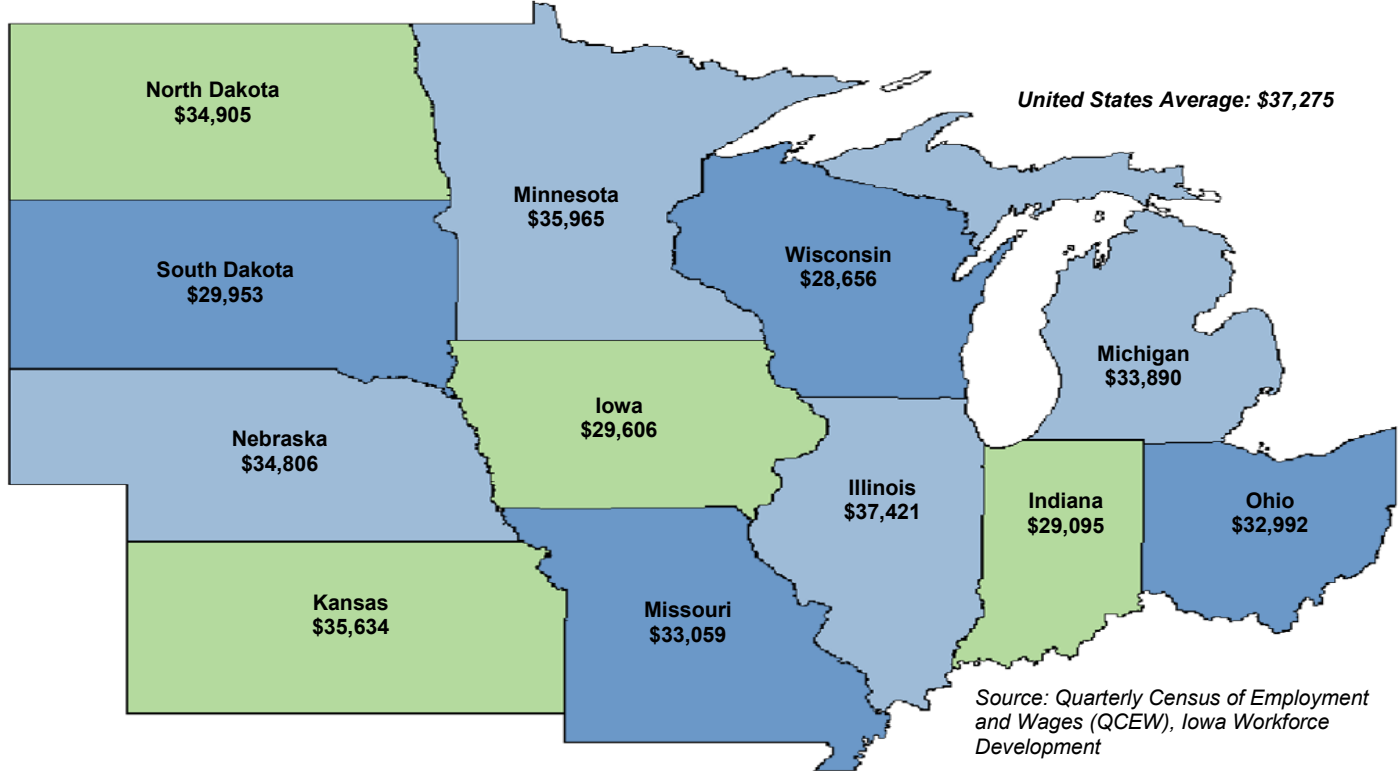
<https://www.iowaworkforcedevelopment.gov/labor-market-information-division>



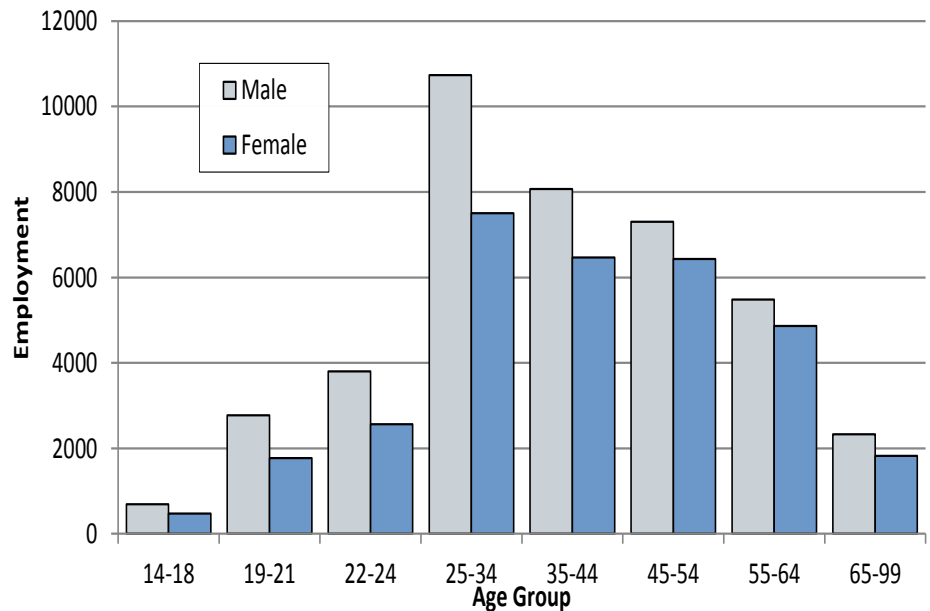
ADMINISTRATIVE SUPPORT, WASTE MANAGEMENT, & REMEDIATION IOWA INDUSTRY PROFILE

2015 Average Annual Wage for Covered Employment in Administrative Support, Waste Management, & Remediation

State Comparisons by Private Ownership



Industry Distribution by Age and Gender 4th Qtr. 2015



Source: Local Employment Dynamics, Iowa Workforce Development and U.S. Census Bureau
<http://lehd.did.census.gov>

Contact Information

Iowa Workforce Development, Employment Statistics Bureau

1000 E Grand Ave
Des Moines, IA 50319
800-532-1249
Fax: 515-281-8195
lwd.lmi@iwd.iowa.gov
www.iowaworkforcedevelopment.gov

Equal opportunity employer/program.
Auxiliary aids and services are available
upon request to individuals with disabilities.

TTY 515-281-4748
1-800-831-1399

IOWA®
WORKFORCE
DEVELOPMENT
Smart. Results.

<http://www.iowaworkforcedevelopment.gov/labor-market-information-division>