

Food Assistance Report Series F-1
(Revised Effective July 2016)
Report for November, 2017



Effective with the July 2016 Report.

Changes have been made to this report to provide more complete and accurate information about the households and individuals in Iowa receiving Food Assistance benefits through the federal Supplemental Nutrition Assistance Program (SNAP).

Categories for households have been renamed or added and the method used to assign households to categories changed to better reflect other types of assistance received from the Iowa Department of Human Services:

- * If one or more individuals receiving Food Assistance also receives FIP, the household is categorized as **FA/FIP**.

- * If no one receives FIP, but at least one individual also receives Medical Assistance, the household is categorized as **FA/Medical Assistance**.

- * If no one receives FIP or Medical Assistance, but at least one individual receives Healthy and Well Kids in Iowa or *hawk-i* benefits, the household is categorized as **FA/hawk-i**.

- * If no one receives FIP, Medical Assistance or *hawk-i*, the household is categorized as **FA Only**.

Categories for individuals have likewise been renamed or added. Using the same categories above, individuals are assigned based on their own circumstances. Previously, the household category was assigned to all members of the Food Assistance household, regardless of individual status. This change provides a more accurate individual count by category.

Finally, the timing for the report has changed. Previously produced at or near the end of the month, the report missed cases that were closed for any number of reasons when the report was created, only to shortly re-open. Now the report is produced mid-month after the report month. As a result, it may appear that caseloads have increased. Instead, the new report provides more complete and accurate counts by including cases missed by the old report.

Note that data for the corresponding month from the prior year was also categorized as described above allowing for an equivalent comparison to the current report month.

Food Assistance Report Series F-1
Report for November, 2017

Food Assistance Program - State Summary

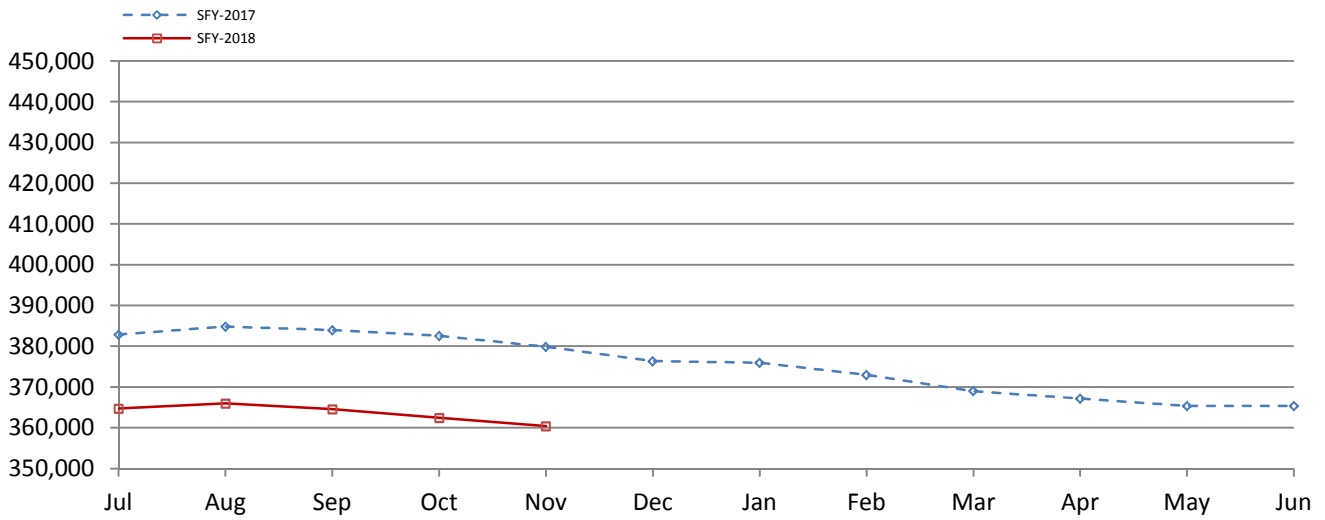
	<u>November, 2017</u>	<u>October, 2017</u>	<u>November, 2016</u>	<u>% of Change Over Last Year</u>
*Households				
FA/FIP	7,852	7,992	8,865	-11.4%
FA/Medical Assistance	142,043	142,871	148,339	-4.2%
FA/ <i>hawk-i</i>	635	614	598	6.2%
FA Only	20,602	20,189	20,986	-1.8%
Total Households	171,132	171,666	178,788	-4.3%
*Recipients				
FA/FIP	20,281	20,694	23,201	-12.6%
FA/Medical Assistance	288,753	291,025	302,736	-4.6%
FA/ <i>hawk-i</i>	2,159	2,127	2,031	6.3%
FA Only	49,188	48,604	51,908	-5.2%
Total Recipients	360,381	362,450	379,876	-5.1%
*Allotments				
FA/FIP	\$3,220,358	\$3,282,496	\$3,727,952	-13.6%
FA/Medical Assistance	\$31,617,902	\$31,968,411	\$33,992,677	-7.0%
FA/ <i>hawk-i</i>	\$156,877	\$150,838	\$136,506	14.9%
FA Only	\$3,443,945	\$3,347,985	\$3,480,753	-1.1%
Total Allotments	\$38,439,082	\$38,749,730	\$41,337,888	-7.0%
*Average Allotment per Household				
FA/FIP	\$410.13	\$410.72	\$420.52	-2.5%
FA/Medical Assistance	\$222.59	\$223.76	\$229.16	-2.9%
FA/ <i>hawk-i</i>	\$247.05	\$245.66	\$228.27	8.2%
FA Only	\$167.17	\$165.83	\$165.86	0.8%
Overall Average per Household	\$224.62	\$225.73	\$231.21	-2.9%
*Average Allotment per Recipient				
FA/FIP	\$158.79	\$158.62	\$160.68	-1.2%
FA/Medical Assistance	\$109.50	\$109.85	\$112.28	-2.5%
FA/ <i>hawk-i</i>	\$72.66	\$70.92	\$67.21	8.1%
FA Only	\$70.02	\$68.88	\$67.06	4.4%
Overall Average per Recipient	\$106.66	\$106.91	\$108.82	-2.0%

State Fiscal Year to Date

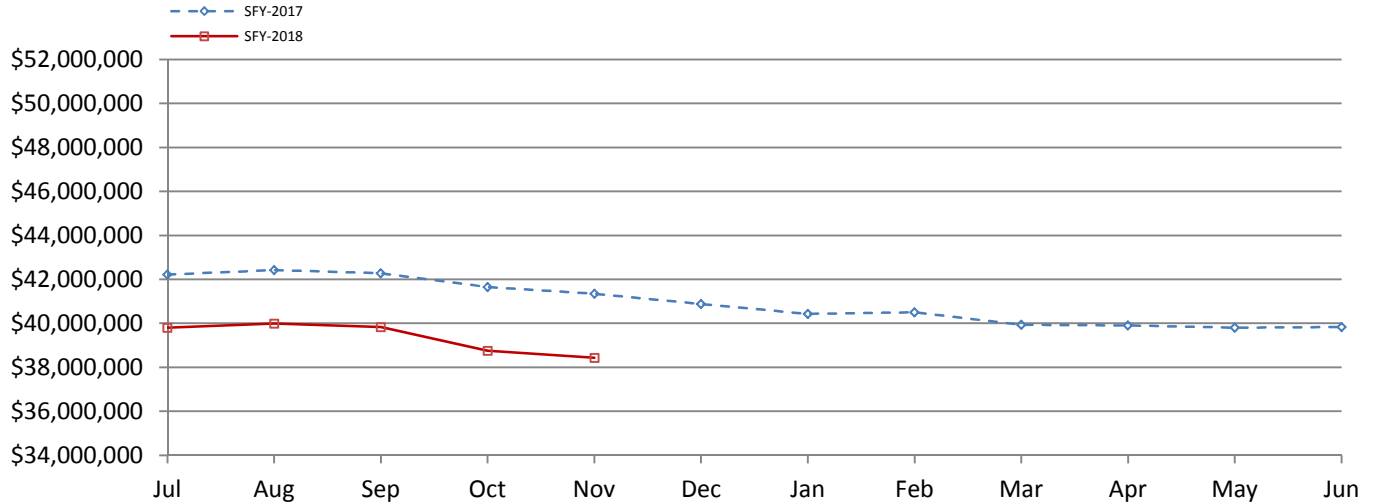
*Allotment	SFY 2018	SFY 2017	% of Change over Last Year
FA/FIP	\$16,437,228	\$18,769,296	-12.42%
FA/Medical Assistance	\$162,839,528	\$172,690,505	-5.70%
FA/ <i>hawk-i</i>	\$742,577	\$707,035	5.03%
FA Only	\$16,806,453	\$17,729,011	-5.20%
Total Allotment	\$196,825,786	\$209,895,847	-6.23%

Food Assistance Report Series F-1
Report for November, 2017

Total Food Assistance Recipients



Total Food Assistance Benefits



Food Assistance Report Series F-1
Report for November, 2017

Food Assistance Participation by Case Type and County

County	FA/FIP			FA/Medical Assistance			FA/hawk-i			FA Only			Total			Participation Rate*
	Households	Recipients	Allotment	Households	Recipients	Allotment	Households	Recipients	Allotment	Households	Recipients	Allotment	Households	Recipients	Allotment	
Area 0 - DHS																
DHS	0	0	\$0	3	9	\$442	0	0	\$0	2	3	\$291	5	12	\$733	0.0%
Area Total	0	0	\$0	3	9	\$442	0	0	\$0	2	3	\$291	5	12	\$733	

Food Assistance Participation by Case Type and County

County	FA/FIP			FA/Medical Assistance			FA/hawk-i			FA Only			Total			Participation Rate*
	Households	Recipients	Allotment	Households	Recipients	Allotment	Households	Recipients	Allotment	Households	Recipients	Allotment	Households	Recipients	Allotment	
Area 1 - Western																
Audubon	11	31	\$4,689	194	434	\$43,442	1	3	\$533	37	79	\$5,128	243	547	\$53,792	44.2%
Buena Vista	37	99	\$15,125	804	1,937	\$190,630	9	42	\$2,198	95	306	\$18,555	945	2,384	\$226,508	44.9%
Carroll	36	90	\$13,822	659	1,373	\$138,900	2	9	\$520	99	273	\$15,995	796	1,745	\$169,237	43.7%
Cass	29	73	\$11,581	682	1,417	\$140,383	4	18	\$636	87	196	\$13,330	802	1,704	\$165,930	45.6%
Cherokee	20	56	\$8,614	416	778	\$79,895	2	10	\$273	48	137	\$7,339	486	981	\$96,121	38.1%
Clay	19	51	\$7,496	693	1,383	\$132,214	1	9	\$352	96	217	\$12,840	809	1,660	\$152,902	43.9%
Crawford	74	197	\$31,195	638	1,468	\$157,528	3	14	\$755	90	237	\$13,153	805	1,916	\$202,631	35.1%
Dickinson	18	39	\$6,298	512	958	\$93,634	2	12	\$645	58	147	\$8,075	590	1,156	\$108,652	45.7%
Emmet	23	66	\$10,008	385	788	\$79,945	9	21	\$1,958	61	174	\$9,958	478	1,049	\$101,869	42.8%
Fremont	15	34	\$5,714	357	777	\$81,626	0	0	\$0	47	145	\$7,410	419	956	\$94,750	60.8%
Greene	22	61	\$9,510	429	942	\$98,491	1	7	\$560	61	173	\$10,423	513	1,183	\$118,984	50.4%
Guthrie	12	28	\$4,649	360	773	\$85,183	2	7	\$252	67	159	\$9,741	441	967	\$99,825	39.1%
Harrison	29	65	\$11,380	652	1,289	\$134,308	1	16	\$498	76	207	\$10,508	758	1,577	\$156,694	51.0%
Ida	7	17	\$2,581	230	475	\$51,089	2	10	\$184	28	74	\$3,223	267	576	\$57,077	34.1%
Kossuth	19	41	\$7,008	441	898	\$93,278	3	11	\$1,287	69	185	\$10,064	532	1,135	\$111,637	37.1%
Lyon	12	31	\$4,499	209	471	\$44,951	0	0	\$0	18	77	\$2,923	239	579	\$52,373	34.2%
Mills	27	63	\$9,823	547	1,167	\$128,986	3	7	\$1,133	51	181	\$8,285	628	1,418	\$148,227	48.5%
Monona	20	55	\$7,542	423	896	\$87,109	0	0	\$0	122	240	\$24,439	565	1,191	\$119,090	45.9%
Montgomery	33	85	\$12,686	676	1,406	\$149,991	3	11	\$1,279	104	232	\$16,286	816	1,734	\$180,242	53.6%
O'Brien	14	35	\$5,395	424	910	\$90,686	1	8	\$519	59	179	\$9,312	498	1,132	\$105,912	40.9%
Osceola	7	21	\$3,422	171	366	\$36,172	0	0	\$0	28	65	\$3,142	206	452	\$42,736	35.9%
Page	39	90	\$13,574	796	1,648	\$164,368	4	9	\$850	98	301	\$19,912	937	2,048	\$198,704	47.6%
Palo Alto	13	36	\$6,558	312	639	\$62,033	5	18	\$1,638	37	116	\$6,060	367	809	\$76,289	37.2%
Plymouth	16	45	\$6,506	589	1,316	\$130,243	5	30	\$1,473	78	223	\$14,788	688	1,614	\$153,010	37.4%
Pottawattamie	348	876	\$139,775	6,214	12,163	\$1,318,678	17	38	\$3,853	1,016	2,161	\$167,159	7,595	15,238	\$1,629,465	74.2%
Sac	10	21	\$3,304	305	668	\$64,965	1	7	\$182	49	135	\$4,245	365	831	\$72,696	43.4%
Shelby	15	43	\$7,183	413	865	\$83,072	1	7	\$830	49	141	\$6,928	478	1,056	\$98,013	39.6%
Sioux	13	22	\$3,559	503	1,140	\$115,067	7	21	\$1,766	56	184	\$8,046	579	1,367	\$128,438	22.9%
Taylor	10	26	\$4,064	261	543	\$54,204	1	1	\$253	32	88	\$6,644	304	658	\$65,165	37.0%
Woodbury	391	1,062	\$164,078	6,217	13,427	\$1,471,946	27	97	\$7,607	836	2,100	\$150,971	7,471	16,686	\$1,794,602	57.8%
Area Total	1,339	3,459	\$541,638	25,512	53,315	\$5,603,017	117	443	\$32,034	3,652	9,132	\$604,882	30,620	66,349	\$6,781,571	50.2%

Food Assistance Report Series F-1
Report for November, 2017

Food Assistance Participation by Case Type and County

County	FA/FIP			FA/Medical Assistance			FA/hawk-i			FA Only			Total			Participation Rate*
	Households	Recipients	Allotment	Households	Recipients	Allotment	Households	Recipients	Allotment	Households	Recipients	Allotment	Households	Recipients	Allotment	
Area 2 - Northern																
Allamakee	40	94	\$14,864	465	1,097	\$106,312	6	9	\$891	61	178	\$9,940	572	1,378	\$132,007	40.6%
Black Hawk	580	1,407	\$220,436	7,706	14,564	\$1,584,030	35	105	\$9,519	1,163	2,667	\$183,893	9,484	18,743	\$1,997,878	53.3%
Bremer	32	77	\$13,808	488	990	\$101,617	5	19	\$1,152	63	179	\$8,297	588	1,265	\$124,874	34.9%
Buchanan	34	77	\$12,846	673	1,312	\$133,072	1	13	\$352	70	199	\$11,808	778	1,601	\$158,078	42.4%
Butler	21	52	\$7,930	467	990	\$96,252	1	17	\$57	52	135	\$5,259	541	1,194	\$109,498	45.7%
Calhoun	11	24	\$3,817	321	700	\$64,560	1	12	\$59	35	106	\$4,362	368	842	\$72,798	33.1%
Cerro Gordo	92	249	\$40,661	2,269	4,150	\$437,760	5	21	\$1,161	310	645	\$43,616	2,676	5,065	\$523,198	48.5%
Chickasaw	9	29	\$4,753	301	685	\$67,780	2	4	\$798	56	137	\$7,657	368	855	\$80,988	28.9%
Clayton	14	33	\$5,167	503	1,011	\$94,527	2	6	\$842	67	179	\$7,930	586	1,229	\$108,466	29.7%
Delaware	28	83	\$12,636	484	959	\$102,212	1	12	\$81	55	149	\$9,552	568	1,203	\$124,481	29.6%
Fayette	55	129	\$21,961	990	2,069	\$201,175	3	14	\$517	128	346	\$21,173	1,176	2,558	\$244,826	50.3%
Floyd	51	134	\$20,637	741	1,522	\$146,332	3	10	\$772	91	235	\$14,837	886	1,901	\$182,578	43.3%
Franklin	22	62	\$9,637	385	858	\$87,615	2	8	\$48	37	132	\$6,613	446	1,060	\$103,913	40.4%
Grundy	9	27	\$3,369	258	543	\$54,755	0	0	\$0	30	105	\$5,385	297	675	\$63,509	34.3%
Hamilton	29	72	\$12,604	493	970	\$97,711	0	0	\$0	63	151	\$9,492	585	1,193	\$119,807	33.8%
Hancock	17	49	\$6,708	265	593	\$59,838	1	2	\$109	33	103	\$6,629	316	747	\$73,284	35.2%
Hardin	30	91	\$13,487	673	1,467	\$138,294	4	12	\$2,102	76	221	\$11,188	783	1,791	\$165,071	50.3%
Howard	17	42	\$6,138	256	499	\$49,433	4	10	\$968	39	98	\$5,451	316	649	\$61,990	27.0%
Humboldt	13	33	\$5,423	340	700	\$73,937	1	6	\$370	37	115	\$5,803	391	854	\$85,533	33.0%
Marshall	100	259	\$40,655	2,034	4,402	\$461,231	7	25	\$1,531	297	807	\$52,096	2,438	5,493	\$555,513	56.6%
Mitchell	13	28	\$4,226	270	534	\$50,796	1	1	\$65	37	106	\$7,250	321	669	\$62,337	29.8%
Pocahontas	8	24	\$3,605	289	681	\$65,566	1	8	\$504	49	112	\$6,484	347	825	\$76,159	42.8%
Webster	177	432	\$67,262	2,462	4,730	\$514,519	5	25	\$1,563	322	724	\$51,300	2,966	5,911	\$634,644	61.8%
Winnebago	16	38	\$6,158	341	729	\$78,327	3	5	\$709	49	119	\$7,638	409	891	\$92,832	39.4%
Winneshiek	21	55	\$8,172	388	747	\$70,174	0	0	\$0	45	107	\$4,771	454	909	\$83,117	29.6%
Worth	8	30	\$4,308	210	440	\$43,973	1	4	\$15	33	94	\$4,585	252	568	\$52,881	32.6%
Wright	41	115	\$18,151	582	1,326	\$146,518	2	13	\$373	66	172	\$11,393	691	1,626	\$176,435	53.3%
Area Total	1,488	3,745	\$589,419	24,654	49,268	\$5,128,316	97	361	\$24,558	3,364	8,321	\$524,402	29,603	61,695	\$6,266,695	45.8%

Food Assistance Report Series F-1
Report for November, 2017

Food Assistance Participation by Case Type and County

County	FA/FIP			FA/Medical Assistance			FA/hawk-i			FA Only			Total			Participation Rate*
	Households	Recipients	Allotment	Households	Recipients	Allotment	Households	Recipients	Allotment	Households	Recipients	Allotment	Households	Recipients	Allotment	
Area 3 - Eastern																
Cedar	13	30	\$5,219	440	972	\$103,340	3	9	\$1,255	56	160	\$9,451	512	1,171	\$119,265	37.9%
Clinton	177	415	\$69,884	3,175	6,205	\$691,813	5	27	\$1,169	358	864	\$56,798	3,715	7,511	\$819,664	64.1%
Des Moines	186	451	\$74,258	2,813	5,660	\$629,152	12	30	\$2,826	344	908	\$63,038	3,355	7,049	\$769,274	61.9%
Dubuque	274	702	\$110,072	3,927	8,071	\$883,486	10	49	\$1,814	602	1,313	\$103,530	4,813	10,135	\$1,098,902	52.8%
Henry	45	127	\$20,774	938	2,006	\$215,612	2	9	\$482	87	266	\$13,585	1,072	2,408	\$250,453	48.0%
Jackson	45	113	\$17,717	837	1,738	\$176,146	2	8	\$370	70	212	\$10,295	954	2,071	\$204,528	43.5%
Lee	148	385	\$66,434	2,330	4,725	\$511,331	5	15	\$1,095	269	712	\$50,469	2,752	5,837	\$629,329	58.9%
Louisa	26	64	\$9,770	375	785	\$81,049	3	7	\$505	37	108	\$6,990	441	964	\$98,314	36.1%
Muscatine	123	342	\$52,690	2,463	5,109	\$562,332	7	25	\$921	284	811	\$49,954	2,877	6,287	\$665,897	62.3%
Scott	702	1,766	\$285,579	10,799	21,767	\$2,550,092	33	106	\$9,063	1,737	3,894	\$320,014	13,271	27,533	\$3,164,748	75.8%
Area Total	1,739	4,395	\$712,397	28,097	57,038	\$6,404,353	82	285	\$19,500	3,844	9,248	\$684,124	33,762	70,966	\$7,820,374	62.2%

Food Assistance Participation by Case Type and County

County	FA/FIP			FA/Medical Assistance			FA/hawk-i			FA Only			Total			Participation Rate*
	Households	Recipients	Allotment	Households	Recipients	Allotment	Households	Recipients	Allotment	Households	Recipients	Allotment	Households	Recipients	Allotment	
Area 4 - Cedar Rapids																
Appanoose	36	98	\$16,266	856	1,551	\$159,701	6	12	\$1,959	104	236	\$14,558	1,002	1,897	\$192,484	53.7%
Benton	32	88	\$12,501	828	1,675	\$176,941	3	24	\$1,097	93	253	\$12,894	956	2,040	\$203,433	46.5%
Davis	12	38	\$6,093	246	501	\$53,470	1	7	\$10	36	103	\$6,645	295	649	\$66,218	22.5%
Iowa	8	17	\$2,623	373	768	\$81,536	3	5	\$980	46	132	\$7,304	430	922	\$92,443	31.7%
Jasper	83	185	\$29,051	1,690	3,379	\$372,638	10	29	\$1,852	224	561	\$36,831	2,007	4,154	\$440,372	57.8%
Jefferson	32	74	\$10,961	939	1,655	\$178,741	4	19	\$306	136	299	\$19,478	1,111	2,047	\$209,486	45.1%
Johnson	249	709	\$108,219	4,187	8,642	\$965,366	20	56	\$2,923	644	1,417	\$106,484	5,100	10,824	\$1,182,992	31.3%
Jones	31	73	\$12,469	633	1,425	\$143,406	2	5	\$856	80	211	\$12,467	746	1,714	\$169,198	45.2%
Keokuk	17	42	\$6,672	426	903	\$93,954	2	6	\$821	39	129	\$5,679	484	1,080	\$107,126	40.0%
Linn	694	1,877	\$290,688	10,828	21,431	\$2,388,671	44	154	\$7,675	1,594	3,513	\$262,587	13,160	26,975	\$2,949,621	66.7%
Mahaska	67	164	\$24,547	1,099	2,136	\$234,769	8	25	\$2,603	201	432	\$32,857	1,375	2,757	\$294,776	46.9%
Monroe	22	57	\$8,741	316	678	\$66,430	2	5	\$441	49	108	\$7,841	389	848	\$83,453	39.6%
Poweshiek	17	41	\$6,418	558	1,113	\$112,784	0	0	\$0	85	203	\$13,487	660	1,357	\$132,689	37.7%
Tama	20	42	\$7,536	652	1,470	\$149,777	5	12	\$1,499	80	233	\$14,857	757	1,757	\$173,669	48.3%
Van Buren	10	21	\$4,205	328	660	\$66,272	0	0	\$0	35	86	\$5,529	373	767	\$76,006	39.4%
Wapello	189	457	\$75,095	2,607	4,950	\$550,979	10	37	\$2,030	325	792	\$53,283	3,131	6,236	\$681,387	55.4%
Washington	20	49	\$6,816	719	1,535	\$160,627	8	23	\$1,237	73	249	\$11,190	820	1,856	\$179,870	42.5%
Area Total	1,539	4,032	\$628,901	27,285	54,472	\$5,956,062	128	419	\$26,289	3,844	8,957	\$623,971	32,796	67,880	\$7,235,223	48.6%

Food Assistance Report Series F-1
Report for November, 2017

Food Assistance Participation by Case Type and County

County	FA/FIP			FA/Medical Assistance			FA/hawk-i			FA Only			Total			Participation Rate*
	Households	Recipients	Allotment	Households	Recipients	Allotment	Households	Recipients	Allotment	Households	Recipients	Allotment	Households	Recipients	Allotment	
Area 5 - Des Moines																
Adair	11	28	\$4,159	271	550	\$53,249	3	7	\$347	38	105	\$5,473	323	690	\$63,228	45.3%
Adams	5	11	\$2,144	145	291	\$30,486	2	5	\$263	26	57	\$3,286	178	364	\$36,179	47.0%
Boone	31	67	\$10,438	887	1,771	\$201,005	6	13	\$1,655	131	322	\$20,481	1,055	2,173	\$233,579	35.2%
Clarke	18	43	\$6,638	535	1,141	\$126,879	2	7	\$410	61	190	\$10,832	616	1,381	\$144,759	51.1%
Dallas	39	107	\$17,343	1,341	2,837	\$314,399	14	41	\$3,469	164	514	\$29,830	1,558	3,499	\$365,041	37.5%
Decatur	20	46	\$7,345	462	961	\$100,412	0	0	\$0	90	187	\$15,093	572	1,194	\$122,850	43.4%
Lucas	19	41	\$7,541	463	980	\$101,431	2	8	\$687	61	183	\$9,973	545	1,212	\$119,632	59.2%
Madison	8	27	\$3,718	417	885	\$98,782	3	5	\$815	57	172	\$10,128	485	1,089	\$113,443	37.7%
Marion	39	90	\$14,066	1,095	2,299	\$250,179	2	10	\$519	141	407	\$21,880	1,277	2,806	\$286,644	47.0%
Polk	1,365	3,718	\$595,770	26,313	53,974	\$6,238,708	149	443	\$39,922	4,291	9,515	\$740,169	32,118	67,650	\$7,614,569	68.2%
Ringgold	5	18	\$2,631	203	390	\$39,470	0	0	\$0	15	55	\$2,792	223	463	\$44,893	38.0%
Story	92	209	\$33,794	2,161	4,081	\$472,590	18	43	\$3,978	519	963	\$81,521	2,790	5,296	\$591,883	20.1%
Union	34	93	\$13,880	731	1,439	\$158,495	3	10	\$880	90	251	\$18,366	858	1,793	\$191,621	52.4%
Warren	46	115	\$20,268	1,185	2,468	\$272,735	5	20	\$891	183	509	\$32,312	1,419	3,112	\$326,206	42.7%
Wayne	18	42	\$8,268	302	624	\$66,892	2	8	\$660	29	99	\$4,139	351	773	\$79,959	45.6%
Area Total	1,750	4,655	\$748,003	36,511	74,691	\$8,525,712	211	620	\$54,496	5,896	13,529	\$1,006,275	44,368	93,495	\$10,334,486	54.0%
State Total	7,855	20,286	\$3,220,358	142,062	288,793	\$31,617,902	635	2,128	\$156,877	20,602	49,190	\$3,443,945	171,154	360,397	\$38,439,082	51.9%

* Participation Rate is the percentage of individuals at or below 160% FPL who are receiving Food Assistance in a given area (County/SA/State). It is calculated by dividing the number of Food Assistance Recipients in an area (County/SA/State) by the number of persons in that area at or below 160% of the Federal Poverty Level (as counted in the 2015 American Community Survey).