

Food Assistance Report Series F-1
(Revised Effective July 2016)
Report for October, 2017



Effective with the July 2016 Report.

Changes have been made to this report to provide more complete and accurate information about the households and individuals in Iowa receiving Food Assistance benefits through the federal Supplemental Nutrition Assistance Program (SNAP).

Categories for households have been renamed or added and the method used to assign households to categories changed to better reflect other types of assistance received from the Iowa Department of Human Services:

- * If one or more individuals receiving Food Assistance also receives FIP, the household is categorized as **FA/FIP**.

- * If no one receives FIP, but at least one individual also receives Medical Assistance, the household is categorized as **FA/Medical Assistance**.

- * If no one receives FIP or Medical Assistance, but at least one individual receives Healthy and Well Kids in Iowa or *hawk-i* benefits, the household is categorized as **FA/hawk-i**.

- * If no one receives FIP, Medical Assistance or *hawk-i*, the household is categorized as **FA Only**.

Categories for individuals have likewise been renamed or added. Using the same categories above, individuals are assigned based on their own circumstances. Previously, the household category was assigned to all members of the Food Assistance household, regardless of individual status. This change provides a more accurate individual count by category.

Finally, the timing for the report has changed. Previously produced at or near the end of the month, the report missed cases that were closed for any number of reasons when the report was created, only to shortly re-open. Now the report is produced mid-month after the report month. As a result, it may appear that caseloads have increased. Instead, the new report provides more complete and accurate counts by including cases missed by the old report.

Note that data for the corresponding month from the prior year was also categorized as described above allowing for an equivalent comparison to the current report month.

Food Assistance Report Series F-1
Report for October, 2017

Food Assistance Program - State Summary

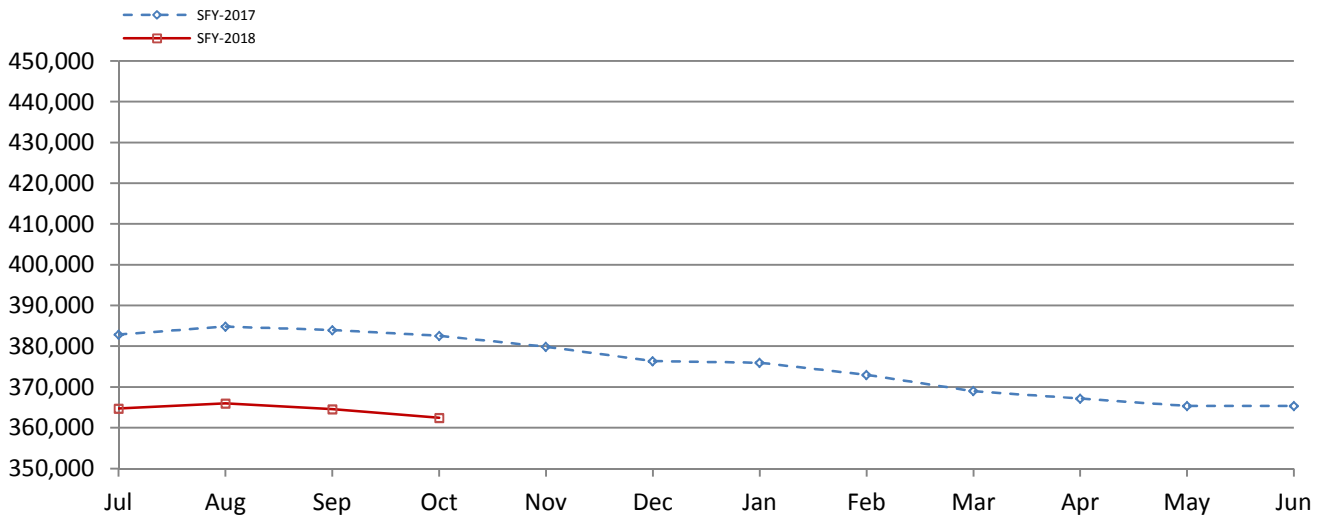
	<u>October, 2017</u>	<u>September, 2017</u>	<u>October, 2016</u>	<u>% of Change Over Last Year</u>
*Households				
FA/FIP	7,992	7,919	9,028	-11.5%
FA/Medical Assistance	140,510	143,577	148,769	-5.6%
FA/ <i>hawk-i</i>	677	614	623	8.7%
FA Only	22,487	20,189	21,221	6.0%
Total Households	171,666	172,299	179,641	-4.4%
*Recipients				
FA/FIP	20,692	20,502	23,592	-12.3%
FA/Medical Assistance	236,595	292,780	304,056	-22.2%
FA/ <i>hawk-i</i>	2,244	2,113	2,061	8.9%
FA Only	102,919	49,170	52,840	94.8%
Total Recipients	362,450	364,565	382,549	-5.3%
*Allotments				
FA/FIP	\$3,282,496	\$3,320,161	\$3,800,882	-13.6%
FA/Medical Assistance	\$31,421,024	\$32,982,742	\$34,189,179	-8.1%
FA/ <i>hawk-i</i>	\$165,160	\$156,548	\$150,077	10.1%
FA Only	\$3,881,050	\$3,376,873	\$3,514,275	10.4%
Total Allotments	\$38,749,730	\$39,836,324	\$41,654,413	-7.0%
*Average Allotment per Household				
FA/FIP	\$410.72	\$419.27	\$421.01	-2.4%
FA/Medical Assistance	\$223.62	\$229.72	\$229.81	-2.7%
FA/ <i>hawk-i</i>	\$243.96	\$254.96	\$240.89	1.3%
FA Only	\$172.59	\$167.26	\$165.60	4.2%
Overall Average per Household	\$225.73	\$231.20	\$231.88	-2.7%
*Average Allotment per Recipient				
FA/FIP	\$158.64	\$161.94	\$161.11	-1.5%
FA/Medical Assistance	\$132.81	\$112.65	\$112.44	18.1%
FA/ <i>hawk-i</i>	\$73.60	\$74.09	\$72.82	1.1%
FA Only	\$37.71	\$68.68	\$66.51	-43.3%
Overall Average per Recipient	\$106.91	\$109.27	\$108.89	-1.8%

State Fiscal Year to Date

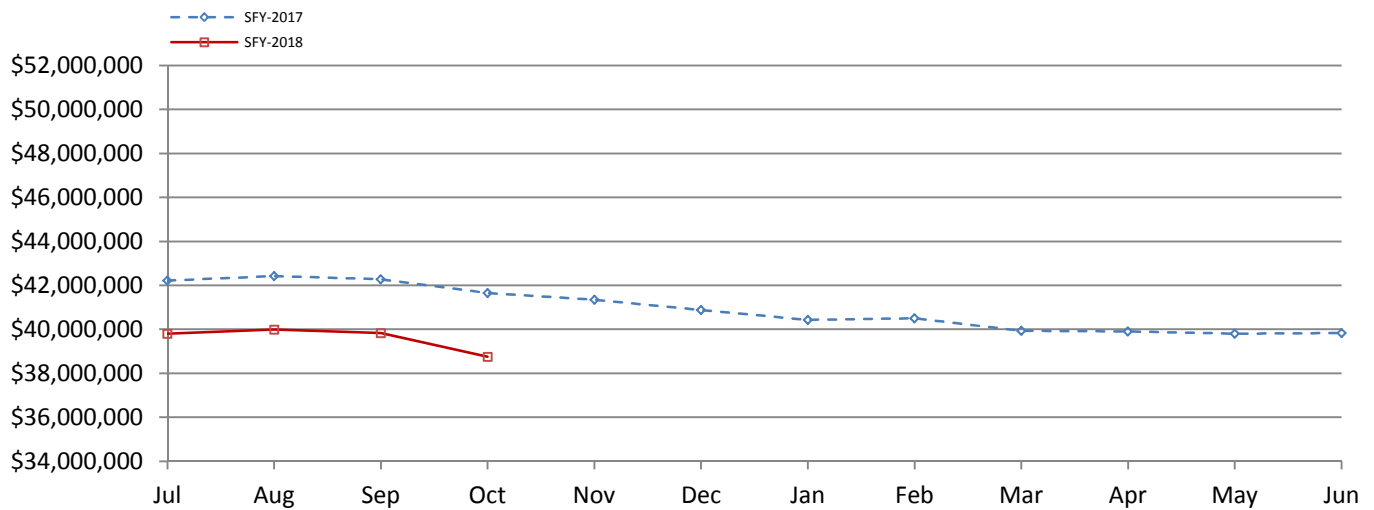
*Allotment	SFY 2018	SFY 2017	% of Change over Last Year
FA/FIP	\$13,216,870	\$15,041,344	-12.13%
FA/Medical Assistance	\$130,674,239	\$138,697,828	-5.78%
FA/ <i>hawk-i</i>	\$600,022	\$570,529	5.17%
FA Only	\$13,895,573	\$14,248,258	-2.48%
Total Allotment	\$158,386,704	\$168,557,959	-6.03%

Food Assistance Report Series F-1
Report for October, 2017

Total Food Assistance Recipients



Total Food Assistance Benefits



Food Assistance Report Series F-1
Report for October, 2017

Food Assistance Participation by Case Type and County

County	FA/FIP			FA/Medical Assistance			FA/hawk-i			FA Only			Total			Participation Rate*					
	Households	Recipients	Allotment	Households	Recipients	Allotment	Households	Recipients	Allotment	Households	Recipients	Allotment	Households	Recipients	Allotment						
Area 0 - DHS																					
DHS		1	4	\$631		6	9	\$759		0	0	\$0		2	4	\$281		9	17	\$1,671	0.0%
Area Total		1	4	\$631		6	9	\$759		0	0	\$0		2	4	\$281		9	17	\$1,671	

Food Assistance Participation by Case Type and County

County	FA/FIP			FA/Medical Assistance			FA/hawk-i			FA Only			Total			Participation Rate*
	Households	Recipients	Allotment	Households	Recipients	Allotment	Households	Recipients	Allotment	Households	Recipients	Allotment	Households	Recipients	Allotment	
Area 1 - Western																
Audubon	11	33	\$4,888	194	345	\$44,326	0	0	\$0	34	168	\$4,811	239	546	\$54,025	44.1%
Buena Vista	41	109	\$17,961	791	1,484	\$184,924	8	36	\$2,443	124	792	\$23,328	964	2,421	\$228,656	45.6%
Carroll	37	101	\$15,634	673	1,145	\$142,493	4	13	\$1,217	109	527	\$17,438	823	1,786	\$176,782	44.8%
Cass	27	66	\$10,930	698	1,215	\$146,675	5	22	\$610	99	480	\$15,400	829	1,783	\$173,615	47.7%
Cherokee	17	43	\$5,934	403	654	\$78,831	2	10	\$273	58	262	\$9,412	480	969	\$94,450	37.6%
Clay	18	47	\$7,154	690	1,144	\$130,698	2	13	\$739	105	469	\$15,742	815	1,673	\$154,333	44.2%
Crawford	79	194	\$31,294	644	1,179	\$157,503	3	16	\$755	101	586	\$17,790	827	1,975	\$207,342	36.2%
Dickinson	12	24	\$3,606	501	786	\$92,572	2	13	\$645	67	317	\$10,777	582	1,140	\$107,600	45.1%
Emmet	27	77	\$11,926	379	639	\$76,959	7	13	\$915	69	333	\$12,989	482	1,062	\$102,789	43.3%
Fremont	16	38	\$6,630	353	623	\$81,312	1	3	\$365	59	309	\$9,401	429	973	\$97,708	61.9%
Greene	21	54	\$8,632	428	776	\$95,072	3	11	\$1,005	70	369	\$12,368	522	1,210	\$117,077	51.6%
Guthrie	14	34	\$5,184	352	621	\$84,968	4	12	\$728	71	314	\$10,087	441	981	\$100,967	39.7%
Harrison	27	59	\$10,687	643	1,051	\$133,374	2	10	\$518	80	422	\$11,762	752	1,542	\$156,341	49.9%
Ida	6	16	\$2,395	229	392	\$49,003	3	11	\$320	33	172	\$4,566	271	591	\$56,284	35.0%
Kossuth	20	46	\$7,167	441	739	\$91,748	1	4	\$640	72	343	\$11,695	534	1,132	\$111,250	37.0%
Lyon	10	23	\$3,531	210	380	\$47,588	0	0	\$0	23	193	\$3,260	243	596	\$54,379	35.2%
Mills	27	63	\$10,065	546	952	\$127,091	4	9	\$1,141	58	396	\$10,390	635	1,420	\$148,687	48.6%
Monona	18	57	\$8,645	421	745	\$86,604	0	0	\$0	132	403	\$27,170	571	1,205	\$122,419	46.5%
Montgomery	34	90	\$14,401	661	1,117	\$145,562	4	12	\$1,378	106	467	\$18,246	805	1,686	\$179,587	52.1%
O'Brien	12	28	\$3,879	420	729	\$88,015	3	15	\$1,166	66	374	\$11,688	501	1,146	\$104,748	41.4%
Osceola	7	26	\$4,116	167	285	\$37,575	2	8	\$147	27	151	\$3,776	203	470	\$45,614	37.3%
Page	40	97	\$14,394	810	1,389	\$170,149	2	11	\$86	107	593	\$20,225	959	2,090	\$204,854	48.6%
Palo Alto	11	30	\$4,782	316	528	\$62,983	4	17	\$1,207	39	213	\$5,811	370	788	\$74,783	36.2%
Plymouth	14	42	\$6,325	581	1,044	\$132,497	7	29	\$1,164	74	481	\$11,890	676	1,596	\$151,876	37.0%
Pottawattamie	357	902	\$141,577	6,107	9,956	\$1,293,933	14	33	\$3,388	1,073	4,274	\$176,837	7,551	15,165	\$1,615,735	73.9%
Sac	11	23	\$3,454	294	533	\$65,221	0	0	\$0	46	241	\$3,964	351	797	\$72,639	41.7%
Shelby	17	45	\$6,995	416	711	\$81,302	0	0	\$0	63	309	\$8,421	496	1,065	\$96,718	40.0%
Sioux	14	25	\$4,383	500	869	\$114,238	4	9	\$899	83	501	\$13,801	601	1,404	\$133,321	23.5%
Taylor	6	17	\$2,567	257	440	\$52,991	1	1	\$253	35	195	\$7,178	299	653	\$62,989	36.8%
Woodbury	390	1,055	\$163,186	6,149	10,748	\$1,459,387	26	107	\$7,178	944	4,921	\$171,944	7,509	16,831	\$1,801,695	58.3%
Area Total	1,341	3,464	\$542,322	25,274	43,219	\$5,555,594	118	438	\$29,180	4,027	19,575	\$682,167	30,760	66,696	\$6,809,263	50.4%

Food Assistance Report Series F-1
Report for October, 2017

Food Assistance Participation by Case Type and County

County	FA/FIP			FA/Medical Assistance			FA/hawk-i			FA Only			Total			Participation Rate*
	Households	Recipients	Allotment	Households	Recipients	Allotment	Households	Recipients	Allotment	Households	Recipients	Allotment	Households	Recipients	Allotment	
Area 2 - Northern																
Allamakee	45	104	\$16,328	446	829	\$103,255	7	13	\$953	84	435	\$15,074	582	1,381	\$135,610	40.7%
Black Hawk	603	1,463	\$230,781	7,625	12,103	\$1,572,671	42	119	\$10,451	1,230	5,122	\$202,190	9,500	18,807	\$2,016,093	53.5%
Bremer	33	79	\$12,960	481	836	\$103,543	5	19	\$1,411	72	374	\$9,684	591	1,308	\$127,598	36.1%
Buchanan	32	76	\$11,869	667	1,079	\$136,854	2	12	\$469	77	427	\$12,221	778	1,594	\$161,413	42.2%
Butler	20	50	\$8,433	466	818	\$95,679	2	13	\$72	66	347	\$8,881	554	1,228	\$113,065	47.0%
Calhoun	11	24	\$3,440	315	551	\$63,907	2	13	\$85	37	246	\$4,521	365	834	\$71,953	32.8%
Cerro Gordo	94	249	\$39,496	2,243	3,540	\$438,664	5	21	\$1,463	334	1,297	\$47,649	2,676	5,107	\$527,272	48.9%
Chickasaw	11	36	\$5,522	303	544	\$67,581	5	10	\$1,577	66	307	\$11,752	385	897	\$86,432	30.4%
Clayton	16	43	\$5,751	501	824	\$95,507	2	8	\$842	74	381	\$9,857	593	1,256	\$111,957	30.4%
Delaware	28	80	\$12,569	478	796	\$99,668	1	12	\$81	58	302	\$11,138	565	1,190	\$123,456	29.3%
Fayette	53	124	\$21,221	995	1,711	\$206,393	3	14	\$565	131	723	\$21,828	1,182	2,572	\$250,007	50.6%
Floyd	49	124	\$19,914	740	1,254	\$147,053	2	8	\$420	102	529	\$16,187	893	1,915	\$183,574	43.6%
Franklin	23	66	\$10,349	366	668	\$83,924	1	7	\$15	53	331	\$8,984	443	1,072	\$103,272	40.9%
Grundy	9	27	\$3,612	263	468	\$55,265	1	6	\$121	34	207	\$6,532	307	708	\$65,530	36.0%
Hamilton	24	51	\$8,579	487	815	\$97,503	1	4	\$504	78	320	\$11,934	590	1,190	\$118,520	33.7%
Hancock	18	50	\$6,940	266	497	\$59,181	2	4	\$626	35	218	\$8,515	321	769	\$75,262	36.2%
Hardin	27	78	\$11,697	674	1,232	\$139,528	6	14	\$2,616	94	489	\$15,647	801	1,813	\$169,488	50.9%
Howard	13	36	\$4,903	261	420	\$48,957	3	8	\$822	45	195	\$6,079	322	659	\$60,761	27.4%
Humboldt	16	43	\$6,640	332	549	\$71,702	2	7	\$407	37	252	\$6,275	387	851	\$85,024	32.9%
Marshall	111	274	\$42,873	1,997	3,500	\$456,118	11	34	\$2,207	324	1,731	\$62,538	2,443	5,539	\$563,736	57.1%
Mitchell	13	28	\$4,719	261	419	\$48,778	0	0	\$0	39	190	\$6,542	313	637	\$60,039	28.4%
Pocahontas	12	39	\$5,484	279	531	\$62,845	1	8	\$218	43	239	\$6,273	335	817	\$74,820	42.4%
Webster	173	437	\$65,200	2,426	3,913	\$513,233	6	30	\$2,010	370	1,594	\$60,279	2,975	5,974	\$640,722	62.5%
Winnebago	15	37	\$5,831	343	600	\$77,810	1	3	\$352	53	260	\$7,991	412	900	\$91,984	39.8%
Winneshiek	22	57	\$8,524	376	607	\$68,938	1	5	\$34	54	246	\$6,460	453	915	\$83,956	29.8%
Worth	8	30	\$3,976	210	376	\$45,236	1	5	\$15	38	181	\$7,082	257	592	\$56,309	33.9%
Wright	38	108	\$17,262	565	1,010	\$139,970	3	15	\$616	77	461	\$13,069	683	1,594	\$170,917	52.2%
Area Total	1,517	3,813	\$594,873	24,366	40,490	\$5,099,763	118	412	\$28,952	3,705	17,404	\$605,182	29,706	62,119	\$6,328,770	46.2%

Food Assistance Report Series F-1
Report for October, 2017

Food Assistance Participation by Case Type and County

County	FA/FIP			FA/Medical Assistance			FA/hawk-i			FA Only			Total			Participation Rate*
	Households	Recipients	Allotment	Households	Recipients	Allotment	Households	Recipients	Allotment	Households	Recipients	Allotment	Households	Recipients	Allotment	
Area 3 - Eastern																
Cedar	11	22	\$4,612	438	776	\$103,045	4	12	\$1,536	63	369	\$12,020	516	1,179	\$121,213	38.1%
Clinton	174	402	\$68,206	3,157	5,153	\$697,086	6	24	\$1,015	378	1,973	\$63,992	3,715	7,552	\$830,299	64.5%
Des Moines	183	448	\$73,913	2,798	4,687	\$623,741	12	32	\$2,681	382	1,914	\$69,836	3,375	7,081	\$770,171	62.2%
Dubuque	274	708	\$111,827	3,916	6,691	\$892,472	15	59	\$3,413	635	2,831	\$112,217	4,840	10,289	\$1,119,929	53.6%
Henry	41	123	\$19,036	944	1,679	\$218,753	3	11	\$557	93	616	\$15,111	1,081	2,429	\$253,457	48.4%
Jackson	43	107	\$17,730	806	1,401	\$171,866	5	11	\$1,050	88	515	\$13,317	942	2,034	\$203,963	42.7%
Lee	145	377	\$64,301	2,306	3,936	\$517,962	5	14	\$1,009	289	1,503	\$52,239	2,745	5,830	\$635,511	58.9%
Louisa	26	66	\$10,553	377	661	\$82,195	2	7	\$234	48	254	\$8,524	453	988	\$101,506	37.0%
Muscatine	120	342	\$52,339	2,407	4,133	\$547,987	8	29	\$839	346	1,829	\$64,483	2,881	6,333	\$665,648	62.8%
Scott	717	1,802	\$293,424	10,738	18,035	\$2,535,944	31	99	\$8,638	1,836	7,749	\$345,860	13,322	27,685	\$3,183,866	76.2%
Area Total	1,734	4,397	\$715,941	27,887	47,152	\$6,391,051	91	298	\$20,972	4,158	19,553	\$757,599	33,870	71,400	\$7,885,563	62.5%

Food Assistance Participation by Case Type and County

County	FA/FIP			FA/Medical Assistance			FA/hawk-i			FA Only			Total			Participation Rate*
	Households	Recipients	Allotment	Households	Recipients	Allotment	Households	Recipients	Allotment	Households	Recipients	Allotment	Households	Recipients	Allotment	
Area 4 - Cedar Rapids																
Appanoose	32	86	\$14,583	856	1,318	\$161,528	7	14	\$1,779	106	489	\$16,567	1,001	1,907	\$194,457	53.9%
Benton	32	95	\$14,240	830	1,401	\$176,808	3	21	\$738	99	537	\$14,191	964	2,054	\$205,977	46.8%
Davis	13	36	\$6,370	237	404	\$50,631	1	4	\$124	40	198	\$7,839	291	642	\$64,964	22.3%
Iowa	9	19	\$3,116	377	633	\$82,934	3	7	\$635	55	288	\$8,873	444	947	\$95,558	32.5%
Jasper	85	188	\$30,403	1,644	2,782	\$362,066	13	31	\$2,720	244	1,141	\$40,312	1,986	4,142	\$435,501	57.6%
Jefferson	31	83	\$10,992	948	1,444	\$178,044	5	16	\$587	135	498	\$21,160	1,119	2,041	\$210,783	44.9%
Johnson	269	782	\$116,926	4,062	6,836	\$942,313	21	61	\$2,660	766	3,212	\$133,616	5,118	10,891	\$1,195,515	31.5%
Jones	30	71	\$11,697	625	1,142	\$143,733	4	10	\$1,895	80	477	\$12,360	739	1,700	\$169,685	44.8%
Keokuk	15	40	\$6,426	433	736	\$96,392	3	11	\$1,013	45	314	\$6,824	496	1,101	\$110,655	40.8%
Linn	717	1,962	\$304,406	10,719	17,702	\$2,385,609	51	175	\$10,086	1,720	7,373	\$289,796	13,207	27,212	\$2,989,897	67.3%
Mahaska	70	169	\$27,462	1,104	1,828	\$237,686	8	20	\$3,396	204	785	\$33,807	1,386	2,802	\$302,351	47.6%
Monroe	20	48	\$7,718	314	565	\$69,322	2	5	\$441	54	235	\$9,052	390	853	\$86,533	39.8%
Poweshiek	21	50	\$7,726	562	929	\$116,979	0	0	\$0	85	405	\$12,872	668	1,384	\$137,577	38.4%
Tama	21	44	\$7,574	645	1,173	\$148,997	6	14	\$1,964	81	516	\$15,555	753	1,747	\$174,090	48.0%
Van Buren	11	22	\$3,617	329	577	\$67,286	0	0	\$0	36	193	\$6,402	376	792	\$77,305	40.7%
Wapello	191	457	\$74,850	2,562	4,104	\$543,219	12	42	\$3,078	348	1,606	\$60,863	3,113	6,209	\$682,010	55.2%
Washington	21	53	\$7,385	720	1,232	\$156,378	9	25	\$1,348	80	529	\$12,494	830	1,839	\$177,605	42.1%
Area Total	1,588	4,205	\$655,491	26,967	44,806	\$5,919,925	148	456	\$32,464	4,178	18,796	\$702,583	32,881	68,263	\$7,310,463	48.9%

Food Assistance Report Series F-1
Report for October, 2017

Food Assistance Participation by Case Type and County

County	FA/FIP			FA/Medical Assistance			FA/hawk-i			FA Only			Total			Participation Rate*
	Households	Recipients	Allotment	Households	Recipients	Allotment	Households	Recipients	Allotment	Households	Recipients	Allotment	Households	Recipients	Allotment	
Area 5 - Des Moines																
Adair	10	25	\$3,653	281	482	\$56,943	3	9	\$347	42	217	\$7,112	336	733	\$68,055	48.1%
Adams	5	13	\$2,099	145	247	\$31,443	1	3	\$191	22	104	\$2,811	173	367	\$36,544	47.4%
Boone	34	71	\$12,062	878	1,460	\$201,571	4	9	\$914	135	633	\$21,287	1,051	2,173	\$235,834	35.2%
Clarke	20	53	\$8,367	528	891	\$123,364	2	7	\$410	71	443	\$12,126	621	1,394	\$144,267	51.6%
Dallas	43	121	\$17,858	1,332	2,315	\$310,623	10	36	\$1,955	188	1,092	\$37,944	1,573	3,564	\$368,380	38.2%
Decatur	20	46	\$7,589	447	814	\$102,474	1	4	\$352	96	330	\$16,962	564	1,194	\$127,377	43.4%
Lucas	21	42	\$7,525	469	856	\$99,656	3	9	\$849	67	332	\$11,661	560	1,239	\$119,691	60.5%
Madison	6	19	\$2,764	418	702	\$98,736	3	6	\$815	61	355	\$10,540	488	1,082	\$112,855	37.5%
Marion	37	90	\$14,763	1,085	1,876	\$253,749	4	15	\$1,280	153	863	\$23,856	1,279	2,844	\$293,648	47.7%
Polk	1,425	3,872	\$618,164	25,876	43,774	\$6,159,073	144	429	\$39,841	4,705	19,770	\$836,985	32,150	67,845	\$7,654,063	68.4%
Ringgold	4	13	\$1,813	197	334	\$39,251	1	1	\$313	17	120	\$3,828	219	468	\$45,205	38.4%
Story	96	221	\$34,974	2,134	3,414	\$471,973	17	44	\$4,246	543	1,632	\$89,627	2,790	5,311	\$600,820	20.2%
Union	37	97	\$14,388	740	1,262	\$158,100	3	11	\$880	97	461	\$19,603	877	1,831	\$192,971	53.6%
Warren	45	114	\$20,072	1,196	2,013	\$275,533	4	22	\$539	189	1,025	\$33,359	1,434	3,174	\$329,503	43.5%
Wayne	16	36	\$7,147	307	532	\$71,443	2	9	\$660	34	228	\$5,537	359	805	\$84,787	47.4%
Area Total	1,819	4,833	\$773,238	36,033	60,972	\$8,453,932	202	614	\$53,592	6,420	27,605	\$1,133,238	44,474	94,024	\$10,414,000	54.3%
State Total	8,000	20,716	\$3,282,496	140,533	236,648	\$31,421,024	677	2,218	\$165,160	22,490	102,937	\$3,881,050	171,700	362,519	\$38,749,730	52.2%

* Participation Rate is the percentage of individuals at or below 160% FPL who are receiving Food Assistance in a given area (County/SA/State). It is calculated by dividing the number of Food Assistance Recipients in an area (County/SA/State) by the number of persons in that area at or below 160% of the Federal Poverty Level (as counted in the 2015 American Community Survey).