

Status of the Iowa Workforce and Economy

Upcoming 2017 News Release Schedule

Reference Month	Statewide News Release	Local Area News Release
Jan	Mar 13	Mar 13
Feb	Mar 24	Mar 28
Mar	Apr 21	Apr 25
Apr	May 19	May 23
May	Jun 16	Jun 20
Jun	Jul 21	Jul 25
Jul	Aug 18	Aug 22
Aug	Sep 15	Sep 19
Sep	Oct 20	Oct 24
Oct	Nov 17	Nov 21
Nov	Dec 22	Dec 27
Dec	Jan 23	Jan 23

Iowa Nonfarm Employment

		Average Employment	Percent Change from Prior Qtr
2015	Qtr 3	1,561,400	0.1%
	Qtr 4	1,564,200	0.2%
2016	Qtr 1	1,570,100	0.4%
	Qtr 2	1,568,600	-0.1%
	Qtr 3	1,572,600	0.3%
	Qtr 4	1,571,700	-0.1%
2017	Qtr 1	1,579,600	0.5%
	Qtr 2	1,581,600	0.1%

Iowa Workforce Development

Information Prepared by the
Labor Market Information
Division

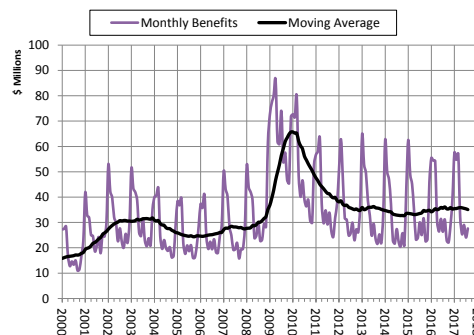
1000 East Grand Avenue
Des Moines, Iowa 50319-0209

Phone: 515-242-5862
Fax: 515-281-8203

Donna Burkett, Bureau Chief
Iowa Workforce Development

- Iowa's unemployment rate increased to 3.3 percent in August. The state's jobless rate was 3.7 percent one year ago.
- The number of unemployed Iowans rose to 55,200 in August from 54,500 in July.
- The U.S. unemployment rate increased to 4.4 percent in August from 4.3 percent in July.

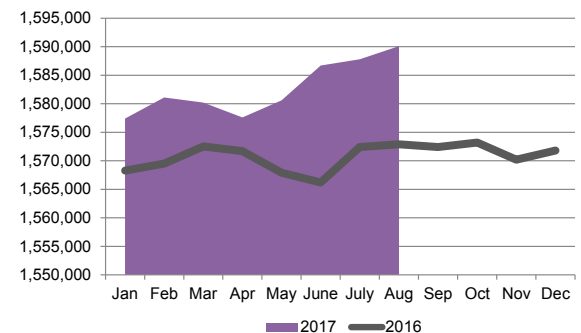
Unemployment Insurance Benefits Paid Regular State UI Only



Source: Iowa Workforce Development

- The monthly UI benefit payout averaged \$35.1 million for the twelve months ending August 2017. This is 2.9 percent lower than the same period for 2016.
- Weekly wages for Iowa's production and non-supervisory workers averaged \$910.35 a week in August. The average weekly wage was \$120.53 less than last year and primarily due to a drop in overtime hours worked for construction workers.
- U.S. total nonfarm payroll added 156,000 jobs in August. Hiring was greatest in manufacturing, construction, and professional and business services.

Total Nonfarm Employment - Iowa Jan 2016 - August 2017



- Total nonfarm employment increased for the fourth-consecutive month (+2,300) and is up 17,200 jobs versus last August.
- Healthcare and social assistance gained 1,900 jobs in August and is now 9,300 jobs higher than one year ago (+4.9 percent).
- Construction lost jobs for the fifth month in a row. This month's loss of 900 jobs leaves this sector down 5,900 jobs annually.
- Leisure and hospitality seasonally pared jobs (-1,500) in August. The majority of the drop occurred in seasonal recreation industries.
- Financial activities lost jobs for the first time since last August (-1,300). Despite the drop, this sector is up 3,400 jobs annually.

Iowa and U.S. Unemployment Rates—2017

