

# IOWA ACUTE DISEASE MONTHLY REPORT

January 2017

The Center for Acute Disease Epidemiology



# TABLE OF CONTENTS

Introduction .....	1
Iowa County Boundaries and Population .....	2
December Case Counts A-J .....	3
December Case Counts K-W .....	4
12 Month Case Counts – Counties A-H .....	5
12 Month Case Counts – Counties I-W .....	6
Campylobacteriosis Summary .....	7
Cryptosporidiosis Summary .....	8
E. coli (STEC) Summary .....	9
Mumps Summary .....	10
Pertussis Summary .....	11
Salmonellosis Summary .....	12
Shigellosis Summary .....	13
Center for Acute Disease Epidemiology (CADE) Staff .....	14

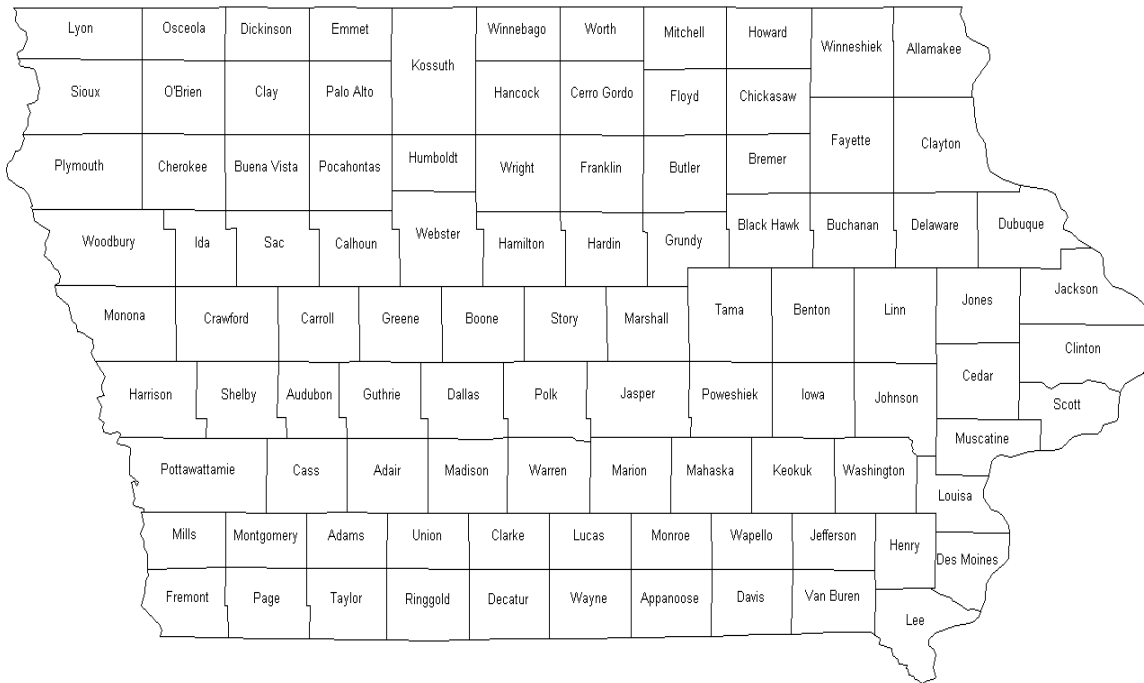
# INTRODUCTION

The Center for Acute Disease Epidemiology (CADE) uses the most recent Council of State and Territorial Epidemiologists (CSTE) / Centers for Disease Control and Prevention (CDC) case definitions found on the [National Notifiable Disease Surveillance System \(NNDSS\)](#) page. These definitions are used to classify the case as confirmed, probable, suspect, not a case, or awaiting more information. **Only confirmed and probable cases meeting the CSTE/CDC case definitions are included in this report.**

Disease case counts were compiled from the Iowa Disease Surveillance System (IDSS). IDSS data updated frequently, therefore case counts may differ slightly for the same time period if updates are made after this report is generated.

Rates were calculated using the 2010 census population for the State of Iowa.

# IOWA COUNTY BOUNDARIES



POPULATION	IOWA				3,046,355
	2010 CENSUS				
ADAIR	7,472	FLOYD	16,092	MONONA	9,121
ADAMS	3,894	FRANKLIN	10,548	MONROE	8,012
ALLAMAKEE	14,169	FREMONT	7,080	MONTGOMERY	10,424
APPANOOSE	12,692	GREENE	9,139	MUSCATINE	42,836
AUDUBON	5,873	GRUNDY	12,314	O'BRIEN	14,044
BENTON	25,699	GUTHRIE	10,687	OSCEOLA	6,211
BLACK HAWK	132,546	HAMILTON	15,312	PAGE	15,713
BOONE	26,364	HANCOCK	11,094	PALO ALTO	9,185
BREMER	24,624	HARDIN	17,441	PLYMOUTH	24,957
BUCHANAN	20,976	HARRISON	14,431	POCAHONTAS	7,154
BUENA VISTA	20,567	HENRY	20,222	POLK	451,677
BUTLER	15,021	HOWARD	9,526	POTTAWATTA	92,728
CALHOUN	9,926	HUMBOLDT	9,688	POWESHIEK	18,601
CARROLL	20,598	IDA	7,141	RINGGOLD	5,072
CASS	13,598	IOWA	16,330	SAC	10,071
CEDAR	18,393	JACKSON	19,587	SCOTT	170,385
CERRO GORDO	43,575	JASPER	36,641	SHELBY	11,961
CHEROKEE	11,945	JEFFERSON	16,810	SIOUX	34,547
CHICKASAW	12,321	JOHNSON	139,155	STORY	92,406
CLARKE	9,325	JONES	20,611	TAMA	17,576
CLAY	16,491	KEOKUK	10,329	TAYLOR	6,161
CLAYTON	17,773	KOSSUTH	15,321	UNION	12,583
CLINTON	48,420	LEE	35,682	VAN BUREN	7,436
CRAWFORD	17,434	LINN	216,111	WAPELLO	35,391
DALLAS	74,641	LOUISA	11,282	WARREN	47,336
DAVIS	8,791	LUCAS	8,746	WASHINGTON	22,015
DECATUR	8,136	LYON	11,712	WAYNE	6,402
DELAWARE	17,534	MADISON	15,448	WEBSTER	37,044
DES MOINES	40,480	MAHASKA	22,417	WINNEBAGO	10,554
DICKINSON	16,955	MARION	33,252	WINNESHIEK	20,994
DUBUQUE	95,697	MARSHALL	40,994	WOODBURY	102,130
EMMET	9,996	MILLS	14,896	WORTH	7,541
FAYETTE	20,502	MITCHELL	10,709	WRIGHT	12,972

## Case Counts by County for the Month of December 2016 A-J Confirmed and Probable

Counties with no reports of acute diseases may not be included in this table

	Campylobacter	Cryptosporidium	E. coli (STEC)	HUS	Giardia	Hepatitis A	Hepatitis B chronic	Legionella	Lyme	Malaria	Mumps	Pertussis	Salmonella	Shigella	Total
APPANOOSE	-	-	-	-	-	-	-	-	-	-	-	-	1	-	1
AUDUBON	1	-	-	-	-	-	-	-	-	-	-	-	-	-	1
BENTON	1	-	-	-	-	-	-	-	-	-	-	-	-	-	1
BLACK HAWK	3	-	-	-	-	-	-	-	-	-	1	-	1	-	5
BOONE	2	-	-	-	-	-	-	-	-	-	1	-	-	-	3
BREMER	1	-	1	-	-	-	-	-	-	-	-	-	-	-	2
BUCHANAN	1	-	-	-	-	-	-	-	1	-	-	-	-	-	2
BUENA VISTA	-	-	-	-	-	-	-	-	-	-	-	-	1	-	1
CARROLL	1	-	-	-	-	-	-	-	-	-	-	-	1	-	2
CASS	-	-	-	-	-	-	-	-	-	-	-	1	-	-	1
CEDAR	2	-	-	-	-	-	-	-	-	-	-	-	-	-	2
CERRO GORDO	1	-	-	-	-	-	-	-	-	-	-	-	-	-	1
CLINTON	1	-	-	-	-	-	-	-	-	-	-	-	1	-	2
CRAWFORD	1	-	-	-	-	-	-	-	-	-	-	-	-	-	1
DAVIS	1	1	-	-	-	-	-	-	-	-	-	-	-	-	2
DELAWARE	1	-	-	-	-	-	-	-	-	-	1	-	-	-	2
DICKINSON	1	-	-	-	-	-	-	-	-	-	-	-	-	-	1
DUBUQUE	6	-	-	-	-	-	-	-	-	-	16	-	3	-	25
FREMONT	1	-	-	-	-	-	-	-	-	-	-	-	-	-	1
GREENE	1	-	-	-	-	-	-	-	-	-	-	-	-	-	1
GUTHRIE	2	-	-	-	-	-	-	-	-	-	-	-	-	-	2
HAMILTON	-	-	-	-	-	-	-	-	-	-	-	-	2	1	3
HANCOCK	1	-	-	-	-	-	-	-	-	-	-	-	-	-	1
JASPER	-	-	-	-	-	-	-	-	-	-	-	-	1	-	1
JEFFERSON	-	1	-	-	-	-	-	-	-	-	-	-	-	-	1
JOHNSON	2	-	1	-	1	-	-	-	-	-	1	-	-	1	6

## Case Counts by County for the Month of December 2016 K-W Confirmed and Probable

Counties with no reports of acute diseases may not be included in this table

	Campylobacter	Cryptosporidium	E. coli (STEC)	HUS	Giardia	Hepatitis A	Hepatitis B chronic	Legionella	Lyme	Malaria	Mumps	Pertussis	Salmonella	Shigella	Total
KOSSUTH	-	-	-	-	1	-	-	-	-	-	-	-	-	-	1
LINN	4	-	-	-	-	-	-	-	-	1	-	-	4	-	9
LOUISA	1	-	-	-	-	-	-	-	-	-	-	-	-	-	1
LUCAS	-	-	-	-	-	-	-	-	-	-	-	4	-	-	4
LYON	1	-	-	-	-	-	-	-	-	-	-	-	-	-	1
MADISON	1	1	-	-	-	-	-	-	-	-	-	-	-	-	2
MAHASKA	1	-	-	-	-	-	-	-	-	-	-	-	-	-	1
MARION	1	-	-	-	-	-	-	-	-	-	-	-	-	-	1
MARSHALL	-	-	-	-	-	-	-	-	-	-	-	-	1	-	1
MONONA	-	-	-	1	-	-	-	-	-	-	-	-	-	-	1
MUSCATINE	-	-	-	-	-	-	-	-	-	-	-	-	2	1	3
PLYMOUTH	2	-	-	-	-	-	-	-	-	-	-	-	-	-	2
POCAHONTAS	-	-	-	-	1	-	-	-	-	-	-	-	-	-	1
POLK	4	-	1	-	6	1	2	-	1	-	2	-	-	3	20
SAC	2	-	-	-	-	-	-	-	-	-	-	-	-	-	2
SCOTT	2	-	-	-	-	-	5	1	-	-	-	-	1	-	9
SIOUX	1	-	-	-	-	-	-	-	-	-	-	-	2	-	3
STORY	2	-	-	-	-	-	-	-	-	-	-	-	-	-	2
TAMA	1	-	-	-	-	-	-	-	-	-	-	-	-	-	1
TAYLOR	-	-	-	-	-	-	-	-	-	-	-	-	1	-	1
UNION	1	-	-	-	-	-	-	-	-	-	-	-	-	-	1
WAPELLO	1	1	-	-	-	-	-	-	-	-	-	-	-	-	2
WARREN	-	2	-	-	-	-	-	-	-	-	-	3	-	-	5
WEBSTER	-	1	-	-	-	-	-	-	-	-	-	-	-	6	7
WOODBURY	-	2	-	-	-	-	-	-	-	-	-	-	-	-	2
WORTH	2	-	-	-	-	-	-	-	-	-	-	-	-	-	2
TOTAL	58	9	3	1	9	1	7	1	2	1	22	8	22	12	156

# 12 Month Case Counts by County A-H

January 1, 2016 – December, 2016

Confirmed and Probable Cases

	Anaplasmosis	Babesiosis	Brucellosis	Campylobacter	Chikungunya	Cholera	Cryptosporidium	Cyclospora	Dengue	E. coli (STEC)	Ehrlichioses	Ehrlichioses/Anaplasmosis undetermined	HUS	Giardia	Hansen	Hepatitis A	Hepatitis E	Hepatitis B acute	Hepatitis B chronic	Hepatitis D	Legionella	Listeria	Lyme	Malaria	Mumps	N. meningitidis	Pertussis	Q Fever Acute	Q Fever Chronic	Rocky Mountain spotted fever	Salmonella	Shigella	Tetanus	Tularemia	Typhoid fever	VISA	West Nile Virus	Total	
ADAIR	-	-	-	2	-	-	1	-	-	1	-	-	-	1	-	-	-	-	-	-	-	-	-	-	-	1	-	-	-	-	-	-	-	-	-	-	-	-	6
ADAMS	-	-	-	1	-	-	-	-	-	-	-	-	-	-	-	-	-	-	-	-	-	-	-	-	-	-	-	-	-	-	-	-	-	-	-	-	-	-	4
ALLAMAKEE	-	-	-	6	-	-	4	-	-	1	-	-	-	2	-	-	-	-	-	-	-	-	6	-	-	-	1	-	-	-	-	-	-	-	-	-	-	-	23
APPANOOSE	-	-	-	2	-	-	2	-	-	-	-	-	-	1	-	-	-	-	-	-	-	-	-	-	-	-	-	-	-	-	-	-	-	-	-	-	-	9	
AUDUBON	-	-	-	4	-	-	-	-	-	-	-	-	-	-	-	-	-	-	-	-	-	-	-	-	-	-	1	-	-	-	-	-	-	-	-	-	-	6	
BENTON	-	-	-	13	-	-	4	-	-	3	-	-	-	-	-	-	-	-	1	-	1	-	2	-	1	-	-	-	-	-	-	-	-	-	-	-	-	32	
BLACK HAWK	-	-	-	22	-	-	5	-	-	2	-	-	1	9	-	-	-	1	10	1	1	1	1	2	208	-	5	-	-	3	35	3	-	-	-	-	-	-	309
BOONE	-	-	-	8	-	-	2	-	-	1	-	-	-	1	-	-	-	-	-	-	-	-	-	-	9	-	-	-	-	-	-	-	-	-	-	-	1	27	
BREMER	-	-	-	3	-	-	1	-	-	2	-	-	-	1	-	-	-	-	-	-	-	-	-	8	-	-	-	-	-	-	-	-	-	-	-	-	-	26	
BUCHANAN	1	-	-	9	-	-	-	-	-	5	-	-	-	1	-	-	-	-	-	-	-	-	4	-	7	-	1	-	-	-	-	-	-	-	-	-	-	38	
BUENA VISTA	-	-	-	10	-	-	2	-	-	-	-	-	-	-	-	-	-	-	3	-	-	-	-	-	-	-	-	-	-	-	-	-	-	-	-	-	-	19	
BUTLER	-	-	-	6	-	-	1	-	-	3	-	-	-	1	-	-	-	-	1	-	-	-	-	-	2	-	1	-	-	-	-	-	-	-	-	-	-	19	
CALHOUN	-	-	-	10	-	-	2	-	-	2	-	-	-	1	-	-	-	-	-	-	-	-	-	-	1	-	-	-	-	-	-	-	-	-	-	-	-	17	
CARROLL	-	1	-	10	-	-	9	-	1	7	-	-	-	1	-	-	-	-	-	-	-	-	-	-	2	-	1	-	-	12	-	-	-	-	-	-	-	44	
CASS	-	-	-	4	-	-	3	-	-	-	-	-	-	-	-	-	-	-	-	-	-	-	-	-	-	-	2	-	-	-	-	-	-	-	-	-	-	10	
CEDAR	-	-	-	9	-	-	1	-	-	-	-	-	-	-	-	-	-	-	-	-	-	-	5	-	2	-	1	-	-	-	-	-	-	-	-	-	-	24	
CERRO GORDO	-	-	-	15	-	-	101	-	-	1	-	-	-	4	-	-	-	-	2	-	1	-	-	-	5	-	-	-	-	-	-	-	-	-	-	-	-	134	
CHEROKEE	-	-	-	3	-	-	1	-	-	1	-	-	-	-	-	-	-	-	1	-	-	-	-	-	-	-	-	-	-	-	-	-	-	-	-	-	-	7	
CHICKASAW	-	-	-	3	-	-	2	-	-	2	-	-	-	-	-	-	-	-	-	-	-	-	2	-	2	-	-	-	-	-	-	-	-	-	-	-	-	33	
CLARKE	-	-	-	6	-	-	6	-	-	-	-	-	-	1	-	-	-	-	-	-	-	-	-	-	-	-	-	-	-	-	-	-	-	-	-	-	-	21	
CLAY	-	-	-	1	-	-	-	-	-	2	-	-	-	2	-	-	-	-	-	-	-	-	-	-	-	-	-	-	-	-	-	-	-	-	-	-	-	10	
CLAYTON	1	-	-	13	-	-	13	-	-	4	-	1	-	5	-	-	-	-	-	-	-	-	12	-	5	-	3	-	-	-	-	-	-	-	-	-	-	62	
CLINTON	-	-	-	8	-	-	1	-	-	3	-	-	-	-	-	-	-	-	1	-	1	-	4	-	1	-	3	-	-	-	-	-	-	-	-	-	2	39	
CRAWFORD	-	-	-	6	-	-	3	-	-	11	-	-	-	-	-	-	-	-	-	-	-	-	-	1	-	-	-	-	-	-	-	-	-	-	-	-	-	32	
DALLAS	-	-	-	30	-	-	11	4	1	10	-	-	-	7	-	-	-	-	1	-	2	-	2	-	-	-	4	-	-	1	16	9	-	-	-	-	-	98	
DAVIS	-	-	-	5	-	-	2	-	-	1	-	-	-	-	-	-	-	-	-	-	-	1	-	-	-	-	-	-	-	-	-	-	-	-	-	-	-	9	
DECATUR	-	-	-	4	-	-	-	-	-	2	-	-	-	-	-	-	-	-	1	-	-	-	-	-	1	-	-	-	-	-	-	-	-	-	-	-	-	9	
DELAWARE	-	-	-	20	-	-	5	-	-	4	-	-	-	2	-	1	-	-	-	-	-	-	5	-	23	-	1	-	-	-	-	-	-	-	-	-	-	-	64
DES MOINES	-	-	-	9	-	-	8	-	-	-	-	-	-	1	-	-	-	1	-	-	-	-	1	-	-	-	-	-	-	-	-	-	-	-	-	-	1	30	
DICKINSON	-	-	-	7	-	-	5	-	-	-	-	-	-	3	-	-	-	-	1	-	-	-	-	1	-	-	-	-	-	-	-	-	-	-	-	-	-	22	
DUBUQUE	4	-	-	66	-	-	59	-	-	26	2	1	-	21	-	-	-	-	5	-	1	1	22	-	94	-	-	1	-	1	35	206	-	-	-	-	-	545	
EMMET	-	-	-	4	-	-	1	-	-	-	-	-	-	1	-	1	-	-	-	-	-	-	-	-	-	-	-	-	-	-	-	-	-	-	-	-	-	11	
FAYETTE	1	-	-	10	-	-	6	-	-	-	-	-	-	1	-	-	-	-	-	-	1	-	4	-	5	-	-	-	-	-	-	-	-	-	-	-	-	31	
FLOYD	-	-	-	8	-	-	4	-	-	2	-	-	-	-	-	-	-	-	-	-	-	-	-	-	2	-	-	-	-	-	-	-	-	-	-	-	-	28	
FRANKLIN	-	-	-	6	-	-	-	-	-	3	-	-	-	-	-	-	-	-	-	-	-	-	-	-	-	1	-	-	-	-	-	-	-	-	-	-	-	11	
FREMONT	-	-	-	5	-	-	-	-	-	-	-	-	-	-	-	-	-	-	-	-	-	-	-	-	-	-	-	-	-	-	-	-	-	-	-	-	1	9	
GREENE	-	-	-	7	-	-	-	-	-	1	-	-	-	1	-	-	-	-	-	-	-	-	-	-	-	-	-	-	-	-	-	-	-	-	-	-	-	13	
GRUNDY	-	-	-	4	-	-	-	-	-	2	-	-	-	-	-	-	-	-	-	-	-	-	-	-	6	-	-	-	-	-	-	-	-	-	-	-	-	16	
GUTHRIE	-	-	-	9	-	-	1	-	-	2	-	-	-	3	-	-	-	-	-	-	-	-	-	-	-	-	-	-	-	-	-	-	-	-	-	-	-	18	
HAMILTON	-	-	-	5	-	-	3	-	1	1	-	-	-	-	-	-	-	-	-	-	-	-	-	-	-	1	-	-	-	-	-	-	-	-	-	-	-	18	
HANCOCK	-	-	-	7	-	-	2	-	-	-	-	-	-	-	-	-	-	-	-	-	-	-	-	-	2	-	-	-	-	-	-	-	-	-	-	-	-	13	
HARDIN	-	-	-	11	-	-	3	-	1	1	-	-	-	1	1	-	-	1	-	-	-	1	1	10	-	-	-	-	-	-	-	-	-	-	-	-	-	39	
HARRISON	-	-	-	8	-	-	2	-	-	2	-	-	-	-	-	-	-	-	1	-	-	-	-	-	1	1	-	-	-	-	-	-	-	-	-	-	-	23	
HENRY	-	-	-	3	-	-	7	-	-	2	-	-	-	1	-	-	-	-	-	-	-	-	-	-	-	-	-	-	-	-	-	-	-	-	-	-	1	20	
HOWARD	-	-	-	6	-	-	1	-	-	1	-	-	-	-	-	-	-	-	-	-	-	-	-	-	-	-	-	-	-	-	-	-	-	-	-	-	-	11	
HUMBOLDT	-	-	-	8	-	-	3	-	-	3	-	-	-	-	-	-	-	-	-	-	-	-	-	-	-	-	-	-	-	-	-	-	-	-	-	-	1	18	

# 12 Month Case Counts by County I-W

January 1, 2016 – December 31, 2016

Confirmed and Probable Cases

	Anaplasmosis	Babesiosis	Brucellosis	Campylobacter	Chikungunya	Cholera	Cryptosporidium	Cyclospora	Dengue	E. coli (STEC)	Ehrlichioses	Ehrlichioses/Anaplasmosis undetermined	HUS	Giardia	Hansen	He patitis A	He patitis E	He patitis B acute	He patitis B chronic	He patitis D	Legionella	Listeria	Lyme	Malaria	Mumps	N. meningitidis	Pertussis	Q Fever Acute	Q Fever Chronic	Rocky Mountain spotted fever	Salmonella	Shigella	Tetanus	Tularemia	Typhoid fever	VISA	West Nile Virus	Total	
IDA	-	-	-	3	-	-	-	-	-	-	-	-	-	-	-	-	-	-	-	-	-	-	-	-	-	-	-	-	-	-	-	-	-	-	-	-	-	-	5
IOWA	-	-	-	7	-	-	2	-	-	1	-	-	-	3	-	-	-	-	-	-	-	-	3	-	1	-	-	-	-	-	-	32	-	-	-	-	-	-	49
JACKSON	-	-	-	15	-	-	5	-	-	5	-	-	1	-	-	-	-	-	-	-	-	-	5	-	1	-	-	-	-	-	5	5	-	-	-	-	-	-	43
JASPER	-	-	-	10	-	-	8	-	-	3	-	-	4	-	-	-	-	-	-	-	-	-	1	-	-	-	-	-	-	-	-	-	-	-	-	-	-	-	36
JEFFERSON	1	-	-	-	-	-	5	-	-	2	-	-	1	-	1	-	-	-	-	-	-	-	2	-	-	-	-	-	-	-	-	-	-	-	-	-	-	-	17
JOHNSON	-	-	-	35	-	-	8	-	-	14	1	-	10	-	-	-	-	-	24	-	1	-	36	3	119	-	10	-	-	1	47	21	-	-	-	1	-	2	333
JONES	-	-	-	11	-	-	11	-	-	7	-	-	-	-	-	-	-	-	1	-	1	-	1	-	-	-	-	-	-	3	2	-	-	-	-	-	-	37	
KEOKUK	-	-	-	8	-	-	2	-	-	1	-	-	-	-	-	-	-	-	-	-	-	-	1	-	-	-	-	-	-	2	-	-	-	-	-	-	-	14	
KOSSUTH	-	-	-	9	-	-	3	-	-	1	-	-	-	3	-	-	-	-	-	-	-	-	1	-	2	-	-	-	-	1	-	-	-	-	-	-	-	20	
LEE	-	-	-	3	-	-	1	-	-	-	1	-	1	-	1	-	-	-	-	-	-	-	-	-	-	-	1	-	-	-	10	-	-	-	-	-	-	18	
LINN	-	-	-	63	1	-	37	4	-	22	-	-	13	-	4	-	-	-	21	1	2	-	39	3	22	-	1	-	1	55	5	-	-	-	-	-	1	295	
LOUISA	-	-	-	5	-	-	1	-	-	-	-	-	-	-	-	-	-	-	-	-	-	-	-	-	-	-	-	-	-	1	-	-	-	-	-	-	-	7	
LUCAS	-	-	-	5	-	-	4	-	-	2	-	-	-	-	-	-	-	-	1	-	-	-	-	-	1	-	8	-	-	1	-	-	-	-	-	-	-	22	
LYON	-	-	-	17	-	-	19	-	-	2	-	-	3	-	-	-	-	-	-	-	-	-	-	-	-	-	-	-	-	3	1	-	-	-	-	3	48		
MADISON	-	-	-	5	-	-	9	-	-	1	-	-	4	-	-	-	-	-	-	-	-	-	-	-	4	-	1	1	-	6	-	-	-	-	-	-	-	31	
MAHASKA	-	-	-	8	-	-	7	-	-	2	-	-	-	-	-	-	-	1	-	-	-	-	-	-	-	-	-	-	5	-	-	-	-	-	-	-	24		
MARION	-	-	-	9	-	-	6	-	-	1	-	-	3	-	-	-	-	-	-	-	-	-	3	-	4	-	-	-	-	8	1	-	-	-	-	-	-	35	
MARSHALL	-	-	-	9	-	-	1	-	-	6	-	-	1	-	-	-	-	-	-	-	-	-	1	1	1	-	1	-	5	1	-	-	-	-	-	-	-	35	
MILLS	-	-	-	7	-	-	-	-	-	-	-	-	-	-	-	-	-	-	1	-	-	-	-	-	-	-	-	-	-	3	17	-	-	-	-	-	-	28	
MITCHELL	-	-	-	6	-	-	13	-	-	5	-	-	4	-	-	-	-	-	-	-	-	-	-	-	5	-	-	-	4	-	-	-	-	-	-	-	-	37	
MONONA	-	-	-	9	-	-	4	-	-	-	-	1	1	-	-	-	-	-	-	-	-	-	-	-	-	-	-	-	-	-	-	-	-	-	-	1	16		
MONROE	-	-	-	3	-	-	5	-	-	2	-	-	3	-	-	-	-	-	-	-	-	-	-	-	-	-	7	-	3	-	-	-	-	-	-	-	23		
MONTGOMERY	-	-	-	-	-	-	-	-	-	1	-	-	-	-	-	-	-	-	-	-	-	-	-	-	-	-	1	-	-	-	-	-	-	-	-	-	-	2	
MUSCATINE	-	-	-	4	-	-	4	-	-	2	-	-	1	-	-	-	-	-	1	-	1	-	6	-	11	-	3	-	-	18	4	-	-	-	-	-	-	55	
O'BRIEN	-	-	-	8	-	-	2	-	-	4	-	-	2	-	-	-	-	-	-	-	-	-	-	-	2	-	-	-	2	-	-	-	-	-	-	-	2	22	
OSCEOLA	-	-	-	2	-	-	-	-	-	-	-	-	2	-	-	-	-	-	-	-	-	-	1	-	-	-	-	-	-	3	-	-	-	-	-	-	-	8	
PAGE	-	-	-	4	-	-	4	-	-	4	-	-	3	-	-	-	-	-	-	-	-	-	-	-	-	-	-	-	1	-	-	-	-	-	-	-	16		
PALO ALTO	-	-	-	4	-	-	2	-	-	1	-	-	-	-	-	-	-	-	-	-	-	-	-	1	-	-	-	-	-	-	2	-	-	-	-	-	-	10	
PLYMOUTH	-	-	-	11	-	-	22	-	-	2	-	-	2	-	-	-	-	-	-	-	-	-	-	5	-	-	-	-	-	12	-	-	-	-	-	-	2	56	
POCAHONTAS	-	-	-	6	-	-	1	-	-	1	-	-	1	-	-	-	-	-	-	-	-	-	-	-	-	-	1	-	-	-	-	-	-	-	-	-	-	12	
POLK	-	-	-	124	-	-	125	6	-	29	-	1	44	-	2	2	4	91	-	5	-	14	6	20	-	31	1	-	99	45	-	1	-	-	-	-	650		
POTTAWATTAMIE	-	-	-	20	-	-	7	-	-	7	-	1	1	-	-	-	1	6	-	1	-	-	-	1	-	3	-	2	10	10	-	-	-	-	-	2	72		
POWESHIEK	-	-	-	3	-	-	1	-	-	-	-	-	1	-	-	-	-	-	-	-	-	-	1	-	-	-	-	-	2	-	-	-	-	-	-	-	8		
RINGGOLD	-	-	-	-	-	-	2	-	-	-	-	-	-	-	-	-	-	-	-	-	-	-	-	-	-	3	-	-	1	-	-	-	-	-	-	-	-	6	
SAC	-	-	-	12	-	-	2	-	-	1	-	-	4	-	-	-	-	1	-	-	-	-	-	-	-	-	-	-	5	-	-	-	-	-	-	-	25		
SCOTT	-	-	-	24	1	-	7	-	1	5	-	-	7	-	-	1	1	20	-	11	-	7	3	10	1	19	-	-	30	29	-	-	-	-	1	1	179		
SHELBY	-	-	-	8	-	-	3	-	-	1	-	-	-	-	-	-	-	-	-	-	-	-	-	7	-	-	-	2	-	-	-	-	-	-	-	-	1	22	
SIoux	-	-	-	25	-	-	26	-	1	3	-	-	12	-	-	-	-	1	-	1	-	-	-	1	-	-	-	-	19	1	-	-	-	-	-	-	11	101	
STORY	-	-	1	13	-	-	10	-	-	15	-	-	6	-	3	-	-	9	-	1	-	5	-	71	-	-	1	-	10	1	-	1	-	-	-	-	147		
TAMA	-	-	-	6	-	-	2	-	-	3	-	-	2	-	-	-	-	-	-	-	-	-	-	2	-	3	-	-	7	1	-	-	-	-	-	-	1	27	
TAYLOR	-	-	-	2	-	-	-	-	-	-	-	-	-	-	-	-	-	-	-	-	-	-	-	-	-	-	-	-	5	-	-	-	-	-	-	-	7		
UNION	-	-	-	5	-	-	2	-	-	3	-	-	1	-	-	-	-	-	-	-	-	-	-	-	-	-	-	-	1	1	-	-	-	-	-	-	13		
VAN BUREN	-	-	-	3	-	-	2	-	-	-	-	-	1	-	-	-	-	-	-	-	-	-	-	-	-	-	-	-	-	-	-	-	-	-	-	-	-	6	
WAPELLO	-	-	-	21	-	-	14	-	-	1	-	-	-	-	-	-	-	5	-	-	-	2	-	-	-	-	-	2	-	-	-	-	-	-	-	-	45		
WARREN	-	-	-	15	-	1	9	-	-	4	-	-	5	-	-	-	-	1	-	-	-	4	-	17	-	16	-	1	-	18	6	-	-	-	-	-	-	97	
WASHINGTON	-	-	-	14	-	-	1	-	-	2	-	-	-	-	-	-	-	-	-	-	-	5	-	1	-	-	-	3	3	-	-	-	-	-	-	-	-	29	
WAYNE	-	-	-	1	-	-	-	-	-	-	-	-	-	-	-	-	-	-	-	-	-	1	-	-	-	1	-	1	-	-	-	-	-	-	-	-	-	4	
WEBSTER	-	-	-	12	-	-	4	-	-	-	-	-	4	-	1	-	-	-	-	-	-	1	-	-	-	-	-	6	7	-	-	-	-	-	-	-	35		
WINNEBAGO	-	-	-	5	-	-	1	-	-	-	-	-	-	-	-	-	-	-	-	-	-	-	-	-	-	-	-	1	-	-	-	-	-	-	-	-	9		
WINNESHIEK	-	-	-	9	-	-	9	-	-	3	-	-	3	-	-	-	-	-	-	-	-	7	1	7	-	-	-	3	-	-	-	-	-	-	-	-	-	42	
WOODBURY	-	-	-	17	-	-	34	-	-	8	-	-	4	-	-	-	-	14	-	-	-	-	-	-	1	-	2	-	15	10	-	-	-	-	-	2	107		
WORTH	-	-	-	5	-	-	6	-	-	1	-	-	-	-	-	-	-	-	-	-	-	-	-	-	-	-	-	2	-	-	-	-	-	-	-	-	15		
WRIGHT	-	-	-	5	-	-	-	-	-	1	-	-	2	-	-	-	-	-	-	-	-	-	-	-	-	-	-	-	-	-	-	-	-	-	-	-	-	10	
TOTAL	8	1	1	1051	2	1	740	14	6	293	4	2	4	238	1	15	3	10	237	2	33	3	218	20	719	2	136	6	1	11	762	429	1	3	2	1	37	5017	



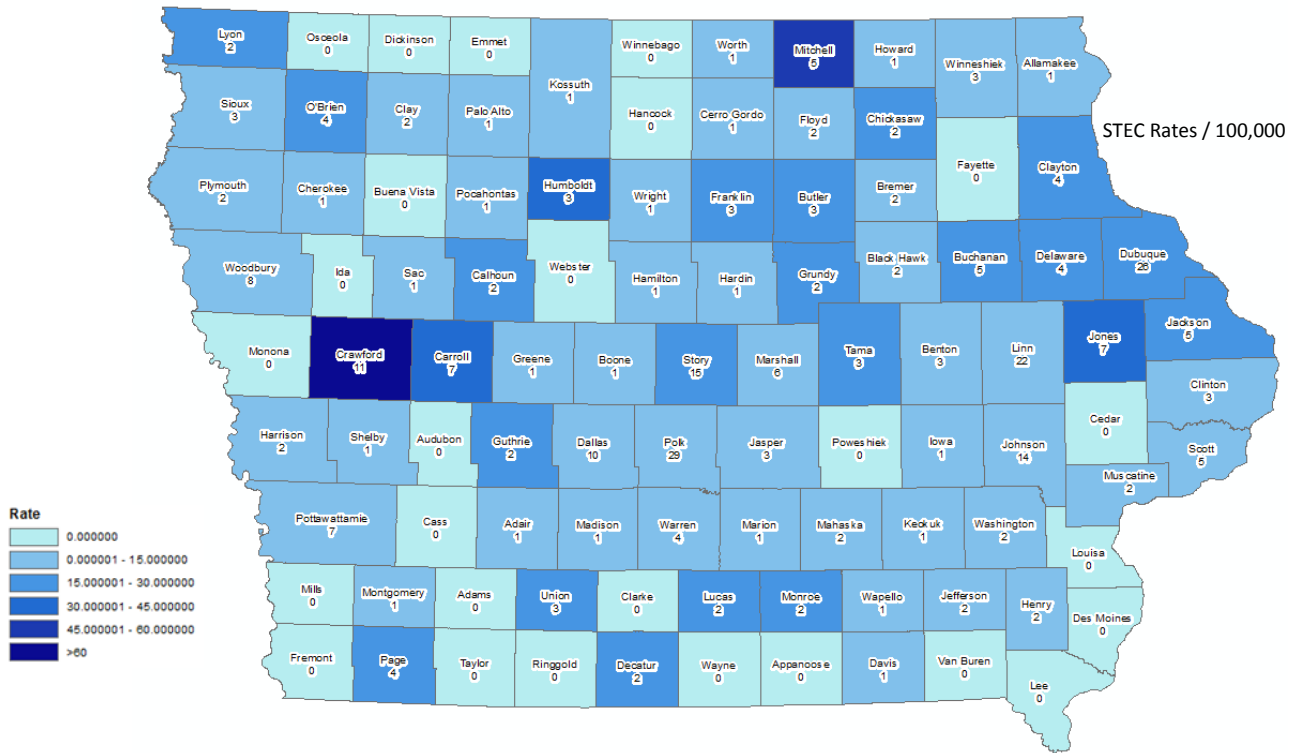




# E. coli (STEC) Summary

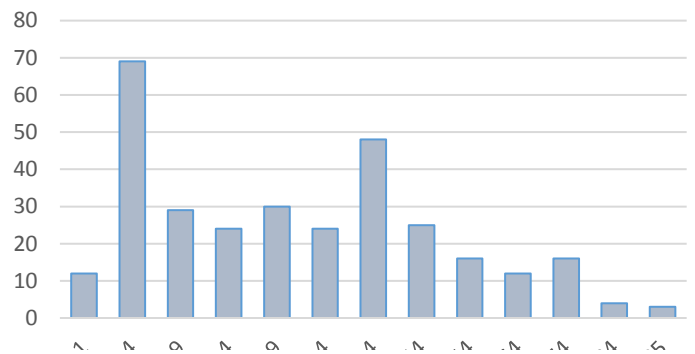
## January 1, 2016 – December 31, 2016

### Confirmed and Probable Cases

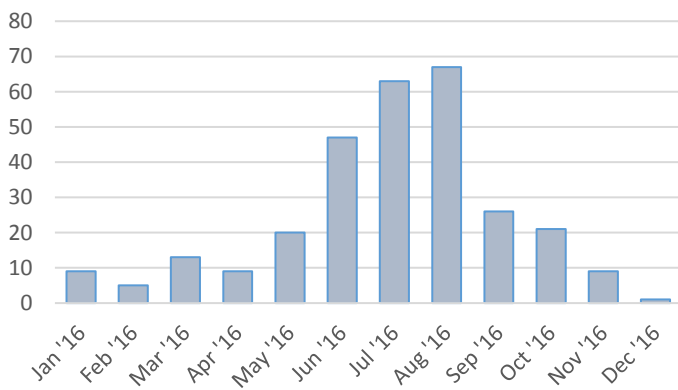


Summary				
Number of Cases	295			
Incidence rate (per 100,000 population)	9.7			
Percent change from previous 5 yr AVG (%)	58.6			
Age (in years)				
Mean	24			
Median	17			
Min-Max	0-97			
Gender		Number	Percent	Rate
Female	160	54.2	5.3	
Male	134	45.4	4.4	
Unknown	1	0.3		

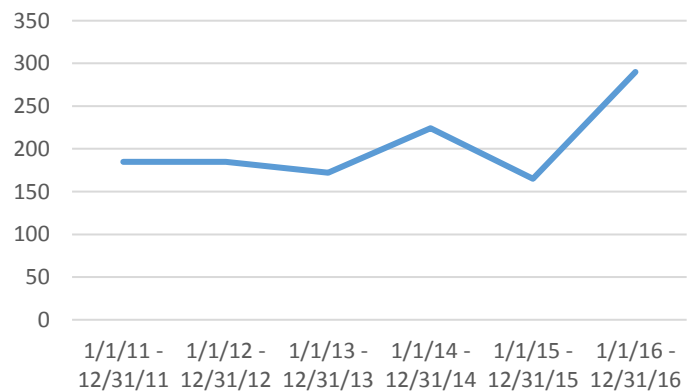
12 MONTH E. coli (STEC) CASES BY AGE



12 MONTH E. coli (STEC) REPORTS BY MONTH



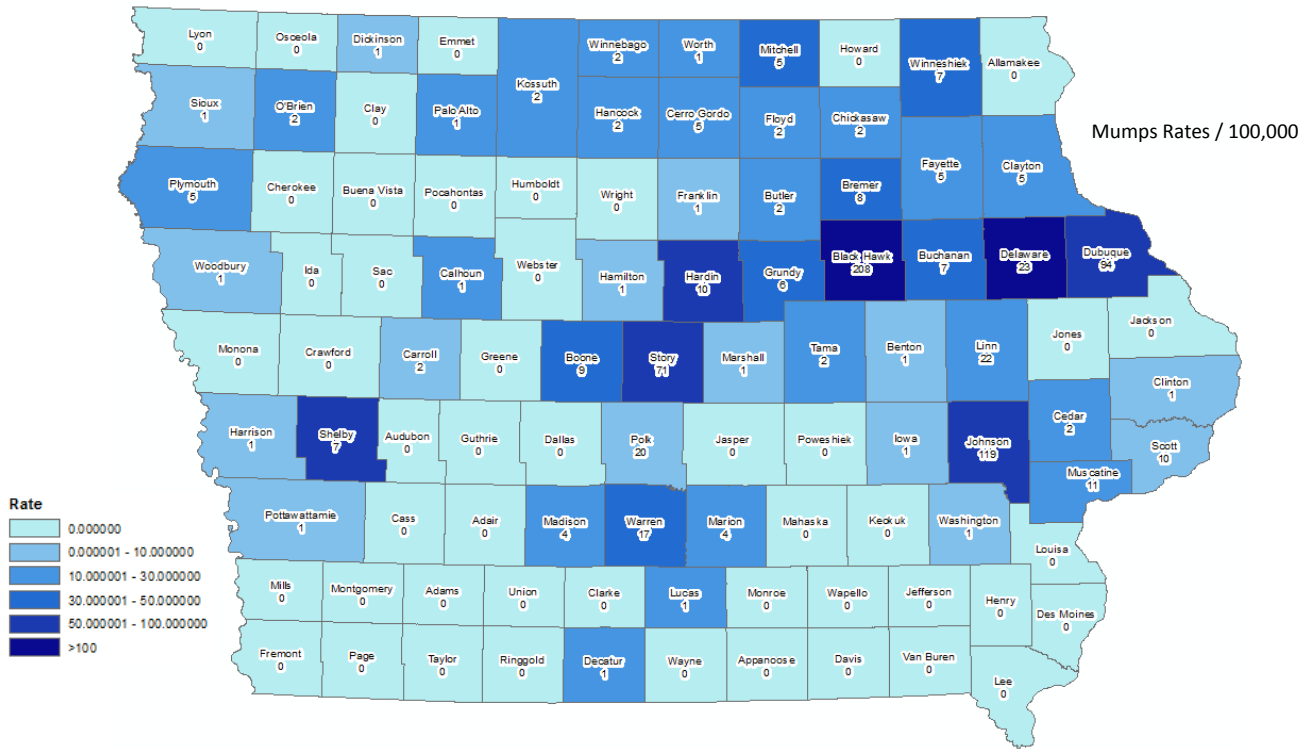
5 YEAR E. coli (STEC) TREND



# Mumps Summary

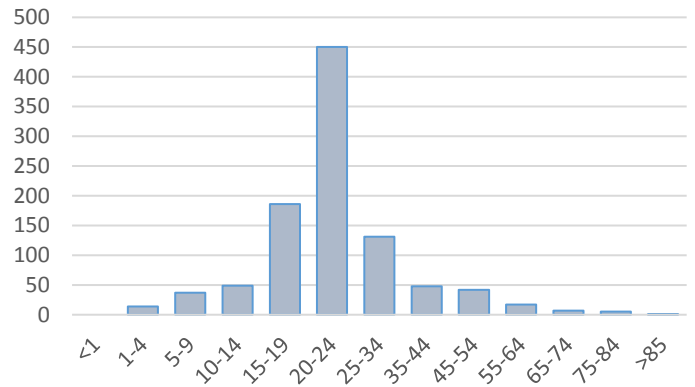
## January 1, 2016 – December 31, 2016

### Confirmed and Probable Cases

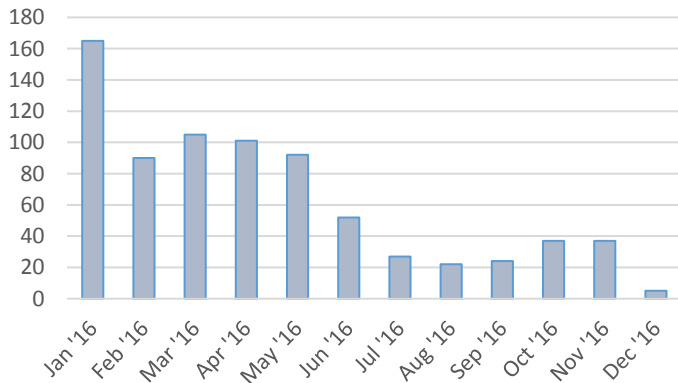


Summary			
Number of Cases	780		
Incidence rate (per 100,000 population)	25.6		
Percent change from previous 5 yr AVG (%)	968.5		
Age (in years)			
Mean	25		
Median	22		
Min-Max	1-85		
Gender		Number	Percent
Female	380	48.7	12.5
Male	391	50.1	12.8
Unknown	8	1.0	

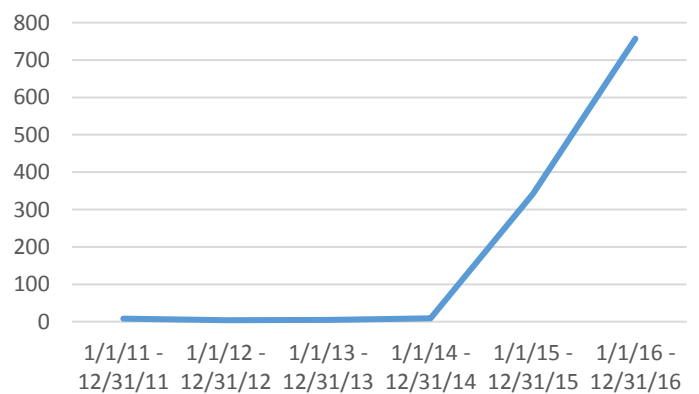
12 MONTH MUMPS CASES BY AGE



12 MONTH MUMPS CASES BY MONTH



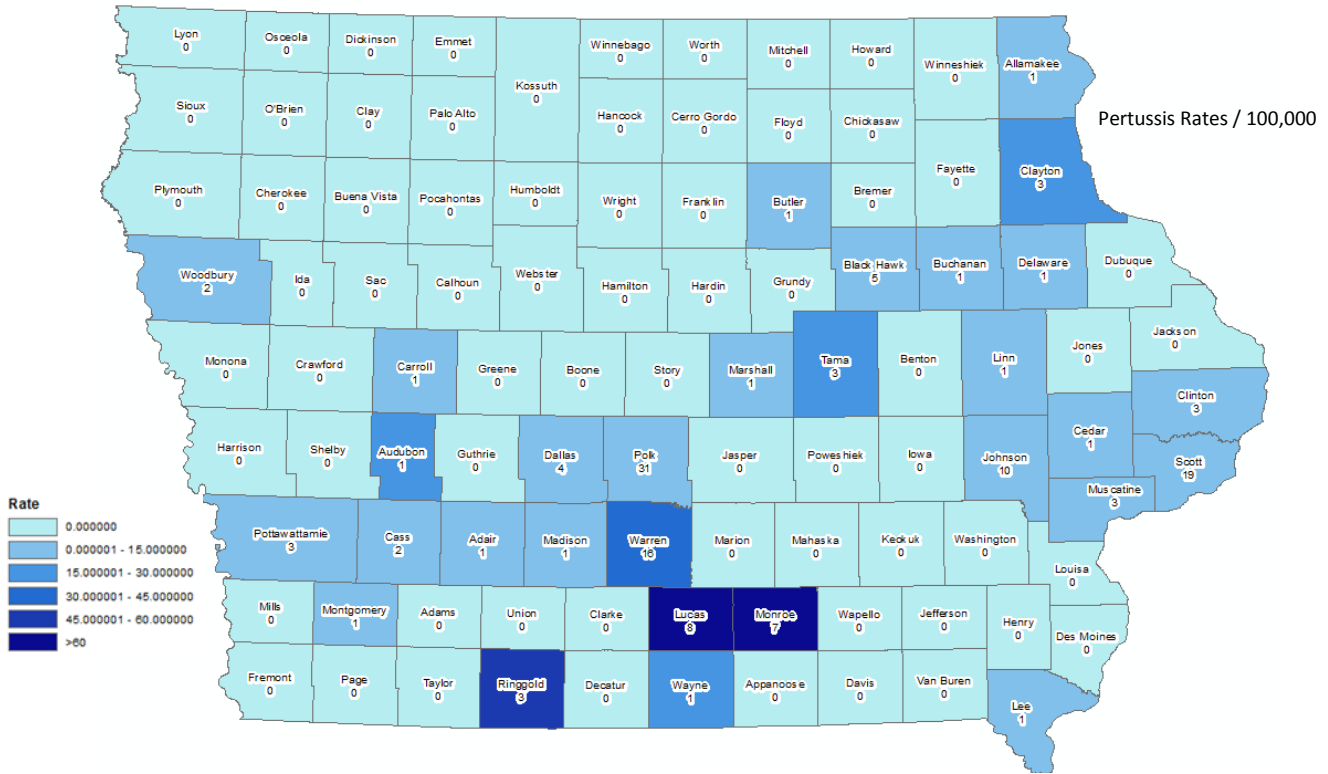
5 YEAR MUMPS TREND



# Pertussis Summary

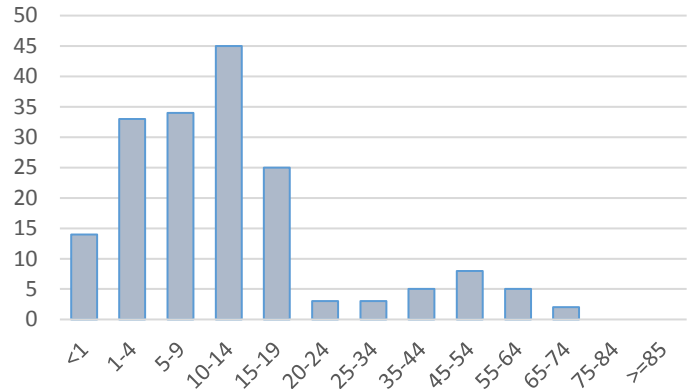
## January 1, 2016 – December 31, 2016

### Confirmed and Probable Cases

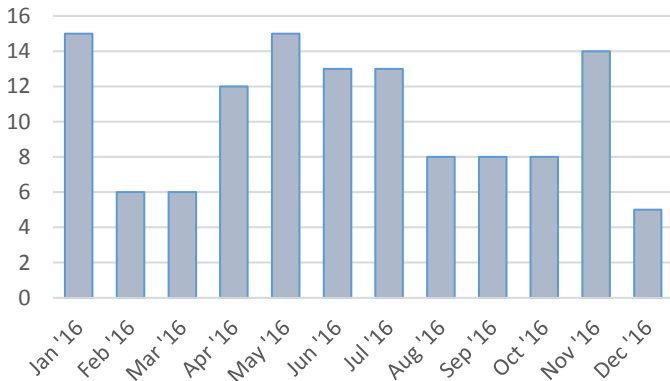


Summary				
Number of Cases	143			
Incidence rate (per 100,000 population)	4.7			
Percent change from previous 5 yr AVG (%)	-73.2			
Age (in years)				
Mean	15			
Median	10			
Min-Max	0-80			
Gender		Number	Percent	Rate
Female	72	50.3	2.4	
Male	69	48.3	2.3	
Unknown	2	1.4		

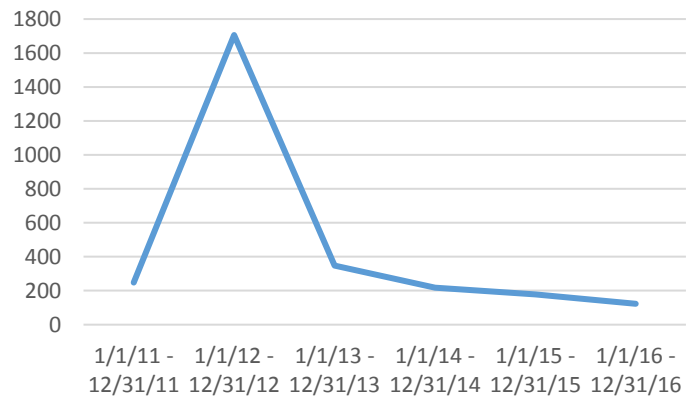
12 MONTH PERTUSSIS CASES BY AGE



12 MONTH PERTUSSIS CASES BY MONTH



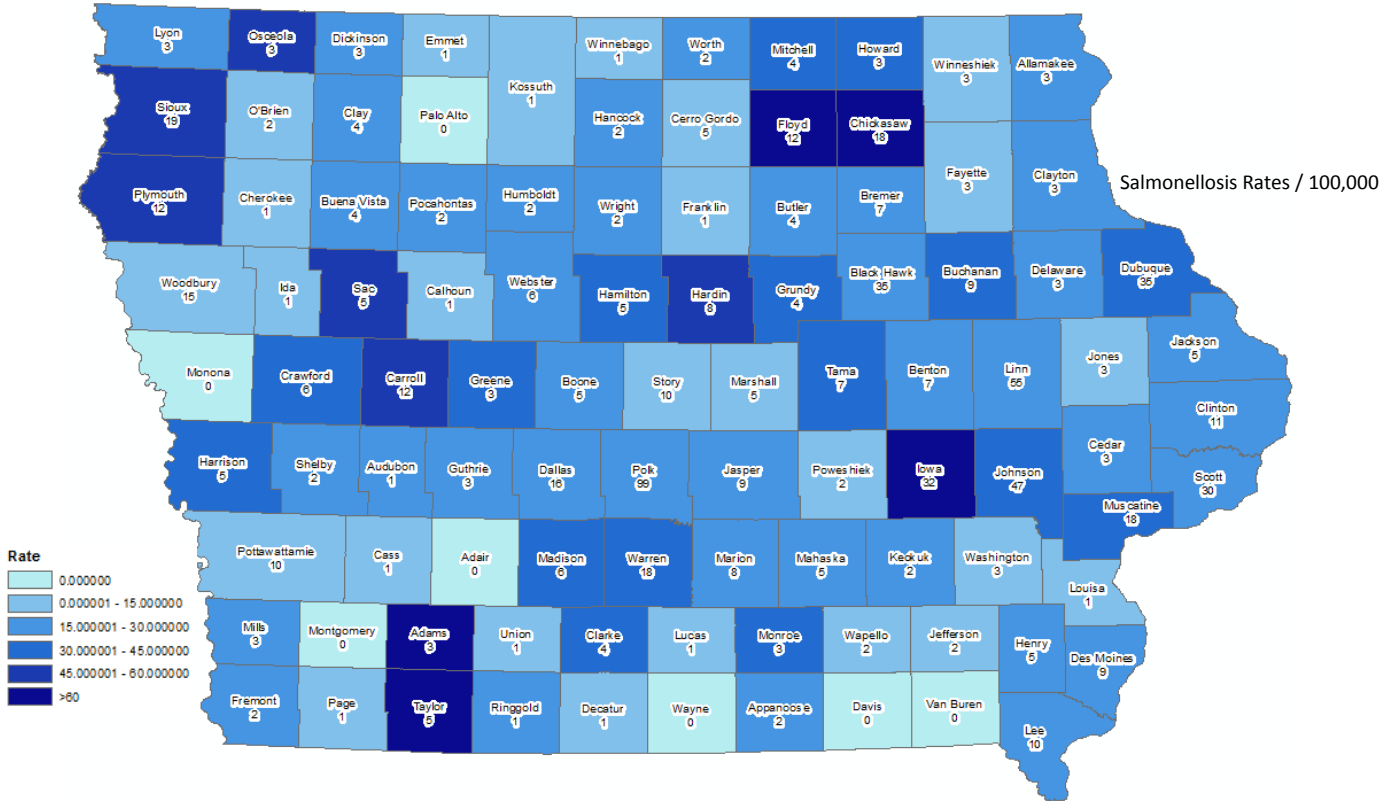
5 YEAR PERTUSSIS TREND



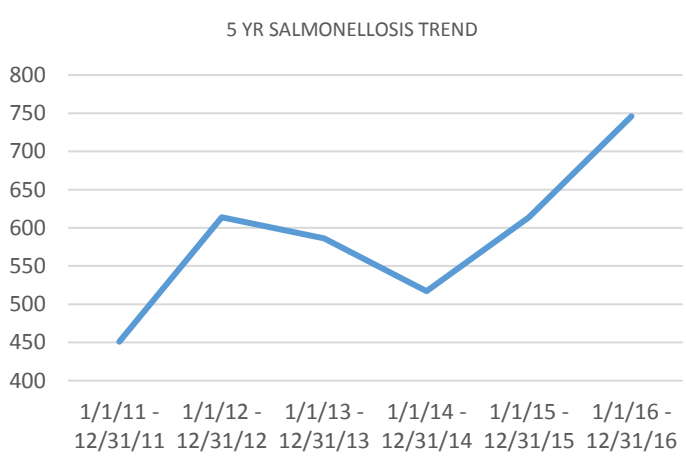
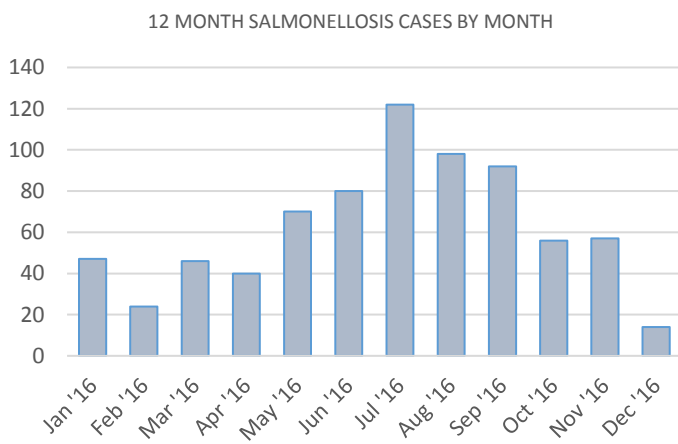
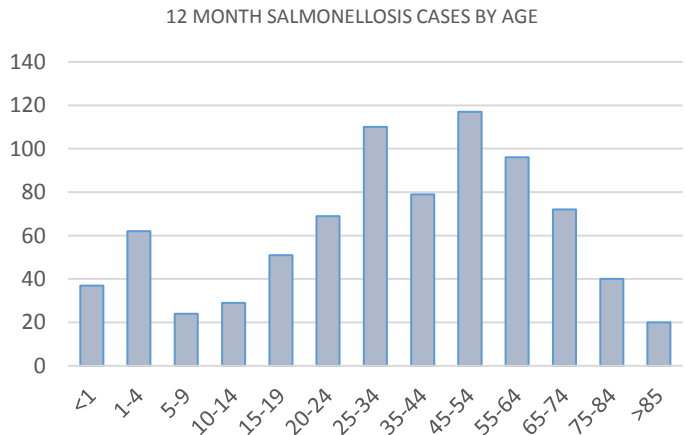
# Salmonellosis Summary

January 1, 2016 – December 31, 2016

Confirmed and Probable Cases



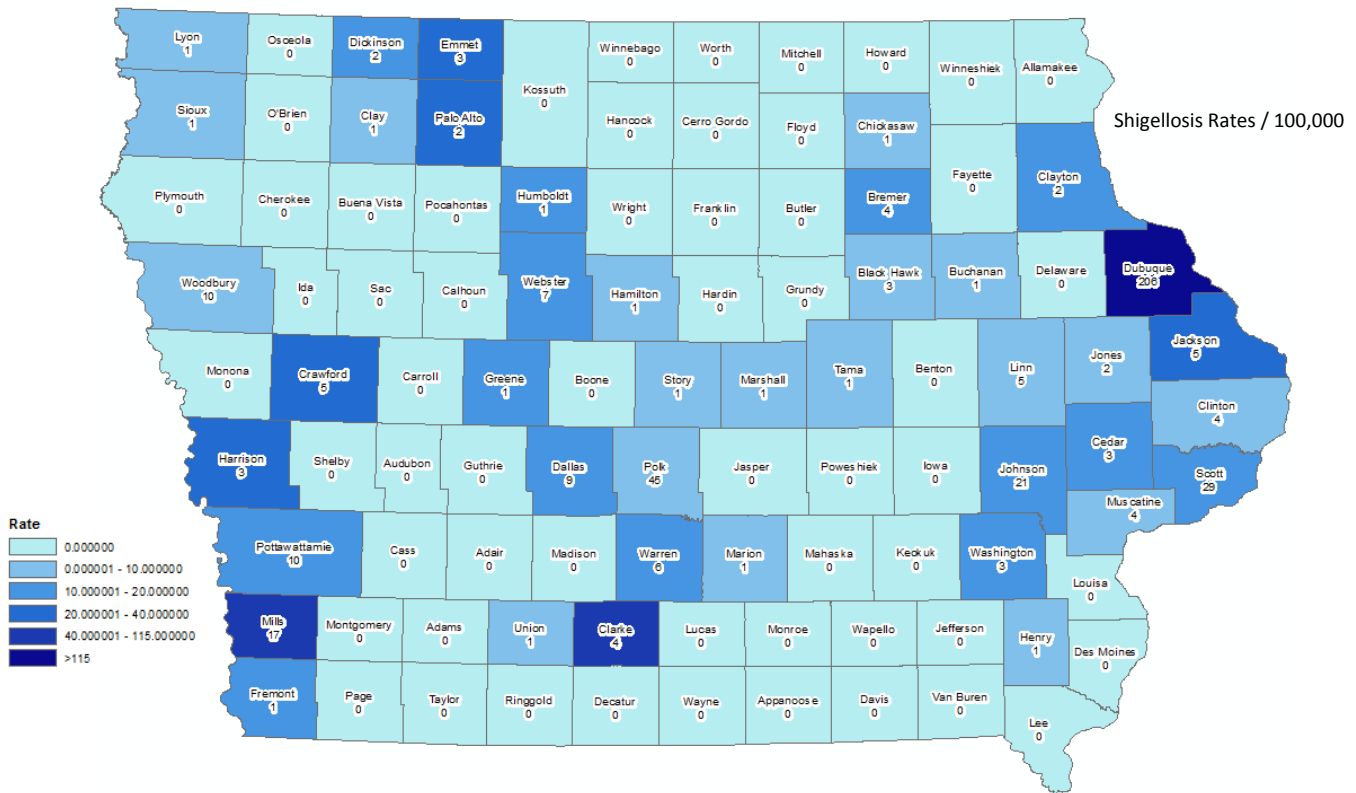
Summary			
Number of Cases	776		
Incidence rate (per 100,000 population)	25.5		
Percent change from previous 5 yr AVG (%)	39.8		
Age (in years)			
Mean	39		
Median	38		
Min-Max	0-96		
Gender			
	Number	Percent	Rate
Female	393	50.6	12.9
Male	374	48.2	12.3
Unknown	9	1.2	



# Shigellosis Summary

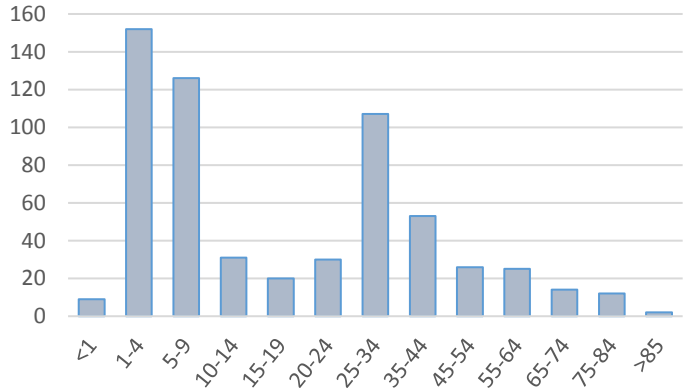
## January 1, 2016 – December 31, 2016

### Confirmed and Probable Cases

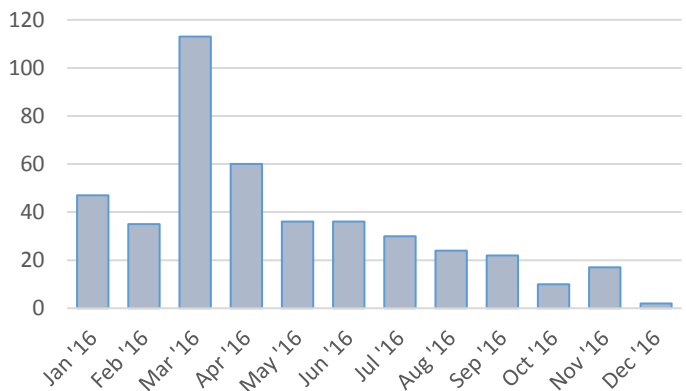


Summary				
Number of Cases	446			
Incidence rate (per 100,000 population)	14.6			
Percent change from previous 5 yr AVG (%)	68.9			
Age (in years)				
Mean	21			
Median	13			
Min-Max	0-91			
Gender		Number	Percent	Rate
Female	241	54.0	7.9	
Male	177	39.7	5.8	
Unknown	28	6.3		

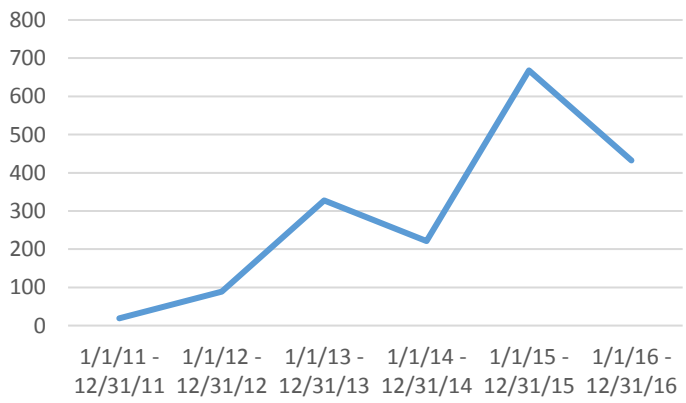
12 MONTH SHIGELLOSIS CASES BY AGE



12 MONTH SHIGELLOSIS CASES BY MONTH



5 YR SHIGELLOSIS TREND



# IOWA DEPARTMENT OF PUBLIC HEALTH

[WWW.IDPH.IOWA.GOV](http://WWW.IDPH.IOWA.GOV)

1-866-27-9878

## CENTER FOR ACUTE DISEASE EPIDEMIOLOGY

[WWW.IDPH.IOWA.GOV/CADE](http://WWW.IDPH.IOWA.GOV/CADE)

1-800-362-2736

Gerd Clabaugh, MPA.....	Director
Sarah Reisetter.....	Deputy Director
Ken Sharp, MPA, RS.....	Division Director
Patricia Quinlisk, MD, MPH.....	Medical Director/State Epidemiologist
Ann Garvey, DVM, MPH, MA.....	Public Health Veterinarian/ Deputy State Epidemiologist

## CENTER FOR ACUTE DISEASE EPIDEMIOLOGY STAFF

Shawnice Cameron.....	Administrative Assistant
Amanda Casson.....	Interview and Outbreak Response Team
Julie Coughlin, MPH.....	Vector-Borne Disease Epidemiologist
Abigail Cowan.....	Interview and Outbreak Response Team
Chris Galeazzi, MPH.....	Field Epidemiologist Unit Lead
Amy Hoehne, MPH.....	Field Epidemiologist
Nick Kalas, MPH.....	Field Epidemiologist
Heather Matherly, RN.....	Nurse Clinician
Jill Newland.....	Iowa Disease Surveillance System (IDSS) Data Manager
Kemi Oni, MPH.....	Foodborne Disease Epidemiologist
Rob Ramaekers, MPH, CPH.....	Surveillance Unit Lead/Vaccine-Preventable Disease Program Coordinator
Scott Seltrecht, MPH.....	Influenza Surveillance Program Coordinator
Venessa Stalter, BS.....	Interview and Outbreak Response Team
Mike Swenson.....	Healthcare-Associated Infections Program Data Manager
Kyli Torkelson.....	Interview and Outbreak Response Team
Ngoc Tran, MPA, CPM.....	Iowa Disease Surveillance System (IDSS) Coordinator
Lisa Vitale, RN.....	Nurse Clinician
Diana Von Stein, MPH.....	Field Epidemiologist
Andy Weigel, MSW.....	Field Epidemiologist
Nancy Wilde, BS, LPN.....	Epidemiologist/Healthcare-Associated Infection Program Coordinator
Teresa Wong, BA.....	Interview and Outbreak Response Team
LaShaina Woods, MPH, MHA.....	Interview and Outbreak Response Team