

Food Assistance Report Series F-1  
(Revised Effective July 2016)  
Report for November, 2016



---

**Effective with the July 2016 Report.**

Changes have been made to this report to provide more complete and accurate information about the households and individuals in Iowa receiving Food Assistance benefits through the federal Supplemental Nutrition Assistance Program (SNAP).

Categories for households have been renamed or added and the method used to assign households to categories changed to better reflect other types of assistance received from the Iowa Department of Human Services:

- \* If one or more individuals receiving Food Assistance also receives FIP, the household is categorized as **FA/FIP**.

- \* If no one receives FIP, but at least one individual also receives Medical Assistance, the household is categorized as **FA/Medical Assistance**.

- \* If no one receives FIP or Medical Assistance, but at least one individual receives Healthy and Well Kids in Iowa or *hawk-i* benefits, the household is categorized as **FA/hawk-i**.

- \* If no one receives FIP, Medical Assistance or *hawk-i*, the household is categorized as **FA Only**.

Categories for individuals have likewise been renamed or added. Using the same categories above, individuals are assigned based on their own circumstances. Previously, the household category was assigned to all members of the Food Assistance household, regardless of individual status. This change provides a more accurate individual count by category.

Finally, the timing for the report has changed. Previously produced at or near the end of the month, the report missed cases that were closed for any number of reasons when the report was created, only to shortly re-open. Now the report is produced mid-month after the report month. As a result, it may appear that caseloads have increased. Instead, the new report provides more complete and accurate counts by including cases missed by the old report.

Note that data for the corresponding month from the prior year was also categorized as described above allowing for an equivalent comparison to the current report month.

Food Assistance Report Series F-1  
Report for November, 2016

Food Assistance Program - State Summary

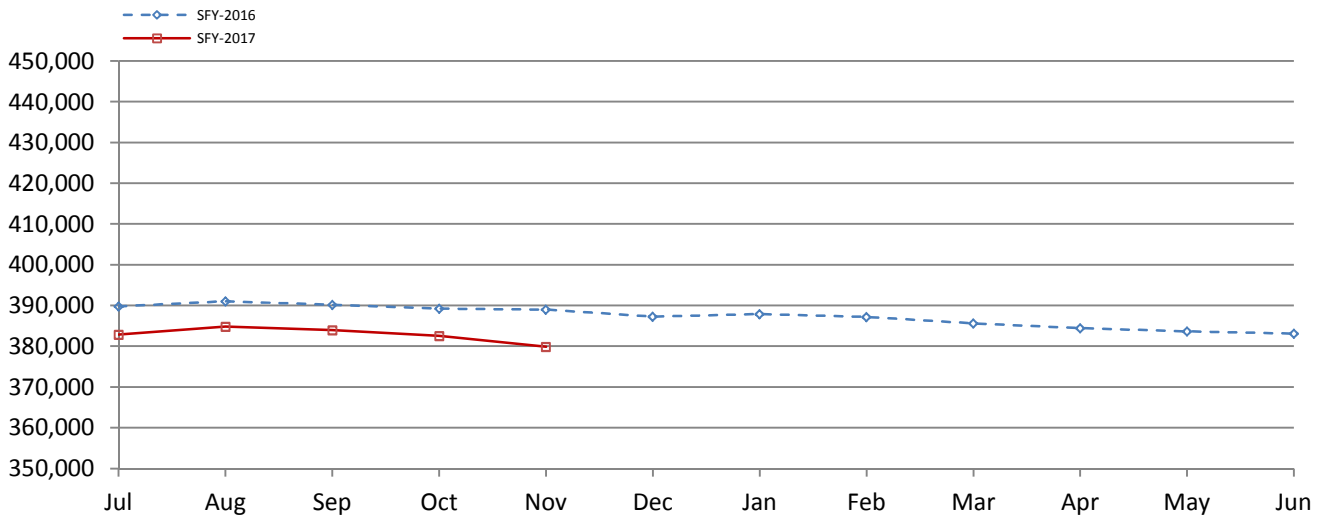
	<u>November, 2016</u>	<u>October, 2016</u>	<u>November, 2015</u>	<u>% of Change Over Last Year</u>
<b>*Households</b>				
FA/FIP	8,865	9,028	9,645	-8.1%
FA/Medical Assistance	148,339	148,769	151,149	-1.9%
FA/ <i>hawk-i</i>	598	623	524	14.1%
FA Only	20,986	21,221	21,007	-0.1%
Total Households	178,788	179,641	182,325	-1.9%
<b>*Recipients</b>				
FA/FIP	23,201	23,592	24,952	-7.0%
FA/Medical Assistance	302,736	304,056	310,061	-2.4%
FA/ <i>hawk-i</i>	2,031	2,061	1,724	17.8%
FA Only	51,908	52,840	52,275	-0.7%
Total Recipients	379,876	382,549	389,012	-2.3%
<b>*Allotments</b>				
FA/FIP	\$3,727,952	\$3,800,882	\$4,016,204	-7.2%
FA/Medical Assistance	\$33,992,677	\$34,189,179	\$35,274,034	-3.6%
FA/ <i>hawk-i</i>	\$136,506	\$150,077	\$123,906	10.2%
FA Only	\$3,480,753	\$3,514,275	\$3,420,845	1.8%
Total Allotments	\$41,337,888	\$41,654,413	\$42,834,989	-3.5%
<b>*Average Allotment per Household</b>				
FA/FIP	\$420.52	\$421.01	\$416.40	1.0%
FA/Medical Assistance	\$229.16	\$229.81	\$233.37	-1.8%
FA/ <i>hawk-i</i>	\$228.27	\$240.89	\$236.46	-3.5%
FA Only	\$165.86	\$165.60	\$162.84	1.9%
Overall Average per Household	\$231.21	\$231.88	\$234.94	-1.6%
<b>*Average Allotment per Recipient</b>				
FA/FIP	\$160.68	\$161.11	\$160.96	-0.2%
FA/Medical Assistance	\$112.28	\$112.44	\$113.76	-1.3%
FA/ <i>hawk-i</i>	\$67.21	\$72.82	\$71.87	-6.5%
FA Only	\$67.06	\$66.51	\$65.44	2.5%
Overall Average per Recipient	\$108.82	\$108.89	\$110.11	-1.2%

State Fiscal Year to Date

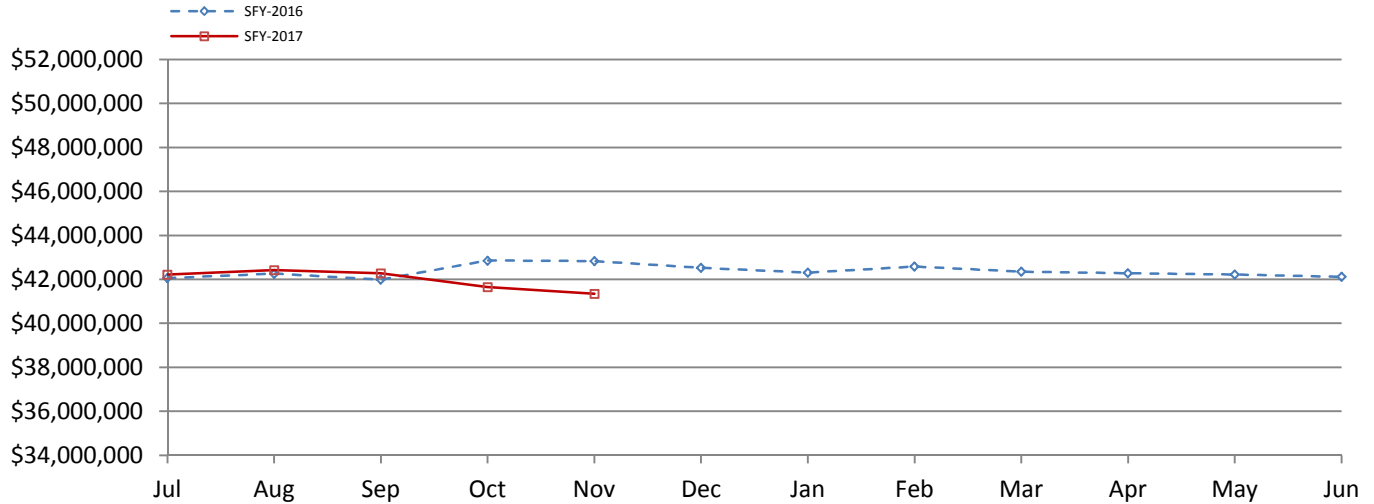
<b>*Allotment</b>	<b>SFY 2017</b>	<b>SFY 2016</b>	<b>% of Change over Last Year</b>
FA/FIP	\$18,769,296	\$19,965,058	-5.99%
FA/Medical Assistance	\$172,690,505	\$174,480,181	-1.03%
FA/ <i>hawk-i</i>	\$707,035	\$604,668	16.93%
FA Only	\$17,729,011	\$16,928,402	4.73%
Total Allotment	\$209,895,847	\$211,978,309	-0.98%

Food Assistance Report Series F-1  
Report for November, 2016

### Total Food Assistance Recipients



### Total Food Assistance Benefits



Food Assistance Report Series F-1  
Report for November, 2016

**Food Assistance Participation by Case Type and County**

County	FA/FIP			FA/Medical Assistance			FA/hawk-i			FA Only			Total			Participation Rate*
	Households	Recipients	Allotment	Households	Recipients	Allotment	Households	Recipients	Allotment	Households	Recipients	Allotment	Households	Recipients	Allotment	
<b>Area 0 - DHS</b>																
DHS	0	0	\$0	6	13	\$1,971	0	0	\$0	0	0	\$0	6	13	\$1,971	0.0%
<b>Area Total</b>	0	0	\$0	6	13	\$1,971	0	0	\$0	0	0	\$0	6	13	\$1,971	

**Food Assistance Participation by Case Type and County**

County	FA/FIP			FA/Medical Assistance			FA/hawk-i			FA Only			Total			Participation Rate*
	Households	Recipients	Allotment	Households	Recipients	Allotment	Households	Recipients	Allotment	Households	Recipients	Allotment	Households	Recipients	Allotment	
<b>Area 1 - Western</b>																
Audubon	13	32	\$5,133	211	454	\$47,521	0	0	\$0	23	69	\$3,283	247	555	\$55,937	45.9%
Buena Vista	36	99	\$16,608	890	2,132	\$213,393	5	22	\$564	103	358	\$15,760	1,034	2,611	\$246,325	52.0%
Carroll	30	103	\$16,066	696	1,386	\$148,414	1	21	\$344	86	253	\$16,377	813	1,763	\$181,201	44.0%
Cass	37	83	\$14,205	689	1,452	\$146,854	4	14	\$692	86	223	\$11,477	816	1,772	\$173,228	49.0%
Cherokee	16	37	\$6,713	420	812	\$80,726	3	8	\$182	60	149	\$7,299	499	1,006	\$94,920	41.4%
Clay	26	81	\$11,722	720	1,420	\$144,489	2	13	\$83	80	201	\$11,985	828	1,715	\$168,279	47.5%
Crawford	74	192	\$29,166	668	1,557	\$160,025	5	16	\$432	81	235	\$12,606	828	2,000	\$202,229	38.2%
Dickinson	15	37	\$6,149	544	1,038	\$110,940	2	12	\$506	73	208	\$13,122	634	1,295	\$130,717	49.1%
Emmet	27	72	\$12,833	422	901	\$96,187	4	10	\$1,407	60	152	\$7,654	513	1,135	\$118,081	50.4%
Fremont	13	32	\$4,808	368	795	\$80,760	1	1	\$302	38	118	\$5,708	420	946	\$91,578	58.9%
Greene	27	64	\$12,836	450	974	\$95,310	4	14	\$898	57	161	\$9,502	538	1,213	\$118,546	51.9%
Guthrie	10	30	\$3,373	394	847	\$91,103	2	8	\$194	73	185	\$11,403	479	1,070	\$106,073	44.4%
Harrison	32	82	\$15,012	643	1,293	\$133,680	2	9	\$197	78	211	\$11,530	755	1,595	\$160,419	52.9%
Ida	3	6	\$967	234	500	\$51,874	1	7	\$266	42	99	\$4,093	280	612	\$57,200	33.1%
Kossuth	14	37	\$4,954	478	958	\$95,375	4	13	\$1,430	54	173	\$7,188	550	1,181	\$108,947	41.7%
Lyon	5	15	\$2,515	205	479	\$46,633	2	6	\$1,048	24	93	\$3,179	236	593	\$53,375	29.4%
Mills	26	57	\$9,085	570	1,261	\$140,569	0	0	\$0	70	229	\$13,927	666	1,547	\$163,581	57.0%
Monona	15	37	\$6,380	412	851	\$85,492	2	14	\$277	119	246	\$26,681	548	1,148	\$118,830	47.4%
Montgomery	42	110	\$17,966	699	1,424	\$157,490	2	4	\$86	87	248	\$14,025	830	1,786	\$189,567	55.6%
O'Brien	25	69	\$11,607	399	895	\$90,629	4	11	\$1,270	61	194	\$7,425	489	1,169	\$110,931	37.3%
Osceola	4	7	\$1,478	179	373	\$39,477	2	3	\$32	24	57	\$3,758	209	440	\$44,745	37.0%
Page	50	121	\$18,573	862	1,783	\$182,362	3	4	\$721	90	271	\$13,139	1,005	2,179	\$214,795	55.1%
Palo Alto	16	47	\$8,176	321	695	\$62,365	2	6	\$122	35	109	\$5,724	374	857	\$76,387	37.2%
Plymouth	17	48	\$6,794	599	1,310	\$134,325	3	17	\$896	61	201	\$9,144	680	1,576	\$151,159	37.2%
Pottawattamie	379	958	\$152,625	6,352	12,623	\$1,423,693	13	48	\$3,556	924	2,184	\$150,368	7,668	15,813	\$1,730,242	74.7%
Sac	18	41	\$6,159	314	708	\$70,943	1	4	\$285	42	110	\$3,958	375	863	\$81,345	43.2%
Shelby	21	58	\$8,992	427	860	\$87,637	2	7	\$582	52	139	\$6,130	502	1,064	\$103,341	37.7%
Sioux	23	46	\$7,700	575	1,294	\$131,219	10	27	\$2,903	66	251	\$10,234	674	1,618	\$152,056	26.6%
Taylor	8	26	\$4,163	287	582	\$64,279	1	2	\$357	46	131	\$8,159	342	741	\$76,958	43.4%
Woodbury	378	1,034	\$164,114	6,498	14,003	\$1,568,787	32	88	\$6,686	851	2,306	\$144,858	7,759	17,431	\$1,884,445	61.4%
<b>Area Total</b>	1,400	3,661	\$586,872	26,526	55,660	\$5,982,551	119	409	\$26,318	3,546	9,564	\$569,696	31,591	69,294	\$7,165,437	52.7%

Food Assistance Report Series F-1  
Report for November, 2016

**Food Assistance Participation by Case Type and County**

County	FA/FIP			FA/Medical Assistance			FA/hawk-i			FA Only			Total			Participation Rate*
	Households	Recipients	Allotment	Households	Recipients	Allotment	Households	Recipients	Allotment	Households	Recipients	Allotment	Households	Recipients	Allotment	
<b>Area 2 - Northern</b>																
Allamakee	40	102	\$16,274	522	1,187	\$119,422	4	14	\$642	47	148	\$6,386	613	1,451	\$142,724	42.0%
Black Hawk	728	1,857	\$295,752	8,108	15,503	\$1,710,906	28	101	\$4,386	1,157	2,603	\$173,783	10,021	20,064	\$2,184,827	57.0%
Bremer	24	54	\$8,908	512	1,036	\$104,577	3	14	\$1,060	74	247	\$12,523	613	1,351	\$127,068	38.0%
Buchanan	43	96	\$15,613	673	1,384	\$140,568	3	13	\$678	69	237	\$12,043	788	1,730	\$168,902	46.7%
Butler	25	63	\$10,838	498	1,060	\$99,821	2	6	\$456	61	180	\$7,827	586	1,309	\$118,942	50.5%
Calhoun	11	28	\$4,434	350	799	\$85,273	1	2	\$16	37	116	\$6,320	399	945	\$96,043	37.5%
Cerro Gordo	103	272	\$43,661	2,341	4,302	\$465,727	11	41	\$2,901	346	758	\$50,596	2,801	5,373	\$562,885	50.5%
Chickasaw	17	42	\$6,763	353	774	\$81,643	3	9	\$388	41	146	\$4,902	414	971	\$93,696	30.6%
Clayton	22	59	\$9,805	519	1,037	\$99,728	1	8	\$505	82	208	\$12,458	624	1,312	\$122,496	31.4%
Delaware	33	96	\$14,269	540	1,116	\$116,915	1	2	\$339	51	176	\$9,889	625	1,390	\$141,412	37.3%
Fayette	51	114	\$17,420	1,032	2,163	\$218,057	2	12	\$541	140	366	\$21,410	1,225	2,655	\$257,428	54.2%
Floyd	53	134	\$20,251	757	1,626	\$167,529	2	10	\$363	103	261	\$15,899	915	2,031	\$204,042	43.6%
Franklin	25	81	\$11,668	411	911	\$96,091	4	7	\$478	32	126	\$5,499	472	1,125	\$113,736	38.8%
Grundy	10	26	\$3,519	258	571	\$60,508	1	1	\$16	35	108	\$6,205	304	706	\$70,248	36.7%
Hamilton	25	59	\$9,769	553	1,130	\$120,157	1	4	\$357	76	175	\$12,115	655	1,368	\$142,398	36.4%
Hancock	19	47	\$6,604	299	651	\$64,055	0	0	\$0	39	116	\$6,593	357	814	\$77,252	38.0%
Hardin	37	95	\$13,924	718	1,635	\$163,810	0	0	\$0	87	252	\$12,717	842	1,982	\$190,451	53.7%
Howard	22	65	\$10,010	294	586	\$56,090	0	0	\$0	47	117	\$5,614	363	768	\$71,714	31.7%
Humboldt	13	38	\$5,832	350	727	\$71,162	1	4	\$267	35	94	\$6,768	399	863	\$84,029	33.4%
Marshall	106	276	\$44,777	2,131	4,644	\$492,648	13	50	\$3,108	265	806	\$41,621	2,515	5,776	\$582,154	59.1%
Mitchell	12	26	\$3,958	257	496	\$51,060	0	0	\$0	33	87	\$4,942	302	609	\$59,960	26.6%
Pocahontas	10	31	\$5,066	329	738	\$78,362	3	3	\$739	43	131	\$6,587	385	903	\$90,754	45.7%
Webster	155	390	\$60,556	2,586	5,059	\$563,726	8	35	\$777	312	707	\$45,138	3,061	6,191	\$670,197	63.2%
Winnebago	21	51	\$7,790	346	738	\$77,807	1	4	\$194	67	161	\$9,164	435	954	\$94,955	41.9%
Winneshiek	22	52	\$7,800	429	862	\$84,475	3	5	\$626	62	145	\$8,026	516	1,064	\$100,927	35.8%
Worth	14	39	\$6,276	215	455	\$49,131	0	0	\$0	32	104	\$5,338	261	598	\$60,745	34.2%
Wright	49	123	\$19,058	578	1,296	\$139,346	2	9	\$697	76	204	\$13,770	705	1,632	\$172,871	53.9%
<b>Area Total</b>	<b>1,690</b>	<b>4,316</b>	<b>\$680,595</b>	<b>25,959</b>	<b>52,486</b>	<b>\$5,578,594</b>	<b>98</b>	<b>354</b>	<b>\$19,534</b>	<b>3,449</b>	<b>8,779</b>	<b>\$524,133</b>	<b>31,196</b>	<b>65,935</b>	<b>\$6,802,856</b>	<b>48.6%</b>

Food Assistance Report Series F-1  
Report for November, 2016

**Food Assistance Participation by Case Type and County**

County	FA/FIP			FA/Medical Assistance			FA/hawk-i			FA Only			Total			Participation Rate*
	Households	Recipients	Allotment	Households	Recipients	Allotment	Households	Recipients	Allotment	Households	Recipients	Allotment	Households	Recipients	Allotment	
<b>Area 3 - Eastern</b>																
Cedar	9	17	\$2,314	465	1,049	\$113,988	3	12	\$744	53	170	\$8,232	530	1,248	\$125,278	36.6%
Clinton	191	481	\$79,662	3,376	6,545	\$749,965	8	30	\$1,643	444	1,107	\$74,256	4,019	8,163	\$905,526	69.4%
Des Moines	184	482	\$76,876	2,830	5,731	\$667,720	7	29	\$1,982	414	1,043	\$77,793	3,435	7,285	\$824,371	60.0%
Dubuque	356	937	\$145,495	4,132	8,459	\$942,131	17	59	\$2,862	676	1,508	\$111,776	5,181	10,963	\$1,202,264	56.6%
Henry	61	176	\$27,803	953	2,079	\$220,598	5	14	\$1,704	113	308	\$14,472	1,132	2,577	\$264,577	50.6%
Jackson	51	134	\$21,409	858	1,823	\$193,464	3	7	\$493	84	231	\$10,693	996	2,195	\$226,059	44.1%
Lee	139	343	\$55,665	2,398	4,886	\$538,663	5	18	\$1,932	299	754	\$47,179	2,841	6,001	\$643,439	62.6%
Louisa	28	79	\$11,984	435	939	\$95,774	3	8	\$564	40	117	\$7,689	506	1,143	\$116,011	43.9%
Muscatine	131	345	\$55,206	2,544	5,314	\$602,937	12	35	\$2,876	305	968	\$56,359	2,992	6,662	\$717,378	63.5%
Scott	796	1,929	\$329,321	11,686	23,501	\$2,873,096	31	99	\$7,215	1,857	4,350	\$348,423	14,370	29,879	\$3,558,055	81.1%
<b>Area Total</b>	<b>1,946</b>	<b>4,923</b>	<b>\$805,735</b>	<b>29,677</b>	<b>60,326</b>	<b>\$6,998,336</b>	<b>94</b>	<b>311</b>	<b>\$22,015</b>	<b>4,285</b>	<b>10,556</b>	<b>\$756,872</b>	<b>36,002</b>	<b>76,116</b>	<b>\$8,582,958</b>	<b>65.4%</b>

**Food Assistance Participation by Case Type and County**

County	FA/FIP			FA/Medical Assistance			FA/hawk-i			FA Only			Total			Participation Rate*
	Households	Recipients	Allotment	Households	Recipients	Allotment	Households	Recipients	Allotment	Households	Recipients	Allotment	Households	Recipients	Allotment	
<b>Area 4 - Cedar Rapids</b>																
Appanoose	46	119	\$17,525	894	1,692	\$176,104	1	10	\$607	115	251	\$21,012	1,056	2,072	\$215,248	56.4%
Benton	32	84	\$13,505	840	1,714	\$184,260	4	16	\$1,033	114	285	\$15,924	990	2,099	\$214,722	46.9%
Davis	13	27	\$4,899	273	604	\$63,123	3	9	\$1,105	32	101	\$3,763	321	741	\$72,890	23.4%
Iowa	15	30	\$5,632	396	852	\$96,766	2	7	\$868	70	178	\$9,839	483	1,067	\$113,105	35.9%
Jasper	106	250	\$38,466	1,732	3,400	\$380,162	9	29	\$1,225	238	625	\$41,944	2,085	4,304	\$461,797	55.8%
Jefferson	33	76	\$12,383	1,046	1,869	\$210,819	3	11	\$461	102	230	\$13,405	1,184	2,186	\$237,068	51.1%
Johnson	311	941	\$143,244	4,205	8,535	\$973,784	26	52	\$4,389	648	1,421	\$108,991	5,190	10,949	\$1,230,408	32.3%
Jones	41	101	\$18,307	648	1,451	\$153,441	4	12	\$1,583	82	251	\$15,497	775	1,815	\$188,828	47.1%
Keokuk	12	36	\$4,756	458	1,000	\$106,077	2	8	\$495	39	136	\$7,312	511	1,180	\$118,640	45.9%
Linn	734	1,985	\$313,029	10,946	21,716	\$2,480,414	48	162	\$11,184	1,550	3,483	\$248,108	13,278	27,346	\$3,052,735	69.6%
Mahaska	71	172	\$28,256	1,181	2,377	\$274,278	3	15	\$1,176	194	437	\$31,692	1,449	3,001	\$335,402	53.1%
Monroe	19	53	\$7,884	353	704	\$73,785	1	2	\$16	46	132	\$7,985	419	891	\$89,670	45.8%
Poweshiek	26	67	\$10,551	581	1,176	\$122,007	4	11	\$485	82	213	\$14,794	693	1,467	\$147,837	39.8%
Tama	26	52	\$9,072	692	1,571	\$163,680	4	15	\$925	85	250	\$15,151	807	1,888	\$188,828	48.5%
Van Buren	12	30	\$4,552	329	666	\$71,143	0	0	\$0	30	87	\$4,846	371	783	\$80,541	38.1%
Wapello	200	506	\$83,353	2,743	5,121	\$572,517	10	38	\$2,778	348	808	\$60,474	3,301	6,473	\$719,122	55.7%
Washington	34	79	\$12,746	752	1,653	\$175,349	3	9	\$689	78	232	\$11,790	867	1,973	\$200,574	48.2%
<b>Area Total</b>	<b>1,731</b>	<b>4,608</b>	<b>\$728,160</b>	<b>28,069</b>	<b>56,101</b>	<b>\$6,277,709</b>	<b>127</b>	<b>406</b>	<b>\$29,019</b>	<b>3,853</b>	<b>9,120</b>	<b>\$632,527</b>	<b>33,780</b>	<b>70,235</b>	<b>\$7,667,415</b>	<b>50.6%</b>

Food Assistance Report Series F-1  
Report for November, 2016

**Food Assistance Participation by Case Type and County**

County	FA/FIP			FA/Medical Assistance			FA/hawk-i			FA Only			Total			Participation Rate*
	Households	Recipients	Allotment	Households	Recipients	Allotment	Households	Recipients	Allotment	Households	Recipients	Allotment	Households	Recipients	Allotment	
<b>Area 5 - Des Moines</b>																
Adair	12	35	\$6,104	301	607	\$64,422	1	6	\$649	48	133	\$5,437	362	781	\$76,612	55.5%
Adams	7	14	\$1,628	152	344	\$37,573	0	0	\$0	18	61	\$2,541	177	419	\$41,742	48.6%
Boone	40	94	\$14,754	956	1,949	\$222,956	2	8	\$166	151	402	\$25,762	1,149	2,453	\$263,638	39.3%
Clarke	26	59	\$9,538	577	1,208	\$139,671	1	3	\$37	68	213	\$10,285	672	1,483	\$159,531	52.2%
Dallas	54	144	\$23,537	1,438	3,199	\$359,693	5	29	\$1,064	148	486	\$26,106	1,645	3,858	\$410,400	40.7%
Decatur	25	53	\$9,322	467	943	\$102,506	1	7	\$194	98	201	\$16,956	591	1,204	\$128,978	43.3%
Lucas	23	62	\$9,362	480	1,041	\$107,241	1	8	\$32	53	148	\$9,487	557	1,259	\$126,122	50.0%
Madison	16	42	\$6,443	453	978	\$110,218	2	10	\$434	57	175	\$9,803	528	1,205	\$126,898	37.3%
Marion	52	123	\$19,470	1,156	2,397	\$267,760	2	14	\$388	147	427	\$22,293	1,357	2,961	\$309,911	50.0%
Polk	1,613	4,503	\$730,191	27,334	55,871	\$6,629,457	125	373	\$31,901	4,181	9,638	\$717,144	33,253	70,385	\$8,108,693	73.4%
Ringgold	4	15	\$2,176	235	470	\$53,690	3	6	\$679	23	80	\$4,282	265	571	\$60,827	38.9%
Story	113	272	\$45,189	2,279	4,443	\$521,931	10	30	\$1,918	524	986	\$83,939	2,926	5,731	\$652,977	22.9%
Union	42	105	\$17,902	742	1,485	\$165,242	2	10	\$187	100	254	\$19,396	886	1,854	\$202,727	53.8%
Warren	62	148	\$24,245	1,230	2,590	\$296,817	4	26	\$1,954	202	574	\$38,052	1,498	3,338	\$361,068	48.3%
Wayne	16	43	\$6,729	325	681	\$74,339	1	2	\$17	37	116	\$6,042	379	842	\$87,127	48.6%
<b>Area Total</b>	2,105	5,712	\$926,590	38,125	78,206	\$9,153,516	160	532	\$39,620	5,855	13,894	\$997,525	46,245	98,344	\$11,117,251	57.9%
<b>State Total</b>	8,872	23,220	\$3,727,952	148,362	302,792	\$33,992,677	598	2,012	\$136,506	20,988	51,913	\$3,480,753	178,820	379,937	\$41,337,888	54.9%

\* Participation Rate is the percentage of individuals at or below 160% FPL who are receiving Food Assistance in a given area (County/SA/State). It is calculated by dividing the number of Food Assistance Recipients in an area (County/SA/State) by the number of persons in that area at or below 160% of the Federal Poverty Level (as counted in the 2014 American Community Survey).