



# STATE OF IOWA

CHESTER CULVER, GOVERNOR  
PATTY JUDGE, LT. GOVERNOR

BOARD OF PAROLE  
ELIZABETH ROBINSON  
CHAIR

January 25, 2008

The Honorable Chester J. Culver  
Governor of Iowa  
State Capitol  
Des Moines, Iowa 50319

Dear Governor Culver:

On behalf of the members and staff of the Iowa Board of Parole, I am pleased to submit our Annual Report for State Fiscal Year 2007 (July 1, 2006 – June 30, 2007).

During FY 2007 the Board approved 1,314 work release applications and 3,408 paroles. These figures represent an 8.4 percent increase in work releases and a 16.6 percent decrease in paroles. FY2007 data show that the Board has continued to work diligently to protect the public: while there were 3,839 individuals on parole at the end of FY2007, there were 1,058 (27.6 percent) revocations during the year, of which 8 (less than 0.8 percent) involved new in-state felonies against persons.

During the past year the Board of Parole continued using technology to assist in protecting the public and responding to the needs of victims. With its innovative use of the Iowa Communications Network (ICN), in recent years the Board has dramatically increased efficiency while reducing travel in considering parole. The ICN has also been of great assistance in safely controlling the size of the prison population. It also allows us to conduct revocation hearings and offer statewide public education from our own conference room.

Respectfully submitted,

A handwritten signature in black ink, appearing to read "Elizabeth Robinson".

Elizabeth Robinson  
Chairwoman

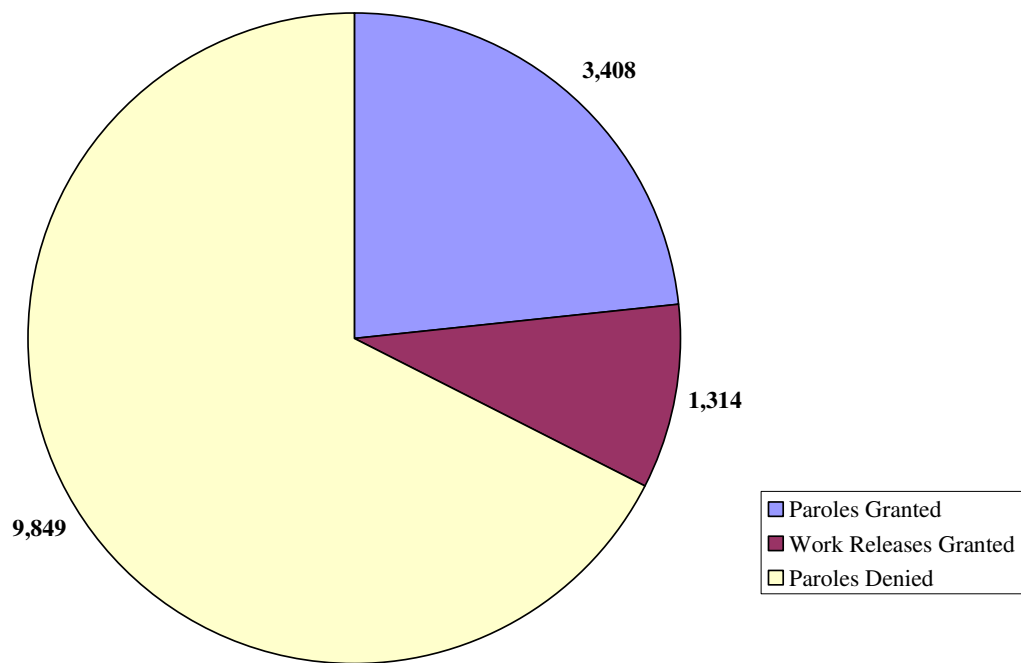
## TABLE OF CONTENTS

I. HIGHLIGHTS .....	3
II. MISSION STATEMENT .....	3
III. AGENCY OVERVIEW .....	3
IV. BOARD RESPONSIBILITIES .....	3
Table 1. Performance Summary FY06 and FY07 .....	12
Table 2. Parole and Work Release Grants, FY97-FY07 .....	13
Table 3. Decisions, by Offense Class, FY07 .....	14
Table 4. Paroles, Expirations, and Work Releases, by Offense Class and Type, FY07 .....	16
Table 5. Executive Clemency, FY07 .....	3
V. IOWA COMMUNICATIONS NETWORK.....	3
VI. TIME SERVED PRIOR TO PAROLE DECISION.....	3
Table 6. Months Served to Parole Approval, Most Common Offenses, FY07 .....	21
Table 7. Months Served Prior to Parole Approval, FY07.....	23
Table 8. Months Served until Release Decision, by Offense Class, FY07.....	33
VII. PAROLE REVOCATION .....	3
Table 9. Type and Class of Convictions Leading to Automatic Revocations, FY07 .....	35
Table 10. Parole Revocations, FY97-FY07 .....	35
Table 11. Dispositions of Parole Revocation Hearings, FY06-FY07.....	36
Table 12. Paroles Granted and Revoked, FY07.....	38
VIII. VICTIM SERVICES.....	3
Table 13. Financial Status Report Fiscal Year 2007.....	41

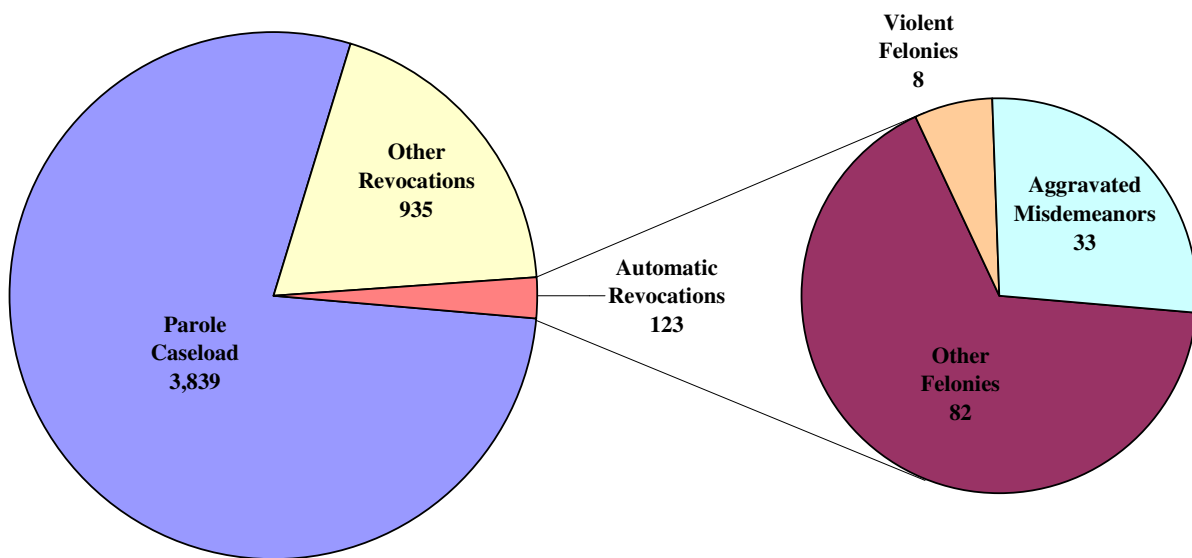
## I. HIGHLIGHTS

- The Board in FY07 approved 1,314 work release applications and 3,408 paroles. With 3,839 individuals on parole caseloads at the end of the year, 1,058 paroles were revoked during FY07. Eight of these revocations were due to new in-state felonies against persons with only one a sex crime. Parole revocations as a function of the number of persons on parole decreased slightly in FY07, with about 2.3% of active parolees revoked each month (compared to 2.5% in FY06)
- In FY07 the Board continued its innovative use of the Iowa Communications Network, which enables the board to maximize productive use of its time and permit interested parties the opportunity to view parole hearings without extensive travel. The Board continued extensive use of the ICN in conducting hearings in FY07, and the families of victims and inmates also attended hearings via the ICN. The ICN was also used as an educational tool for high school students, permitting them to view Board hearings and question members and staff about their activities.
- The Board continued to expand its list of registered victims, ensuring that victims are notified of parole, work release, and revocation hearings, and providing them the opportunity for input in the deliberative process. The total number of registered victims at the end of FY07 was 3,061 up 20.8 percent from the previous year. The number of victim requests processed by the Board has more than doubled since FY96. The Board has also established a toll-free victim number to facilitate communications: 866-448-4611.
- The Board continued its use of risk assessment in granting or denying work release or parole, with 5,833 risk assessments completed during the year. This tool has enabled the Board to better protect the public while not delaying release for inmates who are good risks.
- The Board continued participation in ICON, the state corrections data base, facilitating electronic communication and data sharing between the Board and the Department of Corrections.

### Board of Parole Decisions, FY2007



### Protecting the Public, FY2007



## **II. MISSION STATEMENT**

**To enhance public safety by making informed parole decisions and to transition offenders back to the community**

### **Objectives:**

- **Comprehensive and efficient consideration for parole and work release of offenders**
- **Return offenders back into the community through supervised conditional release**
- **Careful consideration of victim opinions concerning the release of offenders and prompt notification of victims of decisions**
- **Awareness of the serious impact that their decisions may have on the offender, the victims and the community**
- **Timely research and analysis of issues of issues critical to the performance of the Board Parole**
- **Quality advice to the Governor in matters relating to Executive Clemency**

### **III. AGENCY OVERVIEW**

The Iowa Board of Parole consists of five members appointed by the Governor. The chairperson and vice-chair are full-time salaried members of the Board. Three members are on a per diem basis and all five members serve staggered, four-year terms.

Iowa law states that the membership of the Board must be of good character and judicious background, must include a member of a minority group, may include a person ordained or designated a regular leader of a religious community and who is knowledgeable in correctional procedures and issues, and must meet at least two of the following three requirements:

- 1) contain one member who is a disinterested layperson;
- 2) contain one member who is an attorney licensed to practice law in this state and who is knowledgeable in correctional procedures and issues;
- 3) contain one member who is a person holding at least a master's degree in social work or counseling and guidance and who is knowledgeable in correctional procedures and issues.

#### ***BOARD OF PAROLE MEMBERSHIP***

**ELIZABETH ROBINSON**, Chairwoman, Davenport. Robinson was appointed to the Board in November 1994 by Governor Terry Branstad and appointed Chairperson in October 2001 by Governor Thomas J. Vilsack after having previously served as Vice-Chairperson. She also served on the Iowa Prisoner Minority Over-Representation Task Force. Robinson has worked for the City of Shreveport, Louisiana, as an Administrative Assistant and Records Specialist for the Police Department. She is a member of the Minority Chamber of Commerce, the Iowa Invests Mentor Program, the Juvenile Justice Committee, Big Sisters, and United Way. She has also been selected to serve on the Iowa Board for the Treatment of Sexual Abusers, the Criminal and Juvenile Justice Planning Council, the Iowa Organization for Victim Assistance, and The American Correctional Association. She has a degree in Applied Sciences from Southern University at Shreveport and a degree in Business Administration/Accounting from Commercial Business College in Alexandria, Louisiana. She has continued her education in the criminal justice field, being certified in 2002 as a criminal justice specialist, with yearly re-certification by the American College of Forensic Counselors. Chairperson Robinson retired as Administrative Assistant with the Scott County Decategorization Program in 1999.

**KAREN KAPLAN MUELHAUPT**, Vice Chairperson, West Des Moines. Governor Thomas Vilsack appointed Muelhaupt to the Board of Parole in 1999. She was appointed Vice Chairperson in December, 2004, assuming that role in January, 2005. She received her BA degree from Drake University in 1988. She worked for the Department of Corrections as a Pre-sentence investigator from 1975-1985, after which she worked as a rape counselor with Polk County Victim Services. She co-created one of the Nation's first Homicide Crisis Response teams, and in 1997 was the recipient of the Presidential Crime Victims award. She retired in 1998. Muelhaupt is a licensed Social Worker.

**RICHARD S. BORDWELL**, Washington, Iowa. Bordwell was appointed to the Board of Parole in October, 2001. He has been in the private practice of law since graduating from law school. He received his B.S. degree from Iowa State and his J.D. degree from the University of Iowa. He has also served as a county attorney as a judicial magistrate. Bordwell retired as a Major from the U.S. Army Reserve.

**CURTIS S. JENKINS**, West Des Moines. Jenkins was appointed to the Board of Parole by Governor Terry Branstad in 1997. He was reappointed by Governor Thomas J. Vilsack in 2001. Jenkins has BS from Southern Illinois University. He is a member of the Corinthian Baptist Church, Kappa Alpha Psi Fraternity, Des Moines Alumni, and the KAPSI Foundation. Jenkins served in the United States Air Force. His volunteer work includes Internal Audit Committee and Tax Return Preparation for the Corinthian Baptist Church. He serves on the Board of Directors of OSACS Women Center and the Corinthian Gardens Apartments.

**BARBARA BINNIE**, Des Moines. Governor Thomas J. Vilsack appointed Binnie to the Board of Parole in 2002 to serve the remaining portion of the four-year term of a member who had resigned. Binnie had previously served on the Board from May 1985 until her retirement in December 1997. She is currently a member of the Association of Paroling Authorities International. Binnie retired from the Board in November, 2006.

**ALFREDO VALADEZ ALVAREZ** , J.D., is currently in full time private practice, focusing on risk management, estate law, employment law, mental health law, contracts, immigration and business/corporation law. He serves as counsel to health care providers, corporations, small businesses, and non-profits. Mr. Alvarez has served as Corporate Counsel and Director of Human Resources for Managed Health Care Systems, Inc., one of the largest regional medical and para-professional independent staffing providers of medical emergency departments and other health-related facilities. Mr. Alvarez also served as supervising attorney for Iowa Protection and Advocacy Services, Inc., advocating for persons with mental illnesses and physical disabilities. Prior to becoming an attorney, Mr. Alvarez worked for several non-profit agencies planning, designing, and implementing programs and services for persons with mental illnesses. He also was a case manager for the Iowa Department of Human Services in the Mental Health Unit for Polk County, Iowa. Mr. Alvarez has written, designed, and implemented several advocacy programs for persons with disabilities funded by the State of Iowa, the US Department of Education, the US Dept. of Health and Human Services, and the US Housing and Urban Development Department. He has been active in the mental health/medical field in both the public and private sectors for approximately 30 years. Mr. Alvarez is a member of the Iowa Bar Association, the Polk County Bar Association and the American Bar Association. Alvarez is also a Barrister in the Blackstone Inn of Court founded in London, England and comprised of other litigation attorneys and Judges. He has served or continues to serve on a variety of community boards and committees on the local, state and national levels. Alvarez was appointed to the Board of Parole by Governor Vilsack in November, 2006.

## **BOARD STAFF**

**Clarence Key, Jr.**, Executive Director. Key has served the Board since November of 1999. Key has a BA degree in Criminal Justice from Simpson College and has worked in state government for over twenty years. Mr. Key has served as a probation officer for the 5th Judicial District Department of Correctional Services, as an Assistant for Corrections (Prison Ombudsman) for the Citizen's Aide Ombudsman, and as a Justice System Analyst for the Division of Criminal and Juvenile Justice Planning. Key is a former executive board member of the Des Moines Branch of the NAACP and has been president of the Iowa Corrections Association (1993-1994). He has also been recently appointed to the Board of Trustees of the American Institute of Business College (AIB).

James C. Twedt, Senior Administrative Law Judge  
Daren Jacquez, Administrative Law Judge II  
Scott Hunter, Emergency Administrative Law Judge I  
Jerry Menadue, Liaison Officer (retired 12/06)  
Lori Rankin, Parole Liaison Officer  
Michael Schneider, Parole Liaison Officer  
Diane Jay, Statistical Research Analyst II  
Breanne Ward, Victim Coordinator  
Karen White, Administrative Secretary  
Tina Delong, Administrative Assistant I  
Andrea Arthurs, Administrative Assistant I  
Patricia Jay, Clerk  
Paul Stageberg, Ph.D., Report Consultant  
Lanette Watson, MPP, Report Consultant



## **IV. BOARD RESPONSIBILITIES**

***Inmate Reviews and Interviews.*** By law, the Board systematically reviews the status of each person committed to the custody of the Director of the Iowa Department of Corrections and considers the person's prospects for parole or work release. The Board reviews at least annually the status of persons other than Class A felons, Class B felons serving time under the 70% law, felons serving mandatory minimum sentences, and those serving determinate sentences. The Board also provides the person written notice of its parole or work release decision.

Not less than twenty days prior to conducting a hearing at which the Board interviews the person, the Board notifies the Department of Corrections regarding the interview schedule. The Department then makes the person available to the Board at his or her institutional residence.

***Risk Assessment.*** The Board has used offender risk assessment since March, 1981. Its use has enabled the Board to increase paroles while maintaining a high degree of public safety. An offender is rated on a scale from one to nine. In order to be granted parole, those receiving a parole risk score of one through six require three affirmative votes from the Board; a risk score of seven or eight requires four votes; and a risk score of nine requires all five votes.

***Victim Notification.*** The Board notifies registered victims of violent crimes of upcoming interviews with identified offenders and of decisions made at those interviews. The victim or appointed counsel has the right to attend the interviews and testify. In addition, all written communications from victims become a permanent part of offenders' files.

***Parole.*** The Board is empowered to grant, rescind, and revoke parole, as well as discharge offenders from parole. The Board decides the conditions of parole, which may be supplemented by the supervising Judicial District

***Work Release.*** The Board is empowered to grant or rescind work release. Work release periods are approximately six months, but may be adjusted through Board action.

***Review of Parole and Work Release Programs.*** The Board is required to review parole and work release programs being instituted or considered nationwide and determine which programs may be useful for Iowa. Each year the Board also reviews current parole and work release programs and procedures used in the State of Iowa.

***Release Studies.*** The Board is required to conduct studies of the parole and work release system as requested by the Governor and the General Assembly. The Board has fulfilled this responsibility in recent years by conducting recidivism studies of inmates released in FY90, FY96, FY98, and FY00. Returns to prison have been monitored yearly since FY98.

***Review of Computer System.*** The Board is required to increase utilization of data processing and computerization to assist in the orderly operation of the parole and work release system. The Board has joined the Department of Corrections in using the ICON system, which became operational in DOC institutions on 10/1/2004.

## ***BOARD WORKLOAD***

The information contained in this section provides a statistical summary of the Board's workload for FY07. As the tables and charts on the following pages indicate, the Board conducted a total of 14,571 release deliberations, up from 13,377 in FY06. These deliberations resulted in the Board's granting 3,408 paroles and 1,314 work releases. The majority of parole and work release grants were derived from case reviews rather than inmate interviews.

In FY07 the Board continued taking particular care in paroling inmates convicted of crimes against persons. While 23.3 percent of the 13,038 deliberations involving felons resulted in paroles, only 9.8 percent of those involving felonies against persons resulted in paroles. Those convicted of sex crimes were even less likely to be granted parole (4.3%).

Overall average time served from admission to parole rose slightly in FY07. The total average time served in FY07 rose by 1.1 months to 26.5 months from admission until approval for parole.

Parole revocation hearings totaled 1,464 in FY07, compared to 1,570 in FY06. Of the total hearings, 1,058 resulted in revocation of parole. One hundred twenty three of these were automatic revocations due to new convictions for felonies or aggravated misdemeanors, a decrease from 262 in FY06. The percentage of revocations due to new convictions dropped to 11.6 percent, compared to 22.6 percent the preceding year. Four hundred twenty five parolees were revoked to work release, up from 412 in FY06. An additional ten inmates were sent to violator programs.

On occasion the Board may rescind a grant of parole due to inmate misbehavior, failure to follow through in development of a parole plan, or new information that the Board did not have at the time of its releasing decision and at an inmate's request. In FY07 there were 296 rescissions, up from 263 in FY06.

Requests for restoration of citizenship dropped to 90, compared with 250 in FY06. Of these cases, there were 90 recommendations to the Governor for approval (100 percent). On July 4, 2005, Governor Vilsack signed Executive Order 42 that effectively removed the Board from the process of granting restoration of citizenship. The drop in requests thus stemmed directly from the change in state policy.

The Board also received 82 applications for pardon, of which 41 were recommended for approval.

The Board reviewed 21 appeals from inmates requesting reconsideration of prior decisions resulting from revocation hearings, up from 19 in FY06. None of these appeals was affirmed. Also, the number of offenders receiving simultaneous parole and discharge totaled 76. These offenders are typically within 30 days of the end of their sentences, have had no recent disciplinary reports, have low risk assessment scores, and are not serving sentences for felonies against persons. The Board has concluded that the short period remaining until expiration of sentence is insufficient for parole officers to verify parole plans or commence supervision.

The research division completed 5,833 offender risk assessments in FY07, a 39.5 percent increase from FY06. The Board makes consistent use of these assessments in determining whether to approve or deny parole or place inmates on work release.

Also, the victim coordinator reviewed 816 victim requests and mailed 3,205 notices to registered victims. Compared to FY06, requests were up and notices were down (673 requests and 4,023 notices). Registration requests have more than doubled since FY96. The total number of registered victims at the end of FY07 was 3,061 compared to 2,534 in FY06 (victims drop off the list as offenders are discharged).

The table and graphs on the following pages show the workload of the Board and staff members for FY07.

<b>Table 1. Performance Summary FY2006 and FY2007</b>			
	<b>FY2006</b>	<b>FY2007</b>	<b>% change</b>
<b>RELEASE DELIBERATIONS:</b>	13,377	14,571	8.9%
<b>INMATE INTERVIEWS</b>	2,627	2,815	7.2%
Paroles Granted	825	846	2.5%
Work Release Granted	266	332	24.8%
<b>CASE REVIEWS</b>	10,750	11,756	9.4%
Paroles Granted	3,262	2,562	-21.5%
Work Release Granted	946	982	3.8%
<b>REVOICATIONS/RESCISSIONS:</b>			
<b>PAROLE REVOCATION HEARINGS</b>	1,570	1,464	-6.8%
Parole Revocations	1,160	1,058	-8.8%
Automatic Revocations	262	123	-53.1%
<b>PAROLE RESCISSION REVIEWS</b>			
Paroles Rescinded	263	296	12.5%
<b>REVOCATION APPEALS</b>	19	21	10.5%
Affirmed	19	21	10.5%
Amended	0	0	0.0%
<b>EXECUTIVE CLEMENCY APPLICATIONS:*</b>			
<b>LIFER REVIEWS/REPRIEVES</b>	39	40	2.6%
Commutations/Reprieves Recommended	2	0	-100.0%
<b>PARDON REVIEWS</b>	31	82	164.5%
Pardons Recommended	18	41	127.8%
<b>RESTORATION OF CITIZENSHIP REVIEWS*</b>	250	90	-64.0%
Restorations Recommended	167	90	-46.1%
<b>OTHER REVIEWS:</b>			
Inmate Board Decision Appeals	179	541	202.2%
Parole to Discharge**	175	76	-56.6%
<b>OTHER BOARD WORK:</b>			
Risk Assessments Completed	4,182	5,833	39.5%
Registered Victims, Yearend	2,534	3,061	20.8%
Victim Registration Requests	673	816	21.2%
Victim Registrations Approved	480	619	29.0%
Victim Notices Mailed	4,023	3,205	-20.3%

\* Due to Executive Order, the Board of Parole no longer has responsibility for restoration of citizenship.

\*\*Actual releases, from ICON

### Deliberations and Releases, FY97-FY07

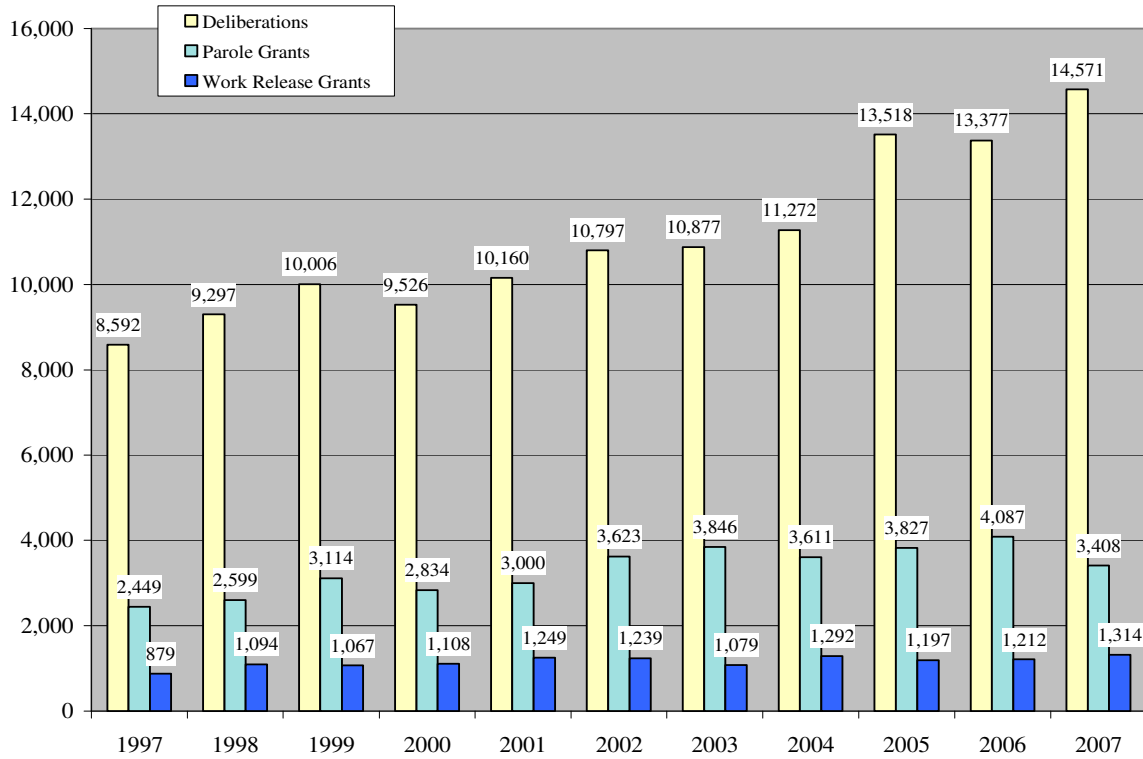


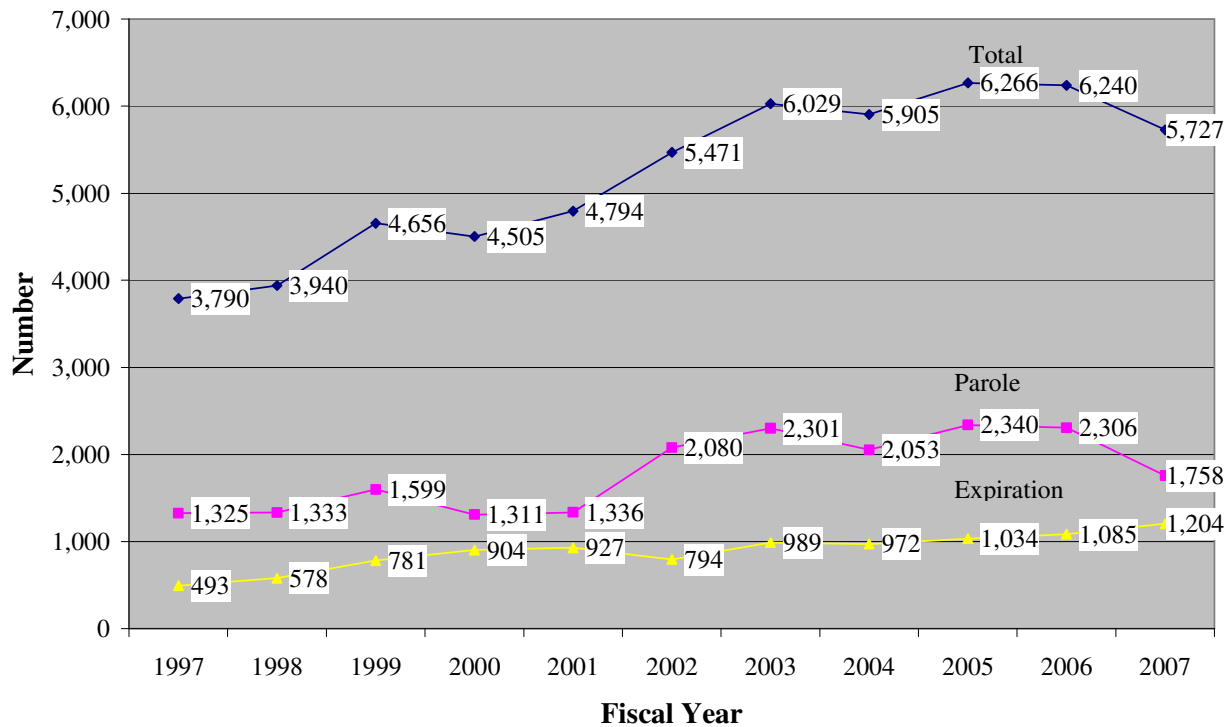
Table 2. Parole and Work Release Grants, FY97-FY07

Fiscal Year	1997	1998	1999	2000	2001	2002	2003	2004	2005	2006	2007	% Change
Deliberations	8,592	9,297	10,006	9,526	10,160	10,797	10,877	11,272	13,518	13,377	14,571	69.6%
Parole Grants	2,449	2,599	3,114	2,834	3,000	3,623	3,846	3,611	3,827	4,087	3,408	39.2%
Work Rel. Grants	879	1,094	1,067	1,108	1,249	1,239	1,079	1,292	1,197	1,212	1,314	49.5%

**Table 3. Decisions, by Offense Class, FY07**

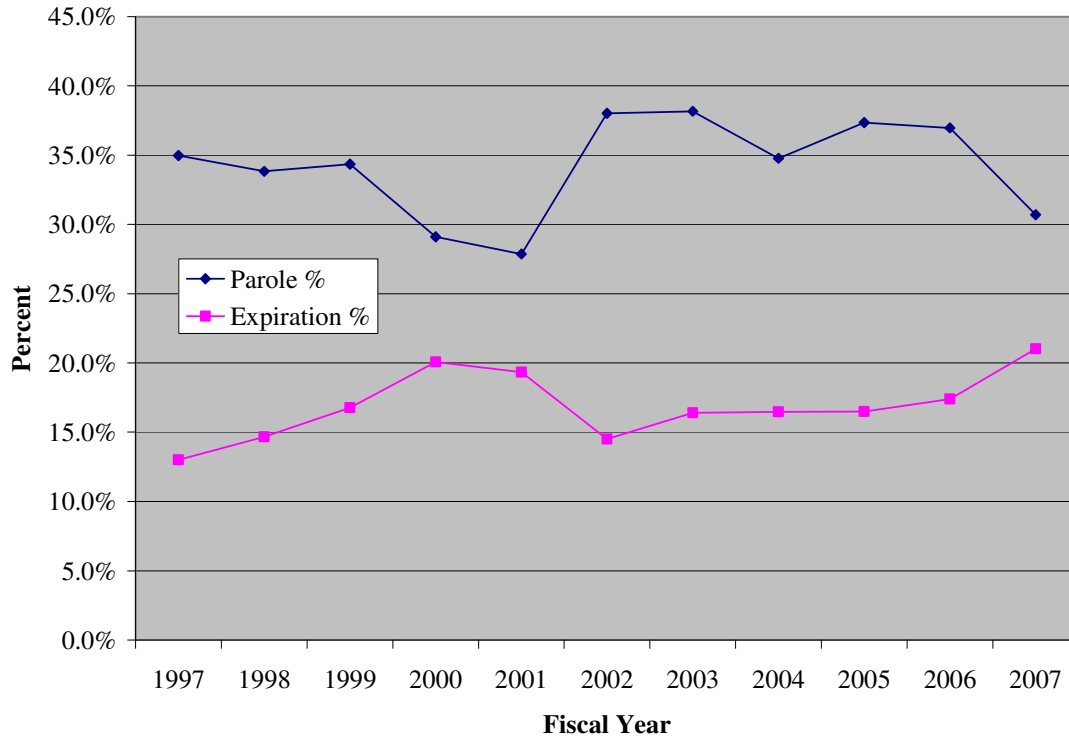
Offense Class	Decision						Total	
	Parole		Denied		Work Release			
	N	%	N	%	N	%	N	%
A felony	0	0.0%	55	100.0%	0	0.0%	55	0.4%
B felony 50-yr	0	0.0%	3	100.0%	0	0.0%	3	0.0%
B felony 70%	0	0.0%	11	100.0%	0	0.0%	11	0.1%
B felony	233	16.0%	1,100	75.4%	125	8.6%	1,458	10.0%
C felony 70%	49	23.0%	130	61.0%	34	16.0%	213	1.5%
C felony	878	19.7%	3,178	71.3%	403	9.0%	4,459	30.6%
D felony	1,717	29.3%	3,584	61.1%	560	9.6%	5,861	40.2%
Other felony	151	16.1%	654	69.8%	132	14.1%	937	6.4%
Old code	0	0.0%	22	100.0%	0	0.0%	22	0.2%
Special Sentence	10	55.6%	8	44.4%	0	0.0%	18	0.1%
Compact	0	0.0%	1	100.0%	0	0.0%	1	0.0%
<b>Total felonies</b>	<b>3,038</b>	<b>23.3%</b>	<b>8,746</b>	<b>67.1%</b>	<b>1,254</b>	<b>9.6%</b>	<b>13,038</b>	<b>89.5%</b>
Simple misd.	0	0.0%	1	100.0%	0	0.0%	1	0.0%
Agg. misd.	365	24.4%	1,073	71.7%	58	3.9%	1,496	10.3%
Serious misd.	5	15.2%	26	78.8%	2	6.1%	33	0.2%
Other misd.	0	0.0%	3	100.0%	0	0.0%	3	0.0%
<b>Total misd.</b>	<b>370</b>	<b>24.1%</b>	<b>1,103</b>	<b>72.0%</b>	<b>60</b>	<b>3.9%</b>	<b>1,533</b>	<b>10.5%</b>
<b>All crimes</b>	<b>3,408</b>	<b>23.4%</b>	<b>9,849</b>	<b>67.6%</b>	<b>1,314</b>	<b>9.0%</b>	<b>14,571</b>	<b>100.0%</b>

**Actual Releases, Paroles, and Expirations, FY97 - FY07**



Source: ACDS and ICON

## Paroles as a Percentage of All Releases



Source: ACDS and ICON

As is suggested in the chart above, expiration of sentence has played an increasing role as a means of exit from Iowa’s prison population<sup>1</sup>. This is due primarily to the Board’s belief that there are certain types of offenders from whom the public must be protected as long as possible. While the Board supports the concept of supervision after release from prison, it is thought that maintaining some offenders as long as possible in a secure environment will contribute to public safety. To illustrate the variation among offender types in release practices, Table 4 is presented below:

<sup>1</sup> It should be noted that in the charts above figures come from ICON, so the number of *releases* via parole does not coincide with the number of paroles *granted* by the Board.

**Table 4. Paroles, Expirations, and Work Releases, by Offense Class and Type, FY2007**

Offense Class and Type	Total N	Expiration		Parole		Work Release	
		N	%	N	%	N	%
A Felony	1	0	0.0%	1	100.0%	0	0.0%
B Felony-not persons	7	0	0.0%	3	42.9%	4	57.1%
B Felony-drug	171	2	1.2%	99	57.9%	70	40.9%
B Felony-persons	62	7	11.3%	10	16.1%	45	72.6%
B Felony-sex	19	15	78.9%	0	0.0%	4	21.1%
Habitual-not persons	83	9	10.8%	26	31.3%	48	57.8%
Habitual-persons	6	1	16.7%	1	16.7%	4	66.7%
Habitual-sex	1	1	100.0%	0	0.0%	0	0.0%
Other Felony-drugs	56	0	0.0%	26	46.4%	30	53.6%
Other Felony-70% sex	5	3	60.0%	0	0.0%	2	40.0%
Other Felony-sex	60	15	25.0%	6	10.0%	39	65.0%
Special Sentence	2	0	0.0%	1	50.0%	1	50.0%
C Felony-70%	73	10	13.7%	31	42.5%	32	43.8%
C Felony-not persons	314	75	23.9%	106	33.8%	133	42.4%
C Felony-drug	613	51	8.3%	348	56.8%	214	34.9%
C Felony-persons	100	22	22.0%	29	29.0%	49	49.0%
C Felony-sex	94	77	81.9%	1	1.1%	16	17.0%
D Felony-OWI	238	76	31.9%	91	38.2%	71	29.8%
D Felony-not persons	958	209	21.8%	457	47.7%	292	30.5%
D Felony-drug	368	71	19.3%	196	53.3%	101	27.4%
D Felony-persons	202	68	33.7%	73	36.1%	61	30.2%
D Felony-sex	25	15	60.0%	2	8.0%	8	32.0%
<b>Felonies-not persons</b>	<b>2,881</b>	<b>503</b>	<b>17.5%</b>	<b>1,383</b>	<b>48.0%</b>	<b>995</b>	<b>34.5%</b>
<b>Felonies-persons</b>	<b>371</b>	<b>98</b>	<b>26.4%</b>	<b>114</b>	<b>30.7%</b>	<b>159</b>	<b>42.9%</b>
<b>Felonies-sex</b>	<b>204</b>	<b>126</b>	<b>61.8%</b>	<b>9</b>	<b>4.4%</b>	<b>69</b>	<b>33.8%</b>
<b>Total Felonies</b>	<b>3,458</b>	<b>727</b>	<b>21.0%</b>	<b>1,507</b>	<b>43.6%</b>	<b>1,224</b>	<b>35.4%</b>
Aggravated Misd.-OWI	26	16	61.5%	8	30.8%	2	7.7%
Agg. Misd.-not persons	492	253	51.4%	208	42.3%	31	6.3%
Agg. Misd.- persons	196	153	78.1%	29	14.8%	14	7.1%
Agg. Misd.-sex	28	27	96.4%	1	3.6%	0	0.0%
Serious Misd.-OWI	5	4	80.0%	1	20.0%	0	0.0%
Serious Misd- not persons	13	9	69.2%	4	30.8%	0	0.0%
Serious Misd.-persons	15	15	0.0%	0	0.0%	0	0.0%
Serious Misd.-sex	0	0	0.0%	0	0.0%	0	0.0%
<b>Misd.-not persons</b>	<b>536</b>	<b>282</b>	<b>52.6%</b>	<b>221</b>	<b>41.2%</b>	<b>33</b>	<b>6.2%</b>
<b>Misd.-persons</b>	<b>211</b>	<b>168</b>	<b>79.6%</b>	<b>29</b>	<b>13.7%</b>	<b>14</b>	<b>6.6%</b>
<b>Misd.-sex</b>	<b>28</b>	<b>27</b>	<b>96.4%</b>	<b>1</b>	<b>3.6%</b>	<b>0</b>	<b>0.0%</b>
<b>Total Misdemeanors</b>	<b>775</b>	<b>477</b>	<b>61.5%</b>	<b>251</b>	<b>32.4%</b>	<b>47</b>	<b>6.1%</b>
<b>Total</b>	<b>4,233</b>	<b>1,204</b>	<b>28.4%</b>	<b>1,758</b>	<b>41.5%</b>	<b>1,271</b>	<b>30.0%</b>

Source: ICON



Due to the provisions of Iowa Code chapter 914, a person convicted of a criminal offense has the right to make application for executive clemency to the Governor of Iowa. The Governor requests that the Board of Parole make a recommendation regarding these applications. Requests for restoration of citizenship may also be submitted directly to the Board of Parole within sixty days of discharge from supervision. All applications for commutation, pardons, special restoration of citizenship (firearms), restoration of citizenship (after the Board's sixty day time frame) must be submitted to the Governor's office, which then forwards the applications on to the Board for review. Table 5 shows activity in this area for FY07. Note that a number of applications may be pending at any given time, so the total number of applications shown in the table may not equal the number of approvals plus denials.

**Table 5. Executive Clemency, FY07**

Application Type	Received	Board Recommendation	
		Grant	Deny
Pardon	82	41	41
Special Citizenship (firearms)	107	59	48
Restoration of Citizenship	90	90	0
<b>Total</b>	<b>282</b>	<b>189</b>	<b>85</b>

Note: Grants and denials may not equal the number received due to carryover.

## **V. IOWA COMMUNICATIONS NETWORK**

On July 14, 1994, the Board began to make use of the new Iowa Communications Network (ICN) to manage the State's prison population more effectively and efficiently.

The ICN is a statewide two-way full motion fiber optic communication network that uses modern technology to connect points throughout all of Iowa's ninety-nine counties. This network facilitates a variety of Board functions including parole interviews, registered victim input, and parole revocation hearings. Further, the ICN has allowed criminal justice students and the public to observe actual interviews of inmates being considered for parole or work release.

Iowa is the first state in the Nation to use its fiber optics system for monthly parole interviews. Since its initial use of the system in July of 1994, the Board experienced few difficulties with the ICN; the benefits (i.e., cost effectiveness, reduced travel time, and ease of use) have generated positive reactions from the Board, the media, the public, and other states. Inmates and family members have also expressed support for participation in the interview process via the ICN.

With the completion of its own classroom in October, 1995, the Board greatly increased its use of the ICN in the parole process. The Board no longer needs to prepare volumes of inmate files for transport to an ICN classroom; files are reviewed from the Board's conference room. Thus, transportation and security concerns regarding inmate files have been greatly reduced.

Prior to ICN, victims desiring input were required to travel to distant institutions, were subjected to a rigorous security check, and were possibly seated in the same room as the inmate's family and friends. With the creation of the Board's TeleVictim Program, a registered victim is notified of the intended release hearing and is directed to an ICN site near the victim's home. The victim travels to the local site, provides input, and returns home. The process often requires a few minutes instead of many hours under the old process. Further, the ICN separates victims from inmates, families, and friends and helps defuse potentially tense situations. The incorporation of the registered victim input process via the ICN continues to be a model for parole board interaction with registered victims.

Approximately 6,250 parole and probation revocation hearings have been conducted via the ICN since July of 1994. Prior to the creation of the ICN, parole revocation hearings required travel to counties where the alleged parole violation occurred, which could involve as many as four hours of travel one-way. With the advent of ICN, the parole judge travels to a nearby ICN classroom, conducts the hearings, determines violations and appropriate sanctions, and proceeds to the next case. All the 1,464 ICN revocation hearings conducted in FY07 involved parolees. This continues to represent a high historic number of hearings from previous years, with the Board maintaining two full-time Administrative Law Judges for most of the fiscal year.

The Board has also utilized the ICN for a number of special projects, including statewide meetings of registered victims and training of parole and probation officers and local public defenders.

The Board's Video Project has utilized the location of current video technology in selected Iowa courthouses (Linn County, Polk County,) along with the Polk County Jail, Interim Jail, and The Newton Correctional Facility.

At the present time, the TeleJustice Courtroom is used primarily for Parole Revocation Hearings, eliminating considerable travel throughout the State. In FY07, 4,245 individuals attended ICN hearings, saving travel for many while also facilitating participation. Savings resulting from ICN usage in FY07 amounted to \$119,858.74 with approximately 488 hours of travel time saved, along with 29,255 miles of travel.

The Board plans continued use of such technological advances as the ICN as it strives to protect the public from serious crime and manage the state's increasing prison population. The Board is currently reviewing the new video over IP (video over internet) to determine its feasibility for use by the Board.

## VI. TIME SERVED PRIOR TO PAROLE DECISION

A number of factors influence the amount of time individuals spend incarcerated prior to release on parole. The most obvious of these is the inmate's maximum term of incarceration, which in Iowa is set by statute. There appears to be some public misunderstanding of prison terms in Iowa, in part because of the indeterminate nature of the State's sentencing structure. Three groups set terms of incarceration in Iowa:

- **the Legislature**, which establishes maximum terms of incarceration and may choose to require either mandatory incarceration or a mandatory minimum term of incarceration, or both;
- **judges**, who in sentencing determine who is incarcerated and who is not (and after imprisonment may choose to release an offender on "shock probation"); and
- **the Board of Parole**, which determines when offenders may be released on work release and/or parole.

Indeterminate sentencing is also misunderstood because when a judge sentences an offender to a specific term -- say, ten years of incarceration -- the sentence, absent a mandatory minimum, is actually zero-to-ten years, and the offender may be legally paroled at any time after reception by the prison system. Additionally, under Iowa's "good time" statute, most offenders' sentences are also reduced by about half by good behavior in the prison system, so most ten-year sentences will expire in about five years.

Legislation was passed in 2005 pertaining to a number of criminal offenses, with several of these expected to have a significant impact on the prison population. The most significant of these will eventually affect the number of incarcerated sex offenders in Iowa, as it reclassified some Lascivious Acts offenses (Iowa Code 709.8) from Class D to Class C felonies. Another provision in the same legislation created a new Class A felony for repeat sex offenders. While these changes are not likely to affect the prison population for several years, it is estimated that their impact will eventually be substantial.

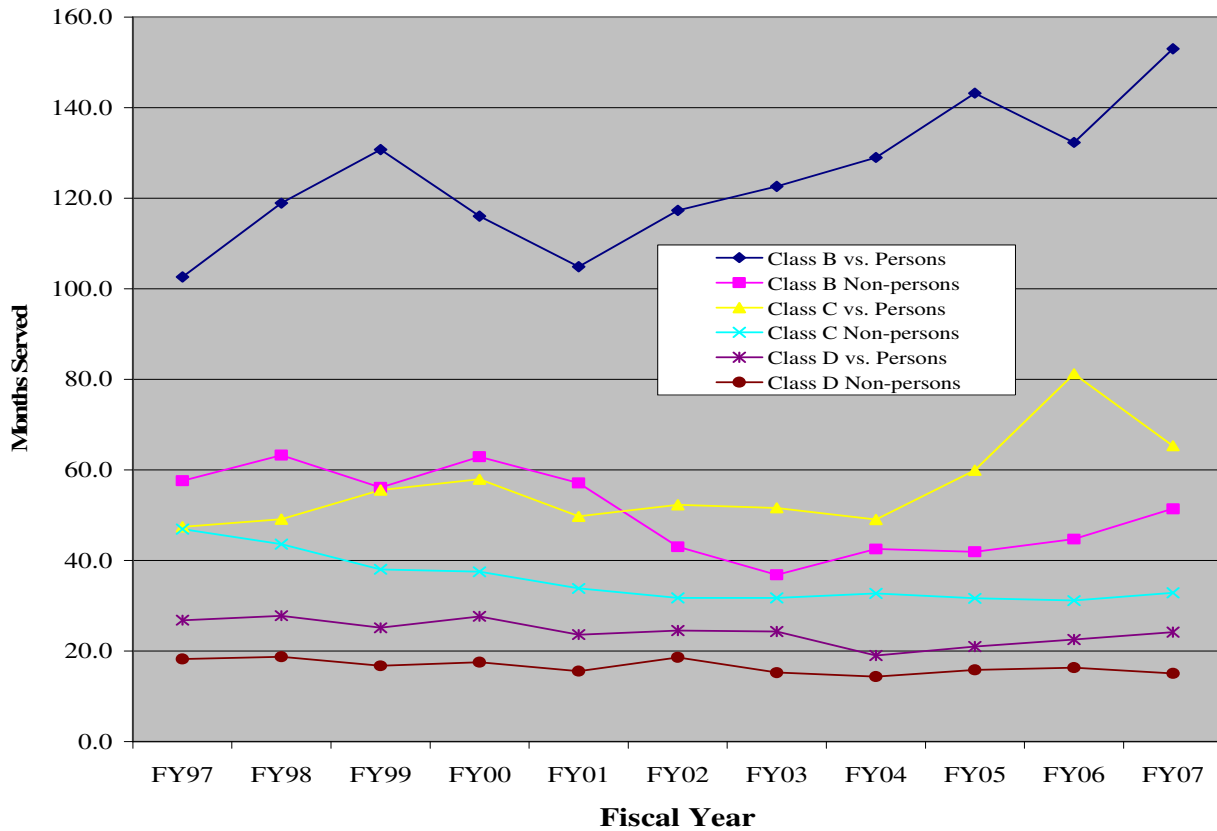
Another factor influencing the size of the prison population has been the Board's increasing caution in releasing inmates who may pose a threat to society. The use of risk assessment in release deliberations has had two distinct effects: to hasten release of good risks who do not need to be incarcerated for reasons of public safety; and to delay release of bad risks who present a threat to society

Table 6 presents an overview of paroling activity during FY07, showing the amount of time served prior to parole for all offenses accounting for twelve or more paroles. Readers interested in offenses not on the table are urged to consult Table 7, which presents all offenses for which there were paroles in FY07.

**Table 6. Months Served to Parole Approval, Most Common Offenses, FY07**

Class	Drug Offenses	Code	N	Months Served		
				Mean	Min.	Max.
Ofel	Cont Subst-2nd or Subseq-3X Penalty Enh	124.411	40	52.3	15.0	172.4
Bfel	Proh. Acts/Contr., Sim Sub	124.401(1B)	127	59.4	22.2	138.9
Cfel	Possession of a Controlled Substance	124.401(1C)	235	51.7	22.5	177.4
Dfel	Failure to Affix a Tax Stamp	453B.12	23	21.8	3.5	60.4
Dfel	Proh Acts-Poss Product Intended For Mfg Any Cont Subst	124.401(4)	31	18.9	2.3	24.3
Bfel	Proh Acts-Mfg, Del, Consp or Poss w/Int-Meth>5gm but<5kg	124.401(1)(b)(7)	36	22.0	10.8	31.2
Cfel	Proh Acts-Mfg, Del, Consp or Poss w/Int-Cocaine LT 500gm	124.401(1)(c)(2)(b)	25	12.9	4.0	23.2
Cfel	Proh Acts-Mfg, Del, Consp, or Poss w/Int-Meth LT 5 gm	124.401(1)(c)(6)	236	17.7	2.0	136.4
Cfel	Proh Acts-Mfg, Del, Consp or Poss w/Int-Cocaine LT 5gm	124.401(1)(c)(3)	45	17.4	6.0	30.2
Dfel	Proh Acts-Poss Prod Int for Mfg Cont Subst-Pseudoeph.	124.401(4)(b)	21	12.0	2.6	28.4
Dfel	Proh Acts-Poss w/o Prescription - 3rd and subsequent	124.401(5)(c)	89	16.5	2.3	96.3
Dfel	Proh Acts-Mfg, Del, Consp or Poss-Marij LT 50 kg	124.401(1)(d)(2)	90	14.2	2.1	97.9
Agg	Proh Acts-Poss w/o Prescription - 2nd Offense	124.401(5),B	30	5.6	1.8	12.6
Class	Other Offenses	Code	N	Mean	Min.	Max.
Dfel	Receiving or Transporting Firearm - Felon	724.26	34	21.6	7.0	141.9
Dfel	Eluding	321.279(3)	25	17.6	2.7	93.1
Dfel	OWI - Third or subsequent	321J.2(C)	545	11.1	1.3	101.4
Agg.	Driving While Barred	321.561	56	7.0	2.5	26.1
Agg.	OWI - Second Offense	321J.2(B)	72	4.8	2.3	11.0
Agg.	Prostitution	725.1	16	4.3	1.8	9.0
Class	Crimes Against Property	Code	N	Mean	Min.	Max.
Ofel	Habitual Offender - property	902.8,B	73	60.9	10.4	326.6
Cfel	Burglary 2nd Degree	713.5	74	36.8	3.8	233.6
Cfel	Theft 1st Degree	714.2(1)	106	37.3	4.9	152.1
Cfel	Arson 2nd Degree	712.3	17	38.7	16.3	113.4
Dfel	Burglary 3rd Degree	713.6A	214	18.9	1.7	100.2
Dfel	Forgery	715A.2(A)	107	23.6	1.8	125.8
Dfel	Theft 2nd Degree	714.2(2)	146	15.0	1.6	132.7
Dfel	Criminal Mischief 2nd Degree	716.4	22	16.1	2.5	45.7
Dfel	Forgery	715A.2(2)a	132	10.9	1.7	65.2
Agg.	Theft 3rd Degree	714.2(3)	40	5.7	0.8	22.4
Agg.	Operate Motor Vehicle w/o Consent	714.7	17	14.4	2.3	104.7
Agg.	Burglary 3rd Degree	713.6A(2)	18	6.1	2.4	24.2
Class	Crimes Against Persons	715A.2(B)	N	Mean	Min.	Max.
Bfel	Murder 2nd Degree	707.3	13	202.4	170.5	248.8
Bfel	Robbery 1st Degree	711.2	18	157.7	108.1	205.3
Bfel	Burglary 1st Degree	713.3 - 713.2	12	94.7	49.2	193.8
CF70	Robbery 2nd Degree 85%	711.3	49	89.0	78.1	115.7
Cfel	Conspiracy to Commit Forcible Felony	706.3,A	14	47.1	15.4	117.5
Cfel	Willful Injury - Causing Serious Injury	708.4(1)	15	43.5	24.7	81.4
Ofel	Lascivious Acts W/Child-Supervision	709.8(4)	21	31.9	17.4	60.7
Dfel	Assault while Participating in Felony	708.3,B	12	32.9	7.6	106.0
Dfel	Willful Injury - Causing Bodily Injury	708.4(2)	29	25.9	6.2	90.4

**Average Time Served Until Release Decision FY97-FY07, by Class**



The chart above presents some interesting findings, as it illustrates both the Board’s concern with public safety and its response to a rising prison population. Examination of the Class C felonies shows most clearly that, over the period, the Board has shown increasing caution in releasing violent offenders while making efforts to reduce time served for non-violent felons. Prior to FY98, for example, there was little difference in average time served for Class C felons against persons and not against persons. Since that time, however, there has been a divergence in time served, as the average for Class C felonies not against person has dropped while that for C felonies against persons has crept up.

Table 7, on the pages following, presents a complete itemization of paroles for FY07, listing the felony class, the specific offense, whether or not consecutive sentences were involved, the number of paroles approved during the year, and the mean, minimum, and maximum periods from admission to parole approval. In an effort to avoid redundancy the table does not list a total separately when all of the paroles for a certain offense either did or did not involve consecutive sentences. For example, the paroles for Class B Delivery of Cocaine (124.401(1)(b)(3)) did not involve consecutive sentences, so the column for consecutive sentences notes “N/total” to note that the numbers for the total and for the non-consecutive sentence category were the same.

<b>Table 7. Months served Prior to Parole Approval, FY07</b>							
<b>Class</b>	<b>Offense Description</b>	<b>Code</b>	<b>Consec</b>	<b>N</b>	<b>Mean</b>	<b>Min</b>	<b>Max</b>
<b>Bfel</b>	Arson-1st Degree	712.2	Y/Total	1	173.0	173.0	173.0
	Attempt to Commit Murder	707.11	N	1	133.4	133.4	133.4
			Y	1	173.1	173.1	173.1
			Total	2	153.3	133.4	173.1
	Burglary-1st Degree	713.2	N/Total	1	78.1	78.1	78.1
			N	10	77.4	49.2	129.5
				2	181.7	169.5	193.8
			Total	12	94.7	49.2	193.8
	Criminal Transmission of HIV	709C.1	N/Total	1	76.4	76.4	76.4
	Dist/Poss. w/Int. to Dist Sched. I, II Persons Under 18- Mandatory Min 5 yrs	124.406(1A)	N	3	26.9	24.4	28.7
			Y	1	96.1	96.1	96.1
			Total	4	44.2	24.4	96.1
	Kidnapping-2nd Degree	710.3	N	1	137.0	137.0	137.0
			Y	2	256.3	167.9	344.6
			Total	3	216.5	137.0	344.6
	Murder-2nd Degree	707.3	N	11	204.8	170.5	248.8
			Y	2	189.3	188.9	189.7
			Total	13	202.4	170.5	248.8
	Proh. Acts-Mfg, Del, Consp. or Poss. w/Int-Cocaine GT 5 gm but LT 50 gm	124.401(1)(b)(3)	N/Total	2	16.5	11.2	21.8
	Proh. Acts-Mfg, Del, Consp. or Poss. w/Int-Cocaine>5 kg	124.401(1)(a)(2)(b)	N/Total	1	18.9	18.9	18.9
	Proh. Acts-Mfg, Del, Consp. or Poss. w/Int-Cocaine>100 gm LT 500 gms	124.401(1)(b)(2)(b)	N/Total	1	24.2	24.2	24.2
Proh. Acts-Mfg, Del, Consp. or Poss. w/Int-Meth>5 gm but<5 kg	124.401(1)(b)(7)	N	35	21.8	10.8	31.2	
		Y	1	27.5	27.5	27.5	
		Total	36	22.0	10.8	31.2	
Proh. Acts/Contr., CF, Sim. Substance.	204.401(1B)	N/Total	1	138.0	138.0	138.0	
Proh. Acts/Contr. Sim. Substance.	124.401(1B)	N	99	53.7	22.2	138.9	
		Y	28	79.6	30.2	135.7	
		Total	127	59.4	22.2	138.9	
Robbery-1st Degree	711.2	N	7	151.0	127.8	203.5	
		Y	11	161.9	108.1	205.3	
		Total	18	157.7	108.1	205.3	
Sexual Abuse-2nd Degree	709.3	N	1	116.3	116.3	116.3	
		Y	1	174.6	174.6	174.6	
		Total	2	145.4	116.3	174.6	
Vehicle Homicide/OWI	707.6A(1)	N/Total	1	101.7	101.7	101.7	
Ongoing Criminal Conduct	706A.4	N	4	41.8	23.5	57.7	
		Y	3	61.7	40.7	87.4	
		Total	7	50.3	23.5	87.4	
<b>Total</b>	<b>B Felonies</b>	<b>Total</b>	<b>N</b>	<b>180</b>	<b>62.6</b>	<b>10.8</b>	<b>248.8</b>
			<b>Y</b>	<b>53</b>	<b>114.9</b>	<b>27.5</b>	<b>344.6</b>
			<b>Total</b>	<b>233</b>	<b>74.5</b>	<b>10.8</b>	<b>344.6</b>

<b>Class</b>	<b>Offense Description</b>	<b>Code</b>	<b>Consec</b>	<b>N</b>	<b>Mean</b>	<b>Min</b>	<b>Max</b>
<b>Ofel</b>	Contr. Substance-2nd or Sub 3X Penalty Enhanced	124.411	N	28	50.2	15.0	172.4
			Y	12	57.3	21.2	129.9
			Total	40	52.3	15.0	172.4
	Distribute Contr. Substance School/Park-Add 5 Years	124.401A	N	3	30.9	19.4	40.0
			Y	2	117.2	99.3	135.1
			Total	5	65.4	19.4	135.1
	Habitual Offender-Person	902.8,A	Y/Total	1	82.1	82.1	82.1
	Habitual Offender-Property	902.8,B	N	56	53.4	10.4	271.7
			Y	17	85.5	17.0	326.6
			Total	73	60.9	10.4	326.6
	Lascivious Acts w/Child-Supervision	709.8(4)	N	19	29.5	17.4	58.5
Y			2	55.2	49.7	60.7	
Total			21	31.9	17.4	60.7	
Mfg. Meth.-Minors Present	124.401C	N/Total	2	40.8	30.3	51.3	
Proh. Acts-Firearm-Poss./Control- 2X Penalty Enhanced	124.401(1E)	N	5	46.2	12.2	90.6	
		Y	1	35.0	35.0	35.0	
		Total	6	44.3	12.2	90.6	
Robbery w/Aggravation	711.2	N/Total	1	386.9	386.9	386.9	
Sexual Predator-Comm. Supervision	901A.2(7)	Y/Total	1	26.0	26.0	26.0	
Sexual Predator-Prior Convict	901A.2(1),B	Y/Total	1	44.4	44.4	44.4	
<b>Total</b>	<b>Other Felonies</b>	<b>Total</b>	<b>N</b>	<b>114</b>	<b>50.4</b>	<b>10.4</b>	<b>386.9</b>
			<b>Y</b>	<b>37</b>	<b>72.3</b>	<b>17.0</b>	<b>326.6</b>
			<b>Total</b>	<b>151</b>	<b>55.8</b>	<b>10.4</b>	<b>386.9</b>



Class	Offense Description	Code	Consec	N	Mean	Min	Max
Cfel	Arson-2nd Degree	712.3	N	11	32.6	16.6	45.9
			Y	6	49.9	16.3	113.4
			Total	17	38.7	16.3	113.4
	Attempt Burglary-1st Degree	713.4	N/Total	1	24.2	24.2	24.2
			Total	1	24.2	24.2	24.2
	Burglary-2nd Degree	713.3	N	4	32.8	25.2	42.1
			Y	4	49.3	30.6	98.9
			Total	8	41.1	25.2	98.9
		713.5	N	54	28.7	3.8	105.4
			Y	20	58.5	9.2	233.6
			Total	74	36.8	3.8	233.6
	Child Endangerment-Serious Injury	726.6(2)	N/Total	4	48.0	45.0	52.0
	Conspiracy/Commit Forcible Felony	706.1,A	N/Total	2	45.7	19.8	71.6
			N	5	26.7	15.4	40.7
			Y	9	58.5	23.6	117.5
	706.3,A	Total	14	47.1	15.4	117.5	
		Conspire Recruit Person Under 18 to Deliver, Mfg Sched. I, II, III, IV	124.406A	N/Total	2	15.1	12.1
	Criminal Mischief-1st Degree	716.3	N	6	16.2	3.0	47.6
			Y	3	38.0	18.0	59.0
			Total	9	23.4	3.0	59.0
	Enticing Away a Child	710.10(1)	N/Total	1	24.9	24.9	24.9
		710.10(2)	N/Total	1	12.9	12.9	12.9
	Fraudulent Practice-1st Degree	714.9	N/Total	2	4.0	4.0	4.0
	Intimidation w/Dangerous Weapon	708.6(1)	N/Total	3	19.0	12.1	28.7
	Kidnapping-3rd Degree	710.4	Y/Total	2	84.1	61.9	106.4
	Money Laundering Activities	706B.2(1)	N/Total	1	10.3	10.3	10.3
	Neglect or Abandonment	726.3	N	3	21.1	14.0	24.7
			Y	1	33.5	33.5	33.5
			Total	4	24.2	14.0	33.5
	Poss. Controlled Substance	124.401(1C)	N	127	45.5	16.2	177.4
			Y	113	57.9	24.6	130.0
Total			240	51.4	16.2	177.4	
Poss. of Explosives	712.6	N/Total	1	11.9	11.9	11.9	
Precursor Substance Violation	124B.9	N/Total	1	19.6	19.6	19.6	
Prescription Drug Viol-To Minor	155A.24,3	Y/Total	1	38.9	38.9	38.9	
Proh. Acts-Mfg, Del, Consp. or Poss. w/Int.-Cocaine LT 500 gm	124.401(1)(c)(2)(b)	N	24	13.0	4.0	23.2	
		Y	1	10.6	10.6	10.6	
		Total	25	12.9	4.0	23.2	
Proh. Acts-Mfg, Del, Consp. or Poss. w/Int.-Cocaine LT 5 gm	124.401(1)(c)(3)	N	40	17.7	6.0	30.2	
		Y	5	15.4	11.2	19.1	
		Total	45	17.4	6.0	30.2	
Proh. Acts-Mfg, Del, Consp. or Poss. w/Int.- Marij GT 50 kg but LT 100 kg	124.401(1)(c)(5)	N/Total	1	12.7	12.7	12.7	

<b>Class</b>	<b>Offense Description</b>	<b>Code</b>	<b>Consec</b>	<b>N</b>	<b>Mean</b>	<b>Min</b>	<b>Max</b>
<b>Cfel</b>	Proh. Acts-Mfg, Del, Consp, or Poss. w/Int.-Amph. LT 5 gm	124.401(1)(c)(7)	N/Total	1	12.8	12.8	12.8
	Proh. Acts-Mfg, Del, Consp, or Poss. w/Int.-Meth. LT 5 gm	124.401(1)(c)(6)	N Y Total	183 53 236	17.2 19.5 17.7	2.0 2.4 2.0	59.9 136.4 136.4
	Proh. Acts-Mfg, Del, Consp, or Poss. w/Int.-Other Subst. Sched. I, II, III	124.401(1)(c)(8)	N Y Total	10 1 11	15.5 3.9 14.5	4.3 3.9 3.9	33.5 3.9 33.5
	Proh. Acts - Mfg, Del, Consp or Poss. w/Int. - Cocaine LT 10 gm	124.401(1)(c)(3)	N Y Total	4 2 6	11.2 12.0 11.5	3.4 6.1 3.4	19.6 17.8 19.6
	Reckless Use Firearm-Serious Injury	724.30(1)	N Y Total	2 1 3	37.0 92.0 55.3	24.2 92.0 24.2	49.7 92.0 92.0
	Recv. Precursor Subst./Mfg CS	124B.9(2)	Y/Total	1	44.8	44.8	44.8
	Robbery-2nd Degree	711.3	N Y Total	40 9 49	87.7 94.7 89.0	78.1 81.0 78.1	107.7 115.7 115.7
	Sexual Abuse-3rd, Not Forcible Felony	709.4(2C,4)	N/Total	2	41.5	40.4	42.5
	Sexual Abuse-3rd	709.4	N Y Total	3 7 10	35.1 81.6 67.6	23.3 53.8 23.3	48.9 107.1 107.1
	Terrorism-w/Int. to Injure or Provoke	708.6,A	N Y Total	2 2 4	41.7 61.5 51.6	30.6 30.9 30.6	52.8 92.2 92.2
	Theft-1st Degree	714.2(1)	N Y Total	62 44 106	28.7 49.5 37.3	4.9 7.1 4.9	69.2 152.1 152.1
	Unauth. Use of Credit Card>\$10K	715A.6(2)(A)	N/Total	1	12.7	12.7	12.7
	Using Juvenile Commit Indictable Off	709A.6	Y/Total	1	53.4	53.4	53.4
	Veh. Homicide/Under Infl. or Reckless	707.6A(1)	N/Total	4	47.3	46.0	48.6
	Veh. Homicide/Reckless or Eluding	707.6A(2)	N Y Total	2 4 6	46.1 77.4 67.0	44.5 68.5 44.5	47.6 95.0 95.0
	Voluntary Manslaughter	707.4	N Y Total	1 2 3	38.4 99.1 78.9	38.4 69.2 38.4	38.4 129.1 129.1
	Willful Injury	708.4	N Y Total	4 5 9	34.5 102.5 72.3	27.6 92.4 27.6	44.8 109.7 109.7
	Willful Injury-Serious Injury	708.4(1)	N Y Total	9 6 15	33.9 57.9 43.5	24.7 44.3 24.7	42.9 81.4 81.4
<b>Total</b>	<b>C Felonies</b>	<b>Total</b>	<b>N Y Total</b>	<b>624 303 927</b>	<b>31.1 51.2 37.7</b>	<b>2.0 2.4 2.0</b>	<b>177.4 233.6 233.6</b>

<b>Class</b>	<b>Offense Description</b>	<b>Code</b>	<b>Consec</b>	<b>N</b>	<b>Mean</b>	<b>Min</b>	<b>Max</b>
<b>SpecSen</b>	Special Supervision Sentence Dfel or Misdemeanors/10 yrs parole	903B.2	N/Total	10	5.6	0.0	12.3
<b>Total</b>	<b>Special Sentence</b>	<b>Total</b>	<b>N/Total</b>	<b>10</b>	<b>5.6</b>	<b>0.0</b>	<b>12.3</b>
<b>Class</b>	<b>Offense Description</b>	<b>Code</b>	<b>Consec</b>	<b>N</b>	<b>Mean</b>	<b>Min</b>	<b>Max</b>
<b>Dfel</b>	Assault-Serious Injury	708.2(4)	N	2	9.3	8.5	10.1
			Y	1	79.2	79.2	79.2
			Total	3	32.6	8.5	79.2
	Assault Injury-Peace Off/Others	708.3A(1)	N/Total	1	20.5	20.5	20.5
	Assault w/Weapon-Peace Off/Others	708.3A(2)	N	2	20.2	16.8	23.7
			Y	1	19.6	19.6	19.6
			Total	3	20.0	16.8	23.7
	Assault While Participating in Felony	708.3,B	N	5	15.5	7.6	37.1
			Y	7	45.3	12.2	106.0
			Total	12	32.9	7.6	106.0
	Attempted Burglary-2nd Degree	713.6	N	7	8.9	4.1	13.0
			Y	3	11.9	9.0	16.3
			Total	10	9.8	4.1	16.3
	Burglary-3rd Degree	713.6A	N	157	16.1	2.3	97.7
			Y	57	26.7	1.7	100.2
			Total	214	18.9	1.7	100.2
	Carrying Weapons-School	724.4B(1)	N/Total	1	7.6	7.6	7.6
	Child Endangerment/Bodily Injury	726.6(2A)	N/Total	2	16.7	12.9	20.5
	Child Endangerment/Bodily Injury	726.6(5)	Y/Total	1	31.6	31.6	31.6
	Conspiracy Commit Felony-Person	706.3,B	N	1	14.2	14.2	14.2
			Y	2	41.3	37.9	44.8
			Total	3	32.3	14.2	44.8
	Conspiracy Commit Felony-Property	706.3,C	N	3	7.4	7.1	7.8
			Y	4	33.7	12.4	42.7
			Total	7	22.5	7.1	42.7
	Conspiracy Commit Non-Forcible Fel.	706.1,B	N/Total	3	11.3	6.7	16.4
	Criminal Gang Participation	723A.2	N/Total	1	12.7	12.7	12.7
Criminal Mischief-2nd Degree	716.4	N	16	13.6	2.5	29.5	
		Y	6	22.6	10.9	45.7	
		Total	22	16.1	2.5	45.7	
Domestic Abuse Assault-3rd or Sub	708.2A(4)	N	9	20.9	13.0	41.7	
		Y	2	29.0	22.1	35.8	
		Total	11	22.4	13.0	41.7	
Eluding	321.279(3)	N	23	17.6	2.7	93.1	
		Y	2	17.1	15.6	18.6	
		Total	25	17.6	2.7	93.1	
Escape of Felon	719.4(1)	N/Total	4	15.2	4.9	22.7	
Extortion	711.4	N	2	8.1	7.8	8.4	
		Y	3	23.9	7.8	48.6	
		Total	5	17.6	7.8	48.6	

Class	Offense Description	Code	Consec	N	Mean	Min	Max
Dfel	Failure to Affix Tax Stamp	453B.12	N	18	19.6	3.5	60.4
			Y	5	29.7	6.7	54.5
			Total	23	21.8	3.5	60.4
	Failure to Appear Felony Charge	811.2(8),A	N	4	12.1	3.7	16.9
			Y	1	31.9	31.9	31.9
			Total	5	16.1	3.7	31.9
	False Reports	712.7	N/Total	1	16.7	16.7	16.7
	Falsifying Public Doc	718.5	N/Total	2	43.5	6.7	80.3
	Flee State to Avoid Prosecution	719.4(4)	N/Total	1	15.5	15.5	15.5
	Forge/Alter/Counterfeit/Lotto Ticket	099E.18(4)	N	2	8.2	3.4	12.9
			Y	1	25.1	25.1	25.1
			Total	3	13.8	3.4	25.1
	Forgery	715A.2(2)a	N	110	10.0	1.7	65.2
			Y	22	15.6	2.0	36.0
			Total	132	10.9	1.7	65.2
		715A.2(A)	N	58	15.1	2.6	49.0
			Y	49	33.6	1.8	125.8
			Total	107	23.6	1.8	125.8
	Fraudulent Practice-2nd Degree	714.10	N/Total	7	10.8	4.2	23.3
	Furn. Contr. Substance to Inmates	719.8	N/Total	3	12.5	8.9	19.2
	Furn. Intoxicants to Inmates	719.7	N/Total	1	10.3	10.3	10.3
	Gather Use Drugs Other than Marijuana	124.407,A	N	9	15.3	7.6	35.8
			Y	1	23.9	23.9	23.9
			Total	10	16.2	7.6	35.8
	Going Armed with Intent	708.8	N	7	14.0	10.9	16.2
			Y	4	26.8	18.4	33.6
			Total	11	18.6	10.9	33.6
	Identity Theft	715A.8,A	N	1	6.0	6.0	6.0
			Y	3	25.0	3.1	37.8
			Total	4	20.2	3.1	37.8
	Incest	726.2	Y/Total	1	45.2	45.2	45.2
	Interf. w/Off Acts, Danger Weapon	719.1(1),D	N/Total	1	9.3	9.3	9.3
	Intimidation w/Danger Weapons	708.6(2)	N	4	12.7	7.5	19.6
Y			1	28.0	28.0	28.0	
Total			5	15.8	7.5	28.0	
Invol. Manslaughter/Public Offence	707.5(1)	N/Total	1	19.3	19.3	19.3	
Lascivious Acts w/Child	709.8	N/Total	1	23.2	23.2	23.2	
Lascivious Acts w/Child - 2 yr PA/WR	709.8	Y/Total	1	37.3	37.3	37.3	
Oper. While Under Infl-3rd Offense	321J.2(C)	N	500	10.0	1.3	88.5	
		Y	45	23.9	2.4	101.4	
		Total	545	11.1	1.3	101.4	
Oper. While Under Infl.-3rd Offense	321.281,C	N/Total	1	18.8	18.8	18.8	
Poss. of a Contr. Subst.- 3rd or Sub	124.401(5)D	N/Total	10	17.5	6.0	50.0	

Class	Offense Description	Code	Consec	N	Mean	Min	Max
Dfel	Poss. of a Contr. Sub- 2nd Off	124.401(5),C	N	1	24.8	24.8	24.8
			Y	4	35.5	26.8	47.8
			Total	5	33.4	24.8	47.8
	Poss. of Contraband-Corr. Facility	719.7(B)	N/Total	1	4.7	4.7	4.7
	Poss. of Stolen Property	714.1(4),B	N/Total	1	22.2	22.2	22.2
	Proh. Acts-Mfg, Del, Consp. or Poss. Marijuana LT 50 kg	124.401(1)(d)(2)	N	76	13.2	2.1	88.4
			Y	14	19.3	3.4	97.9
			Total	90	14.2	2.1	97.9
	Proh. Acts-Poss. Prod Int. for Mfg. Contr. Subst.-Anhydrous Ammonia	124.401(4)(d)	N	7	11.0	5.1	21.2
			Y	4	17.5	9.0	24.3
			Total	11	13.4	5.1	24.3
	Proh. Acts-Poss. Prod. Int. for Mfg. Contr. Subst.-Ephedrine	124.401(4)(a)	N	5	8.7	6.7	12.0
			Y	2	16.6	13.2	20.0
			Total	7	11.0	6.7	20.0
	Proh. Acts-Poss. Prod. Int. for Mfg. Contr. Subst.-Ethyl Ether	124.401(4)(c)	N	1	41.8	41.8	41.8
			Y	1	9.7	9.7	9.7
			Total	2	25.8	9.7	41.8
	Proh. Acts-Poss. Prod. Int. for Mfg. Contr. Subst. -Pseudoephedrine	124.401(4)(b)	N	18	10.6	2.6	19.7
			Y	3	20.7	12.4	28.4
			Total	21	12.0	2.6	28.4
Proh. Acts-Poss. Prod. Int. for Mfg. Contr. Subst.-Red Phosphorous	124.401(4)(e)	N/Total	1	13.9	13.9	13.9	
Proh. Acts-Poss. Prod. Int. for Mfg. Contr. Subst.-Lithium	124.401(4)(f)	N/Total	3	11.0	7.0	13.3	
Proh. Acts-Poss. Prod. Int. for Mfg. Any Contr. Subst.	124.401(4)	N	24	15.0	2.3	78.2	
		Y	7	32.2	12.3	45.8	
		Total	31	18.9	2.3	78.2	
Proh. Acts-Poss. w/o Prescription-3rd and Sub.	124.401(5)(c)	N	77	15.7	2.3	96.3	
		Y	12	21.5	3.0	46.3	
		Total	89	16.5	2.3	96.3	
Proh. Acts-Marijuana (50 Kilo)	124.401(1D)B	N	1	33.8	33.8	33.8	
		Y	2	49.1	34.3	63.9	
		Total	3	44.0	33.8	63.9	
Rec., Transp., Poss., Firearm Felon	724.26	N	27	13.2	7.0	22.7	
		Y	7	54.0	17.3	141.9	
		Total	34	21.6	7.0	141.9	
Serious Injury by Vehicle	707.6A(4)	N	6	17.3	8.4	22.6	
		Y	1	39.7	39.7	39.7	
		Total	7	20.5	8.4	39.7	
Sex Offender Registry	692A.7(1,B)	N	2	16.2	13.7	18.6	
		Y	1	36.2	36.2	36.2	
		Total	3	22.8	13.7	36.2	
Sex Offender Registry - Fail to Comply	692A.7(1C)	N/Total	4	16.1	8.3	20.2	
Solicitation to Commit Felony	705.1,A	N/Total	2	9.8	9.1	10.5	
Stalking - Dfel 2nd Off and Others	708.11(3B)	N/Total	3	18.8	16.2	20.2	
Terrorism	708.6	Y/Total	1	70.3	70.3	70.3	

Class	Offense Description	Code	Consec	N	Mean	Min	Max
Dfel	Theft-2nd Degree	714.2(2)	N	116	13.3	1.9	132.7
			Y	30	21.7	1.6	50.6
			Total	146	15.0	1.6	132.7
	Threats	712.8	N	2	11.6	7.9	15.3
			Y	4	24.0	19.8	30.5
			Total	6	19.9	7.9	30.5
	Trafficking in Stolen Weapons	724.16A,1	N	1	13.4	13.4	13.4
			Y	1	50.2	50.2	50.2
			Total	2	31.8	13.4	50.2
	Unauth. Use Credit Card>\$1K<\$10K	715A.6(2)(B)	N/Total	2	10.0	7.1	12.9
Unauth. Use Credit Card	715A.6(A)	N	2	14.6	4.8	24.5	
		Y	3	33.3	25.7	41.9	
		Total	5	25.8	4.8	41.9	
Unauth. Poss. of Offensive Weapons	724.3	N	2	12.9	9.2	16.5	
		Y	1	22.4	22.4	22.4	
		Total	3	16.1	9.2	22.4	
Violation of Custodial Order	710.6,A	Y/Total	1	4.1	4.1	4.1	
Willful Injury-Causing Bodily Injury	708.4(2)	N	21	21.0	7.4	90.4	
		Y	8	38.6	6.2	86.4	
		Total	29	25.9	6.2	90.4	
<b>Total</b>	<b>D Felonies</b>		<b>N</b>	<b>1387</b>	<b>12.8</b>	<b>1.3</b>	<b>132.7</b>
			<b>Y</b>	<b>330</b>	<b>27.4</b>	<b>1.6</b>	<b>141.9</b>
			<b>Total</b>	<b>1717</b>	<b>15.6</b>	<b>1.3</b>	<b>141.9</b>
Class	Offense Description	Code	Consec	N	Mean	Min	Max
AGMD	Accessory After the Fact, Felony	703.3,A	N	3	5.6	3.4	9.2
			Y	1	8.8	8.8	8.8
			Total	4	6.4	3.4	9.2
	Alcohol Ch. 123, Viol/Habitual	123.91(3B)	N/Total	1	6.6	6.6	6.6
	Alcohol Ch. 123, 3rd and Sub.	123.91(2)	N	9	6.8	1.9	20.7
			Y	1	7.6	7.6	7.6
			Total	10	6.9	1.9	20.7
	Animal Abuse	717B.2	N/Total	1	7.2	7.2	7.2
	Assault Injury-Peace Off/Others	708.3A(3)	Y/Total	1	16.5	16.5	16.5
	Assault Intent of Injury	708.2(1)	N	3	8.8	4.4	14.5
			Y	4	14.3	8.1	31.6
			Total	7	11.9	4.4	31.6
	Assault with a Weapon	708.2(3)	N/Total	3	5.5	4.7	6.1
Attempt to Entice Away Child	710.10(3)	Y/Total	1	16.1	16.1	16.1	
Attempt Burglary-3rd Degree	713.6B	N	6	6.2	2.2	20.1	
		Y	2	17.4	4.6	30.2	
		Total	8	9.0	2.2	30.2	
Burglary-3rd Degree	713.6A(2)	N	16	5.1	2.4	11.6	
		Y	2	14.1	3.9	24.2	
		Total	18	6.1	2.4	24.2	
Carrying Weapons	724.4	N	4	7.2	4.1	15.1	
		Total	7	11.5	4.1	22.5	

Class	Offense Description	Code	Consec	N	Mean	Min	Max
AGMD	Child Endanger/No Injury	726.6(3)	N	2	9.6	8.8	10.3
			Y	2	10.4	3.9	16.9
			Total	4	10.0	3.9	16.9
		726.6(6)	N/Total	2	4.7	4.6	4.8
	Consumption/Intox. 3rd or Sub	123.46-B	N/Total	1	4.3	4.3	4.3
	Criminal Mischief-3rd Degree	716.5	N	4	4.8	3.6	5.9
Y			2	14.2	13.2	15.2	
Total			6	7.9	3.6	15.2	
	Domestic Abuse (Sub Offenses)	708.2A(3B) 1991	N/Total	2	3.3	2.7	3.9
	Domestic Abuse Assault-2nd Off	708.2A(3B) 1996	N	5	7.0	6.0	8.3
Y			3	10.7	7.9	15.8	
Total			8	8.4	6.0	15.8	
	Domestic Abuse Assault with Intent	708.2A(2C)	N	3	7.1	5.2	8.6
Y			2	12.4	8.5	16.3	
Total			5	9.2	5.2	16.3	
	Driving While Barred-Motor Vehicle	321.561	N	43	6.1	2.5	26.1
Y			13	10.1	4.9	19.0	
Total			56	7.0	2.5	26.1	
	Eluding	321.279(2)	N	2	8.4	8.0	8.8
Y			1	5.8	5.8	5.8	
Total			3	7.6	5.8	8.8	
	Forgery	715A.2(B)	N	1	4.4	4.4	4.4
Y			2	16.1	6.9	25.3	
Total			3	12.2	4.4	25.3	
	Fraudulent Practices-3rd Degree	714.11	N/Total	1	18.4	18.4	18.4
	Identity Theft	715A.8,B	N	2	3.1	2.1	4.1
Y			1	8.1	8.1	8.1	
Total			3	4.8	2.1	8.1	
	Interference w/Official Acts	719.1(1)	N	3	5.5	4.0	6.5
Y			2	14.5	11.7	17.3	
Total			5	9.1	4.0	17.3	
	Oper. Vehicle while Intox. (OWI) AGMD-2nd Off	321J.2(B)	N	64	4.6	2.3	9.5
Y			8	6.4	2.8	11.0	
Total			72	4.8	2.3	11.0	
	Oper. While Under Infl.-2nd Off	321.281,B	Y/Total	1	7.2	7.2	7.2
	Operate Vehicle No Consent	714.7	N	12	8.3	2.3	52.9
Y			5	29.2	8.2	104.7	
Total			17	14.4	2.3	104.7	
	Poss. of a Contr. Subst.- 2nd Off	124.401(5)b	N	1	5.3	5.3	5.3
Y			1	7.7	7.7	7.7	
Total			2	6.5	5.3	7.7	
	Poss. of Burglary Tools	713.7	N	1	4.2	4.2	4.2
Y			1	257.6	257.6	257.6	
Total			2	130.9	4.2	257.6	
	Proh. Acts-Poss. w/o Prescription- 2nd Off	124.401(5),B	N	24	5.3	1.8	11.1
Y			6	6.6	1.9	12.6	
Total			30	5.6	1.8	12.6	

Class	Offense Description	Code	Consec	N	Mean	Min	Max
AGMD	Proh. Acts-Poss. w/o Prescription Marijuana-3rd and sub.	124.401(5),F	N	4	7.7	4.0	9.6
			Y	2	12.7	9.4	16.0
			Total	6	9.4	4.0	16.0
	Prostitution	725.1	N	13	3.9	1.8	8.8
			Y	3	6.2	3.2	9.0
			Total	16	4.3	1.8	9.0
	Sex Offender Reg.- Fail to Comply	692A.7(1A)	N/Total	3	4.4	2.8	6.6
	Sex Offender Reg.- 1st Off	692A.7(1,A)	N	6	4.5	2.7	7.1
			Y	1	8.5	8.5	8.5
			Total	7	5.1	2.7	8.5
	Tampering w/Witness or Juror	720.4	N	1	4.3	4.3	4.3
			Y	1	8.2	8.2	8.2
			Total	2	6.3	4.3	8.2
Tampering with Records	715A.5	N/Total	1	8.1	8.1	8.1	
Theft 3rd Degree	714.2(3)	N	32	4.0	0.8	12.9	
		Y	8	12.3	3.7	22.4	
		Total	40	5.7	0.8	22.4	
Unauth. Use of Credit Card \$1K	715A.6(2)(C)	Y/Total	1	19.5	19.5	19.5	
Unauth. Use of Credit Card	715A.6(B)	N/Total	3	5.0	3.7	5.8	
Unauth. Use of Credit Card	715A.6(2)	N	1	3.2	3.2	3.2	
		Y	1	6.7	6.7	6.7	
		Total	2	5.0	3.2	6.7	
<b>Total</b>	<b>Aggravated Misdemeanors</b>	<b>Total</b>	<b>N</b>	<b>283</b>	<b>5.4</b>	<b>0.8</b>	<b>52.9</b>
			<b>Y</b>	<b>82</b>	<b>15.0</b>	<b>1.9</b>	<b>257.6</b>
			<b>Total</b>	<b>365</b>	<b>7.6</b>	<b>0.8</b>	<b>257.6</b>
SRMD	Alcohol Ch 123 2nd Convict	123.91(1)	N	1	6.3	6.3	6.3
			Y	1	4.4	4.4	4.4
			Total	2	5.4	4.4	6.3
	Eluding	321.279(1)	Y/Total	1	3.6	3.6	3.6
	Proh. Acts-Poss. w/o Prescription- 1st Off	124.401(5)(a)	N	1	12.7	12.7	12.7
			Y	1	2.2	2.2	2.2
Total			2	7.5	2.2	12.7	
<b>Total</b>	<b>Serious Misdemeanors</b>		<b>N</b>	<b>2</b>	<b>9.5</b>	<b>6.3</b>	<b>12.7</b>
			<b>Y</b>	<b>3</b>	<b>3.6</b>	<b>2.2</b>	<b>4.4</b>
			<b>Total</b>	<b>5</b>	<b>4.4</b>	<b>2.2</b>	<b>12.7</b>

Note: Number of months shown in the table represents the length of time from an inmate's commitment to prison until approval of parole. Actual release usually occurs within the following month unless the parole grant is rescinded. Time does not include any credited jail time prior to commitment but will include time spent on appeal bond, work release, or other forms of release prior to the parole decision.

Y=Yes. N=No. "Y/tot" means that all paroles for that offense involved consecutive sentences, and including separate lines for the offense total and consecutive offense total would be redundant. "N/tot" means that all sentences in that category did not involve consecutive sentences, and including separate lines for the offense total and non-consecutive total would be redundant.

For parolees with multiple offenses at the time of parole, the primary offense reflects the crime with the longest sentence or the crime against a person, if the sentence lengths are equal. Also, the months served for a concurrent sentence may exceed the statutory maximum sentence in cases where a court has imposed a new sentence following an inmate's commitment to the Department of Corrections.



**Table 8. Months served until Release Decision, by Offense Class, FY07**

Class	N	Months Served		
		Mean	Min	Max
<b>A Felony</b>	<b>0</b>	<b>0.0</b>	<b>0.0</b>	<b>0.0</b>
B Felony not persons	180	51.4	10.8	173.0
B Felony persons	50	154.8	49.2	344.6
B Felony sex	3	122.4	76.4	174.6
<b>Total B Felony</b>	<b>233</b>	<b>74.5</b>	<b>10.8</b>	<b>344.6</b>
Other Felony not persons	122	58.2	10.4	326.6
Other Felony vs. persons	2	234.5	82.1	386.9
Other Felony sex	23	32.2	17.4	60.7
<b>Total Other Felony</b>	<b>147</b>	<b>56.6</b>	<b>10.4</b>	<b>386.9</b>
C Felony 70%	49	89.0	78.1	115.7
C Felony not persons	790	32.9	2.0	233.6
C Felony vs. persons	76	50.4	12.1	129.1
C Felony sex	12	63.3	23.3	107.1
<b>Total C Felony</b>	<b>927</b>	<b>37.7</b>	<b>2.0</b>	<b>233.6</b>
D Felony not persons	1062	17.0	1.6	141.9
D Felony vs. persons	106	23.8	4.1	106.0
D Felony sex	3	35.2	23.2	45.2
<b>Total D Felony</b>	<b>1,171</b>	<b>17.6</b>	<b>1.6</b>	<b>141.9</b>
<b>Total Felony</b>	<b>2,478</b>	<b>32.8</b>	<b>1.6</b>	<b>386.9</b>
<b>OWI</b>	623	10.5	1.3	101.4
<b>Special Sentence</b>	10	5.6	0.0	12.3
Agg. Misdemeanors not person	252	8.1	0.8	257.6
Agg. Misdemeanors vs. person	40	9.0	2.7	31.6
<b>Total Aggravated Misdemeanors</b>	<b>292</b>	<b>8.2</b>	<b>0.8</b>	<b>257.6</b>
<b>Serious Misdemeanors</b>	5	5.9	2.2	12.7
<b>Total misdemeanors</b>	<b>297</b>	<b>8.2</b>	<b>0.8</b>	<b>257.6</b>
<b>Total all grants</b>	<b>3,408</b>	<b>26.5</b>	<b>0.0</b>	<b>386.9</b>
<b>Total vs. person</b>	<b>374</b>	<b>57.0</b>	<b>0.0</b>	<b>386.9</b>
<b>Total not vs. person</b>	<b>3,034</b>	<b>22.7</b>	<b>0.8</b>	<b>326.6</b>

## VII. PAROLE REVOCATION

The parole revocation process begins with the receipt of a parole officer's violation report form. The alleged violator is subsequently notified to appear before an Administrative Parole Judge for a parole revocation hearing, during which the Parole Judge determines whether or not the parolee is in violation of terms of the parole agreement. If the Judge finds that a parole violation has occurred, one of the following sanctions may be imposed:

- re-instatement to parole with credit for jail time served;
- re-instatement to parole with additional conditions imposed (including transfer to Intensive Parole Supervision);
- diversion to an appropriate treatment program;
- placement in the Violator's Program;
- placement in the Phoenix Program;
- revocation of parole and transfer to a work release program;
- revocation of parole and return to prison.

The Parole Judges held 1,464 hearings this year, down from 1,570 in FY06. Even with the drop in number of hearing from last Fiscal year this continues to represent one of the highest numbers of annual hearings since at least FY85. The higher number of hearings appears to be due to increasing numbers of offenders on parole.

Pursuant to *Iowa Code* Section 908.10 and 908.10A, the Board's Parole Judges do not hear cases involving parolees' convictions and sentences for new felony and aggravated misdemeanor offenses. In the event a parolee is convicted and sentenced for a felony or aggravated misdemeanor offense while on parole, the parole is deemed revoked as of the date of the commission of the new offense. While no parole revocation hearing is conducted for an automatic revocation, an Administrative Parole Judge is required to process the judgment and sentence on the new conviction and notify the parolee of the revocation. During this fiscal year, there were 90 automatic revocations for new felony convictions (down from 199 in FY06) and 33 revocations for new aggravated misdemeanor convictions (down from 63 in FY06). Table 9 shows the distribution of these new convictions. Note that 18 of the 123 convictions involved crimes against persons; 8 of these were in-state felonies with only 1 a sex crime.

**Table 9. Type and Class of Convictions Leading to Automatic Revocations, FY2007**

Off.Type	Conviction Class								FY07	FY06	%
	Afel	Bfel	Ofel	Cfel	Dfel	AGMD	SerMis	Out-of-State	Total	Total	Change
Drugs		4	6	11	13	7		1	42	92	-54.3%
Immigration									0	1	-
Public Order					1	2			3	7	100.0%
OWI					5	2			7	31	-57.1%
Property			4	2	28	12		1	47	79	-77.4%
Vs. Person			1	1	5	8		2	17	25	-40.5%
Sex				1					1	3	-32.0%
Traffic						2			2	20	-66.7%
Weapon					4				4	4	-90.0%
<b>FY07 Total</b>	0	4	11	15	56	33	0	4	123	262	0.0%
<b>FY06 Total</b>	1	10	8	37	129	63	0	14	262		
<b>% Change</b>	100.0%	60.0%	37.5%	59.5%	56.6%	-47.6%	100.0%	-71.4%	53.1%		

Other felonies include habitual criminal convictions and drug offenses with enhanced penalties not fitting into the normal offense classification

Table 10 provides an historical picture of revocations. New felony and aggravated misdemeanor convictions dropped by nearly half from FY06 to FY07.

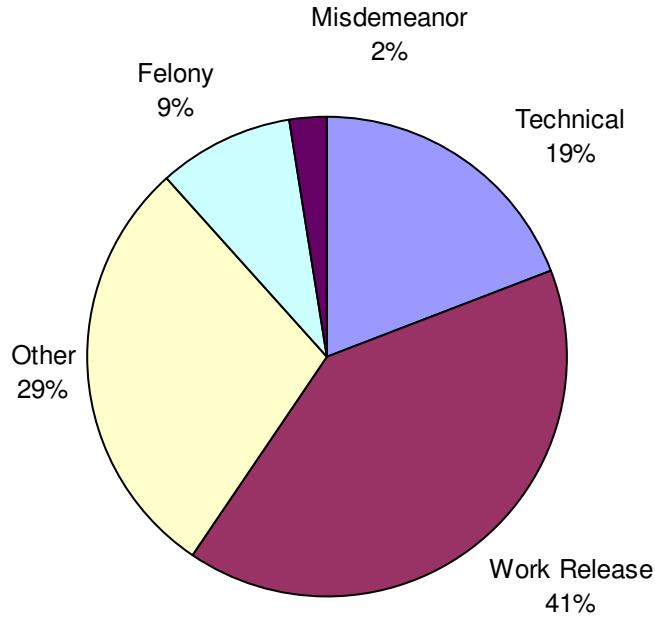
**Table 10. Parole Revocations, FY97-FY07**

Fiscal Year	Revocation Hearings	Paroles Revoked		Violators Program		All Felony/Agg. Misd. Convictions
		N	%	N	%	
1997	551	326	43.7%	158	28.7%	85
1998	515	394	55.5%	109	21.2%	108
1999	543	373	53.2%	120	22.1%	84
2000	618	484	56.5%	132	21.4%	135
2001	610	548	58.4%	49	8.0%	191
2002	679	521	55.2%	82	12.1%	146
2003	917	835	65.1%	74	8.1%	238
2004	953	950	68.7%	78	8.2%	295
2005	1,260	971	56.3%	87	6.9%	261
2006	1,570	1,160	57.2%	59	3.8%	262
2007	1,464	1,058	88.3%	75	5.1%	123

\*The method of calculating the percentage of hearings resulting in revocation omits auto-revokes, as they do not involve a hearing by the Administrative Law Judge. Thus the 1,464 hearings during FY07 resulted in 935 revocations; therefore, 63.9 percent of the hearings resulted in revocation.

The pie chart below reflects hearing dispositions within the revocation division for FY07. The table immediately following shows a comparison of Administrative Parole Judge activity in FY06 and FY07.

## Revocation Dispositions, FY2007



<b>Disposition</b>	<b>FY2007</b>	<b>FY2006</b>	<b>% Change</b>
Auto Rev-ret w/new aggravated misdemeanor	33	61	-45.9%
Auto. Rev.-ret. w/new felony conviction	90	201	-55.2%
Cont. Disposition -Violator Program ordered	65	53	22.6%
Continued Disposition - Phoenix Project	8	39	-79.5%
Continued Disposition	169	160	5.6%
Continued Hearing	8	82	-90.2%
Continue on Parole Granted	73	235	-68.9%
Discharge by ALJ	2	4	-50.0%
Insufficient Evidence	0	1	--
Rein. With New Conditions	38	29	31.0%
Reinstated w/o New Conditions	73	46	58.7%
Request for detainer granted	4	15	--
Rev.-WR after comp. violator program	0	1	--
Rev. to WR/Ret. to Inst after add info received	0	3	--
Revoked-technicals only	202	253	-20.2%
Revoked	304	222	36.9%
Revoked/placed on WR	425	412	3.2%
Violator Program/Parole	10	5	100.0%
Voluntary termination - parole	4	6	-33.3%
<b>Total</b>	<b>1,508</b>	<b>1,828</b>	<b>-17.5%</b>

Table 12 presents information on parole releases and revocations during FY07. The rates in the table are somewhat misleading, as true revocation rates should be based upon **all those on parole** rather than those paroled during a specific period. The make-up of the parole population will be somewhat “harder core” than those released during any period of time because the most serious offenders spend longer periods of time on parole and are therefore “at risk” for longer periods.

As has typically been true, revocation rates for those paroled for non-violent offenses in FY07 were higher than those paroled for crimes against persons. With the exception of Class B parolees, the total percentage revoked within each felony class tend to be higher for those committed for non-persons offenses, although (as would be expected) the rate of new violent offenses is somewhat higher for those released on crimes against persons. The higher revocation rates for non-persons offenders tends to support the notion that those committed to prison for non-violent offenses tend to committed to prison due to the weight of a lengthy or intense criminal history, while those committed for crimes against persons may be committed due to the commission of a single serious offense.

**Table 12. Paroles Granted and Revoked, FY2007**

Parole Offense Class	Paroles	Revoked no new conv		Revoked new conv not vs. persons		Revoked new conv-vs. persons		Total Revoked	
		N	Rate	N	Rate	N	Rate	N	Rate
Class A Felony	0	0	--	0	--	0	--	0	--
Class B 70%	0	0	--	0	--	0	--	0	--
Class B vs. persons	50	21	42.0%	6	12.0%	1	2.0%	28	56.0%
Class B sex	3	0	0.0%	0	0.0%	0	0.0%	0	0.0%
Enhanced Felony-pers.	2	1	50.0%	0	0.0%	0	0.0%	1	50.0%
Enhanced Felony sex	23	3	13.0%	0	0.0%	1	4.3%	4	17.4%
Class C 70%	49	7	14.3%	0	0.0%	0	0.0%	7	14.3%
Class C vs. persons	76	17	22.4%	2	2.6%	3	3.9%	22	28.9%
Class C sex	12	2	16.7%	0	0.0%	0	0.0%	2	16.7%
Class D vs. persons	106	23	21.7%	8	7.5%	4	3.8%	35	33.0%
Class D sex	3	0	0.0%	0	0.0%	0	0.0%	0	0.0%
Old Code Felony	0	1	0.0%	0	0.0%	0	0.0%	1	0.0%
<b>All Felons</b>	<b>324</b>	<b>75</b>	<b>23.1%</b>	<b>16</b>	<b>4.9%</b>	<b>9</b>	<b>2.8%</b>	<b>100</b>	<b>30.9%</b>
<b>Special Sentence</b>	<b>10</b>	<b>0</b>	<b>0.0%</b>	<b>0</b>	<b>0.0%</b>	<b>0</b>	<b>0.0%</b>	<b>0</b>	<b>0.0%</b>
Agg. Misd. vs. persons	40	4	10.0%	1	2.5%	0	0.0%	5	12.5%
Agg. Misd. Sex	0	0	--	0	--	0	--	0	--
Ser. Misd. vs. persons	0	0	--	0	--	0	--	0	--
Ser. Misd. Sex	0	0	--	0	--	0	--	0	--
<b>All Misdemeanants</b>	<b>40</b>	<b>4</b>	<b>10.0%</b>	<b>1</b>	<b>2.5%</b>	<b>0</b>	<b>0.0%</b>	<b>5</b>	<b>12.5%</b>
<b>Vs. persons subtotal</b>	<b>364</b>	<b>79</b>	<b>21.7%</b>	<b>17</b>	<b>4.7%</b>	<b>9</b>	<b>2.5%</b>	<b>105</b>	<b>28.8%</b>
Class B 50 year	0	0	--	0	--	0	--	0	--
Class B not persons	180	51	28.3%	17	9.4%	2	1.1%	70	38.9%
Enhanced Felony	122	50	41.0%	14	11.5%	5	4.1%	69	56.6%
Class C not persons	790	243	70.0%	70	8.9%	17	2.2%	330	41.8%
Class D not persons	1062	232	21.8%	77	7.3%	9	0.8%	318	29.9%
OWI-3	550	101	18.4%	21	3.8%	3	0.5%	125	22.7%
Compact	0	0	--	0	--	0	--	0	--
<b>All Felons</b>	<b>2,704</b>	<b>677</b>	<b>25.0%</b>	<b>199</b>	<b>7.4%</b>	<b>36</b>	<b>1.3%</b>	<b>912</b>	<b>33.7%</b>
Agg. Misd. not persons	252	25	9.9%	11	4.4%	1	0.4%	37	14.7%
OWI-2	73	1	1.4%	2	2.7%	0	0.0%	3	4.1%
Ser. Misd. not persons	5	1	20.0%	0	0.0%	0	0.0%	1	20.0%
OWI-1	0	0	--	0	--	0	--	0	--
Simple Misdemeanant	0	0	--	0	--	0	--	0	--
<b>All Misdemeanants</b>	<b>330</b>	<b>27</b>	<b>8.2%</b>	<b>13</b>	<b>3.9%</b>	<b>1</b>	<b>0.3%</b>	<b>41</b>	<b>12.4%</b>
<b>Non-persons subtotal</b>	<b>3,034</b>	<b>704</b>	<b>23.2%</b>	<b>212</b>	<b>7.0%</b>	<b>37</b>	<b>1.2%</b>	<b>953</b>	<b>31.4%</b>
<b>Total</b>	<b>3,408</b>	<b>783</b>	<b>23.0%</b>	<b>229</b>	<b>6.7%</b>	<b>46</b>	<b>1.3%</b>	<b>1,058</b>	<b>31.0%</b>

## VIII. VICTIM SERVICES

The Parole Board recognizes the special place that victims occupy as unwilling participants in some of the most violent episodes of the criminal justice system. The Board believes that this special place entitles victims to certain rights and privileges and that victims have special insight into the crimes committed by individuals that the Board considers for parole and work release. The Board believes that this insight demands victims' active participation in the parole process, participation that should be as painless as possible.

To operationalize these beliefs about victims, the Parole Board first established an active program for victim participation in 1986. Pursuant to the program, the Board created the position of Victim Coordinator, whose primary responsibility is to assist victims who want to exercise the following rights established by the Victim and Witness Protection Act:

1. Registered victims of forcible felonies may be notified of upcoming parole interviews.
2. Registered victims of forcible felonies may submit their opinions concerning the release of the inmate either in writing or by appearing personally at parole interviews.
3. Registered victims of forcible felonies are entitled to be notified about decisions regarding the release of offenders.

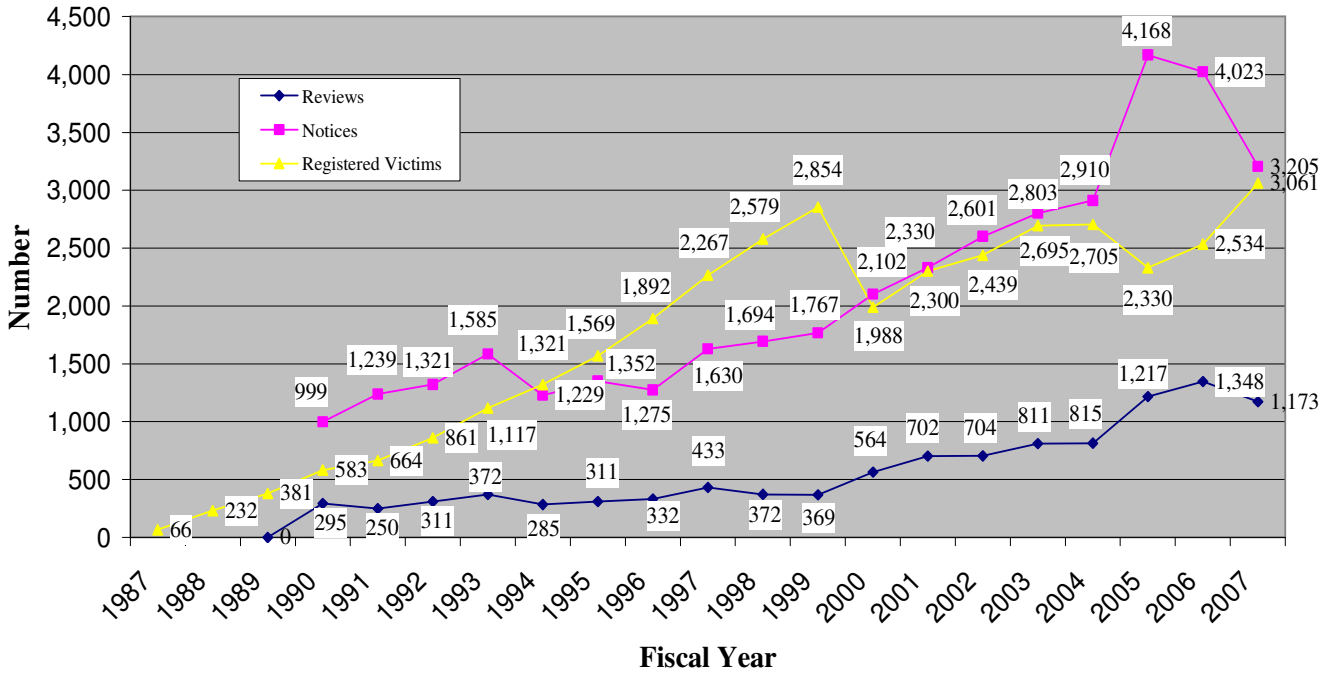
Soon after implementation of this program the Board recognized that requiring victims to testify in the presence of offenders could be extremely stressful for victims. Finding an innovative solution, the Board adopted the Iowa Communications Network as a vehicle to allow victims to testify at a site near their homes while avoiding direct contact with offenders.

The Parole Board received 816 registration requests from victims during FY07, up from 673 in FY06. Six hundred and nineteen of these victims met the statutory criteria as victims of violent crimes. At the end of the fiscal year, 3,061 victims were registered with the Board, a rise from FY06. The Board also mailed 3,205 victim notifications during the fiscal year. In reviewing the accompanying chart, note that there was a correction in the total number of current registered victims in FY00; prior to that time, victims were added to the registry each year but none were removed as perpetrators left the prison system (eliminating the victim's need to be on the registry). This oversight has been corrected here.

Note that, since FY96, the number of reviews conducted and number of notices sent annually have grown steadily and more than doubled, all with no increase in staff.

The chart on the following page shows victim services performed during FY07. It is followed by an itemization of the Board's expenditures for FY07.

## Victim Coordinator Activity





**Table 13. Financial Status Report Fiscal Year 2007**

<b>GENERAL</b>	
<b>FUNDS AVAILABLE</b>	
Balance forward	\$31,933.00
Appropriation	\$1,156,960.00
Salary Adjustment	\$20,889.00
Deappropriation	
Miscellaneous Receipts	
Reallocation	
Intra-state transfers	
<b>Total funds available</b>	<b>\$1,209,782.00</b>
<b>EXPENDITURES</b>	
Personal services	\$995,303.48
Personal travel	\$14,110.40
State vehicle operations	\$708.09
Depreciation	
Out-of-state travel	\$10,764.04
Office supplies	\$41,419.00
Equipment maintenance	
Postage	\$2,179.45
Communications	\$65,957.24
Professional services	\$17,096.95
Outside services	\$3,481.26
Intra-state transfers	
Reimbursement other agencies	\$5,507.70
ITS Reimbursement	\$5,707.16
Workers Compensation	
IT equipment	\$900.00
IT Outside Services	\$176.13
Other expenses	\$35.95
<b>Total expenditures</b>	<b>\$1,163,346.85</b>
<b>Ending balance</b>	<b>\$46,435.15</b>
<b>TECHNOLOGY PROJECT</b>	
<b>FUNDS AVAILABLE</b>	
Appropriation	\$75,000.00
Reversion	
<b>Total funds available</b>	<b>\$75,000.00</b>
<b>EXPENDITURES</b>	
IT Outside Services	\$71,840.00
IT Equipment	\$3,160.00
<b>Total expenditures</b>	<b>\$75,000.00</b>
<b>Ending balance</b>	<b>\$0.00</b>