

IOWA ACUTE DISEASE MONTHLY REPORT

July 2016

The Center for Acute Disease Epidemiology



Des Moines walking bridge



TABLE OF CONTENTS

Introduction	1
Iowa County Boundaries and Population	2
June Case Counts	3
YTD Case Counts – Counties A-G	4
YTD Case Counts – Counties H-P	5
YTD Case Counts – Counties R-W	6
12 Month Case Counts – Counties A-F	7
12 Month Case Counts – Counties G-O	8
12 Month Case Counts – Counties P-W	9
Campylobacteriosis Summary	10
Cryptosporidiosis Summary	11
E. coli (STEC) Summary	12
Pertussis Summary	13
Salmonellosis Summary	14
Shigellosis Summary	15
Center for Acute Disease Epidemiology (CADE) Contacts	16

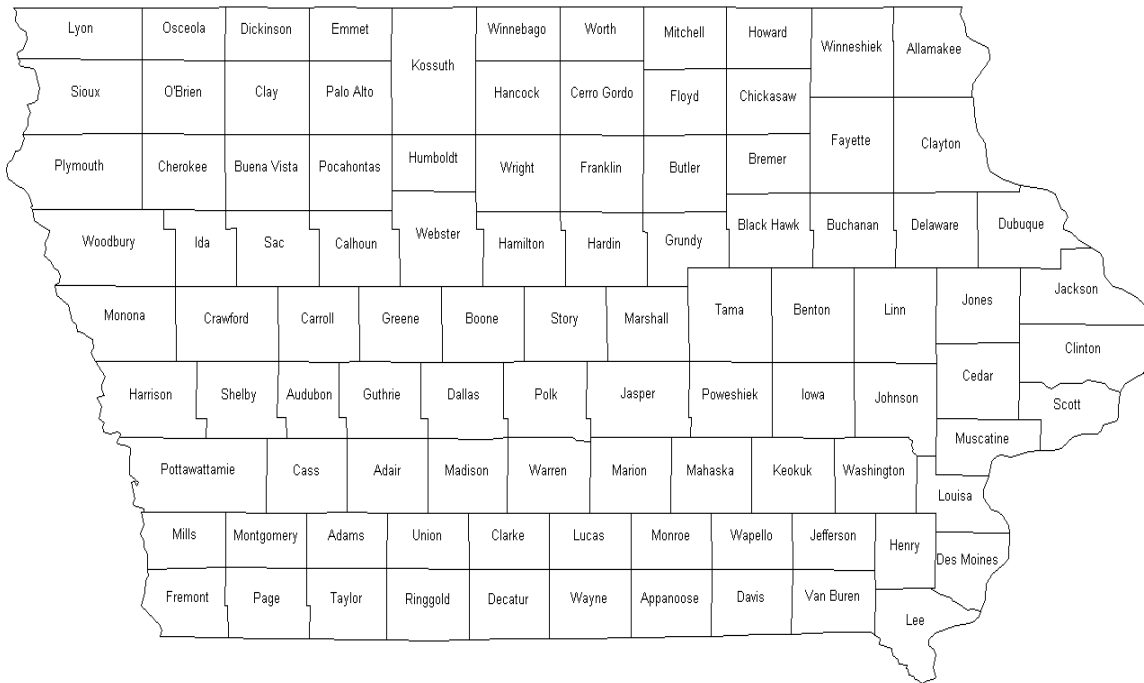
INTRODUCTION

The Center for Acute Disease Epidemiology (CADE) uses the most recent Council of State and Territorial Epidemiologists (CSTE) / Centers for Disease Control and Prevention (CDC) case definitions found on the [National Notifiable Disease Surveillance System \(NNDSS\)](#) page. These definitions are used to classify the case as confirmed, probable, suspect, not a case, or awaiting more information. **Only confirmed and probable cases meeting the CSTE/CDC case definitions are included in this report.**

Disease case counts were compiled from the Iowa Disease Surveillance System (IDSS). IDSS data updated frequently, therefore case counts may differ slightly for the same time period if updates are made after this report is generated.

Rates were calculated using the 2010 census population for the State of Iowa.

IOWA COUNTY BOUNDARIES



POPULATION	IOWA				3,046,355
	2010 CENSUS				
ADAIR	7,472	FLOYD	16,092	MONONA	9,121
ADAMS	3,894	FRANKLIN	10,548	MONROE	8,012
ALLAMAKEE	14,169	FREMONT	7,080	MONTGOMERY	10,424
APPANOOSE	12,692	GREENE	9,139	MUSCATINE	42,836
AUDUBON	5,873	GRUNDY	12,314	O'BRIEN	14,044
BENTON	25,699	GUTHRIE	10,687	OSCEOLA	6,211
BLACK HAWK	132,546	HAMILTON	15,312	PAGE	15,713
BOONE	26,364	HANCOCK	11,094	PALO ALTO	9,185
BREMER	24,624	HARDIN	17,441	PLYMOUTH	24,957
BUCHANAN	20,976	HARRISON	14,431	POCAHONTAS	7,154
BUENA VISTA	20,567	HENRY	20,222	POLK	451,677
BUTLER	15,021	HOWARD	9,526	POTTAWATTA	92,728
CALHOUN	9,926	HUMBOLDT	9,688	POWESHIEK	18,601
CARROLL	20,598	IDA	7,141	RINGGOLD	5,072
CASS	13,598	IOWA	16,330	SAC	10,071
CEDAR	18,393	JACKSON	19,587	SCOTT	170,385
CERRO GORDO	43,575	JASPER	36,641	SHELBY	11,961
CHEROKEE	11,945	JEFFERSON	16,810	SIOUX	34,547
CHICKASAW	12,321	JOHNSON	139,155	STORY	92,406
CLARKE	9,325	JONES	20,611	TAMA	17,576
CLAY	16,491	KEOKUK	10,329	TAYLOR	6,161
CLAYTON	17,773	KOSSUTH	15,321	UNION	12,583
CLINTON	48,420	LEE	35,682	VAN BUREN	7,436
CRAWFORD	17,434	LINN	216,111	WAPELLO	35,391
DALLAS	74,641	LOUISA	11,282	WARREN	47,336
DAVIS	8,791	LUCAS	8,746	WASHINGTON	22,015
DECATUR	8,136	LYON	11,712	WAYNE	6,402
DELAWARE	17,534	MADISON	15,448	WEBSTER	37,044
DES MOINES	40,480	MAHASKA	22,417	WINNEBAGO	10,554
DICKINSON	16,955	MARION	33,252	WINNESHIEK	20,994
DUBUQUE	95,697	MARSHALL	40,994	WOODBURY	102,130
EMMET	9,996	MILLS	14,896	WORTH	7,541
FAYETTE	20,502	MITCHELL	10,709	WRIGHT	12,972

Case Counts by County for the Month of June 2016

Confirmed and Probable

Counties with no reports of acute diseases may not be included in this table

	Anaplasmosis	Campylobacter	Cryptosporidium	Cyclospora	Dengue	E. coli (STEC)	HUS	Giardia	Hepatitis B chronic	Legionnaires disease	Lyme	Malaria	Mumps	Pertussis	Rocky Mountain spotted fever	Salmonella	Shigella		Anaplasmosis	Campylobacter	Cryptosporidium	Cyclospora	Dengue	E. coli (STEC)	HUS	Giardia	Hepatitis B chronic	Legionnaires disease	Lyme	Malaria	Mumps	Pertussis	Rocky Mountain spotted fever	Salmonella	Shigella	
ALLAMAKEE	-	1	-	-	-	-	-	-	-	-	-	-	-	-	-	-	-	JONES	-	-	1	-	-	-	-	-	-	-	-	-	-	-	-	-		
BENTON	-	3	-	-	-	-	-	-	-	1	-	-	-	-	-	-	-	KEOKUK	-	2	-	-	-	1	-	-	-	-	-	-	-	-	-	-		
BLACK HAWK	-	2	-	-	-	-	-	-	-	-	-	-	8	-	-	3	-	KOSSUTH	-	1	-	-	-	-	-	-	-	-	-	-	-	-	-	-		
BOONE	-	-	-	-	-	-	-	-	-	-	-	-	-	-	-	1	-	LEE	-	-	-	-	-	-	-	-	-	-	-	-	-	-	2	-		
BREMER	-	-	-	-	-	-	-	-	-	-	-	-	1	-	-	-	-	LINN	-	14	2	-	-	1	-	-	2	-	3	-	4	-	1	4	-	
BUCHANAN	-	-	-	-	-	-	-	-	-	-	-	-	2	-	-	1	-	LUCAS	-	1	-	-	-	-	-	-	-	-	-	-	-	-	-	-	-	
BUTLER	-	1	-	-	-	1	-	-	-	-	-	-	-	-	-	-	-	LYON	-	3	-	-	-	-	-	-	-	-	-	-	-	-	-	-	1	
CALHOUN	-	7	-	-	-	-	-	-	-	-	-	-	-	-	-	-	-	MADISON	-	1	-	-	-	-	-	-	-	-	-	-	-	-	-	-	-	
CARROLL	-	2	-	-	-	2	-	-	-	-	-	-	-	-	-	1	-	MAHASKA	-	2	-	-	-	-	-	-	-	-	-	-	-	-	-	-	-	
CEDAR	-	1	-	-	-	-	-	-	-	-	-	-	-	-	-	-	-	MARION	-	2	-	-	-	-	-	-	-	-	-	-	-	-	-	2	-	
CERRO GORDO	-	-	-	-	-	-	-	-	1	-	-	-	-	-	-	-	-	MARSHALL	-	1	-	-	4	-	1	-	-	-	1	-	-	-	-	-	-	
CHICKASAW	-	-	-	-	-	-	-	-	-	-	-	1	-	-	-	2	-	MILLS	-	-	-	-	-	-	-	-	-	-	-	-	-	-	-	1	-	
CLARKE	-	2	-	-	-	-	-	-	-	-	-	-	-	-	-	-	-	MITCHELL	-	1	-	-	-	-	-	-	-	-	-	-	-	-	-	1	-	
CLAYTON	-	2	1	-	-	1	-	-	-	1	-	-	-	-	-	1	-	MONONA	-	3	-	-	-	-	-	-	-	-	-	-	-	-	-	-	-	
CLINTON	-	1	-	-	-	-	-	-	-	-	-	-	-	-	-	2	-	MONROE	-	1	1	-	-	-	1	-	-	-	-	-	-	-	-	-	-	
CRAWFORD	-	1	-	-	-	2	-	-	-	-	-	-	-	-	-	1	-	MUSCATINE	-	-	-	-	-	-	-	-	-	-	-	-	-	-	-	2	-	
DALLAS	-	4	-	-	-	-	-	-	1	-	-	-	-	-	-	1	1	O'BRIEN	-	3	-	-	2	-	-	-	-	-	-	-	-	-	-	-	-	
DECATUR	-	1	-	-	-	-	-	-	-	-	-	-	-	-	-	1	-	PAGE	-	2	-	-	-	-	-	-	-	-	-	-	-	-	-	-	-	
DELAWARE	-	3	1	-	-	1	-	-	-	-	-	-	4	-	-	1	-	PALO ALTO	-	3	-	-	-	-	-	-	-	-	-	1	-	-	-	-	-	
DES MOINES	-	1	-	-	-	-	-	-	-	-	1	-	-	-	-	-	-	PLYMOUTH	-	1	1	-	-	-	-	-	-	-	-	-	-	-	-	-	-	
DICKINSON	-	-	-	-	-	-	-	-	-	-	-	-	-	-	-	2	-	POCAHONTAS	-	1	-	-	-	-	-	-	-	-	-	-	-	-	-	-	-	-
DUBUQUE	-	9	4	-	-	8	-	-	-	2	-	-	-	-	-	1	20	POLK	-	14	-	1	-	2	1	1	7	-	1	1	-	3	-	7	2	
FAYETTE	1	-	1	-	-	-	-	-	-	-	-	-	-	-	-	2	-	POTTAWATTAMIE	-	4	-	-	-	1	-	-	1	-	-	-	-	-	-	-	1	1
FREMONT	-	1	-	-	-	-	-	-	-	-	-	-	-	-	-	-	1	SAC	-	1	-	-	-	-	-	-	-	-	-	-	-	-	-	-	-	-
GRUNDY	-	1	-	-	-	1	-	-	-	-	-	-	1	-	-	1	-	SCOTT	-	3	-	-	-	1	-	-	1	1	-	-	-	-	-	1	-	-
GUTHRIE	-	1	-	-	-	-	-	-	-	-	-	-	-	-	-	1	-	SHELBY	-	1	-	-	-	-	-	-	-	-	-	-	-	-	-	-	-	-
HAMILTON	-	1	-	-	-	-	-	-	-	-	-	-	-	-	-	1	-	SIoux	-	3	2	-	-	-	-	-	-	-	-	-	-	-	-	-	2	-
HANCOCK	-	1	-	-	-	-	-	-	-	-	-	-	-	-	-	-	-	STORY	-	-	-	-	-	2	-	-	1	-	-	-	3	-	-	-	1	-
HARDIN	-	-	-	-	1	-	-	-	-	-	-	-	-	-	-	1	-	TAMA	-	-	-	-	-	-	2	-	-	-	-	-	-	-	-	-	-	-
HARRISON	-	1	-	-	-	-	-	-	1	-	-	-	-	-	-	-	-	VAN BUREN	-	1	-	-	-	-	-	-	-	-	-	-	-	-	-	-	-	-
HOWARD	-	-	-	-	-	1	-	-	-	-	-	-	-	-	-	-	-	WAPELLO	-	1	-	-	-	-	-	-	-	-	-	-	-	-	-	-	-	-
HUMBOLDT	-	3	-	-	-	-	-	-	-	-	-	-	-	-	-	-	-	WARREN	-	1	-	-	-	1	-	1	-	-	-	-	1	-	-	1	1	-
IOWA	-	-	-	-	-	-	-	-	-	-	-	-	-	-	-	1	-	WASHINGTON	-	1	-	-	-	-	-	-	-	-	-	-	-	-	-	-	2	-
JACKSON	-	1	1	-	-	-	-	-	-	-	-	-	-	-	-	-	-	WEBSTER	-	2	-	-	-	-	-	-	-	-	-	-	-	-	-	-	-	-
JASPER	-	-	-	-	-	-	-	-	-	-	-	-	-	-	-	2	-	WINNESHEK	-	2	-	-	-	-	-	-	-	-	-	-	-	-	-	-	-	-
JEFFERSON	-	-	-	-	-	1	-	-	-	-	1	-	-	-	-	1	-	WOODBURY	-	2	1	-	-	1	-	-	1	-	-	-	-	-	-	-	-	-
JOHNSON	-	2	-	-	-	1	-	-	2	-	5	-	1	-	-	2	-	WORTH	-	1	-	-	-	-	-	-	-	-	-	-	-	-	-	-	-	-

YTD Case Counts by County A-G

January 1, 2016 – June 30, 2016

Confirmed and Probable Cases

	Anaplasmosis	Brucellosis	Campylobacter	Chikungunya	Cholera	Cryptosporidium	Cyclospora	Dengue	E. COLI SHGT	Ehrlichioses	Ehrlichioses/Anaplasmosis undetermined	HUS	Giardia	Hepatitis A	Hepatitis E	Hepatitis B acute	Hepatitis B chronic	Hepatitis D	Legionnaires disease	Pontiac fever	Lyme	Malaria	Mumps	N. meningitidis	Pertussis	Q Fever Acute	Q Fever Chronic	Rocky Mountain spotted fever	Salmonella	Shigella	Typhoid fever	VISA	
ADAIR	-	-	2	-	-	1	-	-	1	-	-	-	1	-	-	-	-	-	-	-	-	-	-	-	-	-	-	-	-	-	-		
ADAMS	-	-	-	-	-	-	-	-	-	-	-	-	-	-	-	-	-	-	-	-	-	-	-	-	-	-	-	2	-	-	-	-	
ALLAMAKEE	-	-	5	-	-	-	-	-	-	-	-	-	-	-	-	-	-	-	-	-	-	4	-	-	1	-	-	-	-	-	-	-	
APPANOOSE	-	-	1	-	-	-	-	-	-	-	-	-	-	-	-	-	-	-	-	-	-	-	-	-	-	-	-	-	-	-	-	-	
AUDUBON	-	-	2	-	-	-	-	-	-	-	-	-	-	-	-	-	-	-	-	-	-	-	-	-	-	-	-	-	-	-	-	-	
BENTON	-	-	7	-	-	3	-	-	2	-	-	-	-	-	-	-	1	-	1	-	1	-	1	-	-	-	-	-	-	-	-	-	
BLACK HAWK	-	-	10	-	-	-	-	-	-	-	-	-	2	-	-	-	7	-	-	-	-	1	17-	-	5	-	-	1	12	1	-	-	
BOONE	-	-	2	-	-	-	-	-	-	-	-	-	-	-	-	-	-	-	-	-	-	-	8	-	-	-	-	2	-	-	-	-	
BREMER	-	-	-	-	-	-	-	-	-	-	-	-	-	-	-	-	-	-	-	-	-	-	7	-	-	-	-	-	4	-	-	-	
BUCHANAN	-	-	1	-	-	-	-	-	-	-	-	-	-	-	-	-	-	-	-	-	-	1	5	-	1	-	-	3	-	-	-	-	
BUENA VISTA	-	-	4	-	-	1	-	-	-	-	-	-	-	-	-	-	1	-	-	-	-	-	-	-	-	-	-	1	-	-	-	-	
BUTLER	-	-	3	-	-	1	-	-	2	-	-	-	1	-	-	-	-	-	-	-	-	-	2	-	1	-	-	2	-	-	-	-	
CALHOUN	-	-	7	-	-	-	-	-	-	-	-	-	-	-	-	-	-	-	-	-	-	-	-	-	-	-	-	1	-	-	-	-	
CARROLL	-	-	6	-	-	2	-	-	2	-	-	-	-	-	-	-	-	-	-	-	-	-	2	-	-	-	-	5	-	-	-	-	
CASS	-	-	-	-	-	-	-	-	-	-	-	-	-	-	-	-	-	-	-	-	-	-	-	-	-	-	-	-	-	-	-	-	
CEDAR	-	-	3	-	-	-	-	-	-	-	-	-	-	-	-	-	-	-	-	-	-	2	-	2	-	-	-	1	2	-	-	-	
CERRO GORDO	-	-	3	-	-	-	-	-	-	-	-	-	3	-	-	-	-	-	-	-	-	-	5	-	-	-	-	4	-	-	-	-	
CHEROKEE	-	-	2	-	-	1	-	-	-	-	-	-	-	-	-	-	-	-	-	-	-	-	-	-	-	-	1	-	-	-	-	-	
CHICKASAW	-	-	2	-	-	1	-	-	-	-	-	-	2	-	-	-	-	-	-	-	-	1	2	-	-	-	-	16	1	-	-	-	
CLARKE	-	-	3	-	-	1	-	-	-	-	-	-	-	-	-	-	-	-	-	-	-	-	-	-	-	-	4	-	-	-	-	-	
CLAY	-	-	1	-	-	-	-	-	1	-	-	-	2	-	-	-	-	-	-	-	-	-	-	-	-	-	3	1	-	-	-	-	
CLAYTON	-	-	4	-	-	2	-	-	1	-	1	-	-	-	-	-	-	-	-	-	-	5	4	-	1	-	2	2	-	-	-	-	
CLINTON	-	-	4	-	-	1	-	-	-	-	-	-	-	-	-	-	-	-	-	-	-	2	1	-	-	-	5	3	-	-	-	-	
CRAWFORD	-	-	2	-	-	2	-	-	2	-	-	-	-	-	-	-	-	-	-	-	-	-	-	-	-	-	1	-	-	-	-	-	
DALLAS	-	-	16	1	-	2	1	1	3	-	-	-	3	-	-	-	1	-	1	1	-	-	-	-	-	-	5	4	-	-	-	-	
DAVIS	-	-	3	-	-	1	-	-	-	-	-	-	-	-	-	-	-	-	-	-	-	-	-	-	-	-	-	-	-	-	-	-	-
DECATUR	-	-	3	-	-	-	-	-	1	-	-	-	-	-	-	-	1	-	-	-	-	-	1	-	-	-	1	-	-	-	-	-	-
DELAWARE	-	-	5	-	-	3	-	-	1	-	-	-	1	-	-	-	-	-	-	-	-	2	14	-	-	-	2	-	-	-	-	-	-
DES MOINES	-	-	4	-	-	2	-	-	-	-	-	-	-	-	-	-	-	-	-	-	-	1	-	-	-	-	1	-	-	-	-	-	-
DICKINSON	-	-	1	-	-	2	-	-	-	-	-	-	-	-	-	-	1	-	-	-	-	-	1	-	-	-	2	2	-	-	-	-	-
DUBUQUE	-	-	33	-	-	19	-	-	14	-	-	-	12	-	-	-	2	-	-	-	-	6	2	-	-	-	13	198	-	-	-	-	-
EMMET	-	-	2	-	-	-	-	-	-	-	-	-	-	-	-	-	-	-	-	-	-	-	-	-	-	-	-	1	-	-	-	-	-
FAYETTE	1	-	4	-	-	2	-	-	-	-	-	-	-	-	-	-	-	-	-	-	2	-	3	-	-	-	2	-	-	-	-	-	-
FLOYD	-	-	3	-	-	-	-	-	1	-	-	-	-	-	-	-	-	-	-	-	-	-	1	-	-	-	11	-	-	-	-	-	-
FRANKLIN	-	-	3	-	-	-	-	-	2	-	-	-	-	-	-	-	-	-	-	-	-	-	1	-	-	-	-	-	-	-	-	-	-
FREMONT	-	-	1	-	-	-	-	-	-	-	-	-	-	-	-	-	-	-	-	-	-	-	-	-	-	-	1	1	-	-	-	-	-
GREENE	-	-	3	-	-	-	-	-	-	-	-	-	1	-	-	-	-	-	-	-	-	-	-	-	-	-	-	-	-	-	-	-	-
GRUNDY	-	-	1	-	-	-	-	-	2	-	-	-	-	-	-	-	-	-	-	-	-	-	6	-	-	-	4	-	-	-	-	-	-
GUTHRIE	-	-	2	-	-	1	-	-	1	-	-	-	-	-	-	-	-	-	-	-	-	-	-	-	-	-	1	-	-	-	-	-	-

YTD Case Counts by County H-P

January 1, 2016 – June 30, 2016

Confirmed and Probable Cases

	Anaplasmosis	Brucellosis	Campylobacter	Chikungunya	Cholera	Cryptosporidium	Cyclospora	Dengue	E.COLI SHGT	Ehrlichioses	Ehrlichioses/Anaplasmosis undetermined	HUS	Giardia	Hepatitis A	Hepatitis E	Hepatitis B acute	Hepatitis B chronic	Hepatitis D	Legionnaires disease	Pontiac fever	Lyme	Malaria	Mumps	N. meningitidis	Pertussis	Q Fever Acute	Q Fever Chronic	Rocky Mountain spotted fever	Salmonella	Shigella	Typhoid fever	VISA
HAMILTON	-	-	2	-	-	1	-	1	-	-	-	-	-	-	-	-	-	-	-	-	-	-	-	-	-	-	-	2	-	-	-	
HANCOCK	-	-	2	-	-	-	-	-	-	-	-	-	-	-	-	-	-	-	-	-	-	-	2	-	-	-	-	-	-	-	-	
HARDIN	-	-	2	-	-	1	-	1	-	-	-	-	-	-	-	1	-	-	-	-	-	-	9	-	-	-	-	-	1	-	-	
HARRISON	-	-	5	-	-	1	-	-	1	-	-	-	-	-	-	-	1	-	-	-	-	-	1	1	-	-	-	-	2	-	-	
HENRY	-	-	1	-	-	2	-	-	-	-	-	-	-	-	-	-	-	-	-	-	-	-	-	-	-	-	-	2	-	-		
HOWARD	-	-	3	-	-	-	-	-	1	-	-	-	-	-	-	-	-	-	-	-	-	-	-	-	-	-	-	2	-	-		
HUMBOLDT	-	-	4	-	-	1	-	-	1	-	-	-	-	-	-	-	-	-	-	-	-	-	-	-	-	-	-	-	1	-	-	
IDA	-	-	-	-	-	-	-	-	-	-	-	-	-	-	-	-	-	-	-	-	-	-	-	-	-	-	-	1	-	-	-	
IOWA	-	-	2	-	-	1	-	-	1	-	-	-	1	-	-	-	-	-	-	-	-	2	-	1	-	-	-	1	-	-	-	
JACKSON	-	-	6	-	-	1	-	-	-	-	-	-	-	-	-	1	-	-	-	-	-	-	-	-	-	-	-	-	5	-	-	
JASPER	-	-	2	-	-	1	-	-	-	-	-	-	1	-	-	-	-	-	-	-	-	-	-	-	-	-	-	4	-	-		
JEFFERSON	1	-	-	-	-	2	-	-	1	-	-	-	1	-	-	-	2	-	-	-	-	1	-	-	-	-	-	1	-	1	-	
JOHNSON	-	-	14	-	-	4	-	-	3	-	-	-	2	-	-	-	9	-	-	-	-	11	1	113	-	7	-	13	4	1	-	
JONES	-	-	4	-	-	5	-	-	-	-	-	-	-	-	-	-	-	-	1	-	1	-	-	-	-	-	-	-	2	-	-	
KEOKUK	-	-	4	-	-	2	-	-	1	-	-	-	-	-	-	-	-	-	-	-	-	-	-	-	-	-	-	1	-	-	-	
KOSSUTH	-	-	1	-	-	-	-	-	-	-	-	-	-	-	-	-	-	-	-	-	-	-	-	-	-	-	-	1	-	-	-	
LEE	-	-	1	-	-	-	-	-	-	1	-	-	1	-	-	-	-	-	-	-	-	-	-	-	1	-	-	4	-	-	-	
LINN	-	-	30	-	-	9	-	-	7	-	-	-	5	3	-	-	15	1	-	-	7	-	18	-	-	-	1	23	1	-	-	
LOUISA	-	-	3	-	-	-	-	-	-	-	-	-	-	-	-	-	-	-	-	-	-	-	-	-	-	-	-	-	-	-	-	
LUCAS	-	-	2	-	-	1	-	-	1	-	-	-	-	-	-	-	-	-	-	-	-	-	1	-	-	-	-	1	-	-	-	
LYON	-	-	8	-	-	6	-	-	-	-	-	-	1	-	-	-	-	-	-	-	-	-	-	-	-	-	-	3	1	-	-	
MADISON	-	-	2	-	-	5	-	-	-	-	-	-	-	-	-	-	-	-	-	-	-	-	4	-	-	1	-	1	-	-	-	
MAHASKA	-	-	2	-	-	2	-	-	2	-	-	-	-	-	-	1	-	-	-	-	-	-	-	-	-	1	-	2	-	-	-	
MARION	-	-	6	-	-	1	-	-	1	-	-	-	-	-	-	-	-	-	-	-	-	-	3	-	-	-	-	5	1	-	-	
MARSHALL	-	-	7	-	-	-	-	-	4	-	-	-	1	-	-	-	2	-	-	-	1	1	1	-	-	-	-	-	1	-	-	
MILLS	-	-	3	-	-	-	-	-	-	-	-	-	-	-	-	1	-	-	-	-	-	-	-	-	-	-	-	1	9	-	-	
MITCHELL	-	-	3	-	-	2	-	-	-	-	-	-	2	-	-	-	-	-	-	-	-	-	2	-	-	-	-	1	-	-	-	
MONONA	-	-	8	-	-	3	-	-	-	-	-	-	-	-	-	-	-	-	-	-	-	-	-	-	-	-	-	-	-	-	-	
MONROE	-	-	1	-	-	3	-	-	-	-	-	-	1	-	-	-	-	-	-	-	-	-	-	-	4	-	-	-	-	-	-	
MONTGOMERY	-	-	-	-	-	-	-	-	1	-	-	-	-	-	-	-	-	-	-	-	-	-	-	-	-	-	-	-	-	-	-	
MUSCATINE	-	-	-	-	-	2	-	-	1	-	-	-	-	-	-	-	-	-	-	-	-	2	-	10	-	1	-	9	2	-	-	
O'BRIEN	-	-	7	-	-	1	-	-	3	-	-	-	1	-	-	-	-	-	-	-	-	-	1	-	-	-	-	2	-	-	-	
OSCEOLA	-	-	-	-	-	-	-	-	-	-	-	-	1	-	-	-	-	-	-	-	-	-	1	-	-	-	-	-	-	-	-	
PAGE	-	-	3	-	-	2	-	-	3	-	-	-	1	-	-	-	-	-	-	-	-	-	-	-	-	-	-	1	-	-	-	
PALO ALTO	-	-	4	-	-	-	-	-	-	-	-	-	-	-	-	-	-	-	-	-	-	-	1	-	-	-	-	-	-	-	-	
PLYMOUTH	-	-	5	-	-	5	-	-	-	-	-	-	-	-	-	-	-	-	-	-	-	-	5	-	-	-	-	3	-	-	-	
POCAHONTAS	-	-	3	-	-	-	-	-	1	-	-	-	-	-	-	-	-	-	-	-	-	-	-	-	-	-	-	-	-	-	-	
POLK	-	-	47	-	-	2	1	-	7	-	-	1	15	-	2	1	30	-	-	-	4	2	15	-	18	-	-	2	22	-	-	
POTTAWATTAMIE	-	-	8	-	-	2	-	-	3	-	-	-	-	-	-	1	3	-	1	-	-	-	1	-	1	-	-	6	2	-	-	
POWESHIEK	-	-	3	-	-	-	-	-	-	-	-	-	1	-	-	-	-	-	-	-	1	-	-	-	-	-	-	2	-	-	-	

YTD Case Counts by County R-W

January 1, 2016 – June 30, 2016

Confirmed and Probable Cases

	Anaplasmosis	Brucellosis	Campylobacter	Chikungunya	Cholera	Cryptosporidium	Cyclospora	Dengue	E.COLI SHGT	Ehrlichioses	Ehrlichioses/Anaplasmosis undetermined	HUS	Giardia	Hepatitis A	Hepatitis E	Hepatitis B acute	Hepatitis B chronic	Hepatitis D	Legionnaires disease	Pontiac fever	Lyme	Malaria	Mumps	N. meningitidis	Pertussis	Q Fever Acute	Q Fever Chronic	Rocky Mountain spotted fever	Salmonella	Shigella	Typhoid fever	VISA
RINGGOLD	-	-	-	-	-	1	-	-	-	-	-	-	-	-	-	-	-	-	-	-	-	-	-	3	-	-	-	-	-	-	-	
SAC	-	-	4	-	-	-	-	-	1	-	-	-	-	-	-	-	-	-	-	-	-	-	-	-	-	-	-	1	-	-	-	
SCOTT	-	-	10	-	-	3	-	1	3	-	-	-	3	-	1	-	-	-	-	-	-	-	9	1	7	-	-	-	14	27	-	1
SHELBY	-	-	5	-	-	3	-	-	-	-	-	-	-	-	-	-	-	-	2	-	-	3	1	7	-	-	-	1	-	-	-	
SIoux	-	-	10	-	-	9	-	-	-	-	-	-	5	-	-	-	-	-	-	1	-	-	1	-	-	-	-	9	-	-	-	
STORY	-	1	2	-	-	8	-	-	2	-	-	-	-	1	-	-	7	-	1	-	1	-	57	-	1	-	-	7	1	-	-	
TAMA	-	-	3	-	-	-	-	-	3	-	-	-	2	-	-	-	-	-	-	-	-	-	2	-	3	-	-	1	1	-	-	
TAYLOR	-	-	-	-	-	-	-	-	-	-	-	-	-	-	-	-	-	-	-	-	-	-	-	-	-	-	-	1	-	-	-	
UNION	-	-	-	-	-	-	-	-	-	-	-	-	-	-	-	-	-	-	-	-	-	-	-	-	-	-	-	-	-	-	-	
VAN BUREN	-	-	3	-	-	1	-	-	-	-	-	-	-	-	-	-	-	-	-	-	-	-	-	-	-	-	-	-	-	-	-	
WAPELLO	-	-	13	-	-	5	-	-	-	-	-	-	-	-	-	-	2	-	-	-	-	-	-	-	-	-	-	1	-	-	-	
WARREN	-	-	7	-	1	-	-	-	2	-	-	-	2	-	-	-	-	-	-	-	-	-	15	-	-	-	1	11	4	-	-	
WASHINGTON	-	-	3	-	-	1	-	-	-	-	-	-	-	-	-	-	-	-	-	-	1	-	1	-	-	-	-	2	-	-	-	
WAYNE	-	-	-	-	-	-	-	-	-	-	-	-	-	-	-	-	-	-	-	-	1	-	-	-	-	-	-	1	-	-	-	
WEBSTER	-	-	6	-	-	1	-	-	-	-	-	-	3	1	-	-	-	-	-	-	1	-	-	-	-	-	-	-	-	-	-	
WINNEBAGO	-	-	3	-	-	-	-	-	-	-	-	-	-	-	-	-	-	-	-	-	-	-	-	-	-	-	-	-	-	-	-	
WINNESHIEK	-	-	6	-	-	-	-	-	1	-	-	-	-	-	-	-	-	-	-	-	1	-	7	-	-	-	-	-	2	-	-	-
WOODBURY	-	-	9	-	-	3	-	-	3	-	-	-	3	-	-	-	6	-	-	-	-	-	1	-	1	-	-	3	7	-	-	-
WORTH	-	-	2	-	-	1	-	-	-	-	-	-	-	-	-	-	-	-	-	-	-	-	1	-	-	-	-	1	-	-	-	-
WRIGHT	-	-	5	-	-	-	-	-	-	-	-	-	-	-	-	-	-	-	-	-	-	-	-	-	-	-	-	-	-	-	-	-

12 Month Case Counts by County A-F

July 1, 2015 – June 30, 2016

Confirmed and Probable Cases

	Anaplasmosis phagocytophilum	Bot-Infant	Brucellosis not temporally/spatially clustered	Campy	Chikungunya Non-neuroinvasive	Cholera	Crypto	Cyclo	Dengue	Dengue-Like Illness	E.COLI SHGT	Ehrlichioses chaffeensis	Ehrlichioses/Anaplasmosis undetermined	Enteric-HUS	Giardia	Hep A	Hep E	Hepatitis B acute	Hepatitis B chronic	Hepatitis D co-infection - acute	HIB	Legionellosis Legionnaires disease	Legionellosis Pontiac fever	Listeria	Lyme	Malaria	Mumps	N. Meng.	Pertussis	Q Fever Acute	Q Fever Chronic	RMSF	Salm	Shig	Typh Fvr	VISA	WNV	
ADAIR	-	-	-	3	-	-	1	-	-	-	1	-	-	-	1	-	-	-	-	-	-	-	-	-	-	-	-	-	-	-	-	2	-	-	-	-	-	
ADAMS	-	-	-	-	-	-	-	-	-	-	-	-	-	-	-	-	-	-	1	-	-	-	-	-	-	-	-	-	-	-	-	-	2	-	-	-	-	1
ALLAMAKEY	-	-	-	5	-	-	3	-	-	-	-	-	-	-	1	-	-	-	-	-	-	-	-	-	6	-	-	-	-	-	-	-	1	-	-	-	-	-
APPANOOSE	-	-	-	5	-	-	1	-	-	-	-	-	-	-	1	1	-	-	-	-	-	-	-	-	-	-	-	-	-	-	-	-	1	-	-	-	-	
AUDUBON	-	-	-	2	-	-	-	-	-	-	2	-	-	-	-	-	-	-	-	-	-	-	-	-	-	-	-	-	-	-	-	-	1	1	-	-	-	
BENTON	-	-	-	10	-	-	4	-	-	2	2	-	1	-	1	-	-	-	2	-	-	1	-	-	5	-	1	-	-	-	-	-	5	2	-	-	-	
BLACK HAWK	-	1	-	15	-	-	3	-	-	4	-	-	-	6	1	-	-	20	-	-	-	-	-	4	1	193	-	5	-	-	1	23	24	-	-	-		
BOONE	-	-	-	6	-	-	1	-	-	-	-	-	-	1	-	-	-	1	-	-	-	-	-	3	-	8	-	-	-	-	-	4	1	-	-	-		
BREMER	-	-	-	2	-	-	1	-	-	-	-	-	-	1	-	-	-	-	-	-	-	-	-	-	-	8	-	-	-	-	-	2	4	-	-	-		
BUCHANAN	-	-	-	4	-	-	1	-	-	-	1	-	-	-	-	-	-	-	1	-	-	1	-	3	-	5	-	1	-	-	-	5	1	-	-	-		
BUENA VISTA	-	-	-	11	-	-	3	-	-	-	-	-	-	-	-	-	-	-	2	-	-	-	1	-	-	-	-	-	-	-	-	9	3	-	-	-		
BUTLER	-	-	-	4	-	-	4	-	-	4	-	-	-	1	-	-	-	-	-	-	-	-	1	-	3	-	1	-	-	-	-	4	1	-	-	-		
CALHOUN	-	-	-	8	-	-	1	-	-	-	-	-	-	1	-	-	-	-	-	-	-	-	-	-	-	-	-	-	-	-	-	1	-	-	-	-		
CARROLL	-	-	-	10	-	-	4	-	-	3	-	-	-	1	-	-	-	1	-	-	-	-	-	-	-	2	-	-	-	-	-	10	-	-	-	-		
CASS	-	-	-	3	-	-	-	-	-	1	-	-	-	1	-	-	-	-	-	-	-	-	-	-	-	-	-	2	-	-	-	2	-	-	-	-		
CEDAR	-	-	-	7	-	-	1	-	-	-	-	-	-	3	-	-	-	1	-	-	-	-	3	-	5	-	-	-	-	-	-	3	2	-	-	-		
CERRO GORDO	-	-	-	14	-	-	2	-	-	-	-	-	-	3	-	-	-	2	-	-	-	1	-	-	-	7	-	2	-	-	-	5	-	-	-	-		
CHEROKEE	-	-	-	4	-	-	1	-	-	-	-	-	-	-	-	-	-	-	-	-	-	-	-	-	-	-	-	-	-	-	-	2	-	-	-	-		
CHICKASAW	-	-	-	4	-	-	1	-	-	-	-	-	-	3	-	-	-	-	-	-	-	-	1	-	2	-	-	-	-	-	-	17	1	-	-	-		
CLARKE	-	-	-	8	-	-	1	-	-	-	-	-	-	2	-	-	-	-	-	-	-	-	-	-	-	-	-	-	-	-	-	4	-	-	-	1		
CLAY	-	-	-	5	-	-	1	-	-	1	-	-	-	3	-	-	-	-	-	-	-	-	-	-	-	-	-	-	-	-	-	3	1	-	-	-		
CLAYTON	1	-	-	11	-	-	5	-	-	3	1	1	-	1	-	-	-	-	-	-	-	-	12	-	4	-	3	-	-	-	-	3	4	-	-	-		
CLINTON	-	-	-	4	-	-	1	-	-	-	-	-	-	1	-	-	-	1	-	-	-	-	3	-	2	-	-	-	-	-	-	11	3	-	-	-		
CRAWFORD	-	-	-	6	-	-	3	-	-	3	-	-	-	2	1	-	-	1	-	-	-	-	-	-	-	-	-	-	-	-	-	2	-	-	-	-		
DALLAS	-	-	-	20	1	-	15	1	-	7	-	-	-	10	1	-	-	3	-	-	1	1	-	3	-	1	-	2	-	-	-	18	16	-	-	1		
DAVIS	-	-	-	6	-	-	2	-	-	-	-	-	-	-	-	-	-	-	-	-	-	-	-	-	-	-	-	-	-	-	-	-	-	-	-	-		
DECATUR	-	-	-	4	-	-	-	-	-	1	-	-	-	1	-	-	-	1	-	-	-	-	-	-	-	1	-	-	-	-	-	2	-	-	-	-		
DELAWARE	-	-	-	14	-	-	6	-	-	2	-	-	-	2	-	-	-	1	-	-	-	-	9	-	14	-	-	-	-	-	-	-	5	-	-	-	-	
DES MOINES	-	-	-	11	-	-	6	-	-	-	-	-	-	2	-	-	-	-	-	-	-	-	2	-	-	-	-	-	-	-	-	-	4	4	-	-	-	
DICKINSON	-	-	-	1	-	-	6	-	-	-	-	-	-	3	-	-	-	1	-	-	-	-	1	-	1	-	1	-	-	-	-	7	2	-	-	-		
DUBUQUE	-	-	-	63	-	-	53	-	-	28	-	-	-	23	1	-	-	3	-	-	-	-	20	-	4	-	-	-	-	-	-	30	267	-	1	-		
EMMET	-	-	-	5	-	-	1	-	-	-	-	-	-	-	-	-	-	-	-	-	-	-	-	-	-	-	-	-	-	-	-	1	1	-	-	-		
FAYETTE	1	-	-	12	-	-	3	-	-	1	-	-	-	-	-	-	-	-	-	-	-	-	2	-	4	-	2	-	-	-	-	2	-	-	-	-		
FLOYD	-	-	-	8	-	-	1	-	-	1	-	-	-	-	-	-	-	-	-	-	-	-	-	-	-	1	-	-	-	-	-	14	-	-	-	-		
FRANKLIN	-	-	-	6	-	-	-	-	-	3	-	-	-	-	-	-	-	-	-	-	-	-	-	-	-	1	-	-	-	-	-	-	-	-	-	-		
FREMONT	-	-	-	4	-	-	-	-	-	-	-	-	-	-	-	-	-	-	-	-	-	-	-	-	-	-	-	-	-	-	-	1	1	-	-	-		

12 Month Case Counts by County G-O

July 1, 2015 – June 30, 2016

Confirmed and Probable Cases

	Anaplasmosis phagocytophilum	Bot-Infant	Brucellosis not temporally/spatially clustered	Campy	Chikungunya Non-neuroinvasive	Cholera	Crypto	Cyclo	Dengue	Dengue-Like Illness	E.COLI SHGT	Ehrlichioses chaffeensis	Ehrlichioses/Anaplasmosis undetermined	Enteric-HUS	Giardia	Hep A	Hep E	Hepatitis B acute	Hepatitis B chronic	Hepatitis D co-infection - acute	HIB	Legionellosis Legionnaires disease	Legionellosis Pontiac fever	Listeria	Lyme	Malaria	Mumps	N. Meng.	Pertussis	Q Fever Acute	Q Fever Chronic	RMSF	Salm	Shig	Typh Fvr	VISA	WNV		
GREENE	-	-	-	4	-	-	-	-	-	-	-	-	-	-	1	-	-	-	-	-	-	-	-	-	-	-	-	-	-	-	-	-	-	-	-	-	-		
GRUNDY	-	-	-	3	-	-	-	-	-	-	3	-	-	-	-	-	-	-	-	-	-	-	-	-	-	-	7	-	-	-	-	-	-	4	3	-	-	-	
GUTHRIE	-	-	-	3	-	-	2	-	-	-	2	-	-	-	1	-	-	-	-	-	-	-	-	-	-	-	-	-	-	-	-	-	2	-	-	-	-		
HAMILTON	-	-	-	4	-	-	1	-	1	-	-	-	-	-	-	-	-	-	-	-	-	-	-	-	-	-	-	-	-	-	-	3	-	-	-	-	-		
HANCOCK	-	-	-	6	-	-	1	-	-	-	-	-	-	-	-	-	-	-	1	-	-	-	-	-	-	2	-	-	-	-	-	1	-	-	-	-	1		
HARDIN	-	-	-	6	-	-	1	-	1	-	1	-	-	-	2	-	-	1	-	-	-	-	-	-	-	9	-	-	-	-	-	2	-	-	-	-	-		
HARRISON	-	-	-	5	-	-	2	-	-	-	3	-	-	-	-	-	-	-	1	-	-	-	-	-	-	1	1	2	-	-	-	5	1	-	-	-	-		
HENRY	-	-	-	2	-	-	3	-	-	-	-	-	-	-	-	-	-	-	-	-	-	-	-	-	-	-	-	-	-	-	-	3	1	-	-	-	-		
HOWARD	-	-	-	6	-	-	-	-	-	-	1	-	-	-	-	-	-	-	-	-	-	-	-	-	1	-	-	-	-	-	-	3	-	-	-	-	-		
HUMBOLDT	-	-	-	5	-	-	4	-	-	-	2	-	-	-	-	-	-	-	-	-	-	-	-	-	-	-	-	-	-	-	-	-	1	-	-	-	-		
IDA	-	-	-	-	-	-	1	-	-	-	-	-	-	-	-	-	-	-	-	-	-	-	-	-	-	-	-	-	-	-	-	2	-	-	-	-	-		
IOWA	-	-	-	6	-	-	2	-	-	-	3	-	-	-	2	-	-	-	-	-	-	-	-	-	2	2	-	-	-	-	-	2	1	-	-	-	-		
JACKSON	-	-	-	14	-	-	15	-	-	-	6	-	-	-	-	-	-	-	1	-	-	-	-	-	2	-	-	-	-	-	-	1	5	-	-	-	-		
JASPER	-	-	-	10	-	-	6	-	-	-	-	-	-	3	1	-	-	-	1	-	-	-	-	-	-	-	-	-	-	-	-	9	-	-	-	-	-		
JEFFERSON	2	-	-	2	-	-	8	-	-	-	1	-	-	2	-	-	-	3	-	-	-	-	-	2	-	-	-	9	-	-	3	-	1	-	-	-	-		
JOHNSON	-	-	-	19	-	-	7	-	-	-	9	-	-	8	-	-	1	11	-	-	2	1	-	51	1	425	-	13	-	-	26	14	2	-	-	-	-		
JONES	-	-	-	14	-	-	6	-	-	-	-	-	-	3	-	-	-	-	-	-	1	-	-	3	-	-	-	-	-	-	3	7	-	-	-	-	-		
KEOKUK	-	-	-	5	-	-	9	-	-	-	2	-	-	1	-	-	-	-	-	-	-	-	-	1	-	-	-	-	-	-	3	1	-	-	-	-	-		
KOSSUTH	-	-	-	6	-	-	1	-	-	-	-	-	-	2	-	-	-	-	-	-	-	-	-	-	-	-	-	-	-	-	2	-	-	-	-	-	-		
LEE	-	-	-	4	-	-	1	-	-	-	2	1	-	1	2	-	-	1	-	-	-	-	-	-	-	-	1	-	1	-	5	-	-	-	-	1	-		
LINN	-	-	-	64	-	-	25	-	-	-	12	-	-	15	5	-	1	27	1	-	1	1	-	25	2	35	-	1	-	1	42	74	1	-	-	-	-		
LOUISA	-	-	-	4	-	-	-	-	-	-	-	-	-	-	-	-	-	2	-	-	-	-	-	-	-	1	-	1	-	1	-	-	-	-	-	1	-		
LUCAS	-	-	-	5	-	-	1	-	-	-	2	-	-	-	-	-	-	-	-	-	-	-	-	-	-	1	-	3	-	-	2	-	-	-	-	-	-		
LYON	-	-	-	18	-	-	9	-	-	-	4	-	-	9	-	-	-	-	-	-	-	-	-	-	-	-	-	-	-	-	8	1	-	-	-	-	1	-	
MADISON	-	-	-	5	-	-	5	-	-	-	2	-	-	1	-	-	-	-	-	-	-	-	-	2	-	4	-	-	1	-	1	-	-	-	-	-	-	-	
MAHASKA	-	-	-	5	-	-	2	-	-	-	3	-	-	-	-	-	1	-	-	-	-	-	-	-	-	-	-	-	1	-	8	-	-	-	-	-	2	-	
MARION	-	-	-	12	-	-	2	-	-	-	1	-	-	1	-	-	-	-	-	-	1	-	-	3	1	3	-	-	-	-	9	1	-	-	-	-	-	-	
MARSHALL	-	-	-	11	-	-	-	-	-	-	6	-	-	3	-	-	-	-	9	-	-	1	-	4	1	1	-	14	-	-	7	1	-	-	-	-	-		
MILLS	-	-	-	5	-	-	2	-	-	-	-	-	-	1	-	-	-	1	-	-	-	-	-	-	-	-	-	-	-	-	2	9	-	-	-	-	-		
MITCHELL	-	-	-	5	-	-	3	-	-	-	-	-	-	2	-	-	-	-	-	-	-	-	-	-	-	2	-	-	-	-	1	-	-	-	-	-	-	-	
MONONA	-	-	-	8	-	-	11	-	-	-	-	-	-	3	-	-	-	-	-	-	-	-	-	-	-	-	-	2	-	-	3	-	-	-	-	-	-		
MONROE	-	-	-	6	-	-	4	-	-	-	1	-	-	2	-	-	-	-	-	-	-	-	-	1	-	-	-	4	-	-	-	-	-	-	-	-	-		
MONTGOMERY	-	-	-	1	-	-	-	-	-	-	1	-	-	-	-	-	-	-	-	-	-	-	-	2	-	-	-	-	-	-	-	-	-	-	1	-	-	-	
MUSCATINE	-	-	-	2	-	-	5	-	-	-	2	-	-	5	-	-	-	1	-	-	-	-	-	6	-	20	-	1	-	-	11	4	-	-	-	-	-	-	
O'BRIEN	-	-	-	11	-	-	1	-	-	-	3	-	-	1	-	-	-	-	-	-	-	-	-	-	-	1	-	-	-	-	3	-	-	-	-	-	-	-	
OSCEOLA	-	-	-	3	-	-	-	-	-	-	-	-	-	1	-	-	-	-	-	-	-	-	-	-	-	1	-	-	-	-	-	-	-	-	-	-	-	-	-

12 Month Case Counts by County P-W

July 1, 2015 – June 30, 2016

Confirmed and Probable Cases

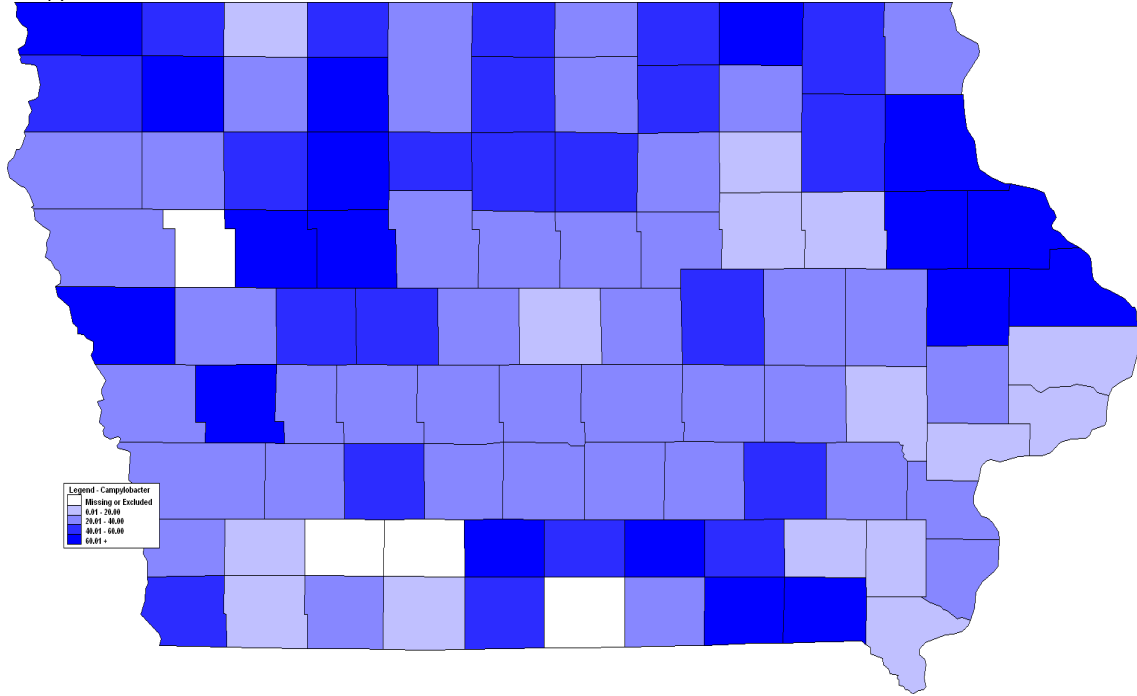
	Anaplasmosis phagocytophilum	Bot-Infant	Brucellosis not temporally/spatially clustered	Campy	Chikungunya Non-neuroinvasive	Cholera	Crypto	Cycto	Dengue	Dengue-Like illness	E.COLI SHGT	Ehrlichioses chaffeensis	Ehrlichioses/Anaplasmosis undetermined	Enteric-HUS	Giardia	Hep A	Hep E	Hepatitis B acute	Hepatitis B chronic	Hepatitis D co-infection - acute	HIB	Legionellosis Legionaires disease	Legionellosis Pontiac fever	Listeria	Lyme	Malaria	Mumps	N. Meng.	Pertussis	Q Fever Acute	Q Fever Chronic	RMSF	Salm	Shig	Typh Fvr	VISA	WNV		
PAGE	-	-	-	3	-	-	2	-	-	-	4	-	-	-	1	-	-	-	-	-	-	-	-	-	-	-	-	-	-	-	-	-	-	-	-	-	-		
PALO ALTO	-	-	-	6	-	-	-	-	-	-	-	-	-	-	-	-	-	-	-	-	-	-	-	-	-	-	1	-	-	-	-	-	-	-	-	-	-	-	
PLYMOUTH	-	-	-	9	-	-	8	-	-	-	2	-	-	-	2	-	-	-	-	-	-	-	-	-	-	-	6	-	-	-	-	-	-	5	11	-	-	1	
POCAHONTAS	-	-	-	5	-	-	-	-	-	-	1	-	-	-	-	-	-	-	-	-	-	-	-	-	-	-	-	-	-	-	-	-	-	2	-	-	-		
POLK	-	-	1	93	1	-	18	2	1	-	11	-	-	1	33	3	2	3	70	-	-	3	1	1	1	11	8	18	-	26	-	1	-	1	71	86	-	1	
POTTAWATTAMIE	-	-	-	23	-	-	12	-	-	-	4	-	-	-	4	-	1	6	-	-	-	1	1	-	-	-	1	-	2	-	-	-	16	4	-	-	-		
POWESHIEK	-	-	-	5	-	-	-	-	-	-	-	-	-	-	1	-	-	-	-	-	-	-	-	-	1	-	-	-	-	-	-	-	2	-	-	-	-	-	
RINGGOLD	-	-	-	1	-	-	2	-	-	-	-	-	-	-	-	-	-	-	-	-	-	-	-	-	-	-	-	5	-	-	-	-	-	-	-	-	1		
SAC	-	-	-	10	-	-	1	-	-	-	1	-	-	-	-	-	-	-	-	-	-	-	-	-	-	-	1	-	-	-	-	-	6	-	-	-	-	-	
SCOTT	-	-	-	24	-	-	6	-	1	-	5	-	-	-	7	2	1	1	16	-	-	4	-	-	10	1	12	1	23	-	-	1	23	75	1	1	-	-	
SHELBY	-	-	-	9	-	-	4	-	-	-	2	-	-	-	1	-	-	-	-	-	-	-	-	-	-	7	-	-	-	-	-	-	1	3	-	-	-	-	
SIoux	-	-	-	18	-	-	26	-	-	-	4	-	-	2	12	-	-	-	-	-	-	-	1	-	3	2	-	-	-	-	-	-	25	1	-	-	-	-	
STORY	-	-	1	15	1	-	11	-	-	-	5	-	-	-	2	1	-	-	13	-	-	1	-	2	2	61	-	1	1	-	-	-	14	5	1	-	-	-	
TAMA	-	-	-	9	-	-	-	-	-	-	3	-	-	-	2	-	-	-	1	-	-	-	-	-	-	2	-	22	-	-	-	-	5	1	-	-	-	1	
TAYLOR	-	-	-	2	-	-	-	-	-	-	-	-	-	-	-	-	-	-	-	-	-	-	-	-	-	-	-	-	-	-	-	-	1	-	-	-	-	-	
UNION	-	-	-	-	-	-	-	-	-	-	-	-	-	-	-	-	-	-	-	-	-	-	-	-	-	-	-	-	-	-	-	-	-	-	-	-	-	-	
VAN BUREN	-	-	-	7	-	-	5	-	-	-	-	-	-	-	-	-	-	1	-	-	-	-	-	-	-	-	-	-	-	-	-	-	3	-	-	-	-	-	
WAPELLO	-	-	-	18	-	-	14	-	-	-	1	-	-	-	-	-	-	4	-	-	-	1	-	-	1	-	1	-	-	-	-	1	3	1	-	-	-	-	
WARREN	-	-	-	15	-	1	2	-	-	-	3	-	-	-	3	-	1	-	-	-	-	1	-	-	-	20	-	1	-	1	-	16	7	-	-	-	-	1	
WASHINGTON	-	-	-	6	-	-	1	-	-	-	2	-	-	-	-	-	-	-	-	-	-	-	-	-	1	-	4	-	-	-	-	-	5	-	-	-	-	-	
WAYNE	-	-	-	-	-	-	1	-	-	-	-	-	-	-	-	-	-	-	-	-	-	-	-	-	1	-	-	-	-	-	-	1	1	-	-	-	-	-	-
WEBSTER	-	-	-	13	-	-	3	-	-	-	1	-	-	-	4	1	-	-	-	-	-	-	-	-	-	-	-	-	-	-	-	-	4	1	-	-	-	-	-
WINNEBAGO	-	-	-	6	-	-	-	-	-	-	-	-	-	-	-	-	-	-	-	-	-	-	-	-	-	-	-	-	-	-	-	-	-	-	-	-	-	-	-
WINNESHIEK	1	-	-	12	-	-	1	-	-	-	3	-	-	-	1	-	-	-	-	-	-	-	-	-	5	-	7	-	1	-	-	-	4	-	-	-	-	-	-
WOODBURY	-	-	-	22	-	-	16	-	-	-	7	-	-	-	10	-	-	7	-	-	-	1	-	-	1	-	1	-	1	-	-	22	17	-	-	-	-	-	-
WORTH	-	-	-	3	-	-	1	-	-	-	-	-	-	-	-	-	-	-	-	-	-	-	-	-	-	-	1	-	-	-	-	2	-	-	-	-	-	-	-

Campylobacteriosis Summary

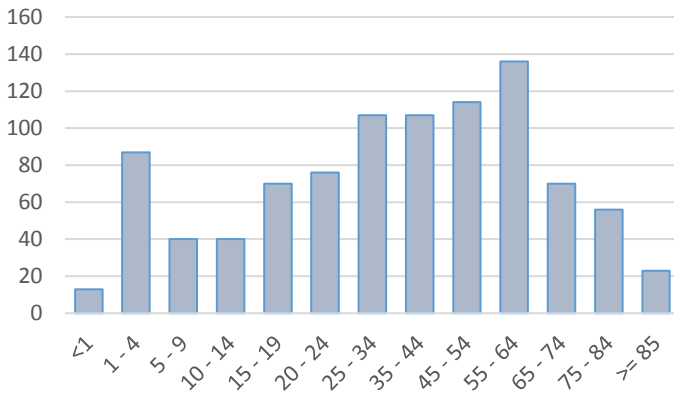
July 1, 2015 – June 30, 2016

Confirmed and Probable Cases

Campylobacteriosis Rates / 100,000

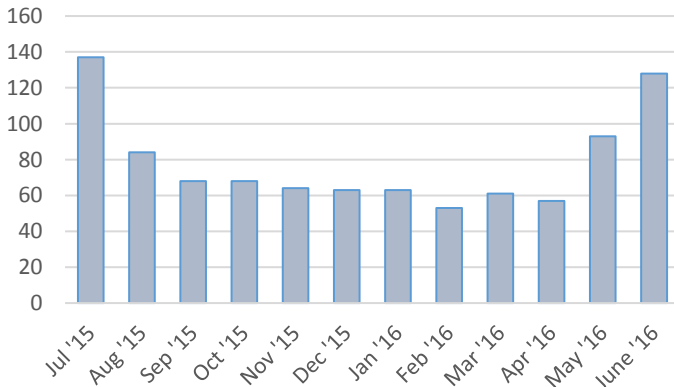


12 MONTH CAMPYLOBACTERIOSIS CASES BY AGE

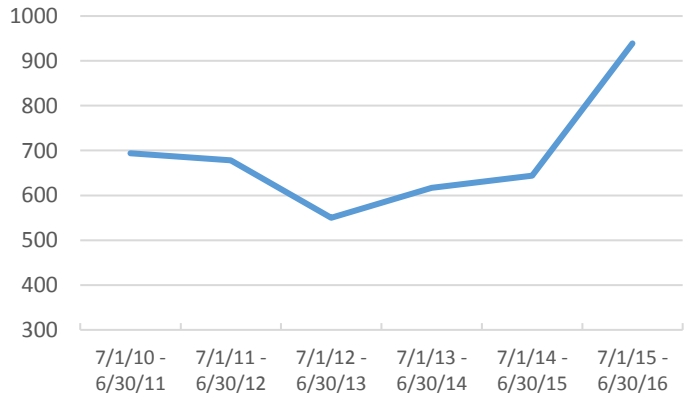


Summary				
Number of Cases	939			
Incidence rate (per 100,000 population)	30.8			
Percent change from previous 5 yr AVG (%)	47.4			
Age (in years)				
Mean	39			
Median	38			
Min-Max	0-102			
Gender		Number	Percent	Rate
Female	430	45.8	14.1	
Male	487	51.9	16.0	
Unknown	22	2.3		

12 MONTH CAMPYLOBACTERIOSIS REPORTS BY MONTH



5-YEAR CAMPYLOBACTERIOSIS DISEASE TREND

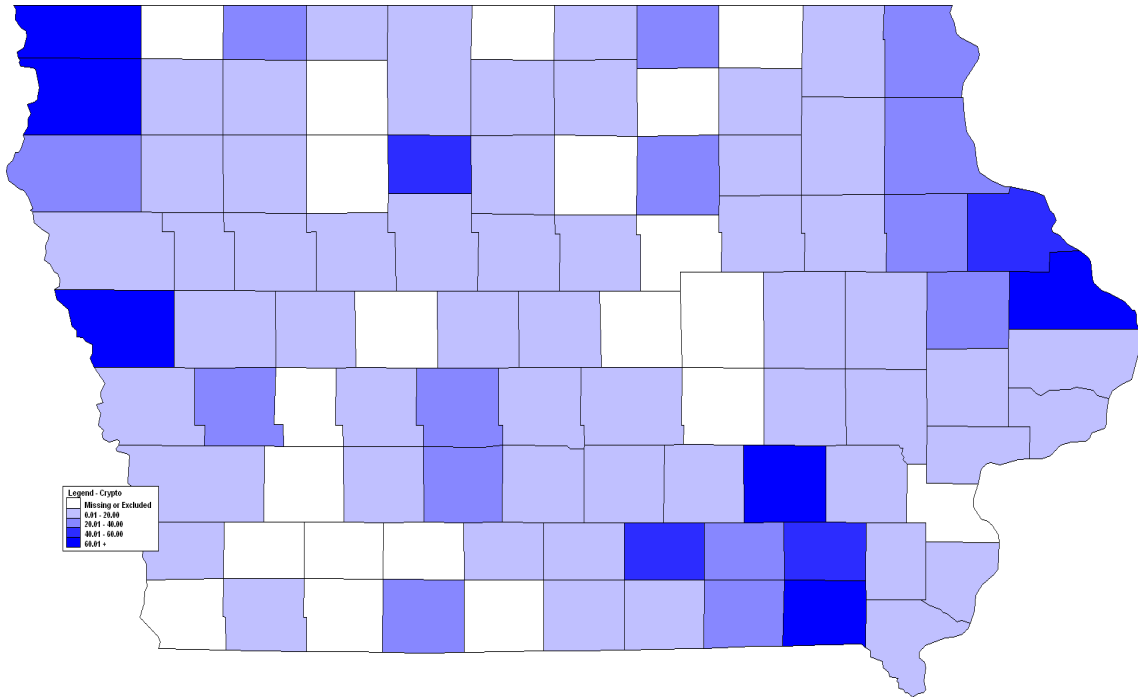


Cryptosporidiosis Summary

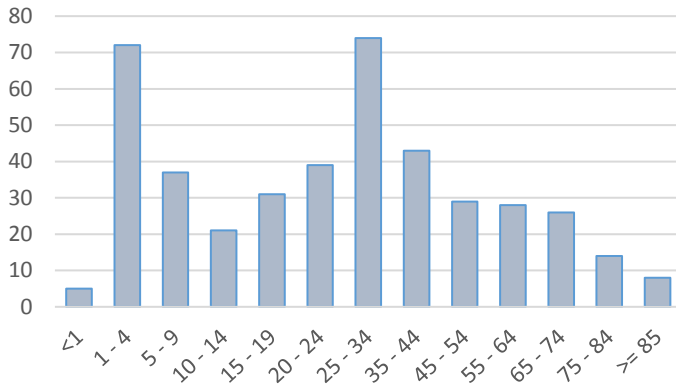
July 1, 2015 – June 30, 2016

Confirmed and Probable Cases

Cryptosporidiosis Rates / 100,000

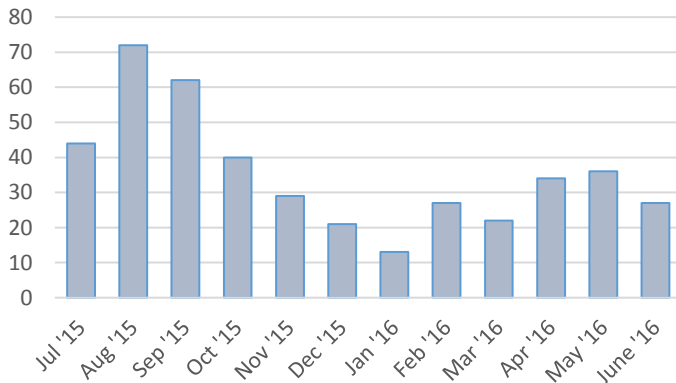


12 MONTH CYTOSPORIDIOSIS CASES BY AGE

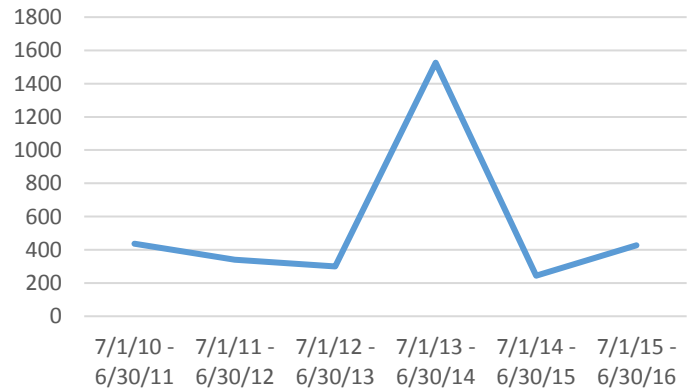


Summary				
Number of Cases	427			
Incidence rate (per 100,000 population)	14.0			
Percent change from previous 5 yr AVG (%)*	29.4			
Age (in years)				
Mean	30			
Median	26			
Min-Max	0-95			
Gender		Number	Percent	Rate
Female	226	52.9	7.4	
Male	195	45.7	6.4	
Unknown	6	1.4		
* Outbreak years excluded from calculations				

12 MONTH CRYPTOSPORIDIOSIS CASES BY MONTH

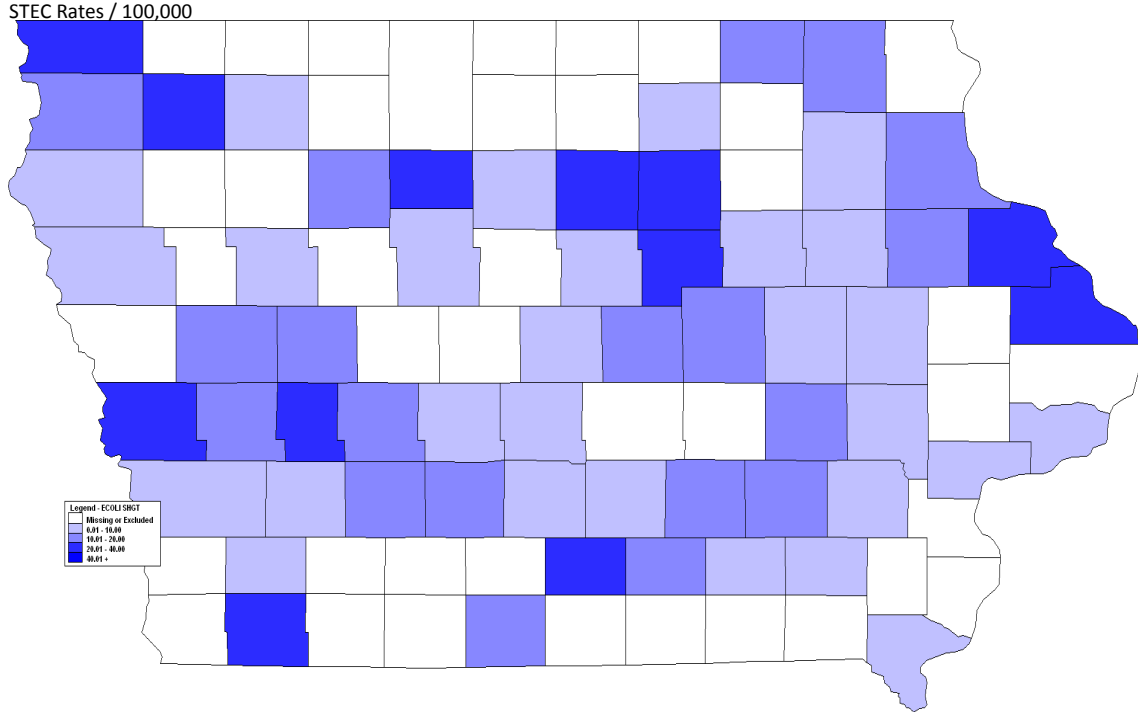


5 YEAR CRYPTOSPORIDIOSIS TREND

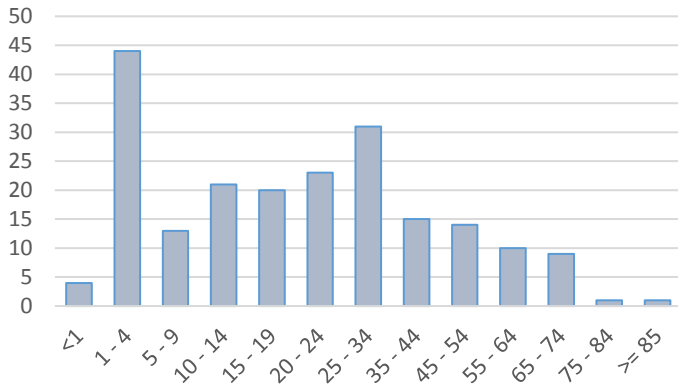


E. coli (STEC) Summary

July 1, 2015 – June 30, 2016
Confirmed and Probable Cases

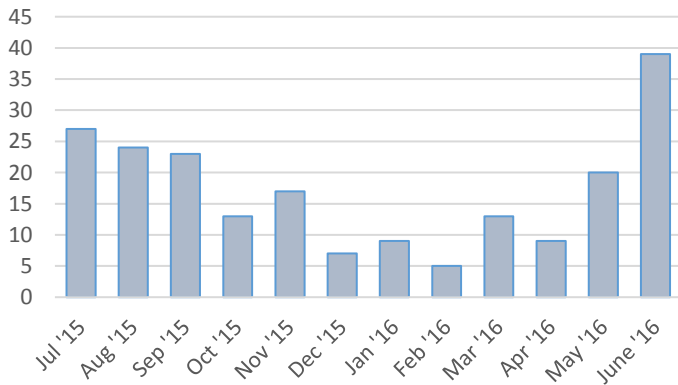


12 MONTH E. coli (STEC) CASES BY AGE

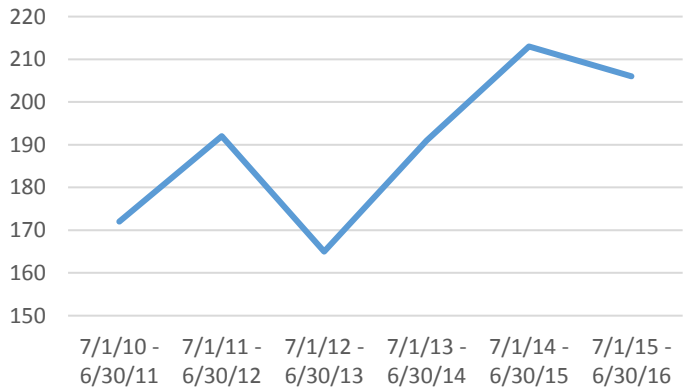


Summary			
Number of Cases	206		
Incidence rate (per 100,000 population)	6.8		
Percent change from previous 5 yr AVG (%)	10.2		
Age (in years)			
Mean	24		
Median	20		
Min-Max	0-91		
Gender			
	Number	Percent	Rate
Female	108	52.4	3.5
Male	98	47.6	3.2
Unknown	0	0.0	

12 MONTH E. coli (STEC) REPORTS BY MONTH



5 YEAR E. coli (STEC) TREND

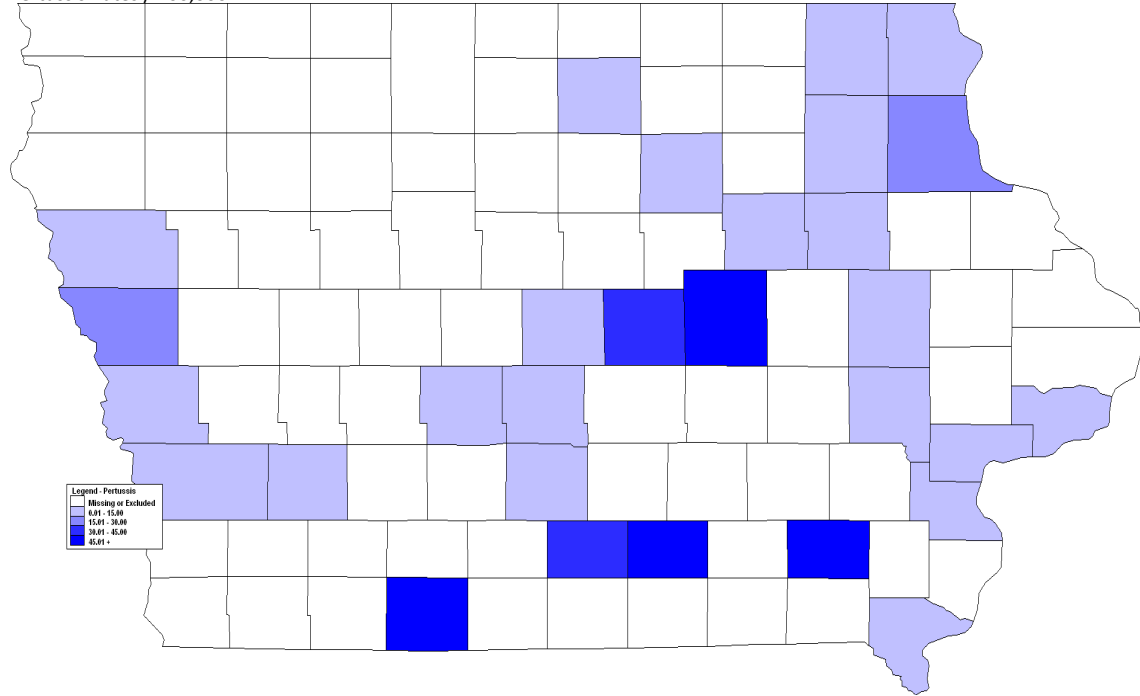


Pertussis Summary

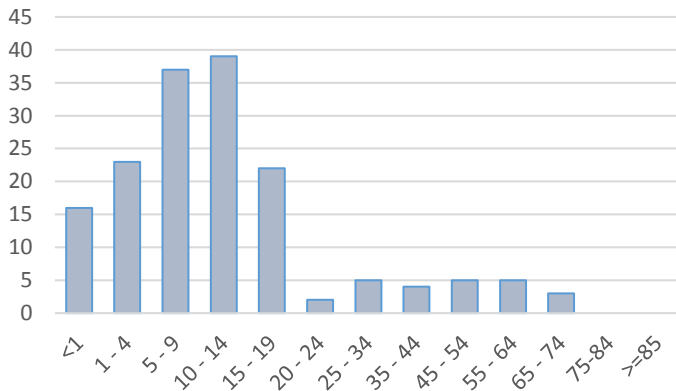
July 1, 2015 – June 30, 2016

Confirmed and Probable Cases

Pertussis Rates / 100,000



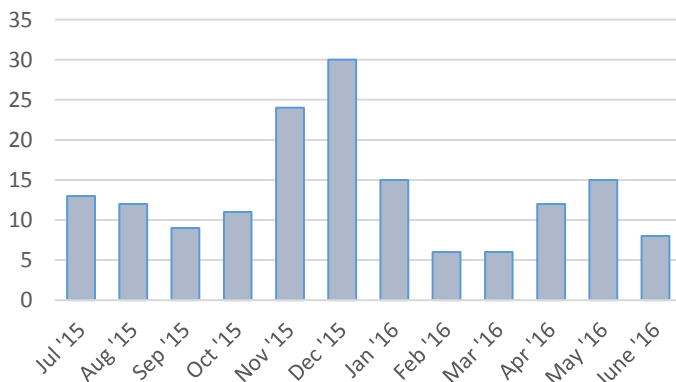
12 MONTH PERTUSSIS CASES BY AGE



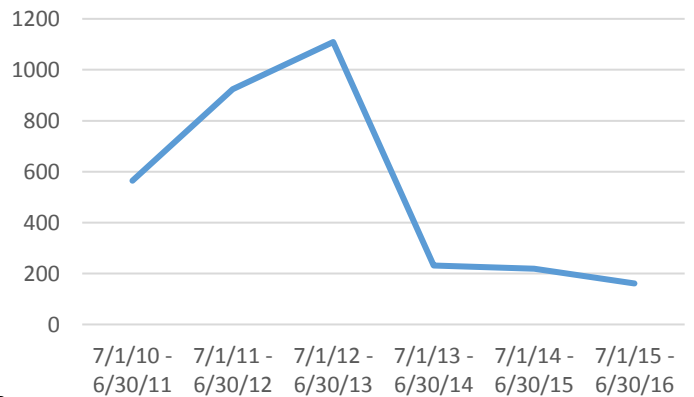
Summary				
Number of Cases	161			
Incidence rate (per 100,000 population)	5.3			
Percent change from previous 5 yr AVG (%)*	-28.4			
Age (in years)				
Mean	14			
Median	10			
Min-Max	0-71			
Gender		Number	Percent	Rate
Female	78	48.4	2.6	
Male	79	49.1	2.6	
Unknown	4	2.5		

* Outbreak years excluded from calculations

12 MONTH PERTUSSIS CASES BY MONTH

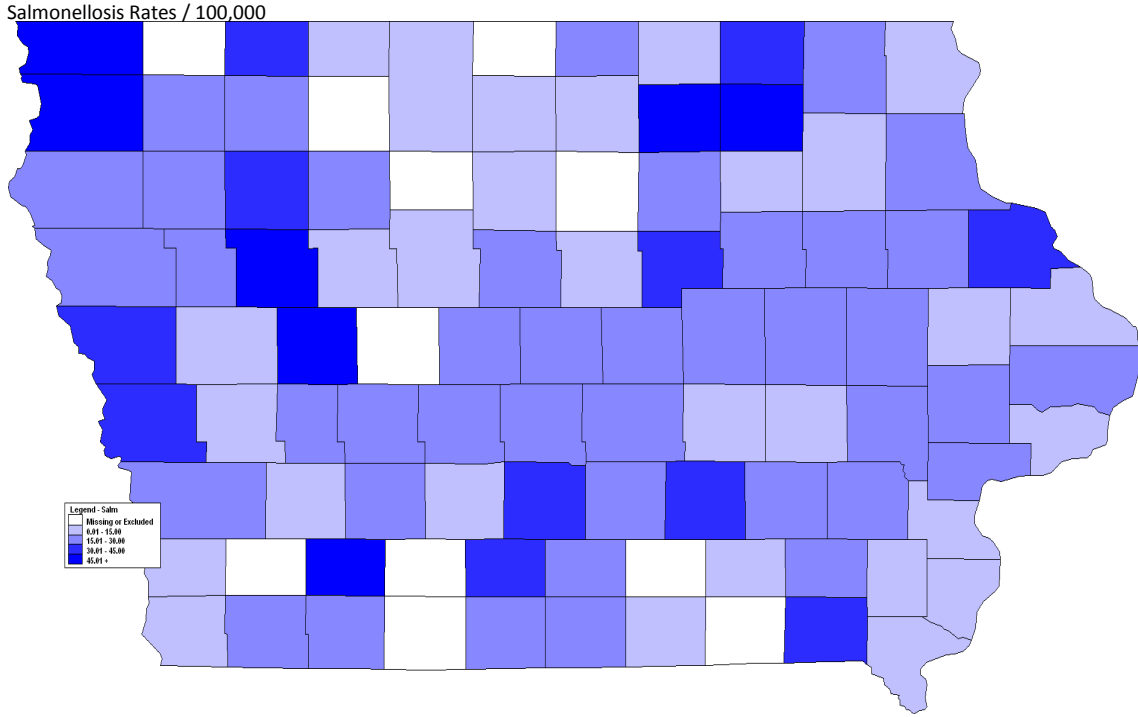


5 YEAR PERTUSSIS TREND

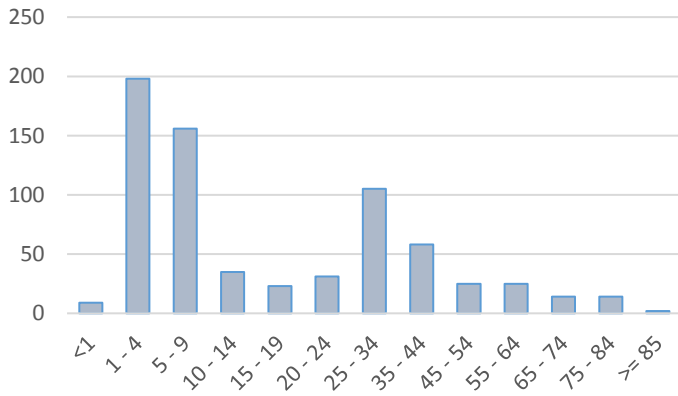


Salmonellosis Summary

July 1, 2015 – June 30, 2016
Confirmed and Probable Cases

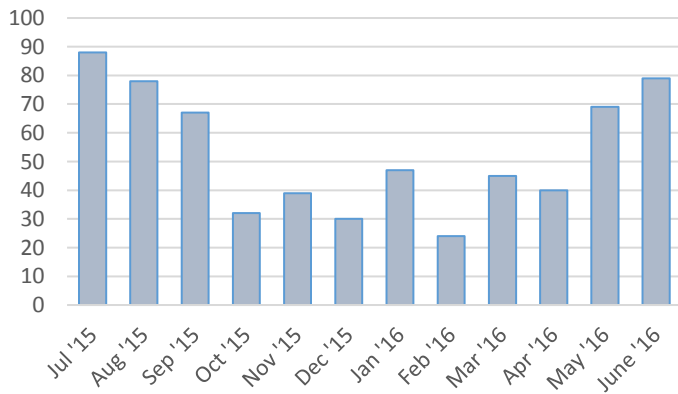


12 MONTH SALMONELLOSIS CASES BY AGE

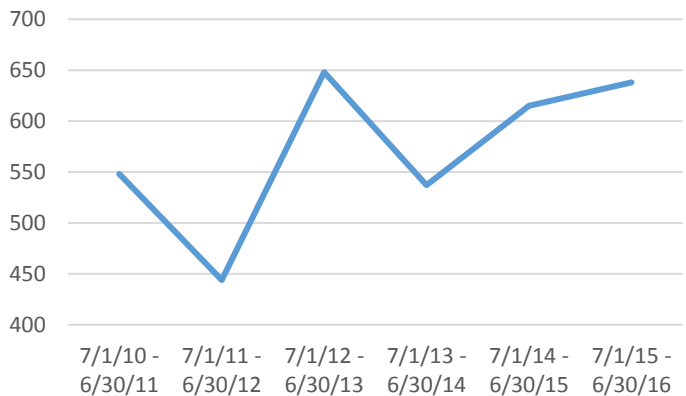


Summary				
Number of Cases	638			
Incidence rate (per 100,000 population)	20.9			
Percent change from previous 5 yr AVG (%)	14.3			
Age (in years)				
Mean	37			
Median	37			
Min-Max	0-95			
Gender		Number	Percent	Rate
Female	328	51.4	10.8	
Male	302	47.3	9.9	
Unknown	8	1.3		

12 MONTH SALMONELLOSIS CASES BY MONTH



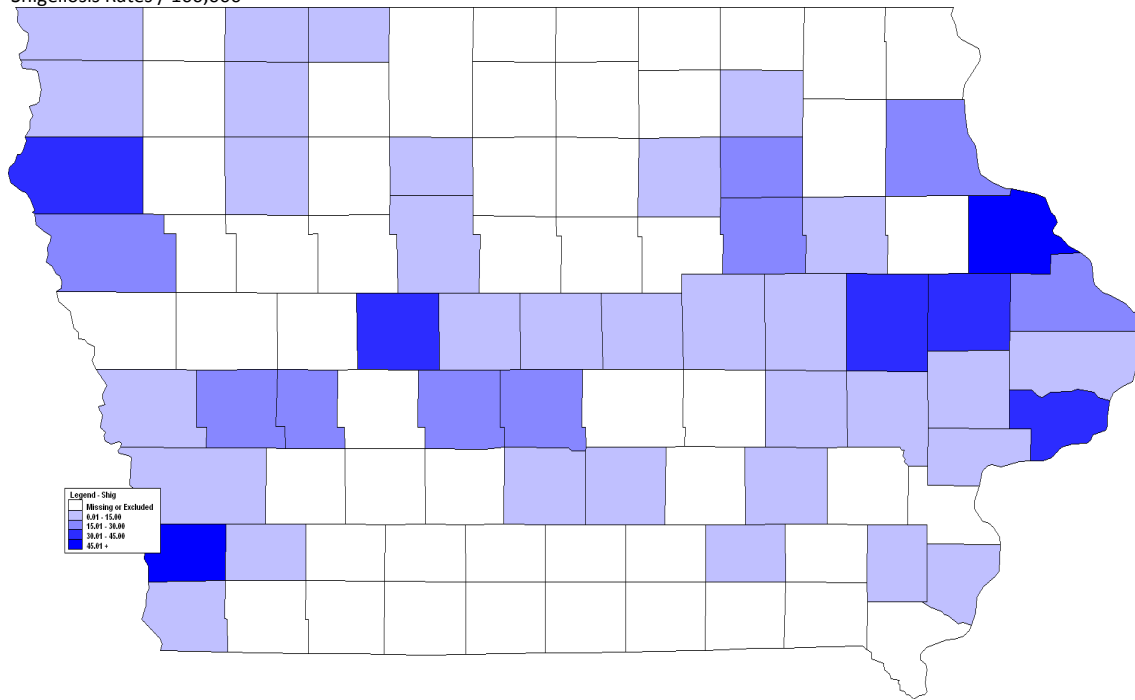
5 YR SALMONELLOSIS TREND



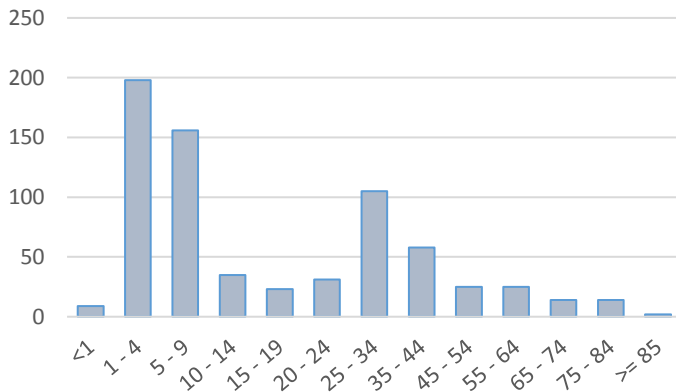
Shigellosis Summary

July 1, 2015 – June 30, 2016
Confirmed and Probable Cases

Shigellosis Rates / 100,000



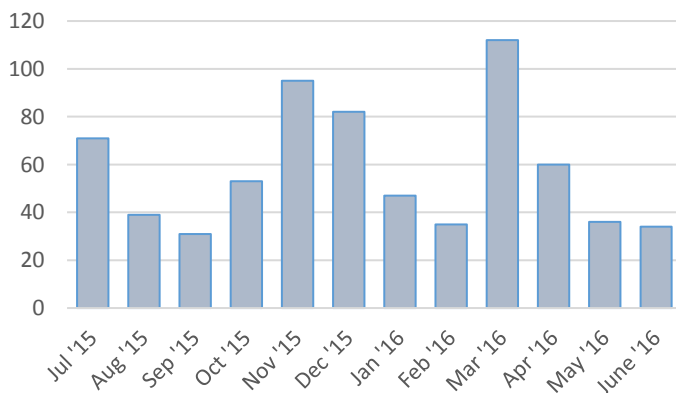
12 MONTH SHIGELLOSIS CASES BY AGE



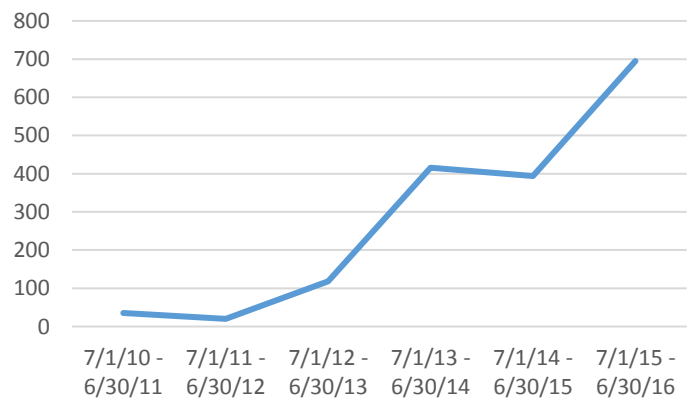
Summary

Number of Cases	695			
Incidence rate (per 100,000 population)	22.8			
Percent change from previous 5 yr AVG (%)*	2382.1			
Age (in years)				
Mean	19			
Median	9			
Min-Max	0-90			
Gender		Number	Percent	Rate
Female	381	54.8	12.5	
Male	287	41.3	9.4	
Unknown	27	3.9		
* Outbreak years excluded from calculations				

12 MONTH SHIGELLOSIS CASES BY MONTH



5 YR SHIGELLOSIS TREND



IOWA DEPARTMENT OF PUBLIC HEALTH

WWW.IDPH.IOWA.GOV

1-866-27-9878

CENTER FOR ACUTE DISEASE EPIDEMIOLOGY

WWW.IDPH.IOWA.GOV/CADE

1-800-362-2736

Gerd Clabaugh, MPA	Director
Kathy Stone	Interim Deputy Director
Ken Sharp, MPA, RS	Division Director
Patricia Quinlisk, MD, MPH	Medical Director/State Epidemiologist
Ann Garvey, DVM, MPH, MA	Public Health Veterinarian/ Deputy State Epidemiologist

CENTER FOR ACUTE DISEASE EPIDEMIOLOGY STAFF

Shawnice Cameron	Administrative Assistant
Julie Coughlin, MPH	Vector-Borne Disease Epidemiologist/ Influenza Surveillance Program Coordinator
Chris Galeazzi, MPH	Field Epidemiologist Unit Lead
Nick Kalas, MPH	Field Epidemiologist
Jill Newland	Iowa Disease Surveillance System (IDSS) Data Manager
Kemi Oni, MPH	Foodborne Disease Epidemiologist
Rob Ramaekers, MPH, CPH	Surveillance Unit Lead/Vaccine-Preventable Disease Program Coordinator
Ngoc Tran, MPA, CPM	Iowa Disease Surveillance System (IDSS) Coordinator
Diana Von Stein, MPH	Field Epidemiologist
Andy Weigel, MSW	Field Epidemiologist
Nancy Wilde, BS, LPN	Epidemiologist/Healthcare-Associated Infection Program Coordinator