



Iowa Influenza Surveillance Network (IISN)

Influenza-like Illness (ILI) and Other Respiratory Viruses

Weekly Activity Report

For the week ending May 28, 2016 - Week 21



All data presented in this report are provisional and may change as additional reports are received

Quick Stats	
Percent of outpatient visits for ILI ¹	0.22% (baseline 1.7%)
Percent of influenza rapid test positive	5.2% (11/211)
Percent of RSV rapid tests positive	0.0% (0/27)
Percent school absence due to illness ²	1.33%
Number of schools with ≥10% absence due to illness	0
Influenza-associated hospitalizations ³	1/2,150 inpatients surveyed
Influenza-associated mortality -all ages (Cumulative) ⁴	46
Influenza-associated pediatric mortality (Cumulative)	2

¹ ILI: Influenza-like illness is defined as a fever of ≥100° F as well as cough and/or sore throat.
² Percent school absence due to illness are reported through a weekly survey of Iowa sentinel schools
³ Hospitalizations due to influenza are voluntarily reported through a weekly survey of Iowa sentinel hospitals
⁴ Deaths in which influenza is listed on the death certificate. This is an underestimate of influenza-related deaths.
Cumulative is 10/4/2015-current week.

Iowa Influenza Geographic Spread ⁵
No Activity
Sporadic
Local
Regional
Widespread

⁵This is based on CDC's activity estimates definition www.cdc.gov/flu/weekly/overview.htm

Iowa statewide activity summary:

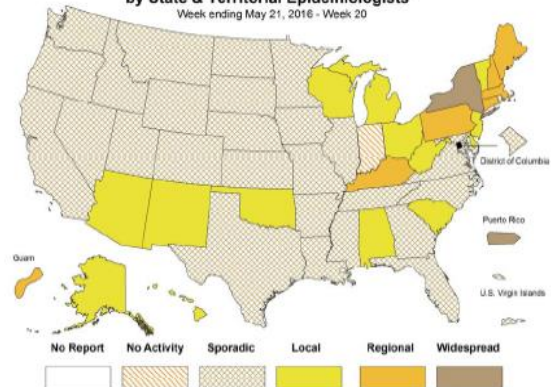
This will be the last weekly report for the 2015-2016 surveillance season. We will move to monthly surveillance reports for the summer and resume weekly reports again in the fall. The geographic spread of influenza in Iowa is sporadic. For this reporting week, the State Hygienic Laboratory did not confirm any influenza viruses. One influenza-related hospitalization was reported from sentinel hospitals. The proportion of outpatient visits due to influenza-like illness (ILI) was 0.22 percent, which is below the regional baseline. In this reporting week, 12 adenovirus, one parainfluenza virus type 1, 12 parainfluenza virus type 3, 29 rhinovirus/ enterovirus, one RSV, and five hMPV were detected from surveillance sites.

National activity summary - (CDC)-Last Updated in Week 20:

Influenza-Like Illness (ILI) Activity Level Indicator Determined by Data Reported to ILINet
2015-16 Influenza Season Week 20 ending May 21, 2016



Weekly Influenza Activity Estimates Reported by State & Territorial Epidemiologists*
Week ending May 21, 2016 - Week 20



Synopsis: During week 20 (May 15-21, 2016), influenza activity decreased in the United States.

Viral Surveillance: The most frequently identified influenza virus type reported by public health laboratories during week 20 was influenza A. The percentage of respiratory specimens testing positive for influenza in clinical laboratories decreased.

Pneumonia and Influenza Mortality: The proportion of deaths attributed to pneumonia and influenza (P&I) was below the system-specific epidemic threshold in both the NCHS Mortality Surveillance System and the 122 Cities Mortality Reporting System.

Influenza-associated Pediatric Deaths: Two influenza-associated pediatric deaths were reported.

Influenza-associated Hospitalizations: A cumulative rate for the season of 31.2 laboratory-confirmed influenza-associated hospitalizations per 100,000 population was reported.

Outpatient Illness Surveillance: The proportion of outpatient visits for influenza-like illness (ILI) was 1.3 percent, which is below the national baseline of 2.1 percent. All 10 regions reported ILI below region-specific baseline levels. Puerto Rico experienced moderate ILI activity; three states experienced low ILI activity; New York City and 46 states experienced minimal ILI activity; and the District of Columbia and one state had insufficient data.

Geographic Spread of Influenza: The geographic spread of influenza in Puerto Rico and one state was reported as widespread; Guam and six states reported regional activity; 14 states reported local activity; the District of Columbia, the U.S. Virgin Islands, and 28 states reported sporadic activity; and one state reported no activity.

Detailed information can be found online at www.cdc.gov/flu/weekly/.

International activity summary - (WHO):

Influenza activity in the northern hemisphere continued to decrease with a predominance of influenza B virus reported. In temperate countries in the southern hemisphere, influenza activity started to increase slightly in South America and South Africa, but remained low overall in most of Oceania. Detailed information can be found online at www.who.int/influenza/surveillance_monitoring/updates/latest_update_GIP_surveillance/en/. It was last updated 05/30/2016.

Laboratory surveillance program:

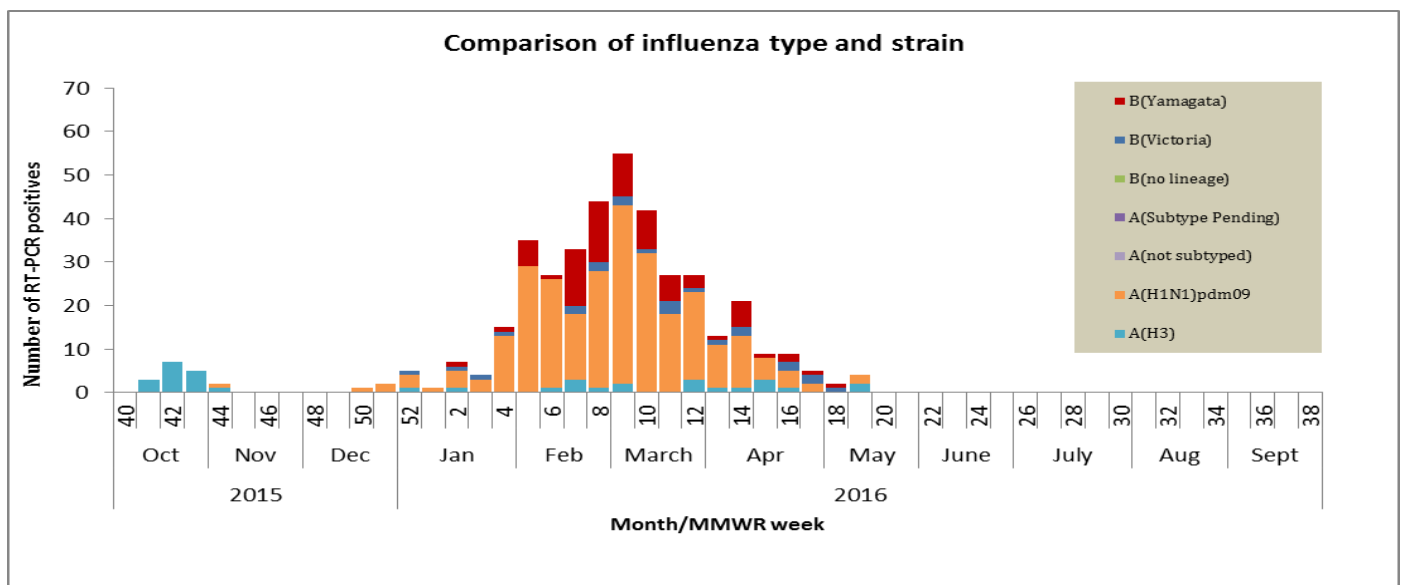
The State Hygienic Laboratory (SHL) is the primary lab for influenza testing and reporting in Iowa. SHL reports the number of tests performed and the type and sub-type of positive tests to the influenza surveillance network several times every week. In addition, SHL surveys clinical and reference labs on a weekly basis for the number of rapid-antigen tests performed, the number positive and the positive non-influenza virus tests. This report also includes the positive non-influenza virus tests reported from the Dunes Medical Laboratories at Mercy Medical Center in Sioux City.

Age Group	CURRENT WEEK				CUMULATIVE (10/4/15 – CURRENT WEEK)			
	Flu A				Flu A			
	A(H1N1)pdm09	A(H3)	Subtype Pending	Not subtyped	A(H1N1)pdm09	A(H3)	Subtype Pending	Not subtyped
0-4	0(0%)	0(0%)	0(0%)	0(0%)	36(13%)	0(0%)	0(0%)	0(0%)
5-17	0(0%)	0(0%)	0(0%)	0(0%)	43(16%)	2(6%)	0(0%)	1(14%)
18-24	0(0%)	0(0%)	0(0%)	0(0%)	35(13%)	10(28%)	0(0%)	2(29%)
25-49	0(0%)	0(0%)	0(0%)	0(0%)	77(29%)	4(11%)	0(0%)	1(14%)
50-64	0(0%)	0(0%)	0(0%)	0(0%)	52(19%)	11(31%)	0(0%)	3(43%)
>64	0(0%)	0(0%)	0(0%)	0(0%)	27(10%)	9(25%)	0(0%)	0(0%)
Total	0	0	0	0	270	36	0	7

*Counts of three or less are sometimes suppressed to protect confidentiality. Note that counts may not add up to the total due to missing age information
 Only cases of Iowa residents are included
 "Not subtyped" column is due to weak detections. This can be due to poor collection, timing of collection or stage of infection.

Age Group	CURRENT WEEK			CUMULATIVE (10/4/15 – CURRENT WEEK)		
	Flu B			Flu B		
	Victoria Lineage	Yamagata Lineage	Lineage Pending	Victoria Lineage	Yamagata Lineage	Lineage Pending
0-4	0(0%)	0(0%)	0(0%)	5(22%)	8(11%)	0(0%)
5-17	0(0%)	0(0%)	0(0%)	8(35%)	22(29%)	0(0%)
18-24	0(0%)	0(0%)	0(0%)	3(13%)	2(3%)	0(0%)
25-49	0(0%)	0(0%)	0(0%)	3(13%)	16(21%)	0(0%)
50-64	0(0%)	0(0%)	0(0%)	1(4%)	12(16%)	0(0%)
>64	0(0%)	0(0%)	0(0%)	3(13%)	16(21%)	0(0%)
Total	0	0	0	23	76	0

*Counts of three or less are sometimes suppressed to protect confidentiality. Note that counts may not add up to the total due to missing age information
 Only cases of Iowa residents are included



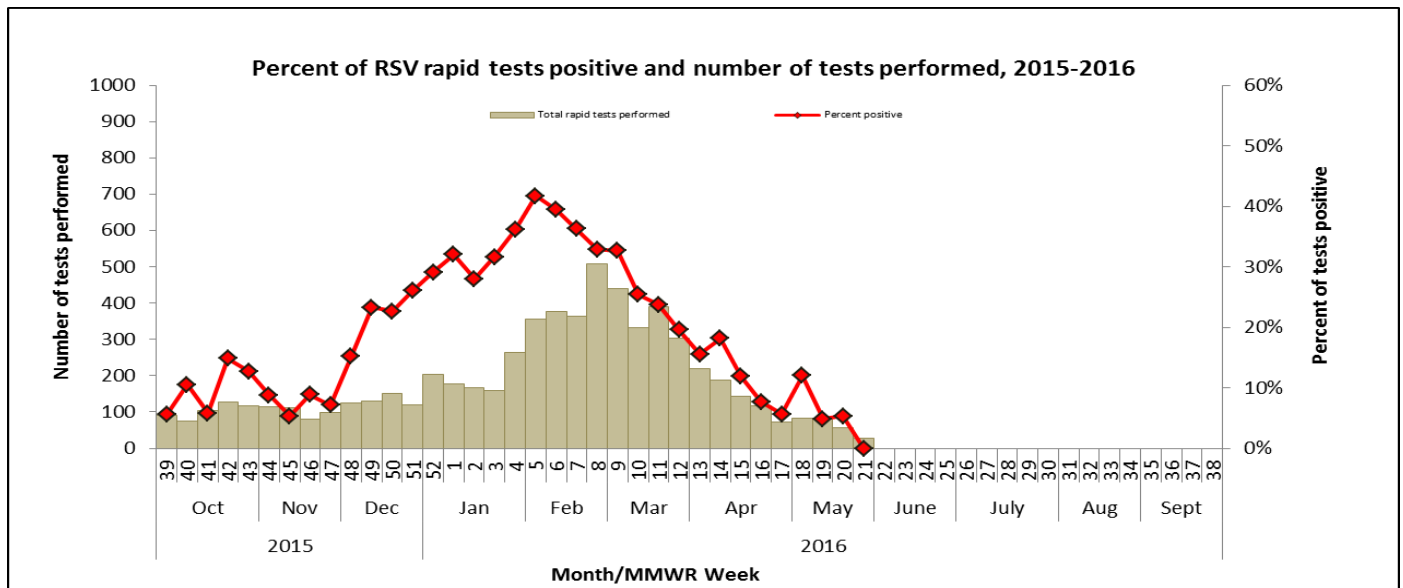
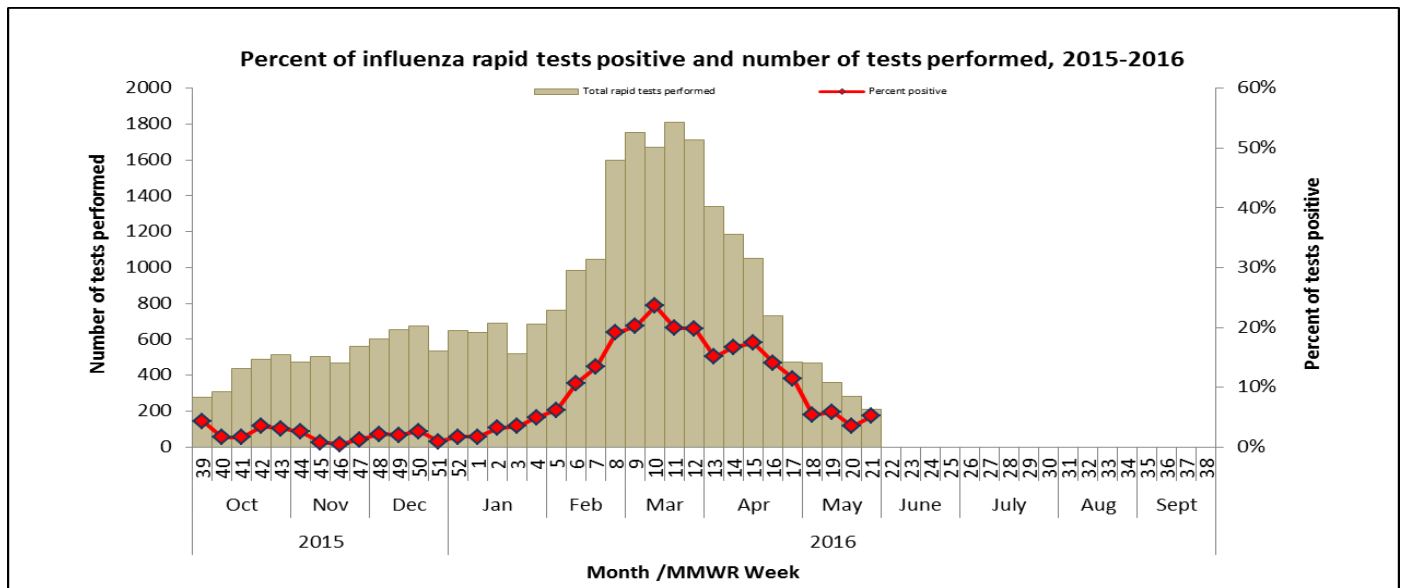
Rapid influenza and RSV test surveillance:

The State Hygienic Laboratory (SHL) runs a weekly web-based survey program where laboratorians report the number of influenza and respiratory syncytial virus (RSV) rapid tests performed and the number of tests positive. This table includes only the number of patients tested for influenza or RSV at laboratory surveillance sites throughout the state. This table does not provide case counts.

Table 2: Percent of influenza rapid tests positive and number of tests performed by region for the present week

REGION*	RAPID ANTIGEN INFLUENZA TESTS				RAPID ANTIGEN RSV TESTS		
	Tested	Flu A	Flu B	% Positive	Tested	Positive	% Positive
Region 1 (Central)	44	0	2	4.5	6	0	0.0
Region 2 (NE)	3	0	0	0.0	2	0	0.0
Region 3 (NW)	8	0	0	0.0	3	0	0.0
Region 4 (SW)	18	0	0	0.0	5	0	0.0
Region 5 (SE)	1	0	0	0.0	0	0	0.0
Region 6 (Eastern)	137	2	7	6.6	11	0	0.0
Total	211	2	9	5.2	27	0	0.0

*Region 1- Boone, Calhoun, Carroll, Dallas, Greene, Grundy, Hamilton, Hardin, Jasper, Marshall, Polk, Poweshiek, Story, Tama, Warren, Webster; Region 2- Allamakee, Bremer, Butler, Cerro Gordo, Chickasaw, Emmet, Fayette, Floyd, Franklin, Hancock, Howard, Humboldt, Kossuth, Mitchell, Winnebago, Winneshiek, Worth, Wright; Region 3- Buena Vista, Cherokee, Clay, Crawford, Dickinson, Ida, Lyon, Monona, O'Brien, Osceola, Palo Alto, Plymouth, Pocahontas, Sac, Sioux, Woodbury; Region 4- Adair, Adams, Audubon, Cass, Clarke, Decatur, Fremont, Guthrie, Harrison, Madison, Mills, Montgomery, Page, Pottawattamie, Ringgold, Shelby, Taylor, Union; Region 5- Appanoose, Davis, Des Moines, Henry, Jefferson, Keokuk, Lee, Louisa, Lucas, Mahaska, Marion, Monroe, Muscatine, Van Buren, Wapello, Washington, Wayne; Region 6- Benton, Black Hawk, Buchanan, Cedar, Clayton, Clinton, Delaware, Dubuque, Iowa, Jackson, Johnson, Jones, Linn, Scott.



Non-influenza respiratory viruses:

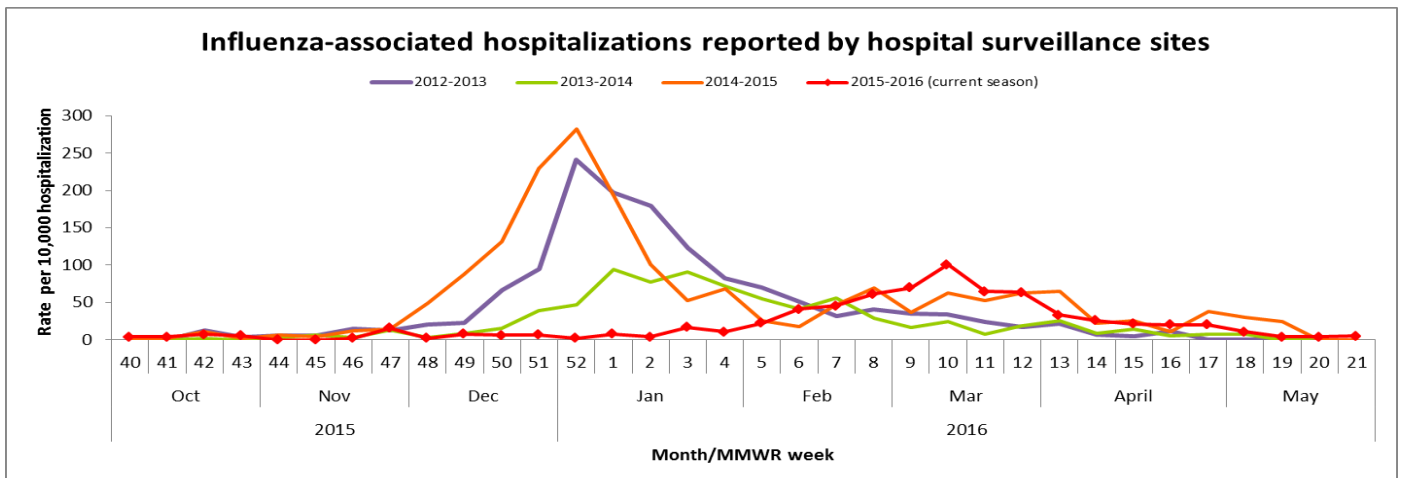
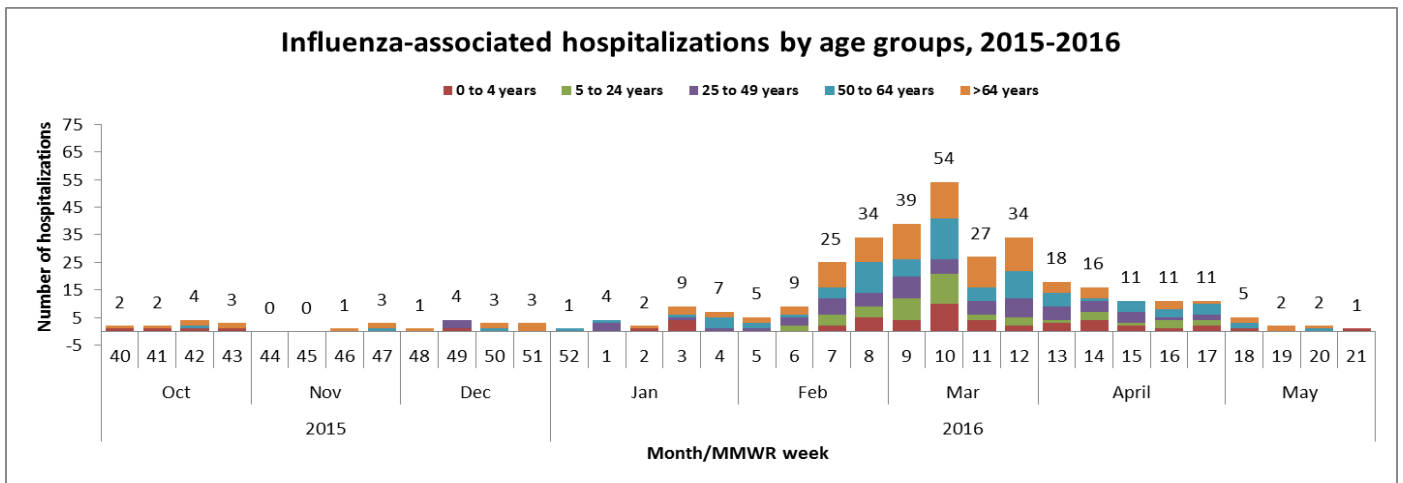
The State Hygienic Laboratory (SHL) runs a weekly web-based survey program where laboratorians report the number of positive tests for non-influenza respiratory viruses. This table also includes the positive non-influenza virus tests reported from the Dunes Medical Laboratories at Mercy Medical Center in Sioux City. The table includes only the number of positive tests at laboratory surveillance sites throughout the state. The table does not provide case counts.

Viruses	CURRENT WEEK	CUMULATIVE (10/4/15 – CURRENT WEEK)
Adenovirus	12	447
Parainfluenza Virus Type 1	1	173
Parainfluenza Virus Type 2	0	4
Parainfluenza Virus Type 3	12	33
Parainfluenza Virus Type 4	0	69
Rhinovirus/Enterovirus	29	1179
Respiratory syncytial virus (RSV)	1	709
Human metapneumovirus (hMPV)	5	368
Total	60	2982

Influenza-associated hospitalizations:

Sentinel hospitals that participate in IISN voluntarily track and report the number of influenza-associated hospitalizations and the total number of inpatients each week.

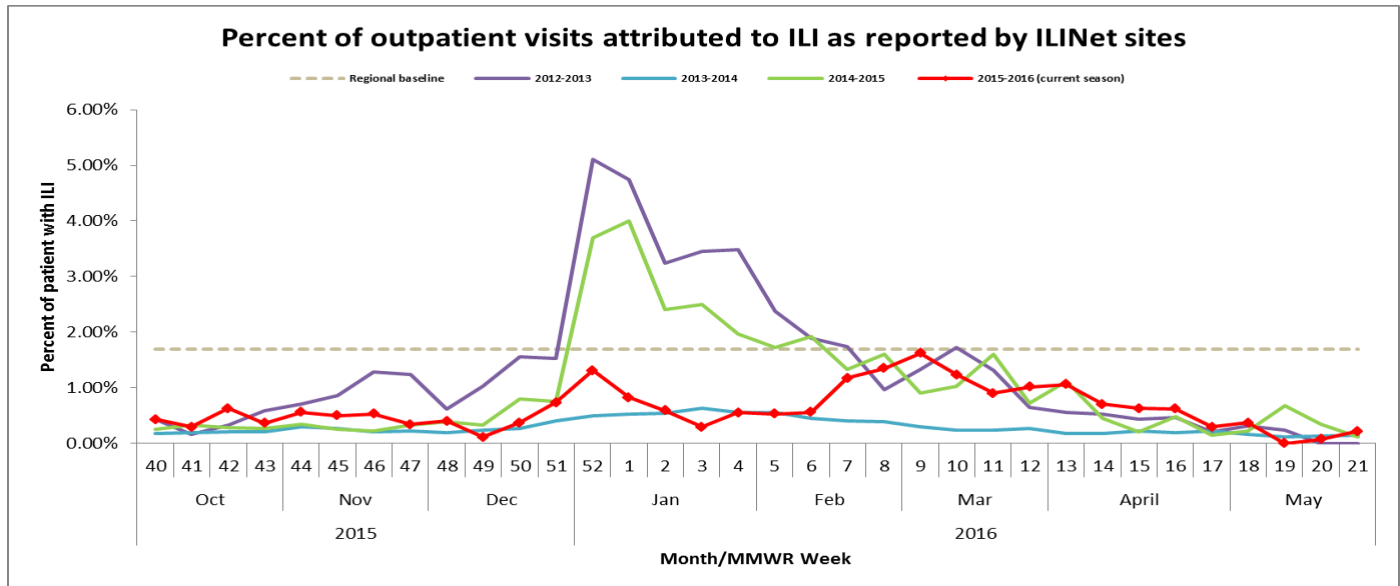
AGE	CURRENT WEEK	CUMULATIVE (10/4/15 – CURRENT WEEK)
Age 0-4	1	51
Age 5-24	0	44
Age 25-49	0	64
Age 50-64	0	84
Age >64	0	110
Total	1	353



Outpatient health care provider surveillance program (ILINet):

Outpatient health care providers who participate in the ILINet (a national influenza surveillance program) report the number of patients seen with influenza-like illness and the total number of patient visits each week. This system is a key part of Iowa's influenza surveillance. Iowa health care providers interested in joining this surveillance program should contact Julie Coughlin at 515-281-7134 or julie.coughlin@idph.iowa.gov for more information.

Week	%ILI	Total ILI	Age 0-4	Age 5-24	Age 25-49	Age 50-64	Age >64
Week 21, ending May 28	0.22	2	0	0	0	1	1
Week 20, ending May 21	0.07	1	1	0	0	0	0
Week 19, ending May 14	0.00	0	0	0	0	0	0



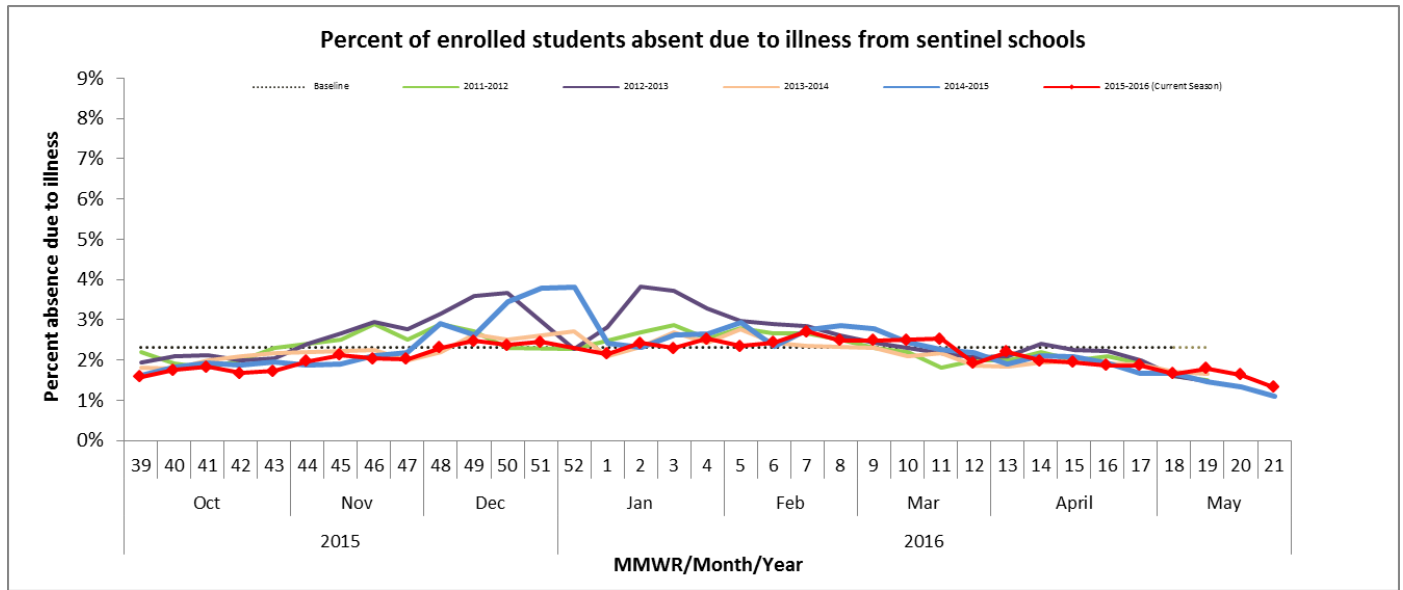
Long-term Care Outbreaks:

REGION*	CURRENT WEEK	CUMULATIVE (10/4/15 – CURRENT WEEK)
Region 1 (Central)	0	2
Region 2 (NE)	0	0
Region 3 (NW)	0	0
Region 4 (SW)	0	2
Region 5 (SE)	0	2
Region 6 (Eastern)	0	1
Total	0	7

*Region 1- Boone, Calhoun, Carroll, Dallas, Greene, Grundy, Hamilton, Hardin, Jasper, Marshall, Polk, Poweshiek, Story, Tama, Warren, Webster; Region 2- Allamakee, Bremer, Butler, Cerro Gordo, Chickasaw, Emmet, Fayette, Floyd, Franklin, Hancock, Howard, Humboldt, Kossuth, Mitchell, Winnebago, Winneshiek, Worth, Wright; Region 3- Buena Vista, Cherokee, Clay, Crawford, Dickinson, Ida, Lyon, Monona, O'Brien, Osceola, Palo Alto, Plymouth, Pocahontas, Sac, Sioux, Woodbury; Region 4- Adair, Adams, Audubon, Cass, Clarke, Decatur, Fremont, Guthrie, Harrison, Madison, Mills, Montgomery, Page, Pottawattamie, Ringgold, Shelby, Taylor, Union; Region 5- Appanoose, Davis, Des Moines, Henry, Jefferson, Keokuk, Lee, Louisa, Lucas, Mahaska, Marion, Monroe, Muscatine, Van Buren, Wapello, Washington, Wayne; Region 6- Benton, Black Hawk, Buchanan, Cedar, Clayton, Clinton, Delaware, Dubuque, Iowa, Jackson, Johnson, Jones, Linn, Scott.

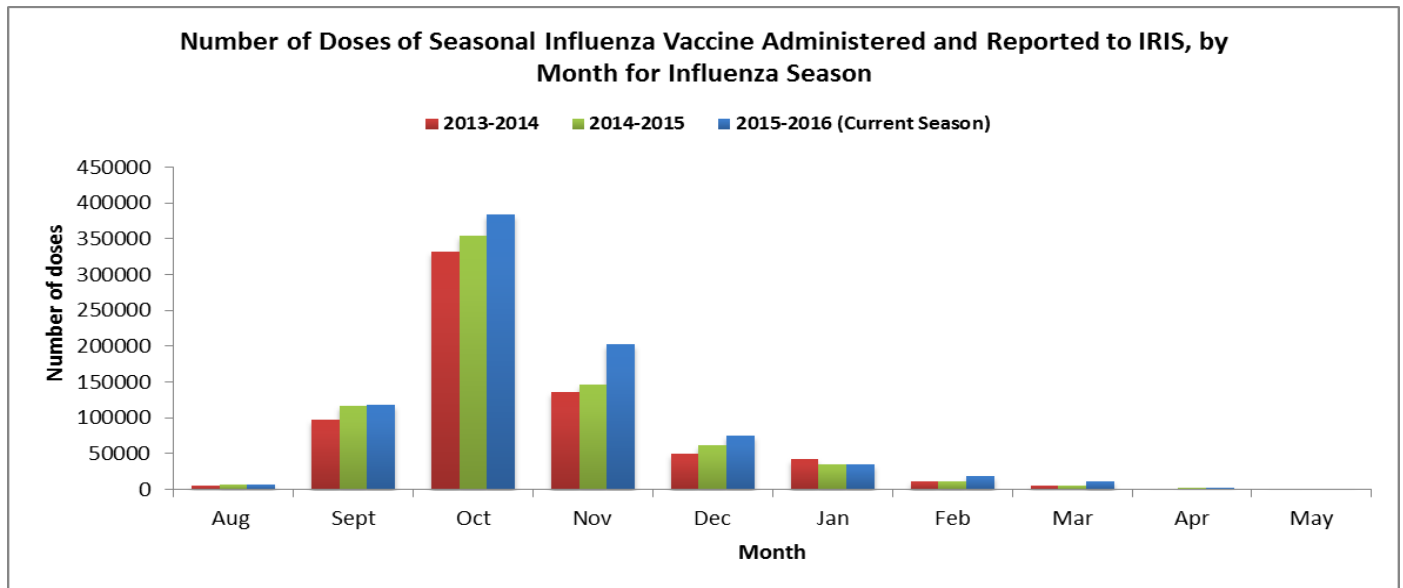
School surveillance program:

Sentinel schools that participate in IISN voluntarily track and report absence due to all illness (including non-influenza illnesses) and the total enrollment each week.



Seasonal influenza vaccination:

Seasonal influenza vaccination data in Iowa is based on doses reported to the Iowa Immunization Registry Information System (IRIS). IRIS is a confidential, computerized, population-based system that tracks immunization for children, adolescents and adults who are seen in a variety of public and private healthcare provider sites throughout the state of Iowa. For more information on the immunization data, contact Kim Tichy, IRIS coordinator at 515-281-4288 or kimberly.tichy@idph.iowa.gov.



Note: The data for the 2015-2016 season is only up to the current week and there is a lag between the vaccine administration date and the date reported to the IRIS. The current season's data will be adjusted as additional data is received.

Other resources:

Vaccine:

Influenza vaccine recommendation: <http://idph.iowa.gov/immtb/immunization/vaccine>

CDC vaccine information: www.cdc.gov/flu/faq/flu-vaccine-types.htm

Vaccine finder: <http://vaccinefinder.org/>

Neighboring states' influenza information:

Illinois: www.dph.illinois.gov/topics-services/diseases-and-conditions/influenza/surveillance

Minnesota: www.health.state.mn.us/divs/idepc/diseases/flu/stats/index.html

Missouri: <http://health.mo.gov/living/healthcondiseases/communicable/influenza/reports.php>

South Dakota: <http://doh.sd.gov/diseases/infectious/flu/>

Wisconsin: www.dhs.wisconsin.gov/influenza/index.htm