

# A d d e n d u m

Iowa Department of Transportation  
Office of Contracts

Date of Letting: October 18, 2016  
Date of Addendum: October 5, 2016

<b>B.O.</b>	<b>Proposal ID</b>	<b>Proposal Work Type</b>	<b>County</b>	<b>Project Number</b>	<b>Addendum</b>
011	57-1187-767-A	BRIDGE REPLACEMENT –CCS	LINN	BROS-1187(767)—8J-57	18OCT011A01

---

Notice: Only the bid proposal holders receive this addendum and responsibility for notifying any potential subcontractors or suppliers remains with the proposal holder.

---

Make the following changes to the PROPOSAL SCHEDULE OF PRICES:

Change Proposal Line No. 0220:

From: 2501-0201473 PILES, STEEL, HP 14 X 73 – 720.000 LF

To: 2501-0201253 PILES, STEEL, HP 12X53 – 720.000 LF

Change Proposal Line No. 0230:

From: 2501-5478073 CONCRETE ENCASEMENT OF STEEL H PILES, HP 14 X 73  
(P10L TYPE 3) – 213.000 LF

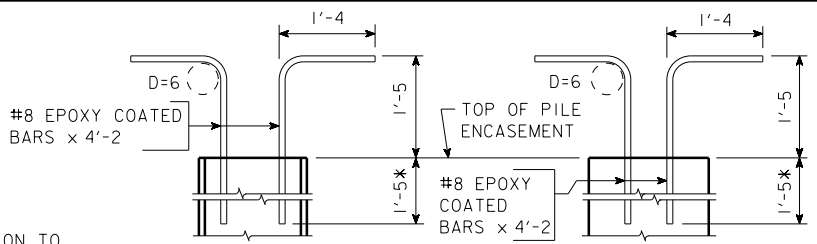
To: 2501-5478053 CONCRETE ENCASEMENT OF STEEL H PILES, HP 12 X 53  
(P10L TYPE 3) – 213.000 LF

If the above changes are not made, they will be made as shown here.

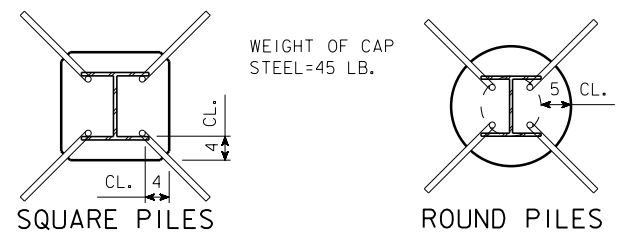
Make the following changes to the PLAN:

Replace SHEET V.09 with the attached SHEET V.09.

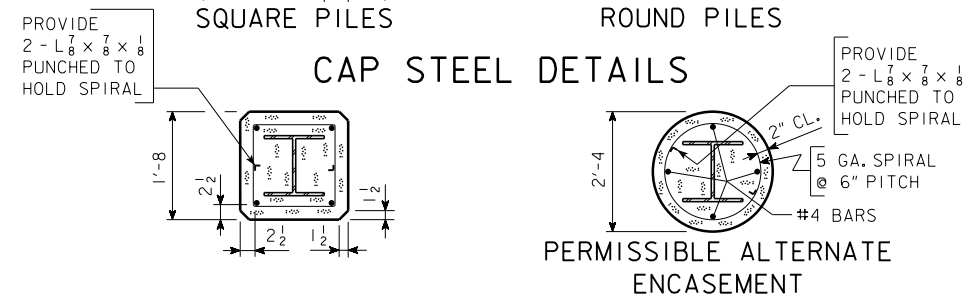
Note: General Notes regarding the drilled shaft have been eliminated.



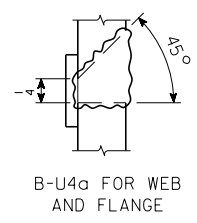
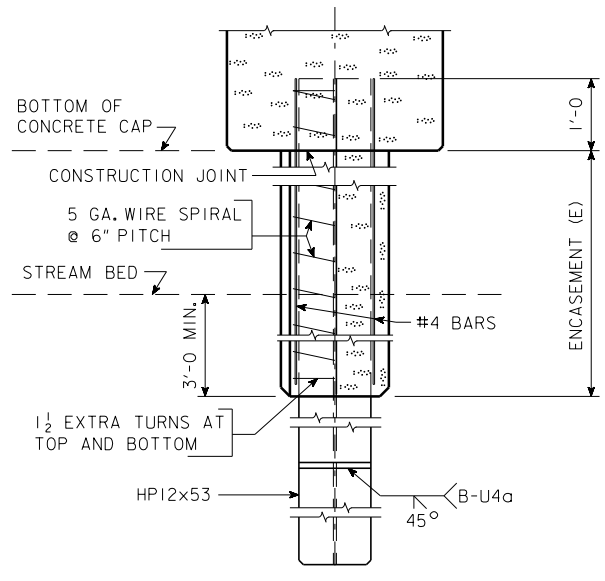
\*NOTE:  
THE CONTRACTOR HAS THE OPTION TO  
INSTALL THE CAP STEEL AS DOWELS  
FOLLOWING THE DOWEL SETTING  
PROCEDURE NOTES SHOWN ON THIS SHEET.



**CAP STEEL DETAILS**



**PERMISSIBLE ALTERNATE ENCASEMENT**



**TYPE 3 - CONCRETE ENCASED STEEL H PILE**

STEEL H PILE		HP12x53
SQUARE	CONCRETE (E=18')	CY 1.41
	CONCRETE 1' CHANGE	CY 0.078
	Δ REINFORCING (E=18')	LB 99
	Δ REINFORCING 1' CHANGE	LB 5.13
ROUND	CONCRETE (E=18')	CY 2.02
	CONCRETE 1' CHANGE	CY 0.112
	Δ REINFORCING (E=18')	LB 102
	Δ REINFORCING 1' CHANGE	LB 5.26

f'c = 4.0 KSI  
Δ INCLUDES WEIGHT OF PUNCHED L 7/8 x 7/8 x 1/8

**GENERAL NOTES:**

EXCEPT AS NOTED ELSEWHERE, MATERIAL AND CONSTRUCTION SHALL BE IN ACCORDANCE WITH STANDARD SPECIFICATIONS OF THE IOWA D.O.T. AND CURRENT SUPPLEMENTAL SPECIFICATIONS AND SPECIAL PROVISIONS APPLICABLE.  
CAP STEEL SHALL BE AS DETAILED ON THIS SHEET (D=PIN DIAMETER). COST OF CAP STEEL IS TO BE INCLUDED IN THE PRICE BID PER LINEAL FOOT FOR PILING.  
WIRE SPIRAL SHALL CONFORM TO ASTM A82.

**BIDDING NOTE:**

TYPE 3 PILING WILL BE BID PER LINEAL FOOT OF PILE AND LINEAL FOOT OF ENCASEMENT. PRICE BID FOR ENCASEMENT SHALL BE FULL PAYMENT FOR NECESSARY EXCAVATION AND FOR FURNISHING AND PLACING ALL MATERIAL.

**DOWEL SETTING PROCEDURE:**

- IF THE CAP STEEL IS INSTALLED BY DOWELS, THE STEEL SHALL BE SET AS DOWELS INTO THE PILES WITH POLYMER GROUT IN ACCORDANCE WITH ARTICLE 2301.03, E, OF THE STANDARD SPECIFICATIONS OR BY THE FOLLOWING PROCEDURE.
- DRILL HOLE APPROXIMATELY TWICE THE DIAMETER OF THE DOWEL BAR AND TO THE DEPTH INDICATED.
  - FILL HOLE WITH WATER AND ALLOW TO STAND LONG ENOUGH TO THOROUGHLY SATURATE THE SURROUNDING CONCRETE (ABOUT FOUR HOURS).
  - BLOW OUT ALL FREE WATER AND FILL HOLE 2/3 FULL OF MORTAR.
  - INSERT DOWEL BY DRIVING, IF NECESSARY, AND MANIPULATE OR TAP WITH A HAMMER TO CONSOLIDATE MORTAR AND SECURE COMPLETE EMBEDMENT.
  - ADD MORE MORTAR, IF NECESSARY, TO FILL HOLE.
  - MORTAR SHALL CONSIST OF EQUAL PARTS PORTLAND CEMENT AND SAND WITH JUST ENOUGH WATER TO MAKE A WORKABLE MIX.

DESIGN FOR 0° SKEW  
**80'-0 x 30'-6 CONTINUOUS CONC. SLAB BRIDGE W/7'-0 TRAILS**  
24'-6 END SPANS 31'-0 CENTER SPAN  
**LRFD TRESTLE PILE BENTS - PIOL**  
STA. 13+21.24 @ MCCLLOUD PLACE NE JULY, 2016  
**LINN COUNTY**  
IOWA DEPARTMENT OF TRANSPORTATION - HIGHWAY DIVISION  
DESIGN SHEET NO. \_\_\_\_\_ OF \_\_\_\_\_ FILE NO. \_\_\_\_\_ DESIGN NO. \_\_\_\_\_