

IOWA ACUTE DISEASE MONTHLY REPORT

April 2016

The Center for Acute Disease Epidemiology



Easter Lake, Des Moines, IA



TABLE OF CONTENTS

Introduction	1
Iowa County Boundaries and Population	2
March Case Counts	3
YTD Case Counts – Counties A-I	4
YTD Case Counts – Counties J-W	5
12 Month Case Counts – Counties A-F	6
12 Month Case Counts – Counties G-O	7
12 Month Case Counts – Counties P-W	8
Campylobacteriosis Summary	9
Cryptosporidiosis Summary	10
E. coli (STEC) Summary	11
Pertussis Summary	12
Salmonellosis Summary	13
Shigellosis Summary	14
Center for Acute Disease Epidemiology (CADE) Contacts	15

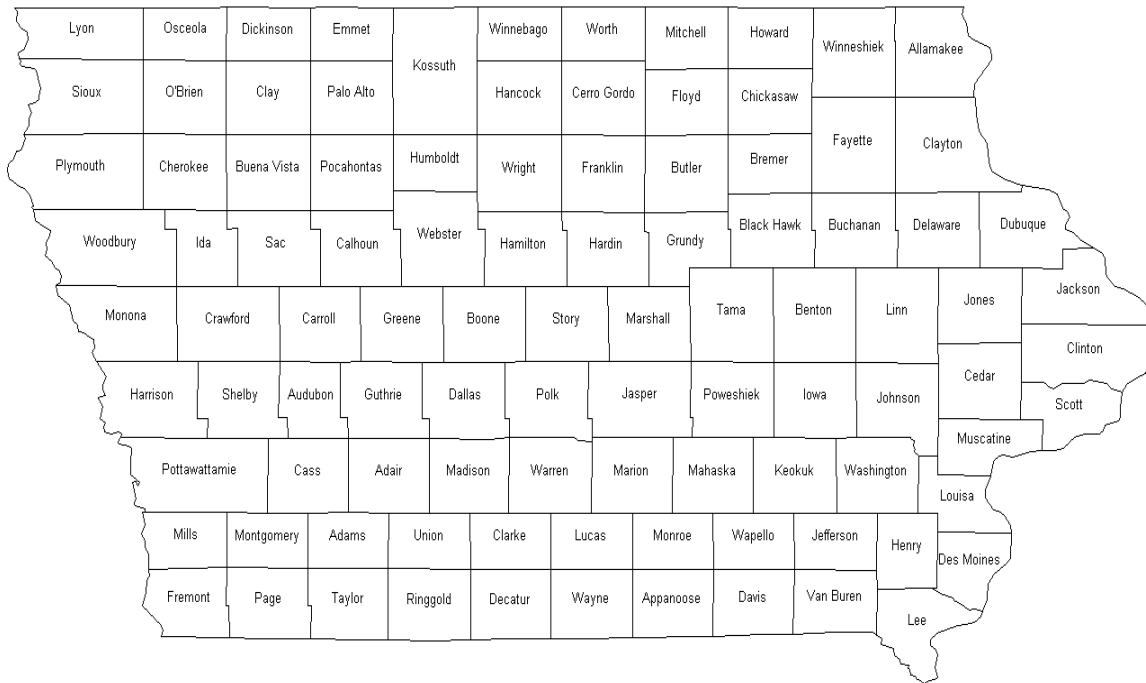
INTRODUCTION

The Center for Acute Disease Epidemiology (CADE) uses the most recent Council of State and Territorial Epidemiologists (CSTE) / Centers for Disease Control and Prevention (CDC) case definitions found on the [National Notifiable Disease Surveillance System \(NNDSS\)](#) page. These definitions are used to classify the case as confirmed, probable, suspect, not a case, or awaiting more information. **Only confirmed and probable cases meeting the CSTE/CDC case definitions are included in this report.**

Disease case counts were compiled from the Iowa Disease Surveillance System (IDSS). IDSS data updated frequently, therefore case counts may differ slightly for the same time period if updates are made after this report is generated.

Rates were calculated using the 2010 census population for the State of Iowa.

IOWA COUNTY BOUNDARIES



POPULATION	IOWA				3,046,355
	2010 CENSUS				
ADAIR	7,472	FLOYD	16,092	MONONA	9,121
ADAMS	3,894	FRANKLIN	10,548	MONROE	8,012
ALLAMAKEE	14,169	FREMONT	7,080	MONTGOMERY	10,424
APPANOOSE	12,692	GREENE	9,139	MUSCATINE	42,836
AUDUBON	5,873	GRUNDY	12,314	O'BRIEN	14,044
BENTON	25,699	GUTHRIE	10,687	OSCEOLA	6,211
BLACK HAWK	132,546	HAMILTON	15,312	PAGE	15,713
BOONE	26,364	HANCOCK	11,094	PALO ALTO	9,185
BREMER	24,624	HARDIN	17,441	PLYMOUTH	24,957
BUCHANAN	20,976	HARRISON	14,431	POCAHONTAS	7,154
BUENA VISTA	20,567	HENRY	20,222	POLK	451,677
BUTLER	15,021	HOWARD	9,526	POTTAWATTA	92,728
CALHOUN	9,926	HUMBOLDT	9,688	POWESHIEK	18,601
CARROLL	20,598	IDA	7,141	RINGGOLD	5,072
CASS	13,598	IOWA	16,330	SAC	10,071
CEDAR	18,393	JACKSON	19,587	SCOTT	170,385
CERRO GORDO	43,575	JASPER	36,641	SHELBY	11,961
CHEROKEE	11,945	JEFFERSON	16,810	SIOUX	34,547
CHICKASAW	12,321	JOHNSON	139,155	STORY	92,406
CLARKE	9,325	JONES	20,611	TAMA	17,576
CLAY	16,491	KEOKUK	10,329	TAYLOR	6,161
CLAYTON	17,773	KOSSUTH	15,321	UNION	12,583
CLINTON	48,420	LEE	35,682	VAN BUREN	7,436
CRAWFORD	17,434	LINN	216,111	WAPELLO	35,391
DALLAS	74,641	LOUISA	11,282	WARREN	47,336
DAVIS	8,791	LUCAS	8,746	WASHINGTON	22,015
DECATUR	8,136	LYON	11,712	WAYNE	6,402
DELAWARE	17,534	MADISON	15,448	WEBSTER	37,044
DES MOINES	40,480	MAHASKA	22,417	WINNEBAGO	10,554
DICKINSON	16,955	MARION	33,252	WINNESHIEK	20,994
DUBUQUE	95,697	MARSHALL	40,994	WOODBURY	102,130
EMMET	9,996	MILLS	14,896	WORTH	7,541
FAYETTE	20,502	MITCHELL	10,709	WRIGHT	12,972

Case Counts by County for the Month of March 2016

Confirmed and Probable

Counties with no reports of acute diseases may not be included in this table

	Campylobacter	Cryptosporidium	Dengue Fever	E. coli (STEC)	Giardia	Hepatitis B chronic	Lyme	Malaria	Mumps	Salmonella	Shigella	Typhoid Fever		Campylobacter	Cryptosporidium	Dengue Fever	E. coli (STEC)	Giardia	Hepatitis B chronic	Lyme	Malaria	Mumps	Salmonella	Shigella	Typhoid Fever
ADAIR	-	-	-	-	-	-	-	-	-	-	-	-	JACKSON	-	-	-	-	-	-	-	-	-	-	-	-
ADAMS	-	-	-	-	-	-	-	-	-	-	-	-	JASPER	<5	-	-	-	-	-	-	-	-	-	-	-
ALLAMAKEE	-	-	-	-	-	-	-	-	-	-	-	-	JEFFERSON	-	-	-	-	-	-	-	-	-	-	-	-
APPANOOSE	-	-	-	-	-	-	-	-	-	-	-	-	JOHNSON	<5	<5	-	-	-	-	-	<5	-	<5	<5	<5
BENTON	-	-	-	-	-	-	-	-	-	-	-	-	JONES	-	<5	-	-	-	-	-	-	-	-	<5	-
BLACK HAWK	<5	-	-	-	-	-	-	<5	24	-	-	-	KEOKUK	-	-	-	-	-	-	-	-	-	-	-	-
BOONE	-	-	-	-	-	-	-	-	-	-	-	-	KOSSUTH	-	-	-	-	-	-	-	-	-	-	-	-
BREMER	-	-	-	-	-	-	-	-	<5	-	<5	-	LEE	-	-	-	-	-	-	-	-	-	<5	-	-
BUCHANAN	-	-	-	-	-	-	-	-	-	-	-	-	LINN	<5	-	-	-	-	-	-	-	<5	-	-	-
BUENA VISTA	<5	-	-	-	-	-	-	-	-	-	-	-	LOUISA	-	-	-	-	-	-	-	-	<5	-	-	-
BUTLER	-	-	-	-	-	-	-	-	-	-	-	-	LUCAS	-	-	-	-	-	-	-	-	-	-	-	-
CALHOUN	-	-	-	-	-	-	-	-	-	-	-	-	LYON	-	-	-	-	-	-	-	-	-	<5	-	-
CARROLL	-	-	-	-	-	-	-	-	-	-	-	-	MADISON	-	-	-	-	-	-	-	-	-	-	-	-
CASS	-	-	-	-	-	-	-	-	-	-	-	-	MAHASKA	-	-	-	-	-	-	-	-	-	-	-	-
CEDAR	-	-	-	-	-	-	-	-	<5	-	-	-	MARION	-	-	-	-	-	-	-	-	-	-	-	-
CERRO GORDO	<5	-	-	-	-	-	-	-	-	-	-	-	MARSHALL	<5	-	-	-	-	-	-	-	-	-	-	-
CHEROKEE	<5	-	-	-	-	-	-	-	-	-	-	-	MILLS	-	-	-	-	-	-	-	-	-	-	-	-
CHICKASAW	<5	-	-	-	-	<5	-	-	-	-	-	-	MONONA	<5	-	-	-	-	-	-	-	-	-	-	-
CLARKE	-	-	-	-	-	-	-	-	-	-	-	-	MONROE	-	-	-	-	-	-	-	-	-	-	-	-
CLAY	-	-	-	-	-	-	-	-	-	-	<5	-	MUSCATINE	-	-	-	-	-	-	-	-	-	-	-	-
CLAYTON	-	-	-	-	-	-	-	-	-	<5	-	-	O'BRIEN	<5	-	-	-	-	-	-	-	-	-	-	-
CLINTON	-	-	-	-	-	-	-	-	-	-	-	-	OSCEOLA	-	-	-	-	-	-	-	-	-	-	-	-
CRAWFORD	-	-	-	-	-	-	-	-	-	-	-	-	PAGE	-	-	-	-	<5	-	-	-	-	-	-	-
DALLAS	<5	-	-	-	-	-	-	-	-	-	-	-	PALO ALTO	-	-	-	-	-	-	-	-	-	-	-	-
DAVIS	<5	-	-	-	-	-	-	-	-	-	-	-	PLYMOUTH	<5	-	-	-	-	-	-	-	<5	-	-	-
DECATUR	-	-	-	-	-	-	-	-	-	-	-	-	POLK	8	-	-	<5	<5	<5	-	-	<5	<5	<5	-
DELAWARE	<5	-	-	-	-	-	-	-	-	-	-	-	POTTAWATTAMIE	-	-	-	-	<5	-	-	-	-	<5	-	-
DES MOINES	-	-	-	-	-	-	-	-	-	-	-	-	POWESHIEK	-	-	-	-	-	-	-	-	-	-	-	-
DICKINSON	<5	-	-	-	-	-	-	-	-	-	-	-	RINGGOLD	-	-	-	-	-	-	-	-	-	-	-	-
DUBUQUE	<5	<5	-	<5	<5	<5	-	<5	<5	55	-	-	SAC	-	-	-	-	-	-	-	-	-	-	-	-
EMMET	-	-	-	-	-	-	-	-	-	<5	-	-	SCOTT	<5	-	-	<5	-	-	-	<5	-	-	11	-
FAYETTE	<5	-	-	-	-	-	-	-	<5	-	-	-	SHELBY	-	<5	-	-	-	-	-	-	-	<5	-	-
FLOYD	-	-	-	<5	-	-	-	-	-	-	-	-	SIoux	-	-	-	-	-	-	-	-	<5	<5	-	-
FRANKLIN	<5	-	-	-	-	-	-	-	-	-	-	-	STORY	-	<5	-	-	-	<5	-	-	<5	-	-	-
FREMONT	-	-	-	-	-	-	-	-	-	-	-	-	TAMA	<5	-	-	-	-	-	-	-	-	<5	-	-
GREENE	<5	-	-	-	-	-	-	-	-	-	-	-	TAYLOR	-	-	-	-	-	-	-	-	-	<5	-	-
GRUNDY	-	-	-	-	-	-	-	-	<5	-	-	-	VAN BUREN	<5	-	-	-	-	-	-	-	-	-	-	-
HAMILTON	<5	-	<5	-	-	-	-	-	-	-	-	-	WAPELLO	<5	-	-	-	-	-	-	-	-	-	-	-
HANCOCK	-	-	-	-	-	-	-	-	-	-	-	-	WARREN	<5	-	-	-	-	-	-	-	-	<5	-	-
HARDIN	<5	-	-	-	-	-	-	-	-	-	-	-	WASHINGTON	-	-	-	-	-	-	-	-	-	-	-	-
HARRISON	-	-	-	-	-	-	-	-	-	-	-	-	WAYNE	-	-	-	-	-	-	-	-	-	-	-	-
HENRY	-	-	-	-	-	-	-	-	-	-	-	-	WEBSTER	-	-	-	-	-	-	-	-	-	-	-	-
HOWARD	<5	-	-	-	-	-	-	-	-	<5	-	-	WINNEBAGO	-	-	-	-	-	-	-	-	-	-	-	-
HUMBOLDT	-	-	-	-	-	-	-	-	-	-	-	-	WINNESHIEK	<5	-	-	-	-	-	-	-	-	-	-	-
IDA	-	-	-	-	-	-	-	-	-	-	-	-	WOODBURY	<5	-	-	-	-	-	-	-	-	-	-	-
IOWA	-	-	-	-	-	-	-	-	-	-	-	-	WORTH	-	-	-	-	-	-	-	-	-	<5	-	-
													WRIGHT	-	-	-	-	-	-	-	-	-	-	-	-

YTD Case County by County A-I

January 1, 2016 – March 31, 2016

Confirmed and Probable Cases

	Campylobacter	Cryptosporidium	Dengue Fever	E. coli (STEC)	Giardia	Hepatitis A	Hepatitis B acute	Hepatitis B chronic	Legionnaires disease	Pontiac fever	Lyme	Malaria	Mumps	N. meningitidis	Pertussis	Q Fever Acute	Salmonella	Shigella	Typhoid Fever
ADAIR	1	-	-	-	-	-	-	-	-	-	-	-	-	-	-	-	-	-	-
ADAMS	-	-	-	-	-	-	-	-	-	-	-	-	-	-	-	-	2	-	-
ALLAMAKEE	-	-	-	-	-	-	-	-	-	-	1	-	-	-	1	-	-	-	-
APPANOOSE	-	-	-	-	-	-	-	-	-	-	-	-	-	-	-	-	-	-	-
AUDUBON	-	-	-	-	-	-	-	-	-	-	-	-	-	-	-	-	-	-	-
BENTON	2	1	-	-	-	-	-	-	-	-	-	-	1	-	-	-	-	-	-
BLACK HAWK	2	-	-	-	-	-	-	2	-	-	-	1	66	-	1	-	5	-	-
BOONE	-	-	-	-	-	-	-	-	-	-	-	-	4	-	-	-	-	-	-
BREMER	-	-	-	-	-	-	-	-	-	-	-	-	2	-	-	-	-	2	-
BUCHANAN	-	-	-	-	-	-	-	-	-	-	-	-	-	-	-	-	1	-	-
BUENA VISTA	3	-	-	-	-	-	-	1	-	-	-	-	-	-	-	-	1	-	-
BUTLER	1	-	-	-	-	-	-	-	-	-	-	-	-	-	-	-	-	-	-
CALHOUN	-	-	-	-	-	-	-	-	-	-	-	-	-	-	-	-	1	-	-
CARROLL	2	-	-	-	-	-	-	-	-	-	-	-	2	-	-	-	1	-	-
CASS	-	-	-	-	-	-	-	-	-	-	-	-	-	-	-	-	-	-	-
CEDAR	-	-	-	-	-	-	-	-	-	-	1	-	2	-	-	-	1	-	-
CERRO GORDO	1	-	-	-	1	-	-	-	-	-	-	-	3	-	-	-	-	-	-
CHEROKEE	1	-	-	-	-	-	-	-	-	-	-	-	-	-	-	-	-	-	-
CHICKASAW	1	1	-	-	-	-	-	-	-	-	1	-	-	-	-	-	-	-	-
CLARKE	-	1	-	-	-	-	-	-	-	-	-	-	-	-	-	-	1	-	-
CLAY	1	-	-	-	-	-	-	-	-	-	-	-	-	-	-	-	1	1	-
CLAYTON	-	-	-	-	-	-	-	-	-	-	-	-	4	-	-	-	1	-	-
CLINTON	1	-	-	-	-	-	-	-	-	-	-	-	1	-	-	-	1	-	-
CRAWFORD	-	-	-	-	-	-	-	-	-	-	-	-	-	-	-	-	-	-	-
DALLAS	7	1	-	-	1	-	1	-	-	-	-	-	-	-	-	-	2	-	-
DAVIS	3	-	-	-	-	-	-	-	-	-	-	-	-	-	-	-	-	-	-
DECATUR	-	-	-	-	-	-	1	-	-	-	-	-	1	-	-	-	-	-	-
DELAWARE	2	1	-	-	1	-	-	-	-	-	-	-	2	-	-	-	1	-	-
DES MOINES	-	1	-	-	-	-	-	-	-	-	-	-	-	-	-	-	1	-	-
DICKINSON	1	-	-	-	-	-	1	-	-	-	-	-	1	-	-	-	-	1	-
DUBUQUE	14	6	-	3	10	-	1	-	-	2	-	1	-	-	-	-	7	115	-
EMMET	-	-	-	-	-	-	-	-	-	-	-	-	-	-	-	-	-	1	-
FAYETTE	2	1	-	-	-	-	-	-	-	-	-	-	3	-	-	-	-	-	-
FLOYD	1	-	-	1	-	-	-	-	-	-	-	-	1	-	-	-	-	-	-
FRANKLIN	3	-	-	2	-	-	-	-	-	-	-	-	-	-	-	-	-	-	-
FREMONT	-	-	-	-	-	-	-	-	-	-	-	-	-	-	-	-	1	-	-
GREENE	2	-	-	-	-	-	-	-	-	-	-	-	-	-	-	-	-	-	-
GRUNDY	-	-	-	1	-	-	-	-	-	-	-	-	2	-	-	-	-	-	-
GUTHRIE	-	-	-	-	-	-	-	-	-	-	-	-	-	-	-	-	-	-	-
HAMILTON	1	-	1	-	-	-	-	-	-	-	-	-	-	-	-	-	-	-	-
HANCOCK	-	-	-	-	-	-	-	-	-	-	-	-	-	-	-	-	-	-	-
HARDIN	2	1	-	-	-	-	-	-	-	-	-	-	1	-	-	-	-	-	-
HARRISON	3	-	-	-	-	-	-	-	-	-	-	-	-	1	-	-	2	-	-
HENRY	-	-	-	-	-	-	-	-	-	-	-	-	-	-	-	-	1	-	-
HOWARD	3	-	-	-	-	-	-	-	-	-	-	-	-	-	-	-	1	-	-
HUMBOLDT	-	-	-	-	-	-	-	-	-	-	-	-	-	-	-	-	-	1	-
IDA	-	-	-	-	-	-	-	-	-	-	-	-	-	-	-	-	-	-	-
IOWA	-	-	-	-	1	-	-	-	-	-	-	-	1	-	-	-	-	-	-

YTD Case County by County J-W

January 1, 2016 – March 31, 2016

Confirmed and Probable Cases

	Campylobacter	Cryptosporidium	Dengue Fever	E. coli (STEC)	Giardia	Hepatitis A	Hepatitis B acute	Hepatitis B chronic	Legionnaires disease	Pontiac fever	Lyme	Malaria	Mumps	N. meningitidis	Pertussis	Q Fever Acute	Salmonella	Shigella	Typhoid Fever
JACKSON	3	-	-	-	-	-	-	-	-	-	-	-	-	-	-	-	-	4	-
JASPER	2	1	-	-	-	-	-	-	-	-	-	-	-	-	-	-	1	-	-
JEFFERSON	-	1	-	-	-	-	-	-	-	-	-	-	-	-	-	-	-	-	-
JOHNSON	4	1	-	1	1	-	-	1	-	-	1	-	58	-	-	-	8	-	1
JONES	3	3	-	-	-	-	-	-	-	-	-	-	-	-	-	-	-	1	-
KEOKUK	-	-	-	-	-	-	-	-	-	-	-	-	-	-	-	-	1	-	-
KOSSUTH	-	-	-	-	-	-	-	-	-	-	-	-	-	-	-	-	-	-	-
LEE	-	-	-	-	-	-	-	-	-	-	-	-	-	-	1	-	1	-	-
LINN	8	3	-	2	1	1	-	8	-	-	1	-	11	-	-	-	6	1	-
LOUISA	2	-	-	-	-	-	-	-	-	-	-	-	-	-	-	-	-	-	-
LUCAS	-	-	-	-	-	-	-	-	-	-	-	-	1	-	-	-	-	-	-
LYON	2	5	-	-	-	-	-	-	-	-	-	-	-	-	-	-	2	-	-
MADISON	-	-	-	-	-	-	-	-	-	-	-	-	3	-	-	-	-	-	-
MAHASKA	-	-	-	-	-	-	1	-	-	-	-	-	-	-	-	1	1	-	-
MARION	-	1	-	-	-	-	-	-	-	-	-	-	2	-	-	-	1	-	-
MARSHALL	4	-	-	-	-	-	-	-	-	-	-	-	-	-	-	-	-	1	-
MILLS	2	-	-	-	-	-	-	-	-	-	-	-	-	-	-	-	-	-	-
MITCHELL	1	-	-	-	-	-	-	-	-	-	-	-	-	-	-	-	-	-	-
MONONA	3	-	-	-	-	-	-	-	-	-	-	-	-	-	-	-	-	-	-
MONROE	-	1	-	-	-	-	-	-	-	-	-	-	-	-	-	-	-	-	-
MONTGOMERY	-	-	-	1	-	-	-	-	-	-	-	-	-	-	-	-	-	-	-
MUSCATINE	-	2	-	-	-	-	-	-	-	-	2	-	8	-	1	-	6	2	-
O'BRIEN	1	-	-	-	1	-	-	-	-	-	-	-	-	-	-	-	1	-	-
OSCEOLA	-	-	-	-	-	-	-	-	-	-	-	-	1	-	-	-	-	-	-
PAGE	-	-	-	-	1	-	-	-	-	-	-	-	-	-	-	-	-	-	-
PALO ALTO	1	-	-	-	-	-	-	-	-	-	-	-	-	-	-	-	-	-	-
PLYMOUTH	1	-	-	-	-	-	-	-	-	-	-	-	5	-	-	-	1	-	-
POCAHONTAS	-	-	-	-	-	-	-	-	-	-	-	-	-	-	-	-	2	-	-
POLK	23	2	-	3	6	-	-	13	-	-	1	7	-	6	-	11	14	-	-
POTTAWATTAMIE	4	1	-	1	-	-	1	1	1	-	-	-	-	-	1	-	2	-	-
POWESHIEK	2	-	-	-	-	-	-	-	-	-	-	-	-	-	-	-	1	-	-
RINGGOLD	-	1	-	-	-	-	-	-	-	-	-	-	-	-	3	-	-	-	-
SAC	2	-	-	-	-	-	-	-	-	-	-	-	-	-	-	-	-	-	-
SCOTT	4	2	-	1	1	-	-	2	-	-	1	6	-	-	-	-	1	14	-
SHELBY	3	1	-	-	-	-	-	-	-	-	-	-	-	-	-	-	1	-	-
SIOUX	3	3	-	-	3	-	-	-	1	-	-	1	-	-	-	-	4	-	-
STORY	2	1	-	-	-	1	-	3	-	-	-	16	-	-	-	-	2	-	-
TAMA	3	-	-	-	-	-	-	-	-	-	-	1	-	3	-	-	1	-	-
TAYLOR	-	-	-	-	-	-	-	-	-	-	-	-	-	-	-	-	1	-	-
UNION	-	-	-	-	-	-	-	-	-	-	-	-	-	-	-	-	-	-	-
VAN BUREN	2	-	-	-	-	-	-	-	-	-	-	-	-	-	-	-	-	-	-
WAPELLO	5	2	-	-	-	-	-	-	-	-	-	-	-	-	-	-	-	-	-
WARREN	3	-	-	1	-	-	-	-	-	-	-	13	-	-	-	-	3	-	-
WASHINGTON	1	1	-	-	-	-	-	-	-	1	-	1	-	-	-	-	-	-	-
WAYNE	-	-	-	-	-	-	-	-	-	-	-	-	-	-	-	-	-	-	-
WEBSTER	2	-	-	-	1	-	-	-	-	-	-	-	-	-	-	-	-	-	-
WINNEBAGO	-	-	-	-	-	-	-	-	-	-	-	-	-	-	-	-	-	-	-
WINNESHIEK	3	-	-	-	-	-	-	-	-	-	-	4	-	-	-	-	-	-	-
WOODBURY	5	-	-	1	2	-	-	1	-	-	-	1	-	1	-	-	1	6	-
WORTH	-	1	-	-	-	-	-	-	-	-	-	-	-	-	-	-	1	-	-
WRIGHT	-	-	-	-	-	-	-	-	-	-	-	-	-	-	-	-	-	-	-

12 Month Case County by County A-F

April 1, 2015 – March 31, 2016

Confirmed and Probable Cases

	Anaplasmosis phagocytophilum	Infant Botulism	Bruceellosis not temporally/spatially clustered	Campylobacter	Cryptosporidium	Cyclospora	Dengue	E-COLI SHGT	Ehrlichioses chaffeensis	Ehrlichioses/Anaplasmosis undetermined	HUS	Giardia	Hepatitis A	Hepatitis B acute	Hepatitis B chronic	Haemophilus influenzae Type B	Legionnaires disease	Pontiac fever	Listeria	Lyme	Malaria	Mumps	Neisseria meningitidis	Pertussis	Q Fever Acute	Rocky Mountain Spotted Fever	Salmonella	Shigella	Typhoid Fever	West Nile Virus
ADAIR	-	-	-	3	-	-	-	-	-	-	-	-	-	-	-	-	-	-	-	-	-	-	1	-	-	-	2	-	-	-
ADAMS	-	-	-	1	-	-	-	1	-	-	-	-	-	-	1	-	-	-	-	-	-	-	-	-	-	-	2	-	-	1
ALLAMAKEY	-	-	-	4	3	-	-	1	-	-	-	1	-	-	-	-	-	-	-	-	6	-	-	1	-	-	2	-	-	-
APPANOOSE	-	-	-	4	2	-	-	-	-	-	-	-	1	-	-	-	-	-	-	-	-	-	-	-	-	-	4	1	-	-
AUDUBON	-	-	-	-	-	-	-	2	-	-	-	-	-	-	-	-	-	-	-	-	-	-	-	-	-	-	1	1	-	-
BENTON	-	-	-	9	3	-	-	2	-	1	-	1	-	-	1	-	-	-	-	-	12	-	1	-	-	-	7	9	-	-
BLACK HAWK	-	1	-	9	3	-	-	4	-	-	-	6	1	-	22	-	1	-	-	8	1	88	1	5	-	-	22	46	-	-
BOONE	-	-	-	5	1	-	-	-	-	-	-	-	-	-	-	-	-	-	-	4	-	4	-	-	-	-	4	1	-	-
BREMER	-	-	-	2	1	-	-	-	-	-	-	2	-	-	-	-	1	-	-	-	-	3	-	-	-	-	4	4	-	-
BUCHANAN	-	-	-	5	5	-	1	1	-	-	-	-	-	-	1	-	1	-	-	3	-	-	-	-	-	-	6	1	-	-
BUENA VISTA	-	-	-	10	2	-	-	-	-	-	-	-	-	-	3	-	-	-	1	-	-	-	-	-	-	-	11	3	-	-
BUTLER	-	-	-	4	4	-	-	3	-	-	-	-	-	-	-	-	-	-	-	1	-	1	-	-	-	-	5	3	-	-
CALHOUN	-	-	-	3	2	-	-	2	-	-	-	1	-	-	-	-	-	-	-	-	-	-	-	-	-	-	1	-	-	-
CARROLL	-	-	-	6	3	-	-	1	-	-	-	1	-	-	1	-	-	-	-	-	-	2	-	-	-	-	7	1	-	-
CASS	-	-	-	4	-	-	-	1	-	-	-	-	-	-	-	-	-	-	-	-	-	-	-	-	-	3	-	-	-	-
CEDAR	-	-	-	5	1	-	-	-	-	-	-	-	-	-	-	-	-	-	-	2	-	5	-	1	-	-	5	1	-	-
CERRO GORDO	-	-	-	17	2	-	-	-	-	-	-	1	-	-	1	-	-	-	-	1	-	5	-	2	-	-	4	-	-	-
CHEROKEE	-	-	-	3	-	-	-	-	-	-	-	-	-	-	-	-	-	-	-	-	-	-	-	-	-	-	2	-	-	-
CHICKASAW	-	-	-	3	1	-	-	-	-	-	-	1	-	-	-	-	-	-	-	1	-	-	-	-	-	-	2	-	-	-
CLARKE	-	-	-	5	2	-	-	-	-	-	-	2	-	-	2	-	-	-	-	-	-	-	-	-	-	-	1	-	-	1
CLAY	-	-	-	7	2	-	-	-	-	-	-	1	-	-	-	-	-	-	-	-	-	-	-	-	-	-	2	1	-	-
CLAYTON	1	-	-	12	3	-	-	2	1	-	-	1	-	-	-	-	-	-	-	14	-	4	-	2	-	-	2	3	-	-
CLINTON	-	-	-	3	-	-	-	2	-	-	-	1	-	1	3	-	1	-	-	5	-	2	-	-	-	-	13	-	-	-
CRAWFORD	-	-	-	3	-	-	-	1	-	-	-	2	1	-	-	-	-	-	-	-	-	-	-	-	-	-	1	-	-	-
DALLAS	-	-	-	12	15	-	-	4	-	-	-	6	1	-	7	-	-	-	-	4	-	1	-	2	-	-	19	12	1	1
DAVIS	-	-	-	7	1	-	-	-	1	-	-	-	-	-	-	-	-	-	-	-	-	-	-	-	-	-	-	-	-	-
DECATUR	-	-	-	1	-	-	-	-	-	-	-	1	-	-	1	-	-	-	-	1	-	1	-	1	-	-	1	-	-	-
DELAWARE	-	-	-	14	5	-	-	1	-	-	-	2	-	-	1	-	-	-	-	9	-	2	-	-	-	-	7	-	-	-
DES MOINES	-	-	-	10	8	-	-	-	-	-	-	2	-	-	-	-	-	-	-	2	-	-	-	-	-	-	8	4	-	-
DICKINSON	-	-	-	1	6	-	-	-	-	-	-	3	-	-	1	-	-	-	-	1	-	1	-	-	-	-	5	1	-	-
DUBUQUE	-	-	-	54	45	-	-	17	-	-	-	21	1	-	4	-	1	-	-	26	-	3	-	-	-	-	28	185	-	-
EMMET	-	-	-	3	1	-	-	-	-	-	-	-	-	-	-	-	-	-	-	-	-	-	-	-	-	-	1	1	-	-
FAYETTE	-	-	-	13	3	-	-	2	-	-	-	-	-	-	-	-	-	-	-	2	-	3	-	2	-	-	-	-	-	-
FLOYD	-	-	-	8	-	1	-	2	-	-	-	-	-	-	-	-	-	-	-	-	-	1	-	-	-	-	3	1	-	-
FRANKLIN	-	-	-	6	-	-	-	3	-	-	-	-	-	-	-	-	-	-	-	-	-	-	-	-	-	-	1	-	-	-
FREMONT	-	-	-	3	-	-	-	-	-	-	-	-	-	-	-	-	-	-	-	-	-	-	-	-	-	-	1	-	-	-

12 Month Case County by County G-O

April 1, 2015 – March 31, 2016

Confirmed and Probable Cases

	Anaplasmosis phagocytophilum	Infant Botulism	Brucellosis not temporally/spatially clustered	Campylobacter	Cryptosporidium	Cyclospora	Dengue	E-COLI SHGT	Ehrlichioses chaffeensis	Ehrlichioses/Anaplasmosis undetermined	HUS	Giardia	Hepatitis A	Hepatitis B acute	Hepatitis B chronic	Haemophilus influenzae Type B	Legionaires disease	Pontiac fever	Listeria	Lyme	Malaria	Mumps	Neisseria meningitidis	Pertussis	Q Fever Acute	Rocky Mountain Spotted Fever	Salmonella	Shigella	Typhoid Fever	West Nile Virus
GREENE	-	-	-	4	-	-	-	-	-	-	-	-	-	-	-	-	-	-	-	-	-	-	-	-	-	-	-	-	-	
GRUNDY	-	-	-	2	-	-	-	3	-	-	-	-	1	-	-	-	-	-	-	-	-	3	-	-	-	-	1	3	-	-
GUTHRIE	-	-	-	5	1	-	-	1	-	-	-	-	-	-	-	-	-	-	-	-	-	-	-	-	-	-	1	-	-	-
HAMILTON	-	-	-	5	-	-	1	-	-	-	-	-	-	-	-	-	-	-	-	-	-	-	-	-	-	-	2	-	-	-
HANCOCK	-	-	-	6	1	-	-	-	-	-	-	-	-	-	1	-	-	-	-	-	-	-	-	-	-	-	1	-	-	1
HARDIN	-	-	-	8	1	-	-	1	-	-	-	2	-	-	-	1	-	-	-	-	-	1	-	1	-	-	2	-	-	-
HARRISON	-	-	-	3	1	-	-	3	-	-	-	-	-	-	-	-	-	-	-	-	-	-	1	2	-	-	5	1	-	-
HENRY	-	-	-	1	1	-	-	-	-	-	-	2	-	-	2	-	-	-	-	-	1	-	-	-	-	-	2	1	-	-
HOWARD	-	-	-	7	-	-	-	-	-	-	-	-	-	-	-	-	-	-	-	1	-	-	1	-	-	-	2	-	-	-
HUMBOLDT	-	-	-	1	3	-	-	2	-	-	-	-	-	-	-	-	-	-	-	-	-	-	-	-	-	-	-	1	-	-
IDA	-	-	-	-	1	-	-	-	-	-	-	-	-	-	-	-	-	-	-	1	-	-	-	-	-	-	1	-	-	-
IOWA	-	-	-	5	3	-	-	3	-	-	-	2	-	-	-	-	-	-	-	-	-	2	-	3	-	-	3	1	-	-
JACKSON	-	-	-	17	14	-	-	7	-	-	-	-	-	-	-	-	-	-	-	8	-	-	-	-	-	-	1	4	-	-
JASPER	-	-	-	14	10	-	-	1	-	-	-	2	1	-	1	-	-	-	-	-	-	-	-	-	-	-	6	-	-	-
JEFFERSON	1	-	-	3	7	-	-	-	-	-	-	1	-	1	-	-	-	-	-	1	-	-	-	9	-	-	2	-	-	-
JOHNSON	-	-	-	16	6	-	-	11	-	1	-	8	-	1	4	-	2	1	-	65	-	363	-	11	-	-	40	31	2	-
JONES	-	-	-	13	6	-	-	2	-	-	1	3	-	-	-	-	-	-	3	-	-	-	-	-	-	-	5	10	-	-
KEOKUK	-	-	-	1	7	-	-	2	-	-	1	1	-	-	-	-	-	-	1	-	-	-	-	-	-	-	5	1	-	-
KOSSUTH	-	-	-	5	1	-	-	1	-	-	-	1	-	-	-	-	-	-	-	-	-	-	-	-	-	-	1	-	-	-
LEE	-	-	-	4	-	-	-	2	1	-	1	-	-	-	-	-	-	-	-	1	-	1	-	1	-	1	3	-	-	1
LINN	-	-	-	51	22	-	-	9	-	-	-	9	3	1	23	-	1	1	-	39	3	28	-	1	-	-	33	276	1	-
LOUISA	-	-	-	3	-	-	-	-	-	-	-	-	-	-	3	-	-	-	-	1	-	1	-	1	-	-	1	-	-	1
LUCAS	-	-	-	3	-	-	-	1	-	-	-	-	-	-	-	-	-	-	-	-	-	1	-	3	-	-	1	-	-	-
LYON	-	-	-	12	8	-	-	4	-	-	-	6	-	-	-	-	-	-	-	-	-	-	-	-	-	-	8	1	-	1
MADISON	-	-	-	4	-	-	-	2	-	-	-	1	-	-	-	-	-	-	-	1	-	3	-	-	-	-	-	-	-	-
MAHASKA	-	-	-	3	-	-	-	1	-	-	-	-	-	1	-	-	-	-	-	4	-	-	-	-	1	-	8	-	-	2
MARION	-	-	-	9	2	-	-	-	1	-	-	1	-	-	1	1	-	-	-	5	1	2	-	-	-	-	5	-	-	-
MARSHALL	-	-	-	9	-	-	-	3	-	-	-	2	-	-	8	-	1	-	-	5	-	-	-	14	-	-	9	1	-	-
MILLS	-	-	-	6	2	-	-	-	1	-	-	1	-	-	1	-	-	-	-	-	-	-	-	-	-	-	1	3	-	-
MITCHELL	-	-	-	4	1	-	-	-	-	-	-	-	-	-	-	-	-	-	-	-	-	-	-	-	-	-	-	-	-	-
MONONA	-	-	-	4	9	-	-	-	-	-	-	3	-	1	-	-	-	-	-	-	-	-	-	2	-	-	3	-	-	-
MONROE	-	-	-	7	2	-	-	-	1	-	-	1	-	-	-	-	-	-	-	1	-	-	-	-	-	-	1	-	-	-
MONTGOMERY	-	-	-	2	-	-	-	1	-	-	-	-	-	-	-	-	-	-	-	2	-	-	-	-	-	-	-	1	-	-
MUSCATINE	-	-	-	3	5	-	-	3	-	-	-	7	-	-	-	-	-	-	-	-	-	12	-	1	-	-	11	4	-	-
O'BRIEN	-	-	-	5	1	-	-	-	-	-	-	1	-	-	-	-	-	-	-	-	-	-	-	-	-	-	6	-	-	-
OSCEOLA	-	-	-	3	-	-	-	-	-	-	-	-	-	-	-	-	-	-	-	-	-	1	-	-	-	-	-	-	-	-

12 Month Case County by County P-W

April 1, 2015 – March 31, 2016

Confirmed and Probable Cases

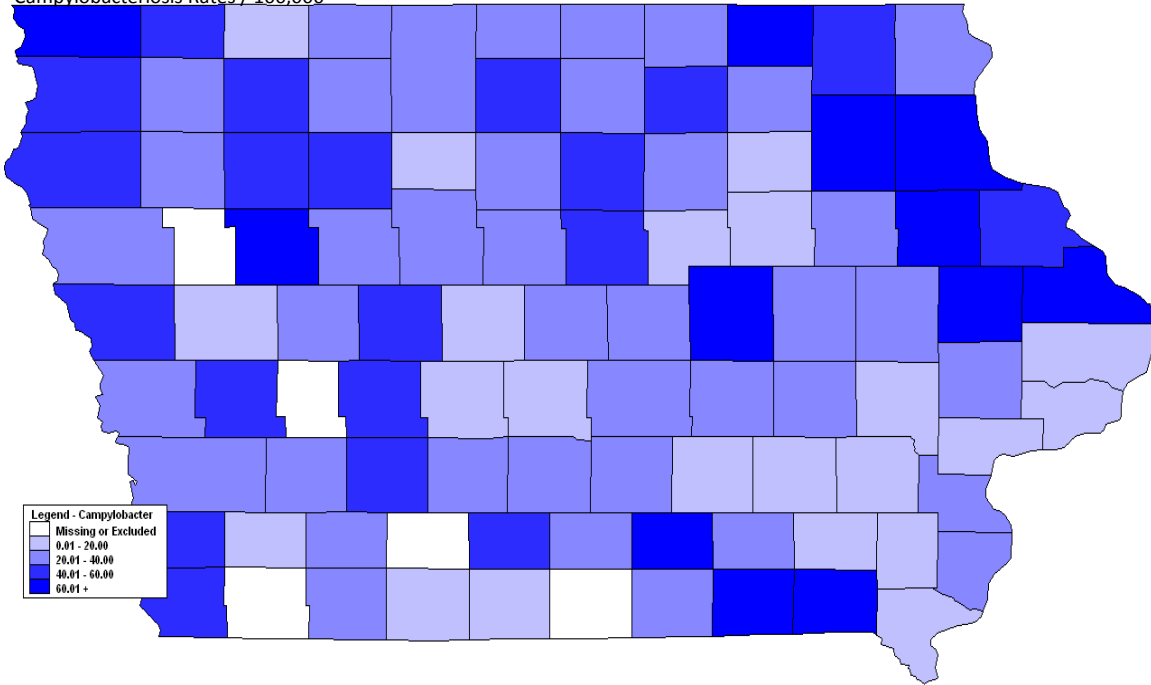
	Anaplasmosis phagocytophilum	Infant Botulism	Brucellosis not temporally/spatially clustered	Campylobacter	Cryptosporidium	Cyclospora	Dengue	E-COLI SHGT	Ehrlichioses chaffeensis	Ehrlichioses/Anaplasmosis undetermined	HUS	Giardia	Hepatitis A	Hepatitis B acute	Hepatitis B chronic	Haemophilus influenzae Type B	Legionnaires disease	Pontiac fever	Listeria	Lyme	Malaria	Mumps	Neisseria meningitidis	Pertussis	Q Fever Acute	Rocky Mountain Spotted Fever	Salmonella	Shigella	Typhoid Fever	West Nile Virus
PAGE	-	-	-	-	-	-	-	1	-	-	-	1	-	-	-	-	-	-	-	1	-	-	-	-	-	1	2	-	-	-
PALO ALTO	-	-	-	3	-	-	-	-	-	-	-	-	-	-	-	-	-	-	-	-	-	-	-	-	-	-	-	-	-	-
PLYMOUTH	-	-	-	10	6	-	-	2	-	-	-	2	-	-	-	-	-	-	-	-	-	6	-	-	-	-	7	11	-	1
POCAHONTAS	-	-	-	3	-	-	-	-	-	-	-	-	-	-	-	-	-	-	-	-	-	-	-	-	-	-	2	-	-	-
POLK	-	-	1	89	20	1	1	12	-	-	-	24	3	4	71	-	5	1	2	16	9	10	-	14	-	1	59	87	-	1
POTTAWATTAMIE	-	-	-	21	11	1	-	5	1	-	-	5	-	1	4	-	2	1	-	1	-	-	-	2	-	-	15	2	-	-
POWESHIEK	-	-	-	6	-	-	-	-	-	-	-	-	-	-	-	-	-	-	-	-	-	-	-	-	-	-	3	-	-	-
RINGGOLD	-	-	-	1	2	-	-	-	-	-	-	-	-	-	-	-	-	-	-	-	-	-	-	5	-	-	1	-	-	1
SAC	-	-	-	10	1	-	-	-	-	-	-	-	-	-	-	-	-	-	-	-	-	1	-	-	-	-	7	-	-	-
SCOTT	-	-	-	24	5	1	-	4	-	-	-	5	2	1	12	-	5	-	-	14	1	9	-	25	-	2	14	64	1	-
SHELBY	-	-	-	7	3	-	-	2	-	-	-	1	-	-	-	-	-	-	-	-	-	-	-	-	-	-	1	3	-	-
SIOUX	-	-	-	17	23	-	1	6	-	-	2	9	-	-	2	-	-	-	1	-	3	-	2	-	-	-	24	4	-	-
STORY	-	-	-	24	8	-	-	3	-	-	-	2	1	-	11	-	-	-	-	3	2	20	-	1	-	-	12	4	-	-
TAMA	-	-	-	13	1	-	-	-	-	-	-	-	-	-	1	-	-	-	-	-	-	1	-	22	-	-	5	-	-	1
TAYLOR	-	-	-	2	-	-	-	-	-	-	-	-	-	-	-	-	-	-	-	-	-	-	-	-	-	-	1	-	-	-
UNION	-	-	-	-	-	-	-	-	-	-	-	-	-	-	-	-	-	-	-	-	-	-	-	-	-	-	-	-	-	-
VAN BUREN	-	-	-	6	6	-	-	2	-	-	-	-	-	-	1	-	1	-	-	-	-	-	-	-	-	-	4	-	-	-
WAPELLO	-	-	-	14	16	-	-	2	-	-	-	2	-	-	2	-	1	-	-	3	-	1	-	-	-	1	7	1	-	-
WARREN	-	-	-	14	2	-	-	2	-	-	-	1	-	1	1	-	1	-	-	1	-	18	-	1	-	-	10	3	-	1
WASHINGTON	-	-	-	4	1	-	-	2	-	-	-	-	-	-	-	-	-	-	-	5	-	4	-	-	-	-	4	1	-	-
WAYNE	-	-	-	-	2	-	-	-	-	-	-	-	-	-	-	-	-	-	-	-	-	-	-	-	-	-	2	-	-	-
WEBSTER	-	-	-	12	2	-	-	2	-	-	-	2	-	-	-	-	-	-	-	1	-	-	-	-	-	-	4	1	-	-
WINNEBAGO	-	-	-	3	-	-	-	-	-	-	-	-	-	-	-	-	-	-	-	2	-	-	-	-	-	-	1	-	-	-
WINNESHIEK	1	-	-	11	1	-	-	5	-	-	-	1	-	-	-	-	-	-	-	5	-	4	-	1	-	-	3	-	-	-
WOODBURY	-	-	-	24	14	-	-	6	-	-	-	8	-	-	2	-	1	-	-	-	1	-	1	-	1	-	27	16	-	-
WORTH	-	-	-	3	1	-	-	-	-	-	-	-	-	-	-	-	-	-	-	-	-	-	-	-	-	-	2	-	-	-
WRIGHT	-	-	-	3	2	-	-	1	-	-	-	1	-	-	1	-	-	-	-	-	-	-	-	-	-	-	1	-	-	-

Campylobacteriosis Summary

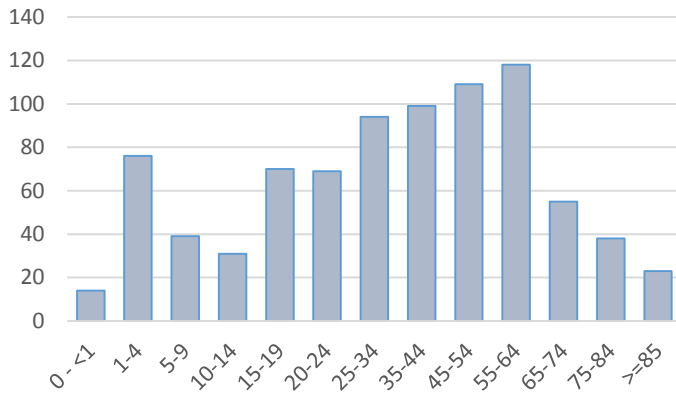
April 1, 2015 – March 31, 2016

Confirmed and Probable Cases

Campylobacteriosis Rates / 100,000



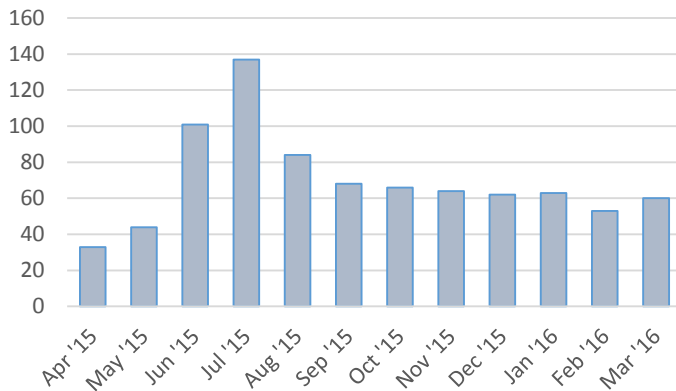
12 MONTH CAMPYLOBACTERIOSIS CASES BY AGE



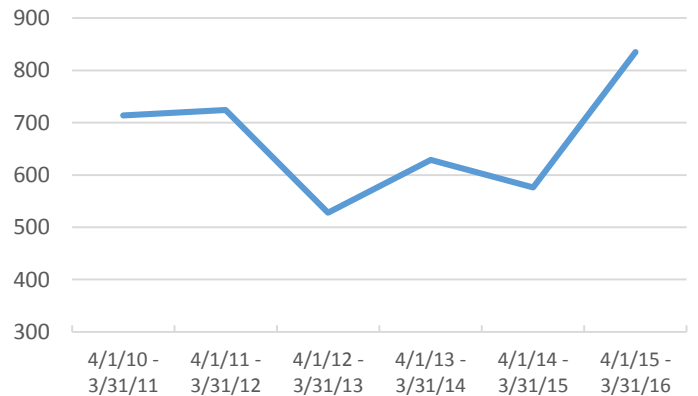
Summary

Number of Cases	835		
Incidence rate (per 100,000 population)	27.4		
Change from 5-year average incidence (%)	+31.7		
Age (in years)			
Mean	38		
Median	38		
Min-Max	0-102		
Gender			
	Number	Percent	Rate
Female	386	46.2	12.7
Male	435	52.1	14.3
Unknown	14	1.7	

12 MONTH CAMPYLOBACTERIOSIS REPORTS BY MONTH



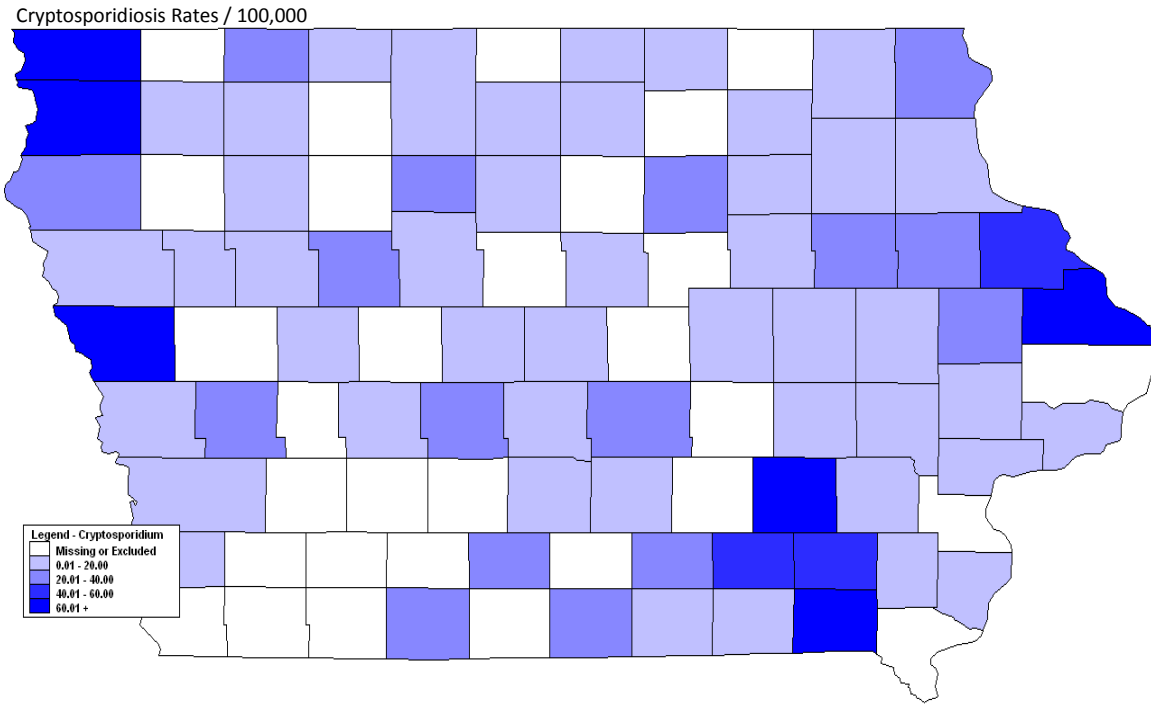
5-YEAR CAMPYLOBACTERIOSIS DISEASE TREND



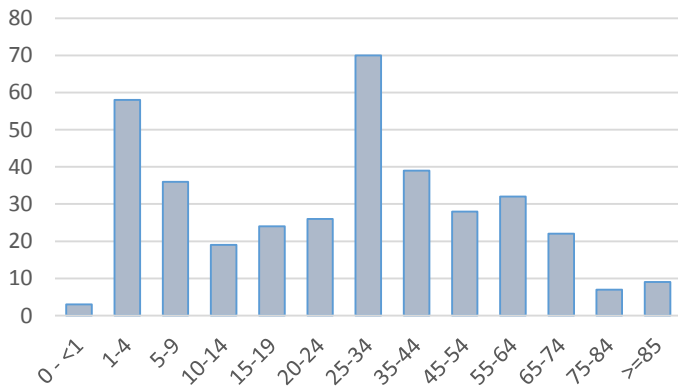
Cryptosporidiosis Summary

April 1, 2015 – March 31, 2016

Confirmed and Probable Cases

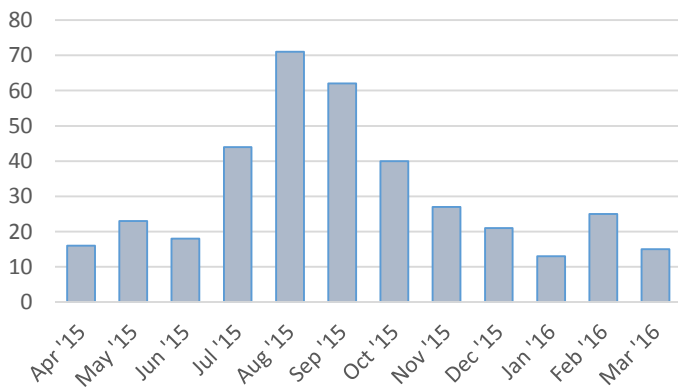


12 MONTH CYTOSPORIDIOSIS CASES BY AGE

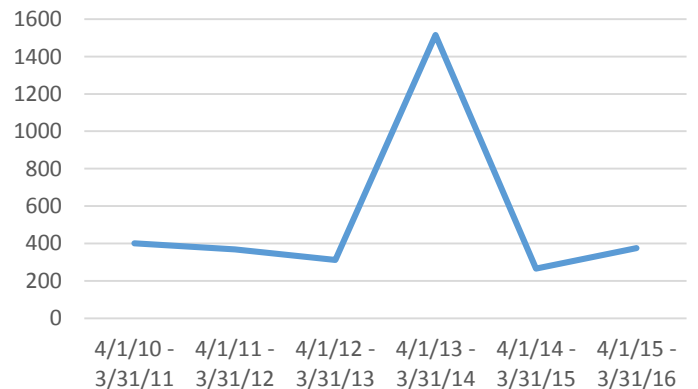


Summary				
Number of Cases	375			
Incidence rate (per 100,000 population)	12.3			
Change from 5-year average incidence (%)*	+11.6			
Age (in years)				
Mean	30			
Median	27			
Min-Max	0-95			
Gender		Number	Percent	Rate
Female		197	52.5	6.5
Male		175	46.7	5.7
Unknown		3	0.8	
* Outbreak years excluded from calculations				

12 MONTH CRYPTOSPORIDIOSIS CASES BY MONTH

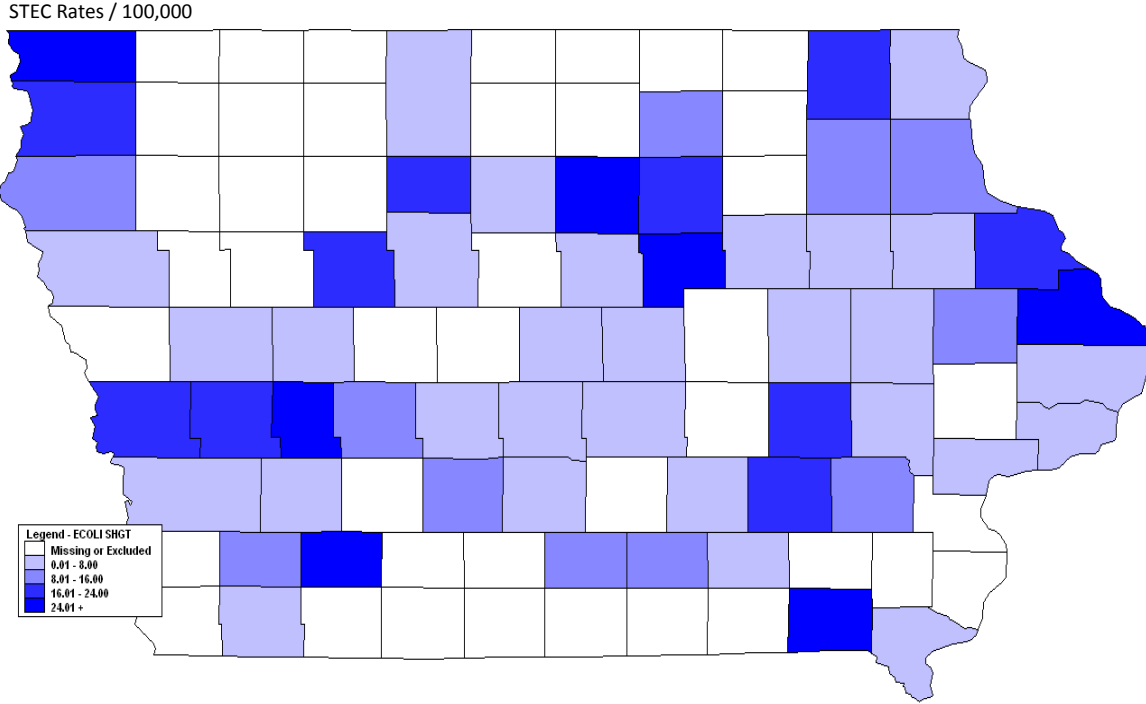


5 YEAR CRYPTOSPORIDIOSIS TREND

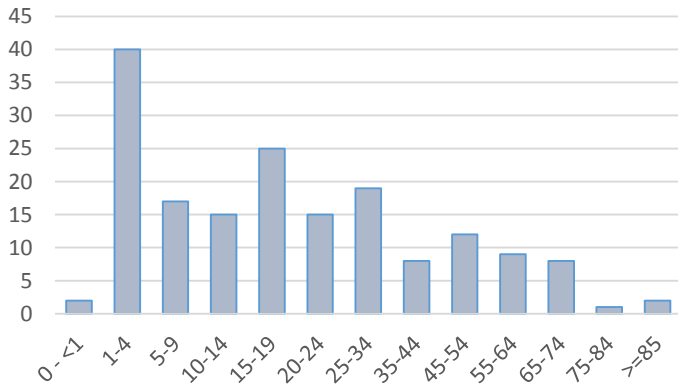


E. coli (STEC) Summary

April 1, 2015 – March 31, 2016
Confirmed and Probable Cases

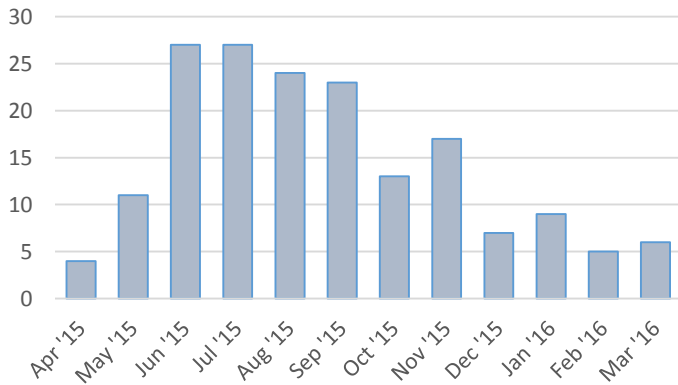


12 MONTH E. coli (STEC) CASES BY AGE

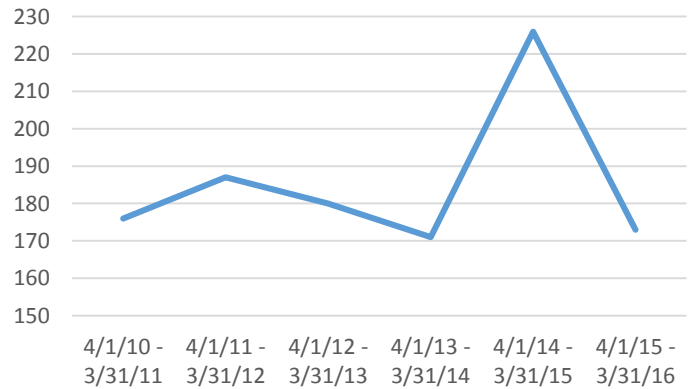


Summary				
Number of Cases	173			
Incidence rate (per 100,000 population)	5.7			
Change from 5-year average incidence (%)	-8.0			
Age (in years)				
Mean	23			
Median	17			
Min-Max	0-91			
Gender		Number	Percent	Rate
Female	89	51.4	2.9	
Male	84	48.6	2.8	

12 MONTH E. coli (STEC) REPORTS BY MONTH



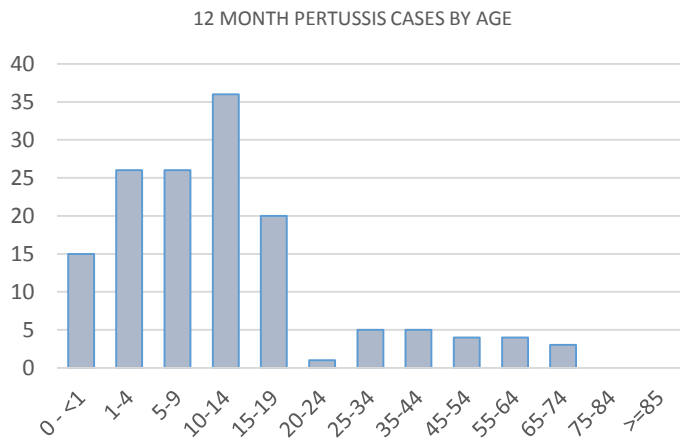
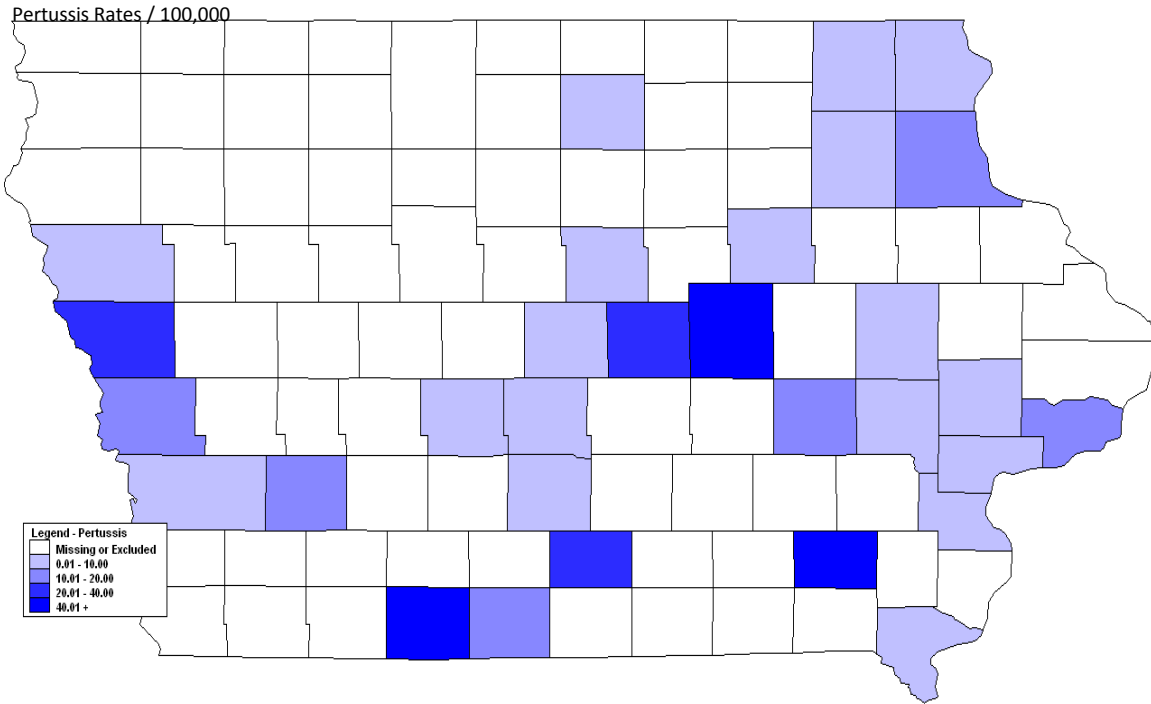
5 YEAR E. coli (STEC) TREND



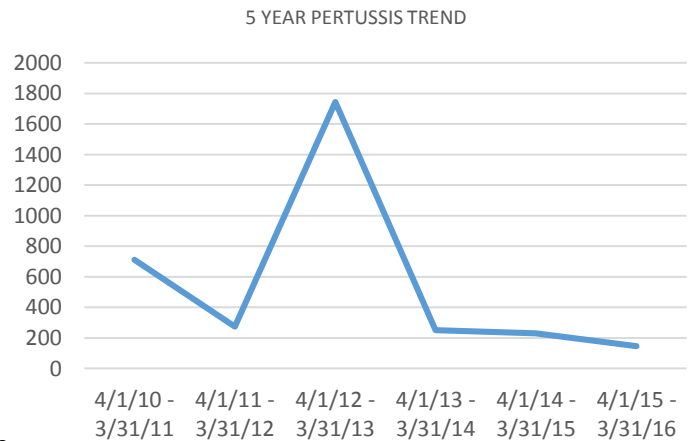
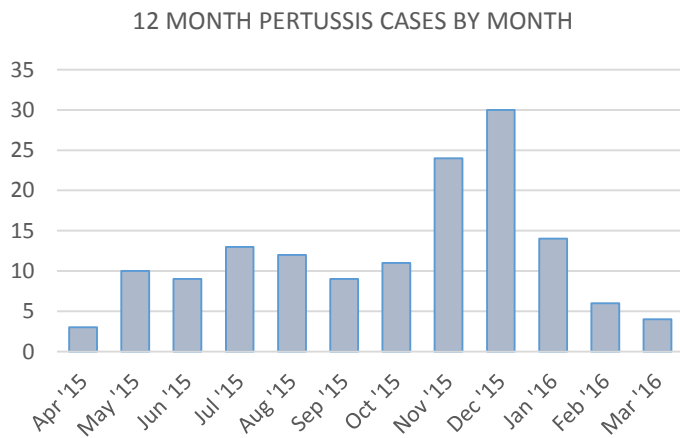
Pertussis Summary

April 1, 2015 – March 31, 2016

Confirmed and Probable Cases

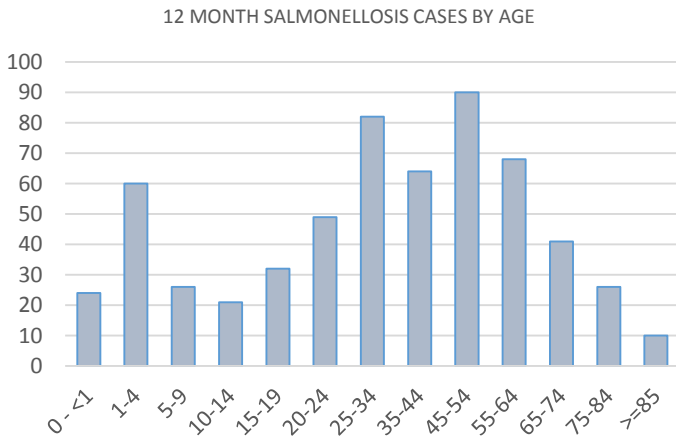
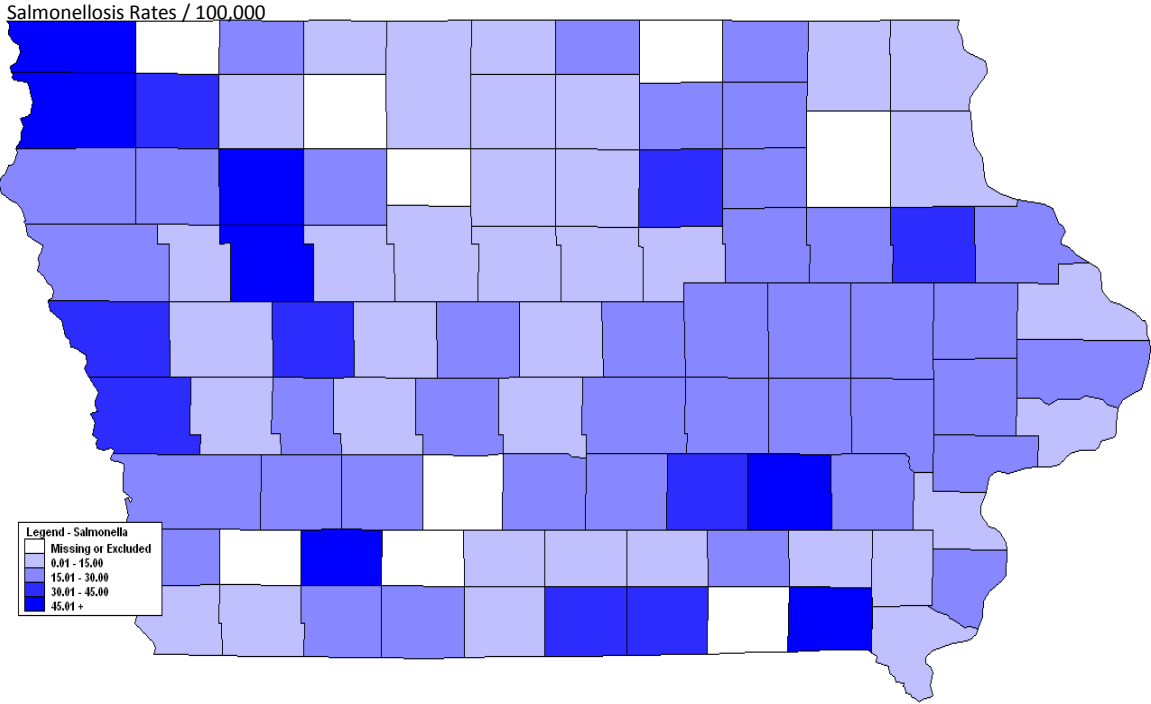


Summary			
Number of Cases	145		
Incidence rate (per 100,000 population)	4.8		
Change from 5-year average incidence (%)*	-38.6		
Age (in years)			
Mean	14		
Median	10		
Min-Max	0-71		
Gender		Number	Percent
Female	74	51.0	2.4
Male	67	46.2	2.2
Unknown	5	3.4	
* Outbreak years excluded from calculations			

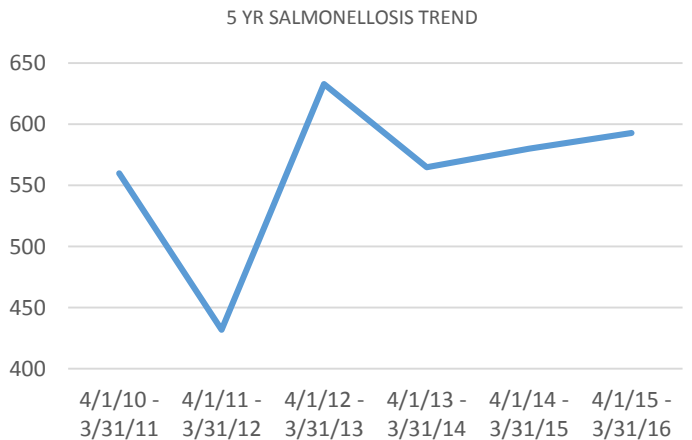
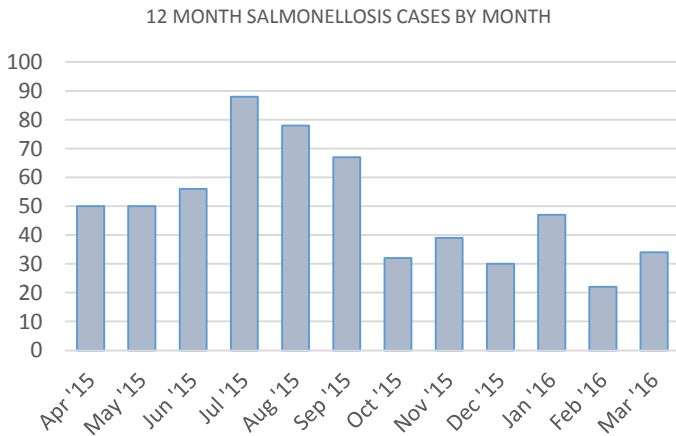


Salmonellosis Summary

April 1, 2015 – March 31, 2016
Confirmed and Probable Cases

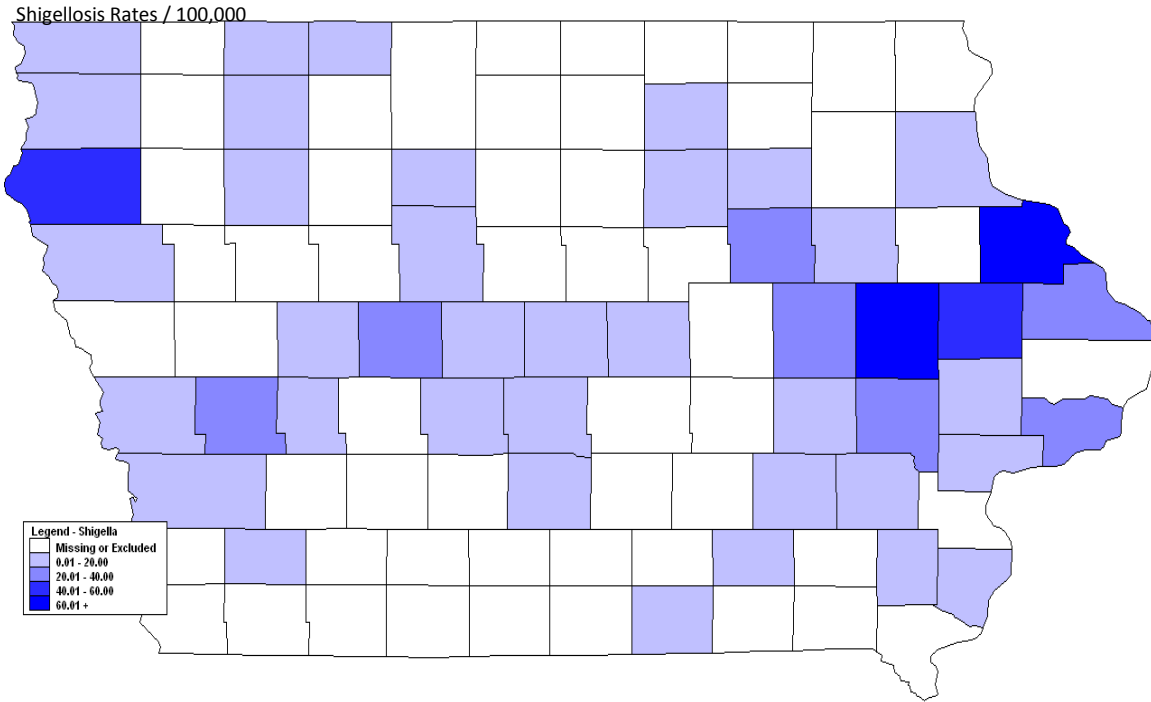


Summary				
Number of Cases	593			
Incidence rate (per 100,000 population)	19.5			
Change from 5-year average incidence (%)	+ 7.0			
Age (in years)				
Mean	37			
Median	35			
Min-Max	0-95			
Gender		Number	Percent	Rate
Female	305	51.4	10.0	
Male	284	47.9	9.3	
Unknown	4	0.7		

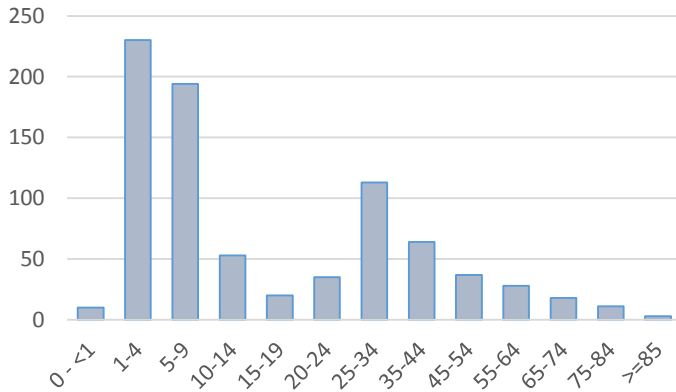


Shigellosis Summary

April 1, 2015 – March 31, 2016
Confirmed and Probable Cases

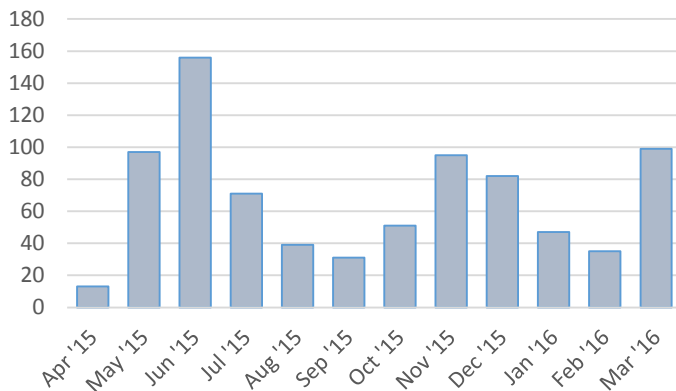


12 MONTH SHIGELLOSIS CASES BY AGE

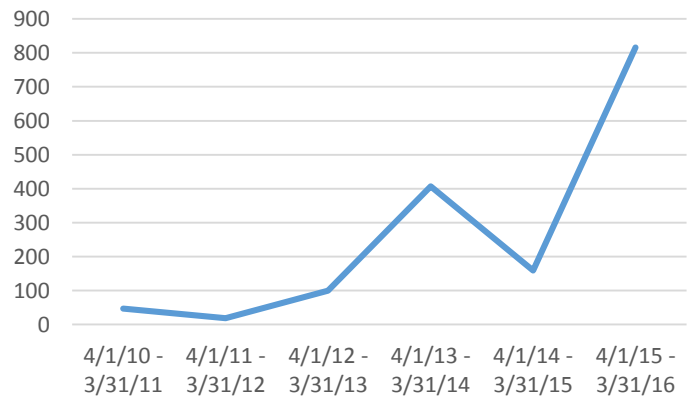


Summary				
Number of Cases	816			
Incidence rate (per 100,000 population)	26.8			
Change from 5-year average incidence (%)	+458.9			
Age (in years)				
Mean	19			
Median	9			
Min-Max	0-90			
Gender		Number	Percent	Rate
Female	454	55.6	14.9	
Male	350	42.9	11.5	
Unknown	12	1.5		

12 MONTH SHIGELLOSIS CASES BY MONTH



5 YR SHIGELLOSIS TREND



IOWA DEPARTMENT OF PUBLIC HEALTH

WWW.IDPH.IOWA.GOV

1-866-27-9878

CENTER FOR ACUTE DISEASE EPIDEMIOLOGY

WWW.IDPH.IOWA.GOV/CADE

1-800-362-2736

Gerd Clabaugh, MPA	Director
Kathy Stone	Interim Deputy Director
Ken Sharp, MPA, RS	Division Director
Patricia Quinlisk, MD, MPH	Medical Director/State Epidemiologist
Ann Garvey, DVM, MPH, MA	Public Health Veterinarian/ Deputy State Epidemiologist

CENTER FOR ACUTE DISEASE EPIDEMIOLOGY STAFF

Shawnice Cameron	Administrative Assistant
Julie Coughlin, MPH	Vector-Borne Disease Epidemiologist/ Influenza Surveillance Program Coordinator
Chris Galeazzi, MPH	Field Epidemiologist
Nick Kalas, MPH	Field Epidemiologist
Jill Newland	Iowa Disease Surveillance System (IDSS) Data Manager
Kemi Oni, MPH	Foodborne Disease Epidemiologist
Rob Ramaekers, MPH, CPH	Epidemiologist/Vaccine-Preventable Disease Program Coordinator
Mary Rexroat, BS, RN	Nurse Epidemiologist
Ngoc Tran, MPA, CPM	Iowa Disease Surveillance System (IDSS) Coordinator
Diana Von Stein, MPH	Field Epidemiologist
Nancy Wilde, BS, LPN	Epidemiologist/Healthcare-Associated Infection Program Coordinator
Andy Weigel, MSW	Field Epidemiologist