



Iowa Influenza Surveillance Network (IISN)

Influenza-like Illness (ILI) and Other Respiratory Viruses

Monthly Activity Report

June 2015



All data presented in this report are provisional and may change as additional reports are received

Iowa statewide activity summary:

Influenza activity in Iowa is very low. There was no laboratory confirmed case detected in June. Other respiratory viruses reported in this period include: 94 cases of rhinovirus/enterovirus, 12 adenovirus, 19 para influenza 3, two para influenza 4, four RSV, and 10 hMPV. During the 2014-2015 influenza season, 62 influenza outbreaks were reported in Iowa long-term care facilities and three confirmed influenza-related deaths in children (age 0-17).

National activity summary - (CDC):

Condensed reports over the summer months are available at <http://www.cdc.gov/flu/weekly/>

International activity summary - (WHO):

Globally, the Southern hemisphere had increased influenza activity whereas influenza activity was at low levels in the Northern hemisphere. Detailed information can be found online at www.who.int/influenza/surveillance_monitoring/updates/latest_update_GIP_surveillance/en/.

Laboratory surveillance program:

The State Hygienic Laboratory (SHL) is the primary lab for influenza testing and reporting in Iowa. SHL reports the number of tests performed and the type and strain of positive tests to the influenza surveillance network several times every week. In addition, SHL surveys clinical and reference labs for the number of rapid-antigen tests performed and number positive weekly. This report also includes the positive non-influenza virus tests reported from SHL, the Dunes Medical Laboratories at Mercy Medical Center in Sioux City, and Iowa Methodist Medical Center in Des Moines.

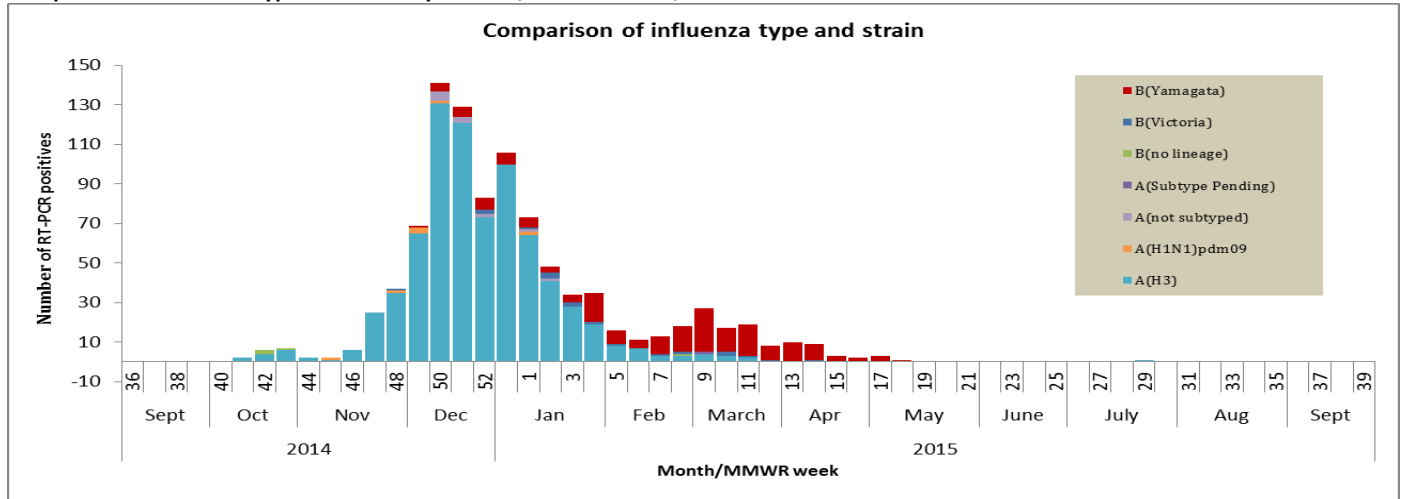
Age Group	JUNE 2015				YEAR TO DATE (9/1/14 – PRESENT WEEK)			
	Flu A				Flu A			
	A(H1N1)pdm09	A(H3)	Subtype Pending	Not subtyped	A(H1N1)pdm09	A(H3)	Subtype Pending	Not subtyped
0-4	0(0%)	0(0%)	0(0%)	0(0%)	3(38%)	64(9%)	0(0%)	1(9%)
5-17	0(0%)	0(0%)	0(0%)	0(0%)	1(13%)	122(17%)	0(0%)	2(18%)
18-24	0(0%)	0(0%)	0(0%)	0(0%)	0(0%)	62(8%)	0(0%)	1(9%)
25-49	0(0%)	0(0%)	0(0%)	0(0%)	2(25%)	83(12%)	0(0%)	1(9%)
50-64	0(0%)	0(0%)	0(0%)	0(0%)	1(12%)	63(9%)	0(0%)	3(27%)
>64	0(0%)	0(0%)	0(0%)	0(0%)	1(12%)	327(45%)	0(0%)	3(27%)
Total	0	0	0	0	8	721	0	11

*Counts of three or less are sometimes suppressed to protect confidentiality. Note that counts may not add up to the total due to missing age information
Only cases of Iowa residents are included
"Not subtyped" column is due to weak detections. This can be due to poor collection, timing of collection or stage of infection.

Age Group	JUNE 2015			YEAR TO DATE (9/1/14 – PRESENT WEEK)		
	Flu B			Flu B		
	Victoria Lineage	Yamagata Lineage	Lineage Pending	Victoria Lineage	Yamagata Lineage	Lineage Pending
0-4	0(0%)	0(0%)	0(0%)	4(23%)	15(9%)	0(0%)
5-17	0(0%)	0(0%)	0(0%)	4(23%)	45(27%)	0(0%)
18-24	0(0%)	0(0%)	0(0%)	3(12%)	6(4%)	0(0%)
25-49	0(0%)	0(0%)	0(0%)	2(12%)	33(19%)	0(0%)
50-64	0(0%)	0(0%)	0(0%)	2(12%)	26(16%)	0(0%)
>64	0(0%)	0(0%)	0(0%)	3(18%)	42(25%)	0(0%)
Total	0	0	0	18	167	0

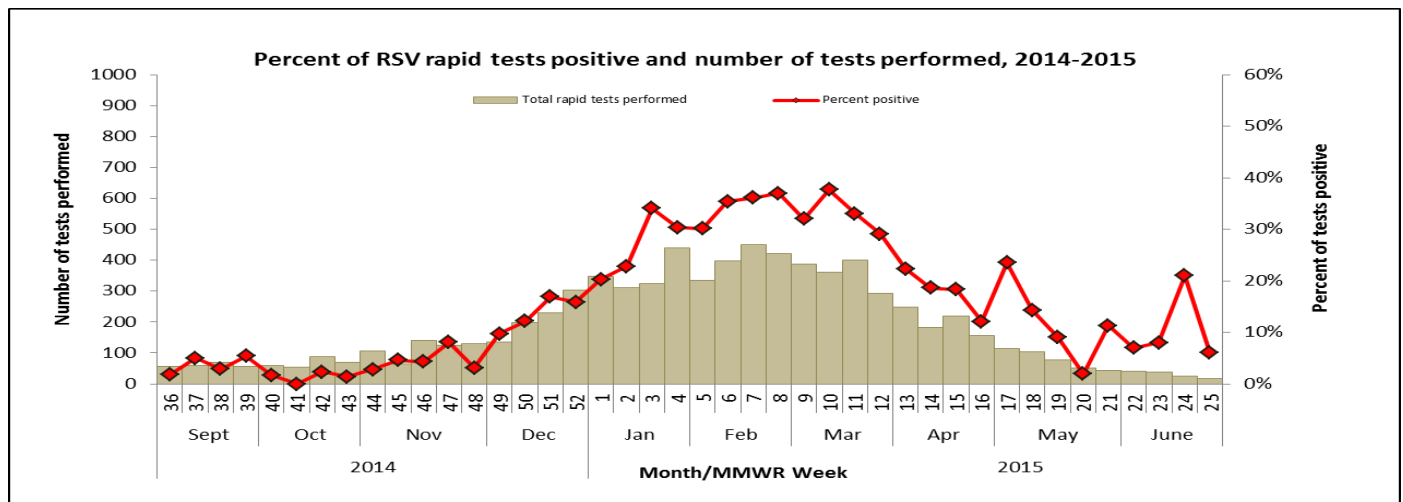
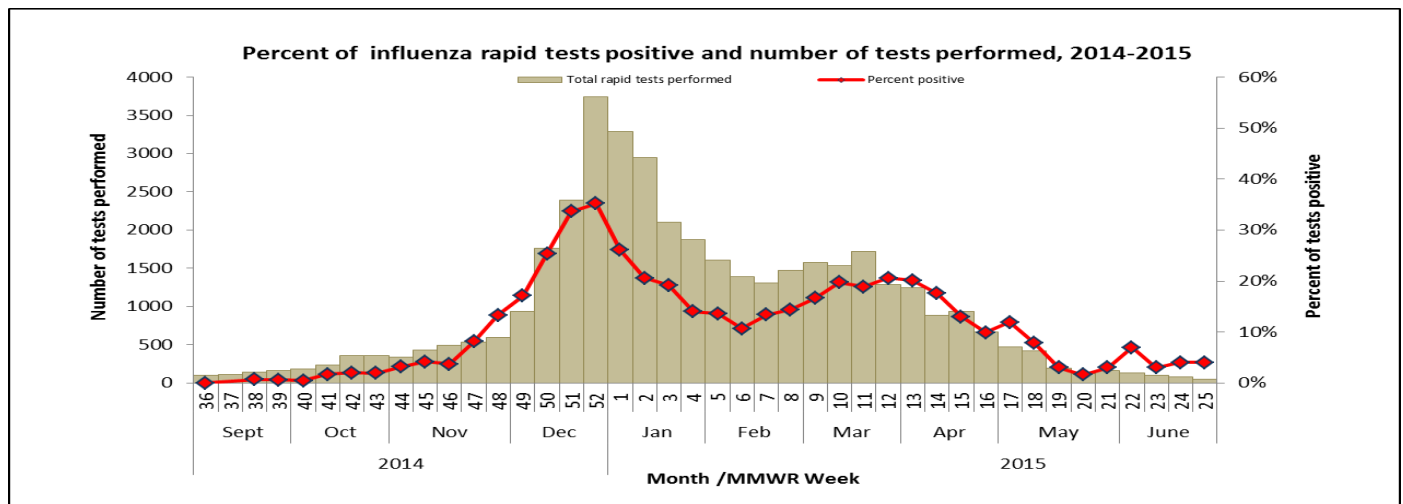
*Counts of three or less are sometimes suppressed to protect confidentiality. Note that counts may not add up to the total due to missing age information
Only cases of Iowa residents are included

Comparison of influenza type and strain by MMWR/calendar week, 2014-2015 season



Rapid influenza and RSV test surveillance: June 2015

The State Hygienic Laboratory (SHL) runs a weekly web-based survey program where laboratorians report the number of influenza and respiratory syncytial virus (RSV) rapid tests performed and the number of tests positive. This table includes only the number of patients tested for influenza or RSV at laboratory surveillance sites throughout the state. This table does not provide case counts.

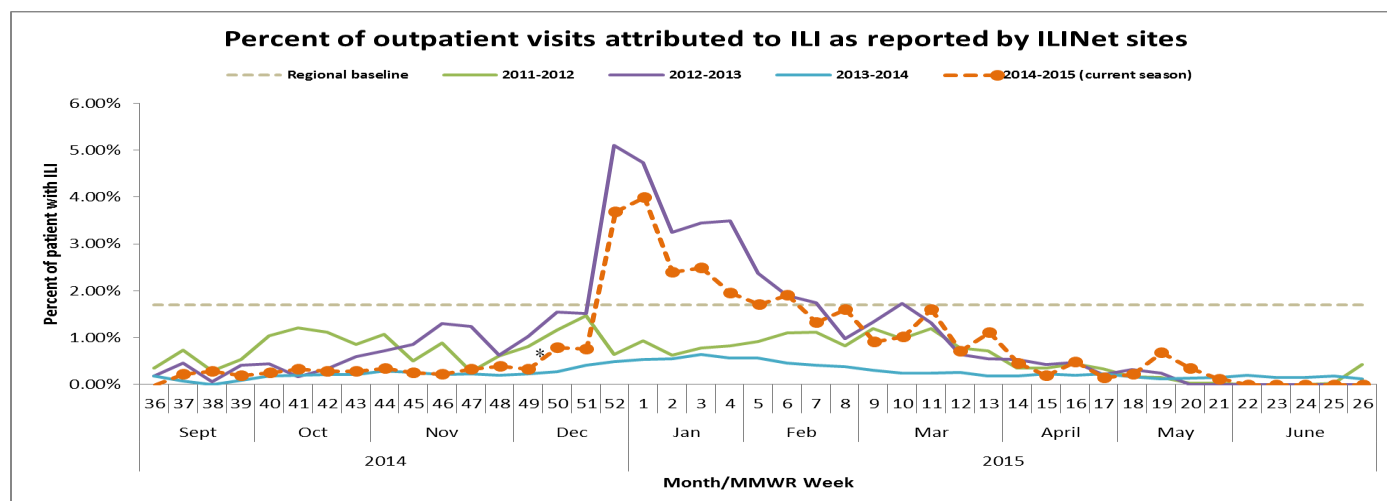


Non-influenza respiratory virus:

Viruses	JUNE	CUMULATIVE (9/1/14 – PRESENT WEEK)
Adenovirus	12	302
Parainfluenza Virus Type 1	0	3
Parainfluenza Virus Type 2	0	101
Parainfluenza Virus Type 3	19	209
Parainfluenza Virus Type 4	2	23
Rhinovirus/Enterovirus	94	1163
Respiratory syncytial virus (RSV)	4	472
Human metapneumovirus (hMPV)	10	212
Total	141	2485

Outpatient health care provider surveillance program (ILINet):

Outpatient health care providers who participate in the ILINet (a national influenza surveillance program) report the number of patients seen with influenza-like illness and the total number of patient visits each week. This system is a key part of Iowa's influenza surveillance. Iowa health care providers interested in joining this surveillance program should contact Kemi Oni at 515-725-2136 or oluwakemi.oni@idph.iowa.gov for more information.



*Database used to calculate this percentage has been modified to more accurately reflect what is occurring in acute care outpatient clinics in Iowa.

Other resources:

Vaccine:

Influenza vaccine recommendation: <http://www.idph.state.ia.us/ImmTB/Immunization.aspx?prog=Imm&pg=Flu>

CDC vaccine information: <http://www.cdc.gov/flu/faq/flu-vaccine-types.htm>

Vaccine finder: <http://vaccinefinder.org/>

Neighboring states' influenza information:

Illinois: <http://www.idph.state.il.us/flu/surveillance.htm>

Minnesota: <http://www.health.state.mn.us/divs/idepc/diseases/flu/stats/index.html>

Missouri: <http://health.mo.gov/living/healthcondiseases/communicable/influenza/reports.php>

South Dakota: <http://doh.sd.gov/diseases/infectious/flu/>