

Surveillance Plan for Allamakee County

The Iowa DNR is asking for assistance from landowners and hunters in dealing with what it hopes is an isolated case of Chronic Wasting Disease (CWD) found in a wild deer harvested in Allamakee County. The deer, harvested south of Harpers Ferry in Yellow River State Forest during the 2013 regular gun season, is the first known case of CWD in a wild deer in the State of Iowa. The DNR has collected and tested more than 51,000 samples statewide since 2002.

The DNR's action plan is to increase surveillance efforts in a 5-mile radius from where the positive deer was harvested. This additional surveillance along with the over 1,100 deer sampled in the past 12 years in this immediate area will help determine if CWD has spread to other deer. If no further cases are found in the next three years, the DNR will go back to routine testing. If additional cases are found, the DNR will work with the public to decide how to proceed.

The DNR is encouraging the public to report all roadkill deer and sick or severely emaciated deer found in the targeted area (see map) to the Iowa DNR at any of the following numbers:

Unit Headquarters 563.546.7962

Biologist Terry Haindfield 563.380.3422

Conservation Officer Bill Collins 563.380.0801

Conservation Officer Jerry Farmer 563.880.0422

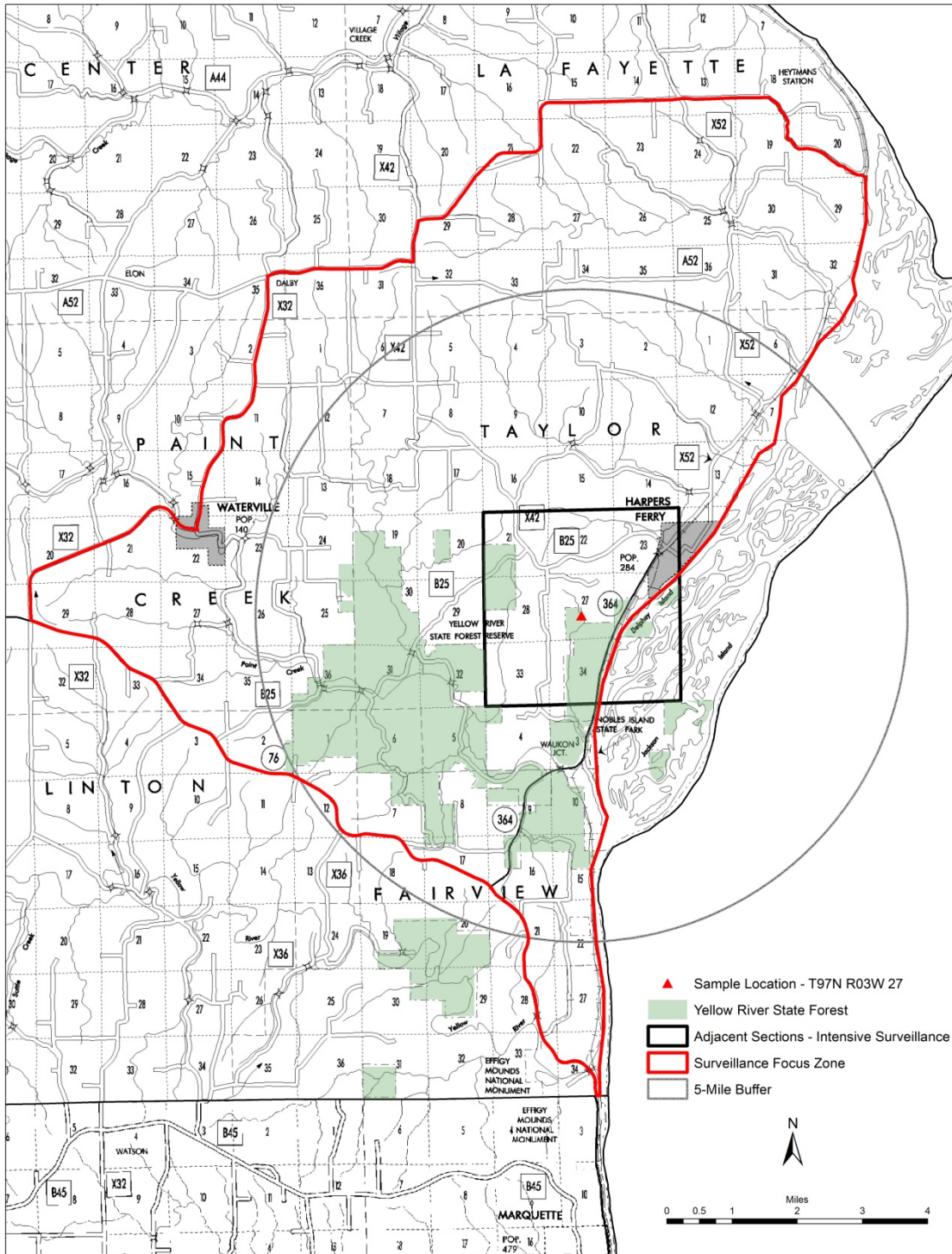
Conservation Officer Burt Walters 563.880.0108

The goal for this fall will be to test 500 deer in Allamakee County, including 300 from the targeted area around where the infected deer was killed. Local DNR staff will work with hunters to obtain samples for testing during the 2014-15 deer hunting seasons.

The DNR is especially interested in testing deer harvested from islands in the Mississippi River or from land adjoining the river near Harpers Ferry. Hunters are asked to refrain from shooting the deer in the head because it makes testing more difficult.

Hunters can help reduce the risk of spreading CWD by not leaving bones on the landscape after processing their deer. A better option is to bury them or take them to a clay-lined landfill.

Lastly, everyone should also refrain from feeding and baiting deer in the targeted area. The risk of spreading any disease is greater when animals are concentrated in a very small area.



The targeted area is roughly an area outlined by Highway 76, Waterville Road, Elon Road to Lafayette Ridge Drive, and then south along the Mississippi River boundary back to Highway 76 near Effigy Mounds National Monument.

<http://www.iowadnr.gov/Hunting/DeerHunting/CWDEHDInformation.aspx>