

A d d e n d u m

Iowa Department of Transportation
Office of Contracts

Date of Letting: December 15, 2015
Date of Addendum: November 23, 2015

B.O.	Proposal ID	Proposal Work Type	County	Project Number	Addendum
019	77-0803-198	BRIDGE AND APPROACHES - STEEL GIRDER	POLK	NHS-080-3(198)128--11-77 IN-080-3(207)128--15-77	15DEC019.A01

ADD the attached plan sheets U.3, U.4, & U.5 to NHS-080-3(198)128--11-77 plans.

GENERAL NOTES:

Details shown here on are for the construction of Concrete Median Retaining Walls between concrete barriers at locations where a Utility Access Cover for Median Intakes is needed. The purpose of the retaining wall is to retain the granular backfill at these intake locations.

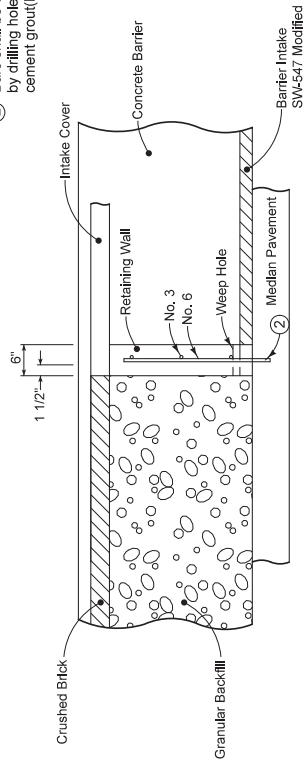
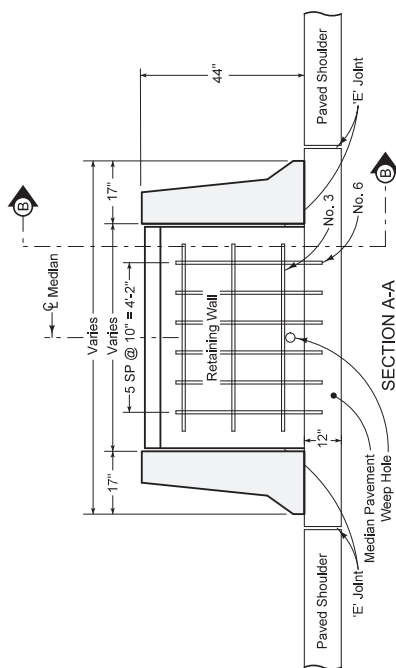
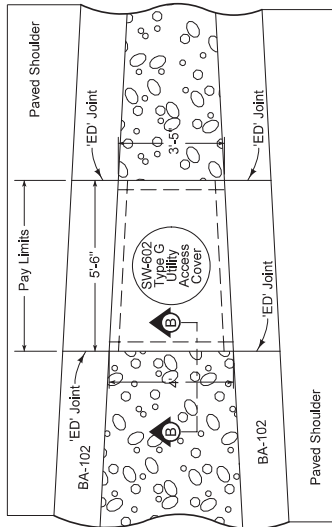
All reinforcing steel to be epoxy coated.

Price bid for "Barrier Intake SW-547 Modified" shall be full compensation for furnishing all materials required, including any reinforcing steel specified, and all equipment and labor necessary to construct the wall.

Contract Items:
Barrier Intake SW-547 Modified

Tabulations:
104-5B

- Weep holes shall be PVC pipe, 3" in diameter and placed at 20 foot intervals. The PVC pipe for Weep holes shall be secured sufficiently to prevent movement during slip form operations and shall be cleaned to remove any concrete immediately after slip forming. Weep holes shall be covered with 24" x 24" copper screening or galvanized hardware cloth and shall extend a minimum of 12" on the median pavement and 12" up the barrier centered on the weep hole. Two layers of 24" x 24" Engineering Fabric shall extend a minimum of 12" on the median pavement and 12" up the barrier centered on the weep hole. The copper screening or galvanized hardware cloth and Engineering Fabric shall be secured sufficiently to prevent movement during placement of backfill materials. The cost of supplying and installing the screening and the Engineering Fabric shall be considered incidental to the bid item "Barrier Intake, SW-547 Modified". Weep holes shall not be placed near transverse joints (minimum 5' separation).
- Bars shall be either installed in supporting surface when placed or installed by drilling holes using polymer grout (Material's I.M. 491.11) or hydraulic cement grout (Material's I.M. 491.13).

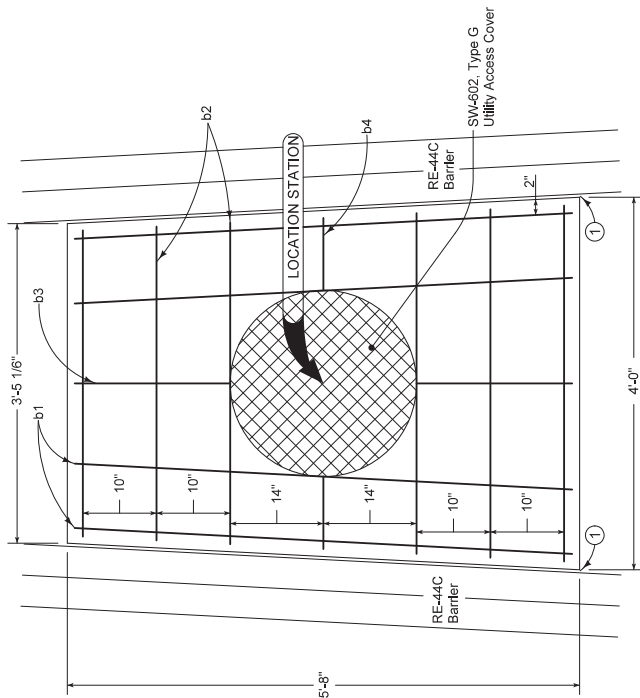


The clear distance from face of concrete to near edge or end of reinforcing bar to be 2 in. unless otherwise noted.

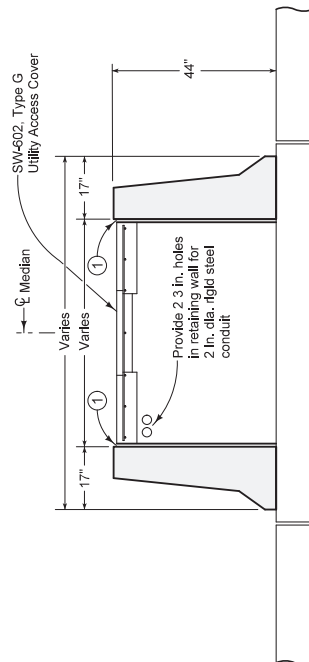
SECTION B-B

SECTION A-A

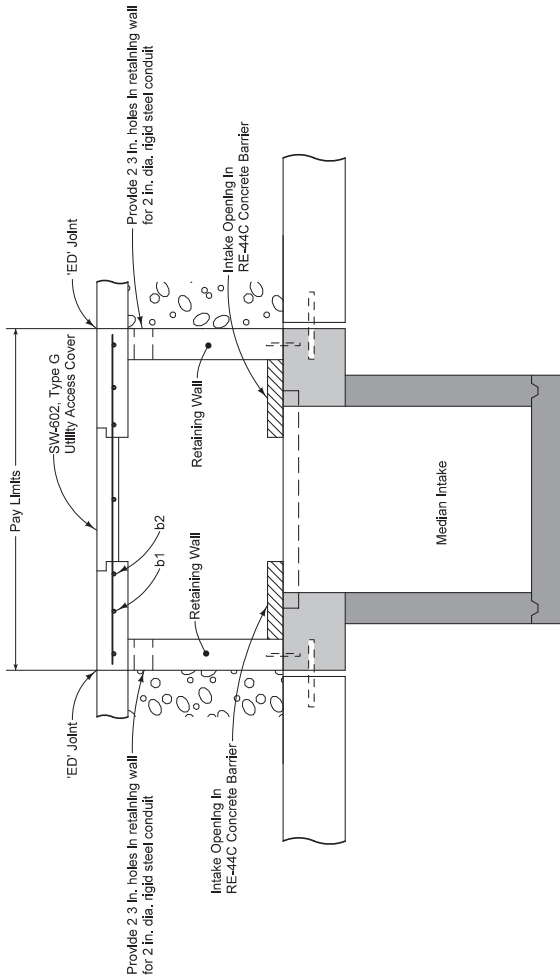
MODIFIED	REVISION	04-21-15
	4	
STANDARD ROAD PLAN		
SW-547		
SHEET 2 of 3		
MODIFICATIONS:		
APPROVED BY DESIGN METHODS ENGINEER		
BARRIER INTAKE		
SW-547 MODIFIED		



TOP VIEW



ELEVATION



The clear distance from face of concrete to rear edge of end of reinforcing bar to be 2 in. unless otherwise noted.

GENERAL NOTES:
 This detail illustrates the construction and installation of a utility access for existing grate intakes in the median.

Contract items are:
 Utility Access Cover as per plan
 Concrete Barrier, RE-44C
 P.C. Concrete Retaining Wall

Slots will be constructed in the concrete barrier. The concrete barrier may be slip formed or poured in place. P.C. Concrete Retaining wall will be constructed on both sides of the existing intake as shown. The intake top will be poured in place or precast and set on top of the walls.

MODIFIED	REVISION
	4 04-21-15
STANDARD ROAD PLAN	
SW-547	
SHEET 3 of 3	
MODIFICATIONS:	
APPROVED BY DESIGN METHOD ENGINEER	
BARRIER INTAKE	
SW-547 MODIFIED	