

A d d e n d u m

Iowa Department of Transportation
Office of Contracts

Date of Letting: October 20, 2015
Date of Addendum: October 6, 2015

B.O.	Proposal ID	Proposal Work Type	County	Project Number	Addendum
005	42-C042-077-A	BRIDGE AND APPROACHES - CCS	HARDIN	BRS-C042(77)--60-42	20OCT005.A01

Make the following changes to the Plans:

Add the following to "INDEX OF SHEETS" on plan sheet 1:

- 19. - 20. BA-201 (REV. 10-19-10)
- 21. - 23. BA-202 (REV. 10-21-14)
- 24. BA-250 (REV. 10-21-14)

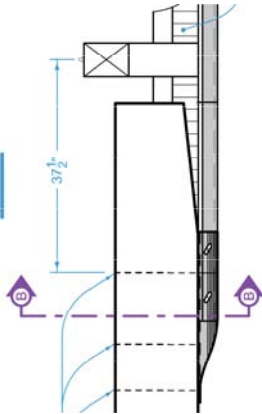
Replace plan sheet 13 with the attached.

Note revised "STEEL BEAM GUARDRAIL AT CONCRETE BARRIER OR BRIDGE RAIL END SECTION" tabulation 108-8A.

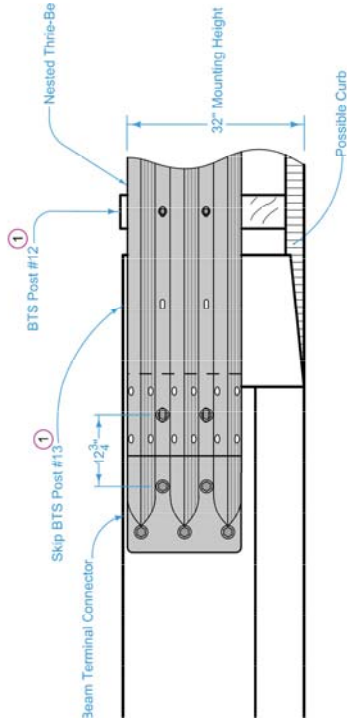
On plan sheet 14 remove Standard Road Plans BA-201 (Rev. 10-20-15), BA-202 (Rev. 10-20-15) and BA-250 (Rev. 10-20-15) from "STANDARD ROAD PLANS" tabulation 105-4.

Insert plans with the attached sheets 19 - 24.

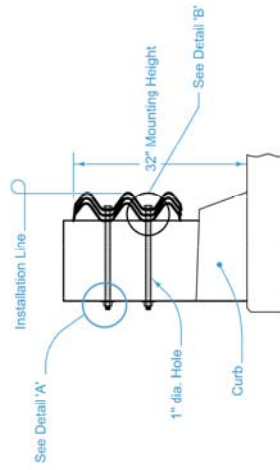
TYPE B



PLAN



ELEVATION



SECTION B-B



STANDARD ROAD PLAN

VISIONS - Changed label from Bridge End Post to Bridge

Section

APPROVED BY DESIGN METHOD 10

CR

**STEEL BEAM GUARD
BOLTED END ANC**

REVISION	2	10-21-14
----------	---	----------

SA-202

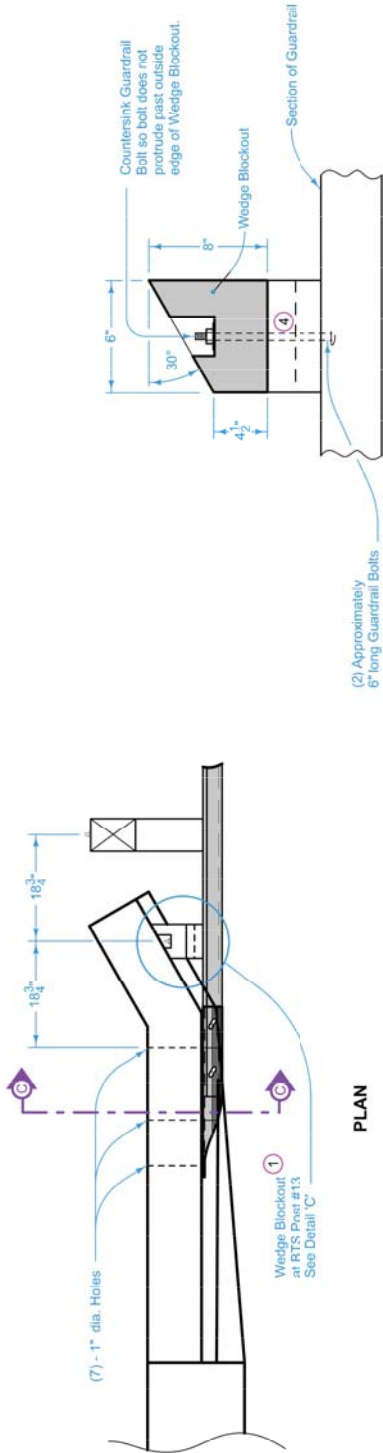
SHEET 2 of 3

Section

L

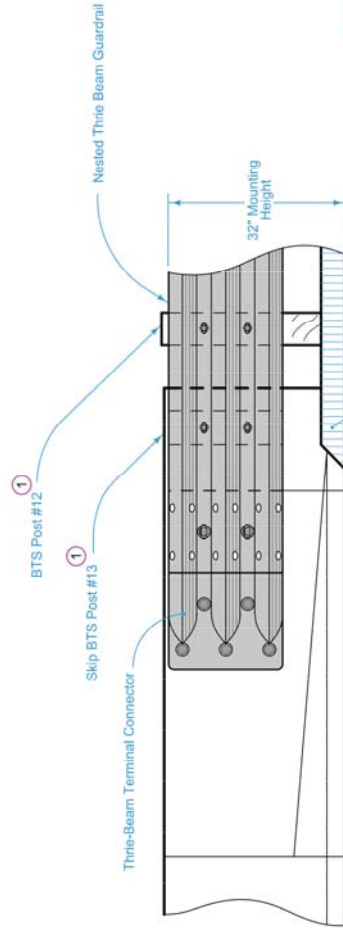
TYPE C

- ① See BA-201.
- ④ Use treated spacer boards (1 in. x 6 in. or 2 in. x 6 in.) to produce a tight fit between the wedge blockout and endpost. A nominal 1 inch gap is acceptable. Spacer boards are incidental to bolted end anchor.

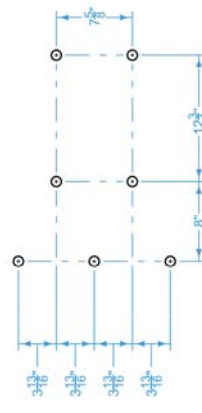


PLAN

DETAIL 'C'

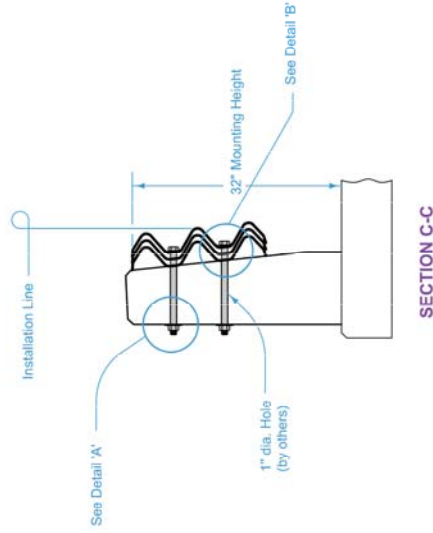


ELEVATION



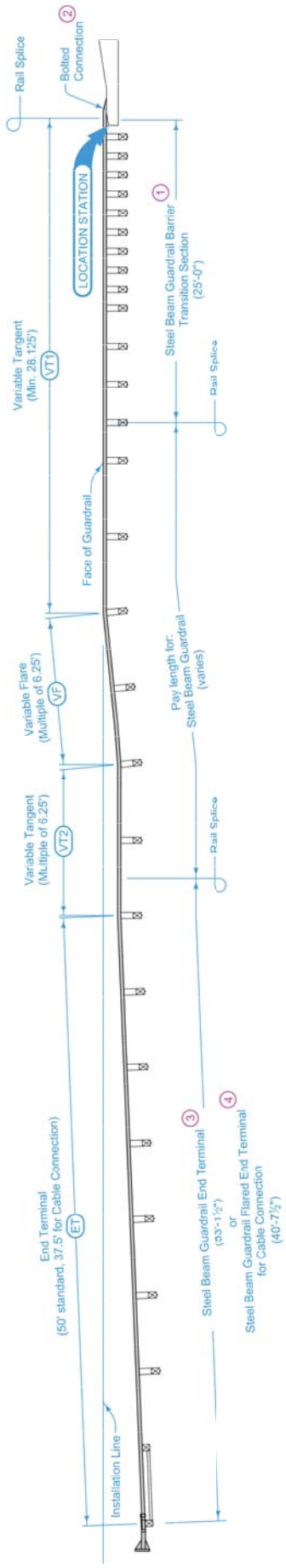
7 - BOLT PATTERN

Thrie - Beam Terminal Connector



SECTION C-C

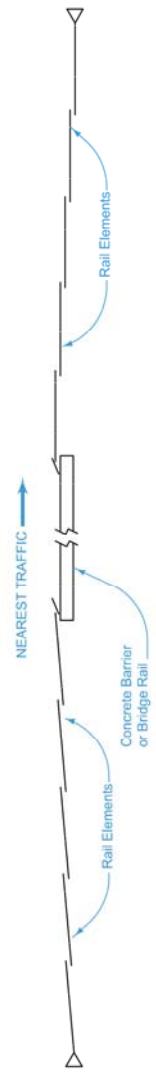
	REVISION	10-21-14
	2	
STANDARD ROAD PLAN		BA-202
REVISIONS: Changed label from Bridge End Post to Bridge Rail End Section.		
SHEET 3 of 3		
APPROVED BY DESIGN METHOD ENGINEER 		
STEEL BEAM GUARDRAIL BOLTED END ANCHOR		



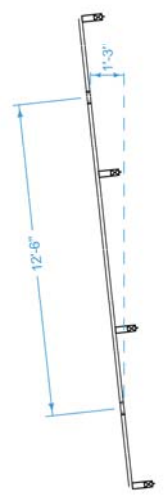
Install delineators and object markers according to SI-211.
 For grading requirements, see EW-301.
 For general guardrail details, see BA-200.

- ① See BA-201.
- ② See BA-202 for connections to concrete barriers and bridge rail end sections.
- ③ See BA-205.
- ④ See BA-206.

Possible Contract Items:
 Steel Beam Guardrail
 Steel Beam Guardrail Barrier Transition Section
 Steel Beam Guardrail End Anchor, Bolted
 Steel Beam Guardrail End Terminal
 Possible Tabulation:
 108-8A



LAPPING PROCEDURE



VARIABLE FLARE

	REVISION	3	10-21-14
	BA-250		
STANDARD ROAD PLAN			
<small>REVISIONS: Modified note 2 and changed title.</small>			
<small>APPROVED BY DESIGN METHOD ENGINEER</small> 			
STEEL BEAM GUARDRAIL INSTALLATION AT CONCRETE BARRIER OR BRIDGE RAIL END SECTION			