

A d d e n d u m

Iowa Department of Transportation
Office of Contracts

Date of Letting: July 21, 2015
Date of Addendum: July 16, 2015

B.O.	Proposal ID	Proposal Work Type	County	Project Number	Addendum
081	94-2690-625	ALTERNATE PAVEMENT TYPES-MAINLINE PAVING	WEBSTER	STP-A-2690(625)--86-94	21JUL081.A01

Make the following changes to the PROPOSAL DETAILS:

Change 135 WORKING DAYS to 165 WORKING DAYS

Make the following change to the Proposal Section Labels:

From:

Section 0002 ALTERNATE 'AA' OPTION 1: PCC
 BID THIS SECTION IF ALTERNATE 'AA' OPTION 1 IS CHOSEN
 Alt Group AA1

To:

Section 0002 BETTER VALUE: ALTERNATE 'AA' OPTION 1: PCC
 BID THIS SECTION IF ALTERNATE 'AA' OPTION 1 IS CHOSEN
 Alt Group AA1

and

From:

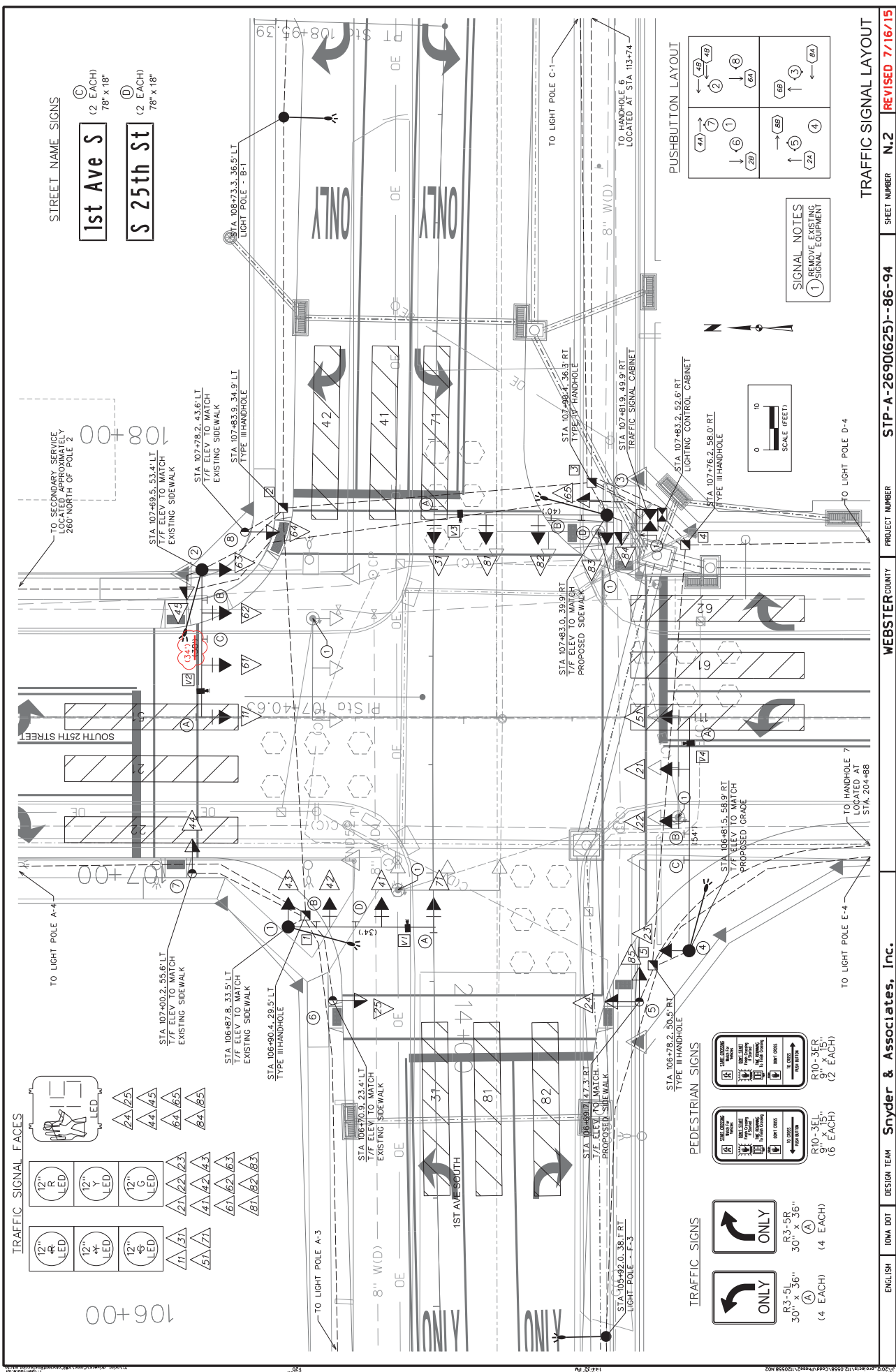
Section 0003 ALTERNATE 'AA' OPTION 2: HMA
 BID THIS SECTION IF ALTERNATE 'AA' OPTION 2 IS CHOSEN
 Alt Group AA2

To:

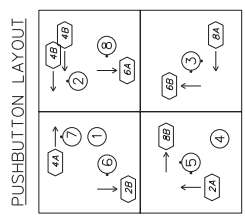
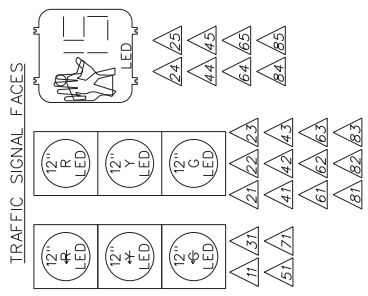
Section 0003 BASE ALTERNATIVE: ALTERNATE 'AA' OPTION 2: HMA
 BID THIS SECTION IF ALTERNATE 'AA' OPTION 2 IS CHOSEN
 Alt Group AA2

REPLACE plan sheet N.2 with the attached.

Pole #2 shall be 34'. The quantities and N sheets reflect this; however, there was one callout on sheet N.2 that was incorrect.



STREET NAME SIGNS
1st Ave S (2 EACH) 78" x 18"
S 25th St (2 EACH) 78" x 18"



SIGNAL NOTES
 (1) REMOVE EXISTING SIGNAL EQUIPMENT

TRAFFIC SIGNAL LAYOUT
 SHEET NUMBER **N.2**
 REVISED **7/16/15**

PROJECT NUMBER STP-A-2690(625)--86-94

WEBSTER COUNTY

DESIGN TEAM Snyder & Associates, Inc.

ENGLISH IDMA DOT