

## Uncontrolled Intersection Report

Senate File 2355, passed during the 2014 session of the 85<sup>th</sup> General Assembly, states: “Sec. 22. INTERSECTION REPORT. By October 1, 2014, the county engineer of each county shall provide a report to the department of transportation identifying all locations in the county where two different roads or highways having speed limits of 55 miles per hour or greater intersect but are not controlled by an official traffic-control signal or by official traffic-control devices that direct traffic approaching from every direction to stop or yield before entering the intersection. On or before December 31, 2014, the department shall file a report with the legislative services agency detailing the number and locations of the intersections identified in the county engineers’ reports.”

In response to the above request; the DOT has created an online map depicting uncontrolled intersections throughout Iowa where the speed limit of one or more of the intersecting roads is 55 mph. The numbers will appear substantial due to the speed limit of 55 mph on rural gravel roads between sunrise and sunset.

The dataset was initially created from an intersection database which contained thousands of intersections where the control was unknown. County engineers were asked to identify the control for these unknown intersections. An assumption was made that any intersection marked with a valid control was okay. Every county responded to the request, which allowed the DOT to develop a map showing the location of all uncontrolled intersections in the state. County engineers were asked to review this map and respond with any changes they would like made. Few counties responded with changes and the map that is now online has been updated. The uncontrolled intersection count breaks down as follows:

County_Number	County_Name	Count
1	ADAIR	88
2	ADAMS	70
3	ALLAMAKEE	249
4	APPANOOSE	158
5	AUDUBON	230
6	BENTON	145
7	BLACK HAWK	218
8	BOONE	357
9	BREMER	256
10	BUCHANAN	167
11	BUENA VISTA	191
12	BUTLER	350
13	CALHOUN	172
14	CARROLL	263
15	CASS	102
16	CEDAR	294

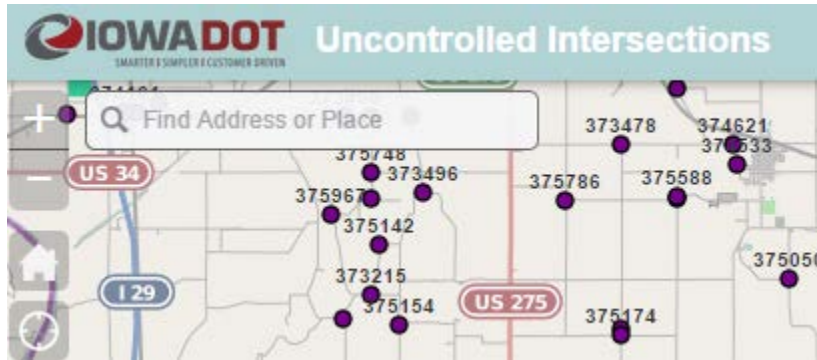
17	CERRO GORDO	289
18	CHEROKEE	268
19	CHICKASAW	237
20	CLARKE	321
21	CLAY	297
22	CLAYTON	217
23	CLINTON	269
24	CRAWFORD	265
25	DALLAS	130
26	DAVIS	316
27	DECATUR	194
28	DELAWARE	110
29	DES MOINES	319
30	DICKINSON	124
31	DUBUQUE	61
32	EMMET	176
33	FAYETTE	337
34	FLOYD	253
35	FRANKLIN	343
36	FREMONT	136
37	GREENE	314
38	GRUNDY	255
39	GUTHRIE	249
40	HAMILTON	252
41	HANCOCK	243
42	HARDIN	312
43	HARRISON	260
44	HENRY	263
45	HOWARD	228
46	HUMBOLDT	191
47	IDA	221
48	IOWA	281
49	JACKSON	188
50	JASPER	263
51	JEFFERSON	156
52	JOHNSON	177
53	JONES	255
54	KEOKUK	294
55	KOSSUTH	334
56	LEE	162
57	LINN	281
58	LOUISA	210
59	LUCAS	240

60	LYON	74
61	MADISON	144
62	MAHASKA	583
63	MARION	15
64	MARSHALL	244
65	MILLS	90
66	MITCHELL	246
67	MONONA	387
68	MONROE	33
69	MONTGOMERY	110
70	MUSCATINE	211
71	O'BRIEN	236
72	OSCEOLA	123
73	PAGE	188
74	PALO ALTO	254
75	PLYMOUTH	401
76	POCAHONTAS	266
77	POLK	39
78	POTTAWATTAMIE	306
79	POWESHIEK	110
80	RINGGOLD	24
81	SAC	218
82	SCOTT	37
83	SHELBY	141
84	SIOUX	375
85	STORY	325
86	TAMA	544
87	TAYLOR	243
88	UNION	116
89	VAN BUREN	116
90	WAPELLO	82
91	WARREN	216
92	WASHINGTON	18
93	WAYNE	329
94	WEBSTER	297
95	WINNEBAGO	170
96	WINNESHIEK	349
97	WOODBURY	167
98	WORTH	187
99	WRIGHT	293
	Total:	21908

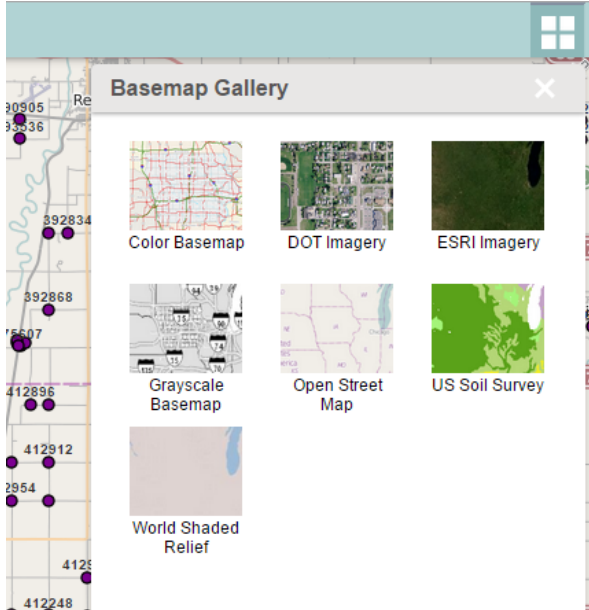
The Uncontrolled Intersection Map can be found here:

<http://goo.gl/nhCShk>

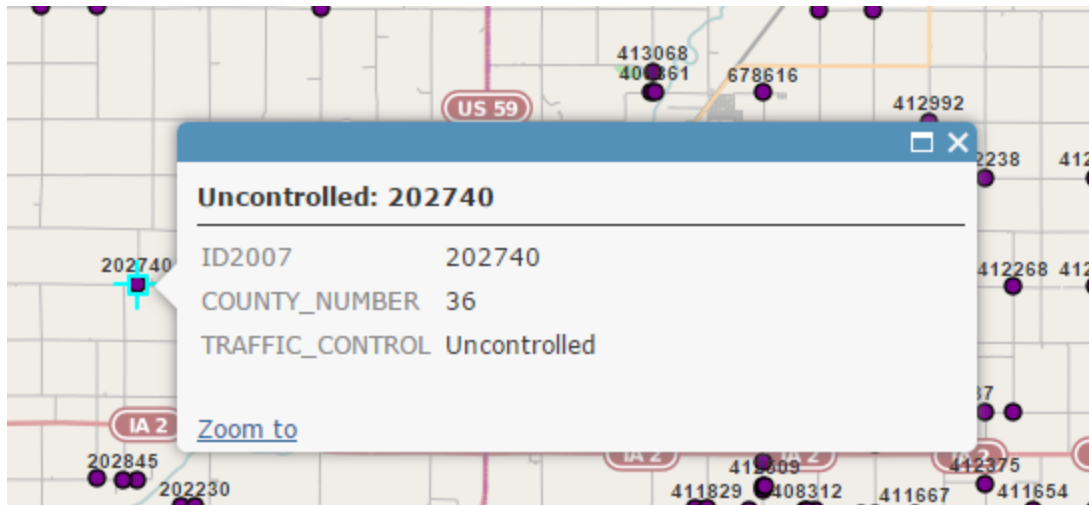
As users zoom into their county of interest, the uncontrolled intersections will pop on the map with the intersection ID labeled. Users have the ability to search for a particular area of interest (by town or county) using the search at the upper left hand corner:



Users also have the ability to switch the base map behind the intersection locations, giving them the ability to display the aerial photography of the area, for example. The map will always load with the Open Street Map base map by default. The base map button is located in the upper right area and when selected will display the base map choices:



Users can also select the intersection location on the map itself to display some of the simple attributes of that location. The attributes will appear as shown below:



Any questions or comments can be sent to Jared Renfro, Office of Research and Analytics ([jared.renfro@dot.iowa.gov](mailto:jared.renfro@dot.iowa.gov)), Ryan Wyllie, Office of Research and Analytics ([ryan.wyllie@dot.iowa.gov](mailto:ryan.wyllie@dot.iowa.gov)), or Nicole Fox, Office of Local Systems ([nicole.fox@dot.iowa.gov](mailto:nicole.fox@dot.iowa.gov)).