



Iowa Department of **REVENUE**

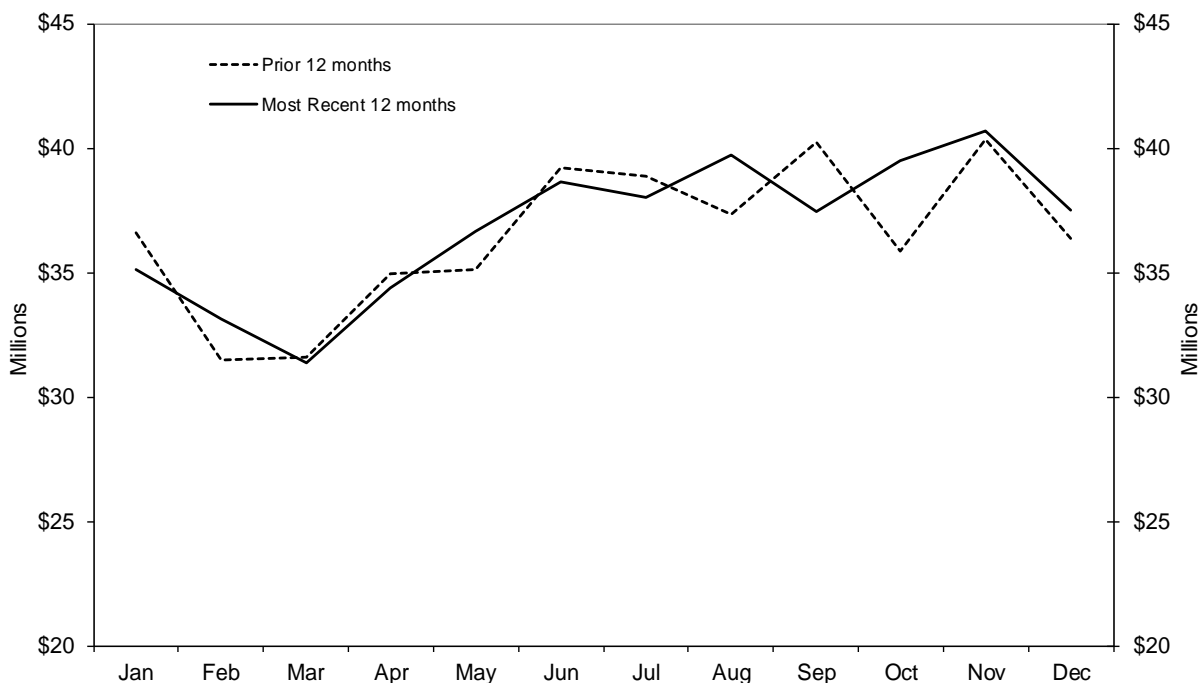
Fuel Tax Monthly Report for December 2013

The Iowa Fuel Tax Monthly Report presents the gross gallons of fuel delivered by Iowa licensed Suppliers, Blenders, Importers, Restrictive Suppliers, and Liquefied Petroleum Gas/Compressed Natural Gas Dealers and Users. The report captures information on a monthly basis and is made available on the Motor Fuel page of the Iowa Department of Revenue website at <http://www.iowa.gov/tax/forms/motor.html#Monthly>. The report is available no later than the last working day of the month following the tax period covered by the report. For example, the report containing information for the July 1 to July 31 tax period will be available by August 31.

The first page of the report shows monthly collections for eight fuel types as well as collections from prior tax periods reported as accounts receivable. Fiscal Year-To-Date and Prior Fiscal Year-To-Date collections, refunds and credits, and collections less refunds and credits are also provided, along with the percent change between the two years. Refund claims can be filed throughout the year, while credits are claimed only once a year on annual income tax returns.

Comparing monthly numbers across the last 24 months, Figure 1 shows that net collections in December 2013 were above the December 2012 amount as a result of increases in gasohol and diesel collections and despite a slight decrease in collections for gasoline. Monthly collections were higher than prior year numbers in six of the last twelve months.

**Figure 1. Iowa Monthly Fuel Tax Collections Less Refunds and Credits:
Most Recent 12 Months Compared to Prior 12 Months for December 2013**



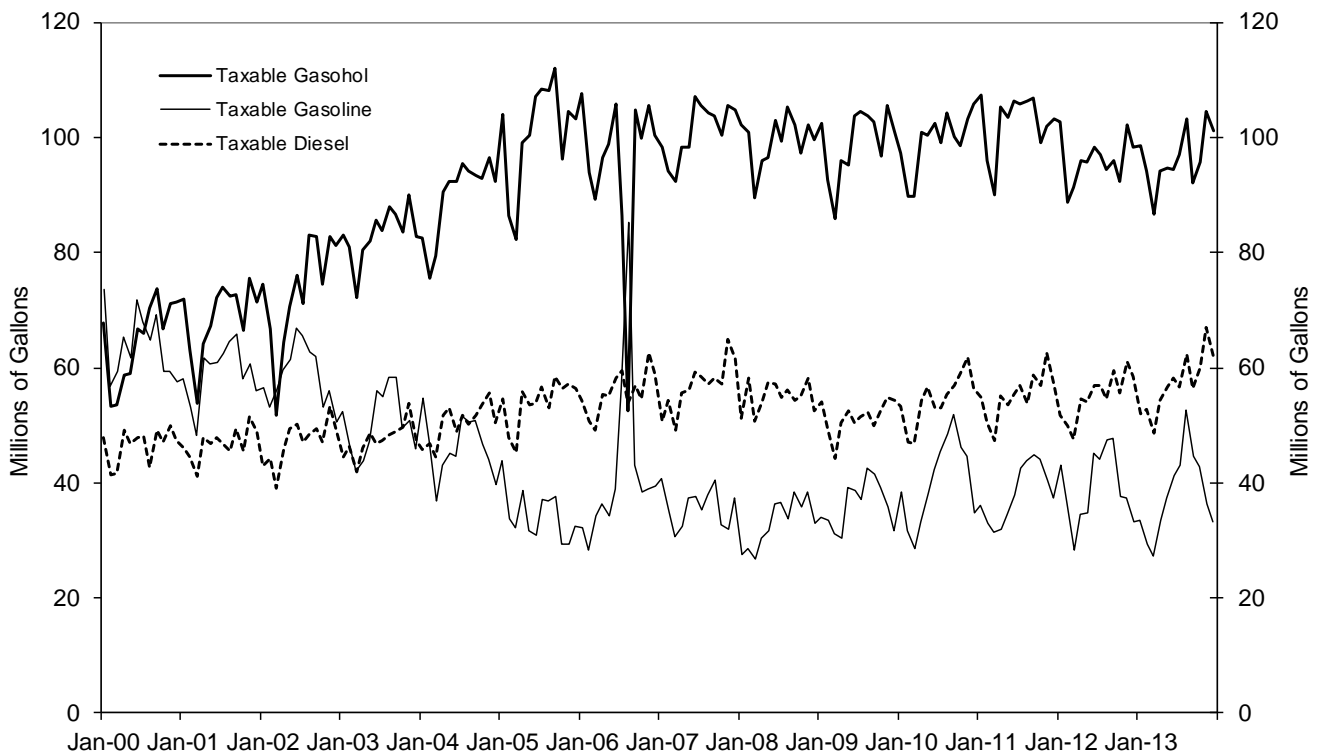
Source: Iowa Department of Revenue

The second page of the report displays gross gallons and taxable gallons by fuel type for Motor Fuel, Special Fuel, and Liquefied Petroleum Gas & Compressed Natural Gas. (CNG is reported in the taxable units of 100 cubic feet, or CCF, instead of gallons. To convert CCF to gallons, multiply CCF by 1.2667.) The main factor in the difference between gross and taxable amounts is exported gallons - where Iowa exports well over half of the gasohol (ethanol-blended fuel) produced in the state.

The gallon amounts contained in this report are from the Supplier/Terminal or "Rack" level. Further blending of the products may occur throughout the different levels of the fuel distribution chain. This is the case for most E85 gallons, which is why the gallons reported do not reflect actual retail gallons sold in Iowa. Please see the quarterly E85 retail report for those amounts, located on the website previously referenced.

In 2000, taxable sales of gasohol and gasoline were roughly equal. Figure 2 shows that over the next six years, demand shifted toward gasohol sales which rose to over two-thirds of gallons sold, except for August 2006 when a temporary price shift drove a brief change in demand. Since 2007, gasohol has accounted for a monthly average of 73 percent of taxable gallons of motor fuel. In December 2013, gasohol accounted for 75 percent of taxable gallons of motor fuel sold. Annual total taxable motor fuel gallons increased just 0.4 percent in the decade between 2003 and 2013 while annual taxable diesel gallons increased 20 percent. During this period, taxable gasohol gallons increased 16 percent and taxable gasoline gallons decreased by 25 percent.

Figure 2. Iowa Monthly Taxable Gasohol, Gasoline, and Diesel Gallons: January 2000 - December 2013



Source: Iowa Department of Revenue

The report also shows a breakdown of the refund dollar amounts by claim type for the month. Refunds are claimed against taxes paid on fuel that is used for non-taxable purposes, such as agricultural or commercial non-highway uses. Refunds are also claimed for Excess Tax on Gasohol and Denaturing Alcohol. The excess tax on gasohol refund results when the blender purchases gasoline taxed at 21 cents per gallon and collects tax on the resulting gasohol at 19 cents per gallon; therefore, the additional 2 cents paid on the gasoline is eligible for refund. The denaturing alcohol refund applies when the denaturant (gasoline) taxed at 21 cents per gallon is blended with food grade alcohol to produce ethanol. A full refund of the denaturant is eligible for a refund. When a refund of Iowa fuel tax is granted, those gallons become subject to Iowa sales tax, unless a sales tax exemption applies. Sales tax collected on those gallons is included at the bottom of the second page.

Iowa Department of Revenue
Fuel Tax Monthly Report
For Gallons Reported on Returns Filed in December 2013

MOTOR FUEL

Detailed Collections	Gasoline	Gasohol	E85	Aviation Gasoline	
	\$6,969,116	\$19,174,936	\$53,290	\$10,441	
Collections	Total Remitted	\$26,207,783			
Permit Refunds	Total Refunded	\$2,407,824			
		Current Month	Fiscal YTD	Prior FYTD	Change
Collections Less Permit Refunds		\$23,799,959	\$152,884,928	\$151,659,849	0.81%

SPECIAL FUEL

Detailed Collections	Aviation Jet	Diesel			
	\$84,698	\$13,866,347			
Collections	Total Remitted	\$13,951,045			
Permit Refunds	Total Refunded	\$222,153			
		Current Month	Fiscal YTD	Prior FYTD	Change
Collections Less Permit Refunds		\$13,728,892	\$80,291,237	\$77,434,596	3.69%

LPG, LNG and CNG

Detailed Collections	LPG	LNG	CNG		
	\$12,979	\$0	\$6,742		
Collections	Total Remitted	\$19,721			
Permit Refunds	Total Refunded	\$230			
		Current Month	Fiscal YTD	Prior FYTD	Change
Collections Less Permit Refunds		\$19,491	\$121,110	\$96,424	25.60%

MISC. & ACCOUNTS RECEIVABLE

Detailed Collections	Miscellaneous	Accounts Receivable			
	\$0	\$150			
Collections	Total Remitted	\$150			
		Current Month	Fiscal YTD	Prior FYTD	Change
Misc. & Account Receivable		\$150	\$2,118	\$12,232	-82.68%

TOTAL

Collections	Current Month	Fiscal YTD	Prior FYTD	Change
	\$40,178,699	\$244,458,202	\$242,536,755	0.79%
Refunds				
Permit Refunds Including Interest	\$2,630,207			
Motor Fuel Individual/Corporate Credits	\$29,507			
Total Refunds and Credits	\$2,659,714	\$13,508,100	\$13,564,598	-0.42%
Collections Less Permit Refunds and Credits	\$37,518,984	\$230,950,101	\$228,972,157	0.86%

Iowa Department of Revenue
Fuel Tax Monthly Report
For Gallons Reported on Returns Filed in December 2013

MOTOR FUEL GALLONS SUMMARY

	Gasoline	Gasohol	E85*	Aviation Gas	Motor Fuel Total
Gross Gallons Received	39,242,685	252,802,915	327,768	132,393	292,505,761
Exported Gallons	5,485,583	150,153,975	43,181	0	155,682,739
Distribution Allowance	535,111	1,619,530	3,679	1,809	2,160,129
Total Taxable Gallons	33,221,991	101,029,410	280,908	130,584	134,662,893
Remitted	\$6,969,116	\$19,174,936	\$53,290	\$10,441	\$26,207,783

*E85 gallons are not actual retail gallons. See quarterly E85 retail report for actual gallons

SPECIAL FUEL GALLONS SUMMARY

	Aviation Jet	Diesel	Special Fuel Total
Gross Gallons Received	3,319,953	79,051,293	82,371,246
Exported Gallons	477,119	16,938,435	17,415,554
Distribution Allowance	16,819	418,221	435,040
Total Taxable Gallons	2,826,015	61,694,637	64,520,652
Remitted	\$84,698	\$13,866,347	\$13,951,045

LPG, LNG and CNG SUMMARY

	LPG Gallons	LNG Gallons	CNG 100 Cubic Ft.
Total Taxable Units	64,915	0	42,141
Remitted	\$12,979	\$0	\$6,742

REFUND SUMMARY

DOLLARS

Number of Claims	Permit Type	Motor Fuel	Special Fuel	LPG	Interest Paid	Total
51	Agricultural	5,652	15,855	0	0	21,507
6	Federal Government	49,383	3,614	0	0	52,996
10	State Government	136,261	6,384	0	0	142,645
97	Other Political	118,366	26,574	230	0	145,170
0	Native American	0	0	0	0	0
0	Contract Carrier	0	0	0	0	0
0	Commercial Fisherman	0	0	0	0	0
0	Home Heating	0	0	0	0	0
2	Extract of Nat'l Deposits	77	0	0	0	77
42	Denaturing Alcohol	1,622,377	0	0	0	1,622,377
74	Commercial	83,814	153,963	0	0	237,777
0	Refund Agent	0	0	0	0	0
4	Transport Diversions	47,637	14,714	0	0	62,351
0	Casualty Losses	0	0	0	0	0
2	Special Fuel Blending	0	1,049	0	0	1,049
10	Excess Tax on Gasohol	343,417	0	0	1	343,418
3	Excess Tax on E85	840	0	0	0	840
301	TOTALS	\$2,407,824	\$222,153	\$230	\$1	\$2,630,207

GALLONS USED IN A MANNER EXEMPT FROM FUEL TAX

Sales Tax \$160,547