



## CATTLE ON FEED

### IN THIS ISSUE

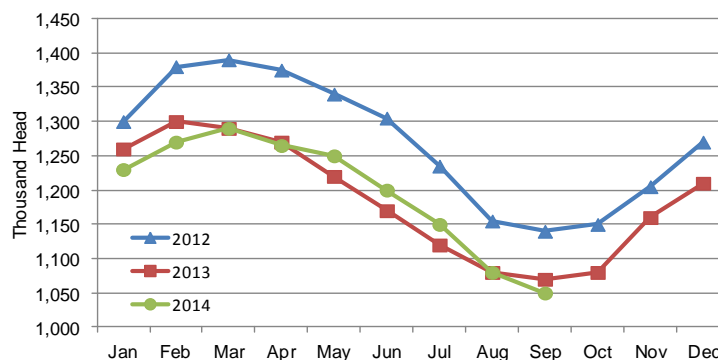
*Cattle on Feed  
Milk Production  
Chickens & Eggs*

**Cattle and calves on feed** for slaughter market in Iowa for all feedlots totaled 1,050,000 on September 1, 2014 according to the USDA, National Agricultural Statistics Service, Iowa Field Office. The inventory is down 3 percent from August 1, 2014 and down 2 percent from September 1, 2013. Feedlots with a capacity greater than 1,000 head had 580,000 head on feed, down 3 percent from last month but up 5 percent from last year. Feedlots with a capacity less than 1,000 head had 470,000 head on feed, down 2 percent from last month and down 10 percent from last year.

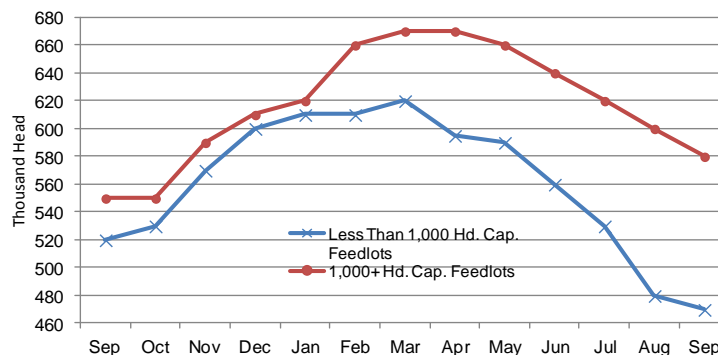
**Placements** during August totaled 120,000 head, an increase of 26 percent from last month but down 14 percent from last year. Feedlots with a capacity greater than 1,000 head placed 63,000 head, up 13 percent from last month but down 5 percent from last year. Feedlots with a capacity less than 1,000 head placed 57,000 head. This is up 46 percent from last month but down 22 percent from last year.

**Marketings** for August were 143,000 head, down 11 percent from last month but up 1 percent from last year. Feedlots with a capacity greater than 1,000 head marketed 80,000 head, up 8 percent from last month and up 10 percent from last year. Feedlots with a capacity less than 1,000 head marketed 63,000 head, down 27 percent from last month and down 9 percent from last year. **Other disappearance** totaled 7,000 head.

**Cattle on Feed, Inventory on all Feedlots, Iowa:  
2012-2014**



**Cattle on Feed, Inventory by Feedlot Capacity, Iowa:  
Current Month & Past 12 Months**



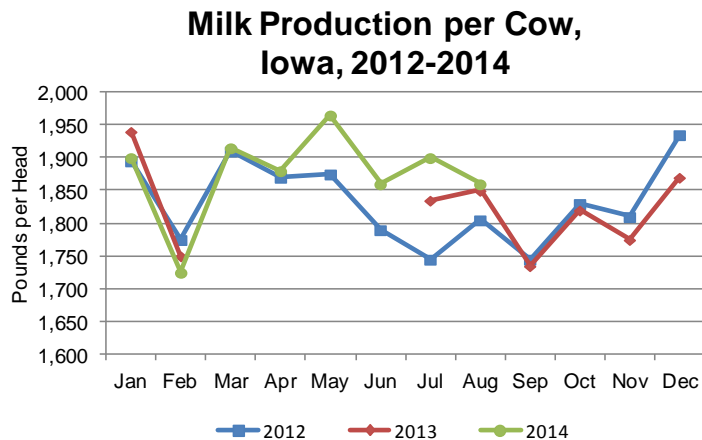
### All Cattle on Feed, Iowa

Item	Lots 1,000+ Head (1,000 Head)	Lots Less than 1,000 Head (1,000 Head)	All Lots (1,000 Head)
Cattle on Feed, August 1, 2014 .....	600	480	1,080
August Placements .....	63	57	120
August Marketings .....	80	63	143
August Other Disappearance .....	3	4	7
Cattle on Feed, September 1, 2014 .....	580	470	1,050

The complete report can be found under **Publications** on the USDA NASS website at [www.nass.usda.gov](http://www.nass.usda.gov).

## MILK PRODUCTION

**Milk production** in Iowa during August 2014 totaled 387 million pounds, up less than 1 percent from August 2013 according to the USDA, National Agricultural Statistics Service – *Milk Production* report. The average number of milk cows during August, at 208,000 head, was unchanged from both last month and a year ago. Monthly production per cow averaged 1,860 pounds in August 2014, up 10 pounds from last August.



## CHICKENS & EGGS

**Egg production** in Iowa during August 2014 was 1.39 billion eggs, up 1 percent from last month, and up 3 percent from last year, according to the latest *Chickens and Eggs* release from USDA's National Agricultural Statistics Service.

The total number of layers on hand during August was 58.7 million, up 1 percent from last month, and up 2 percent from the 57.7 million last year. Eggs per 100 layers for the month of August were 2,370, down fractionally from last month, but up 1 percent from 2,351 last year.

### Layers on Hand and Eggs Produced – States and United States, August 2013 and 2014

[Data may not add to totals due to rounding. Data by type of flock not shown for some states to avoid disclosing individual operations, data included in United States totals.]

State	Table egg layers in flocks 30,000 & above		All layers on hand		Eggs per 100 layers		Total egg production		Table egg production	
	2013	2014	2013	2014	2013	2014	2013	2014	2013	2014
	(1,000 layers)	(1,000 layers)	(1,000 layers)	(1,000 layers)	(eggs)	(eggs)	(million eggs)	(million eggs)	(million eggs)	(million eggs)
Alabama .....	1,305	1,508	9,019	9,097	2,007	1,979	181	180	30	36
Arkansas .....	3,660	3,620	12,584	12,931	2,066	2,096	260	271	88	91
California .....	17,525	15,429	17,880	15,961	2,433	2,349	435	375	(D)	(D)
Colorado .....	4,216	4,537	4,667	4,888	2,571	2,516	120	123	(D)	(D)
Connecticut .....	2,280	2,280	2,369	2,369	2,533	2,533	60	60	(D)	(D)
Florida .....	7,653	8,185	7,986	8,550	2,254	2,327	180	199	176	193
Georgia .....	8,814	9,339	17,544	17,997	2,155	2,173	378	391	207	221
Illinois .....	3,880	4,093	4,189	4,406	2,411	2,497	101	110	96	105
Indiana .....	25,719	26,532	26,667	27,495	2,344	2,346	625	645	606	626
<b>Iowa .....</b>	<b>56,734</b>	<b>57,709</b>	<b>57,727</b>	<b>58,686</b>	<b>2,351</b>	<b>2,370</b>	<b>1,357</b>	<b>1,391</b>	<b>1,340</b>	<b>1,375</b>
Maine .....	3,445	3,445	3,500	3,500	2,286	2,286	80	80	(D)	(D)
Maryland .....	2,250	2,595	2,373	2,719	2,402	2,464	57	67	55	65
Michigan .....	12,810	12,679	12,962	12,833	2,492	2,548	323	327	(D)	(D)
Minnesota .....	9,861	10,608	10,307	11,018	2,406	2,405	248	265	241	258
Mississippi .....	1,579	1,397	5,878	5,505	2,042	2,016	120	111	38	34
Missouri .....	6,112	6,619	7,621	8,209	2,506	2,412	191	198	(D)	(D)
Nebraska .....	9,206	9,422	9,256	9,472	2,517	2,587	233	245	233	245
New York .....	4,213	4,541	4,438	4,767	2,456	2,496	109	119	(D)	(D)
North Carolina .....	5,832	6,073	13,029	13,617	2,088	2,100	272	286	139	147
Ohio .....	28,178	29,907	28,656	30,486	2,352	2,434	674	742	(D)	(D)
Oregon .....	2,188	2,237	2,283	2,307	2,628	2,687	60	62	59	62
Pennsylvania .....	23,766	23,938	24,927	25,023	2,503	2,518	624	630	602	611
South Carolina .....	3,103	2,987	4,360	4,185	2,225	2,103	97	88	74	67
South Dakota .....	2,639	2,519	2,679	2,559	2,501	2,462	67	63	67	63
Texas .....	14,567	14,668	18,445	18,496	2,288	2,319	422	429	(D)	(D)
Utah .....	3,887	4,303	3,917	4,333	2,451	2,469	96	107	96	107
Virginia .....	1,184	1,201	2,824	2,913	2,018	2,128	57	62	25	30
Washington .....	6,814	6,829	6,932	6,947	2,380	2,418	165	168	(D)	(D)
Wisconsin .....	4,476	4,250	5,058	4,913	2,372	2,402	120	118	(D)	(D)
Other States <sup>1</sup> .....	12,894	12,871	20,808	21,245	2,240	2,241	466	476	338	341
<b>United States .....</b>	<b>290,790</b>	<b>296,321</b>	<b>350,885</b>	<b>357,427</b>	<b>2,331</b>	<b>2,347</b>	<b>8,178</b>	<b>8,388</b>	<b>7,091</b>	<b>7,292</b>

- Represents zero. (D) Withheld to avoid disclosing data for individual operations. <sup>1</sup> Includes data for states not published in this table.