



IN THIS ISSUE

*Cattle on Feed
Milk Production
Chicken & Eggs*

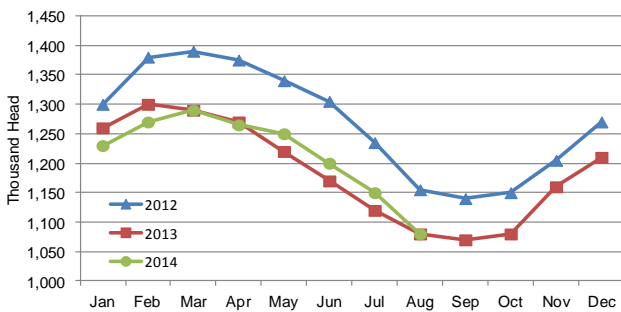
CATTLE ON FEED

Cattle and calves on feed for slaughter market in Iowa for all feedlots totaled 1,080,000 on August 1, 2014, according to the USDA, National Agricultural Statistics Service, Iowa Field Office. The inventory is down 6 percent from July 1, 2014, but unchanged from August 1, 2013. Feedlots with a capacity greater than 1,000 head had 600,000 head on feed, down 3 percent from last month but up 7 percent from last year. Feedlots with a capacity less than 1,000 head had 480,000 head on feed, down 9 percent from last month and down 8 percent from last year.

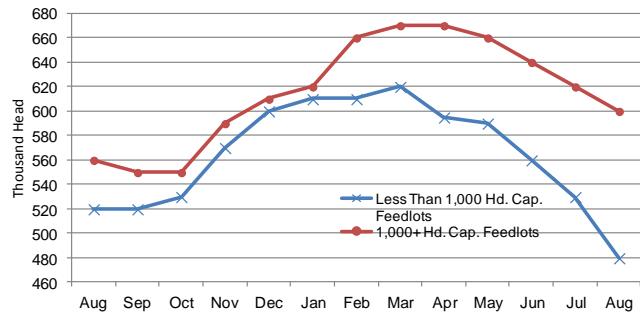
Placements during July totaled 95,000 head, an increase of 1 percent from last month but down 9 percent from last year. Feedlots with a capacity greater than 1,000 head placed 56,000 head, up 4 percent from last month and up 17 percent from last year. Feedlots with a capacity less than 1,000 head placed 39,000 head. This is down 2 percent from last month and down 30 percent from last year.

Marketings for July were 160,000 head, up 16 percent from last month and up 17 percent from last year. Feedlots with a capacity greater than 1,000 head marketed 74,000 head, up 6 percent from last month and up 16 percent from last year. Feedlots with a capacity less than 1,000 head marketed 86,000 head, up 26 percent from last month and up 18 percent from last year. **Other disappearance** totaled 5,000 head.

**Cattle on Feed, Inventory on all Feedlots, Iowa:
2012-2014**



**Cattle on Feed, Inventory by Feedlot Capacity, Iowa:
Current Month & Past 12 Months**



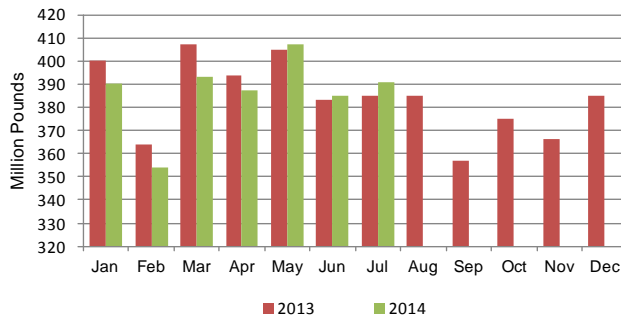
All Cattle on Feed, Iowa

Item	Lots 1,000+ Head	Lots Less than 1,000 Head	All Lots
	(1,000 head)	(1,000 head)	(1,000 head)
Cattle on Feed, July 1, 2014	620	530	1,150
July Placements	56	39	95
July Marketings	74	86	160
July Other Disappearance	2	3	5
Cattle on Feed, August 1, 2014	600	480	1,080

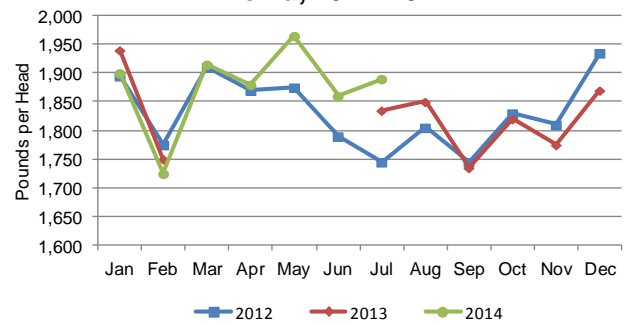
MILK PRODUCTION

Milk production in Iowa during July 2014 totaled 391 million pounds, up 2 percent from July 2013 according to the USDA, National Agricultural Statistics Service – *Milk Production* report. The average number of milk cows during July, at 207,000 head, was unchanged from last month, but 3,000 fewer than a year ago. Monthly production per cow averaged 1,890 pounds in July 2014, up 55 pounds from last July.

Milk Production, Iowa, 2013-2014



Milk Production per Cow, Iowa, 2012-2014

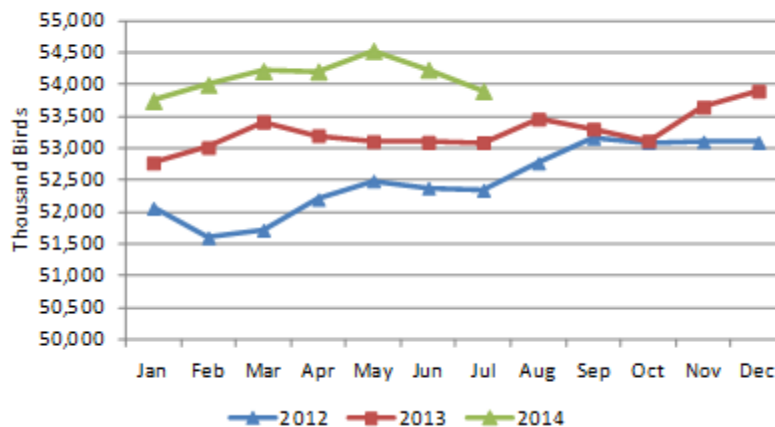


CHICKEN & EGGS

Egg production in Iowa during July 2014 was 1.28 billion eggs, up 3 percent from last month, and up 3 percent from last year, according to the latest *Chickens and Eggs* release from USDA's National Agricultural Statistics Service.

The total number of layers on hand during July was 53.9 million, down 1 percent from last month, but up 2 percent from the 53.1 million last year. Eggs per 100 layers for the month of July were 2,375, up 3 percent from last month, and up 1 percent from 2,343 last year.

All Layers on Hand, Iowa, 2012-2014



The complete report can be found under **Publications** on the USDA NASS website at www.nass.usda.gov.