

# A d d e n d u m

Iowa Department of Transportation  
Office of Contracts

Date of Letting: August 19, 2014  
Date of Addendum: August 13, 2014

<b>B.O.</b>	<b>Proposal ID</b>	<b>Proposal Work Type</b>	<b>County</b>	<b>Project Number</b>	<b>Addendum</b>
006	57-C057-113	RCB CULVERT NEW - SINGLE BOX	LINN	STP-E-C057(113)--8V-57	19AUG006.A03

Make the following change to the plan:

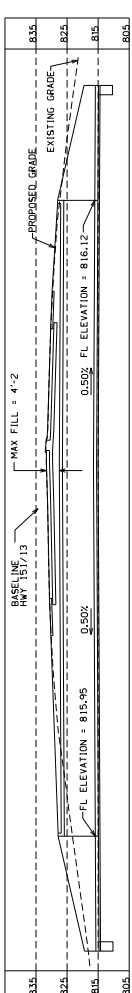
Replace plan sheet V.01 with attached plan sheet V.01

Changes include:

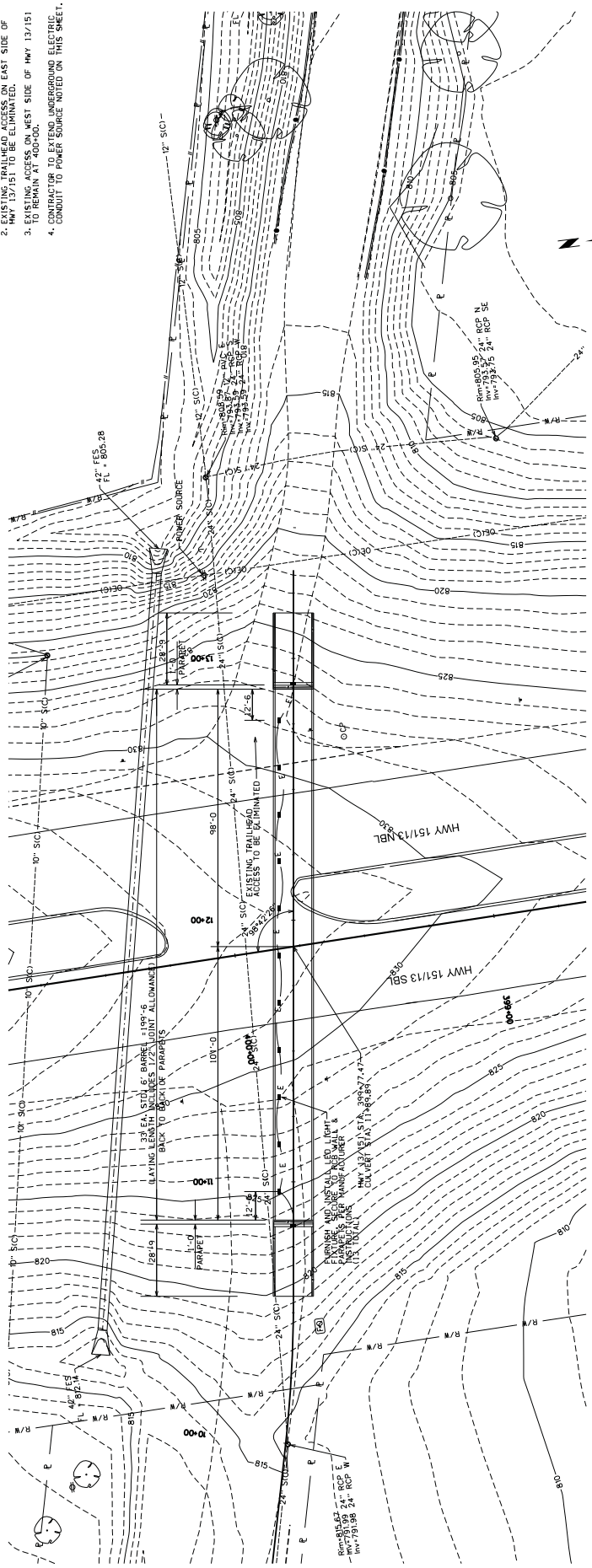
- Illustrate the layout of 13 LED light fixtures on the RCB north wall and parapets.
- Callout identifying the fixtures
- Identify the Power Source
- Added Plan Note 4

**LOCATION**  
 HWY 13/151, 0.5 MILES SOUTH  
 OF INTERSECTION HWY 13 AND HWY 151  
 T-83-N, P.06-W  
 SECTION 4  
 LAT. 42.0282  
 LONG. -91.2502

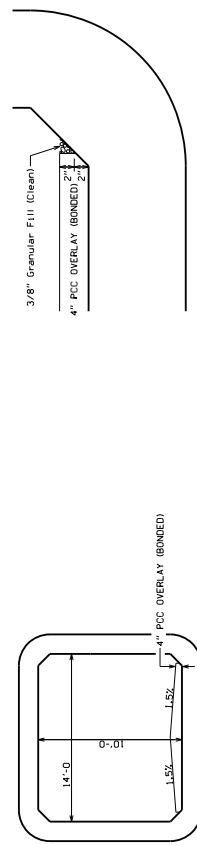
- PLAN NOTES:**
1. PROPOSED CULVERT FOR PRECAST MAN ACCESS ONLY. THE CULVERT WILL NOT CARRY STORMWATER.
  2. EXISTING TRAILHEAD ACCESS ON EAST SIDE OF HWY 13/151 TO BE ELIMINATED.
  3. EXISTING ACCESS ON WEST SIDE OF HWY 13/151 TO REMAIN AT 400+00.
  4. CONTRACTOR TO EXTEND UNDERGROUND ELECTRIC UTILITY CONDUIT TO POWER SOURCE NOTED ON THIS SHEET.



LONGITUDINAL SECTION ALONG C OF CULVERT



SITUATION PLAN



BONDED OVERLAY EDGE TREATMENT

TYPICAL BARREL - END VIEW

DESIGN FOR 0° SKIRM  
 PRECAST  
 SINGLE 14'X10'X199.5'  
 REINFORCED CONC. BOX CULVERT  
 SITUATION PLAN  
 STA. 398+75.00 DATE: 4/15/2014  
 LINN COUNTY  
 IOWA DEPARTMENT OF TRANSPORTATION - HIGHWAY DIVISION  
 DESIGN SHEET NO. 1 OF 2 FILE NO. 2114 DESIGN NO. 31861

ENGLISH	8/12/2014	MA\2012_PROJECTS\120183_LinnCo_Hwy13_Underpass\Cadd\c120183.v01	SNYDER & ASSOCIATES	PROJECT NUMBER	STP-E-C057(113) - 8V-57	PROJECT NUMBER	STP-E-C057(113) - 8V-57	SHEET NUMBER	V.01	SYDNER
ENGLISH	8/12/2014	MA\2012_PROJECTS\120183_LinnCo_Hwy13_Underpass\Cadd\c120183.v01	SNYDER & ASSOCIATES	PROJECT NUMBER	STP-E-C057(113) - 8V-57	PROJECT NUMBER	STP-E-C057(113) - 8V-57	SHEET NUMBER	V.01	SYDNER