

Graduate College Appoints New Dean

The Graduate College is pleased to announce the appointment of Minnetta Gardinier, Ph.D., as the Associate Dean for Recruitment and Professional Development. Minnetta Gardinier is an Associate Professor in the Department of Pharmacology in the Carver College of Medicine and currently serves as Director of the Interdisciplinary Graduate Program in Molecular and Cellular Biology. Her appointment began February 1, 2006.

As part of her duties, Dr. Gardinier will oversee programs and activities designed to enhance the recruitment, retention and professional development of over 5,000 graduate students in approximately 100 programs across the University.

She will work with a dedicated staff in the Office of Graduate Ethnic Inclusion to improve the level of diversity, both within individual graduate programs and across the Graduate College. She will also serve on the dean's administrative staff to assist in the planning and implementation of the strategic goals of The University of Iowa related to graduate education and research.

Research

Dr. Gardinier's lab focuses on studies of myelin, the sheath that surrounds nerve fibers. Among other goals, her research aims to help those who suffer from multiple sclerosis (MS), the #1 neurological disease affecting young adults where myelin is specifically targeted for destruction.

Academic training

- LeMoyne College (Syracuse, NY) – B.S. in Biology (1975)
- Louisiana State University Medical Center (New Orleans, LA) – Ph.D. in Biochemistry & Molecular Biology (1988)
- Centre Hospitalier Universitaire Vaudois (Lausanne, Switzerland) – postdoctoral training in molecular neurobiology (1989-1992)
- Northwestern University Medical School (Chicago, IL) – Assistant Professor of Pathology (1992-1998)
- University of Iowa – Associate Professor of Pharmacology (1998-present)



Dr. Gardinier, Associate Dean of Recruitment and Professional Development for the Graduate College.



Prospective graduate students participate in panel discussions with UI faculty and graduate students this past fall. As part of the event, students also toured facilities of their programs of interest, met with faculty mentors, and spoke with current graduate students.

RECRUITMENT AND PROFESSIONAL DEVELOPMENT AT THE GRADUATE COLLEGE

- Teaching Certificate Program
- Interdisciplinary study opportunities
- Emphasis on mentoring
- Travel funds for conferences, both domestic and international
- Summer Research Opportunities Program (SROP) see page 3 in this newsletter for more information about SROP
- Office of Graduate Ethnic Inclusion (OGEI)
- Iowa Biosciences Advantage (IBA)
- Alliance for Graduate Education and Professoriate (AGEP)

FUTURE INITIATIVES

- Enhance strategies to recruit outstanding and well-qualified students
- Build on best practices to increase diversity on our campus, based on our successful AGEPE, SROP, and IBA programs.
- Implement new professional development programs for current graduate students to help further their success in the job market.

INSIDE THIS ISSUE

Graduate College snapshot	2
Letter from Dean John Keller	3
Thanks from SROP scholars	3
Support the Graduate College.....	4

Graduate College Snapshot

Graduate students are the lifeblood of top research institutions like The University of Iowa. Graduate students are faculty and researchers in training; they will be the conduit for research, learning, and discovery for our next generation. They work with faculty to carry out research, their inquiries result in new discoveries, and they greatly enrich undergraduate education. Their research studies will provide the foundation for advancements in many fields, helping to improve our lives.

Ever wonder how “the experts” know what they know? Chances are they went to graduate school. Students and faculty in doctoral and master’s research programs produce practical solutions that resonate in our daily lives. Meet a few of our scholars and learn about how they help us.

How does my child learn so many words so quickly?

Jessica Horst, Psychology

Larissa Samuelson, Thesis Advisor

Research focus: Understanding how young children learn words, particularly how they link a novel name to a novel object.



I’ve heard of total wrist replacement for people with rheumatoid arthritis and other conditions. What are some of the advantages of this procedure compared to other procedures?

Matthew McCullough, Biomedical Engineering

Nicole M. Grosland, Thesis Advisor

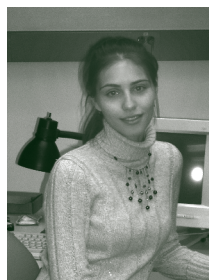
Research focus: Design of a new total wrist arthroplasty device.

How is cancer research progressing? They say early detection is important, but how do researchers develop the tools to do that?

Yulia Skvortsova, Analytical Chemistry

Lei Geng, Thesis Advisor

Research focus: Laser-induced auto-fluorescence of tissues for the purpose of non-invasive cancer diagnosis



Graduate College Establishes the L.B. Sims Outstanding Master’s Thesis Award

In recognition of contributions to The University of Iowa and to graduate education nationwide, the Graduate College has established the L.B. Sims Outstanding Master’s Thesis Award.

Leslie B. Sims was Graduate College Dean, Associate Provost for Graduate Education, and Vice Provost at The University of Iowa (1991-2001). He went on to national-level work with the Council of Graduate Schools (CGS) in Washington, D.C. (2001-2006) as Dean-in-residence, a position from which he recently retired. While at CGS, he focused on the Ford and Sloan funded Professional Master’s Projects and has just completed a book on the professional master’s degree.

This award recognizes and rewards distinguished scholarship and research at the master’s level.

GRADUATE College

205 Gilmore Hall
The University of Iowa
Iowa City IA 52242

www.grad.uiowa.edu
gradcoll@uiowa.edu
319-335-2144

John C. Keller, PhD

Professor, College of Dentistry
Associate Provost and Dean
335-2142 | john-keller@uiowa.edu

Caroline Mast

Assistant to Dean Keller
335-2142 | caroline-mast@uiowa.edu

Dale Eric Wurster, PhD

Associate Dean
Professor, College of Pharmacy
335-2137 | dale-e-wurster@uiowa.edu

Eunice Prosser

Assistant to Dean Wurster
335-2137 | eunice-prosser@uiowa.edu

Sandra Barkan, PhD

Associate Dean
Adjunct Assistant Professor, Cinema
and Comparative Literature
and International Studies
335-3492 | sandra-barkan@uiowa.edu

Kathy Klein

Assistant to Dean Barkan
335-2136 | kathy-klein@uiowa.edu

Chris Morgan

General Graduate College Information
335-2144 | d-morgan@uiowa.edu

SUPPORT UI GRADUATE SCHOLARS

Helps Students with:

- Travel to conferences and professional meetings
 - Training in college teaching
 - Research-related funding
- To help fund a graduate student at Iowa, contact:

Rich Wretman

Assistant Vice President, Constituent
Development Programs
The University of Iowa Foundation
P.O. Box 4550
Iowa City, Iowa 52244-4550
(319) 335-3305 | (800) 648-6973
rich-wretman@uiowa.edu

Letter from the Dean

Thanks in part to generous contributions from alumni and friends of UI graduate education, the Graduate College has increased the number of Summer Fellowships and travel grants it will offer in 2006-2007.

The Graduate College will fund 75 Summer Fellowships (up from 40), and funding for travel grants will also increase in 2006-2007. The Summer Fellowships enable our scholars to continue research efforts over the summer. Travel funds defray the costs of presenting papers and posters at professional conferences where our researchers have the opportunity to exchange ideas and confer with colleagues worldwide.

Research is the center of graduate education at Iowa, and our researchers help solve real-world problems. A few examples noted from the profiles in this newsletter:

Multiple sclerosis (Department of Pharmacology and the Interdisciplinary Graduate Programs in Molecular & Cellular Biology and Neuroscience), **Childhood language development** (Department of Psychology), **Rheumatoid arthritis** (Biomedical Engineering program), **Development of cancer diagnostic tools** (Department of Chemistry)

Ongoing support for graduate education is the key to research innovations that will have a lasting impact in Iowa and beyond.

With our thanks for your support,

John C. Keller

Associate Provost for Graduate Education

Dean of the Graduate College



THANKS FROM FORMER SROP SCHOLARS

I am a strong supporter of the SROP/CIC programs. I have decided to attend my SROP host institution, and our lab is expecting to have our SROP student of 2004 join in the fall as a graduate student as well. This program and system REALLY work. It has been a personal success, for myself as well as my lab. Let's keep up the good work!!

Thank you!

Amy Jo Marcano-Reik

Graduate Student in Psychology—Behavioral and Cognitive Neuroscience

The University of Iowa

I'm an Iowa Alum who took part in the SROP program in 1992 and 1995. I went on to receive my MA in biological anthropology from the University of Massachusetts Amherst with distinction, and I am one of a handful of minority Ph.D. candidates in biological anthropology nationwide. I'm in the process of applying for tenure track teaching positions, and I have been writing about the benefits of my CIC SROP experiences in my application letters.

The SROP program not only made me competitive for grad school, it showed me that I could become a teacher and researcher... The foundation of my successes lies with the University of Iowa, the CIC SROP program, and you and your staff.

Thanks for giving me a chance to succeed.

Ventura R. Perez

Instructor, UMass Honors College

Visiting Assistant Professor, Biological Anthropology, Hampshire College

Ph.D. Candidate, Biological Anthropology UMass

The Graduate College hosts the UI's **Summer Research Opportunities Program (SROP)**, an award-winning program designed to increase the number of top graduate scholars at Iowa from groups historically underrepresented in the humanities, arts, social sciences, engineering, and physical and natural sciences. For more information, visit <http://www.grad.uiowa.edu/students/SROP>

Graduate College News

Jennifer Masada, editor, writer

Warren Staal, designer

Graduate College News is published in the fall and spring. On the web:

www.grad.uiowa.edu

The University of Iowa prohibits discrimination in employment, educational programs, and activities on the basis of race, national origin, color, creed, religion, sex, age, disability, veteran status, sexual orientation, gender identity, or associational preference. The University also affirms its commitment to providing equal opportunities and equal access to University facilities. For additional information contact the Office of Equal Opportunity and Diversity, (319) 335-0705.

Printed by UI Printing Department 57667/04-06



THE UNIVERSITY OF IOWA

Graduate College
205 Gilmore Hall
Iowa City IA 52242

Nonprofit Organization

U.S. Postage

PAID

Permit No. 45

Iowa City IA

REMINDERS

- Gifts to the UI Foundation, a channel preferred by The University of Iowa for private support, qualify as charitable contributions to an IRC Sec. 501(c)(3) organization for federal income, estate and gift tax purposes.
- Contributors of \$100 or more to the Graduate College are recognized in *Graduate College News*.

GRADUATE College FUND

HERE'S MY CHECK OR CREDIT CARD AUTHORIZATION FOR A GIFT TO

- The Graduate College General Fund (30-250-000) 2006 GCNA
- Other _____

YES, I WANT TO SUPPORT GRADUATE COLLEGE PROGRAMS

Name _____

Address _____

City, State, Zip _____

Social Security number *(optional/confidential)* _____

I WANT TO SHARE RECOGNITION FOR MY GIFT WITH MY:

Spouse *Print preferred title and name* _____

Domestic partner* *Print preferred title and name* _____

Spouse's/domestic partner's Social Security number *(optional/confidential)* _____

**For this purpose, domestic partner is your spousal equivalent rather than a sibling, parent, child, etc.*

Please make your check payable to The University of Iowa Foundation. Please mark changes to your title (Mr., Mrs., Ms., no title, other), name, or address and return this form.

CREDIT CARD INFORMATION

Credit card number _____

MasterCard VISA Discover

American Express

Expiration date *(mm/yy)* _____

Signature _____

PLEASE CLIP OUT THIS FORM AND MAIL YOUR CONTRIBUTION TO THE FOLLOWING ADDRESS

Graduate College Fund
The University of Iowa Foundation
Levitt Center for University Advancement
PO Box 4550
Iowa City, Iowa 52244-4550
319-335-3305 / 800-648-6973
Email: uiowa-foundation@uiowa.edu

MAKE A GIFT ONLINE TODAY! www.givetoioa.org/graduate