



USDA
National Agricultural Statistics Service
Upper Midwest Region – Iowa Field Office
nassrfourm@nass.usda.gov
www.nass.usda.gov

Iowa AgriNews

Vol 14-03

Jan. 27, 2014

CATTLE ON FEED

Cattle and calves on feed for slaughter market in Iowa for all feedlots totaled 1,370,000 on January 1, 2014 according to the USDA, National Agricultural Statistics Service, Iowa Field Office. The inventory is up 3 percent from December 1, 2013 and up 7 percent from January 1, 2013. Feedlots with a capacity greater than 1,000 head had 620,000 head on feed, up 2 percent from last month but unchanged from last year. Feedlots with a capacity less than 1,000 head had 750,000 head on feed, up 3 percent from last month and up 14 percent from last year.

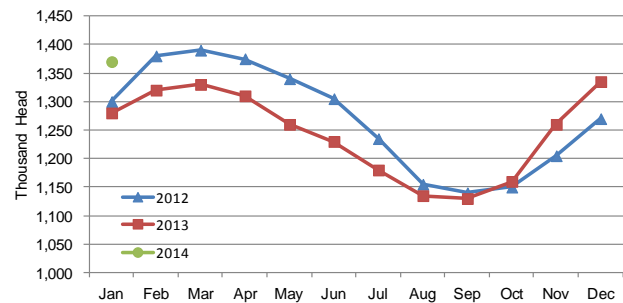
Placements during December totaled 206,000 head, a decrease of 25 percent from last month but up 27 percent from last year. Feedlots with a capacity greater than 1,000 head placed 96,000 head, down 21 percent from last month but up 17 percent from last year. Feedlots with a capacity less than 1,000 head placed 110,000 head. This is down 29 percent from last month but up 38 percent from last year.

Marketings for December were 164,000 head, down 16 percent from last month but up 14 percent from last year. Feedlots with a capacity greater than 1,000 head marketed 84,000 head, down 16 percent from last month but up 24 percent from last year. Feedlots with a capacity less than 1,000 head marketed 80,000 head, down 16 percent from last month but up 5 percent from last year. Other disappearance totaled 7,000 head.

IN THIS ISSUE

*Cattle on Feed
Milk Production
Oat County
Estimates*

**Cattle on Feed, Inventory on all Feedlots, Iowa:
2012-2014**



Cattle on Feed: Number on Feed, Placements, Marketings, and Other Disappearance by Month, 1,000+ Capacity Feedlots [Cattle and calves on feed are animals for slaughter market being fed a ration of grain or other concentrates and are expected to produce a carcass that will grade select or better.]

State	Cattle on Feed January 1			Placements during December			Marketings during December			December Disappearance other than Slaughter ¹		
	2013	2014	'14 as % of '13	2012	2013	'13 as % of '14	2012	2013	'13 as % of '14	2012	2013	'13 as % of '14
	(1,000 Head)	(1,000 Head)	(Percent)	(1,000 Head)	(1,000 Head)	(Percent)	(1,000 Head)	(1,000 Head)	(Percent)	(1,000 Head)	(1,000 Head)	(Percent)
Arizona	272	274	101	29	28	97	23	28	122	1	1	100
California	480	510	106	50	59	118	55	52	95	5	2	40
Colorado	1,000	960	96	140	150	107	155	150	97	5	10	200
Idaho	230	220	96	26	32	123	40	36	90	1	1	100
Iowa	620	620	100	82	96	117	68	84	124	4	2	50
Kansas	2,110	2,010	95	365	360	99	425	385	91	20	15	75
Nebraska	2,480	2,400	97	390	405	104	425	420	99	15	15	100
Oklahoma	345	260	75	52	43	83	49	45	92	3	3	100
South Dakota ...	230	230	100	34	43	126	33	30	91	1	3	300
Texas	2,720	2,440	90	415	370	89	380	420	111	15	20	133
Washington	247	201	81	25	34	136	38	37	97	1	3	300
Other States	459	468	102	56	61	109	54	49	91	3	2	67
United States ...	11,193	10,593	95	1,664	1,681	101	1,745	1,736	99	74	77	104

¹Includes death loss, movement from feedlots to pasture, and shipments to other feedlots for further feeding.

Cattle on Feed: Number on Feed by Class, 1,000+ Capacity Feedlots by Quarter, State, and United States, 2013-2014

State	Steers & Steer Calves			Heifers & Heifer Calves			Cows & Bulls		
	January 1, 2013	October 1, 2013	January 1, 2014	January 1, 2013	October 1, 2013	January 1, 2014	January 1, 2013	October 1, 2013	January 1, 2014
	(1,000 Head)	(1,000 Head)	(1,000 Head)	(1,000 Head)	(1,000 Head)	(1,000 Head)	(1,000 Head)	(1,000 Head)	(1,000 Head)
Arizona	264	261	268	8	7	6	0	0	0
California	405	455	470	75	44	40	0	1	0
Colorado	620	560	615	370	305	340	10	5	5
Idaho	126	115	125	99	90	91	5	5	4
Iowa	420	355	425	200	205	195	0	0	0
Kansas	1,160	1,060	1,060	945	935	945	5	5	5
Nebraska	1,530	1,390	1,545	930	810	820	20	10	35
Oklahoma	220	190	170	125	95	90	0	0	0
South Dakota ..	113	104	125	91	67	80	26	9	25
Texas	1,720	1,540	1,510	999	919	929	1	1	1
Washington ...	147	109	120	96	72	77	4	3	4
Other States ..	322	303	347	132	113	120	5	1	1
United States ..	7,047	6,442	6,780	4,070	3,662	3,733	76	40	80

All Cattle on Feed, Iowa

Item	Lots 1,000+ Head	Lots Less than 1,000 Head	All Lots
	(1,000 Head)	(1,000 Head)	(1,000 Head)
Cattle on Feed, December 1, 2013	610	725	1,335
December Placements	96	110	206
December Marketings	84	80	164
December Other Disappearance	2	5	7
Cattle on Feed, January 1, 2014	620	750	1,370

MILK PRODUCTION

Milk Cows and Production: Selected States, December 2012 and 2013

State	Milk Cows ¹		Milk Per Cow ²		Milk Production ²		
	2012	2013	2012	2013	2012	2013	Change from 2012
	(1,000 Head)	(1,000 Head)	(Pounds)	(Pounds)	(Million Pounds)	(Million Pounds)	(Percent)
Arizona	188	191	1,995	1,985	375	379	1.1
California	1,780	1,781	1,920	1,950	3,418	3,473	1.6
Colorado	135	139	2,020	2,050	273	285	4.4
Florida	122	123	1,580	1,635	193	201	4.1
Idaho	580	565	1,930	1,960	1,119	1,107	-1.1
Illinois	100	96	1,690	1,630	169	156	-7.7
Indiana	174	178	1,820	1,820	317	324	2.2
Iowa	205	206	1,890	1,870	387	385	-0.5
Kansas	131	136	1,840	1,845	241	251	4.1
Michigan	377	381	1,990	1,985	750	756	0.8
Minnesota	465	460	1,690	1,665	786	766	-2.5
Missouri	93	90	1,230	1,190	114	107	-6.1
New Mexico	321	323	2,100	2,050	674	662	-1.8
New York	610	613	1,830	1,850	1,116	1,134	1.6
Ohio	270	268	1,710	1,665	462	446	-3.5
Oregon	123	124	1,660	1,670	204	207	1.5
Pennsylvania	534	530	1,675	1,675	894	888	-0.7
Texas	433	440	1,855	1,820	803	801	-0.2
Utah	90	94	1,810	1,850	163	174	6.7
Vermont	134	132	1,630	1,650	218	218	-
Virginia	95	94	1,545	1,600	147	150	2.0
Washington	264	266	1,950	1,955	515	520	1.0
Wisconsin	1,270	1,270	1,850	1,815	2,350	2,305	-1.9
23-State Total	8,494	8,500	1,847	1,846	15,688	15,695	-

-Represents zero. ¹Includes dry cows, excludes heifers not yet fresh. ² Excludes milk sucked by calves

OAT COUNTY ESTIMATES

In 2013, Winneshiek County was the largest oat-producing county with 395,000 bushels, according to estimates released today by the USDA National Agricultural Statistics Service. Clayton and Allamakee were second and third, respectively, making northeast Iowa the largest oat producing district.

Widely variable conditions across the State resulted in some counties reporting higher yields than 2012 and some reporting lower yields than last year. Tama and Story were the counties with the greatest increases in yield, both more than 14 bushels per acre. The highest yielding county was Plymouth with a yield of 95.2. Webster and Sac were the next two counties with the highest yields.

Buchanan at 61.5 and Hardin at 58.5 both had over a twenty bushel drop in yield from 2012. The lowest yielding county was Winnebago at 41.8 bushels per acre. Henry had the second lowest yield at 49.2, the only other county with a yield less than 50 bushels per acre.

Oats: Area Planted, Harvested, Yield and Production, Iowa by County, 2012-2013

[Some county/district data does not meet publication standards. However, this unpublished data is included in "other counties/other districts."]

County and District	Area Planted		Area Harvested		Yield		Production	
	2012	2013	2012	2013	2012	2013	2012	2013
	(Acres)	(Acres)	(Acres)	(Acres)	(Bushels)	(Bushels)	(Bushels)	(Bushels)
Cherokee.....	(D)	600	(D)	80	(D)	88.8	(D)	7,100
Dickinson.....	(D)	500	(D)	290	(D)	76.6	(D)	22,200
Palo Alto.....	1,400	4,700	1,380	870	76.8	72.5	106,000	63,100
Plymouth.....	1,000	1,300	790	610	82.4	95.2	65,100	58,100
Sioux.....	600	600	540	350	73.5	81.4	39,700	28,500
Other Counties.....	3,100	5,300	2,340	1,440	74.0	75.0	173,200	108,000
Northwest.....	6,100	13,000	5,050	3,640	76.0	78.8	384,000	287,000
Butler.....	800	1,600	660	420	82.6	75.7	54,500	31,800
Cerro Gordo.....	600	5,800	510	440	69.6	75.5	35,500	33,200
Mitchell.....	900	7,500	470	430	74.5	54.9	35,000	23,600
Winnebago.....	(D)	4,000	(D)	340	(D)	41.8	(D)	14,200
Other Counties.....	4,500	25,400	3,210	3,970	63.2	66.8	203,000	265,200
North Central.....	6,800	44,300	4,850	5,600	67.6	65.7	328,000	368,000
Allamakee.....	(D)	8,600	(D)	1,770	(D)	71.2	(D)	126,000
Bremer.....	900	(D)	530	(D)	80.9	(D)	42,900	(D)
Buchanan.....	800	2,000	580	410	85.7	61.5	49,700	25,200
Clayton.....	5,500	7,100	1,800	3,850	75.6	62.9	136,000	242,000
Delaware.....	3,500	4,700	1,720	1,150	79.1	67.0	136,000	77,000
Fayette.....	(D)	5,500	(D)	1,070	(D)	67.1	(D)	71,800
Howard.....	1,700	(D)	1,100	(D)	68.2	(D)	75,000	(D)
Winneshiek.....	5,900	12,300	4,420	5,700	67.0	69.3	296,000	395,000
Other Counties.....	16,300	20,700	6,850	9,250	72.3	69.2	495,400	640,000
Northeast.....	34,600	60,900	17,000	23,200	72.4	68.0	1,231,000	1,577,000
Audubon.....	(D)	1,000	(D)	140	(D)	78.6	(D)	11,000
Carroll.....	(D)	500	(D)	140	(D)	79.3	(D)	11,100
Crawford.....	(D)	1,400	(D)	170	(D)	67.1	(D)	11,400
Harrison.....	(D)	600	(D)	30	(D)	80.0	(D)	2,400
Ida.....	(D)	600	(D)	300	(D)	86.7	(D)	26,000
Sac.....	(D)	500	(D)	100	(D)	93.0	(D)	9,300
Shelby.....	(D)	700	(D)	340	(D)	75.3	(D)	25,600
Other Counties.....	(D)	6,400	(D)	1,450	(D)	66.3	(D)	96,200
West Central.....	(D)	11,700	(D)	2,67	(D)	72.3	(D)	193,000

continued

Oats: Area Planted, Harvested, Yield and Production, Iowa by County, 2012-2013

[Some county/district data does not meet publication standards. However, this unpublished data is included in "other counties/other districts."]

County and District	Area Planted		Area Harvested		Yield		Production	
	2012	2013	2012	2013	2012	2013	2012	2013
	(Acres)	(Acres)	(Acres)	(Acres)	(Bushels)	(Bushels)	(Bushels)	(Bushels)
Boone.....	600	(D)	170	(D)	72.4	(D)	12,300	(D)
Grundy.....	(D)	500	(D)	240	(D)	73.3	(D)	17,600
Hardin.....	500	1,100	360	600	81.7	58.5	29,400	35,100
Marshall.....	700	700	320	340	55.9	67.9	17,900	23,100
Poweshiek.....	2,000	2,100	520	560	72.3	64.5	37,600	36,100
Story.....	500	1,000	300	230	56.3	70.4	16,900	16,200
Tama.....	1,500	2,000	750	320	66.7	80.9	50,000	25,900
Webster.....	(D)	1,900	(D)	460	(D)	93.5	(D)	43,000
Other Counties.....	3,600	6,300	1,080	1,710	63.8	83.6	68,900	143,000
Central.....	9,400	15,600	3,500	4,460	66.6	76.2	233,000	340,000
Benton.....	(D)	1,600	(D)	740	(D)	69.3	(D)	51,300
Clinton.....	1,200	1,400	750	660	64.4	73.5	48,300	48,500
Iowa.....	1,900	2,100	950	840	63.1	52.4	59,900	44,000
Johnson.....	1,500	2,100	920	810	63.2	63.1	58,100	51,100
Jones.....	(D)	2,300	(D)	440	(D)	52.3	(D)	23,000
Linn.....	1,300	1,500	600	240	69.8	55.8	41,900	13,400
Muscatine.....	1,200	1,200	980	200	55.0	57.0	53,900	11,400
Scott.....	600	(D)	220	(D)	49.5	(D)	10,900	(D)
Other Counties.....	7,200	6,900	3,280	3,070	61.3	69.5	201,000	213,300
East Central.....	14,900	19,100	7,700	7,000	61.6	65.1	474,000	456,000
Adair.....	(D)	4,300	(D)	980	(D)	64.7	(D)	63,400
Adams.....	(D)	2,300	(D)	600	(D)	62.3	(D)	37,400
Cass.....	(D)	1,300	(D)	250	(D)	59.2	(D)	14,800
Taylor.....	(D)	2,100	(D)	90	(D)	68.9	(D)	6,200
Other Counties.....	(D)	4,000	(D)	570	(D)	70.5	(D)	40,200
Southwest.....	(D)	14,000	(D)	2,490	(D)	65.1	(D)	162,000
Appanoose.....	2,000	(D)	190	(D)	57.4	(D)	10,900	(D)
Clarke.....	2,500	(D)	950	(D)	45.3	(D)	43,000	(D)
Ringgold.....	(D)	4,400	(D)	1,600	(D)	52.4	(D)	83,900
Union.....	(D)	3,600	(D)	340	(D)	66.5	(D)	22,600
Other Counties.....	20,800	20,900	7,660	4,340	50.1	46.2	384,100	200,500
South Central.....	25,300	28,900	8,800	6,280	49.8	48.9	438,000	307,000
Davis.....	(D)	2,200	(D)	190	(D)	58.9	(D)	11,200
Henry.....	1,100	800	140	130	62.1	49.2	8,700	6,400
Jefferson.....	(D)	700	(D)	330	(D)	65.2	(D)	21,500
Mahaska.....	1,500	(D)	480	(D)	68.8	(D)	33,000	(D)
Van Buren.....	1,700	(D)	230	(D)	46.5	(D)	10,700	(D)
Wapello.....	1,500	(D)	590	(D)	66.3	(D)	39,100	(D)
Washington.....	1,300	1,300	540	850	58.0	58.5	31,300	49,700
Other Counties.....	6,500	7,500	2,220	3,160	61.4	57.3	136,200	181,200
Southeast.....	13,600	12,500	4,200	4,660	61.7	57.9	259,000	270,000
Other Districts.....	19,300	(X)	6,900	(X)	61.3	(X)	423,000	(X)
State.....	130,000	220,000	58,000	60,000	65.0	66.0	3,770,000	3,960,000

(D) Not Disclosed
(X) Not Applicable