



## CROP PRODUCTION

### IN THIS ISSUE

*Annual Crop  
Production  
Supply & Demand  
Grain Stocks*

**Corn for grain** production in Iowa during 2013 is estimated at 2.16 billion bushels, according to the USDA National Agricultural Statistics Service annual *Crop Production 2013 Summary* report. This estimate is down 2 percent from the November 1 forecast but 15 percent above 2012. Iowa's corn for grain yield is estimated at 165 bushels per acre, 4 bushels less than the November 1 forecast but 28 bushels above 2012. Area harvested for grain is estimated at 13.1 million acres, unchanged from the November 1 forecast and 600,000 acres below 2012. Corn planted for all purposes in 2013 is estimated at 13.6 million acres, down 4 percent from 2012.

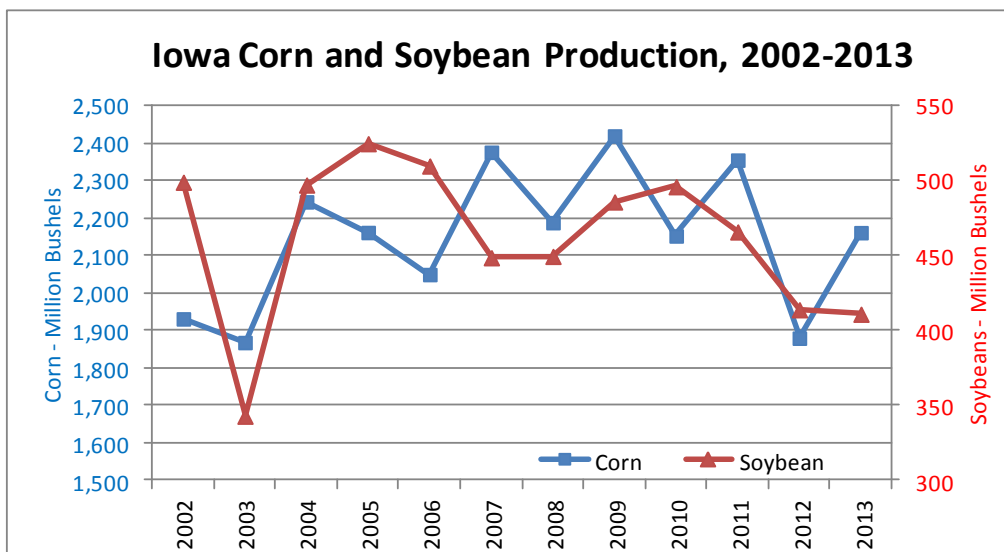
**Corn for silage** production is estimated at 7.41 million tons, up 52 percent from 2012 and the largest silage production since 1982. The silage yield estimate of 19.0 tons per acre is 4.0 tons per acre higher than 2012. Producers harvested 390,000 acres of corn for silage, an increase of 65,000 acres from 2012. It is the largest acreage harvested for silage since 1993.

**Soybean** production is estimated at 411 million bushels in 2013, down 1 percent from the November 1 forecast and down 1 percent from 2012. This is the lowest production since 2003. Iowa soybean growers averaged 44.5 bushels per acre in 2013. This is 0.5 bushel below the November 1 forecast but equal to 2012. The harvested acreage of 9.24 million is 1 percent below the previous year. Soybean planted acreage, at 9.30 million acres, is down 1 percent from 2012.

**All hay** production for the state is estimated at 3.38 million tons, up 20 percent from the 2.81 million tons produced in 2012. Producers averaged 2.9 tons per acre, up from 2.5 tons in 2012. All hay harvested acres is estimated at 1.17 million acres, up 3 percent from 2012.

**Alfalfa and alfalfa mixtures** production is estimated at 2.41 million tons, up 14 percent from 2012. Producers averaged 3.3 tons per acre. Harvested acres are unchanged from last year at 730,000. Iowa producers seeded 145,000 acres of alfalfa in 2013, up 26 percent from the previous year.

**Other hay** production is estimated at 968,000 tons, 39 percent above 2012. Producers averaged 2.2 tons per acre, up from 1.7 tons per acre in 2012. Harvested acres of other hay, at 440,000, is up 7 percent from the previous year.



## 2013 Crop Production Summary - Iowa and United States

Crop	For Harvest		Yield per acre		Production	
	2012	2013	2012	2013	2012	2013
	(Thousand Acres)	(Thousand Acres)	(Bushels)	(Bushels)	(Thousand Bushels)	(Thousand Bushels)
<b>IOWA</b>						
Oats for Grain .....	58	60	65.0	66.0	3,770	3,960
Wheat, Winter.....	13	21	53.0	52.0	689	1,092
Corn for Grain .....	13,700	13,100	137.0	165.0	1,876,900	2,161,500
Corn for Silage <sup>1</sup> .....	325	390	15.0	19.0	4,875	7,410
Soybeans .....	9,310	9,240	44.5	44.5	414,295	411,180
Hay, all <sup>1</sup> .....	1,140	1,170	2.47	2.89	2,814	3,377
Alfalfa Hay <sup>1</sup> .....	730	730	2.90	3.30	2,117	2,409
All Other Hay <sup>1</sup> .....	410	440	1.70	2.20	697	968
<b>UNITED STATES</b>						
Oats for Grain .....	1,045	1,030	61.3	64.0	64,024	65,879
Wheat, Winter.....	34,734	32,402	47.3	47.4	1,641,272	1,534,253
Corn for Grain .....	87,375	87,668	123.4	158.8	10,780,296	13,925,147
Corn for Silage <sup>1</sup> .....	7,379	6,256	15.4	18.8	113,450	117,851
Soybeans .....	76,164	75,869	39.8	43.3	3,033,581	3,288,833
Hay, all <sup>1</sup> .....	56,260	58,257	2.13	2.33	119,878	135,946
Alfalfa Hay <sup>1</sup> .....	17,292	17,763	3.01	3.24	52,049	57,581
All Other Hay <sup>1</sup> .....	38,968	40,494	1.74	1.94	67,829	78,365

<sup>1</sup> Yield is reported in tons per acre and hay production in thousand tons.

## WASDE SUPPLY & DEMAND

### U.S. Corn Supply and Demand

CORN	2011-2012	2012-2013 (Est.)	2013-2014 <sup>1</sup> Projections January
	(Million Bushels)	(Million Bushels)	(Million Bushels)
Beginning Stocks .....	1,128	989	821
Production .....	12,360	10,780	13,925
Imports .....	29	162	35
<b>Supply, total</b> .....	<b>13,517</b>	<b>11,932</b>	<b>14,781</b>
Feed & Residual .....	4,557	4,335	5,300
Food, Seed & Industrial .....	6,428	6,044	6,400
<b>Domestic, total</b> .....	<b>10,985</b>	<b>10,379</b>	<b>11,700</b>
Exports .....	1,543	731	1,450
<b>Use, total</b> .....	<b>12,528</b>	<b>11,111</b>	<b>13,150</b>
<b>Ending Stocks, total</b> ...	<b>989</b>	<b>821</b>	<b>1,631</b>
Avg. farm price (\$/bu) ...	6.22	6.89	4.10-4.70

<sup>1</sup> Preliminary

### U.S. Soybean Supply and Demand

SOYBEANS	2011-2012	2012-2013 (Est.)	2013-2014 <sup>1</sup> Projections January
	(Million Bushels)	(Million Bushels)	(Million Bushels)
Beginning Stocks .....	215	169	141
Production .....	3,094	3,034	3,289
Imports .....	16	36	25
<b>Supply, total</b> .....	<b>3,325</b>	<b>3,239</b>	<b>3,454</b>
Crushings .....	1,703	1,689	1,700
Exports .....	1,365	1,320	1,495
Seed .....	90	89	87
Residual .....	-2	1	22
<b>Use, total</b> .....	<b>3,155</b>	<b>3,099</b>	<b>3,304</b>
<b>Ending stocks</b> .....	<b>169</b>	<b>141</b>	<b>150</b>
Avg. farm price (\$/bu) ...	12.50	14.40	11.75-13.25

<sup>1</sup> Preliminary

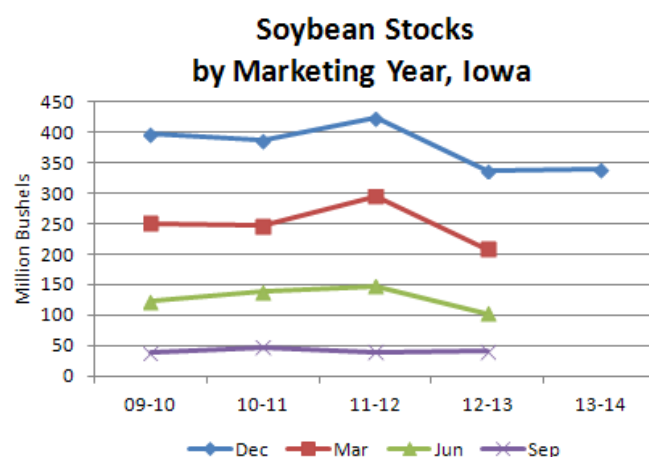
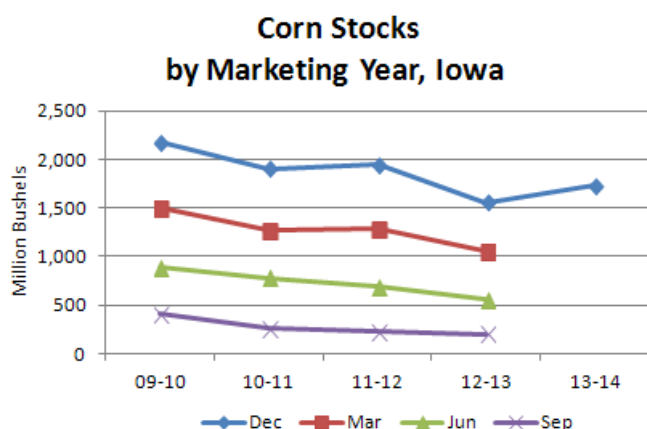
(WASDE is the World Agriculture Supply and Demand Estimates Report published by the USDA's World Agricultural Outlook Board.)

## GRAIN STOCKS

**Iowa corn stocks** in all positions on December 1, 2013 totaled 1.74 billion bushels, up 11 percent from December 1, 2012, according to the USDA National Agricultural Statistics Service *Grain Stocks* report. Of the total stocks, 62 percent were stored on-farm. The September - November 2013 indicated disappearance totaled 629 million bushels, 16 percent more than the 543 million bushels used during the same period last year.

**Iowa soybeans** stored in all positions on December 1, 2013 totaled 340 million bushels, up 1 percent from the 338 million bushels on hand December 1, 2012. Of the total stocks, 40 percent were stored on-farm. Indicated disappearance for September - November 2013 is 112 million bushels, 3 percent less than the 115 million bushels used during the same quarter last year.

**Iowa oats stocks** stored in all positions on December 1, 2013 totaled 4.50 million bushels, 21 percent below the stocks on December 1, 2012. Of the total stocks, 36 percent were stored on-farm. The September - November 2013 indicated disappearance is 624 thousand bushels, 30 percent less than the 891 thousand bushels used during the same quarter last year.



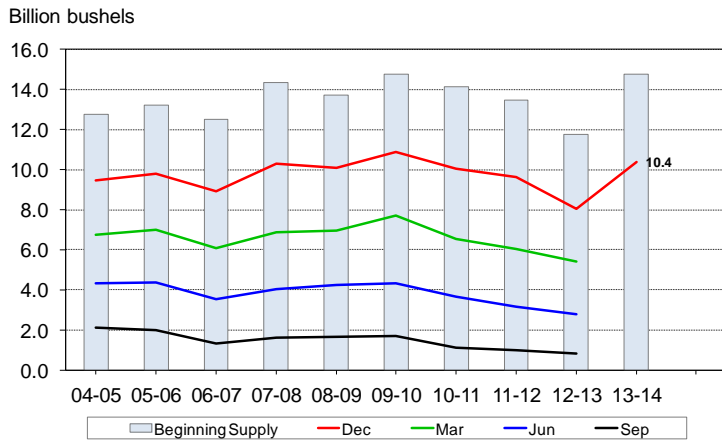
### Grain Stocks by Position, December 1, Iowa and United States

Position and Grain	Iowa			United States		
	December 1 2012	December 1 2013	'13 as % of '12	December 1 2012	December 1 2013	'13 as % of '12
	(1,000 Bushels)	(1,000 Bushels)	(Percent)	(1,000 Bushels)	(1,000 Bushels)	(Percent)
<b>On-Farm Stocks</b>						
Corn .....	910,000	1,070,000	118	4,586,000	6,380,000	139
Soybeans .....	145,000	135,000	93	910,000	955,000	105
Oats .....	1,200	1,600	133	26,100	25,600	98
Wheat .....	(D)	(D)	(X)	399,500	398,500	100
<b>Off-Farm Stocks <sup>1</sup></b>						
Corn .....	650,221	666,598	103	3,446,732	4,046,104	117
Soybeans .....	193,067	204,798	106	1,056,161	1,192,558	113
Oats .....	4,515	2,898	64	47,051	22,379	48
Wheat .....	2,421	2,079	86	1,271,079	1,064,202	84
<b>Total Stocks</b>						
Corn .....	1,560,221	1,736,598	111	8,032,732	10,426,104	130
Soybeans .....	338,067	339,798	101	1,966,161	2,147,558	109
Oats .....	5,715	4,498	79	73,151	47,979	66
Wheat .....	(D)	(D)	(X)	1,671,579	1,462,702	88

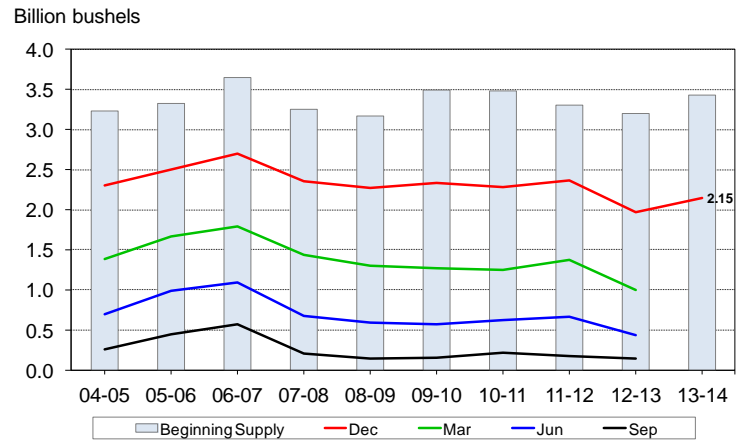
(D) Withheld to avoid disclosing data for individual operations. (X) Not Applicable.

<sup>1</sup> Includes stocks at mills, elevators, warehouses, terminals, and processors.

## U.S. Corn Stocks



## U.S. Soybean Stocks



## UPCOMING SURVEY

**2013 FARM & RANCH IRRIGATION SURVEY**

The U.S. Department of Agriculture will soon conduct the Farm and Ranch Irrigation Survey as a follow-up to the 2012 Census of Agriculture. By providing a single source of comprehensive, up-to-date information on irrigation and water use across the agricultural industry, this survey will help promote efficient irrigation practices and ensure long-term sustainability of water resources.

United States Department of Agriculture  
National Agricultural Statistics Service  
[www.agcensus.usda.gov](http://www.agcensus.usda.gov) ▲ 888.424.7828

**CENSUS OF AGRICULTURE**