



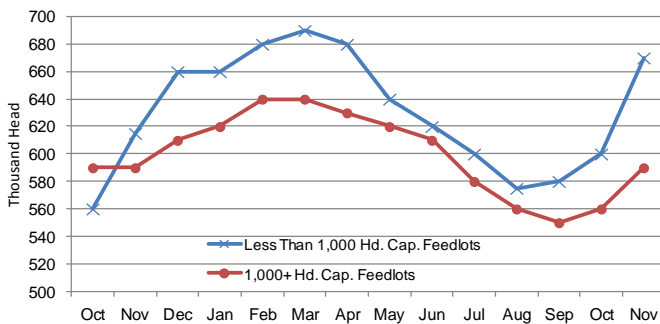
CATTLE ON FEED

Cattle and calves on feed for slaughter market in Iowa for all feedlots totaled 1,260,000 on November 1, 2013 according to the USDA, National Agricultural Statistics Service, Iowa Field Office. The inventory is up nine percent from October 1, 2013 and up five percent from November 1, 2012. Feedlots with a capacity greater than 1,000 head had 590,000 head on feed, up five percent from last month but unchanged from last year. Feedlots with a capacity less than 1,000 head had 670,000 head on feed, up 12 percent from last month and up nine percent from last year.

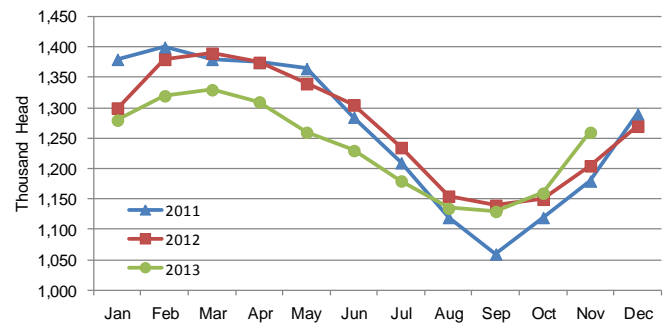
Placements during October totaled 292,000 head, an increase of 29 percent from last month and up five percent from last year. Feedlots with a capacity greater than 1,000 head placed 128,000 head, up 27 percent from last month but down 12 percent from last year. Feedlots with a capacity less than 1,000 head placed 164,000 head. This is up 31 percent from last month and up 24 percent from last year.

Marketings for October were 187,000 head, down two percent from last month and down 14 percent from last year. Feedlots with a capacity greater than 1,000 head marketed 96,000 head, up eight percent from last month but down 33 percent from last year. Feedlots with a capacity less than 1,000 head marketed 91,000 head, down 10 percent from last month but up 21 percent from last year. Other disappearance totaled 5,000 head.

Cattle on Feed, Inventory by Feedlot Capacity, Iowa: Current Month & Past 12 Months



Cattle on Feed, Inventory on all Feedlots, Iowa: 2011-2013



All Cattle on Feed, Iowa

Item	Lots 1,000+ Head (1,000 Head)	Lots Less than 1,000 Head (1,000 Head)	All Lots (1,000 Head)
Cattle on Feed, October 1, 2013	560	600	1160
October Placements	128	164	292
October Marketings	96	91	187
October Other Disappearance	2	3	5
Cattle on Feed, November 1, 2013	590	670	1,260

Cattle on Feed: Number on Feed, Placements, Marketings, and Other Disappearance by Month, 1,000+

Capacity Feedlots [Cattle and calves on feed are animals for slaughter market being fed a ration of grain or other concentrates and are expected to produce a carcass that will grade select or better.]

State	Cattle on Feed November 1			Placements during October			Marketings during October			October Disappearance other than Slaughter ¹		
	2012	2013	'13 as % of '12	2012	2013	'13 as % of '12	2012	2013	'13 as % of '12	2012	2013	'13 as % of '12
	(1,000 Head)	(1,000 Head)	(Percent)	(1,000 Head)	(1,000 Head)	(Percent)	(1,000 Head)	(1,000 Head)	(Percent)	(1,000 Head)	(1,000 Head)	(Percent)
Arizona	265	270	102	19	28	147	25	25	100	1	1	100
California	480	505	105	62	61	98	54	52	96	3	4	133
Colorado	1,030	950	92	195	230	118	160	145	91	5	5	100
Idaho	240	220	92	55	56	102	44	45	102	1	1	100
Iowa	590	590	100	146	128	88	143	96	67	3	2	67
Kansas	2,220	2,050	92	380	470	124	365	400	110	25	20	80
Nebraska	2,480	2,370	96	590	630	107	425	455	107	15	15	100
Oklahoma	345	270	78	65	65	100	54	78	144	1	2	200
South Dakota ...	220	200	91	71	59	83	45	38	84	1	1	100
Texas	2,670	2,530	95	450	530	118	440	440	100	20	20	100
Washington	248	203	82	74	59	80	38	39	103	1	1	100
Other States	466	449	96	73	78	107	44	43	98	2	3	150
United States ...	11,254	10,607	94	2,180	2,394	110	1,837	1,856	101	78	75	96

¹Includes death loss, movement from feedlots to pasture, and shipments to other feedlots for further feeding.

MILK PRODUCTION

Milk production in Iowa during October 2013 totaled 378 million pounds, up 4 percent from October 2012, according to the USDA, National Agricultural Statistics Service – *Milk Production* report. The average number of milk cows during October, at 206,000 head, was 3,000 more than last year. Production per cow averaged 1,835 pounds, 40 pounds higher than in October 2012.

Milk Cows and Production: Selected States, November 2012 and 2013

State	Milk Cows ¹		Milk Per Cow ²		Milk Production ²		
	2012	2013	2012	2013	2012	2013	Change from 2012
	(1,000 Head)	(1,000 Head)	(Pounds)	(Pounds)	(Million Pounds)	(Million Pounds)	(Percent)
Arizona	183	190	1,875	1,880	343	357	4.1
California	1,778	1,781	1,860	1,875	3,307	3,339	1.0
Colorado	135	137	2,015	2,030	272	278	2.2
Florida	122	122	1,310	1,380	160	168	5.0
Idaho	577	570	1,970	1,940	1,137	1,106	-2.7
Illinois	100	98	1,570	1,580	157	155	-1.3
Indiana	172	177	1,735	1,780	298	315	5.7
Iowa	203	206	1,795	1,835	364	378	3.8
Kansas	127	134	1,805	1,810	229	243	6.1
Michigan	374	381	1,990	2,005	744	764	2.7
Minnesota	465	465	1,605	1,600	746	744	-0.3
Missouri	93	90	1,180	1,190	110	107	-2.7
New Mexico	324	322	2,025	2,025	656	652	-0.6
New York	610	610	1,775	1,825	1,083	1,113	2.8
Ohio	270	269	1,650	1,630	446	438	-1.8
Oregon	123	123	1,685	1,690	207	208	0.5
Pennsylvania	533	532	1,620	1,625	863	865	0.2
Texas	430	440	1,795	1,820	772	801	3.8
Utah	88	92	1,810	1,820	159	167	5.0
Vermont	133	132	1,595	1,620	212	214	0.9
Virginia	95	94	1,465	1,520	139	143	2.9
Washington	261	266	1,960	1,970	512	524	2.3
Wisconsin	1,271	1,272	1,775	1,790	2,256	2,277	0.9
23-State Total ³	8,467	8,503	1,792	1,806	15,172	15,356	1.2

¹ Includes dry cows, excludes heifers not yet fresh. ² Excludes milk sucked by calves

MONTHLY PRICES

The preliminary November 2013 average price received by farmers for **corn** in Iowa is \$4.30 per bushel according to the latest USDA, National Agricultural Statistics Service – *Agricultural Prices* report. This is down \$0.30 from the October full month average price and \$2.73 lower than November 2012.

The preliminary November Iowa average **soybean** price, at \$12.70 per bushel is up \$0.20 from the October full month price, but \$1.60 lower than last year.

The preliminary October **oat** price is \$3.90 per bushel, down \$0.31 from the October full month average and \$0.30 below the November 2012 average price.

All hay prices in Iowa averaged \$184.00 per ton in November, up \$8.00 from October, but \$18.00 per ton less than November 2012. **Alfalfa hay** prices were down \$2.00 from October and fell \$20.00 per ton from one year ago, to \$193.00. **Other hay** prices were unchanged from October but \$7.00 per ton lower than last year, at \$130.00.

Iowa dairy farmers received an average of \$21.90 per cwt for **milk** sold in November, \$0.60 more than October, but \$1.10 per cwt less than one year ago.

Prices Received by Farmers

IOWA	Nov 2012	Oct 2013	Nov ¹ 2013
-----Dollars-----			
Corn Bu	7.03	4.60	4.30
Soybeans Bu	14.30	12.50	12.70
Oats Bu	4.20	4.21	3.90
All Hay, baled Ton	202.00	176.00	184.00
Alfalfa Hay, baled Ton	213.00	195.00	193.00
Other Hay, baled Ton	137.00	130.00	130.00
Milk Cows ² Hd	1,420.00	(NA)	(NA)
Milk (whls) Cwt	23.00	21.30	21.90

UNITED STATES	Nov 2012	Oct 2013	Nov ¹ 2013
-----Dollars-----			
Corn Bu	7.01	4.61	4.29
Soybeans Bu	14.30	12.50	12.70
Oats Bu	3.88	3.46	3.43
All Hay, baled Ton	190.00	177.00	171.00
Alfalfa Hay, baled Ton	215.00	193.00	188.00
Other hay, baled Ton	144.00	141.00	135.00
Hogs, all Cwt	61.10	68.50	64.70
Brw & Gilts Cwt	61.20	68.40	64.50
Sows Cwt	58.90	71.90	68.70
Beef Cattle Cwt	123.00	128.00	131.00
Cows Cwt	76.80	81.20	80.50
Strs & Hfrs Cwt	128.00	128.00	133.00
Calves Cwt	161.00	181.00	182.00
Milk Cows ² Hd	(NA)	(NA)	(NA)
Milk (whls) Cwt	22.10	20.70	21.30
Eggs (mkt) ³ Doz	1.18	1.04	1.33

(NA) Not available.

¹Preliminary

²Animals sold for dairy herd replacement only. Prices estimated in January, April, July, and October.

³Eggs are mid-month prices.

Prices Index Summary, United States

PRICES RECEIVED INDEX	Nov 2012	Oct 2013	Nov 2013	Nov 2012	Oct 2013	Nov 2013
1910-14=100			1990-92=100			
All Products	1315	1199	1162	207	189	183
Crops	1178	1006	949	238	203	191
Food grains	842	735	721	266	232	227
Feed grains & hay	1075	728	681	301	204	191
Oilseeds	1383	1226	1239	252	224	226
Lvstk	1283	1280	1318	167	167	172
Meat Animals	1630	1728	1740	160	170	171
Dairy Prod.	1360	1274	1311	169	158	163
Poultry & eggs	509	473	512	181	168	183

PRICES PAID INDEX	Nov 2012	Oct 2013	Nov 2013	Nov 2012	Oct 2013	Nov 2013
1910-14=100			1990-92=100			
Prices Paid	2885	2863	2834	217	215	213
Production	2239	2202	2174	231	227	224
Feed	1346	1145	1066	276	235	218
Livestock & pltry	2131	2417	2464	167	189	193
Seeds	3606	3776	3776	364	381	381
Fertilizer	1189	1031	1031	324	281	281
Chemicals	967	985	989	156	159	160
Fuels	2741	2767	2746	355	359	356
Ratio	(NA)	(NA)	(NA)	95	88	86
Parity Ratio ¹	46	42	41	(NA)	(NA)	(NA)

(NA) Not available.

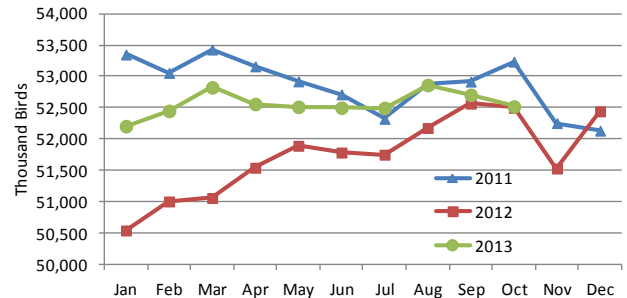
¹ Ratio of index of prices received to index of prices paid for commodities and services, interest, taxes, and farm wage rates.

CHICKENS AND EGGS

Egg production in Iowa for October 2013 was 1.25 billion eggs, up three percent from last month, but down two percent from last year, according to the latest *Chickens and Eggs* release from USDA's National Agricultural Statistics Service.

The total number of layers on hand during October was 52.5 million, down fractionally from last month, and virtually unchanged from the 52.5 million in October, 2012. Eggs per 100 layers for the month of October were 2,371, up three percent from last month, but down two percent from 2,408 last year.

All Layers on Hand, Iowa, 2011-2013



Layers on Hand and Eggs Produced – States and United States, October 2012 and 2013

[Data may not add to totals due to rounding. Data by type of flock not shown for some states to avoid disclosing individual operations, data included in United States totals.]

State	Table egg layers in flocks 30,000 & above		All layers on hand		Eggs per 100 layers		Total egg production		Table egg production	
	2012	2013	2012	2013	2012	2013	2012	2013	2012	2013
	(Thousands)	(Thousands)	(Thousands)	(Thousands)	(Number)	(Number)	(Million eggs)	(Million eggs)	(Million eggs)	(Million eggs)
Alabama	1,535	1,419	9,025	9,039	2,006	1,991	181	180	37	35
Arkansas	3,919	3,723	12,212	12,504	2,137	2,063	261	258	95	88
California	19,144	17,731	19,504	18,085	2,364	2,394	461	433	(D)	(D)
Colorado	3,773	4,435	4,173	4,851	2,444	2,556	102	124	(D)	(D)
Connecticut	2,170	2,210	2,234	2,272	2,417	2,421	54	55	(D)	(D)
Florida	8,693	7,721	9,044	8,045	2,333	2,262	211	182	206	177
Georgia	8,903	9,207	17,040	17,842	2,171	2,203	370	393	210	224
Illinois	3,896	3,980	4,158	4,244	2,405	2,403	100	102	96	98
Indiana	25,043	25,782	25,857	26,687	2,274	2,379	588	635	573	616
Iowa	51,568	51,571	52,498	52,520	2,408	2,371	1,264	1,245	1,249	1,229
Maine	3,523	3,505	3,578	3,560	2,348	2,331	84	83	(D)	(D)
Maryland	2,326	2,512	2,440	2,633	2,336	2,469	57	65	56	63
Michigan	11,963	11,789	12,113	11,941	2,435	2,521	295	301	(D)	(D)
Minnesota	9,542	9,772	9,962	10,223	2,429	2,387	242	244	235	236
Mississippi	1,521	1,535	5,399	5,645	2,130	2,055	115	116	39	37
Missouri	6,295	6,410	7,782	7,942	2,287	2,367	178	188	(D)	(D)
Nebraska	9,124	9,203	9,174	9,253	2,496	2,572	229	238	229	238
New York	4,370	4,320	4,604	4,552	2,411	2,548	111	116	(D)	(D)
North Carolina	5,758	5,864	12,401	12,885	2,064	2,080	256	268	134	135
Ohio	27,518	28,103	27,974	28,623	2,345	2,463	656	705	(D)	(D)
Oregon	2,151	2,135	2,285	2,217	2,670	2,706	61	60	59	60
Pennsylvania	23,744	24,392	24,875	25,538	2,452	2,459	610	628	591	608
South Carolina	2,968	2,987	4,207	4,195	2,187	2,288	92	96	70	74
South Dakota	2,296	2,733	2,336	2,773	2,568	2,560	60	71	60	71
Texas	15,220	14,796	18,848	18,589	2,329	2,319	439	431	(D)	(D)
Utah	3,537	3,730	3,567	3,760	2,355	2,367	84	89	84	89
Virginia	1,254	1,213	2,788	2,842	2,080	2,252	58	64	30	32
Washington	6,787	6,613	6,902	6,728	2,362	2,527	163	170	(D)	(D)
Wisconsin	4,416	4,662	5,021	5,243	2,270	2,479	114	130	(D)	(D)
Other States ¹	12,274	12,383	19,893	20,393	2,212	2,236	440	456	320	326
United States	285,231	286,436	341,894	345,621	2,321	2,351	7,936	8,126	6,915	7,055

- Represents zero. (D) Withheld to avoid disclosing data for individual operations. ¹ Includes data for states not published in this table.