

*Pieces of Iowa's Past*, published by the Iowa State Capitol Tour Guides weekly during the legislative session, features historical facts about Iowa, the Capitol, and the early workings of state government. All historical publications are reproduced here with the actual spelling, punctuation, and grammar retained.

**April 13, 2011**

**THIS WEEK: Average Prices of Cattle, Cows and Sheep, and the Necessary Farming Implements for the Beginner**

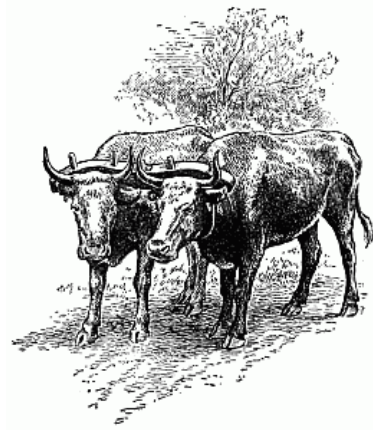
**BACKGROUND:** From *A Glimpse or Iowa in 1846; or, the Emigrant's Guide, and State Directory; with a Description of the New Purchase: Embracing Much Practical Advice and Useful Information to Intending Emigrants*. By J.B. Newhall, W.D. Skillman, Publisher; Burlington, Iowa, 1846, Second Edition.

---

**Average Prices of Cattle, Cows and Sheep, and the Necessary Farming Implements for the Beginner.**

Good milch cows may be bought for \$10 to \$15.

A yoke of oxen, (used in preference to horses in breaking prairie, ploughing, &c.,) from \$40 to \$60.



Sheep may be purchased at from \$1 to \$1.50 per head.

Farm wagon, from \$75 to \$80.

Prairie plough, \$18 to \$20; small Cary or Diamond plough, \$6 to \$8.



Harrow, \$4.



Scythe, axe, pitchfork, spade and rake, \$3.50.



Double log cabin, \$50 to \$70.

Seed corn for ten acres; do. five acres of wheat; do. five acres of potatoes, turnips and garden seeds, \$5.

Poultry and a young pig, \$3.

Family expenses until a crop is raised, (provided the emigrant commences in early spring, so as to plant a small crop,) estimating three to five in a family, say thirty weeks, \$75.

Eighty acres of prairie, at \$1.25 per acre, \$100.

A good saddle and cart horse, \$50 to \$60.  
Log stable and other out-buildings, premising the emigrant has his own team, will not be subjected to any outlay.

Thus you will perceive that, *within* the sum of \$400, you can be comfortably settled upon *your own* eighty acre tract, in Iowa, furnished with a comfortable log house, a good yoke of oxen, a horse, cow, twelve sheep, poultry, pigs, &c.; likewise farm wagon, plough and farming utensils generally, with thirty weeks' provisions laid in, until a small crop is raised for subsistence. Here, then, you are not a "tenant at will," but reposing, as it

were, beneath your "own vine and fig tree," with none to molest or make you afraid. And, if you do not happen to have a "home-sick wife," I can see no reason why, with ordinary good luck, blessed with patience and perseverance, you should not prosper equal to your utmost expectations.