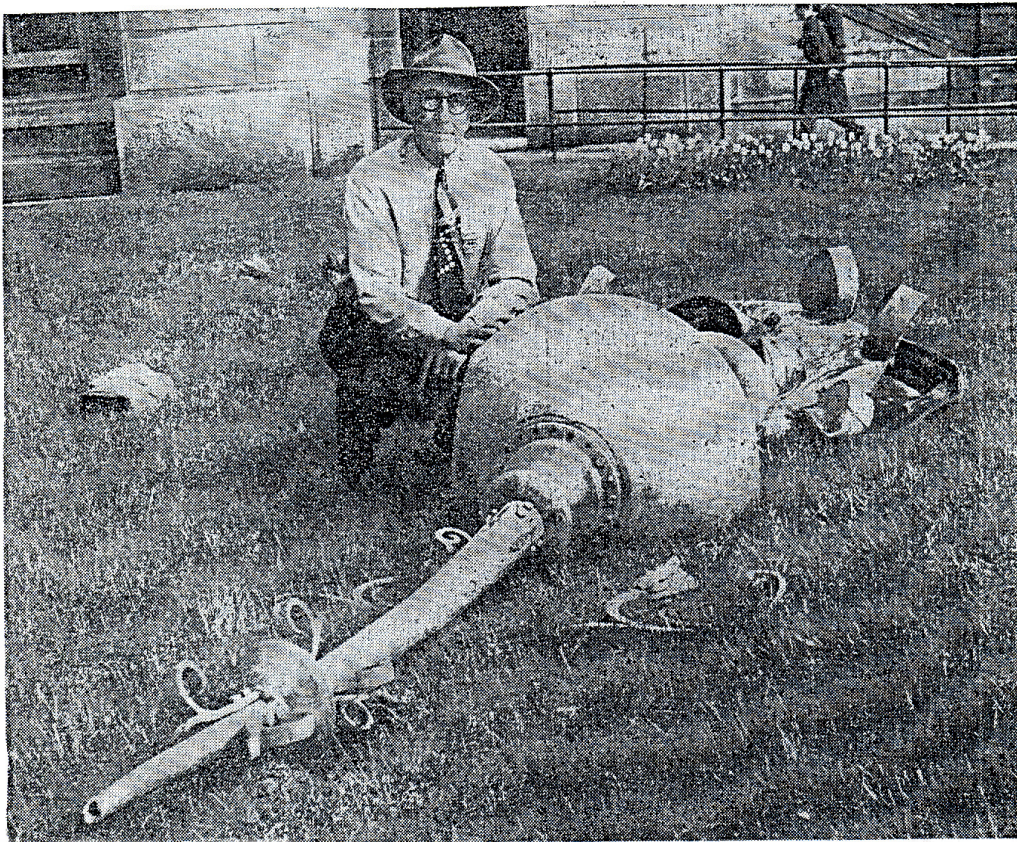


*Pieces of Iowa's Past*, published by the Iowa State Capitol Tour Guides weekly during the legislative session, features historical facts about Iowa, the Capitol, and the early workings of state government. All historical publications are reproduced here with the actual spelling, punctuation, and grammar retained.  
**March 26, 2008**

**THIS WEEK: Windstorm Damage to the Capitol**

**BACKGROUND:** The finial is an architectural device decoratively employed to emphasize the apex of a gable, or any of various distinctive ornaments at the top, end, or corner of a building or structure.



L. E. Forbes of 1639 E. Grand ave., a traffic policeman at the statehouse, poses

Tribune Staff Photos by Jervas Baldwin  
alongside the fallen finial to show its size. Its weight is estimated at about 1,500 pounds.

*Des Moines Tribune May 5, 1959*

The windstorm that roared through Des Moines late Monday night, felling trees and wires and causing other damage, left evidence of its passing at the Iowa statehouse. The gold leaf-covered copper and steel top (the finial) on the small dome at the southeast corner of the statehouse toppled from its lofty perch (top arrow in picture below) to ground (bottom arrow). Dome in background shows finial in place.

