



Cattle on Feed

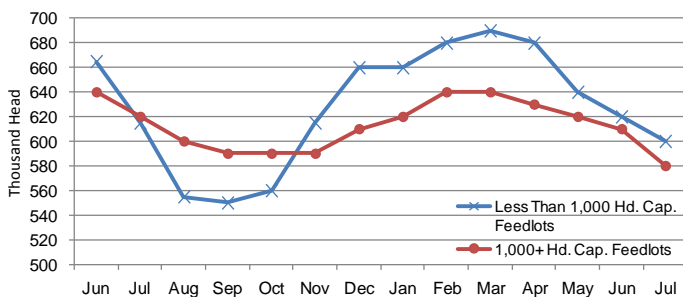
Cattle and calves on feed for slaughter market in Iowa for all feedlots totaled 1,180,000 on July 1, 2013 according to the USDA, National Agricultural Statistics Service, Iowa Field Office. The inventory is down 4 percent from June 1, 2013 and down 4 percent from July 1, 2012. Feedlots with a capacity greater than 1,000 head had 580,000 head on feed, down 5 percent from last month and down 6 percent from last year. Feedlots with a capacity less than 1,000 head had 600,000 head on feed, down 3 percent from last month and down 2 percent from last year.

Placements during June totaled 122,000 head, an increase of 17 percent from last month and up 1 percent from last year.

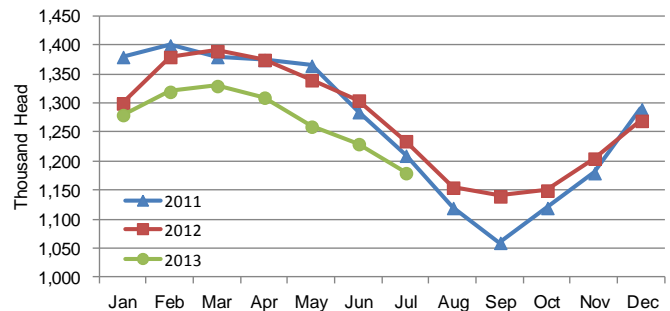
Feedlots with a capacity greater than 1,000 head placed 47,000 head, down 28 percent from last month and down 23 percent from last year. Feedlots with a capacity less than 1,000 head placed 75,000 head. This is up 92 percent from last month and up 25 percent from last year.

Marketings for June were 166,000 head, up 29 percent from last month but down 9 percent from last year. Feedlots with a capacity greater than 1,000 head marketed 75,000 head, up 4 percent from last month but down 3 percent from last year. Feedlots with a capacity less than 1,000 head marketed 91,000 head, up 60 percent from last month but down 13 percent from last year. Other disappearance totaled 6,000 head.

Cattle on Feed, Inventory by Feedlot Capacity, Iowa: Current Month & Past 12 Months



Cattle on Feed, Inventory on all Feedlots, Iowa: 2011-2013



All Cattle on Feed, Iowa

Item	Lots 1,000+ Head (1,000 Head)	Lots Less than 1,000 Head (1,000 Head)	All Lots (1,000 Head)
Cattle on Feed, June 1, 2013	610	620	1,230
June Placements	47	75	122
June Marketings	75	91	166
June Other Disappearance	2	4	6
Cattle on Feed, July 1, 2013	580	600	1,180

Cattle on Feed: Number on Feed, Placements, Marketings, and Other Disappearance by Month, 1,000+ Capacity Feedlots

[Cattle and calves on feed are animals for slaughter market being fed a ration of grain or other concentrates and are expected to produce a carcass that will grade select or better.]

State	Cattle on Feed July 1			Placements during June			Marketings during June			June Disappearance other than Slaughter ¹		
	2012	2013	'13 as % of '12	2012	2013	'13 as % of '12	2012	2013	'13 as % of '12	2012	2013	'13 as % of '12
	(1,000 Head)	(1,000 Head)	(Percent)	(1,000 Head)	(1,000 Head)	(Percent)	(1,000 Head)	(1,000 Head)	(Percent)	(1,000 Head)	(1,000 Head)	(Percent)
Arizona	279	267	96	28	23	82	30	27	90	1	1	100
California	480	515	107	49	61	124	56	53	95	3	3	100
Colorado	970	920	95	125	120	96	170	150	88	5	10	200
Idaho	200	195	98	34	36	106	43	45	105	1	1	100
Iowa	620	580	94	61	47	77	77	75	97	4	2	50
Kansas	2,050	2,010	98	390	355	91	415	395	95	15	10	67
Nebraska	2,270	2,180	96	385	350	91	465	480	103	10	10	100
Oklahoma	320	305	95	53	49	92	51	53	104	2	1	50
South Dakota ...	210	200	95	28	27	96	47	41	87	1	1	100
Texas	2,670	2,560	96	420	425	101	500	480	96	20	15	75
Washington	210	203	97	36	39	108	45	48	107	1	2	200
Other States	431	433	100	55	55	100	66	48	73	3	7	233
United States ...	10,710	10,368	97	1,664	1,587	95	1,965	1,895	96	66	63	95

¹ Includes death loss, movement from feedlots to pasture, and shipments to other feedlots for further feeding.

Cattle on Feed: Number on Feed by Class, 1,000+ Capacity Feedlots by Quarter, State, and United States, 2012-2013

State	Steers & Steer Calves			Heifers & Heifer Calves			Cows & Bulls		
	July 1, 2012	April 1, 2013	July 1, 2013	July 1, 2012	April 1, 2013	July 1, 2013	July 1, 2012	April 1, 2013	July 1, 2013
	(1,000 Head)	(1,000 Head)	(1,000 Head)	(1,000 Head)	(1,000 Head)	(1,000 Head)	(1,000 Head)	(1,000 Head)	(1,000 Head)
Arizona	265	271	262	14	7	5	0	0	0
California	415	420	445	64	59	68	1	1	2
Colorado	645	610	590	320	365	325	5	5	5
Idaho	127	122	102	69	91	92	4	2	1
Iowa	445	430	430	175	200	150	0	0	0
Kansas	1,070	1,160	1,070	975	925	930	5	5	10
Nebraska	1,360	1,530	1,355	890	860	810	20	30	15
Oklahoma	200	195	200	120	110	105	0	0	0
South Dakota .	121	123	105	71	91	71	18	16	24
Texas	1,630	1,600	1,560	1,039	989	999	1	1	1
Washington ...	133	144	104	76	86	96	1	3	3
Other States ..	325	309	304	105	147	128	1	2	1
United States .	6,736	6,914	6,527	3,918	3,930	3,779	56	65	62

United States Cattle on Feed

Cattle and calves on feed for slaughter market in the United States for feedlots with capacity of 1,000 or more head totaled 10.4 million head on July 1, 2013. The inventory was 3 percent below July 1, 2012. The inventory included 6.53 million steers and steer calves, down 3 percent from the previous year. This group accounted for 63 percent of the total inventory. Heifers and heifer calves accounted for 3.78 million head, down 4 percent from 2012.

Placements in feedlots during June totaled 1.59 million, 5 percent below 2012. Net placements were 1.52 million head. During June, placements of cattle and calves weighing less than 600 pounds were 315,000, 600-699 pounds were 232,000, 700-799 pounds were 415,000, and 800 pounds and greater were 625,000. Marketings of fed cattle during June totaled 1.90 million, 4 percent below 2012. Marketings for the month of June are the lowest since the series began in 1996. Other disappearance totaled 63,000 during June, 5 percent below 2012.

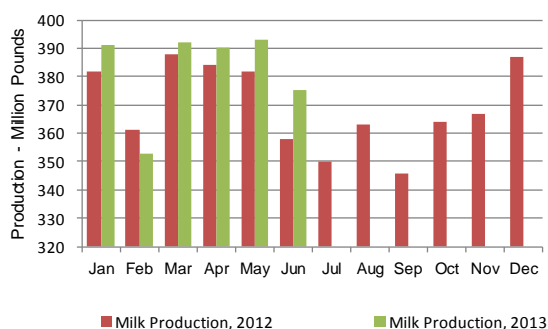
MILK PRODUCTION

Milk production in Iowa during June 2013 totaled 375 million pounds, up 4.5 percent from June 2012 according to the USDA, National Agricultural Statistics Service – *Milk Production Report*.

Milk Cows and Production: Selected States, June 2012 and 2013

State	Milk Production ²		
	2012	2013	Change from 2012
	(Million Pounds)	(Million Pounds)	(Percent)
Arizona	378	378	-
California	3,523	3,495	-0.8
Colorado	268	279	4.1
Florida	199	207	4.0
Idaho	1,154	1,154	-
Illinois	159	160	0.6
Indiana	310	328	5.8
Iowa	359	375	4.5
Kansas	224	245	9.4
Michigan	737	764	3.7
Minnesota	744	758	1.9
Missouri	119	114	-4.2
New Mexico	671	679	1.2
New York	1,098	1,141	3.9
Ohio	440	455	3.4
Oregon	214	216	0.9
Pennsylvania	859	880	2.4
Texas	785	800	1.9
Utah	165	165	-
Vermont	214	221	3.3
Virginia	140	143	2.1
Washington	522	541	3.6
Wisconsin	2,262	2,302	1.8
23-State Total ³	15,544	15,800	1.6

Milk Production, Iowa, 2012-2013



CHICKENS & EGGS

Egg production in Iowa for June 2013 was 1.20 billion eggs, down 4 percent from last month but up 1 percent from last year. The total number of layers on hand during June was 52.5 million, unchanged from last month but up slightly from the 51.8 million layers in June 2012. Eggs per 100 layers for the month of June were 2,280, 4 percent lower than last month and fractionally lower than the 2,286 last year.

All Layers and Egg Production: Selected States, June 2012 and 2013

[Data may not add to totals due to rounding. Data by type of flock not shown for some states to avoid disclosing individual operations, data included in United States totals.]

State	Table egg layers in flocks 30,000 & above		All layers on hand		Eggs per 100 layers		Total egg production		Table egg production	
	2012	2013	2012	2013	2012	2013	2012	2013	2012	2013
	(Thousands)	(Thousands)	(Thousands)	(Thousands)	(Number)	(Number)	(Million eggs)	(Million eggs)	(Million eggs)	(Million eggs)
Indiana	24,204	25,507	24,984	26,503	2,293	2,294	573	608	558	589
Iowa	50,850	51,537	51,786	52,501	2,286	2,280	1,184	1,197	1,170	1,182
Minnesota	9,807	9,714	10,246	10,158	2,284	2,294	234	233	227	226
Nebraska	9,107	9,154	9,157	9,204	2,435	2,445	223	225	223	225
North Carolina	5,646	5,690	12,847	12,987	1,969	2,033	253	264	128	131
Ohio	27,365	28,226	27,896	28,672	2,208	2,277	616	653	(D)	(D)
United States	278,861	283,842	338,415	344,519	2,228	2,249	7,541	7,748	6,510	6,681

MONTHLY PRICES

The preliminary July 2013 average price received by farmers for corn in Iowa was \$7.00 per bushel according to the latest USDA, National Agricultural Statistics Service – *Agricultural Prices* report. This is a \$0.17 decrease from the July 2012 final average price. The preliminary July Iowa average soybean price, at \$15.50 per bushel is \$.50 higher than the July 2012 final average price. The preliminary July oat price is \$4.10 per bushel, an increase of \$0.32 from one year ago.

All hay prices in Iowa averaged \$213.00 per ton in July, \$68.00 per ton higher than July 2012. Alfalfa hay prices increased \$78.00 per ton to \$240.00 and other hay prices increased \$47.00 per ton to \$155.00. Iowa dairy farmers received an average of \$19.80 per cwt for milk sold in July, \$2.40 per cwt more than one year ago.

Prices Received by Farmers

IOWA	July 2012	June 2013	July ¹ 2013
-----Dollars-----			
Corn	7.17	7.09	7.00
Soybeans	15.00	15.20	15.50
Oats	3.78	4.50	4.10
All Hay, baled	145.00	270.00	213.00
Alfalfa Hay, baled	162.00	280.00	240.00
Other Hay, baled	108.00	180.00	155.00
Milk Cows ²	1480.00	(NA)	(NA)
Milk (whls)	17.40	20.10	19.80
<hr/>			
UNITED STATES	July 2012	June 2013	July ¹ 2013
-----Dollars-----			
Corn	7.14	6.97	6.83
Soybeans	15.40	15.10	15.40
Oats	3.70	3.92	3.93
All Hay, baled	184.00	199.00	190.00
Alfalfa Hay, baled	198.00	220.00	209.00
Other hay, baled	143.00	147.00	149.00
Hogs, all	72.10	74.40	76.50
Brw & Gilts	73.10	75.00	76.70
Sows	47.90	60.00	69.90
Beef Cattle	114.00	121.00	120.00
Cows	80.90	80.30	81.80
Strs & Hfrs	117.00	124.00	122.00
Calves	144.00	146.00	153.00
Milk Cows ²	1420.00	(NA)	(NA)
Milk (whls)	16.90	19.50	19.10
Eggs (mkt) ³	0.764	0.694	0.821

(NA) Not available.

¹ Preliminary

² Animals sold for dairy herd replacement only. Prices estimated in January, April, July, and October.

³ Eggs are mid-month prices.

Prices Index Summary, United States

PRICES RECEIVED INDEX	July 2012	June 2013	July 2013	July 2012	June 2013	July 2013
1910-14=100			1990-92=100			
All Products	1214	1270	1273	191	200	201
Crops	1149	1153	1139	232	233	230
Food grains	830	774	741	262	244	234
Feed grains & hay	1048	1056	1026	294	296	288
Oilseeds	1506	1427	1452	275	260	265
Lvstk	1141	1280	1266	149	167	165
Meat Animals	1578	1660	1665	155	163	163
Dairy Prod.	1040	1200	1175	129	149	146
Poultry & eggs	433	538	519	154	192	185
<hr/>						
PRICES PAID INDEX	July 2012	June 2013	July 2013	July 2012	June 2013	July 2013
1910-14=100			1990-92=100			
Prices Paid	2840	2921	2923	213	219	220
Production	2201	2261	2262	227	233	233
Feed	1296	1312	1305	266	269	267
Livestock & pltry	1896	1971	2048	148	154	160
Seeds	3606	3776	3776	364	381	381
Fertilizer	1248	1219	1187	340	332	324
Chemicals	948	959	962	153	155	156
Fuels	2594	2683	2709	336	348	351
Ratio	(NA)	(NA)	(NA)	90	91	91
Parity Ratio ¹	43	43	44	(NA)	(NA)	(NA)

(NA) Not available.

¹ Ratio of index of prices received to index of prices paid for commodities and services, interest, taxes, and farm wage rates.