

STATE LIBRARY OF IOWA
East 12th & Grand
DES MOINES, IOWA 50319

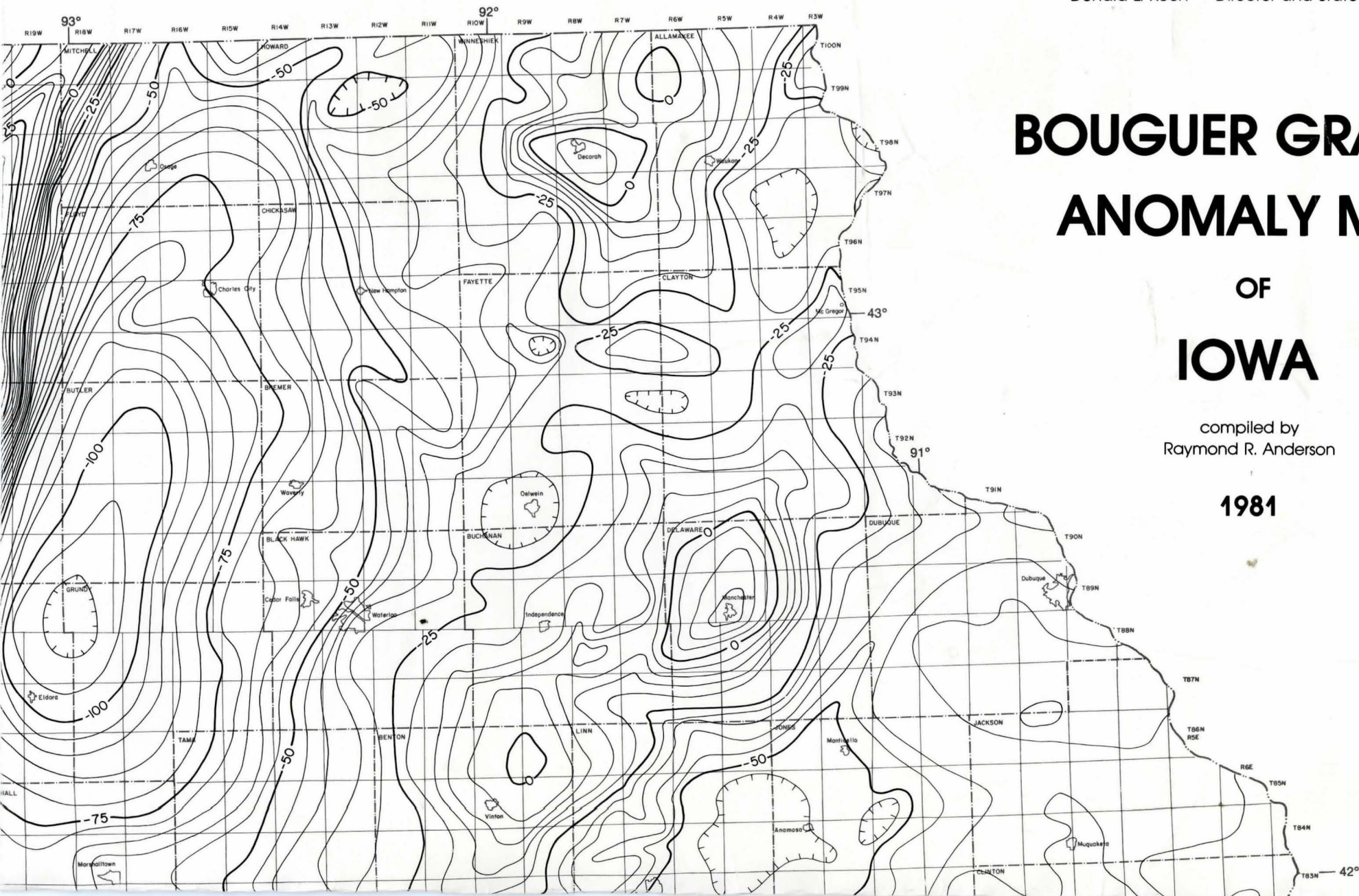
MISCELLANEOUS MAP SERIES 7

Iowa Geological Survey
Donald L. Koch — Director and State Geologist

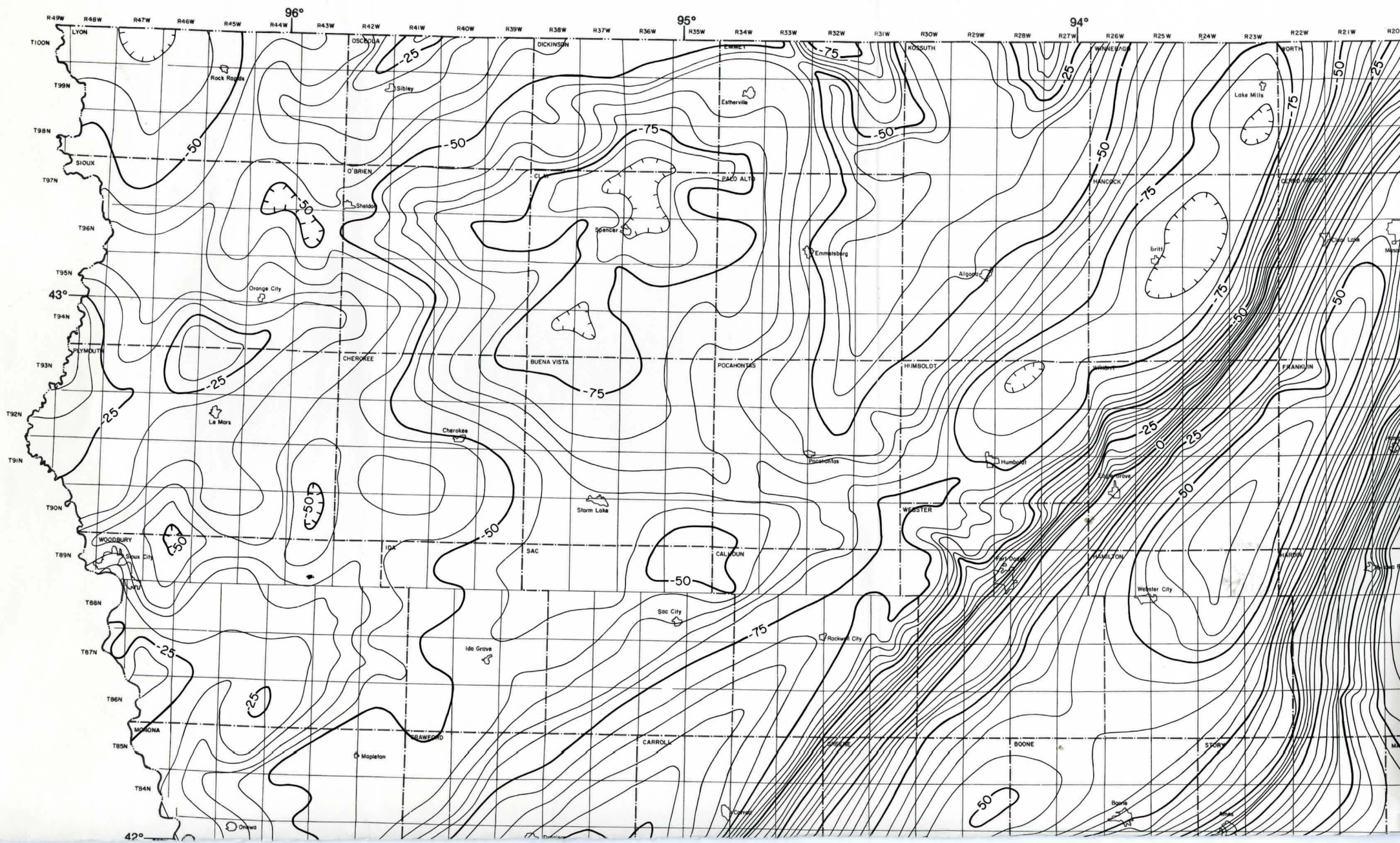
BOUGUER GRAVITY ANOMALY MAP OF IOWA

compiled by
Raymond R. Anderson

1981



17
G345
19:7
1981
c.2

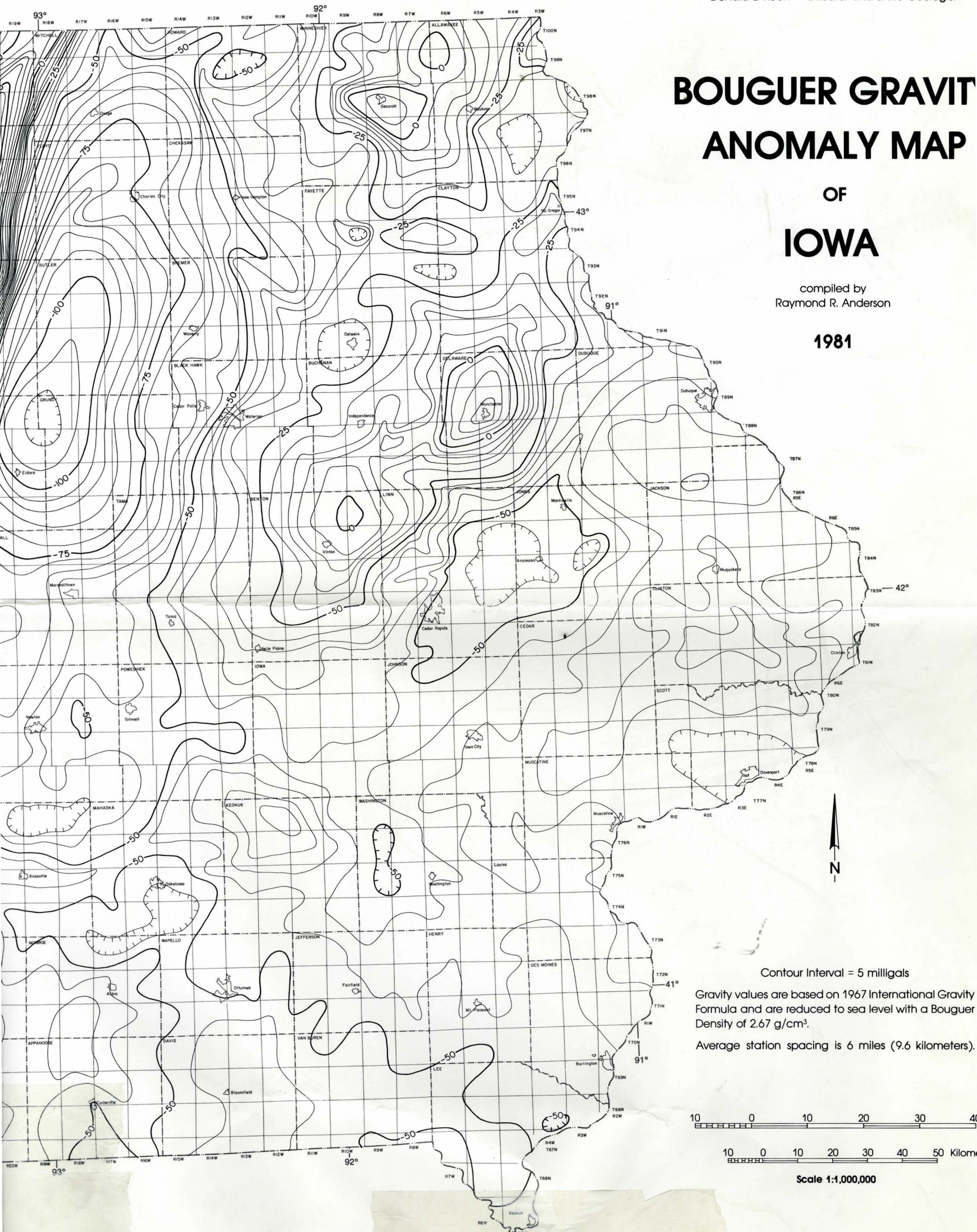


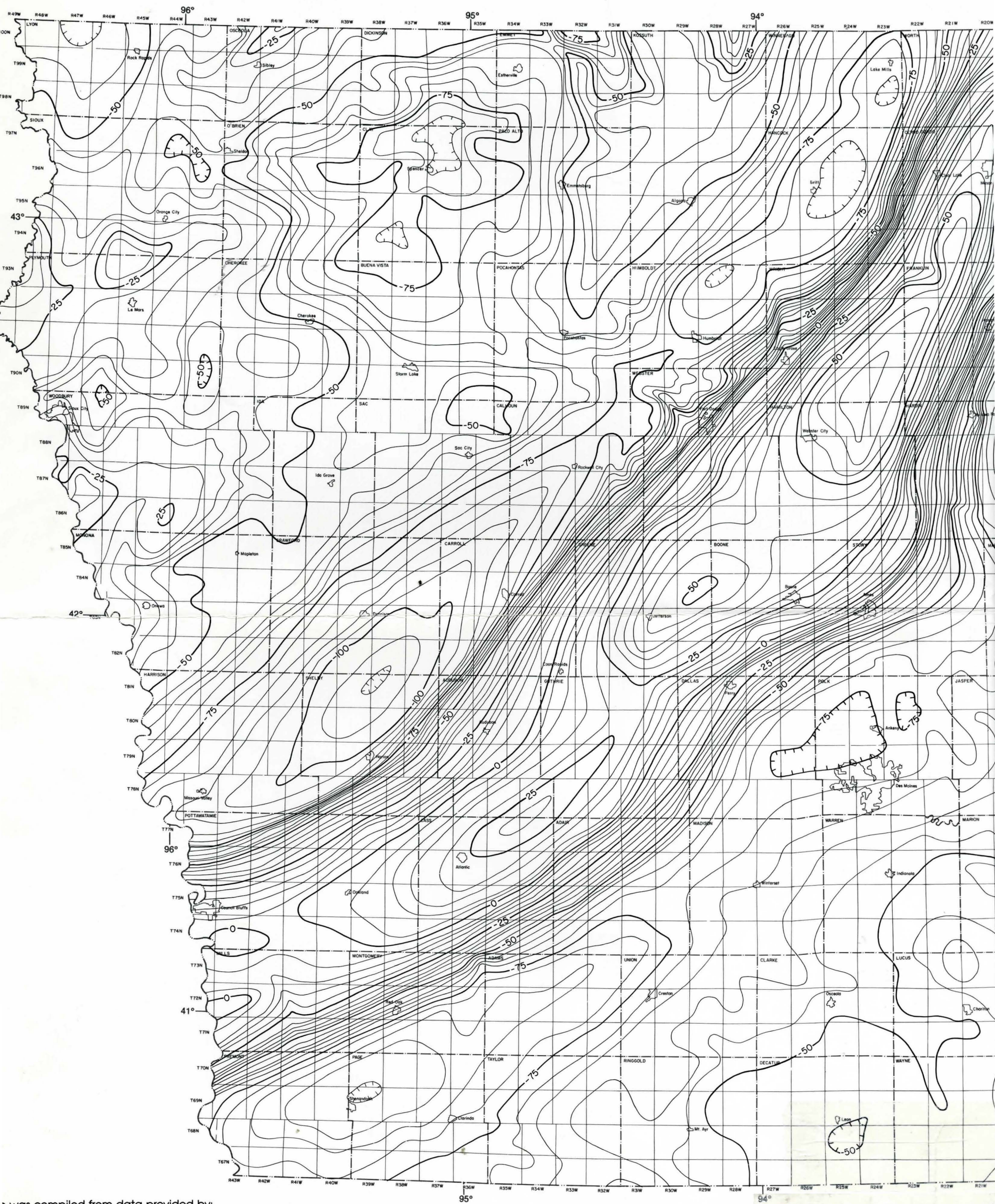
Iowa Geological Survey
Donald L. Koch — Director and State Geologist

BOUGUER GRAVITY ANOMALY MAP OF IOWA

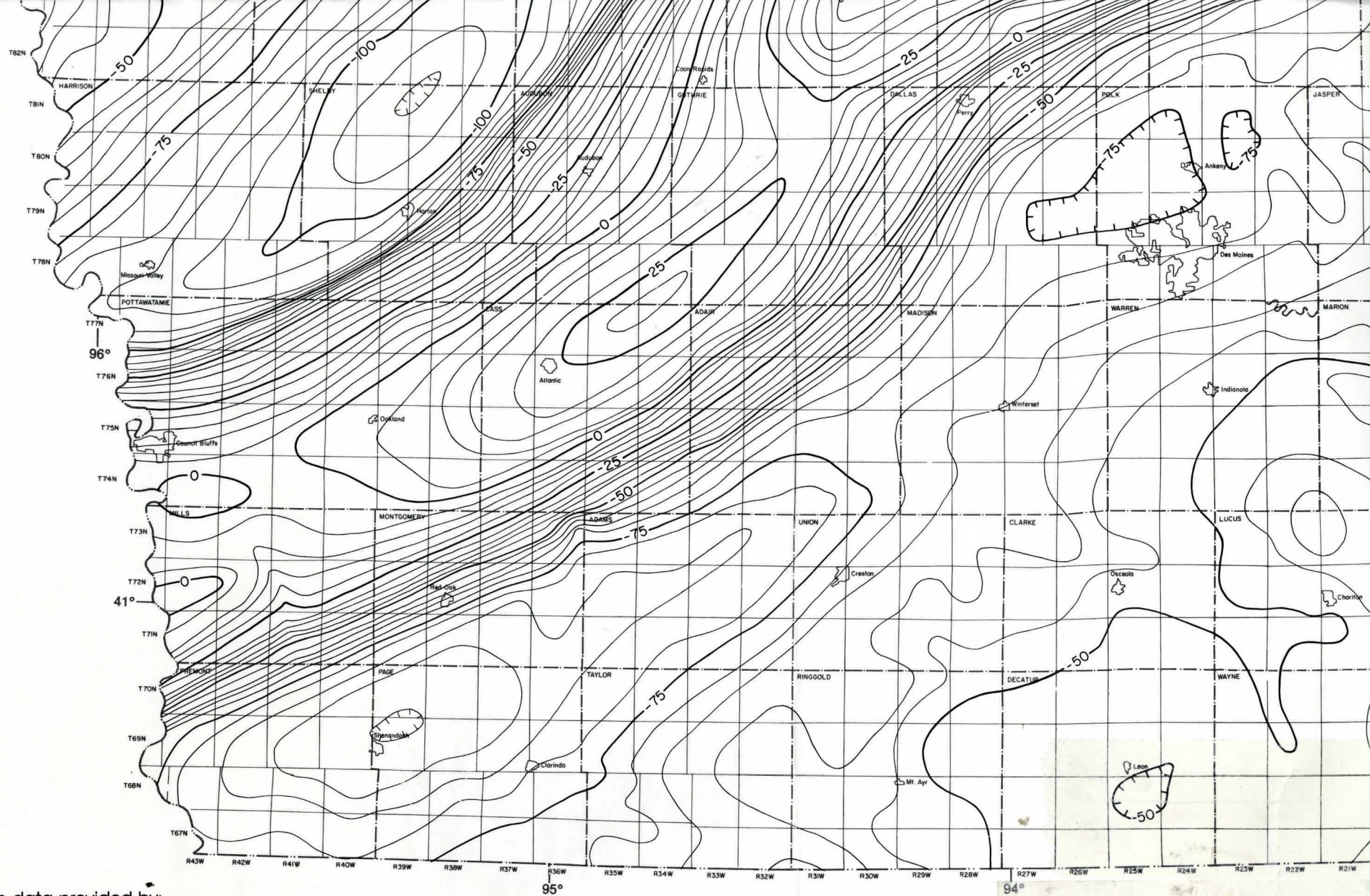
compiled by
Raymond R. Anderson

1981





This map was compiled from data provided by:
 National Oceanic and Atmospheric Administration, Boulder, Colorado
 Daut, 1980. Regional Gravity Data for Southwest Iowa, Open File Report.
 U.S. Geological Survey. Supported in part by Nuclear Regulatory Commission contract NRC-04-78-228
 Additional information provided by Dr. Richard Kellogg, Luther College, Decorah, Iowa



This map was compiled from data provided by:

- National Oceanic and Atmospheric Administration, Boulder, Colorado
- S.W. Daut, 1980. Regional Gravity Data for Southwest Iowa, Open File Report.
Iowa Geological Survey. Supported in part by Nuclear Regulatory Commission contract NRC-04-78-228
- additional information provided by Dr. Richard Kellogg, Luther College, Decorah, Iowa

17
G345
19:7
1981
c.2

