

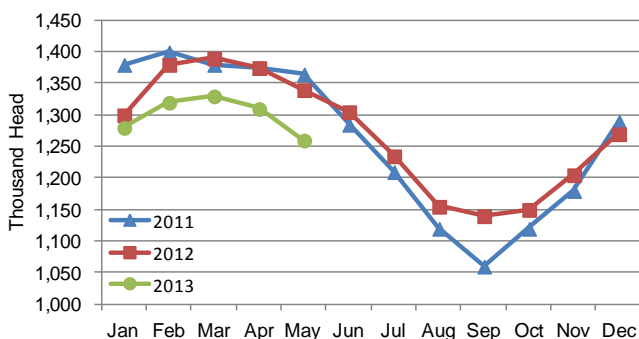
CATTLE ON FEED

Cattle and calves on feed for slaughter market in Iowa for all feedlots totaled 1,260,000 on May 1, 2013 according to the USDA, National Agricultural Statistics Service, Iowa Field Office. The inventory is down 4 percent from April 1, 2013 and down 6 percent from May 1, 2012. Feedlots with a capacity greater than 1,000 head had 620,000 head on feed, down 2 percent from last month and down 5 percent from last year. Feedlots with a capacity less than 1,000 head had 640,000 head on feed, down 6 percent from last month and down 7 percent from last year.

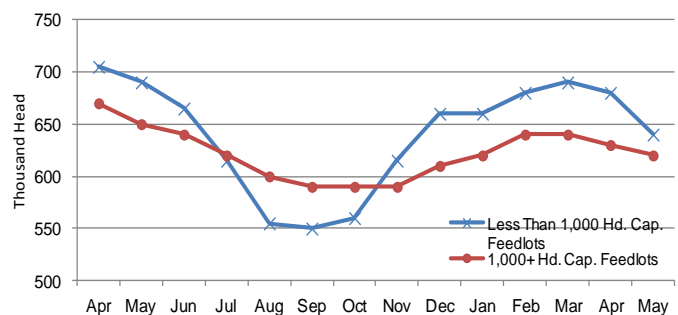
Placements during April totaled 140,000 head, an increase of 7 percent from last month and up 32 percent from last year. Feedlots with a capacity greater than 1,000 head placed 89,000 head, up 25 percent from last month and up 62 percent from last year. Feedlots with a capacity less than 1,000 head placed 51,000 head. This is down 15 percent from last month and unchanged from last year.

Marketings for April were 185,000 head, up 28 percent from last month and up 35 percent from last year. Feedlots with a capacity greater than 1,000 head marketed 97,000 head, up 26 percent from last month and up 35 percent from last year. Feedlots with a capacity less than 1,000 head marketed 88,000 head, up 29 percent from last month and up 35 percent from last year. Other disappearance totaled 5,000 head.

Cattle on Feed, Inventory on all Feedlots, Iowa: 2011-2013



Cattle on Feed, Inventory by Feedlot Capacity, Iowa: Current Month & Past 12 Months



All Cattle on Feed, Iowa

Item	Lots 1,000+ Head (1,000 Head)	Lots Less than 1,000 Head (1,000 Head)	All Lots (1,000 Head)
Cattle on Feed, April 1, 2013	630	680	1,310
April Placements	89	51	140
April Marketings	97	88	185
April Other Disappearance	2	3	5
Cattle on Feed, May 1, 2013	620	640	1,260

Cattle on Feed: Number on Feed, Placements, Marketings, and Other Disappearance by Month, 1,000+ Capacity Feedlots

[Cattle and calves on feed are animals for slaughter market being fed a ration of grain or other concentrates and are expected to produce a carcass that will grade select or better.]

State	Cattle on Feed May 1			Placements during April			Marketings during April			April Disappearance other than Slaughter ¹		
	2012	2013	'13 as % of '12	2012	2013	'13 as % of '12	2012	2013	'13 as % of '12	2012	2013	'13 as % of '12
	(1,000 Head)	(1,000 Head)	(Percent)	(1,000 Head)	(1,000 Head)	(Percent)	(1,000 Head)	(1,000 Head)	(Percent)	(1,000 Head)	(1,000 Head)	(Percent)
Arizona	276	275	100	26	26	100	27	28	104	1	1	100
California	475	490	103	45	65	144	58	52	90	2	3	150
Colorado	1,030	960	93	120	140	117	150	150	100	10	10	100
Idaho	215	210	98	28	33	118	36	36	100	2	2	100
Iowa	650	620	95	55	89	162	72	97	135	3	2	67
Kansas	2,080	2,060	99	300	350	117	380	365	96	10	15	150
Nebraska	2,460	2,390	97	370	450	122	420	470	112	20	10	50
Oklahoma	295	295	100	47	51	109	70	60	86	2	1	50
South Dakota ...	245	225	92	32	28	88	40	32	80	2	1	50
Texas	2,710	2,540	94	410	435	106	465	470	101	15	15	100
Washington	224	220	98	28	26	93	34	35	103	3	4	133
Other States	450	450	100	60	57	95	63	60	95	8	5	63
United States ...	11,110	10,735	97	1,521	1,750	115	1,815	1,855	102	78	69	88

(D) Withheld to avoid disclosing data for individual operations. ¹Includes death loss, movement from feedlots to pasture, and shipments to other feedlots for further feeding.

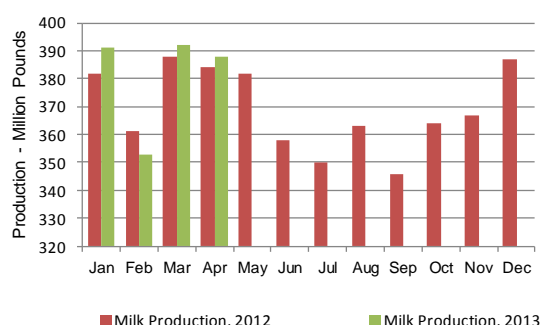
MILK PRODUCTION

Milk Production: Selected States, April 2012 and 2013

State	Milk Production		
	2012 (Million Pounds)	2013 (Million Pounds)	Change from 2012 (Percent)
Arizona	418	411	-1.7
California	3,632	3,626	-0.2
Colorado	268	271	1.1
Florida	221	215	-2.7
Idaho	1,108	1,114	0.5
Illinois	173	173	
Indiana	327	337	3.1
Iowa	384	388	1.0
Kansas	233	248	6.4
Michigan	750	760	1.3
Minnesota	770	784	1.8
Missouri	136	128	-5.9
New Mexico	718	700	-2.5
New York	1,119	1,138	1.7
Ohio	469	470	0.2
Oregon	212	213	0.5
Pennsylvania	904	904	
Texas	843	816	-3.2
Utah	163	158	-3.1
Vermont	216	220	1.9
Virginia	153	153	
Washington	528	537	1.7
Wisconsin	2,286	2,315	1.3
23-State Total	16,031	16,079	0.3

Milk production in Iowa during April 2013 totaled 388 million pounds, up 1 percent from April 2012 according to the USDA, National Agricultural Statistics Service – *Milk Production Report*.

Milk Production, Iowa, 2012-2013



IOWA FERTILIZER AND CHEMICAL USE

	SOYBEANS - APPLICATIONS, MEASURED IN LB	SOYBEANS - APPLICATIONS, MEASURED IN LB / ACRE / APPLICATION, AVG	SOYBEANS - APPLICATIONS, MEASURED IN LB / ACRE / YEAR, AVG	SOYBEANS - APPLICATIONS, MEASURED IN NUMBER, AVG	SOYBEANS - TREATED, MEASURED IN PCT OF AREA PLANTED, AVG
FERTILIZER:					
NITROGEN	19,200,000	15	16	1	13
PHOSPHATE	134,500,000	55	55	1	26
POTASH	270,000,000	78	79	1	36
SULFUR	8,800,000	14	14	1	7
CHEMICAL, FUNGICIDE:					
PYRACLOSTROBIN	100,000	0.106	0.106	1	10
PROPICONAZOLE	27,000	0.132	0.132	1	2
TRIFLOXYSTROBIN	27,000	0.132	0.132	1	2
CHEMICAL, HERBICIDE:					
GLYPHOSATE ISO. SALT	12,113,000	0.893	1.233	1.4	33
GLYPHOSATE	1,117,000	0.819	1	1.2	12
GLYPHOSATE POT. SALT	7,059,000	1.01	1.49	1.5	51
CHEMICAL, INSECTICIDE:					
CHLORPYRIFOS	393,000	0.307	0.307	1	14
BIFENTHRIN	59,000	0.14	0.14	1	4

IOWA PEST MANAGEMENT

	PERCENT OF AREA PLANTED	PERCENT OF OPERATIONS
PRACTICE, AVOIDANCE: (ROTATED CROPS DURING PAST 3 YEARS)	93	92
PRACTICE, AVOIDANCE: (CROP OR PLANT VARIETY CHOSEN FOR SPECIFIC PEST RESISTANCE)	53	50
PRACTICE, MONITORING: (SCOUTED FOR WEEDS)	97	96
PRACTICE, MONITORING: (SCOUTED FOR INSECTS & MITES)	94	91
PRACTICE, PREVENTION: (NO-TILL OR MINIMUM TILL USED)	75	75
PRACTICE, PREVENTION: (SEED TREATED FOR INSECT OR DISEASE CONTROL AFTER PURCHASE)	39	36
PRACTICE, SUPPRESSION: (SCOUTING DATA COMPARED TO PUBLISHED INFORMATION TO ASSIST DECISIONS)	43	35
PRACTICE, SUPPRESSION: (GROUND COVERS, MULCHES, OR OTHER PHYSICAL BARRIERS MAINTAINED)	41	39

The complete report can be found under **Publications** on the USDA NASS website at www.nass.usda.gov.