



## ANNUAL CROP PRODUCTION REPORT

**Corn for grain production** in Iowa during 2012 is estimated at 1.88 billion bushels, according to the USDA National Agricultural Statistics Service annual *Crop Production 2012 Summary* report released today. This estimate is down more than 1 percent from the November 1 forecast and 20 percent below 2011. This is the lowest production since 2003. Iowa's corn for grain yield is estimated at 137 bushels per acre, 2 bushels less than the November 1 forecast and 35 bushels below 2011. Area harvested for grain is estimated at 13.7 million acres, unchanged from the November 1 forecast and equal to 2011. Corn planted for all purposes in 2012 is estimated at 14.2 million acres, up less than 1 percent from 2011.

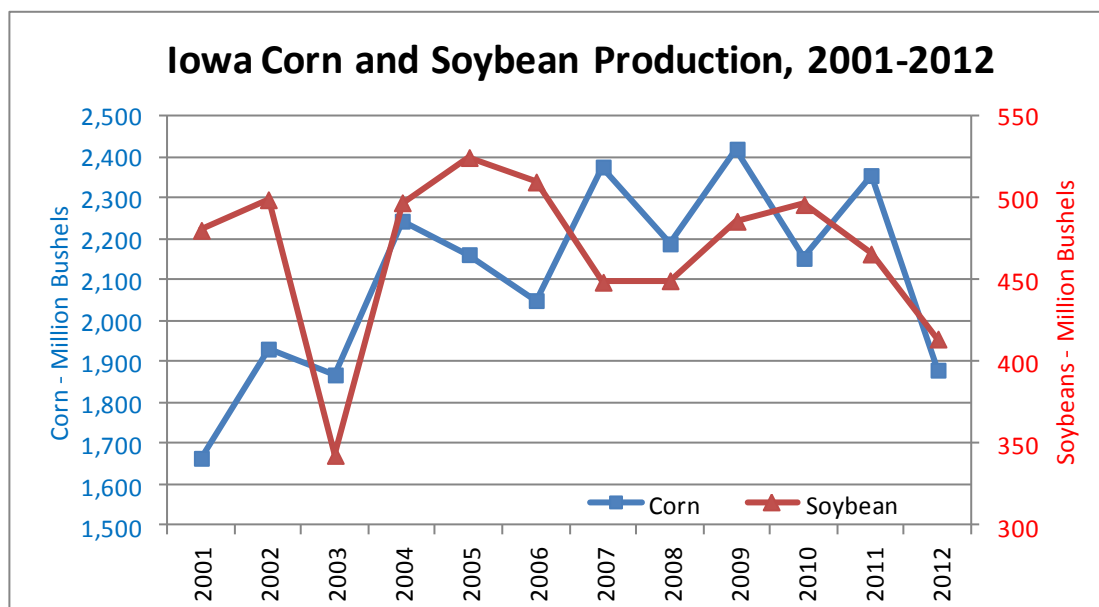
**Corn for silage** production is estimated at 4.88 million tons, up 19 percent from 2011. The silage yield estimate of 15.0 tons per acre is 5.5 tons per acre lower than 2011. Producers harvested 325,000 acres of corn for silage, 125,000 more acres harvested than in 2011.

**Soybean production** is estimated at 414 million bushels in 2012, up 1 percent from the November 1 forecast, but down 13 percent from 2011. This is the lowest production since 2003. Iowa soybean growers averaged 44.5 bushels per acre in 2012. This is 0.5 bushel above the November 1 forecast, but down 7.0 bushels from the 2011 yield. The harvested acreage of 9.30 million acres is 1 percent above the 2011 estimate. Soybean planted acreage, at 9.35 million acres, equals the 2011 planted acreage.

**All hay production** for the state is estimated at 2.81 million tons, down 19 percent from the 3.46 million tons produced in 2011. Producers averaged 2.47 tons per acre, down from 3.04 in 2011. All hay harvested acres is estimated at 1.14 million acres, unchanged from the previous year.

**Alfalfa and alfalfa mixtures** production is estimated at 2.12 million tons, down 24 percent from 2011. Producers averaged 2.9 tons per acre. Harvested acres decreased by 11 percent from last year, to 730,000 acres. Iowa producers seeded 115,000 acres of alfalfa in 2012, up 35 percent from the previous year.

**Other hay** production is estimated at 697,000 tons, 4 percent above the previous year's production. Producers averaged 1.7 tons per acre, down from 2.1 tons per acre in 2011. Harvested acres of other hay, at 410,000, is up 28 percent from the previous year.



## 2012 Crop Production Summary - Iowa and United States

Crop	For Harvest		Yield per acre		Production	
	2011	2012	2011	2012	2011	2012
	(Thousand Acres)	(Thousand Acres)	(Bushels)	(Bushels)	(Thousand Bushels)	(Thousand Bushels)
<b>IOWA</b>						
Oats for Grain .....	50	58	65.0	65.0	3,250	3,770
Wheat, Winter.....	16	13	45.0	53.0	720	689
Corn for Grain .....	13,700	13,700	172.0	137.0	2,356,400	1,876,900
Corn for Silage <sup>1</sup> .....	200	325	20.5	15.0	4,100	4,875
Soybeans .....	9,230	9,300	51.5	44.5	475,345	413,850
Hay, all <sup>2</sup> .....	1,140	1,140	3.04	2.47	3,460	2,814
Alfalfa Hay <sup>2</sup> .....	820	730	3.40	2.90	2,788	2,117
All Other Hay <sup>2</sup> .....	320	410	2.10	1.70	672	697
<b>UNITED STATES</b>						
Oats for Grain .....	939	1,045	57.1	61.3	53,649	64,024
Wheat, Winter.....	32,314	34,834	46.2	47.2	1,493,677	1,645,202
Corn for Grain .....	83,989	87,375	147.2	123.4	12,359,612	10,780,296
Corn for Silage <sup>1</sup> .....	5,935	7,379	18.4	15.4	109,094	113,450
Soybeans .....	73,776	76,104	41.9	39.6	3,093,524	3,014,998
Hay, all <sup>2</sup> .....	55,653	56,260	2.36	2.13	131,216	119,878
Alfalfa Hay <sup>2</sup> .....	19,213	17,292	3.40	3.01	65,332	52,049
All Other Hay <sup>2</sup> .....	36,440	38,968	1.81	1.74	65,884	67,829

<sup>1</sup> Corn for Silage yield is reported in tons per acre and hay production in thousand tons. <sup>2</sup> Hay yield is reported in tons per acre and hay production in thousand tons.

### U.S. Corn Supply and Demand

CORN	2010-2011	2011-2012 (Est.)	2012-2013 <sup>1</sup> Projections January
	(Million Bushels)	(Million Bushels)	(Million Bushels)
Beginning Stocks .....	1,708	1,128	989
Production .....	12,447	12,360	10,780
Imports .....	28	29	100
<b>Supply, total</b> .....	<b>14,182</b>	<b>13,516</b>	<b>11,869</b>
Feed & Residual .....	4,795	4,548	4,450
Food, Seed & Industrial .....	6,426	6,437	5,867
<b>Domestic, total</b> .....	<b>11,221</b>	<b>10,985</b>	<b>10,317</b>
Exports .....	1,834	1,543	950
<b>Use, total</b> .....	<b>13,055</b>	<b>12,527</b>	<b>11,267</b>
<b>Ending Stocks, total</b> ...	<b>1,128</b>	<b>989</b>	<b>602</b>
Avg. farm price (\$/bu) ...	5.18	6.22	6.80-8.00

<sup>1</sup> Preliminary

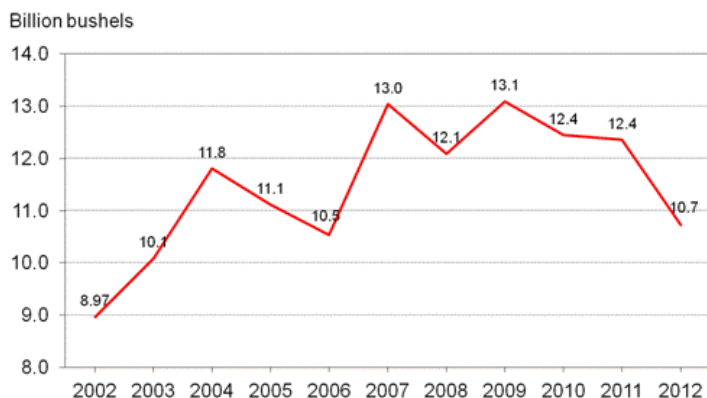
### U.S. Soybean Supply and Demand

SOYBEANS	2010-2011	2011-2012 (Est.)	2012-2013 <sup>1</sup> Projections January
	(Million Bushels)	(Million Bushels)	(Million Bushels)
Beginning Stocks .....	151	215	169
Production .....	3,329	3,094	3,015
Imports .....	14	16	20
<b>Supply, total</b> .....	<b>3,495</b>	<b>3,325</b>	<b>3,204</b>
Crushings .....	1,648	1,703	1,605
Exports .....	1,501	1,362	1,345
Seed .....	87	90	89
Residual .....	43	1	30
<b>Use, total</b> .....	<b>3,280</b>	<b>3,155</b>	<b>3,070</b>
<b>Ending stocks</b> .....	<b>215</b>	<b>169</b>	<b>135</b>
Avg. farm price (\$/bu) ....	11.30	12.50	13.5-15.00

<sup>1</sup> Preliminary



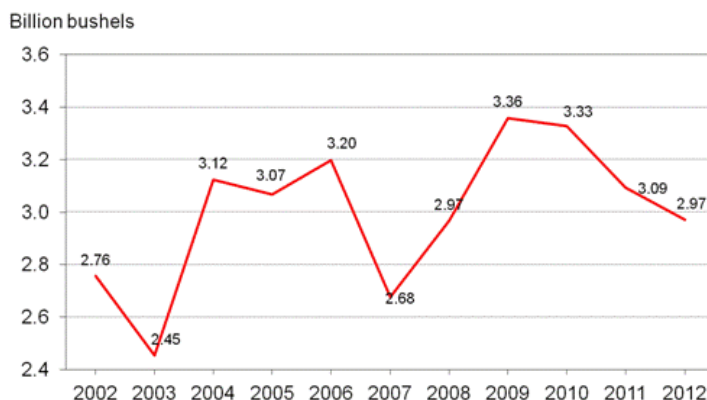
### U.S. Corn Production



USDA-NASS  
11-9-12



### U.S. Soybean Production



USDA-NASS  
11-9-12

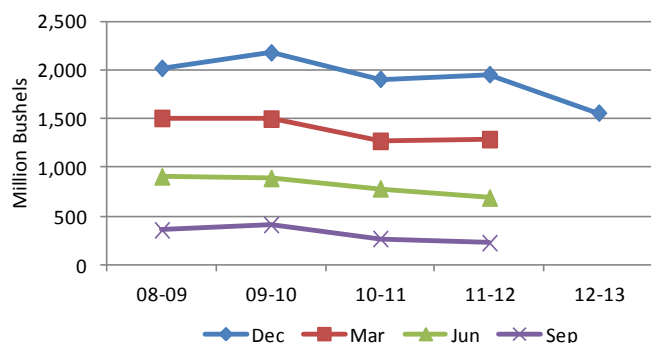
## GRAIN STOCKS

Iowa **corn** stored in all positions on December 1, 2012 totaled 1.56 billion bushels, down 20 percent from December 1, 2011, according to the USDA National Agricultural Statistics Service *Grain Stocks* report released today. Fifty-eight percent of the total stocks were stored on-farm. The September - November 2012 indicated disappearance totaled 543 million bushels, 19 percent less than the 670 million bushels used during the same quarter last year.

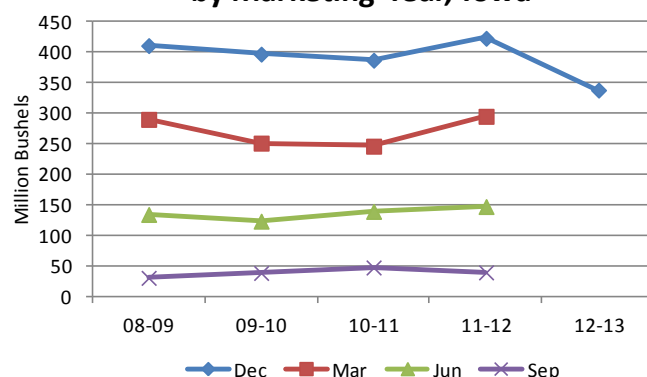
**Soybeans** stored in all positions on December 1, 2012 totaled 338 million bushels, down 20 percent from the 423 million bushels on hand December 1, 2011. Forty-three percent of the total stocks were stored on-farm. Indicated disappearance for September - November 2012 totaled 115 million bushels, 15 percent more than the 100 million bushels used during the same quarter last year.

**Oats** stored in all positions on December 1, 2012 totaled 5.62 million bushels, 6 percent below the stocks on December 1, 2011. Of the total stocks on hand, 1.1 million bushels are stored on farms, down 8 percent from a year ago. Off-farm stocks totaled 4.52 million bushels, down 5 percent from the previous year.

**Corn Stocks  
by Marketing Year, Iowa**



**Soybean Stocks  
by Marketing Year, Iowa**



### Stocks of Grain, December 1, Iowa and United States

Position and Grain	Iowa			United States		
	December 1 2011	December 1 2012	'12 as % of '11	December 1 2011	December 1 2012	'12 as % of '11
	(1,000 Bushels)	(1,000 Bushels)	(Percent)	(1,000 Bushels)	(1,000 Bushels)	(Percent)
<b>On-Farm Stocks</b>						
Corn .....	1,250,000	910,000	73	6,175,000	4,586,000	74
Soybeans .....	185,000	145,000	78	1,139,000	910,000	80
Oats .....	1,300	1,100	85	24,900	26,000	104
Wheat .....	(D)	(D)	(X)	405,200	399,500	99
<b>Off-Farm Stocks <sup>1</sup></b>						
Corn .....	704,253	650,221	92	3,471,823	3,444,474	99
Soybeans .....	237,825	193,067	81	1,230,885	1,055,613	86
Oats .....	4,764	4,515	95	54,235	47,053	87
Wheat .....	1,984	2,421	122	1,257,318	1,260,355	100
<b>Total Stocks</b>						
Corn .....	1,954,253	1,560,221	80	9,646,823	8,030,474	83
Soybeans .....	422,825	338,067	80	2,369,885	1,965,613	83
Oats .....	6,064	5,615	93	79,135	73,053	92
Wheat .....	(D)	(D)	(X)	1,662,518	1,659,855	100

(D) Withheld to avoid disclosing data for individual operations. (X) Not Applicable.

<sup>1</sup>Includes stocks at mills, elevators, warehouses, terminals, and processors.



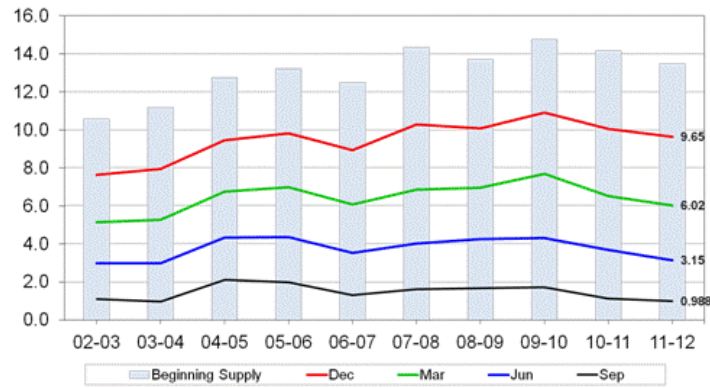
## U.S. Corn Stocks



## U.S. Soybean Stocks

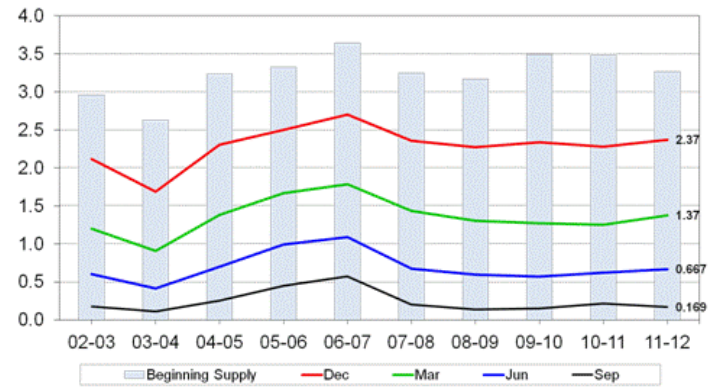


Billion bushels



USDA-NASS  
09-28-12

Billion bushels



USDA-NASS  
09-28-12

# Fill out your Agriculture Census.

Visit [www.agcensus.usda.gov](http://www.agcensus.usda.gov)



United States Department of Agriculture  
National Agricultural Statistics Service

2012 CENSUS OF AGRICULTURE  
YOUR VOICE. YOUR FUTURE. YOUR RESPONSIBILITY.

PRESTRT STD  
POSTAGE & FEES PAID  
USDA  
PERMIT NO. G-38

IOWA AGRINEWS IS PUBLISHED BY USDA NATIONAL AGRICULTURAL  
STATISTICS SERVICE, IOWA FIELD OFFICE, 210 WALNUT ST. RM 833,  
DES MOINES IA 50309. POSTMASTER, SEND ADDRESS CHANGES TO IA  
CROPS & WEATHER, C/O SD AGRICULTURAL STATISTICS, PO BOX  
5068, SIOUX FALLS SD 57117.